

District I  
1625 N. French Dr., Hobbs, NM 88240  
Phone: (575) 393-6161 Fax: (575) 393-0720

District II  
811 S. First St., Artesia, NM 88210  
Phone: (575) 748-1283 Fax: (575) 748-9720

District III  
1000 Rio Brazos Road, Aztec, NM 87410  
Phone: (505) 334-6178 Fax: (505) 334-6170

District IV  
1220 S. St. Francis Dr., Santa Fe, NM 87505  
Phone: (505) 476-3460 Fax: (505) 476-3462

# State of New Mexico

Form C-101  
Revised November 14, 2012

## Energy Minerals and Natural Resources

**HOBBS OCD**

**Oil Conservation Division**

☐ AMENDED REPORT

**JAN 24 2013**

**1220 South St. Francis Dr.**

**Santa Fe, NM 87505**

**RECEIVED**

### APPLICATION FOR PERMIT TO DRILL, RE-ENTER, DEEPEN, PLUGBACK, OR ADD A ZONE

<sup>1</sup> Operator Name and Address COG Operating LLC 2208 West Main Street Artesia, NM 88210		<sup>2</sup> OGRID Number 229137
<sup>3</sup> Property Code 3868		<sup>4</sup> APL Number 301025-4095.2
<sup>5</sup> Property Name Corazon State Unit		<sup>6</sup> Well No 10H

#### 7. Surface Location

UL - Lot	Section	Township	Range	Lot Idn	Feet from	N/S Line	Feet From	E/W Line	County
5	4	21S	33E		1980	North	50	West	Lea

#### 8. Proposed Bottom Hole Location

UL - Lot	Section	Township	Range	Lot Idn	Feet from	N/S Line	Feet From	E/W Line	County
8	4	21S	33E		1980	North	330	East	Lea

#### 9. Pool Information

Pool Name	Pool Code
Wildcat, Bone Spring	97895

#### Additional Well Information

<sup>11</sup> Work Type New Well	<sup>12</sup> Well Type Oil	<sup>13</sup> Cable/Rotary	<sup>14</sup> Lease Type State	<sup>15</sup> Ground Level Elevation 3747.5'
<sup>16</sup> Multiple N	<sup>17</sup> Proposed Depth 18780	<sup>18</sup> Formation Bone Spring	<sup>19</sup> Contractor	<sup>20</sup> Spud Date 1/29/2013
Depth to Ground water		Distance from nearest fresh water well		Distance to nearest surface water

#### 21. Proposed Casing and Cement Program

Type	Hole Size	Casing Size	Casing Weight/ft	Setting Depth	Sacks of Cement	Estimated TOC
Surface	17.5	13.375	54.5	1825	1100	
Intrmd	12.25	9.625	36	5500	1400	
Open Hole	7.875	5.5	17	18780	1600	5300

#### Casing/Cement Program: Additional Comments

Plan to drill a 17-1/2" hole to 1825' with Fresh Water. Run 13-3/8", 54.5#, J-55 csg and cmt to surface. Drill 12-1/4" hole to 5500' with Brine, and run 9-5/8", 36# J55(40# f/3500 - 5500') and cement to surface. Drill 7-7/8" hole with cut brine to 10,800'. Kick off and drill curve then drill 7-7/8" lateral to approx. 18,780' MD (11,325' TVD). Run 5-1/2", 17#, P-110 csg and cement to 5300'.

**Permit Expires 2 Years From Approval Date Unless Drilling Underway**

#### 22. Proposed Blowout Prevention Program

Type	Working Pressure	Test Pressure	Manufacturer
Double Ram	3000	3000	Cameron

<sup>23</sup> I hereby certify that the information given above is true and complete to the best of my knowledge and belief.

I further certify that I have complied with 19.15.14.9 (A) NMAC ☒ and/or 19.15.14.9 (B) NMAC ☒, if applicable.

Signature: *Mayte Reyes*

Printed name: Mayte Reyes

Title: Regulatory Analyst

E-mail Address: mreyes1@concho.com

Date: 1/23/2013

Phone: 575-748-6945

#### OIL CONSERVATION DIVISION

Approved By:

Title: *PETROLEUM ENGINEER*

Approved Date: **JAN 31 2013**

Expiration Date:

Conditions of Approval Attached

**FEB 04 2013**

DISTRICT I  
1625 N. FRENCH DR., HOBBS, NM 88240

State of New Mexico  
Energy, Minerals and Natural Resources Department

HOBBS OCD

Form C-102

DISTRICT II  
1301 W. GRAND AVENUE, ARTESIA, NM 88210

OIL CONSERVATION DIVISION  
11885 SOUTH ST. FRANCIS DR.  
Santa Fe, New Mexico 87505

Submittal to Appropriate District Office  
JAN 24 2013

Revised October 12, 2010  
State Lease - 4 Copies  
Fee Lease - 3 Copies

DISTRICT III  
1000 RIO BRAZOS RD., AZTEC, NM 87410

RECEIVED

DISTRICT IV  
11885 S. ST. FRANCIS DR., SANTA FE, NM 87505

WELL LOCATION AND ACREAGE DEDICATION PLAT

☐ AMENDED REPORT

API Number 30-025-40952	Pool Code 97895	Pool Name Wildcat G-08 S213304D; Bone Spring
Property Code	Property Name CORAZON STATE UNIT	Well Number 10H
OGRID No.	Operator Name COG OPERATING, LLC	Elevation 3747.5'

Surface Location

UL or lot No.	Section	Township	Range	Lot Idn	Feet from the	North/South line	Feet from the	East/West line	County
5	4	21-S	33-E		1980	NORTH	50	WEST	LEA

Bottom Hole Location If Different From Surface

UL or lot No.	Section	Township	Range	Lot Idn	Feet from the	North/South line	Feet from the	East/West line	County
8	4	21-S	33-E		1980	NORTH	330	EAST	LEA

Dedicated Acres	Joint or Infill	Consolidation Code	Order No.
160			

NO ALLOWABLE WILL BE ASSIGNED TO THIS COMPLETION UNTIL ALL INTERESTS HAVE BEEN CONSOLIDATED  
OR A NON-STANDARD UNIT HAS BEEN APPROVED BY THE DIVISION

NW CORNER  
Y=554498.8 N  
X=730460.3 E

NE CORNER  
Y=554534.5 N  
X=735737.7 E

1/16 CORNER  
Y=551874.8 N  
X=730481.9 E

1/16 CORNER  
Y=551908.2 N  
X=735757.6 E

SURFACE LOCATION  
Y=552520.0 N  
X=730526.7 E  
LAT.=32.516764° N  
LONG.=103.585470° W

PROPOSED BOTTOM HOLE LOCATION  
Y=552552.4 N  
X=735422.9 E  
LAT.=32.516758° N  
LONG.=103.569587° W

GRID AZ. = 89°37'13"  
HORZ. DIST. = 4896.31'

1980' 1980' 330' 50'

S.L. B.H.

**OPERATOR CERTIFICATION**

I hereby certify that the information herein is true and complete to the best of my knowledge and belief, and that this organization either owns a working interest or unleased mineral interest in the land including the proposed bottom hole location or has a right to drill this well at this location pursuant to a contract with an owner of such mineral or working interest, or to a voluntary pooling agreement or a compulsory pooling order heretofore entered by the division.

*Melanie J. Parker* 11/23/13  
Signature Date  
*Melanie J. Parker*  
Printed Name

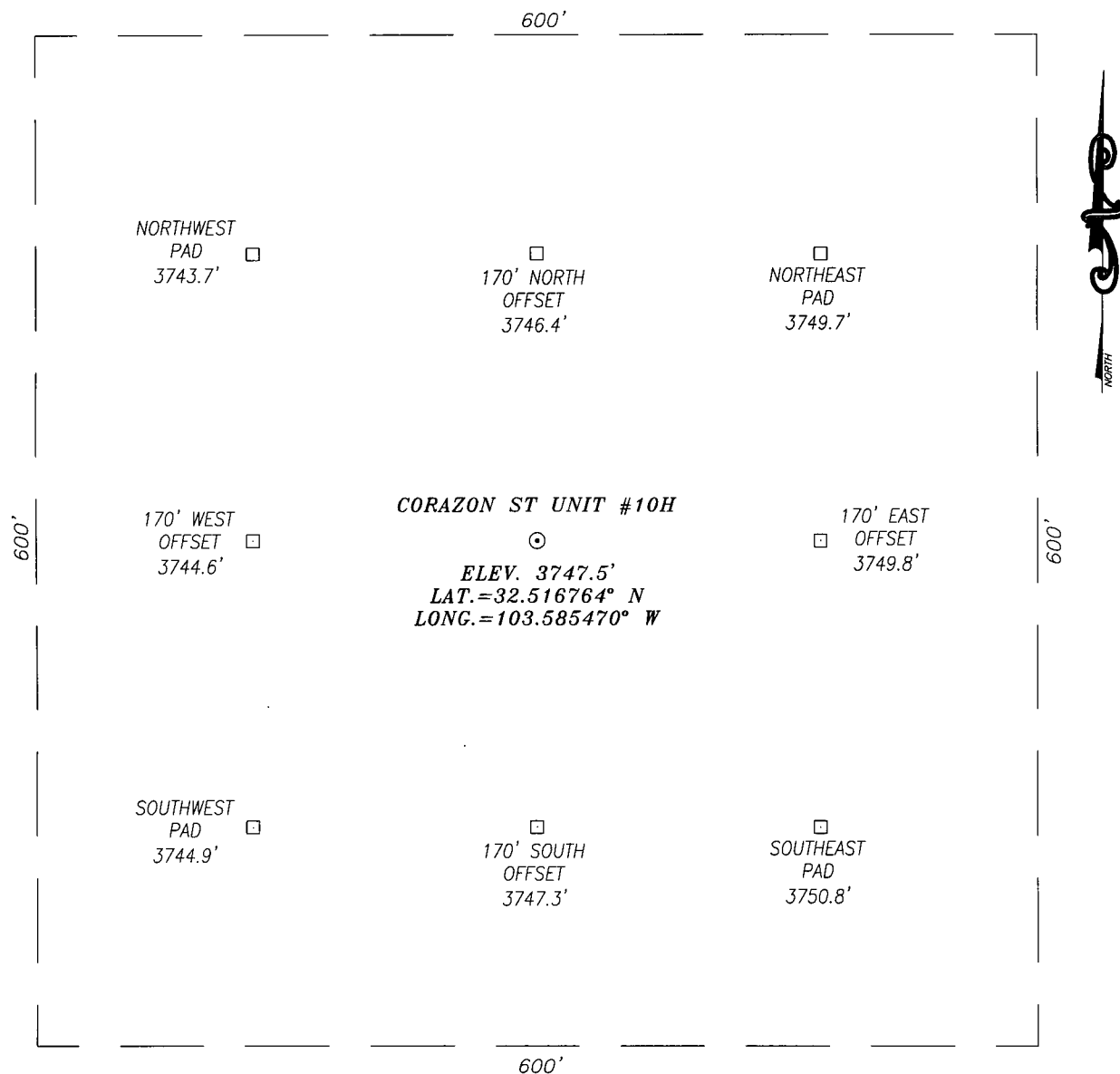
**SURVEYOR CERTIFICATION**

I hereby certify that the well location shown on this plat was plotted from field notes of actual surveys made by me or under my supervision, and that the same is true and correct to the best of my belief.

AUGUST 10, 2012

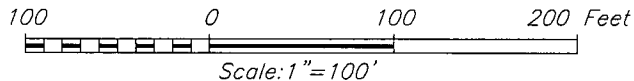
Date Surveyed  
Signature *CHAD L. HARCROW*  
Professional Surveyor  
*Chad Harcrow* 8/27/12  
12-078  
Certificate CHAD HARCROW 17777  
2012-037

SECTION 4, TOWNSHIP 21 SOUTH, RANGE 33 EAST, N.M.P.M.,  
LEA COUNTY NEW MEXICO



DIRECTIONS TO LOCATION:

HEADING EAST ON HWY. 176 APPROXIMATELY 0.1 MILES PAST MILE MARKER 9, TURN RIGHT ONTO CALICHE LEASE ROAD. ON LEASE ROAD HEAD WEST FOR APPROXIMATELY 0.3 MILES TO EXISTING PAD. MAKE WAY TO SOUTHWEST PAD CORNER AND WELL IS 0.3 MILES SOUTH.



HARCROW SURVEYING

1107 WATSON, ARTESIA N.M. 88210  
PH: (575) 513-2570  
FAX: (575) 746-2808  
EST. 2007



**COG OPERATING, LLC**

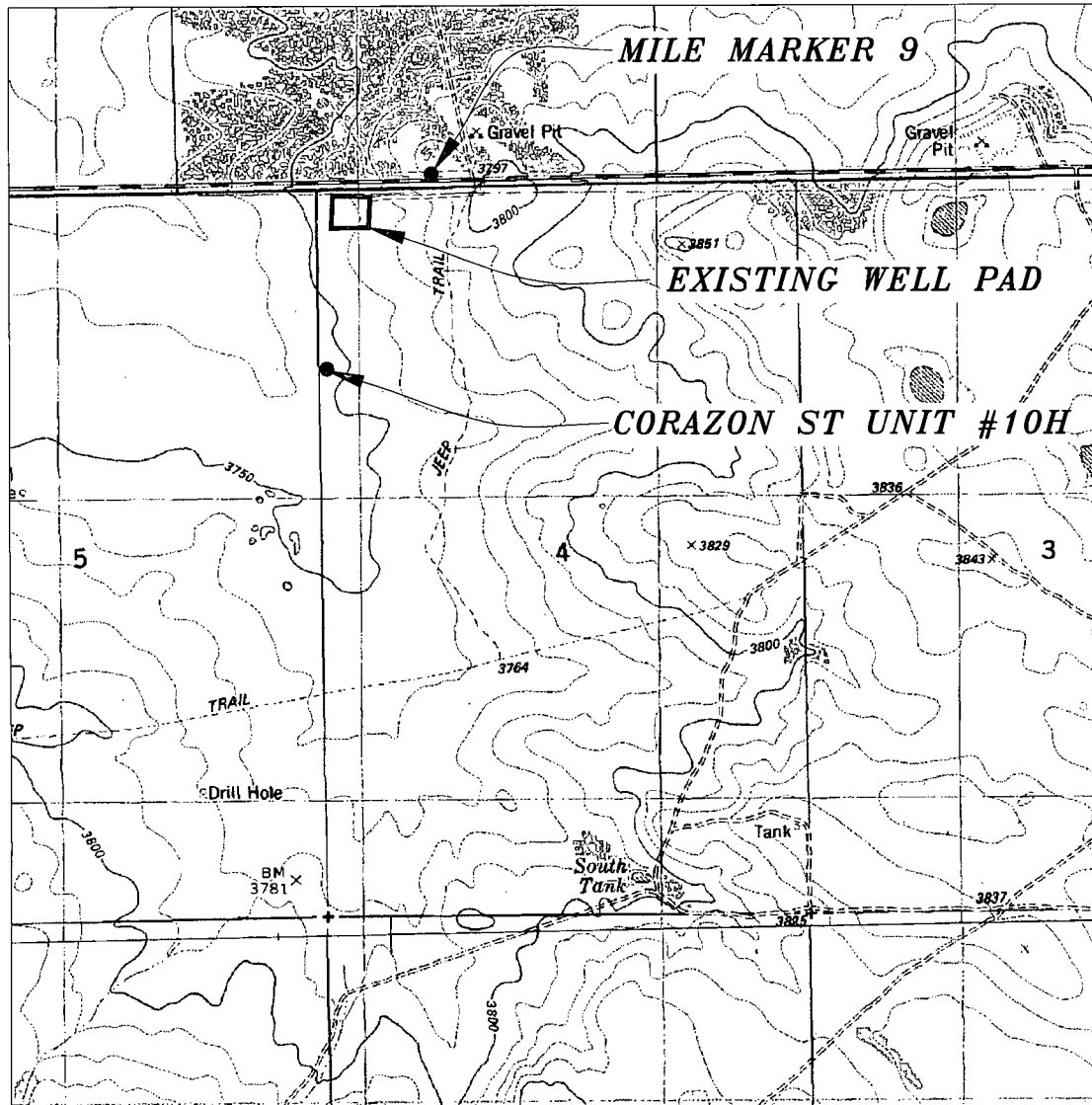
CORAZON ST UNIT #10H WELL  
LOCATED 50 FEET FROM THE WEST LINE  
AND 1980 FEET FROM THE NORTH LINE OF SECTION 4,  
TOWNSHIP 21 SOUTH, RANGE 33 EAST, N.M.P.M.,  
LEA COUNTY, NEW MEXICO

SURVEY DATE: AUGUST 07, 2012 PAGE: 1 OF 1

DRAFTING DATE: AUGUST 13, 2012

APPROVED BY: CH DRAWN BY: DDSI FILE: 12-076

# LOCATION VERIFICATION MAP



SCALE: 1" = 2000'

CONTOUR INTERVAL: 10'

SEC. 4 TWP. 21-S RGE. 33-E  
 SURVEY N.M.P.M.  
 COUNTY LEA STATE NEW MEXICO  
 DESCRIPTION 1980' FNL & 50' FWL  
 ELEVATION 3748'  
 OPERATOR COG OPERATING, LLC  
 LEASE CORAZON ST UNIT  
 U.S.G.S. TOPOGRAPHIC MAP  
LEA, N.M.

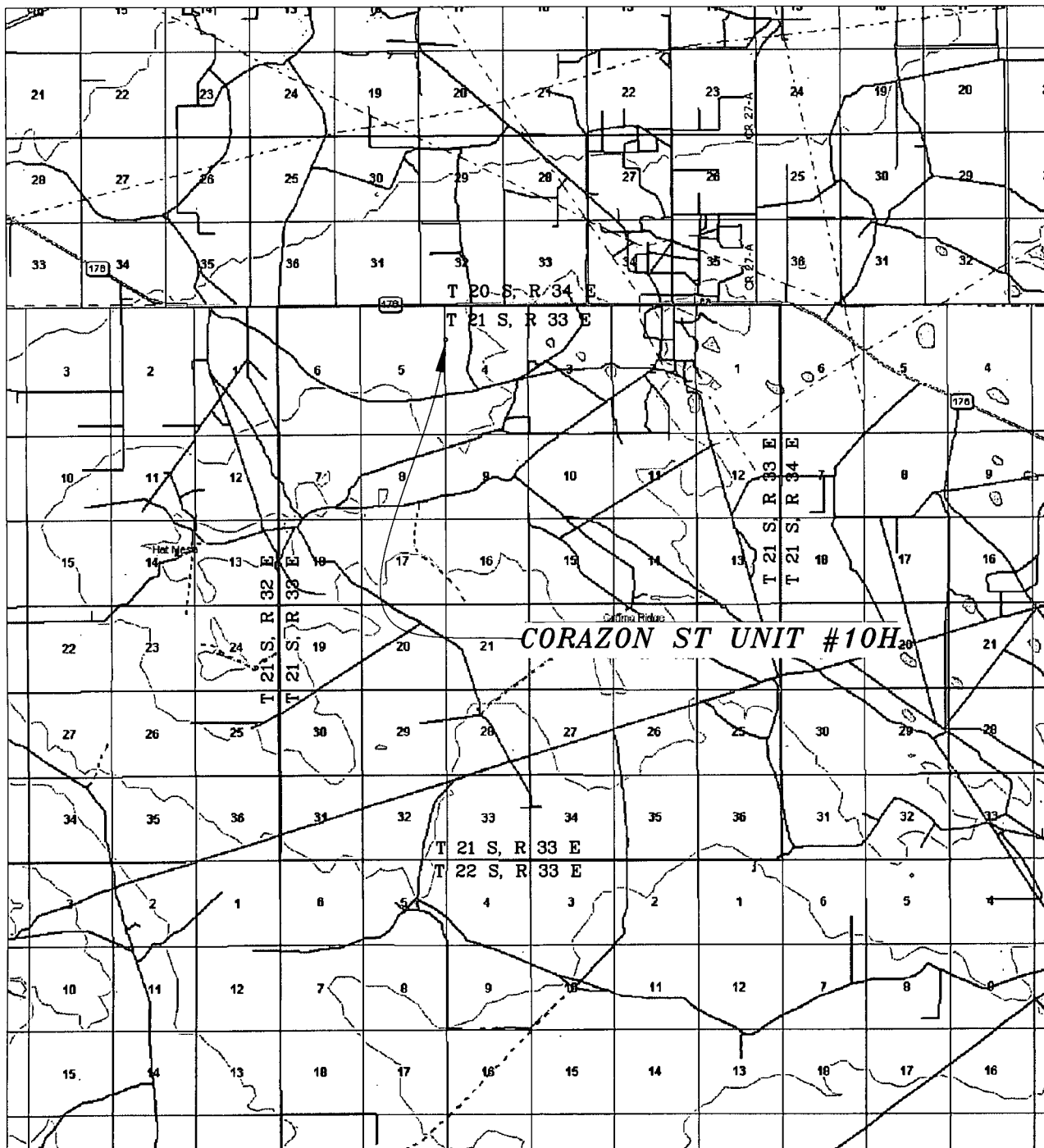
**HARCROW SURVEYING**  
 1107 WATSON, ARTESIA N.M. 88210  
 PH: (575) 513-2570  
 FAX: (575) 746-2808  
 EST. 2007



**COG OPERATING, LLC**

SURVEY DATE: AUGUST 07, 2012	PAGE: 1 OF 1
DRAFTING DATE: AUGUST 16, 2012	
APPROVED BY: CH	DRAWN BY: DDSI FILE: 12-076

# VICINITY MAP



SEC. 4 TWP. 21-S RGE. 33-E  
 SURVEY N.M.P.M.  
 COUNTY LEA STATE NEW MEXICO  
 DESCRIPTION 1980' FNL & 50' FWL  
 ELEVATION 3748'  
 OPERATOR COG OPERATING, LLC  
 LEASE CORAZON ST UNIT

SCALE: 1" = 2 MILES

HARCROW SURVEYING  
 1107 WATSON, ARTESIA N.M. 88210  
 PH: (575) 513-2570  
 FAX: (575) 746-2808  
 EST. 2007



## COG OPERATING, LLC

SURVEY DATE: AUGUST 07, 2012	PAGE: 1 OF 1
DRAFTING DATE: AUGUST 16, 2012	
APPROVED BY: CH	DRAWN BY: DDSI FILE: 12-076