

District I
1625 N. French Dr., Hobbs, NM 88240
Phone: (575) 393-6161 Fax: (575) 393-0720

District II
811 S. First St., Artesia, NM 88210
Phone: (575) 748-1283 Fax: (575) 748-9720

District III
1000 Rio Brazos Road, Aztec, NM 87410
Phone: (505) 334-6178 Fax: (505) 334-6170

District IV
1220 S. St. Francis Dr., Santa Fe, NM 87505
Phone: (505) 476-3460 Fax: (505) 476-3462

State of New Mexico

Form C-101
Revised November 14, 2012

Energy Minerals and Natural Resources

HOBBS OCD Oil Conservation Division

☐ AMENDED REPORT

JAN 24 2013 1220 South St. Francis Dr.
Santa Fe, NM 87505

RECEIVED

APPLICATION FOR PERMIT TO DRILL, RE-ENTER, DEEPEN, PLUGBACK, OR ADD A ZONE

1. Operator Name and Address COG Operating LLC 2208 West Main Street Artesia, NM 88210		2. OGRID Number 229137	
3. Property Code 3860		4. API Number 301025-40953	
5. Property Name Corazon State Unit		6. Well No 11H	

7. Surface Location

UL - Lot	Section	Township	Range	Lot Idn	Feet from	N/S Line	Feet From	E/W Line	County
12	4	21S	33E		3300	North	50	West	Lea

8. Proposed Bottom Hole Location

UL - Lot	Section	Township	Range	Lot Idn	Feet from	N/S Line	Feet From	E/W Line	County
9	4	21S	33E		3300	North	330	East	Lea

9. Pool Information

Pool Name	Pool Code
Wildcat; Bone Spring	97895

Additional Well Information

11. Work Type New Well	12. Well Type Oil	13. Cable/Rotary	14. Lease Type State	15. Ground Level Elevation 3747.3'
16. Multiple N	17. Proposed Depth 18780	18. Formation Bone Spring	19. Contractor	20. Spud Date 1/29/2013
Depth to Ground water		Distance from nearest fresh water well		Distance to nearest surface water

21. Proposed Casing and Cement Program

Type	Hole Size	Casing Size	Casing Weight/ft	Setting Depth	Sacks of Cement	Estimated TOC
Surface	17.5	13.375	54.5	1825	1100	
Intrmd	12.25	9.625	36	5500	1400	
Open Hole	7.875	5.5	17	18780	1600	5300

Casing/Cement Program: Additional Comments

Plan to drill a 17-1/2" hole to 1825' with Fresh Water. Run 13-3/8", 54.5#, J-55 csg and cmt to surface. Drill 12-1/4" hole to 5500' with Brine, and run 9-5/8", 36# J55(40# f/3500 - 5500') and cement to surface. Drill 7-7/8" hole with cut brine to 10,800'. Kick off and drill curve then drill 7-7/8" lateral to approx. 18,780' MD (11,325' TVD). Run 5-1/2", 17#, P-110 csg and cement to 5300'.

22. Proposed Blowout Prevention Program

Permit Expires 2 Years From Approval
Date Unless Drilling Underway

Type	Working Pressure	Test Pressure	Manufacturer
Double Ram	3000	3000	Cameron

23. I hereby certify that the information given above is true and complete to the best of my knowledge and belief.

I further certify that I have complied with 19.15.14.9 (A) NMAC ☒ and/or 19.15.14.9 (B) NMAC ☒, if applicable.

Signature: *Mayte Reyes*

Printed name: Mayte Reyes

Title: Regulatory Analyst

E-mail Address: mreyes1@concho.com

Date: 1/23/2013

Phone: 575-748-6945

OIL CONSERVATION DIVISION

Approved By:

Title:

PETROLEUM ENGINEER

Approved Date: JAN 31 2013

Expiration Date:

Conditions of Approval Attached

FEB 04 2013

HOBBS OCD

DISTRICT I
1625 N. FRENCH DR., HOBBS, NM 88240

JAN 24 2013

State of New Mexico
Energy, Minerals and Natural Resources Department

Form C-102

DISTRICT II
1301 W. GRAND AVENUE, ARTESIA, NM 88210

RECEIVED

CONSERVATION DIVISION

Revised October 12, 2010
Submit to Appropriate District Office
State Lease - 4 Copies
Fee Lease - 3 Copies

DISTRICT III
1000 RIO BRAZOS RD., AZTEC, NM 87410

11885 SOUTH ST. FRANCIS DR.
Santa Fe, New Mexico 87505

DISTRICT IV
11885 S. ST. FRANCIS DR., SANTA FE, NM 87505

WELL LOCATION AND ACREAGE DEDICATION PLAT

☐ AMENDED REPORT

API Number 30-025- 40953	Pool Code 97895	Pool Name Wildcat G-08 S213304D; Bone Spring
Property Code 38601	Property Name CORAZON STATE UNIT	Well Number 11H
OGRID No. 229137	Operator Name COG OPERATING, LLC	Elevation 3747.3'

Surface Location

UL or lot No.	Section	Township	Range	Lot Idn	Feet from the	North/South line	Feet from the	East/West line	County
12	4	21-S	33-E		3300	NORTH	50	WEST	LEA

Bottom Hole Location If Different From Surface

UL or lot No.	Section	Township	Range	Lot Idn	Feet from the	North/South line	Feet from the	East/West line	County
9	4	21-S	33-E		3300	NORTH	330	EAST	LEA

Dedicated Acres	Joint or Infill	Consolidation Code	Order No.
160.0			

NO ALLOWABLE WILL BE ASSIGNED TO THIS COMPLETION UNTIL ALL INTERESTS HAVE BEEN CONSOLIDATED
OR A NON-STANDARD UNIT HAS BEEN APPROVED BY THE DIVISION

SURFACE LOCATION
Y=551200.3 N
X=730537.6 E
LAT.=32.513136° N
LONG.=103.585465° W

PROPOSED BOTTOM HOLE LOCATION
Y=551232.9 N
X=735432.9 E
LAT.=32.513131° N
LONG.=103.569585° W

1/16 CORNER
Y=551874.8° N
X=730481.9° E

1/16 CORNER
Y=551908.2° N
X=735757.6° E

W 1/4 CORNER
Y=549250.5° N
X=730503.6° E

E 1/4 CORNER
Y=549281.8° N
X=735777.6° E

GRID AZ. = 89°37'05"
HORZ. DIST. = 4895.41'

50' S.L. 330' B.H.

OPERATOR CERTIFICATION

I hereby certify that the information herein is true and complete to the best of my knowledge and belief, and that this organization either owns a working interest or unleased mineral interest in the land including the proposed bottom hole location or has a right to drill this well at this location pursuant to a contract with an owner of such mineral or working interest, or to a voluntary pooling agreement or a compulsory pooling order heretofore entered by the division.

Melanie J. Parker
Signature Date 1/23/13

Melanie J. Parker
Printed Name

SURVEYOR CERTIFICATION

I hereby certify that the well location shown on this plat was plotted from field notes of actual surveys made by me or under my supervision, and that the same is true and correct to the best of my belief.

AUGUST 16, 2012

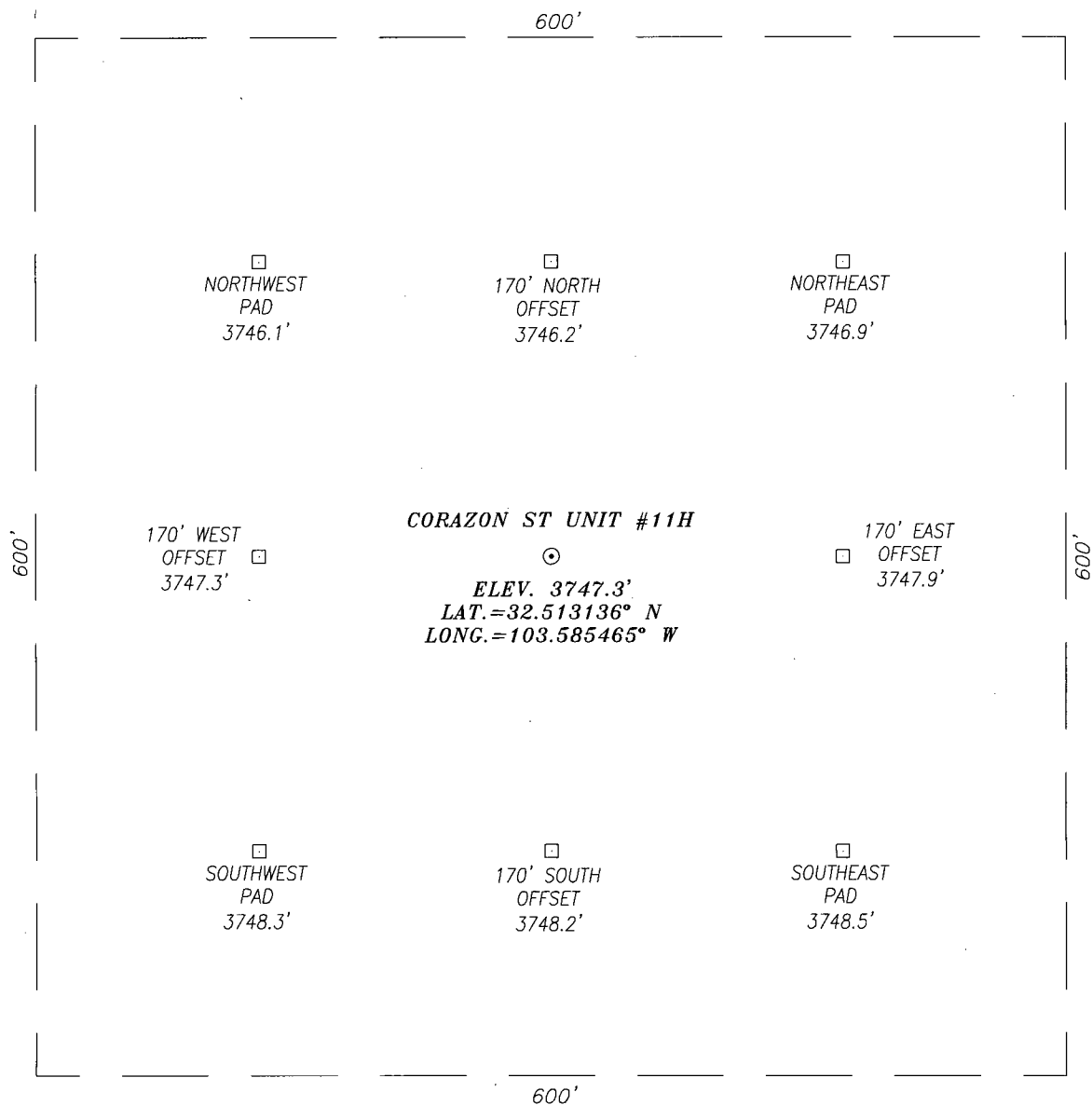
Date Surveyed
Signature & Seal
Professional Surveyor

Chad L. Hargrow
17777
8/23/12

Certificate No. 17777

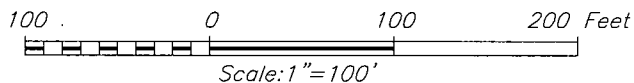
2012-037

SECTION 4, TOWNSHIP 21 SOUTH, RANGE 33 EAST, N.M.P.M.,
LEA COUNTY NEW MEXICO



DIRECTIONS TO LOCATION

HEADING EAST ON HWY. 176 APPROXIMATELY 0.1 MILES PAST MILE MARKER
9 TURN RIGHT ONTO CALICHE LEASE ROAD. ON LEASE ROAD HEAD WEST
FOR APPROXIMATELY 0.3 MILES TO EXISTING PAD. MAKE WAY TO
SOUTHWEST PAD CORNER AND WELL IS 0.5 MILES SOUTH.



HARCROW SURVEYING
1107 WATSON, ARTESIA N.M. 88210
PH: (575) 513-2570
FAX: (575) 746-2808
EST. 2007

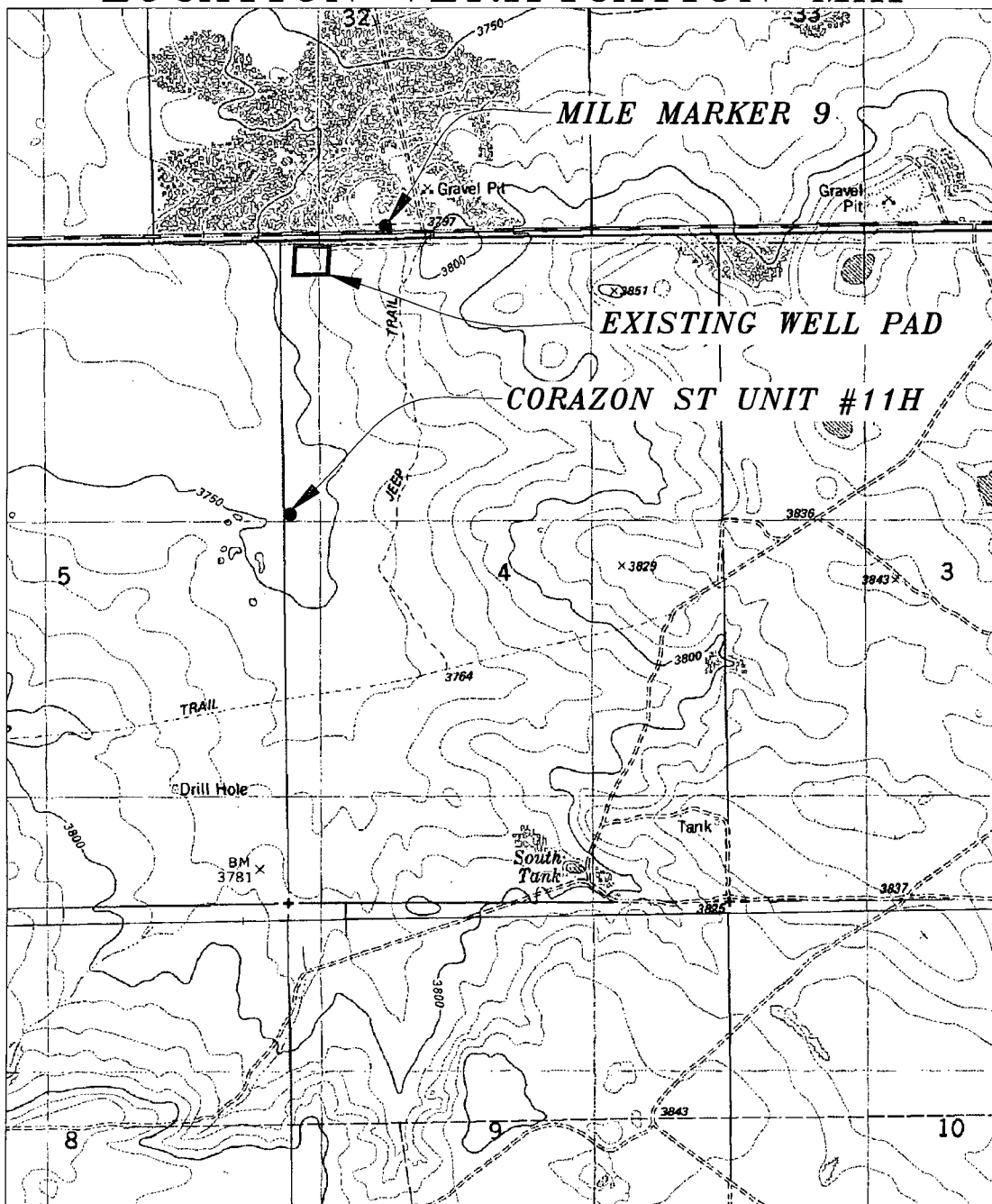


COG OPERATING, LLC

CORAZON ST UNIT #11H WELL
LOCATED 3300 FEET FROM THE NORTH LINE
AND 50 FEET FROM THE WEST LINE OF SECTION 4,
TOWNSHIP 21 SOUTH, RANGE 33 EAST, N.M.P.M.,
LEA COUNTY, NEW MEXICO

SURVEY DATE: AUGUST 07, 2012	PAGE: 1 OF 1
DRAFTING DATE: AUGUST 16, 2012	
APPROVED BY: CH	DRAWN BY: DDSI FILE: 12-077

LOCATION VERIFICATION MAP



SCALE: 1" = 2000'

CONTOUR INTERVAL: 10'

SEC. 4 TWP. 21-S RGE. 33-E
 SURVEY N.M.P.M.
 COUNTY LEA STATE NEW MEXICO
 DESCRIPTION 3300' FNL & 50' FWL
 ELEVATION 3747'
 OPERATOR COG OPERATING, LLC
 LEASE CORAZON ST UNIT
 U.S.G.S. TOPOGRAPHIC MAP
LEA, N.M.

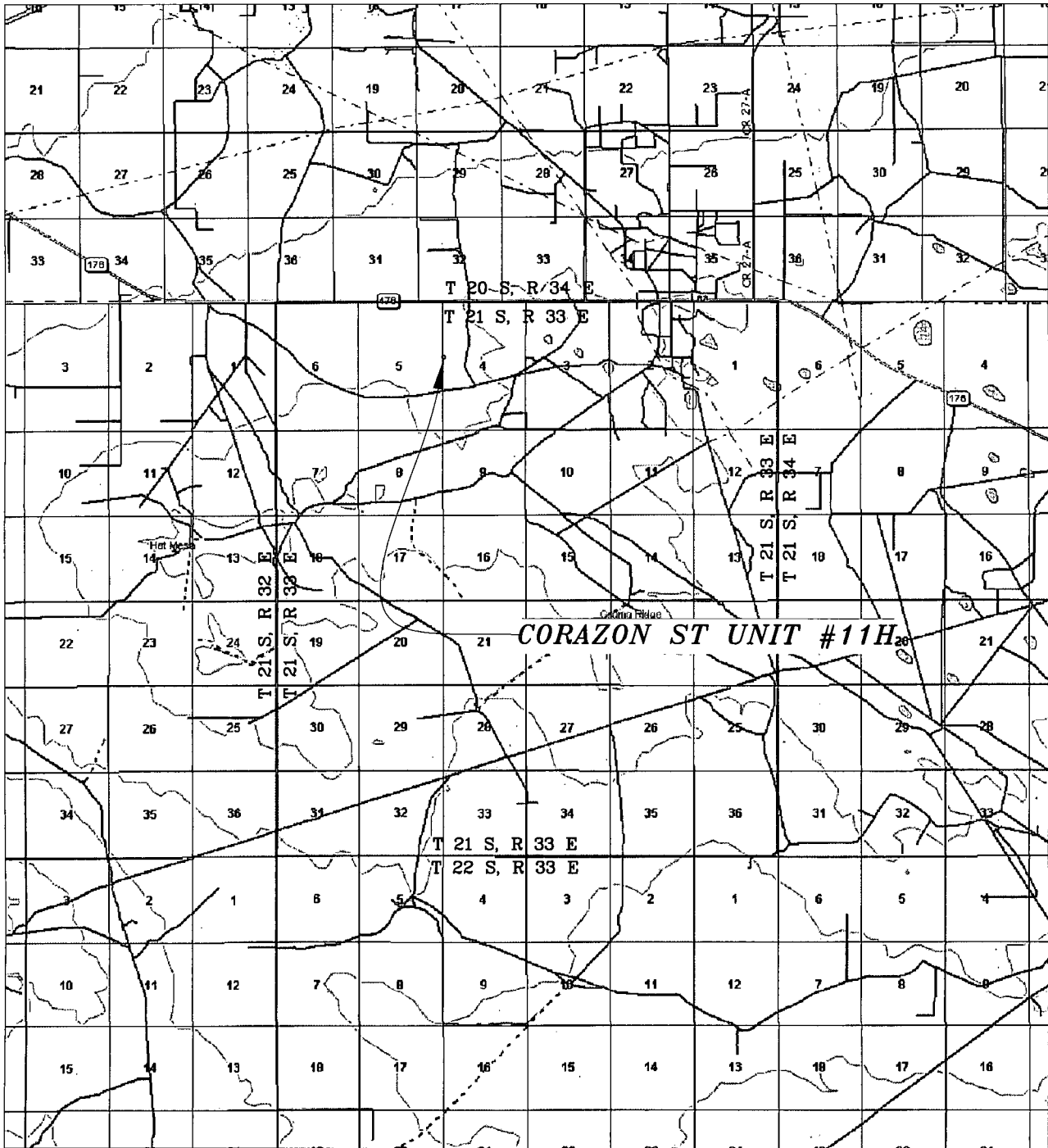
HARCROW SURVEYING
 1107 WATSON, ARTESIA N.M. 88210
 PH: (575) 513-2570
 FAX: (575) 746-2808
 EST. 2007



COG OPERATING, LLC

SURVEY DATE: AUGUST 07, 2012	PAGE: 1 OF 1
DRAFTING DATE: AUGUST 16, 2012	
APPROVED BY: CH	DRAWN BY: DDSI FILE: 12-077

VICINITY MAP



SEC. 4 TWP. 21-S RGE. 33-E
 SURVEY N.M.P.M.
 COUNTY LEA STATE NEW MEXICO
 DESCRIPTION 3300' FNL & 50' FWL
 ELEVATION 3747'
 OPERATOR COG OPERATING, LLC
 LEASE CORAZON ST UNIT

SCALE: 1" = 2 MILES

HARCROW SURVEYING
 1107 WATSON, ARTESIA N.M. 88210
 PH: (575) 513-2570
 FAX: (575) 746-2808
 EST. 2007



COG OPERATING, LLC

SURVEY DATE: AUGUST 07, 2012	PAGE: 1 OF 1
DRAFTING DATE: AUGUST 16, 2012	
APPROVED BY: CH	DRAWN BY: DDSI FILE: 12-077