

District I
1625 N. French Dr., Hobbs, NM 88240
Phone: (575) 393-6161 Fax: (575) 393-0720
District II
811 S. First St., Artesia, NM 88210
Phone: (575) 748-1283 Fax: (575) 748-9720
District III
1000 Rio Brazos Road, Aztec, NM 87410
Phone: (505) 334-6178 Fax: (505) 334-6170
District IV
1220 S. St. Francis Dr., Sante Fe, NM 87505
Phone: (505) 476-3460 Fax: (505) 476-3462

State of New Mexico
Energy, Minerals & Natural Resources
Department
OIL CONSERVATION DIVISION
1220 South St. Francis Dr.
Sante Fe, NM 87505

FORM C-102
Revised August 1, 2011
Submit one copy to appropriate
District Office

AMENDED REPORT

RECEIVED
WELL LOCATION AND ACREAGE DEDICATION PLAT

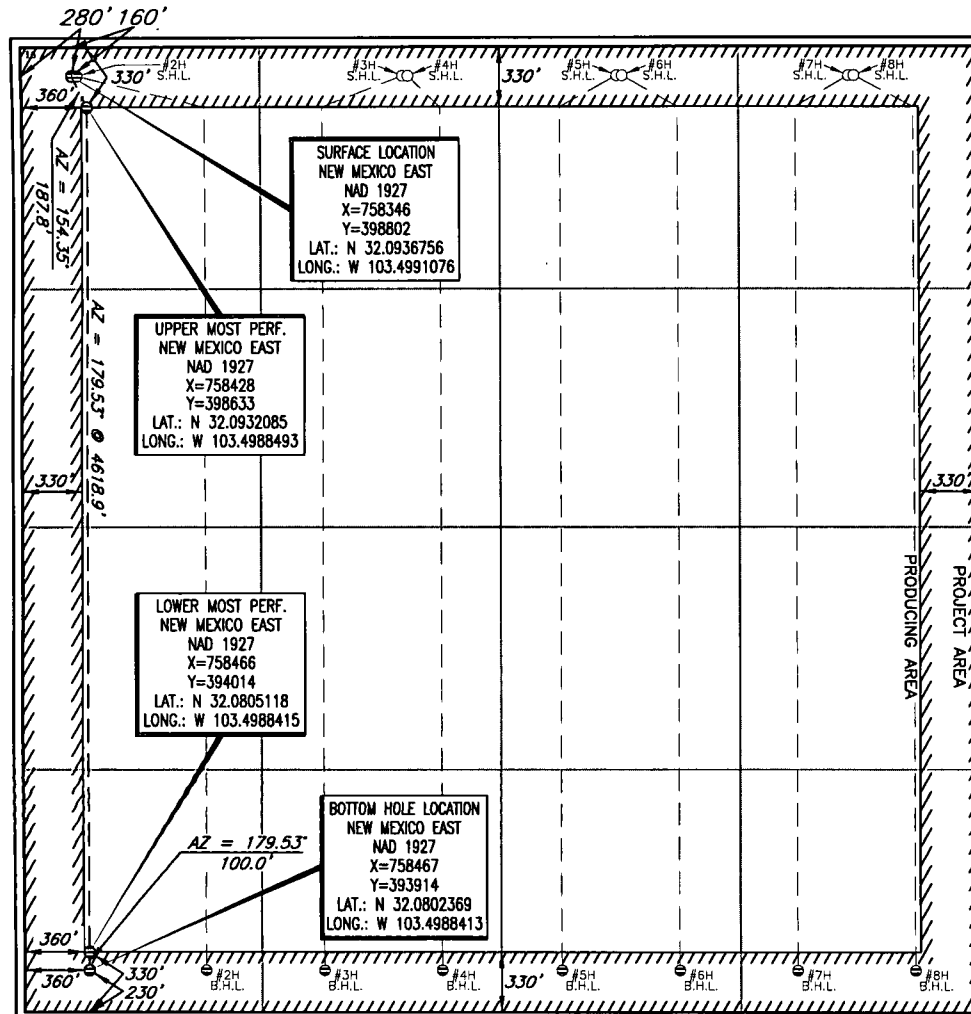
¹ API Number 30-025- 40958	² Pool Code 97900	³ Pool Name Red Hills; Bone Spring Upper Shale
⁴ Property Code 39673	⁵ Property Name CONDOR 32 STATE	
¹⁰ OGRID No. 7377	⁸ Operator Name EOG RESOURCES, INC.	⁶ Well Number #1H ⁹ Elevation 3323'

10 Surface Location									
UL or lot no.	Section	Township	Range	Lot Idn	Feet from the	North/South line	Feet from the	East/West line	County
D	32	25-S	34-E	-	160'	NORTH	280'	WEST	LEA

UL or lot no.	Section	Township	Range	Lot Idn	Feet from the	North/South line	Feet from the	East/West line	County
M	32	25-S	34-E	-	230'	SOUTH	360'	WEST	LEA

13 Dedicated Acres 640	13 Joint or Infill	14 Consolidation Code	15 Order No.
---------------------------	--------------------	-----------------------	--------------

No allowable will be assigned to this completion until all interests have been consolidated or a non-standard unit has been approved by the division.



17 OPERATOR CERTIFICATION

I hereby certify that the information contained herein is true and complete to the best of my knowledge and belief, and that this organization either owns a working interest or unleased mineral interest in the land including the proposed bottom hole location or has a right to drill this well at this location pursuant to a contract with an owner of such a mineral or working interest, or to a voluntary pooling agreement or a compulsory pooling order heretofore entered by the division.

Stan Wagner 1/30/13
Signature Date

Stan Wagner
Printed Name

E-mail Address

18 SURVEYOR CERTIFICATION

I hereby certify that the well location shown on this plat was plotted from field notes of actual surveys made by me or under my supervision, and that the same is true to the best of my belief.

Date of Survey
Signature and Title of Professional Surveyor

1/18/2013
MICHAEL BROWN
NEW MEXICO
18329
PROFESSIONAL SURVEYOR

Certificate Number

FEB 05 2013 *Ke*

Permit Information:

Well Name: Condor 32 State No. 1H

Location:

SL: 160' FNL & 280' FWL, Section 32, T-25-S, R-34-E, Lea Co., N.M.

BHL: 230' FSL & 360' FWL, Section 32, T-25-S, R-34-E, Lea Co., N.M.

Casing Program:

Hole Size	Interval	Csg OD	Weight	Grade	Conn	DF _{min} Collapse	DF _{min} Burst	DF _{min} Tension
17.5"	0 - 960'	13.375"	54.5#	J55	STC	1.125	1.25	1.60
12.25"	0-4000'	9.625"	40#	J55	LTC	1.125	1.25	1.60
12.25"	4000' - 5150'	9.625"	40#	HCK-55	LTC	1.125	1.25	1.60
8.75"	0'-14,415'	5.5"	17#	HCP-110	LTC	1.125	1.25	1.60

Cement Program:

Depth	No. Sacks	Wt. ppg	Yld Ft ³ /ft	Slurry Description
960'	300	13.5	1.73	Class C + 4.0% Bentonite + 0.6% CD-32 + 0.5% CaCl ₂ + 0.25 lb/sk Cello-Flake (TOC @ Surface)
	300	14.8	1.34	Class C + 0.6% FL-62 + 0.25 lb/sk Cello-Flake + 0.2% Sodium Metasilicate
5,150'	825	12.7	2.22	Class 'C' + 1.50% R-3 + 0.25 lb/sk Cello-Flake + 2.0% Sodium Metasilicate + 10% Salt + 0.005 lb/sk Static Free
	200	14.8	1.32	Tail: Class 'C' + 0.25 lb/sk Cello Flake + 0.005 lb/sk Static Free
14,415'	375	10.8	3.67	60:40:0 Class C + 15.0 pps BA-90 + 4% MPA-5 + 3.0% SMS + 5.0% A-10 + 1.0% BA-10A + 0.80% ASA-301 + 2.55% R-21 + 8.0 pps LCM-1
	400	11.8	2.38	50:50:10 Class H + 0.80% FL-52 + 0.30% ASA-301 + 0.40% SMS + 2.0% Salt + 0.30% R-21 + 3.0 pps LCM-1 + 0.25 pps Celloflake
	1300	14.2	1.28	50:50:2 Class H + 0.65% FL-52 + 0.45% CD-32 + 0.10% SMS + 2.0% Salt

Mud Program:

Depth	Type	Weight (ppg)	Viscosity	Water Loss
0 - 960'	Fresh - Gel	8.6-8.8	28-34	N/c
960' - 5,150'	Brine	10.0-10.2	28-34	N/c
5,150' - 9,232'	Cut Brine	8.4-9.0	28-34	N/c
KOP - 14,415' Lateral	Cut Brine	9.0-9.5	40-42	N/c

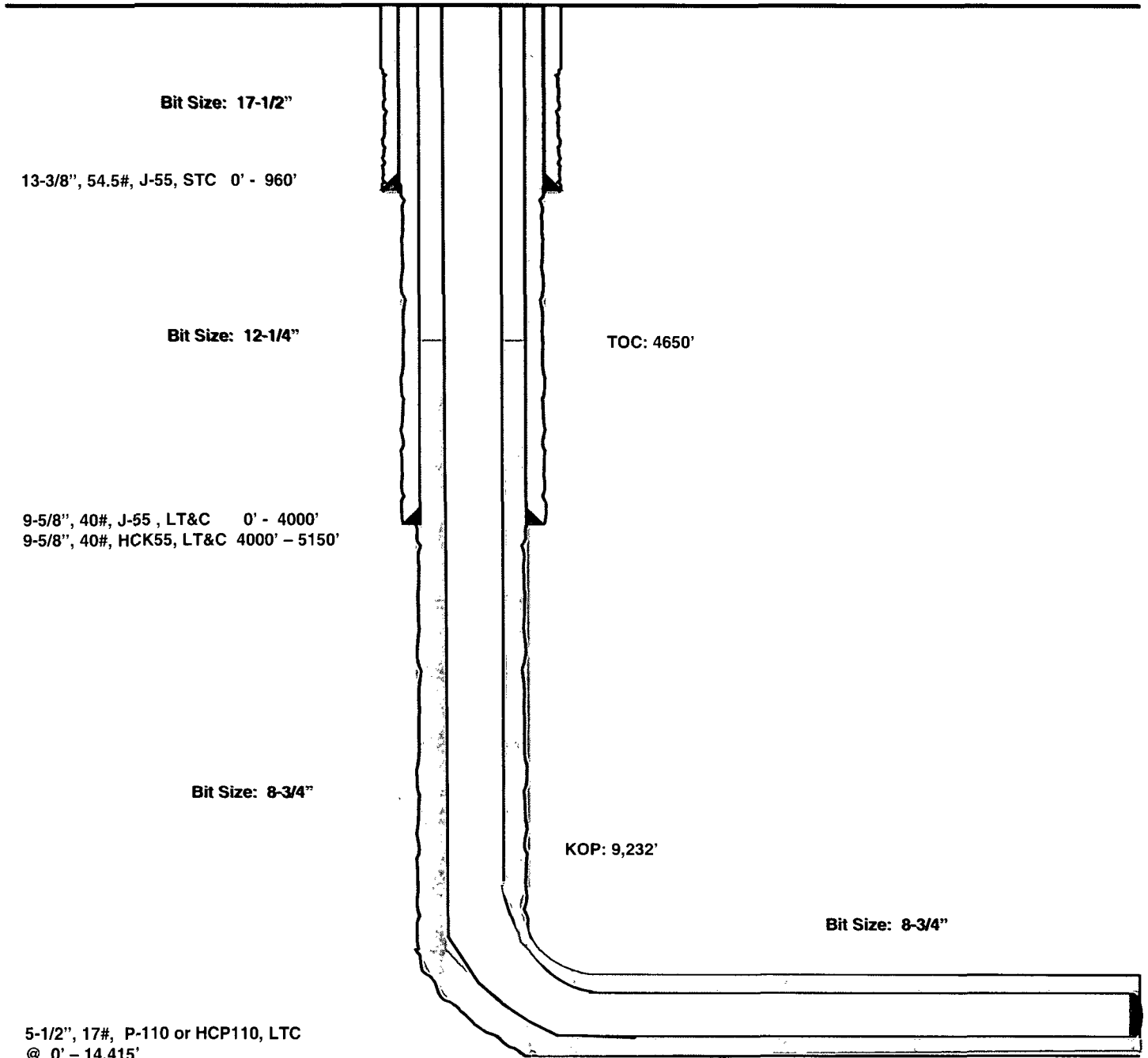
Condor 32 State #1H
Pitchfork Ranch
Lea County, New Mexico

160' FNL
280' FWL
Section 32
T-25-S, R-34-E

Proposed Wellbore

KB: 3,353'
GL: 3,323'

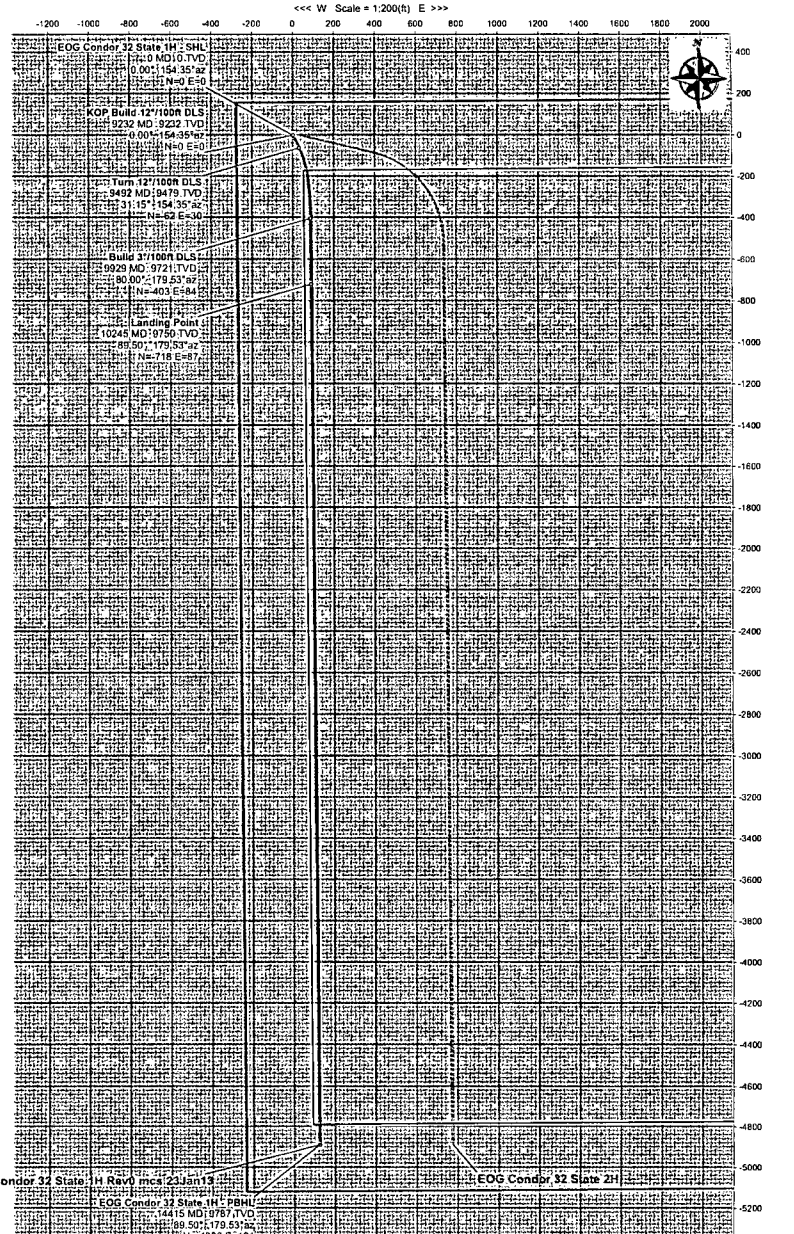
API: 30-025-



Lateral: 14,415' MD, 9,786' TVD
BH Location: 230' FSL & 360' FWL
Section 32
T-25-S, R-34-E

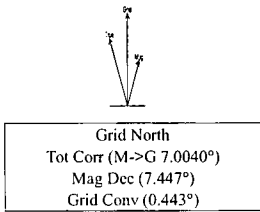
WELL	Condor 32 State 1H	FIELD	Lea County, NM (NAD 27)	STRUCTURE	Cactus 123
------	--------------------	-------	-------------------------	-----------	------------

Magnetic Parameters	Model: IBC43N 2012	Dip: 59.996°	Date: January 23, 2013	Surface Location	Lat: N 32 53.7232	Long: W 103 29 56.791	NA1227 New Mexico State Plane, Eastern Zone, US Feet	Miscellaneous	Site: Condor 32 State 1H	TVD Ref: KRN33510 above 1
		Mag Dec: 7.447°	FS: 48361.261		North: 399802.00 815	East: 758346.00 815	Grid Conv: 0.441°	Plan: Rev0 mcs 23Jan13	Srvy Date: January 23, 2013	

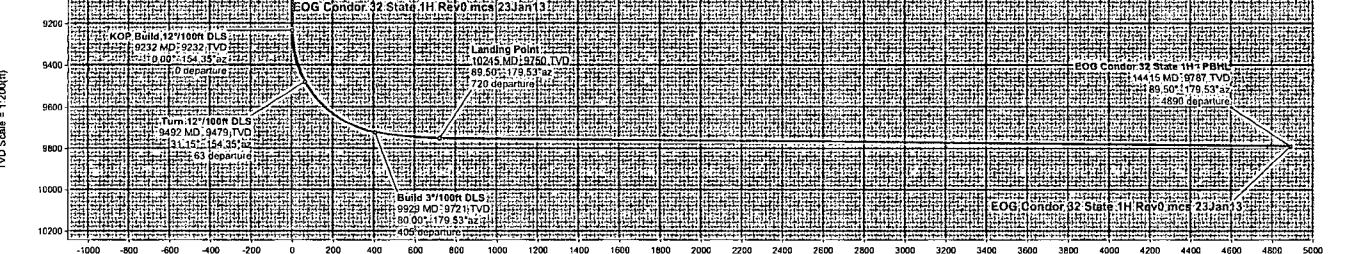


Legend

EOG Condor 32 State 1H - PBHL
EOG Condor 32 State 1H - Landing
EOG Condor 32 State 1H - LMF
EOG Condor 32 State 1H - 200 mcs LMF
EOG Condor 32 State 1H - LMF
EOG Condor 32 State 1H - 200 mcs LMF
EOG Condor 32 State 1H - LMF
EOG Condor 32 State 1H - 200 mcs LMF



Comments	Survey MD	Inc	Azim	TVD	SS TVD	Critical Points			Longitude	Latitude	Easting	Northing	DLS	Tool Face
						VS	NS	EW						
SHL	0.00	0.00	154.35	0.00	-3353.00	0.00	0.00	0.00	W 103 29 56.791 N 32 5 37.232	758346.00	398802.00		154.35	
KOP Build 12°/100ft DLS	9232.01	0.00	154.35	9232.01	5879.01	0.00	0.00	0.00	W 103 29 56.791 N 32 5 37.232	758346.00	398802.00	0.00	154.35	
Turn 12°/100ft DLS	9491.59	31.15	154.35	9478.99	6125.99	62.78	-62.06	29.80	W 103 29 56.450 N 32 5 36.616	758375.80	398739.94	12.00	31.91	
Build 3°/100ft DLS	9928.57	80.00	179.53	9721.06	6368.06	405.22	-403.26	84.35	W 103 29 55.847 N 32 5 33.235	758430.35	398398.75	12.00	0.00	
Landing Point	10245.24	89.50	179.53	9750.00	6397.00	720.16	-718.23	86.93	W 103 29 55.845 N 32 5 30.118	758432.93	398083.78	3.00	128.17	
PBHL	14415.39	89.50	179.53	9786.50	6433.50	4889.58	-4888.08	121.00	W 103 29 55.824 N 32 4 48.853	758467.00	393914.00	0.00		



Drawn By: ASB/chr
 Date Created: January 28, 2013 9:48:42 PM ...
 Checked By: _____
 Checked Date: _____
 Approved By: _____
 Approved Date: _____



EOG Condor 32 State 1H Rev0 mcs 23Jan13 Proposal Geodetic Report

(Non-Def Plan)

Report Date: January 28, 2013 - 01:45 PM
 Client: Eog Resources
 Field: NM Lea County (NAD 27)
 Structure / Slot: EOG Condor 32 State 1H / EOG Condor 32 State 1H
 Well: EOG Condor 32 State 1H
 Borehole: Original Borehole
 UWI / API#: Unknown / Unknown
 Survey Name: EOG Condor 32 State 1H Rev0 mcs 23Jan13
 Survey Date: January 23, 2013
 Tort / AHD / DDI / ERD Ratio: 93.092 ° / 4901.591 ft / 5.827 / 0.501
 Coordinate Reference System: NAD27 New Mexico State Plane, Eastern Zone, US Feet
 Location Lat / Long: N 32° 5' 37.23207", W 103° 29' 56.79071"
 Location Grid N/E Y/X: N 398802.000 ftUS, E 758346.000 ftUS
 CRS Grid Convergence Angle: 0.4433 °
 Grid Scale Factor: 0.99998553

Survey / DLS Computation: Minimum Curvature / Lubinski
 Vertical Section Azimuth: 178.582 ° (Grid North)
 Vertical Section Origin: 0.000 ft, 0.000 ft
 TVD Reference Datum: RKB
 TVD Reference Elevation: 3353.000 ft above
 Seabed / Ground Elevation: 3323.000 ft above
 Magnetic Declination: 7.447 °
 Total Gravity Field Strength: 998.4833mgn (9.80665 Based)
 Total Magnetic Field Strength: 48367.526 nT
 Magnetic Dip Angle: 59.996 °
 Declination Date: January 23, 2013
 Magnetic Declination Model: BGGM 2012
 North Reference: Grid North
 Grid Convergence Used: 0.4433 °
 Total Corr Mag North->Grid North: 7.0040 °
 Local Coord Referenced To: Structure Reference Point

Comments	MD (ft)	Incl (°)	Azim Grid (°)	TVD (ft)	VSEC (ft)	NS (ft)	EW (ft)	DLS (°/100ft)	Northing (ftUS)	Easting (ftUS)	Latitude (N/S ° ' ")	Longitude (E/W ° ' ")
EOG Condor 32 State 1H - SHL	0.00	0.00	154.35	0.00	0.00	0.00	0.00	N/A	398802.00	758346.00	N 32 5 37.23	W 103 29 56.79
	100.00	0.00	154.35	100.00	0.00	0.00	0.00	0.00	398802.00	758346.00	N 32 5 37.23	W 103 29 56.79
	200.00	0.00	154.35	200.00	0.00	0.00	0.00	0.00	398802.00	758346.00	N 32 5 37.23	W 103 29 56.79
	300.00	0.00	154.35	300.00	0.00	0.00	0.00	0.00	398802.00	758346.00	N 32 5 37.23	W 103 29 56.79
	400.00	0.00	154.35	400.00	0.00	0.00	0.00	0.00	398802.00	758346.00	N 32 5 37.23	W 103 29 56.79
	500.00	0.00	154.35	500.00	0.00	0.00	0.00	0.00	398802.00	758346.00	N 32 5 37.23	W 103 29 56.79
	600.00	0.00	154.35	600.00	0.00	0.00	0.00	0.00	398802.00	758346.00	N 32 5 37.23	W 103 29 56.79
	700.00	0.00	154.35	700.00	0.00	0.00	0.00	0.00	398802.00	758346.00	N 32 5 37.23	W 103 29 56.79
	800.00	0.00	154.35	800.00	0.00	0.00	0.00	0.00	398802.00	758346.00	N 32 5 37.23	W 103 29 56.79
	900.00	0.00	154.35	900.00	0.00	0.00	0.00	0.00	398802.00	758346.00	N 32 5 37.23	W 103 29 56.79
	1000.00	0.00	154.35	1000.00	0.00	0.00	0.00	0.00	398802.00	758346.00	N 32 5 37.23	W 103 29 56.79
	1100.00	0.00	154.35	1100.00	0.00	0.00	0.00	0.00	398802.00	758346.00	N 32 5 37.23	W 103 29 56.79
	1200.00	0.00	154.35	1200.00	0.00	0.00	0.00	0.00	398802.00	758346.00	N 32 5 37.23	W 103 29 56.79
	1300.00	0.00	154.35	1300.00	0.00	0.00	0.00	0.00	398802.00	758346.00	N 32 5 37.23	W 103 29 56.79
	1400.00	0.00	154.35	1400.00	0.00	0.00	0.00	0.00	398802.00	758346.00	N 32 5 37.23	W 103 29 56.79
	1500.00	0.00	154.35	1500.00	0.00	0.00	0.00	0.00	398802.00	758346.00	N 32 5 37.23	W 103 29 56.79
	1600.00	0.00	154.35	1600.00	0.00	0.00	0.00	0.00	398802.00	758346.00	N 32 5 37.23	W 103 29 56.79
	1700.00	0.00	154.35	1700.00	0.00	0.00	0.00	0.00	398802.00	758346.00	N 32 5 37.23	W 103 29 56.79
	1800.00	0.00	154.35	1800.00	0.00	0.00	0.00	0.00	398802.00	758346.00	N 32 5 37.23	W 103 29 56.79
	1900.00	0.00	154.35	1900.00	0.00	0.00	0.00	0.00	398802.00	758346.00	N 32 5 37.23	W 103 29 56.79
	2000.00	0.00	154.35	2000.00	0.00	0.00	0.00	0.00	398802.00	758346.00	N 32 5 37.23	W 103 29 56.79
	2100.00	0.00	154.35	2100.00	0.00	0.00	0.00	0.00	398802.00	758346.00	N 32 5 37.23	W 103 29 56.79
	2200.00	0.00	154.35	2200.00	0.00	0.00	0.00	0.00	398802.00	758346.00	N 32 5 37.23	W 103 29 56.79
	2300.00	0.00	154.35	2300.00	0.00	0.00	0.00	0.00	398802.00	758346.00	N 32 5 37.23	W 103 29 56.79
	2400.00	0.00	154.35	2400.00	0.00	0.00	0.00	0.00	398802.00	758346.00	N 32 5 37.23	W 103 29 56.79
	2500.00	0.00	154.35	2500.00	0.00	0.00	0.00	0.00	398802.00	758346.00	N 32 5 37.23	W 103 29 56.79
	2600.00	0.00	154.35	2600.00	0.00	0.00	0.00	0.00	398802.00	758346.00	N 32 5 37.23	W 103 29 56.79
	2700.00	0.00	154.35	2700.00	0.00	0.00	0.00	0.00	398802.00	758346.00	N 32 5 37.23	W 103 29 56.79
	2800.00	0.00	154.35	2800.00	0.00	0.00	0.00	0.00	398802.00	758346.00	N 32 5 37.23	W 103 29 56.79
	2900.00	0.00	154.35	2900.00	0.00	0.00	0.00	0.00	398802.00	758346.00	N 32 5 37.23	W 103 29 56.79
	3000.00	0.00	154.35	3000.00	0.00	0.00	0.00	0.00	398802.00	758346.00	N 32 5 37.23	W 103 29 56.79
	3100.00	0.00	154.35	3100.00	0.00	0.00	0.00	0.00	398802.00	758346.00	N 32 5 37.23	W 103 29 56.79
	3200.00	0.00	154.35	3200.00	0.00	0.00	0.00	0.00	398802.00	758346.00	N 32 5 37.23	W 103 29 56.79
	3300.00	0.00	154.35	3300.00	0.00	0.00	0.00	0.00	398802.00	758346.00	N 32 5 37.23	W 103 29 56.79
	3400.00	0.00	154.35	3400.00	0.00	0.00	0.00	0.00	398802.00	758346.00	N 32 5 37.23	W 103 29 56.79
	3500.00	0.00	154.35	3500.00	0.00	0.00	0.00	0.00	398802.00	758346.00	N 32 5 37.23	W 103 29 56.79
	3600.00	0.00	154.35	3600.00	0.00	0.00	0.00	0.00	398802.00	758346.00	N 32 5 37.23	W 103 29 56.79
	3700.00	0.00	154.35	3700.00	0.00	0.00	0.00	0.00	398802.00	758346.00	N 32 5 37.23	W 103 29 56.79
	3800.00	0.00	154.35	3800.00	0.00	0.00	0.00	0.00	398802.00	758346.00	N 32 5 37.23	W 103 29 56.79
	3900.00	0.00	154.35	3900.00	0.00	0.00	0.00	0.00	398802.00	758346.00	N 32 5 37.23	W 103 29 56.79
	4000.00	0.00	154.35	4000.00	0.00	0.00	0.00	0.00	398802.00	758346.00	N 32 5 37.23	W 103 29 56.79
	4100.00	0.00	154.35	4100.00	0.00	0.00	0.00	0.00	398802.00	758346.00	N 32 5 37.23	W 103 29 56.79
	4200.00	0.00	154.35	4200.00	0.00	0.00	0.00	0.00	398802.00	758346.00	N 32 5 37.23	W 103 29 56.79
	4300.00	0.00	154.35	4300.00	0.00	0.00	0.00	0.00	398802.00	758346.00	N 32 5 37.23	W 103 29 56.79
	4400.00	0.00	154.35	4400.00	0.00	0.00	0.00	0.00	398802.00	758346.00	N 32 5 37.23	W 103 29 56.79
	4500.00	0.00	154.35	4500.00	0.00	0.00	0.00	0.00	398802.00	758346.00	N 32 5 37.23	W 103 29 56.79
	4600.00	0.00	154.35	4600.00	0.00	0.00	0.00	0.00	398802.00	758346.00	N 32 5 37.23	W 103 29 56.79
	4700.00	0.00	154.35	4700.00	0.00	0.00	0.00	0.00	398802.00	758346.00	N 32 5 37.23	W 103 29 56.79
	4800.00	0.00	154.35	4800.00	0.00	0.00	0.00	0.00	398802.00	758346.00	N 32 5 37.23	W 103 29 56.79
	4900.00	0.00	154.35	4900.00	0.00	0.00	0.00	0.00	398802.00	758346.00	N 32 5 37.23	W 103 29 56.79
	5000.00	0.00	154.35	5000.00	0.00	0.00	0.00	0.00	398802.00	758346.00	N 32 5 37.23	W 103 29 56.79
	5100.00	0.00	154.35	5100.00	0.00	0.00	0.00	0.00	398802.00	758346.00	N 32 5 37.23	W 103 29 56.79
	5200.00	0.00	154.35	5200.00	0.00	0.00	0.00	0.00	398802.00	758346.00	N 32 5 37.23	W 103 29 56.79
	5300.00	0.00	154.35	5300.00	0.00	0.00	0.00	0.00	398802.00	758346.00	N 32 5 37.23	W 103 29 56.79
	5400.00	0.00	154.35	5400.00	0.00	0.00	0.00	0.00	398802.00	758346.00	N 32 5 37.23	W 103 29 56.79
	5500.00	0.00	154.35	5500.00	0.00	0.00	0.00	0.00	398802.00	758346.00	N 32 5 37.23	W 103 29 56.79
	5600.00	0.00	154.35	5600.00	0.00	0.00	0.00	0.00	398802.00	758346.00	N 32 5 37.23	W 103 29 56.79
	5700.00	0.00	154.35	5700.00	0.00	0.00	0.00	0.00	398802.00	758346.00	N 32 5 37.23	W 103 29 56.79
	5800.00	0.00	154.35	5800.00	0.00	0.00	0.00	0.00	398802.00	758346.00	N 32 5 37.23	W 103 29 56.79
	5900.00	0.00	154.35	5900.00	0.00	0.00	0.00	0.00	398802.00	758346.00	N 32 5 37.23	W 103 29 56.79

Comments	MD (ft)	Incl (°)	Azim Grid (°)	TVD (ft)	VSEC (ft)	NS (ft)	EW (ft)	DLS (*/100ft)	Northing (ftUS)	Easting (ftUS)	Latitude (N/S ° ' ")	Longitude (E/W ° ' ")
	6000.00	0.00	154.35	6000.00	0.00	0.00	0.00	0.00	398802.00	758346.00	N 32 5 37.23	W 103 29 56.79
	6100.00	0.00	154.35	6100.00	0.00	0.00	0.00	0.00	398802.00	758346.00	N 32 5 37.23	W 103 29 56.79
	6200.00	0.00	154.35	6200.00	0.00	0.00	0.00	0.00	398802.00	758346.00	N 32 5 37.23	W 103 29 56.79
	6300.00	0.00	154.35	6300.00	0.00	0.00	0.00	0.00	398802.00	758346.00	N 32 5 37.23	W 103 29 56.79
	6400.00	0.00	154.35	6400.00	0.00	0.00	0.00	0.00	398802.00	758346.00	N 32 5 37.23	W 103 29 56.79
	6500.00	0.00	154.35	6500.00	0.00	0.00	0.00	0.00	398802.00	758346.00	N 32 5 37.23	W 103 29 56.79
	6600.00	0.00	154.35	6600.00	0.00	0.00	0.00	0.00	398802.00	758346.00	N 32 5 37.23	W 103 29 56.79
	6700.00	0.00	154.35	6700.00	0.00	0.00	0.00	0.00	398802.00	758346.00	N 32 5 37.23	W 103 29 56.79
	6800.00	0.00	154.35	6800.00	0.00	0.00	0.00	0.00	398802.00	758346.00	N 32 5 37.23	W 103 29 56.79
	6900.00	0.00	154.35	6900.00	0.00	0.00	0.00	0.00	398802.00	758346.00	N 32 5 37.23	W 103 29 56.79
	7000.00	0.00	154.35	7000.00	0.00	0.00	0.00	0.00	398802.00	758346.00	N 32 5 37.23	W 103 29 56.79
	7100.00	0.00	154.35	7100.00	0.00	0.00	0.00	0.00	398802.00	758346.00	N 32 5 37.23	W 103 29 56.79
	7200.00	0.00	154.35	7200.00	0.00	0.00	0.00	0.00	398802.00	758346.00	N 32 5 37.23	W 103 29 56.79
	7300.00	0.00	154.35	7300.00	0.00	0.00	0.00	0.00	398802.00	758346.00	N 32 5 37.23	W 103 29 56.79
	7400.00	0.00	154.35	7400.00	0.00	0.00	0.00	0.00	398802.00	758346.00	N 32 5 37.23	W 103 29 56.79
	7500.00	0.00	154.35	7500.00	0.00	0.00	0.00	0.00	398802.00	758346.00	N 32 5 37.23	W 103 29 56.79
	7600.00	0.00	154.35	7600.00	0.00	0.00	0.00	0.00	398802.00	758346.00	N 32 5 37.23	W 103 29 56.79
	7700.00	0.00	154.35	7700.00	0.00	0.00	0.00	0.00	398802.00	758346.00	N 32 5 37.23	W 103 29 56.79
	7800.00	0.00	154.35	7800.00	0.00	0.00	0.00	0.00	398802.00	758346.00	N 32 5 37.23	W 103 29 56.79
	7900.00	0.00	154.35	7900.00	0.00	0.00	0.00	0.00	398802.00	758346.00	N 32 5 37.23	W 103 29 56.79
	8000.00	0.00	154.35	8000.00	0.00	0.00	0.00	0.00	398802.00	758346.00	N 32 5 37.23	W 103 29 56.79
	8100.00	0.00	154.35	8100.00	0.00	0.00	0.00	0.00	398802.00	758346.00	N 32 5 37.23	W 103 29 56.79
	8200.00	0.00	154.35	8200.00	0.00	0.00	0.00	0.00	398802.00	758346.00	N 32 5 37.23	W 103 29 56.79
	8300.00	0.00	154.35	8300.00	0.00	0.00	0.00	0.00	398802.00	758346.00	N 32 5 37.23	W 103 29 56.79
	8400.00	0.00	154.35	8400.00	0.00	0.00	0.00	0.00	398802.00	758346.00	N 32 5 37.23	W 103 29 56.79
	8500.00	0.00	154.35	8500.00	0.00	0.00	0.00	0.00	398802.00	758346.00	N 32 5 37.23	W 103 29 56.79
	8600.00	0.00	154.35	8600.00	0.00	0.00	0.00	0.00	398802.00	758346.00	N 32 5 37.23	W 103 29 56.79
	8700.00	0.00	154.35	8700.00	0.00	0.00	0.00	0.00	398802.00	758346.00	N 32 5 37.23	W 103 29 56.79
	8800.00	0.00	154.35	8800.00	0.00	0.00	0.00	0.00	398802.00	758346.00	N 32 5 37.23	W 103 29 56.79
	8900.00	0.00	154.35	8900.00	0.00	0.00	0.00	0.00	398802.00	758346.00	N 32 5 37.23	W 103 29 56.79
	9000.00	0.00	154.35	9000.00	0.00	0.00	0.00	0.00	398802.00	758346.00	N 32 5 37.23	W 103 29 56.79
	9100.00	0.00	154.35	9100.00	0.00	0.00	0.00	0.00	398802.00	758346.00	N 32 5 37.23	W 103 29 56.79
	9200.00	0.00	154.35	9200.00	0.00	0.00	0.00	0.00	398802.00	758346.00	N 32 5 37.23	W 103 29 56.79
KOP Build 12*/100ft DLS	9232.01	0.00	154.35	9232.01	0.00	0.00	0.00	0.00	398802.00	758346.00	N 32 5 37.23	W 103 29 56.79
	9300.00	8.16	154.35	9299.77	4.41	-4.36	2.09	12.00	398797.64	758348.09	N 32 5 37.19	W 103 29 56.77
	9400.00	20.16	154.35	9396.56	26.67	-26.37	12.66	12.00	398775.63	758358.66	N 32 5 36.97	W 103 29 56.65
Turn 12*/100ft DLS	9491.59	31.15	154.35	9478.99	62.78	-62.06	29.80	12.00	398739.94	758375.80	N 32 5 36.62	W 103 29 56.45
	9500.00	32.01	155.36	9486.15	66.81	-66.04	31.67	12.00	398735.96	758377.67	N 32 5 36.58	W 103 29 56.43
	9600.00	42.69	164.46	9565.59	124.25	-123.00	51.88	12.00	398679.00	758397.88	N 32 5 36.01	W 103 29 56.20
	9700.00	53.85	170.42	9632.08	197.36	-195.74	67.75	12.00	398606.26	758413.74	N 32 5 35.29	W 103 29 56.02
	9800.00	65.22	174.86	9682.72	282.94	-281.08	78.57	12.00	398520.93	758424.57	N 32 5 34.44	W 103 29 55.90
	9900.00	76.71	178.55	9715.29	377.24	-375.28	83.88	12.00	398426.72	758429.88	N 32 5 33.51	W 103 29 55.85
Build 3*/100ft DLS	9928.57	80.00	179.53	9721.06	405.22	-403.26	84.35	12.00	398398.75	758430.35	N 32 5 33.24	W 103 29 55.85
	10000.00	82.14	179.53	9732.14	475.77	-473.82	84.93	3.00	398328.19	758430.93	N 32 5 32.54	W 103 29 55.85
	10100.00	85.14	179.53	9743.21	575.13	-573.19	85.74	3.00	398228.82	758431.74	N 32 5 31.55	W 103 29 55.85
	10200.00	88.14	179.53	9749.07	674.94	-673.00	86.56	3.00	398129.01	758432.56	N 32 5 30.57	W 103 29 55.85
Landing Point	10245.24	89.50	179.53	9750.00	720.16	-718.23	86.93	3.00	398083.78	758432.93	N 32 5 30.12	W 103 29 55.84
	10300.00	89.50	179.53	9750.48	774.91	-772.98	87.38	0.00	398029.03	758433.38	N 32 5 29.58	W 103 29 55.84
	10400.00	89.50	179.53	9751.35	874.89	-872.98	88.20	0.00	397929.04	758434.20	N 32 5 28.59	W 103 29 55.84
	10500.00	89.50	179.53	9752.22	974.87	-972.97	89.02	0.00	397829.05	758435.02	N 32 5 27.60	W 103 29 55.84
	10600.00	89.50	179.53	9753.10	1074.86	-1072.96	89.84	0.00	397729.06	758435.84	N 32 5 26.61	W 103 29 55.84
	10700.00	89.50	179.53	9753.97	1174.84	-1172.95	90.66	0.00	397629.06	758436.66	N 32 5 25.62	W 103 29 55.84
	10800.00	89.50	179.53	9754.84	1274.82	-1272.95	91.48	0.00	397529.07	758437.48	N 32 5 24.63	W 103 29 55.84
	10900.00	89.50	179.53	9755.72	1374.80	-1372.94	92.30	0.00	397429.08	758438.30	N 32 5 23.64	W 103 29 55.84
	11000.00	89.50	179.53	9756.59	1474.79	-1472.93	93.12	0.00	397329.09	758439.12	N 32 5 22.65	W 103 29 55.84
	11100.00	89.50	179.53	9757.46	1574.77	-1572.93	93.94	0.00	397229.10	758439.94	N 32 5 21.66	W 103 29 55.84
	11200.00	89.50	179.53	9758.34	1674.75	-1672.92	94.76	0.00	397129.11	758440.76	N 32 5 20.67	W 103 29 55.84
	11300.00	89.50	179.53	9759.21	1774.73	-1772.91	95.58	0.00	397029.12	758441.58	N 32 5 19.68	W 103 29 55.84
	11400.00	89.50	179.53	9760.09	1874.72	-1872.90	96.40	0.00	396929.13	758442.39	N 32 5 18.69	W 103 29 55.84
	11500.00	89.50	179.53	9760.96	1974.70	-1972.90	97.21	0.00	396829.14	758443.21	N 32 5 17.70	W 103 29 55.84
	11600.00	89.50	179.53	9761.83	2074.68	-2072.89	98.03	0.00	396729.14	758444.03	N 32 5 16.71	W 103 29 55.84
	11700.00	89.50	179.53	9762.71	2174.66	-2172.88	98.85	0.00	396629.15	758444.85	N 32 5 15.72	W 103 29 55.84
	11800.00	89.50	179.53	9763.58	2274.65	-2272.88	99.67	0.00	396529.16	758445.67	N 32 5 14.73	W 103 29 55.84
	11900.00	89.50	179.53	9764.46	2374.63	-2372.87	100.49	0.00	396429.17	758446.48	N 32 5 13.74	W 103 29 55.84
	12000.00	89.50	179.53	9765.33	2474.61	-2472.86	101.30	0.00	396329.18	758447.30	N 32 5 12.75	W 103 29 55.84
	12100.00	89.50	179.53	9766.21	2574.59	-2572.85	102.12	0.00	396229.19	758448.12	N 32 5 11.76	W 103 29 55.84
	12200.00	89.50	179.53	9767.08	2674.58	-2672.85	102.94	0.00	396129.20	758448.94	N 32 5 10.78	W 103 29 55.83
	12300.00	89.50	179.53	9767.96	2774.56	-2772.84	103.76	0.00	396029.21	758449.75	N 32 5 9.79	W 103 29 55.83
	12400.00	89.50	179.53	9768.83	2874.54	-2872.83	104.57	0.00	395929.21	758450.57	N 32 5 8.80	W 103 29 55.83
	12500.00	89.50	179.53	9769.71	2974.52	-2972.83	105.39	0.00	395829.22	758451.39	N 32 5 7.81	W 103 29 55.83
	12600.00	89.50	179.53	9770.58	3074.51	-3072.82	106.21	0.00	395729.23	758452.20	N 32 5 6.82	W 103 29 55.83
	12700.00	89.50	179.53	9771.46	3174.49	-3172.81	107.02	0.00	395629.24	758453.02	N 32 5 5.83	W 103 29 55.83
	12800.00	89.50	179.53	9772.34	3274.47	-3272.80	107.84	0.00	395529.25	758453.84	N 32 5 4.84	W 103 29 55.83
	12900.00	89.50	179.53	9773.21	3374.45	-3372.80	108.65	0.00	395429.26	758454.65	N 32 5 3.85	W 103 29 55.83
	13000.00	89.50	179.53	9774.09	3474.43	-3472.79	109.47	0.00	395329.27	758455.47	N 32 5 2.86	W 103 29 55.83
	13100.00	89.50	179.53	9774.96	3574.42	-3572.78	110.29	0.00	395229.28	758456.28	N 32 5 1.87	W 103 29 55.83
	13200.00	89.50	179.53	9775.84	3674.40	-3672.78	111.10	0.00	395129.29	758457.10	N 32 5 0.88	W 103 29 55.83
	13300.00	89.50	179.53	9776.72	3774.38	-3772.77	111.92</					

Comments	MD (ft)	Incl (°)	Azim Grid (°)	TVD (ft)	VSEC (ft)	NS (ft)	EW (ft)	DLS (°/100ft)	Northing (ftUS)	Easting (ftUS)	Latitude (N/S ° ' ")	Longitude (E/W ° ' ")
	13900.00	89.50	179.53	9781.98	4374.28	-4372.72	116.81	0.00	394429.35	758462.80	N 32 4 53.95 W	103 29 55.83
	14000.00	89.50	179.53	9782.85	4474.26	-4472.72	117.62	0.00	394329.36	758463.62	N 32 4 52.96 W	103 29 55.83
	14100.00	89.50	179.53	9783.73	4574.24	-4572.71	118.44	0.00	394229.36	758464.43	N 32 4 51.97 W	103 29 55.83
	14200.00	89.50	179.53	9784.61	4674.22	-4672.70	119.25	0.00	394129.37	758465.25	N 32 4 50.98 W	103 29 55.82
	14300.00	89.50	179.53	9785.49	4774.21	-4772.70	120.06	0.00	394029.38	758466.06	N 32 4 50.00 W	103 29 55.82
	14400.00	89.50	179.53	9786.36	4874.19	-4872.69	120.88	0.00	393929.39	758466.87	N 32 4 49.01 W	103 29 55.82
EOG Condor 32 State 1H - PBHL	14415.39	89.50	179.53	9786.50	4889.58	-4888.08	121.00	0.00	393914.00	758467.00	N 32 4 48.85 W	103 29 55.82

Survey Type: Non-Def Plan

Survey Error Model: ISCWSA Rev 0 *** 3-D 95.000% Confidence 2.7955 sigma

Survey Program:

Description	MD From (ft)	MD To (ft)	EOU Freq (ft)	Hole Size (in)	Casing Diameter (in)	Survey Tool Type	Borehole / Survey
	0.000	30.000	1/100.000	30.000	30.000	SLB_MWD-STD-Depth Only	Original Borehole / EOG Condor 32 State 1H Rev0 mcs 23Jan13
	30.000	14415.392	1/100.000	30.000	30.000	SLB_MWD-STD	Original Borehole / EOG Condor 32 State 1H Rev0 mcs 23Jan13

**EOG RESOURCES, INC.
CONDOR 32 STATE #1H**

Hydrogen Sulfide Plan Summary

- A. All personnel shall receive proper H₂S training in accordance with Onshore Order III.C.3.a.
- B. Briefing Area: two perpendicular areas will be designated by signs and readily accessible.
- C. Required Emergency Equipment:

- Well control equipment
 - a. Flare line 150' from wellhead to be ignited by flare gun.
 - b. Choke manifold with a remotely operated choke.
 - c. Mud/gas separator

- Protective equipment for essential personnel.

Breathing apparatus:

- a. Rescue Packs (SCBA) — 1 unit shall be placed at each breathing area, 2 shall be stored in the safety trailer.
- b. Work/Escapes packs — 4 packs shall be stored on the rig floor with sufficient air hose not to restrict work activity.
- c. Emergency Escape Packs — 4 packs shall be stored in the doghouse for emergency evacuation.

Auxiliary Rescue Equipment:

- a. Stretcher
- b. Two OSHA full body harness
- c. 100 ft 5/8 inch OSHA approved rope
- d. 1-20# class ABC fire extinguisher

- H₂S detection and monitoring equipment:

The stationary detector with three sensors will be placed in the upper dog house if equipped, set to visually alarm @ 10 ppm and audible @ 14 ppm. Calibrate a minimum of every 30 days or as needed. The sensors will be placed in the following places: Rig floor / Bell nipple / End of flow line or where well bore fluid is being discharged.

(Gas sample tubes will be stored in the safety trailer)

- Visual warning systems.
 - a. One color code condition sign will be placed at the entrance to the site reflecting the possible conditions at the site.
 - b. A colored condition flag will be on display, reflecting the current condition at the site at the time.
 - c. Two wind socks will be placed in strategic locations, visible from all angles.

**EOG RESOURCES, INC.
CONDOR 32 STATE #1H**

- **Mud program:**
The mud program has been designed to minimize the volume of H₂S circulated to surface. The operator will have the necessary mud products to minimize hazards while drilling in H₂S bearing zones.

- **Metallurgy:**
All drill strings, casings, tubing, wellhead, blowout preventer, drilling spool, kill lines, choke manifold and lines, and valves shall be suitable for H₂S service.

- **Communication:**
Communication will be via cell phones and land lines where available.

Emergency Assistance Telephone List

**EOG RESOURCES, INC.
CONDOR 32 STATE #1H**

PUBLIC SAFETY: **911 or**

Lea County Sheriff's Department	(575) 396-3611
Rod Coffman	
Fire Department:	
Carlsbad	(575) 885-3125
Artesia	(575) 746-5050
Hospitals:	
Carlsbad	(575) 887-4121
Artesia	(575) 748-3333
Hobbs	(575) 392-1979
Dept. of Public Safety/Carlsbad	(575) 748-9718
Highway Department	(575) 885-3281
New Mexico Oil Conservation	(575) 476-3440
U.S. Dept. of Labor	(575) 887-1174

EOG Resources, Inc.

EOG / Midland	Office (432) 686-3600
---------------	-----------------------

Company Drilling Consultants:

Danny Kiser Will Henderson	Cell (432) 894-3417
Larry King	

Drilling Engineer

Steve Munsell	Office (432) 686-3609
	Cell (432) 894-1256

Operations Manager

Travis Lain	Office (432) 686-3740
	Cell (432) 254-3521

Drilling Superintendents

Ron Welch	Office (432) 686-3695
	Cell (432) 386-0592
Barney Thompson	Office (432) 686-3678
	Cell (432) 254-9056

Cactus Drilling

Cactus Drilling	Office (580) 799-2752
Cactus 123 Drilling Rig	Rig (432) 894-3417

Tool Pusher:

Jack Herndon	Cell (405) 519-6552
Larry Slife	Cell (405) 250-6368

Safety

James Fischer (HSE Manager)	Office (432) 686-3747
	Cell (817) 253-3725
Brian Chandler	Cell (806) 777-8814
Terry Maxwell (Consultant)	Cell (432) 349-6926