

DISTRICT I
1625 N. French Dr., Hobbs, NM 88240
Phone (575) 393-8161 Fax: (575) 393-0720

DISTRICT II
811 S. First St., Artesia, NM 88210
Phone (575) 746-1253 Fax: (575) 746-0720

DISTRICT III
1000 Rio Brazos Rd., Aztec, NM 87410
Phone (505) 334-8178 Fax: (505) 334-8170

DISTRICT IV
1220 S. St. Francis Dr., Santa Fe, NM 87505
Phone (505) 476-3460 Fax: (505) 476-3462

HOBBS OCD

JAN 23 2013

RECEIVED

State of New Mexico
Energy, Minerals and Natural Resources Department

OIL CONSERVATION DIVISION

1220 South St. Francis Dr.
Santa Fe, New Mexico 87505

Form C-102
Revised August 1, 2011

Submit one copy to appropriate
District Office

WELL LOCATION AND ACREAGE DEDICATION PLAT

☐ AMENDED REPORT

API Number 30-025-40824	Pool Code 22900	Pool Name EWICE; B-T-D, NORTH
Property Code 22503	Property Name NORTHEAST DRINKARD UNIT	Well Number 267
OGRID No. 873	Operator Name APACHE CORPORATION	Elevation 3428'

Surface Location

UL or lot No. M	Section 3	Township 21 S	Range 37 E	Lot Idn 13	Feet from the 2890	North/South line SOUTH	Feet from the 920	East/West line WEST	County LEA
---------------------------	---------------------	-------------------------	----------------------	----------------------	------------------------------	----------------------------------	-----------------------------	-------------------------------	----------------------

Bottom Hole Location If Different From Surface

UL or lot No. T	Section 3	Township 21 S	Range 37 E	Lot Idn 2590	Feet from the 2590	North/South line SOUTH	Feet from the 861	East/West line WEST	County LEA
---------------------------	---------------------	-------------------------	----------------------	------------------------	------------------------------	----------------------------------	-----------------------------	-------------------------------	----------------------

Dedicated Acres 80	Joint or Infill	Consolidation Code	Order No.
------------------------------	-----------------	--------------------	-----------

NO ALLOWABLE WILL BE ASSIGNED TO THIS COMPLETION UNTIL ALL INTERESTS HAVE BEEN CONSOLIDATED
OR A NON-STANDARD UNIT HAS BEEN APPROVED BY THE DIVISION

SURFACE LOCATION

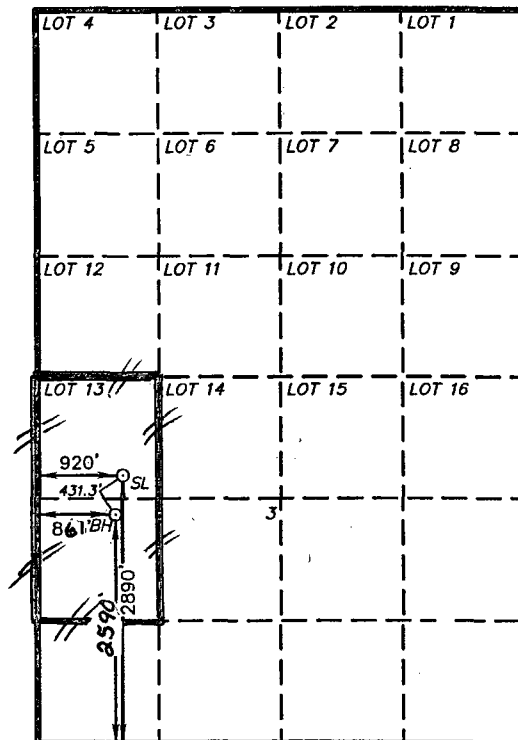
Lat - N 32°30'31.14"
Long - W 103°09'23.40"
NMSPC- N 550780.346
E 904124.552
(NAD-83)

Lat - N 32°30'30.71"
Long - W 103°09'21.70"
NMSPC- N 550720.307
E 862940.719
(NAD-27)

PROPOSED BOTTOM
HOLE LOCATION

Lat - N 32°30'26.94"
Long - W 103°09'24.27"
NMSPC- N 550354.757
E 904054.518
(NAD-83)

Lat - N 32°30'26.51"
Long - W 103°09'22.57"
NMSPC- N 550294.711
E 862870.662
(NAD-27)



OPERATOR CERTIFICATION

I hereby certify that the information contained herein is true and complete to the best of my knowledge and belief, and that this organization either owns a working interest or unleased mineral interest in the land including the proposed bottom hole location or has a right to drill this well at this location pursuant to a contract with an owner of such a mineral or working interest, or to a voluntary pooling agreement or a compulsory pooling order heretofore entered by the division.

Reesa Holland 1/17/13
Signature Date

REESEA HOLLAND
Printed Name

Reesa.Holland@apachecorp.com
Email Address

SURVEYOR CERTIFICATION

I hereby certify that the well location shown on this plat was plotted from field notes of actual surveys made by me or under my supervision, and that the same is true and correct to the best of my belief.

SEPTEMBER 11 2012

Date Surveyed
Signature [Signature]
Professional Surveyor

No. 2

Certificate No. Gary L. Jones 7977

BASIN SURVEYS 27325

FEB 05 2013