

DISTRICT I
1825 N. French Dr., Hobbs, NM 88240

DISTRICT II
1301 W. Grand Avenue, Artesia, NM 88210

DISTRICT III
1000 Rio Brazos Rd., Aztec, NM 87410

DISTRICT IV
1220 S. St. Francis Dr., Santa Fe, NM 87505

HOBBS OCD

JAN 28 2013

State of New Mexico
Energy, Minerals and Natural Resources Department

Form C-102
Revised July 18, 2010

Submit one copy to appropriate
District Office

OIL CONSERVATION DIVISION
1220 South St. Francis Dr.
Santa Fe, New Mexico 87505

RECEIVED

☐ AMENDED REPORT

WELL LOCATION AND ACREAGE DEDICATION PLAT

| | | |
|----------------------------|---|-----------------------------------|
| API Number 30-025-40025 | Pool Code 44500 | Pool Name Maljamar; Yeso, West |
| Property Code 38206 | Property Name JG STATE | Well Number 13 |
| OGRID No. 162683 | Operator Name CIMAREX ENERGY CO. OF COLORADO | Elevation 4029' |

Surface Location

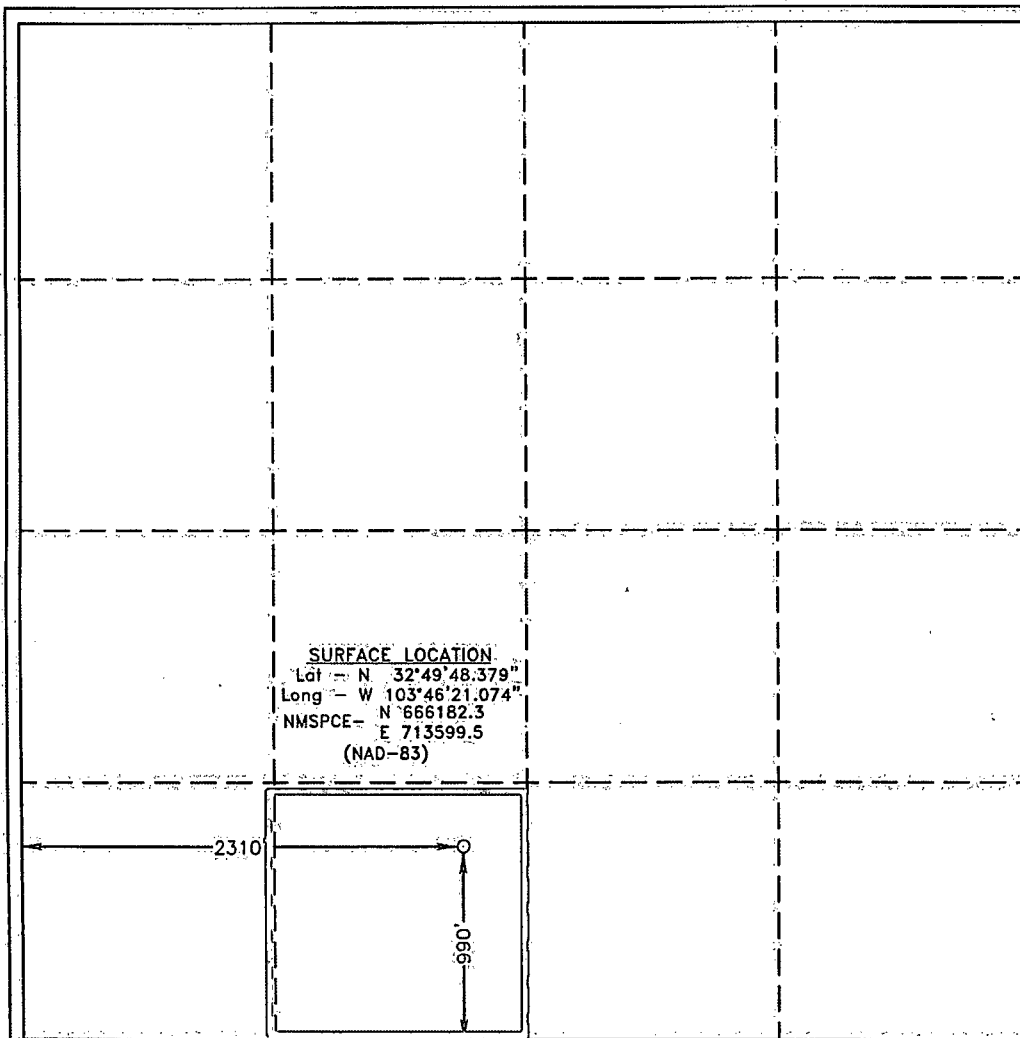
| | | | | | | | | | |
|--------------------|---------------|------------------|---------------|---------|----------------------|---------------------------|-----------------------|------------------------|---------------|
| UL or lot No. N | Section 16 | Township 17 S | Range 32 E | Lot Idn | Feet from the 990 | North/South line SOUTH | Feet from the 2310 | East/West line WEST | County LEA |
|--------------------|---------------|------------------|---------------|---------|----------------------|---------------------------|-----------------------|------------------------|---------------|

Bottom Hole Location If Different From Surface

| | | | | | | | | | |
|---------------|---------|----------|-------|---------|---------------|------------------|---------------|----------------|--------|
| UL or lot No. | Section | Township | Range | Lot Idn | Feet from the | North/South line | Feet from the | East/West line | County |
|---------------|---------|----------|-------|---------|---------------|------------------|---------------|----------------|--------|

| | | | |
|-------------------------|-----------------|--------------------|-----------|
| Dedicated Acres 40.0 | Joint or Infill | Consolidation Code | Order No. |
|-------------------------|-----------------|--------------------|-----------|

NO ALLOWABLE WILL BE ASSIGNED TO THIS COMPLETION UNTIL ALL INTERESTS HAVE BEEN CONSOLIDATED
OR A NON-STANDARD UNIT HAS BEEN APPROVED BY THE DIVISION



OPERATOR CERTIFICATION

I hereby certify that the information contained herein is true and complete to the best of my knowledge and belief, and that this organization either owns a working interest or unleased mineral interest in the land including the proposed bottom hole location or has a right to drill this well at this location pursuant to a contract with an owner of such a mineral or working interest, or to a voluntary pooling agreement, or a compulsory pooling order heretofore entered by the division.

Michelle Chappell 01/25/2013
Signature Date

Michelle Chappell
Printed Name
mchappell@cimarex.com
Email Address

SURVEYOR CERTIFICATION

I hereby certify that the well location shown on this plat was plotted from field notes of actual surveys made by me or under my supervision and that the same is true and correct to the best of my belief.

DATE SURVEYED: OCTOBER 12, 2010
Signature & Seal of Professional Surveyor
GARY L. JONES
Professional Surveyor No. 10023479

Certificate No. Gary L. Jones 7977

Basin Surveys 23479