

DISTRICT I
1625 N. French Dr., Hobbs, NM 88240
Phone: (575) 393-6161 Fax: (575) 393-0720

DISTRICT II
811 S. First St., Artesia, NM 88210
Phone: (575) 748-1283 Fax: (575) 748-9720

DISTRICT III
1000 Rio Brazos Road, Aztec, NM 87410
Phone: (505) 334-6178 Fax: (505) 334-6177

DISTRICT IV
1220 S. St. Francis Dr., Santa Fe, NM 87505
Phone: (505) 476-3460 Fax: (505) 476-3462

State of New Mexico
Energy, Minerals & Natural Resources Department
HOBBS OGD
OIL CONSERVATION DIVISION
1220 South St. Francis Dr.
Santa Fe, New Mexico 87505

Form C-102
Revised August 1, 2011
Submit one copy to appropriate
District Office

FEB 14 2013

☐ AMENDED REPORT

RECEIVED LOCATION AND ACREAGE DEDICATION PLAT

API Number 30-025-40997	Pool Code 62180	Pool Name VACUUM; GRAYBURG SAN ANDRES
Property Code 29923	Property Name CENTRAL VACUUM Unit	Well Number 437
OGRID No. 4323	Operator Name CHEVRON USA INC.	Elevation 4004'

Surface Location

UL or lot No.	Section	Township	Range	Lot Idn	Feet from the	North/South line	Feet from the	East/West line	County
N	25	17-S	34-E		570	SOUTH	2180	WEST	LEA

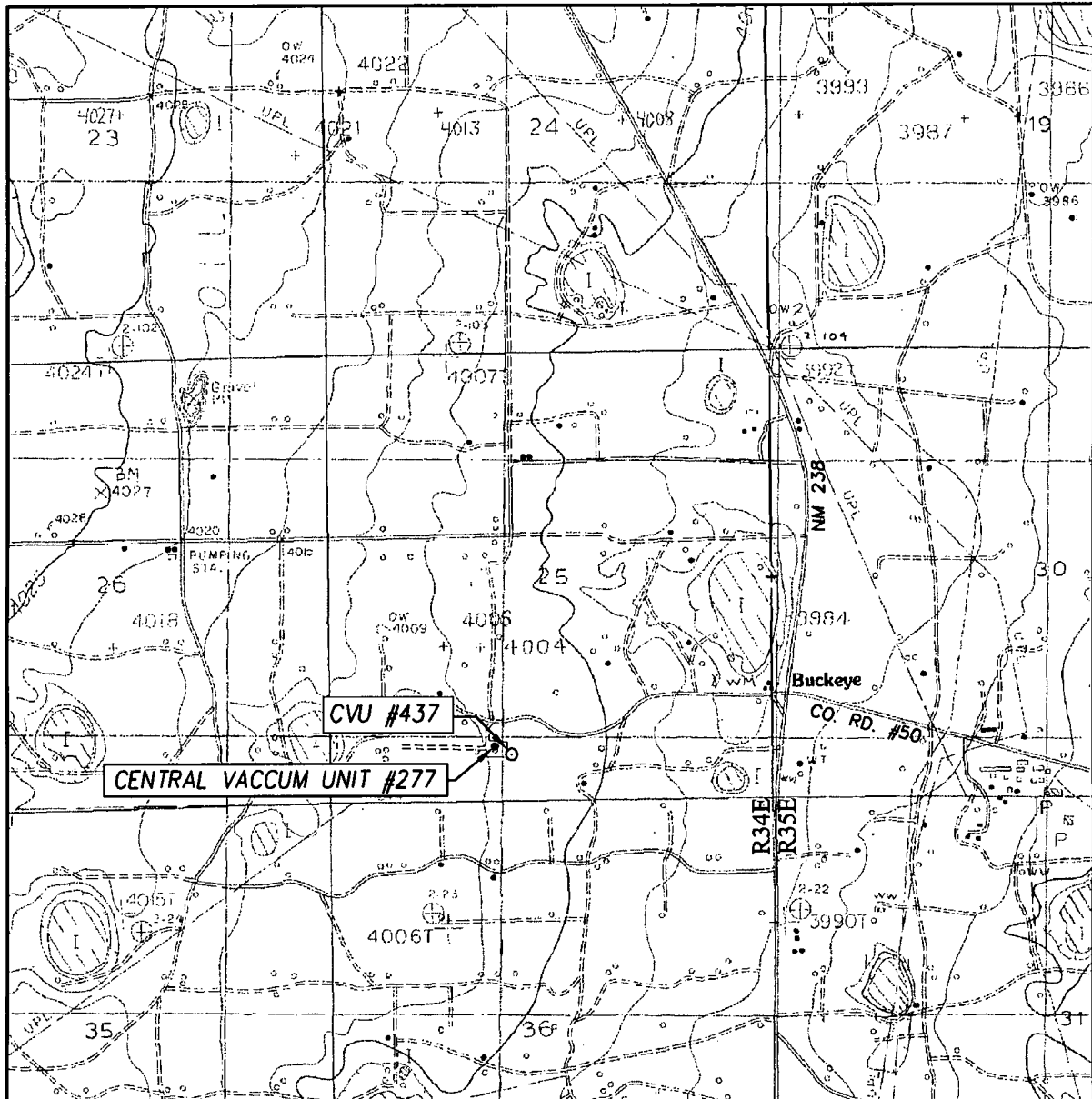
Bottom Hole Location If Different From Surface

UL or lot No.	Section	Township	Range	Lot Idn	Feet from the	North/South line	Feet from the	East/West line	County
N	25	17S	34E		660	SOUTH	2600	WEST	LEA
Dedicated Acres 40	Joint or Infill	Consolidation Code	Order No.						

NO ALLOWABLE WILL BE ASSIGNED TO THIS COMPLETION UNTIL ALL INTERESTS HAVE BEEN CONSOLIDATED OR A NON-STANDARD UNIT HAS BEEN APPROVED BY THE DIVISION

<p>GEODETIC COORDINATES NAD 27 NME</p> <p>SURFACE LOCATION Y=655800.1 N X=751451.3 E</p> <p>LAT.=32.800210° N LONG.=103.515011° W</p>	<p>OPERATOR CERTIFICATION</p> <p>I hereby certify that the information herein is true and complete to the best of my knowledge and belief, and that this organization either owns a working interest or unleased mineral interest in the land including the proposed bottom hole location or has a right to drill this well at this location pursuant to a contract with an owner of such mineral or working interest, or to a voluntary pooling agreement or a compulsory pooling order heretofore entered by the division.</p> <p>Denise Pinkerton 2/1/2013 Signature Date</p> <p>Denise Pinkerton Printed Name</p> <p>Leakejd@chevron.com E-mail Address</p>
	<p>SURVEYOR CERTIFICATION</p> <p>I hereby certify that the well location shown on this plat was plotted from field notes of actual surveys made by me or under my supervision, and that the same is true and correct to the best of my belief.</p> <p>OCTOBER 23, 2012 Date of Survey</p> <p>Signature & Seal of Professional Surveyor:</p> <p>RONALD J. EIDSON NEW MEXICO 3239 10/30/2012 Certificate Number Gary C. Eidson 12641 Ronald J. Eidson 3239 AF WSC W.O.: 12.11.1704</p>

LOCATION VERIFICATION MAP



SCALE: 1" = 2000'

CONTOUR INTERVAL:
BUCKEYE, N.M. - 5'
LOVINGTON SW, N.M. - 5'

SEC. 25 TWP. 17-S RGE. 34-E

SURVEY _____ N.M.P.M.

COUNTY LEA STATE NEW MEXICO

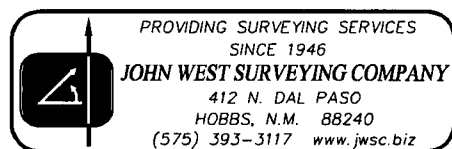
DESCRIPTION 570' FSL & 2180' FWL

ELEVATION 4004'

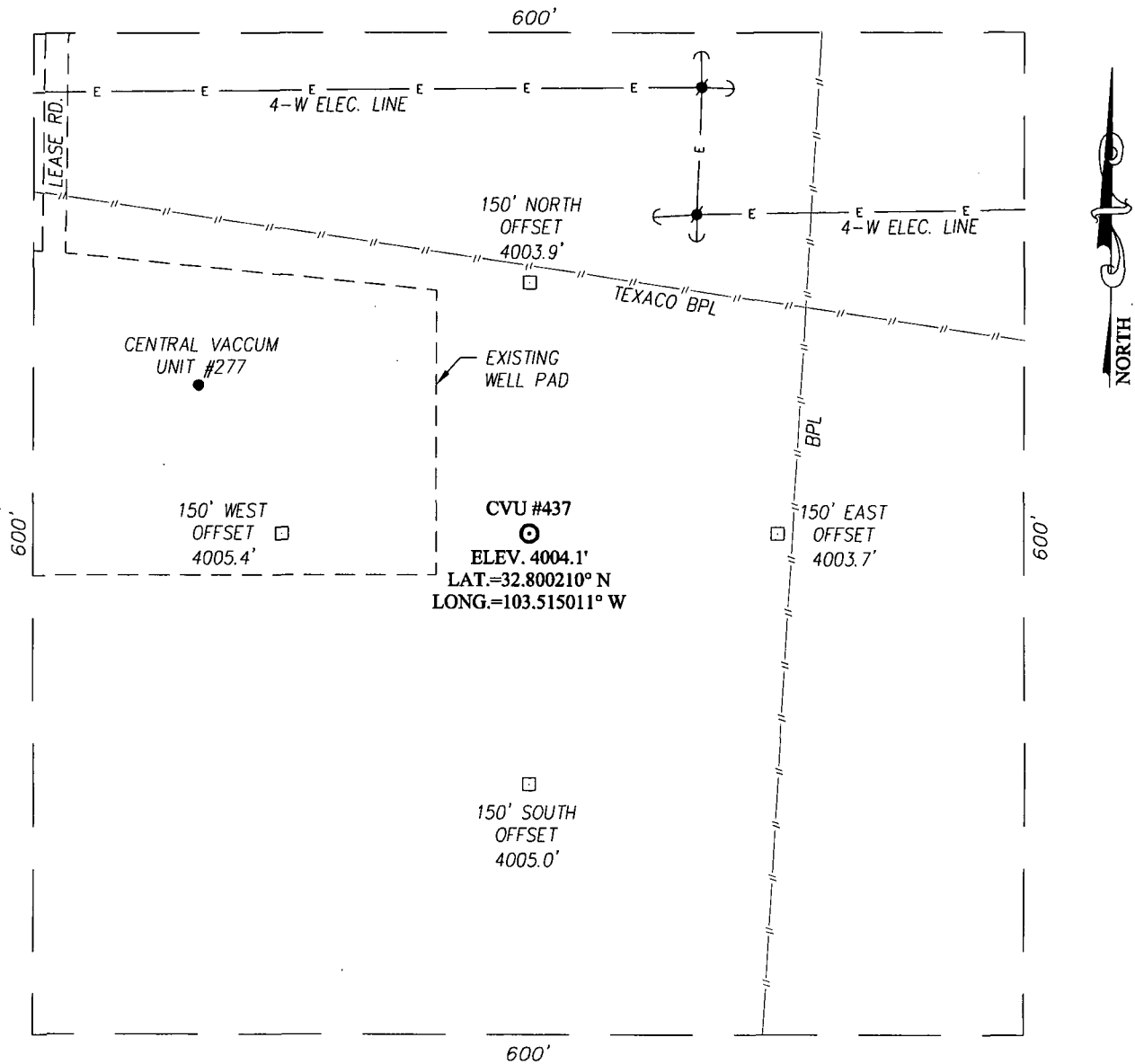
OPERATOR CHEVRON USA INC.

LEASE CVU

U.S.G.S. TOPOGRAPHIC MAP
BUCKEYE, N.M.

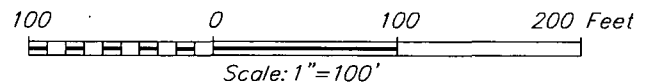


SECTION 25, TOWNSHIP 17 SOUTH, RANGE 34 EAST, N.M.P.M.
LEA COUNTY, NEW MEXICO



DIRECTIONS TO LOCATION

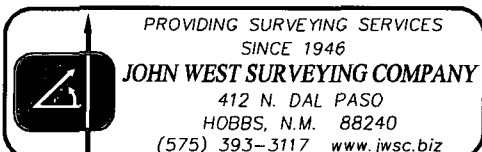
FROM THE INTERSECTION OF ST. HWY. #238 AND CO. RD. #50 (BUCKEYE) GO WEST ON LEASE ROAD SOUTH OF THE BUCKEYE STORE. FOLLOW LEASE ROAD SOUTHWEST APPROX. 0.7 MILES. TURN LEFT AND GO SOUTH APPROX. 300 FEET TO THE CVU #277 LOCATION. THE LOCATION STAKE IS 209 FEET SOUTHEAST OF THE #277 WELL HEAD.



CHEVRON USA INC.

CVU #437 WELL
LOCATED 570 FEET FROM THE SOUTH LINE
AND 2180 FEET FROM THE WEST LINE OF SECTION 25,
TOWNSHIP 17 SOUTH, RANGE 34 EAST, N.M.P.M.,
LEA COUNTY, NEW MEXICO

Survey Date: 10/23/12	CAD Date: 10/29/12	Drawn By: AF
W.O. No.: 12111704	Rev: .	Rel. W.O.: Sheet 1 of 1



VICINITY MAP



SCALE: 1" = 2 MILES

SEC. 25 TWP. 17-S RGE. 34-E

SURVEY _____ N.M.P.M.

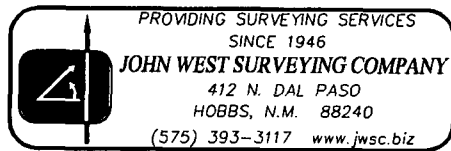
COUNTY LEA STATE NEW MEXICO

DESCRIPTION 570' FSL & 2180' FWL

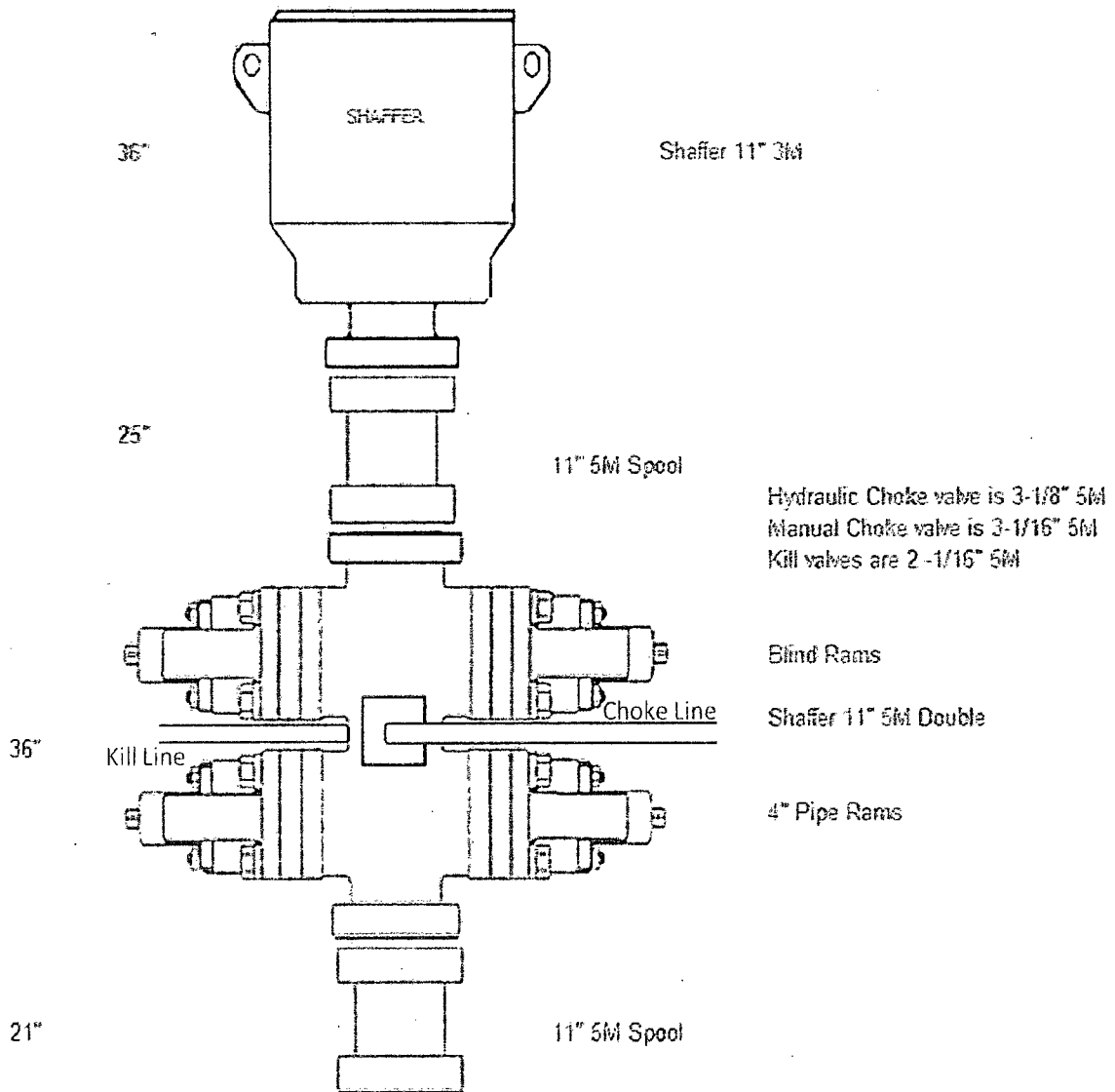
ELEVATION 4004'

OPERATOR CHEVRON USA INC.

LEASE _____ CVU _____



H&P 356 Bop Schematic



Choke Manifold Diagram

