

HOBBS OCD

FEB 13 2013

DISTRICT I
1625 N. French Dr., Hobbs, NM 88240
Phone (575) 393-8161 Fax: (575) 393-0720

DISTRICT II
811 S. First St., Artesia, NM 88210
Phone (575) 749-1233 Fax: (575) 745-9720

DISTRICT III
1000 Rio Brazos Rd., Aztec, NM 87410
Phone (505) 334-6178 Fax: (505) 334-6170

DISTRICT IV
1220 S. St. Francis Dr., Santa Fe, NM 87505
Phone (505) 476-3460 Fax: (505) 476-3462

State of New Mexico
Energy, Minerals and Natural Resources Department

Form C-102
Revised August 1, 2011

Submit one copy to appropriate
District Office

RECEIVED

OIL CONSERVATION DIVISION
1220 South St. Francis Dr.
Santa Fe, New Mexico 87505

☒ AMENDED REPORT

WELL LOCATION AND ACREAGE DEDICATION PLAT

API Number 30-025-40501		Pool Code 97838	Pool Name JENNINGS UPPER BONE SPRING SHALE
Property Code 39134	Property Name WILDER FEDERAL 28		Well Number 3H
OGRID No. 217817	Operator Name CONOCO PHILLIPS		Elevation '3168'

Surface Location

UL or lot No.	Section	Township	Range	Lot Idn	Feet from the	North/South line	Feet from the	East/West line	County
C	28	26 S	32 E		224	NORTH	1544	WEST	LEA

Bottom Hole Location If Different From Surface

UL or lot No.	Section	Township	Range	Lot Idn	Feet from the	North/South line	Feet from the	East/West line	County
LOT 3	33	26 S	32 E		355	SOUTH	1714	WEST	LEA

Dedicated Acres 230.09	Joint or Infill	Consolidation Code	Order No.
---------------------------	-----------------	--------------------	-----------

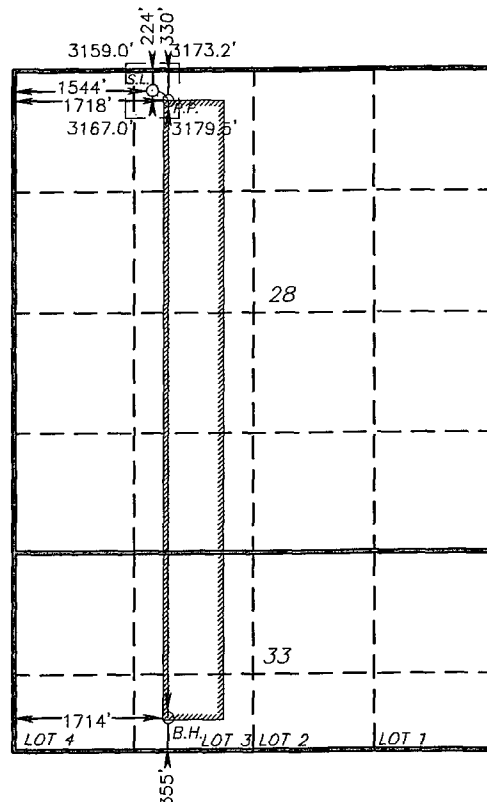
NO ALLOWABLE WILL BE ASSIGNED TO THIS COMPLETION UNTIL ALL INTERESTS HAVE BEEN CONSOLIDATED
OR A NON-STANDARD UNIT HAS BEEN APPROVED BY THE DIVISION

SURFACE LOCATION

Lat - N 32°01'12.89"
Long - W 103°41'01.06"
NMSPCE- N 371709.771
E 742695.894
(NAD-83)
Lat - N 32°01'12.43"
Long - W 103°40'59.37"
NMSPCE- N 371652.7
E 701508.6
(NAD-27)

PROPOSED BOTTOM
HOLE LOCATION

Lat - N 32°00'04.33"
Long - W 103°40'59.05"
NMSPCE- N 364783.8
E 742910.7
(NAD-83)
Lat - N 32°00'03.88"
Long - W 103°40'57.36"
NMSPCE- N 364726.9
E 701723.1
(NAD-27)



1" = 2000

OPERATOR CERTIFICATION

I hereby certify that the information contained herein is true and complete to the best of my knowledge and belief, and that this organization either owns a working interest or unleased mineral interest in the land including the proposed bottom hole location or has a right to drill this well at this location pursuant to a contract with an owner of such a mineral or working interest, or to a voluntary pooling agreement or a compulsory pooling order heretofore entered by the division.

Signature _____ Date _____

Sonja Williams

Printed Name

Sonja S. Williams

Email Address

sonja@phillips.com

SURVEYOR CERTIFICATION

I hereby certify that the well location shown on this plat was plotted from field notes of actual surveys made by me or under my supervision, and that the same is true and correct to the best of my belief.

Date Surveyed _____

Signature _____

Professional Surveyor

7977

Certificate No. Gary L. Jones 7977

Basin Surveys 27890

Basin Surveys 27890

Basin Surveys 27890

Basin Surveys 27890

Basin Surveys 27890

Basin Surveys 27890

Basin Surveys 27890

Basin Surveys 27890

* Amended

FEB 25 2013