

HOBBS OCD

Surface Use Plan of Operations

FEB 21 2013

CONOCOPHILLIPS COMPANY

Ruby Federal # 59

330' FSL & 1850' FWL of Section 18-17S-32E

Federal Lease No. NM LC029405B

Lea County, New Mexico

RECEIVED

This location was finalized during an onsite visit conducted in 2011 with BLM representatives.

1. Access Road - Existing

- A. From the junction of Highway 82 and Maljamar – About 3.0 miles south of Maljamar. Go south 0.6 miles on lease road, turn west for 1.4 miles. Go south 0.8 miles. Turn west 1.2 miles to proposed new road and well location.
- B. Proposed route to location - **See enclosed county map & vicinity map.**
- C. The existing road will be maintained, including Dust Suppression, in the same or better condition as existed prior to the commencement of operations and said maintenance will continue until final abandonment and reclamation of this drilling location.

2. Planned Access Roads

- A. Approximately 300' of new access road is needed. The access point is on the location's north side. A 50' construction right of way will be needed and a minimum travel way width of 14'. All access road is on federal surface.

3. Location of Existing Wells within a One-Mile Radius.

- A. There are no water wells within a one-mile radius
- B. There is one dry hole located within a one-mile radius.
- C. There are no plugged and abandoned wells within a one-mile radius.
- D. There are no saltwater disposal wells within a one-mile radius.
- E. There are at least 4 proposed drill wells within a one-mile radius.
- F. There are at least 9 producing/recently drilled wells within a one-mile radius.
- G. There are no shut-in wells within a one-mile radius.
- H. There are no injection wells within a one-mile radius.
- I. There are no monitoring or observation wells within a one-mile radius.
- J. There is no water source well within a one-mile radius.

4. Location of existing and/or Proposed Facilities

A. Existing Central Tank Battery

- 1. Produced fluid will utilize a flow line to Ruby Facility #1. The enclosed **Facility Map** shows a maximum of approximately 5,700' of above ground new flow line following the existing lease access road, to the existing Ruby Facility #1 located in the SW Qtr of the SW Qtr (Unit M) of Section 17, T17S, R32E. About 600' of above ground new power line will be placed, heading north then due east, on the surface to connect to existing power source. A second facility, Ruby Facility #2, is being planned. Flow line from Ruby Federal #59 will likely tie into that facility when permitting and construction are completed.
- 2. All above ground existing facilities are painted an earth tone color that blends with the surrounding area. Any proposed new facilities, not including flow and power lines, will be painted Shale Green.

B. Proposed Well Pad

1. A well pad will be constructed to accommodate the new well and associated production equipment. Planned dimensions are 260 feet by 260 feet of working surface. Our intent is to perform interim reclamation to reduce the pad footprint following initial development phase. Interim reclamation will be done as shown on the enclosed map titled "Interim Reclamation".
2. Topsoil will be stored to the south in a manner that avoids sand dunes to the southeast of the location.
3. This well will be placed on oil production. The production equipment will include but not limited to oil and water tanks.

5. Location and Type of Water Supply

- A. Fresh water will be obtained from an approved source.
- B. No water well will be drilled on this location.

6. Source of Construction Materials

- A. Any materials needed in addition to what can be used from location and access road will be hauled in from a supplier having a permitted source of materials.
- B. If production is established, any additional construction materials required for the surfacing of the access road and for installation of the production facilities will be purchased from a supplier having a permitted source of materials.
- C. No construction materials will be taken from Federal lands without a prior approval from the appropriate Surface Management Agency.

7. Methods for Handling Waste Disposal

- A. Hazardous substances as listed as hazardous under the Comprehensive Environmental Response, Compensation, and Liability Act (CERCLA) of 1980, as amended, 42 U.S.C. 9601 et seq. and the regulations issued under CERCLA, will be disposed of in the appropriate pit.
- C. Any spills of oil or any other potentially hazardous material will be cleaned up and removed immediately to an approved disposal site.
- D. Sewage will be disposed of according to county and state requirements in a portable chemical toilet(s) or in a hole at least 20 feet deep excavated in the cut portion of the well pad. Other waste and chemicals may not be disposed of on location. Waste will not be burned on location.
- E. Garbage and trash will be contained in portable trash cages. The contents of the trash cages will be disposed of according to county and state regulations at an approved facility. Disposal of it or burning it will not be allowed on the well location.
- F. After drilling rig has moved out of area, any scattered trash and litter will be removed from site.
- G. All potentially hazardous areas will be fenced and will remain in this condition until entire area can be rehabilitated.

8. Ancillary Facilities

The production facilities are discussed under Item 4.

9. Well Site Layout

- A. **See Enclosed Well Location Plat.**
- B. Well Site Layout – **See Enclosed Well Pad Detail.**

- C. Topsoil will be stripped from the location and access roads to be stockpiled, on the west side of the new location, and deposited apart from other excavated material.
- D. There will be no reserve pit on location. This well will be drilled via a closed loop system and the contents will be taken to an approved disposal site.

10. Plans for Reclamation of the Surface

- A. If this well is a producer, all site rehabilitation shall be completed within six months. Under normal weather conditions, the timetable for rehab will allow two months for backfill settling and two months to complete final re-contouring, and top-soiling. In the event of winter freeze-up, reclamation will be put on hold as determined by the BLM.
- B. At such time as the well is abandoned, ConocoPhillips Company will contact the BLM for development of the final rehabilitation plan. Upon abandonment, an erect dry hole marker welded to surface casing four feet below ground level will be installed. It will contain the same information as the well sign as directed by 43 CFR 3162.6 (30 CFR 221.22). The dry hole marker sealing the casing will have an 1/8" to 1/4" weep hole which will allow pressure to dissipate and make detection of any fluid seepage easier.
- C. If this well site is constructed and not drilled, the site and access road will be reclaimed or BLM approved special erosion control measures implemented within 90 days of site construction unless otherwise approved in writing by sundry notice.
- D. The unused portion of the site will be ripped prior to replacing the topsoil. The soil-banked material will be spread over the area. Reseeding will be an approved mixture by the BLM. If the broadcast method is utilized, the seed mixture shall be doubled. There shall be no primary or secondary noxious weed seed in the native seed mixture.
- E. The entire disturbed location shall be fenced after seeding. When the location has been rehabilitated and vegetation re-established, the fence shall be removed or the fenced area reduced as required by the landowner or BLM.
- F. Weeds will be controlled on disturbed areas within the exterior limits of the well pad. The control methods will be in accordance with guidelines established by EPA, BLM, state, and local authorities.
- G. A pre-work onsite with the BLM and ConocoPhillips Company may be held for all phases of reclamation.

11. Surface Ownership
Bureau of Land Management
620 E. Greene Street
Carlsbad, NM 88220-6292

12. Other Information

- A. The area that would be impacted by the well site and access road has been surveyed for cultural resources. A copy of that report is enclosed.
- B. ConocoPhillips Company will be responsible for informing all persons in the area who are associated with this project that they will be subject to prosecution for knowingly disturbing historic or archaeological sites or for collecting artifacts. If historic or archaeological materials are uncovered, ConocoPhillips Company will suspend all operations that might further disturb such materials and immediately contact the Authorized Officer, Bureau of Land Management.

Within five (5) working days the Authorized Officer will inform ConocoPhillips Company as to whether the materials appear eligible for the National Register of Historic Places; the mitigation measures the operator will likely have to undertake before the site can be used (assuming in site preservation is not necessary); and a time frame for the Authorized

Officer to complete an expedited review under 36 CFR 800.11 to confirm, through the State Historic Preservation Officer, that the findings of the Authorized Officer are correct and that mitigation is appropriate.

- C. ConocoPhillips Company will protect, in place, all public land survey monuments, private property corner, and Forest service boundary markers. In the event that any such land markers or monuments are destroyed in the exercise of their rights, depending on the type of monument destroyed, the operator shall see that they are reestablished or referenced in accordance with (1) the procedures outlined in the "Manual of Instructions for the Survey of the Public Land of the United States", (2) the specifications of the county surveyor, or (3) the specification of the BLM.
- D. ConocoPhillips Company will comply with additional Conditions of Approval provided by BLM.

Operator Certification

ConocoPhillips

Certification:

- I hereby certify that I, or persons under my direct supervision, have inspected the proposed drill site and access rout; that I am familiar with the conditions which presently exist; that the statements made in this APD package are, to the best of my knowledge, true and correct; and that the work associated with the operations proposed herein will be performed by ConocoPhillips Company and its contractors and subcontractors in conformity with this plan and the terms and conditions under which it is approved. I also certify responsibility for the operations conducted on that portion of the leased lands associated with this application with bond coverage provided by Nationwide Bond ES-0085. This statement is subject to the provisions of 18 U.S.C. 1001 for filing a false statement.

Susan B. Maunder

Susan B. Maunder
Senior Regulatory Specialist
PO Box 51810
Midland, TX 79710

Date: 11/16/12

Field Representative: (If not above signatory) Rudy Quiroz, Production Supervisor
Address: 1410 NW CR, Hobbs, NM 88240
575-391-3147

SECTION 18, TOWNSHIP 17 SOUTH, RANGE 32 EAST, N.M.P.M.

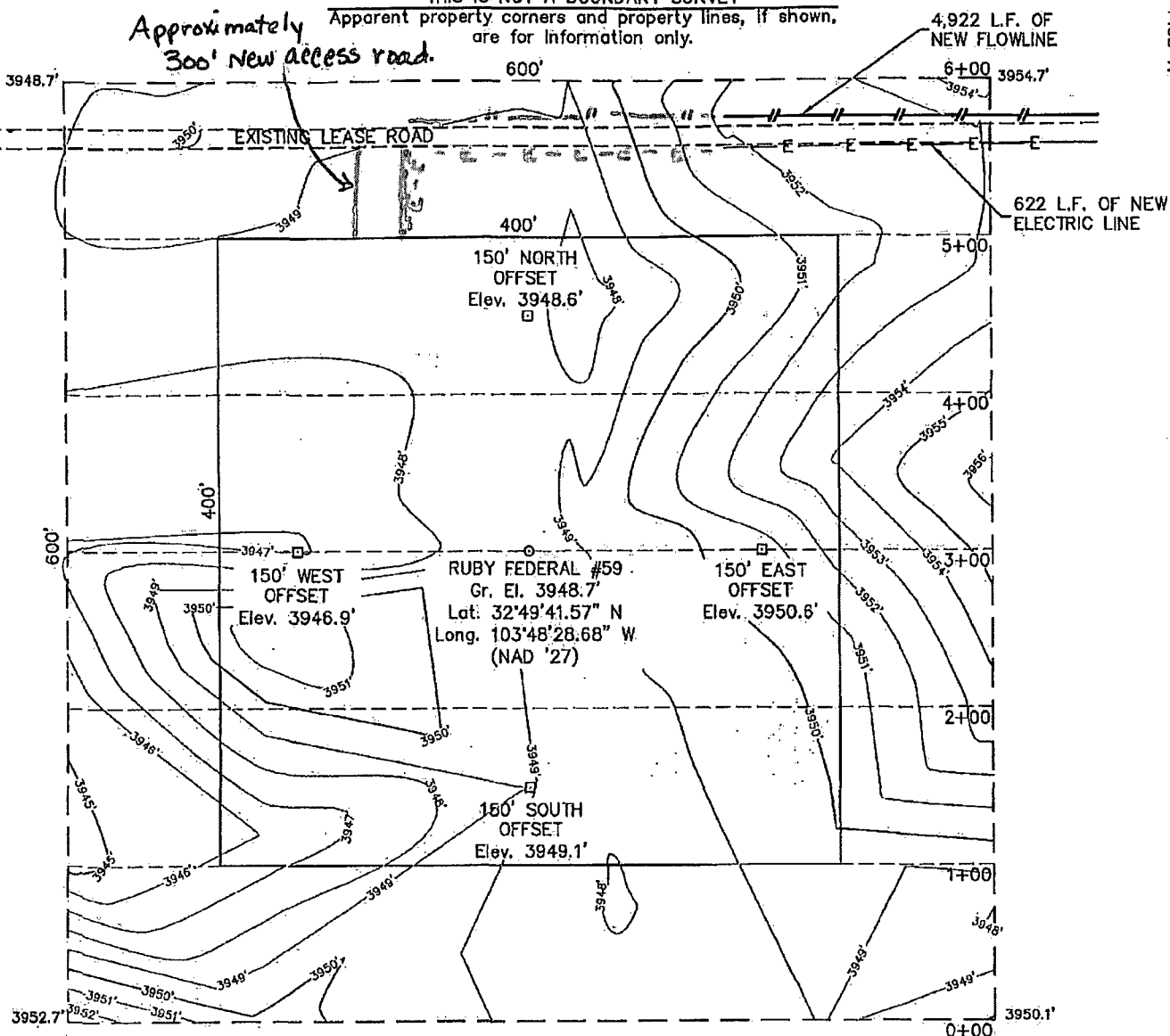
LEA COUNTY

NEW MEXICO

THIS IS NOT A BOUNDARY SURVEY

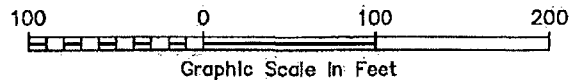
Apparent property corners and property lines, if shown, are for information only.

Approximately
300' new access road.



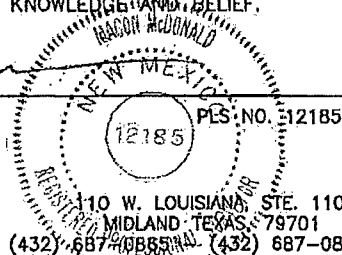
DRIVING DIRECTIONS

FROM THE INTERSECTION OF HIGHWAY 82 AND MALJAMAR ROAD. GO SOUTH 0.6 MILES ON MALJAMAR ROAD. TURN WEST ON LEASE ROAD AND GO 1.4 MILES TO INTERSECTION. TURN SOUTH AND GO 0.8 MILES TO INTERSECTION. TURN WEST AND GO 1.2 MILES. LOCATION IS APPROXIMATELY 300 FEET TO THE SOUTH.



I HEREBY CERTIFY THAT THIS PLAT WAS MADE FROM AN ACTUAL SURVEY MADE BY ME OR UNDER MY DIRECT SUPERVISION AND THAT THE SAME IS TRUE AND CORRECT TO THE BEST OF MY KNOWLEDGE AND BELIEF.

MACON McDONALD



110 W. LOUISIANA, STE. 110
MIDLAND, TEXAS 79701
(432) 687-0865 FAX (432) 687-0868 FAX

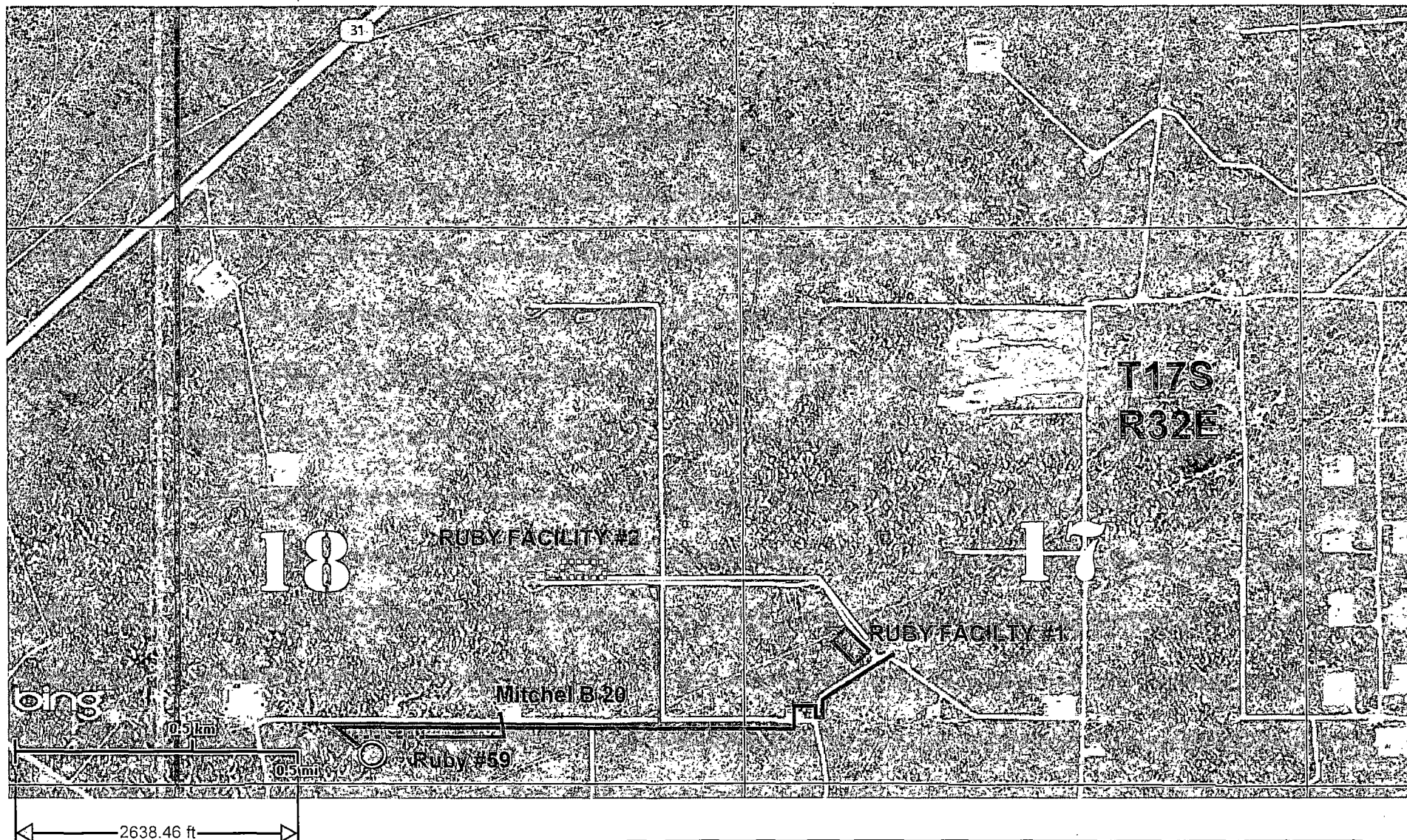
ConocoPhillips

Topographic Map

RUBY FEDERAL #59

Located 330' FSL & 1850' FWL, Section 18
Township 17 South, Range 32 East, N.M.P.M.
Lea County, New Mexico

Drawn By: JCC	Date: September 29, 2011
Scale: 1" = 100'	Field Book: 518 / 53 - 56
Sheet 1 of 3	Quadrangle: Maljamar
W.O. No: 2011-1403	Dwg. No.: L-2011-1403-A



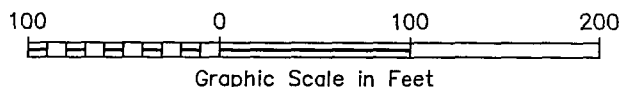
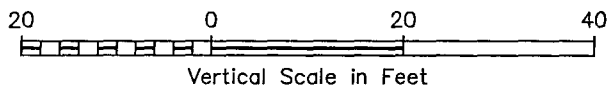
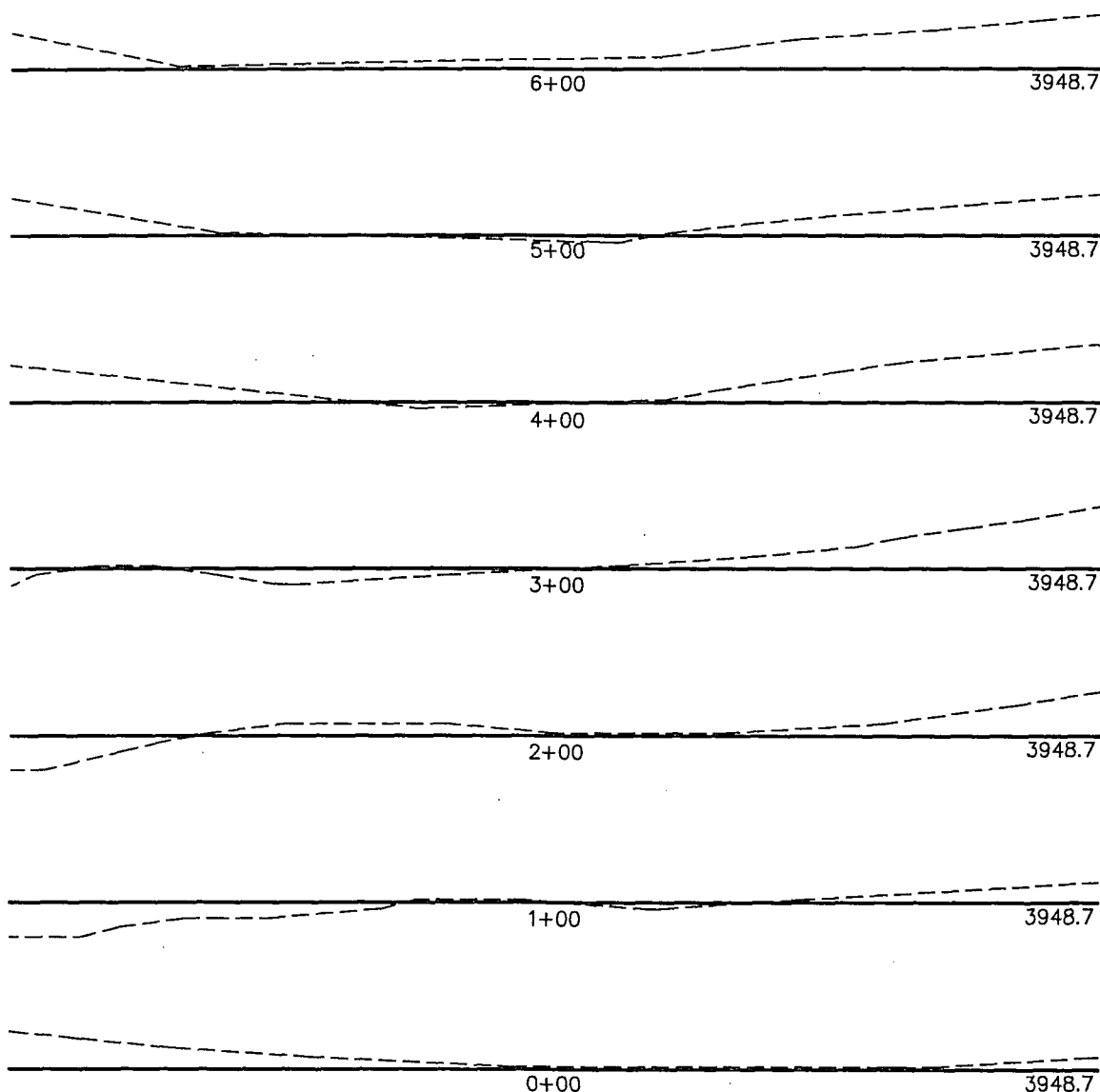
SECTION 18, TOWNSHIP 17 SOUTH, RANGE 32 EAST, N.M.P.M.

LEA COUNTY

NEW MEXICO

THIS IS NOT A BOUNDARY SURVEY
Apparent property corners and property lines, if shown,
are for information only.

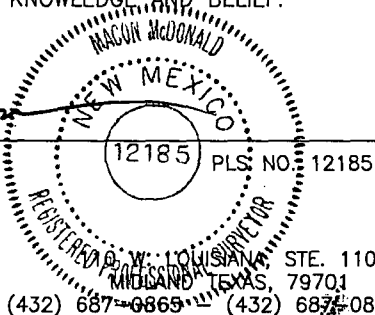
L-2011-1403-B



I HEREBY CERTIFY THAT THIS PLAT WAS MADE FROM AN ACTUAL SURVEY MADE BY ME OR UNDER MY DIRECT SUPERVISION AND THAT THE SAME IS TRUE AND CORRECT TO THE BEST OF MY KNOWLEDGE AND BELIEF.

[Signature]

MACON McDONALD



**WEST
COMPANY**
of Midland, Inc.

STE. 110
MIDLAND, TEXAS, 79701
(432) 687-0865 (432) 687-0868 FAX

ConocoPhillips

Topographic Map

RUBY FEDERAL #59

Located 330' FSL & 1850' FWL, Section 18
Township 17 South, Range 32 East, N.M.P.M.
Lea County, New Mexico

Drawn By: JCC	Date: September 29, 2011
Scale: 1" = 100'	Field Book: 518 / 53 - 56
Sheet 2 of 3	Quadrangle: Maljamar
W.O. No: 2011-1403	Dwg. No.: L-2011-1403-B

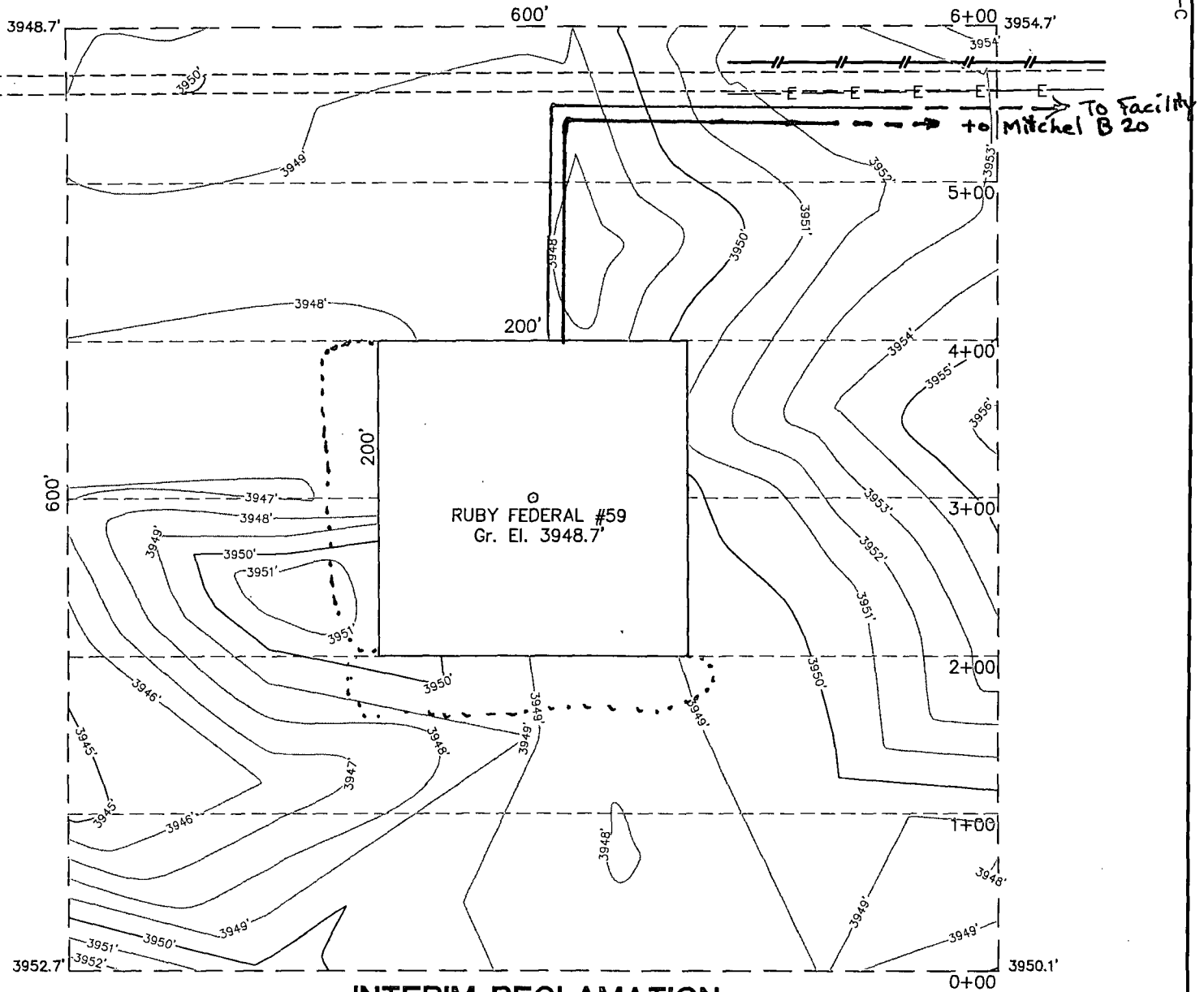
SECTION 18, TOWNSHIP 17 SOUTH, RANGE 32 EAST, N.M.P.M.

LEA COUNTY

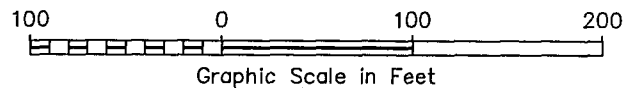
NEW MEXICO

THIS IS NOT A BOUNDARY SURVEY
Apparent property corners and property lines, if shown,
are for information only.

L-2011-1403-C



INTERIM RECLAMATION



ConocoPhillips

Topographic Map

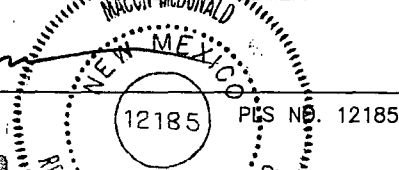
RUBY FEDERAL #59

Located 330' FSL & 1850' FWL, Section 18
Township 17 South, Range 32 East, N.M.P.M.
Lea County, New Mexico

I HEREBY CERTIFY THAT THIS PLAT WAS MADE FROM
AN ACTUAL SURVEY MADE BY ME OR UNDER MY DIRECT
SUPERVISION AND THAT THE SAME IS TRUE AND CORRECT
TO THE BEST OF MY KNOWLEDGE AND BELIEF.

Macon McDonald

MACON McDONALD

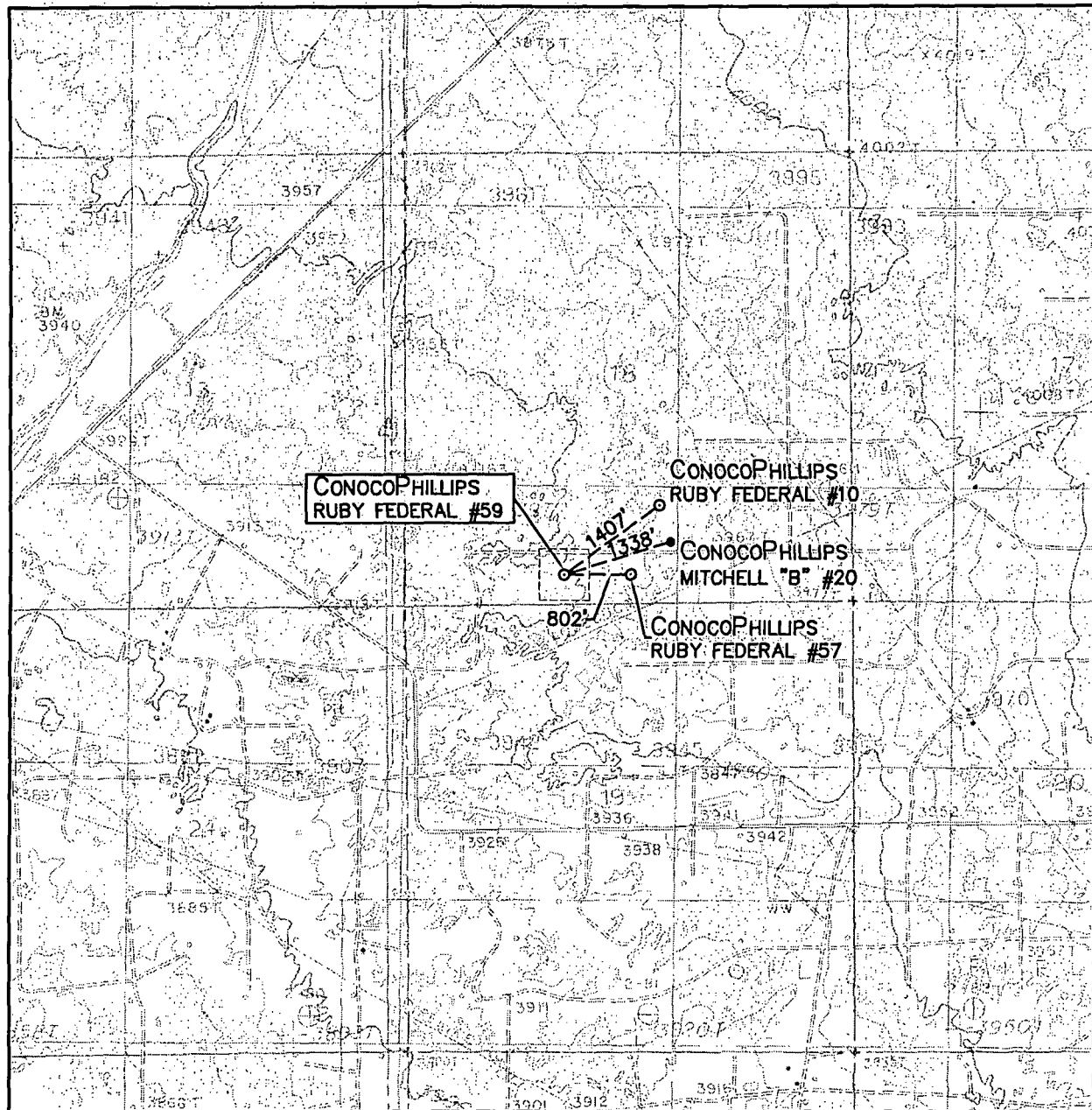


WEST
COMPANY
of Midland, Inc.

110 W. LOUISIANA, STE. 110
MIDLAND, TEXAS, 79701
(432) 687-0865 (432) 687-0868 FAX

Drawn By: JCC	Date: September 29, 2011
Scale: 1" = 100'	Field Book: 518 / 53 - 56
Sheet 3 of 3	Quadrangle: Maljamar
W.O. No: 2011-1403	Dwg. No.: L-2011-1403-C

LOCATION VERIFICATION MAP



SCALE: 1" = 2000'

CONTOUR INTERVAL:
MALJAMAR - 5'

SEC. 18 TWP. 17-S RGE. 32-E

SURVEY N.M.P.M.

COUNTY LEA

DESCRIPTION 330' FSL & 1850' FWL

ELEVATION 3949'

OPERATOR CONOCOPHILLIPS

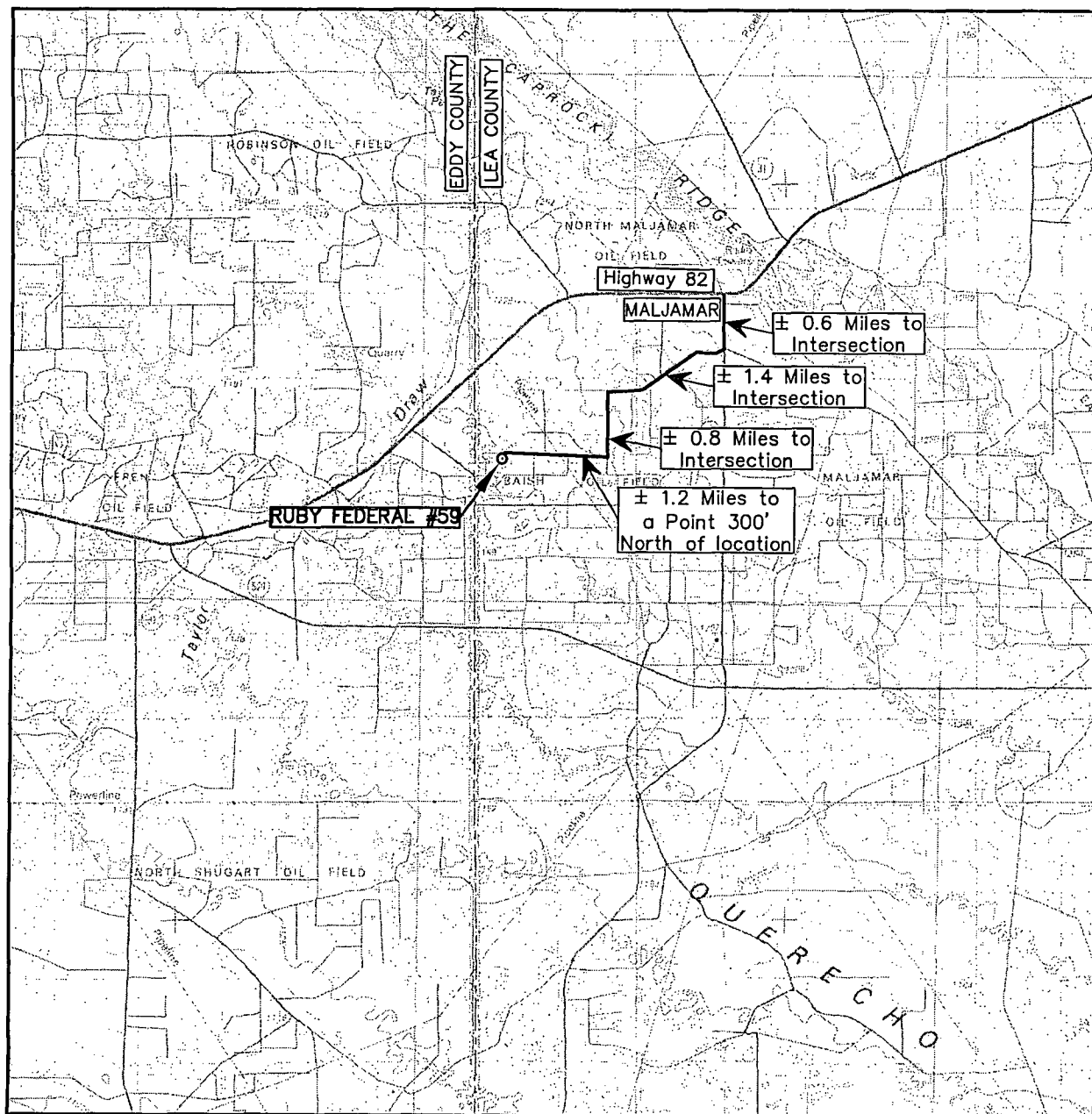
LEASE RUBY FEDERAL

U.S.G.S. TOPOGRAPHIC MAP
MALJAMAR



110 W. LOUISIANA, STE. 110
MIDLAND TEXAS, 79701
(432) 687-0865 - (432) 687-0868 FAX

VICINITY MAP



SCALE: 1" = 2 MILES

SEC. 18 TWP. 17-S RGE. 32-E

SURVEY N.M.P.M.

COUNTY LEA

DESCRIPTION 330' FSL & 1850' FWL

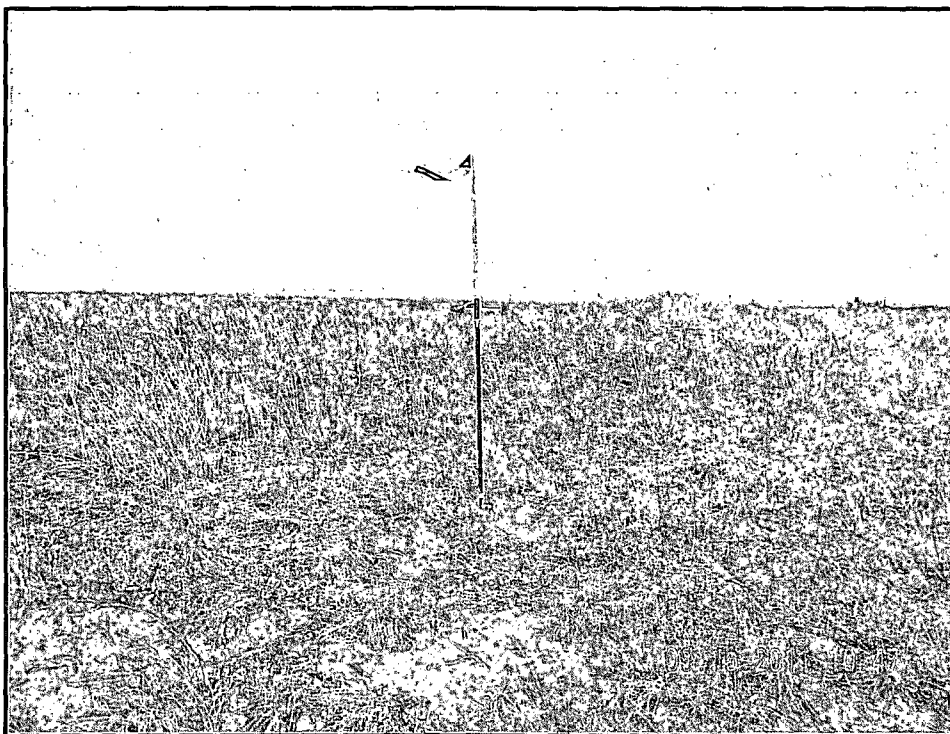
ELEVATION 3949'

OPERATOR CONOCOPHILLIPS

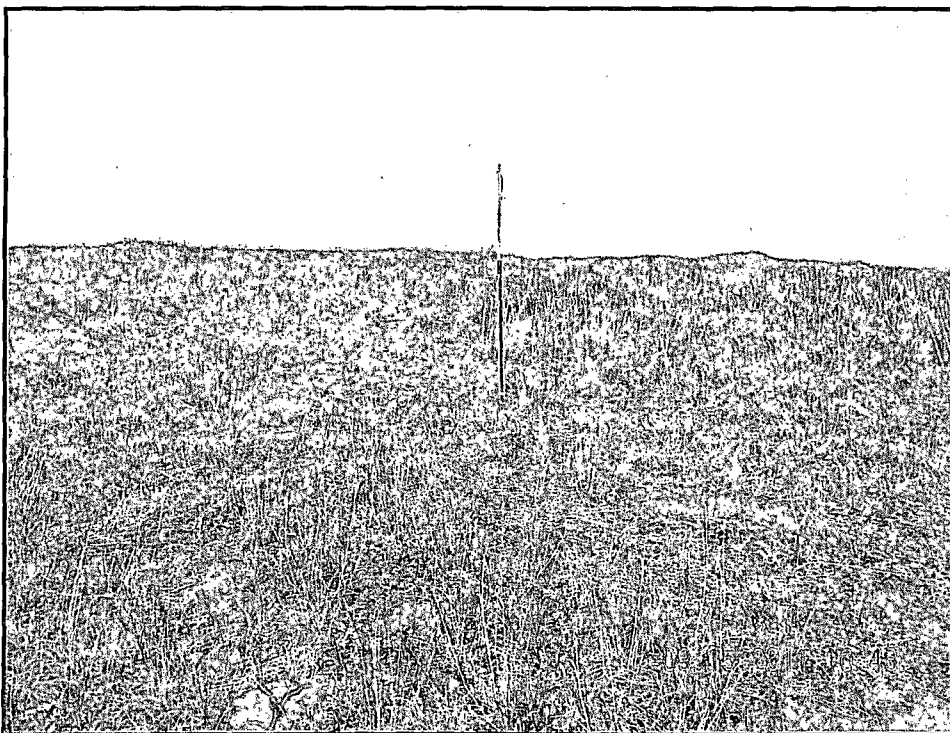
LEASE RUBY FEDERAL



110 W. LOUISIANA, STE. 110
MIDLAND TEXAS, 79701
(432) 687-0865 - (432) 687-0868 FAX



NORTHERLY VIEW TO LOCATION STAKE



WESTERLY VIEW TO LOCATION STAKE


ConocoPhillips

RUBY FEDERAL #59

Located 330' FSL & 1850' FWL, Section 18
Township 17 South, Range 32 East, N.M.P.M.
Lea County, New Mexico

WEST
COMPANY
of Midland, Inc.

110 W. LOUISIANA, STE. 110
MIDLAND TEXAS, 79701
(432) 687-0865 - (432) 687-0868 FAX

Drawn By: JCC

Date: September 29, 2011

[illegible]

Ruby Federal Please insert into
#59 APD 12/27/12
Team

MITCHELL
13
RUBY
Ruby Federal
59
SHL BHL