

HOBBS OCD

## DISTRICT I

1025 N. French Dr., Hobbs, NM 88240  
Phone (505) 334-6161 Fax: (505) 334-0720

## DISTRICT II

811 S. First St., Artesia, NM 88210  
Phone (505) 746-1283 Fax: (505) 746-0720

## DISTRICT III

1000 Rio Brazos Rd., Aztec, NM 87410  
Phone (505) 334-6176 Fax: (505) 334-6170

## DISTRICT IV

1220 S. St. Francis Dr., Santa Fe, NM 87505  
Phone (505) 476-3460 Fax: (505) 476-3462

MAR 05 2013

State of New Mexico  
Energy, Minerals and Natural Resources Department

Form C-102

Revised August 1, 2011

Submit one copy to appropriate  
District Office

## OIL CONSERVATION DIVISION

1220 South St. Francis Dr.  
Santa Fe, New Mexico 87505

RECEIVED

## WELL LOCATION AND ACREAGE DEDICATION PLAT

☐ AMENDED REPORT

API Number <b>30-025-41035</b>	Pool Code <b>23000</b>	Pool Name <b>Eunice/Monument: Hayburg San Andres</b>
Property Code <b>302708</b>	Property Name <b>NMGSAU</b>	Well Number <b>383</b>
OGRID No. <b>873</b>	Operator Name <b>APACHE CORPORATION</b>	Elevation <b>3692</b>

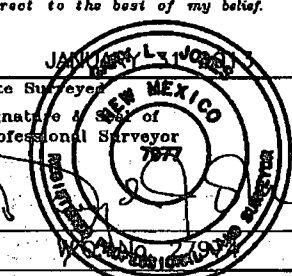
## Surface Location

UL or lot No.	Section	Township	Range	Lot Idn	Feet from the	North/South line	Feet from the	East/West line	County
H	24	19 S	36 E		2600	NORTH	1280	EAST	LEA

## Bottom Hole Location If Different From Surface

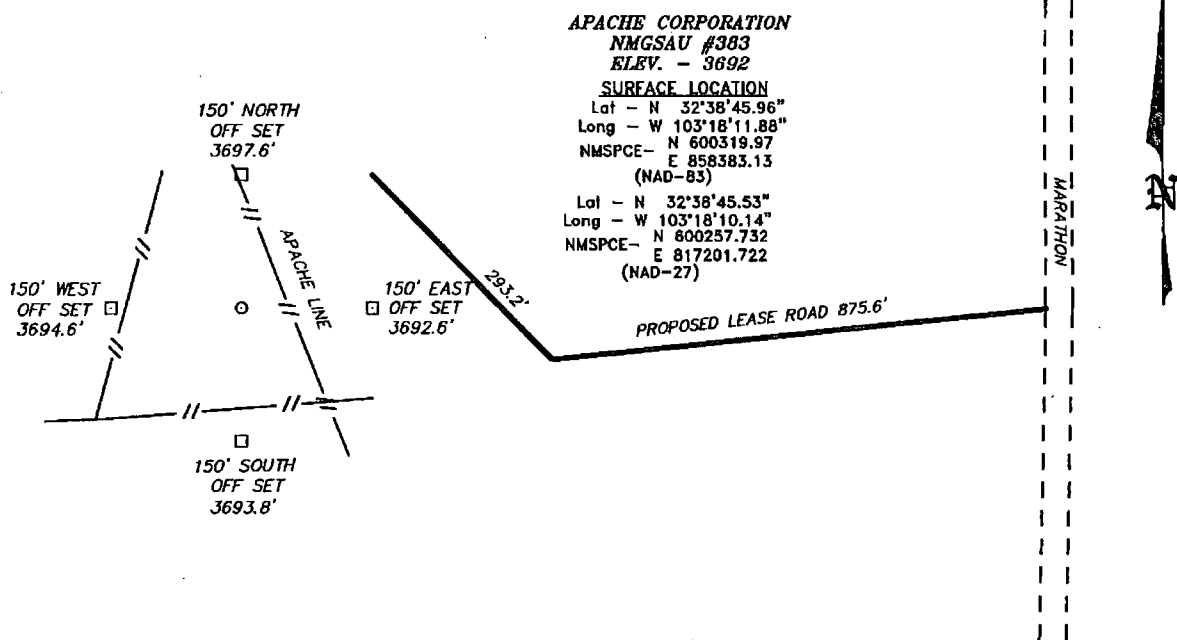
UL or lot No.	Section	Township	Range	Lot Idn	Feet from the	North/South line	Feet from the	East/West line	County
Dedicated Acres <b>40</b>	Joint or Infill	Consolidation Code	Order No.						

NO ALLOWABLE WILL BE ASSIGNED TO THIS COMPLETION UNTIL ALL INTERESTS HAVE BEEN CONSOLIDATED  
OR A NON-STANDARD UNIT HAS BEEN APPROVED BY THE DIVISION

N 602879.97 E 854359.82 (NAD-83)		N 602902.83 E 856999.93 (NAD-83)		N 602935.09 E 829636.19 (NAD-83)	<b>OPERATOR CERTIFICATION</b> I hereby certify that the information contained herein is true and complete to the best of my knowledge and belief, and that this organization either owns a working interest or unleased mineral interest in the land including the proposed bottom hole location or has a right to drill this well at this location pursuant to a contract with an owner of such a mineral or working interest, or to a voluntary pooling agreement or a compulsory pooling order heretofore entered by the division. <i>Vicki Brown</i> 2/26/13 Signature Date <b>Vicki Brown</b> Printed Name <b>vicki.brown@apachecorp.com</b> Email Address
N 600236.90 E 854384.41 (NAD-83)					
		<b>SURFACE LOCATION</b> Lat - N 32°38'45.96" Long - W 103°18'11.88" NMSPCE- N 600319.97 E 858383.13 (NAD-83) Lat - N 32°38'45.53" Long - W 103°18'10.14" NMSPCE- N 600257.732 E 817201.722 (NAD-27)			<b>SURVEYOR CERTIFICATION</b> I hereby certify that the well location shown on this plat was plotted from field notes of actual surveys made by me or under my supervision and that the same is true and correct to the best of my belief.  Date Surveyed Signature of Professional Surveyor Certificate No. Gary L. Jones 7977 BASIN SURVEYS 27974
N 597589.78 E 854410.22 (NAD-83)		N 597622.03 E 857052.83 (NAD-83)		N 597640.83 E 859685.89 (NAD-83)	

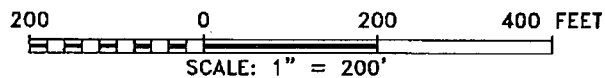
MAR 06 2013

SECTION 24, TOWNSHIP 19 SOUTH, RANGE 36 EAST, N.M.P.M.,  
LEA COUNTY, NEW MEXICO.



**DRIVING DIRECTIONS**

FROM 62-180 AND MADDOX ROAD GO SOUTH 3.5 MILES TO PROPOSED ROAD AND LOCATION.



**APACHE CORPORATION**

REF: NMGSAU #383 / WELL PAD TOPO

THE NMGSAU #383 LOCATED 2600'

FROM THE NORTH LINE AND 1280' FROM THE EAST LINE OF  
SECTION 24, TOWNSHIP 19 SOUTH, RANGE 36 EAST,

N.M.P.M., LEA COUNTY, NEW MEXICO.

**BASIN SURVEYS** P.O. BOX 1786-HOBBS, NEW MEXICO

W.O. Number: 27974 Drawn By: D. JONES

Date: 02-05-20113 Disk: DAJ 27974

Survey Date: 01-31-2013 Sheet 1 of 1 Sheets