

HOBS OGD

MAR 06 2013

District I
1625 N. French Dr., Hobbs, NM 88240
Phone: (575) 393-6161 Fax: (575) 393-0720
District II
811 S. First St., Artesia, NM 88210
Phone: (575) 748-1283 Fax: (575) 748-9720
District III
1000 Rio Brazos Road, Aztec, NM 87410
Phone: (505) 334-6178 Fax: (505) 334-6170
District IV
1220 S. St. Francis Dr., Santa Fe, NM 87505
Phone: (505) 476-3460 Fax: (505) 476-3462

State of New Mexico

Energy, Minerals & Natural Resources Department
RECEIVED
OIL CONSERVATION DIVISION

1220 South St. Francis Dr.

Santa Fe, NM 87505

Form C-102

Revised August 1, 2011

Submit one copy to appropriate

District Office

☐ AMENDED REPORT

WELL LOCATION AND ACREAGE DEDICATION PLAT

¹ API Number 30-025-41050	² Pool Code 97930	³ Pool Name WC025 G065183518 A;
⁴ Property Code 39319	⁵ Property Name IRONHOUSE "19" STATE COM	
⁷ OGRID No. 6137	⁸ Operator Name DEVON ENERGY PRODUCTION COMPANY, L.P.	⁶ Well Number 3H
		⁹ Elevation 3946.1

¹⁰ Surface Location

UL or lot no.	Section	Township	Range	Lot Idn	Feet from the	North/South line	Feet from the	East/West line	County
O	19	18 S	35 E		175	SOUTH	1810	EAST	LEA

¹¹ Bottom Hole Location If Different From Surface

UL or lot no.	Section	Township	Range	Lot Idn	Feet from the	North/South line	Feet from the	East/West line	County
B	19	18 S	35 E		330	NORTH	1980	EAST	LEA

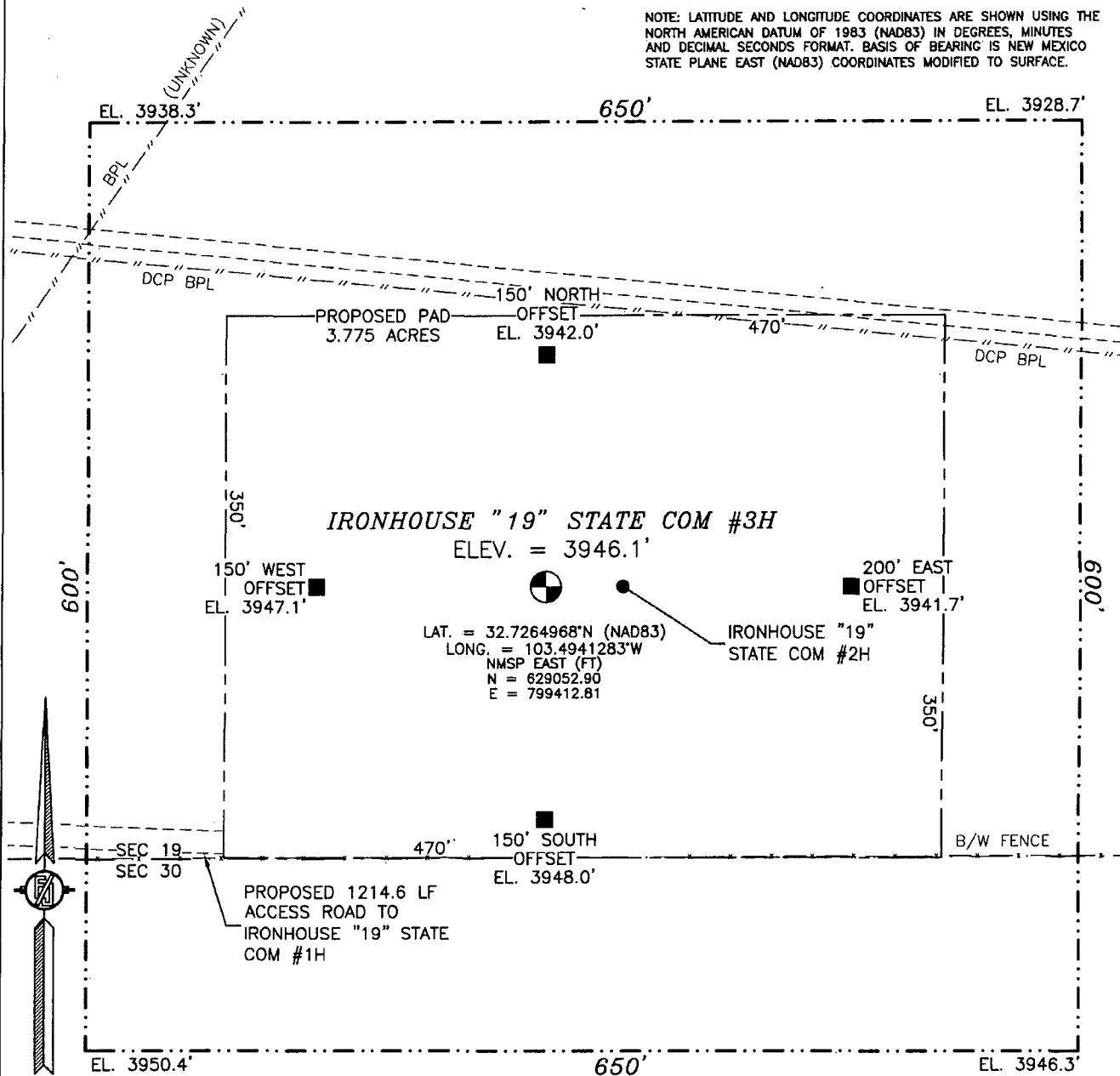
¹² Dedicated Acres 160	¹³ Joint or Infill	¹⁴ Consolidation Code	¹⁵ Order No.
---	-------------------------------	----------------------------------	-------------------------

No allowable will be assigned to this completion until all interests have been consolidated or a non-standard unit has been approved by the division.

<p>S89°50'55"W 2618.37 FT</p> <p>NW CORNER SEC. 19 LAT. = 32.7406058°N LONG. = 103.5052878°W NMSP EAST (FT) N = 634159.14 E = 795940.79</p> <p>LOT 1</p> <p>NOTE: LATITUDE AND LONGITUDE COORDINATES ARE SHOWN USING THE NORTH AMERICAN DATUM OF 1983 (NAD83) IN DEGREES MINUTES DECIMAL SECONDS FORMAT. BASIS OF BEARING IS NEW MEXICO STATE PLANE EAST (NAD83) COORDINATES MODIFIED TO SURFACE.</p> <p>LOT 2</p> <p>LOT 3</p> <p>LOT 4</p> <p>SW CORNER SEC. 19 LAT. = 32.7260645°N LONG. = 103.5052646°W NMSP EAST (FT) N = 628868.69 E = 795989.28</p> <p>N89°50'44"E 2617.36 FT</p>		<p>S89°50'55"W 2618.37 FT</p> <p>NE CORNER SEC. 19 LAT. = 32.7405301°N LONG. = 103.4882576°W NMSP EAST (FT) N = 634172.96 E = 801177.51</p> <p>1980'</p> <p>BOTTOM OF HOLE</p> <p>BOTTOM OF HOLE LAT. = 32.7396522°N LONG. = 103.4946945°W NMSP EAST (FT) N = 633837.81 E = 799200.81</p> <p>IRONHOUSE "19" STATE COM #3H ELEV. = 3946.1' LAT. = 32.7264968°N (NAD83) LONG. = 103.4941283°W NMSP EAST (FT) N = 629052.90 E = 799412.81</p> <p>SURFACE LOCATION</p> <p>1810'</p> <p>N89°50'44"E 2617.36 FT</p>	<p>¹⁷ OPERATOR CERTIFICATION</p> <p>I hereby certify that the information contained herein is true and complete to the best of my knowledge and belief, and that this organization either owns a working interest or unleased mineral interest in the land including the proposed bottom hole location or has a right to drill this well at this location pursuant to a contract with an owner of such a mineral or working interest, or to a voluntary pooling agreement or a compulsory pooling order heretofore entered by the division.</p> <p><i>D. H. Cook</i> 3/6/2013 Signature Date David H. Cook Regulatory Specialist Printed Name david.cook@devn.com E-mail Address</p> <p>¹⁸ SURVEYOR CERTIFICATION</p> <p>I hereby certify that the well location shown on this plat was plotted from field notes of actual surveys made by me or under my supervision, and that the same is true and correct to the best of my belief.</p> <p>FEBRUARY 28, 2013 Date of Survey</p> <p><i>Harmon E. Jaramillo</i> Signature and Seal of Professional Surveyor Certificate Number: HARMON E. JARAMILLO, PLS 12797 SURVEY NO. 1580</p>
--	--	---	--

SECTION 19, TOWNSHIP 18 SOUTH, RANGE 35 EAST, N.M.P.M.
LEA COUNTY, STATE OF NEW MEXICO

NOTE: LATITUDE AND LONGITUDE COORDINATES ARE SHOWN USING THE NORTH AMERICAN DATUM OF 1983 (NAD83) IN DEGREES, MINUTES AND DECIMAL SECONDS FORMAT. BASIS OF BEARING IS NEW MEXICO STATE PLANE EAST (NAD83) COORDINATES MODIFIED TO SURFACE.



010 50 100 200

SCALE 1" = 100'

DIRECTIONS TO LOCATION

FROM THE INTERSECTION OF STATE HIGHWAY 529 AND STATE HIGHWAY 238 GO WEST ON STATE HIGHWAY 529 APPROX. 5.5 MILES. GO NORTHEAST ON CALICHE LEASE ROAD (200'± EAST OF MILE POST 23) FOR APPROX. 0.6 OF A MILE. CONTINUE EAST APPROX. 0.25 MILES. CONTINUE NORTHEAST APPROX. 0.6 OF A MILE. CONTINUE NORTHEAST APPROX. 0.7 OF A MILE. CONTINUE NORTHEAST APPROX. 0.4 OF A MILE TO IRONHOUSE "19" STATE COM #1H WELL LOCATION IS APPROX. 1677 FT EAST.

DEVON ENERGY PRODUCTION COMPANY, L.P.

IRONHOUSE "19" STATE COM #3H

LOCATED 175 FT. FROM THE SOUTH LINE
AND 1810 FT. FROM THE EAST LINE OF

SECTION 19, TOWNSHIP 18 SOUTH,

RANGE 35 EAST, N.M.P.M.

LEA COUNTY, STATE OF NEW MEXICO

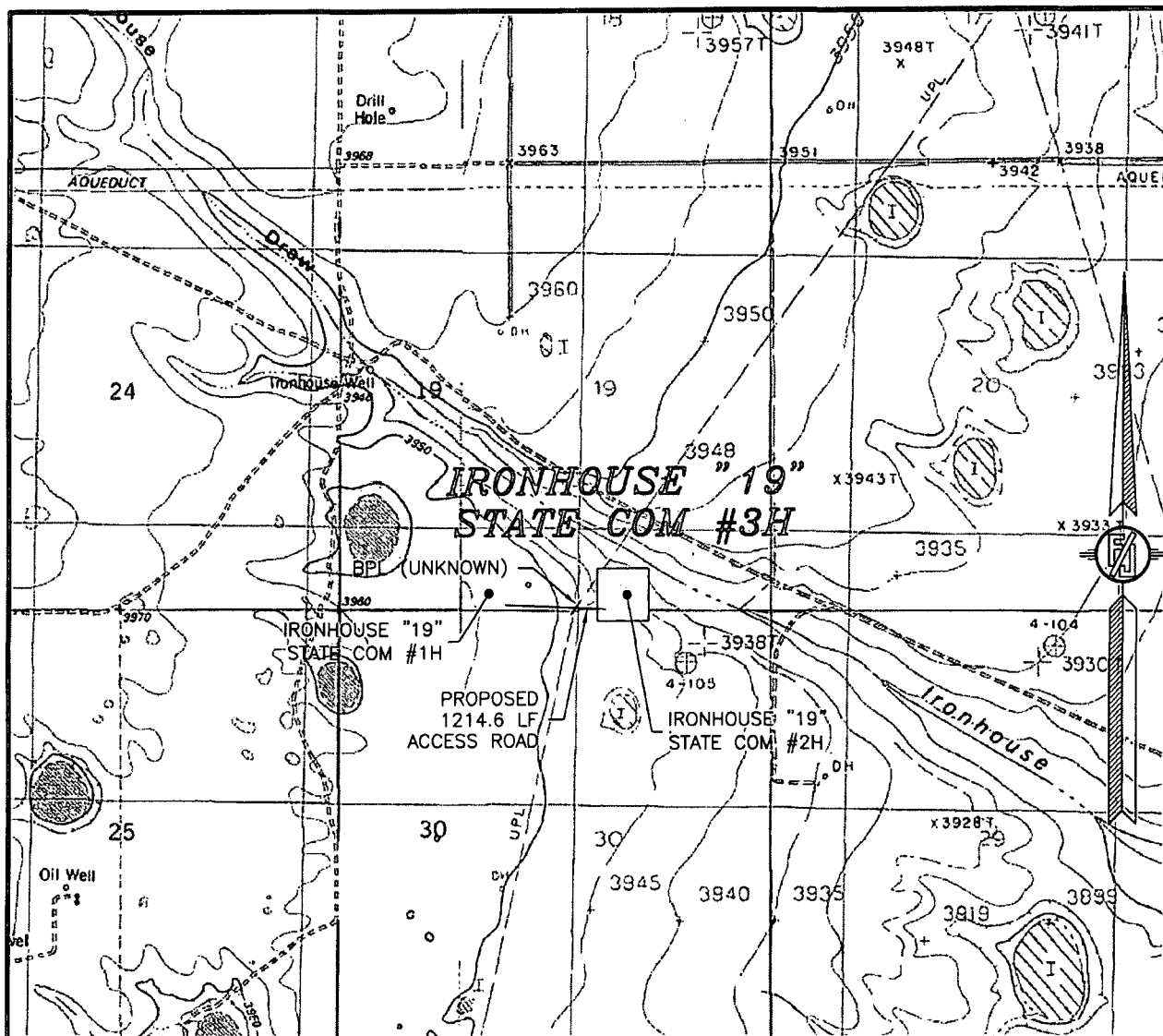
FEBRUARY 28, 2013

SURVEY NO. 1580

MADRON SURVEYING, INC. 301 SOUTH CANAL (575) 234-3341

CARLSBAD, NEW MEXICO

19, TOWNSHIP 18 SOUTH, RANGE 35 EAST, N.M.P.M.
LEA COUNTY, STATE OF NEW MEXICO
LOCATION VERIFICATION MAP



USGS QUAD MAP:
IRONHOUSE DRAW

NOT TO SCALE

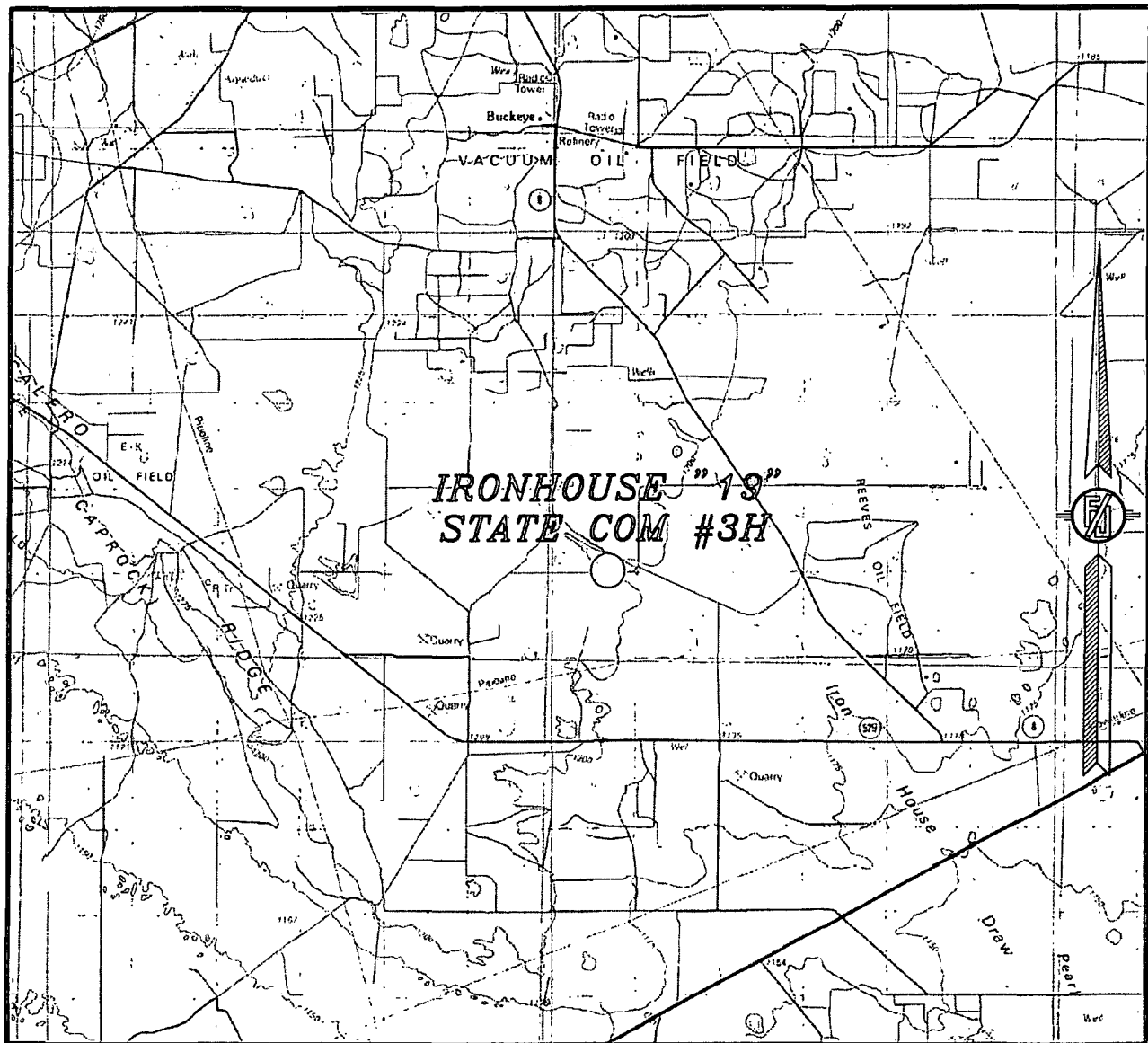
DEVON ENERGY PRODUCTION COMPANY, L.P.
IRONHOUSE "19" STATE COM #3H
LOCATED 175 FT. FROM THE SOUTH LINE
AND 1810 FT. FROM THE EAST LINE OF
SECTION 19, TOWNSHIP 18 SOUTH,
RANGE 35 EAST, N.M.P.M.
LEA COUNTY, STATE OF NEW MEXICO

FEBRUARY 28, 2013

SURVEY NO. 1580

MADRON SURVEYING, INC. 301 SOUTH CANAL (575) 234-3341 CARLSBAD, NEW MEXICO

SECTION 19, TOWNSHIP 18 SOUTH, RANGE 35 EAST, N.M.P.M.
LEA COUNTY, STATE OF NEW MEXICO
VICINITY MAP



NOT TO SCALE

DEVON ENERGY PRODUCTION COMPANY, L.P.

IRONHOUSE "19" STATE COM #3H

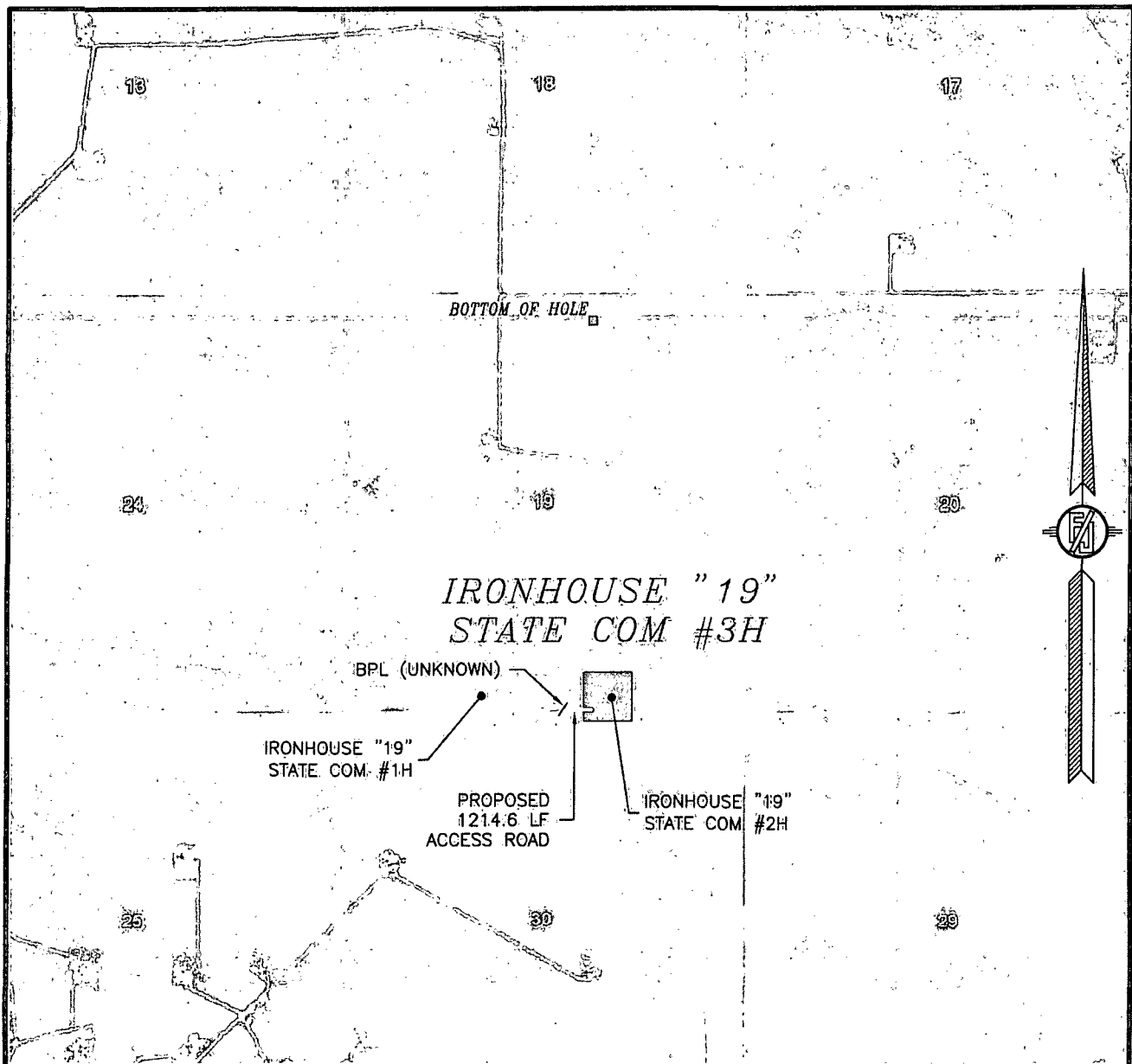
LOCATED 175 FT. FROM THE SOUTH LINE
AND 1810 FT. FROM THE EAST LINE OF
SECTION 19, TOWNSHIP 18 SOUTH,
RANGE 35 EAST, N.M.P.M.
LEA COUNTY, STATE OF NEW MEXICO

FEBRUARY 28, 2013

SURVEY NO. 1580

MADRON SURVEYING, INC. 301 SOUTH CANAL CARLSBAD, NEW MEXICO
(575) 234-3341

SECTION 19, TOWNSHIP 18 SOUTH, RANGE 35 EAST, N.M.P.M.
LEA COUNTY, STATE OF NEW MEXICO
AERIAL PHOTO



NOT TO SCALE
AERIAL PHOTO:
GOOGLE EARTH
MARCH 2012

DEVON ENERGY PRODUCTION COMPANY, L.P.

IRONHOUSE "19" STATE COM #3H
LOCATED 175 FT. FROM THE SOUTH LINE
AND 1810 FT. FROM THE EAST LINE OF
SECTION 19, TOWNSHIP 18 SOUTH,
RANGE 35 EAST, N.M.P.M.
LEA COUNTY, STATE OF NEW MEXICO

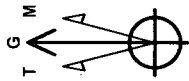
FEBRUARY 28, 2013

SURVEY NO. 1580

MADRON SURVEYING, INC. 301 SOUTH CANAL CARLSBAD, NEW MEXICO
(575) 234-3341

DEVON ENERGY

Project: Lea County, NM (NAD-83)
 Site: Ironhouse "19" State Com
 Well: 3H
 Wellbore: OH
 Design: Plan #1



Azimuths to Grid North
 True North: -0.45°
 Magnetic North: 6.92°
 Magnetic Field
 Strength: 48751.0snT
 Dip Angle: 60.62°
 Date: 03/05/2013
 Model: IGRF2010

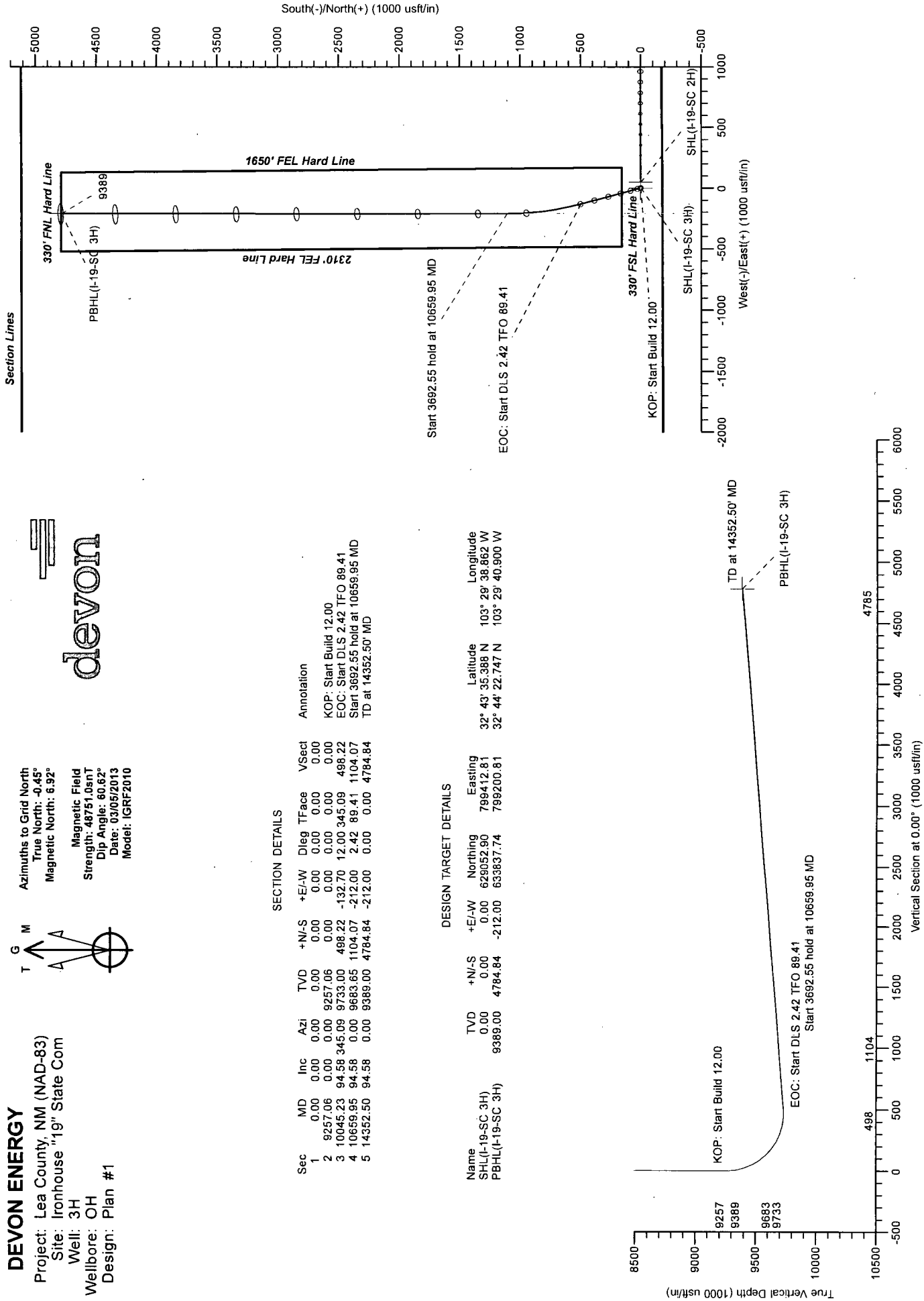


SECTION DETAILS

Sec	MD	Inc	Azi	TVD	+N/-S	+E/-W	Dleg	TFace	VSect	Annotation
1	0.00	0.00	0.00	0.00	0.00	0.00	0.00	0.00	0.00	
2	9257.06	0.00	0.00	9257.06	0.00	0.00	0.00	0.00	0.00	KOP: Start Build 12.00
3	10045.23	94.58	345.09	9733.00	498.22	-132.70	12.00	345.09	498.22	EOC: Start DLS 2.42 TFO 89.41
4	10659.95	94.58	0.00	9683.65	1104.07	-212.00	2.42	89.41	1104.07	Start 3692.55 hold at 10659.95 MD
5	14352.50	94.58	0.00	9389.00	4784.84	-212.00	0.00	0.00	4784.84	TD at 14352.50' MD

DESIGN TARGET DETAILS

Name	TVD	+N/-S	+E/-W	Northing	Easting	Latitude	Longitude
SHL(I-19-SC 3H)	0.00	0.00	0.00	629052.90	799412.81	32° 43' 35.388 N	103° 29' 38.862 W
PBHL(I-19-SC 3H)	9389.00	4784.84	-212.00	633837.74	799200.81	32° 44' 22.747 N	103° 29' 40.900 W



LEAM DRILLING SYSTEMS LLC
 2010 East Davis, Conroe, Texas 77301
 Phone: 936/756-7577, Fax 936/756-7595

Plan: Plan #1 (3H/OH)
 Ironhouse "19" State Com
 Created By: Tyler Carlson
 Date: 11:49, March 05 2013
 Approved: _____
 Date: _____