

DISTRICT I

1625 N. French Dr., Hobbs, NM 88240
Phone (505) 393-6161 Fax: (505) 393-0720

DISTRICT II

811 S. First St., Artesia, NM 88210
Phone (505) 748-1253 Fax: (505) 748-0720

DISTRICT III

1000 Rio Bravos Rd., Aztec, NM 87410
Phone (505) 324-6178 Fax: (505) 334-6170

DISTRICT IV

1220 S. St. Francis Dr., Santa Fe, NM 87505
Phone (505) 476-3480 Fax: (505) 476-3482

State of New Mexico
Energy, Minerals and Natural Resources Department

OIL CONSERVATION DIVISION

1220 South St. Francis Dr.
Santa Fe, New Mexico 87505

Form C-102

Revised August 1, 2011

Submit one copy to appropriate
District Office

WELL LOCATION AND ACREAGE DEDICATION PLAT

☐ AMENDED REPORT

API Number 30-025-41081	Pool Code 78760	Pool Name House; Sub
Property Code 39779	Property Name PINOT	Well Number 1
OGRID No. 873	Operator Name APACHE CORPORATION	Elevation 3576'

Surface Location

UL or lot No.	Section	Township	Range	Lot Idn	Feet from the	North/South line	Feet from the	East/West line	County
LOT 3	2	20 S	38 E		330	NORTH	2310	WEST	LEA

Bottom Hole Location If Different From Surface

UL or lot No.	Section	Township	Range	Lot Idn	Feet from the	North/South line	Feet from the	East/West line	County

Dedicated Acres 39.77	Joint or Infill	Consolidation Code	Order No.
---------------------------------	-----------------	--------------------	-----------

NO ALLOWABLE WILL BE ASSIGNED TO THIS COMPLETION UNTIL ALL INTERESTS HAVE BEEN CONSOLIDATED
OR A NON-STANDARD UNIT HAS BEEN APPROVED BY THE DIVISION

<p>LOT 4 N: 587489.5 E: 871358.1 NAD 27</p> <p>2310'</p> <p>LOT 3</p> <p>LOT 2 N: 587491.5 E: 873989.2 NAD 27</p> <p>LOT 1 N: 587544.1 E: 876933.4 NAD 27</p> <p>SURFACE LOCATION Lat - N 32°36'30.46" Long - W 103°07'13.31" NMSPC- N 587220.0 E 914851.2 (NAD-83) Lat - N 32°36'30.05" Long - W 103°07'11.59" NMSPC- N 587160.9 E 873669.4 (NAD-27)</p> <p>N: 582242.1 E: 874059.4 NAD 27</p> <p>N: 582273.7 E: 876698.8 NAD 27</p>	<p>OPERATOR CERTIFICATION</p> <p>I hereby certify that the information contained herein is true and complete to the best of my knowledge and belief, and that this organization either owns a working interest or unleased mineral interest in the land including the proposed bottom hole location or has a right to drill this well at this location pursuant to a contract with an owner of such a mineral or working interest, or to a voluntary pooling agreement or a compulsory pooling order heretofore entered by the division.</p> <p><i>Vicki Brown</i> 3/28/13 Signature Date Vicki Brown Printed Name vicki.brown@apachecorp.com Email Address</p> <p>SURVEYOR CERTIFICATION</p> <p>I hereby certify that the well location shown on this plat was plotted from field notes of actual surveys made by me or under my supervision, and that the same is true and correct to the best of my belief.</p> <p>MARCH 22, 2013 Date Surveyed Signature & Seal of Professional Surveyor 7977 Certificate No. Gary L. Jones 7977 BASIN SURVEYS 28369</p>
--	--

APR 03 2013

DISTRICT I
1625 N. French Dr., Hobbs, NM 88240
Phone (575) 393-6161 Fax: (575) 393-0750

DISTRICT II
811 S. First St., Artesia, NM 88210
Phone (575) 748-1283 Fax: (575) 748-9780

DISTRICT III
1000 Rio Brazos Rd., Aatec, NM 87410
Phone (505) 354-6178 Fax: (505) 354-6178

DISTRICT IV
1220 S. St. Francis Dr., Santa Fe, NM 87505
Phone (505) 476-3480 Fax: (505) 476-8482

State of New Mexico
Energy, Minerals and Natural Resources Department

OIL CONSERVATION DIVISION
1220 South St. Francis Dr.
Santa Fe, New Mexico 87505

Form C-102
Revised August 1, 2011

Submit one copy to appropriate
District Office

WELL LOCATION AND ACREAGE DEDICATION PLAT

☐ AMENDED REPORT

API Number 30-025-41081	Pool Code 33230	Pool Name House; Blinbury
Property Code 39779	Property Name PINOT	Well Number 1
UGRID No. 813	Operator Name APACHE CORPORATION	Elevation 3576'

Surface Location

UL or lot No.	Section	Township	Range	Lot Idn	Feet from the	North/South line	Feet from the	East/West line	County
LOT 3	2	20 S	38 E		330	NORTH	2310	WEST	LEA

Bottom Hole Location If Different From Surface

UL or lot No.	Section	Township	Range	Lot Idn	Feet from the	North/South line	Feet from the	East/West line	County
Dedicated Acres 39.77	Joint or Infill	Consolidation Code	Order No.						

NO ALLOWABLE WILL BE ASSIGNED TO THIS COMPLETION UNTIL ALL INTERESTS HAVE BEEN CONSOLIDATED
OR A NON-STANDARD UNIT HAS BEEN APPROVED BY THE DIVISION

<p>LOT 4 N: 587489.5 E: 871358.1 NAD 27</p> <p>LOT 3</p> <p>LOT 2 N: 587481.6 E: 873998.2 NAD 27</p> <p>LOT 1 N: 587544.1 E: 876633.4 NAD 27</p> <p>SURFACE LOCATION Lat - N 32°36'30.46" Long - W 103°07'13.31" NMSPCE- N 587220.0 E 914851.2 (NAD-83) Lat - N 32°36'30.05" Long - W 103°07'11.59" NMSPCE- N 587160.9 E 873669.4 (NAD-27)</p> <p>N: 582242.1 E: 874059.4 NAD 27</p> <p>N: 582273.7 E: 876698.8 NAD 27</p>	<p>OPERATOR CERTIFICATION</p> <p>I hereby certify that the information contained herein is true and complete to the best of my knowledge and belief, and that this organization either owns a working interest or unleased mineral interest in the land including the proposed bottom hole location or has a right to drill this well at this location pursuant to a contract with an owner of such a mineral or working interest, or to a voluntary pooling agreement or a compulsory pooling order heretofore entered by the Division.</p> <p><i>Vicki Brown</i> 3/28/12 Signature Date Vicki Brown Printed Name vicki.brown@apachecorp.com Email Address</p> <p>SURVEYOR CERTIFICATION</p> <p>I hereby certify that the well location shown on this plat was plotted from field notes of actual surveys made by me or under my supervision, and that the same is true and correct to the best of my belief.</p> <p>MARCH 29 2012 Date Surveyed Signature of Professional Surveyor 7877 Certificate No. Gary L. Jones 7977 BASIN SURVEYS 28369</p>
---	--

DISTRICT I
1625 N. French Dr., Hobbs, NM 88240
Phone (505) 393-6161 Fax: (505) 393-0720

DISTRICT II
811 S. First St., Artesia, NM 88210
Phone (505) 748-1283 Fax: (505) 748-0720

DISTRICT III
1000 Rio Brazos Rd., Aztec, NM 87410
Phone (505) 354-6175 Fax: (505) 354-6170

DISTRICT IV
1220 S. St. Francis Dr., Santa Fe, NM 87505
Phone (505) 478-3480 Fax: (505) 478-3482

State of New Mexico
Energy, Minerals and Natural Resources Department

OIL CONSERVATION DIVISION
1220 South St. Francis Dr.
Santa Fe, New Mexico 87505

Form C-102
Revised August 1, 2011

Submit one copy to appropriate
District Office

WELL LOCATION AND ACREAGE DEDICATION PLAT

☐ AMENDED REPORT

API Number 30-015-41081	Pool Code 33250	Pool Name <i>Hause; Drinkard</i>
Property Code 39779	Property Name PINOT	Well Number 1
GRID No. 873	Operator Name APACHE CORPORATION	Elevation 3576'

Surface Location

UL or lot No.	Section	Township	Range	Lot Idn	Feet from the	North/South line	Feet from the	East/West line	County
(c) LOT 3	2	20 S	38 E		330	NORTH	2310	WEST	LEA

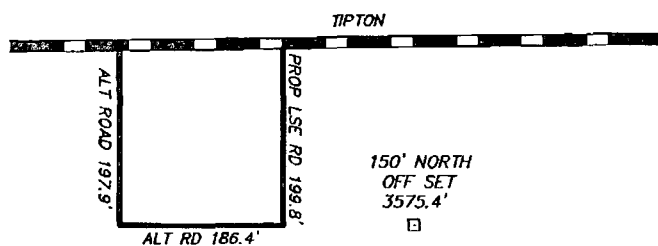
Bottom Hole Location If Different From Surface

UL or lot No.	Section	Township	Range	Lot Idn	Feet from the	North/South line	Feet from the	East/West line	County
Dedicated Acres 39.77	Joint or Infill	Consolidation Code	Order No.						

NO ALLOWABLE WILL BE ASSIGNED TO THIS COMPLETION UNTIL ALL INTERESTS HAVE BEEN CONSOLIDATED
OR A NON-STANDARD UNIT HAS BEEN APPROVED BY THE DIVISION

LOT 4 N: 587498.5 E: 871356.1 NAD 27	LOT 3 N: 587498.5 E: 871356.1 NAD 27	LOT 2 N: 587491.6 E: 873998.2 NAD 27	LOT 1 N: 587544.1 E: 876633.4 NAD 27
SURFACE LOCATION Lot - N 32°36'30.46" Long - W 103°07'13.31" NMSPEC- N 587220.0 E 914851.2 (NAD-83) Lot - N 32°36'30.05" Long - W 103°07'11.59" NMSPEC- N 587160.9 E 873669.4 (NAD-27)			
OPERATOR CERTIFICATION I hereby certify that the information contained herein is true and complete to the best of my knowledge and belief, and that this organization either owns a working interest or unleased mineral interest in the land including the proposed bottom hole location or has a right to drill this well at this location pursuant to a contract with an owner of such a mineral or working interest, or to a voluntary pooling agreement or a compulsory pooling order heretofore entered by the division. <i>Vicki Brown</i> 3/28/13 Signature Date Vicki Brown Printed Name vicki.brown@apachecorp.com Email Address			
SURVEYOR CERTIFICATION I hereby certify that the well location shown on this plat was plotted from field notes of actual surveys made by me or under my supervision and that the same is true and correct to the best of my belief. Date Surveyed Signature & Seal of Professional Surveyor Certificate No. Gary L. Jones 7977 BASIN SURVEYS 28369			

SECTION 2, TOWNSHIP 20 SOUTH, RANGE 38 EAST, N.M.P.M.,
LEA COUNTY, NEW MEXICO.

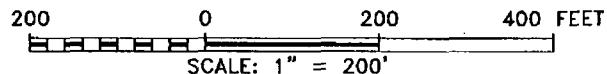


APACHE CORPORATION
PINOT #1
ELEV. - 3576'

Lat - N 32°36'30.46"
Long - W 103°07'13.31"
NMSPCE- N 587220.0
E 914851.2
(NAD-83)
Lat - N 32°36'30.05"
Long - W 103°07'11.59"
NMSPCE- N 587160.9
E 873669.4
(NAD-27)



WELL IS LOCATED ±7 MILES SOUTH OF HOBBS, NEW MEXICO.



Directions to Location:

FROM MILE MARKER 44 OF HWY 18; GO SOUTH 0.6
MILES TO LEASE ROAD, ON LEASE ROAD GO EAST
0.4 MILES TO PROPOSED LEASE ROAD.

APACHE CORPORATION

REF: PINOT #1 / WELL PAD TOPO

THE PINOT #1 LOCATED 330'

FROM THE NORTH LINE AND 2310' FROM THE WEST LINE OF
SECTION 2, TOWNSHIP 20 SOUTH, RANGE 38 EAST,

N.M.P.M., LEA COUNTY, NEW MEXICO.

BASIN SURVEYS P.O. BOX 1786-HOBBS, NEW MEXICO

W.O. Number: 28369 Drawn By: J. SMALL

Date: 03-27-2013 Disk: JMS 28369

Survey Date: 03-22-2013 Sheet 1 of 1 Sheets