

1025 N. French Dr., Hobbs, NM 88240
Phone (575) 393-6161 Fax (575) 393-0729

DISTRICT II

811 S. First St., Artesia, NM 88210
Phone (505) 748-1283 Fax (505) 748-9780

DISTRICT III

1000 Rio Brazos Rd., Aztec, NM 87410
Phone (505) 334-8170 Fax (505) 834-8170

DISTRICT IV

1220 S. St. Francis Dr., Santa Fe, NM 87505
Phone (605) 476-3400 Fax: (605) 476-3462

State of New Mexico
Energy, Minerals and Natural Resources Department

OIL CONSERVATION DIVISION

1220 South St. Francis Dr.
Santa Fe, New Mexico 87505

Form C-102

Revised August 1, 2011

**Submit one copy to appropriate
District Office**

WELL LOCATION AND ACREAGE DEDICATION PLAT

☐ AMENDED REPORT

API Number 30-025-41082	Pool Code 33230	Pool Name House; Blinbury
Property Code 39779	Property Name PINOT	Well Number 2
OGRID No. 873	Operator Name APACHE CORPORATION	Elevation 3571'

Surface Location

UL or lot No.	Section	Township	Range	Lot Idn	Feet from the	North/South line	Feet from the	East/West line	County
E	2	20 S	38 E		1850	NORTH	990	WEST	LEA

Bottom Hole Location If Different From Surface

U/L or lot No.	Section	Township	Range	Lot Idn	Feet from the	North/South line	Feet from the	East/West line	County
Dedicated Acres 40	Joint or Infill	Consolidation Code		Order No.					

NO ALLOWABLE WILL BE ASSIGNED TO THIS COMPLETION UNTIL ALL INTERESTS HAVE BEEN CONSOLIDATED
OR A NON-STANDARD UNIT HAS BEEN APPROVED BY THE DIVISION

LOT 4 N.: 587489.5 E.: 971356.1 NAD 27	LOT 3 N.: 587491.5 E.: 973995.2 NAD 27	LOT 2	LOT 1 N.: 587544.1 E.: 876833.4 NAD 27
--	--	--------------	--

1850'

990'

SURFACE LOCATION

Lat - N 32°36'15.67"
Long - W 103°07'28.72"
NMSPCE - N 585710.1
E 913548.6
(NAD-83)

Lat - N 32°36'15.28"
Long - W 103°07'27.00"
NMSPCE - N 585651.0
E 872367.7
(NAD-27)

N.: 582242.1
E.: 874059.4
NAD 27

N.: 582273.7
E.: 876896.6
NAD 27

OPERATOR CERTIFICATION

I hereby certify that the information contained herein is true and complete to the best of my knowledge and belief, and that this organization either owns a working interest or unleased mineral interest in the land including the proposed bottom hole location or has a right to drill this well at this location pursuant to a contract with an owner of such a mineral or working interest, or to a voluntary pooling agreement or a compulsory pooling order heretofore entered by the division.

W Brown 3/26/13

Signature _____ Date _____

Vicki Brown

Printed Name _____

vicki.brown@pachecorp.com

Email Address _____

SURVEYOR CERTIFICATION

I hereby certify that the well location shown on this plat was plotted from field notes of actual surveys made by me or under my supervision and that the same is true and correct to the best of my belief.

FEBRUARY 26 2013

Date Surveyed _____

Signature & Seal of Professional Surveyor _____

7977

Certificate No. Gary L. Jones 7977

BASIN SURVEYS

28244

APR 03 2013

DISTRICT I

1825 N. French Dr., Hobbs, NM 58240
Phone (505) 532-8101 Fax: (505) 334-0720

DISTRICT II

811 S. First St., Artesia, NM 88210
Phone (505) 748-1223 Fax: (505) 748-0720

DISTRICT III

1000 Rio Brazos Rd., Aztec, NM 87410
Phone (505) 334-8178 Fax: (505) 334-8170

DISTRICT IV

1220 S. St. Francis Dr., Santa Fe, NM 87505
Phone (505) 476-3400 Fax: (505) 476-3402

State of New Mexico
Energy, Minerals and Natural Resources Department

OIL CONSERVATION DIVISION

1220 South St. Francis Dr.
Santa Fe, New Mexico 87505

Form C-102

Revised August 1, 2011

Submit one copy to appropriate
District Office

WELL LOCATION AND ACREAGE DEDICATION PLAT

☐ AMENDED REPORT

API Number 30-025-41082	Pool Code 78760	Pool Name Neuse, Jubb
Property Code 39779	Property Name PINOT	Well Number 2
OGRID No. 873	Operator Name APACHE CORPORATION	Elevation 3571'

Surface Location

UL or lot No.	Section	Township	Range	Lot Idn	Feet from the	North/South line	Feet from the	East/West line	County
E	2	20 S	38 E		1850	NORTH	990	WEST	LEA

Bottom Hole Location If Different From Surface

UL or lot No.	Section	Township	Range	Lot Idn	Feet from the	North/South line	Feet from the	East/West line	County
Dedicated Acres 40	Joint or Infill	Consolidation Code	Order No.						

NO ALLOWABLE WILL BE ASSIGNED TO THIS COMPLETION UNTIL ALL INTERESTS HAVE BEEN CONSOLIDATED
OR A NON-STANDARD UNIT HAS BEEN APPROVED BY THE DIVISION

<p>LOT 4 N: 587489.5 E: 871356.1 NAD 27</p>	<p>LOT 3 N: 587491.5 E: 873898.2 NAD 27</p>	<p>LOT 2</p>	<p>LOT 1 N: 587544.1 E: 876833.4 NAD 27</p>
<p>SURFACE LOCATION Lat - N 32°36'15.67" Long - W 103°07'28.72" NMSPCE - N 585710.1 E 913549.6 (NAD-83) Lat - N 32°36'15.26" Long - W 103°07'27.00" NMSPCE - N 585651.0 E 872367.7 (NAD-27)</p>			
<p>OPERATOR CERTIFICATION I hereby certify that the information contained herein is true and complete to the best of my knowledge and belief, and that this organization either owns a working interest or unleased mineral interest in the land including the proposed bottom hole location or has a right to drill this well at this location pursuant to a contract with an owner of such a mineral or working interest, or to a voluntary pooling agreement or a compulsory pooling order heretofore entered by the division. <i>M. Brown</i> 3/24/13 Signature Date Vicki Brown Printed Name vicki.brown@apachecorp.com Email Address</p>			
<p>SURVEYOR CERTIFICATION I hereby certify that the well location shown on this plat was plotted from field notes of actual surveys made by me or under my supervision, and that the same is true and correct to the best of my belief. FEBRUARY 24 2013 Date Surveyed Signature & Seal of Professional Surveyor Certificate No. Gary L. Jones 7977 BASIN SURVEYS 28244</p>			
<p>N: 582242.1 E: 874059.4 NAD 27</p>		<p>N: 582273.7 E: 876898.8 NAD 27</p>	

DISTRICT I

1625 N. French Dr., Hobbs, NM 88240
Phone (505) 333-6161 Fax: (505) 333-0720

DISTRICT II

811 S. First St., Artesia, NM 88210
Phone (505) 748-1223 Fax: (505) 748-9728

DISTRICT III

1000 Rio Braxos Rd., Aztec, NM 87410
Phone (505) 334-6178 Fax: (505) 334-6170

DISTRICT IV

1220 S. St. Francis Dr., Santa Fe, NM 87505
Phone (505) 476-3465 Fax: (505) 476-3462

State of New Mexico
Energy, Minerals and Natural Resources Department

OIL CONSERVATION DIVISION

1220 South St. Francis Dr.
Santa Fe, New Mexico 87505

Form C-102

Revised August 1, 2011

Submit one copy to appropriate
District Office

WELL LOCATION AND ACREAGE DEDICATION PLAT

☐ AMENDED REPORT

API Number 30-025-41082	Pool Code 33250	Pool Name House; Drinkard
Property Code 39779	Property Name PINOT	Well Number 2
OGRID No. 873	Operator Name APACHE CORPORATION	Elevation 3571'

Surface Location

UL or lot No.	Section	Township	Range	Lot Idn	Feet from the	North/South line	Feet from the	East/West line	County
E	2	20 S	38 E		1850	NORTH	990	WEST	LEA

Bottom Hole Location If Different From Surface

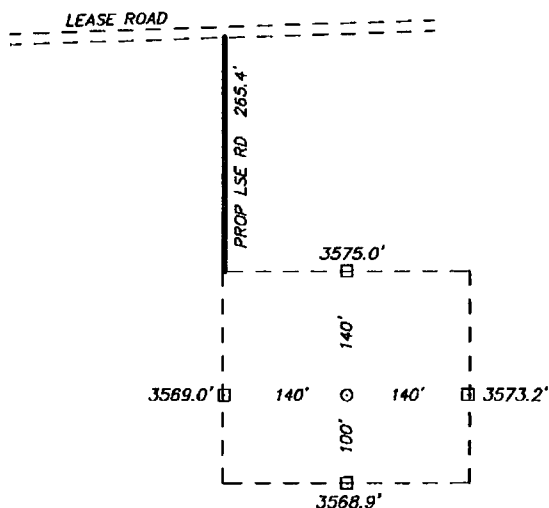
UL or lot No.	Section	Township	Range	Lot Idn	Feet from the	North/South line	Feet from the	East/West line	County

Dedicated Acres 40	Joint or Infill	Consolidation Code	Order No.
------------------------------	-----------------	--------------------	-----------

NO ALLOWABLE WILL BE ASSIGNED TO THIS COMPLETION UNTIL ALL INTERESTS HAVE BEEN CONSOLIDATED
OR A NON-STANDARD UNIT HAS BEEN APPROVED BY THE DIVISION

<p>LOT 4 N: 587409.5 E: 871356.1 NAD 27</p>	<p>LOT 3 N: 587491.5 E: 873899.2 NAD 27</p>	<p>LOT 2</p>	<p>LOT 1 N: 587544.1 E: 870833.4 NAD 27</p>
<p>SURFACE LOCATION Lat - N 32°36'15.67" Long - W 103°07'28.72" NMSPCE - N 585710.1 E 913549.6 (NAD-83) Lat - N 32°36'15.26" Long - W 103°07'27.00" NMSPCE - N 585651.0 E 872367.7 (NAD-27)</p>			
<p>OPERATOR CERTIFICATION I hereby certify that the information contained herein is true and complete to the best of my knowledge and belief, and that this organization either owns a working interest or leased mineral interest in the land including the proposed bottom hole location or has a right to drill this well at this location pursuant to a contract with an owner of such a mineral or working interest, or to a voluntary pooling agreement or a compulsory pooling order heretofore entered by the division. <i>Vicki Brown</i> 3/26/13 Signature Date Printed Name vicki.brown@apachecorp.com Email Address</p>			
<p>SURVEYOR CERTIFICATION I hereby certify that the well location shown on this plat was plotted from field notes of actual surveys made by me or under my supervision, and that the same is true and correct to the best of my belief. FEBRUARY 16 2013 Date Surveyed Signature & Seal of Professional Surveyor Certificate No. Gary L. Jones 7977 BASIN SURVEYS 28244</p>			

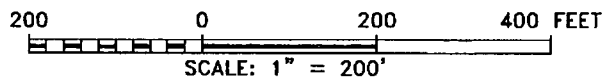
SECTION 2, TOWNSHIP 20 SOUTH, RANGE 38 EAST, N.M.P.M.,
LEA COUNTY, NEW MEXICO.



APACHE CORPORATION
PINOT #2
ELEV. - 3671'

Lat - N 32°36'15.67"
Long - W 103°07'28.72"
NMSPCE - N 585710.1
E 813549.6
(NAD-83)
Lat - N 32°36'15.26"
Long - W 103°07'27.00"
NMSPCE - N 585651.0
E 872367.7
(NAD-27)

WELL IS LOCATED ±7 MILES SOUTH OF HOBBS, NEW MEXICO.



Directions to Location:

FROM MILE MARKER 44 OF HWY 18; GO SOUTH 0.6
MILES TO LEASE ROAD, ON LEASE ROAD GO EAST
0.1 MILES TO PROPOSED LEASE ROAD.

BASIN SURVEYS P.O. BOX 1786 - HOBBS, NEW MEXICO

W.O. Number: 28244 Drawn By: J. SMALL

Date: 02-27-2013 Disk: JMS 28244

APACHE CORPORATION

REF: PINOT #2 / WELL PAD TOPO

THE PINOT #2 LOCATED 1850'
FROM THE NORTH LINE AND 990' FROM THE WEST LINE OF
SECTION 2, TOWNSHIP 20 SOUTH, RANGE 38 EAST,
N.M.P.M., LEA COUNTY, NEW MEXICO.

Survey Date: 02-26-2013 Sheet 1 of 1 Sheets