

Submit To Appropriate District Office
Two Copies
District I
1625 N. French Dr., Hobbs, NM 88240
District II
811 S. First St., Artesia, NM 88210
District III
1000 Rio Brazos Rd., Aztec, NM 87410
District IV
1220 S. St. Francis Dr., Santa Fe, NM 87505

HOBBS OCD
NOV 08 2012
RECEIVED

State of New Mexico
Energy, Minerals and Natural Resources
Oil Conservation Division
1220 South St. Francis Dr.
Santa Fe, NM 87505

Form C-105
Revised August 1, 2011

1. WELL API NO.
30-025-40621
2. Type of Lease
 STATE FEE FED/INDIAN
3. State Oil & Gas Lease No. VB-1184

WELL COMPLETION OR RECOMPLETION REPORT AND LOG

4. Reason for filing:
 COMPLETION REPORT (Fill in boxes #1 through #31 for State and Fee wells only)
 C-144 CLOSURE ATTACHMENT (Fill in boxes #1 through #9, #15 Date Rig Released and #32 and/or #33; attach this and the plat to the C-144 closure report in accordance with 19.15.17.13.K NMAC)

5. Lease Name or Unit Agreement Name
Caza Ridge 14 State
6. Well Number:
3H

7. Type of Completion:
 NEW WELL WORKOVER DEEPENING PLUGBACK DIFFERENT RESERVOIR OTHER

8. Name of Operator
Caza Operating, LLC
9. OGRID
249099

10. Address of Operator
200 N. Loraine, Suite 1550, Midland, Texas 79701
11. Pool name or Wildcat
Antelope Ridge Bone Spring-West

12. Location	Unit Ltr	Section	Township	Range	Lot	Feet from the	N/S Line	Feet from the	E/W Line	County
Surface:	O	14	23-S	34-E		330	S	1980	E	Lea
BH:	B	14	23-S	34-E		4933.37	S	2020.65	E	Lea

13. Date Spudded 6-28-2012
14. Date T.D. Reached 10-4-2012
15. Date Rig Released 10-7-2012
16. Date Completed (Ready to Produce)
17. Elevations (DF and RKB, RT, GR, etc.) 3372'GR

18. Total Measured Depth of Well 15,561
19. Plug Back Measured Depth LC 15,456
20. Was Directional Survey Made? Yes-MWD + Gyro
21. Type Electric and Other Logs Run Gr,CNL,LDT,DLL

22. Producing Interval(s), of this completion - Top, Bottom, Name

23. CASING RECORD (Report all strings set in well)

CASING SIZE	WEIGHT LB./FT.	DEPTH SET	HOLE SIZE	CEMENTING RECORD	AMOUNT PULLED
13-3/8	54.5	750	17-1/2	700 sks-Circulated	
9-5/8	40.0	4952	12-1/4	1960 sks-Circulated	
7-0	29.0	11,590	8-3/4	1415 sks- 4830 toc	
				CBL	

24. LINER RECORD

SIZE	TOP	BOTTOM	SACKS CEMENT	SCREEN
4-1/2	10,319	15,561	230	

25. TUBING RECORD

DEPTH INTERVAL	AMOUNT AND KIND MATERIAL USED
15,407-11,677	43,630 gals 15% HCL NEFE
15,407-11,677	498,074 lbs 20/40 white
15,407-11,677	1,476,700 lbs 20/40 OptiProp G-2

26. Perforation record (interval, size, and number)
15,407-11,677' OA .40" EHD 648 holes.
15,407,15336,15245 (54 holes); 15162,15060,14970 (54 holes); 14894,14794,14670 (54 holes)
14564,14436,14320 (54 holes); 14230,14122,14007 (54 holes); 13906,13806,13687 (54 holes);
13580,13440,13340 (54 holes); 13211,13101,13012 (54 holes); 12910,12802,12702 (54 holes);
12600,12508,12364 (54 holes); 12258,12145,12046 (54 holes); 11954,11837, 11677 (54 holes)

27. ACID, SHOT, FRACTURE, CEMENT, SQUEEZE, ETC.

28. **PRODUCTION**
Date First Production 10-31-2012
Production Method (Flowing, gas lift, pumping - Size and type pump) Flowing
Well Status (Prod. or Shut-in) Prod
Date of Test 11-5-2012
Hours Tested 24
Choke Size 18/64
Prod'n For Test Period
Oil - Bbl 844
Gas - MCF 1063
Water - Bbl. 667
Gas - Oil Ratio 1259/1
Flow Tubing Press. 0
Casing Pressure 2900
Calculated 24-Hour Rate
Oil - Bbl. 844
Gas - MCF 1063
Water - Bbl. 667
Oil Gravity - API - (Corr.) 38°

29. Disposition of Gas (Sold, used for fuel, vented, etc.)
Vented- Gas Hook Up 11-5-2012
30. Test Witnessed By
Billy Kingston- Oil States Tester

31. List Attachments
C-102 Revised, C-104, Directional, Gyro, Schematic, Versa Flex

32. If a temporary pit was used at the well, attach a plat with the location of the temporary pit.

33. If an on-site burial was used at the well, report the exact location of the on-site burial:

Latitude Longitude NAD 1927 1983

I hereby certify that the information shown on both sides of this form is true and complete to the best of my knowledge and belief

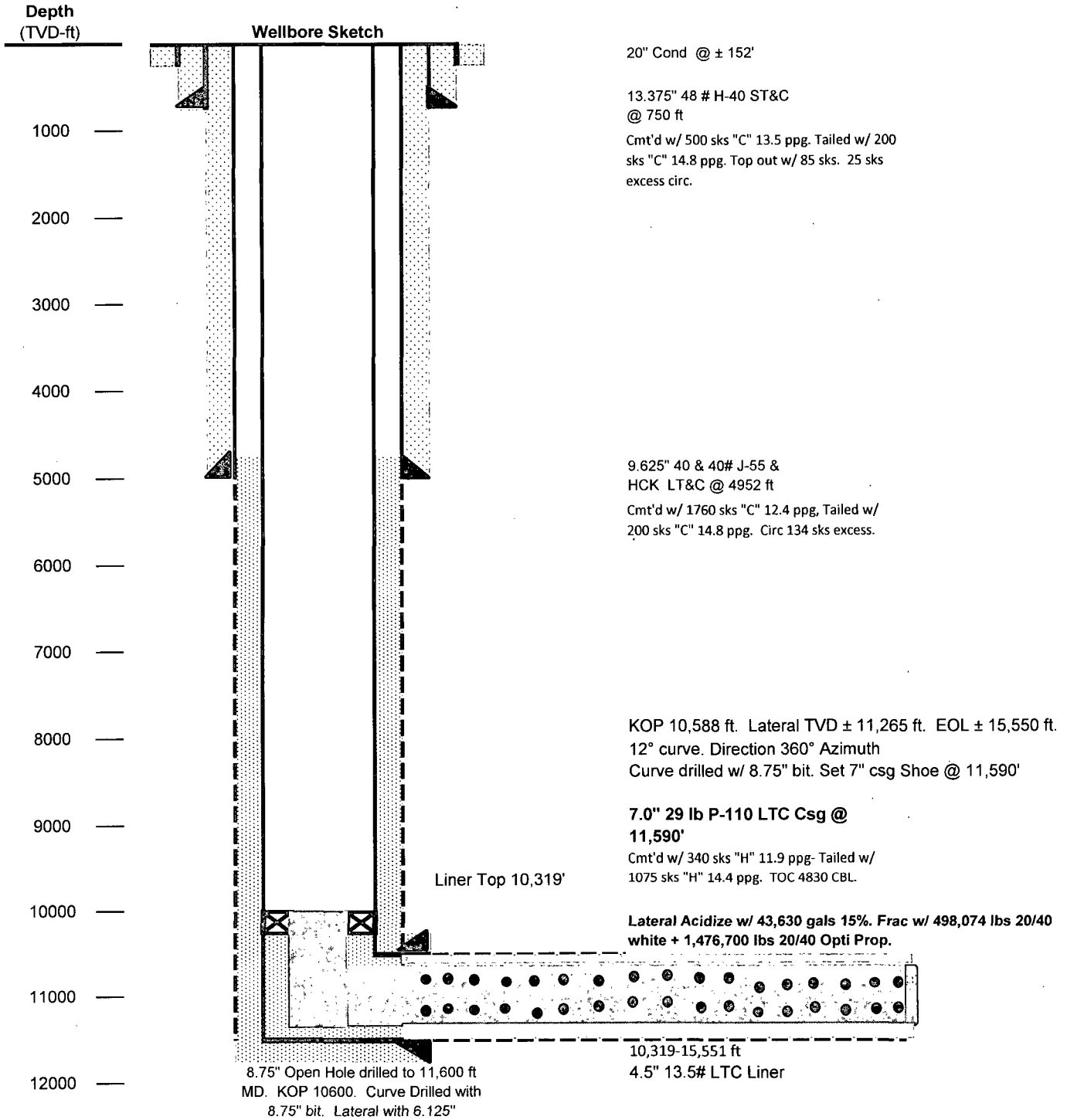
Signature *Richard L. Wright* Printed Name Richard L. Wright Title Operations Manager Date 11/5/2012
E-mail Address rwright@cazapetro.com

KC

APR 08 2013

Caza Ridge 14 State # 3H

Location: Section 14_T23S_R34E_Lea County, New Mexico



VersaFlex Installation

COMPANY CAZA		FIELD 0		LEASE CAZA RIDGE		WELL # 14ST #3H	
COMPANY REP. RICK MASSEY			PARISH / COUNTY LEA		STATE NM	DATE: 1/0/1900	
SIZE, WT, GRADE, & THREAD				TOP @		BOTTOM @	
CASING		7", 29, P110, LTC		0		11590	
LINER 1		4 1/2", 13.5#, P110, 8RD LTC		10,342		15551	
LINER 2		...		0		0	
Work String 1		3.5, 13.3, S135, IF					
Work String 2		3.5, 23.48, S135, IF					
Work String 3		...					
Work String 4		...					
IT	DEPTH	LENGTH	JTS	DESCRIPTION		I.D.	O.D.
8	10319.82	8.96	1	TIEBACK RECEPTICLE(ALLOY) (SAP# 101320406)		5.254	5.870
7	10328.78	11.96	1	VERSAFLEX EXPANDABLE HANGER BDY (BODY) 5" X 7", 29#-32# NEW VAM(PIN) (ALLOY)(SAP#101586396)		4.755	5.884
6	10340.74	1.37	1	ELH CROSSOVER 5" 18# VAM TOP X 4 1/2 13.5# 8RD LTC (SAP# 566129)		3.918	5.604
5	10342.11	5065.44	112	4 1/2 13.5# P-110 8RD LTC LINER		3.920	4.500
4	15407.55	3.35	1	RAPID START INITIATOR (SAP# 101848510)		3.000	5.600
	15410.90	45.43	1	4 1/2 13.5# P-110 8RD LTC		3.920	4.500
3	15456.33	1.10	1	HALLIBURTON LANDING COLLAR (SAP# 101667839) BAFFLE ID: 2.376"		3.883	5.034
	15457.43	45.40	1	4 1/2 13.5# P-110 8RD LTC		3.920	4.500
2	15502.83	0.90	1	HALLIBURTON SSII FLOAT COLLAR (SAP# 100004753)		3.788	5.019
	15503.73	45.44	1	4 1/2 13.5# P-110 8RD LTC		3.920	4.500
1	15549.17	1.83	1	HALLIBURTON SSII FLOAT SHOE(10014027)		4.141	5.049
	15551.00	15551.00		***END OF ASSY***			
BLOCK WGT:		PICK UP WGT:		SLACK OFF WGT:		FORM #:	
		25000		220000		150000	
WGT. ON LATCH:		TYPE LATCH:		PERF:			
NA		NA		NA			
SERVICEMAN:				WGT. & TYPE DRILLING FLUID:			
JUAN CASTILLO				9.2 Water Based			
SERVICE CENTER:		SALES ORDER #:		PAGE		OF	
ODESSA		0		1		1	