

## DISTRICT I

1825 N. FRENCH DR., HOBBS, NM 88240  
Phone: (575) 393-6161 Fax: (575) 393-0720

## DISTRICT II

1301 W. GRAND AVENUE, ARTESIA, NM 88210  
Phone: (575) 748-1283 Fax: (575) 748-0720

## DISTRICT III

1000 RIO BRAZOS RD., AZTEC, NM 87410  
Phone: (505) 334-6176 Fax: (505) 334-6170

## DISTRICT IV

11885 S. ST. FRANCIS DR., SANTA FE, NM 87505  
Phone: (505) 478-3460 Fax: (505) 478-3462State of New Mexico  
Energy, Minerals & Natural Resources Department  
OIL CONSERVATION DIVISION  
11885 SOUTH ST. FRANCIS DR.  
Santa Fe, New Mexico 87505

APR 11 2013

Form C-102

Revised August 1, 2011

Submit one copy to appropriate

RECEIVED

☐ AMENDED REPORT

## WELL LOCATION AND ACREAGE DEDICATION PLAT

API Number 30-025-41099	Pool Code 5130	Pool Name Bell Lake; Bone Spring
Property Code 39818	Property Name ROY BATTY FEDERAL COM	Well Number 1H
GRID No. 229137	Operator Name COG OPERATING, LLC	Elevation 3603.3'

## Surface Location

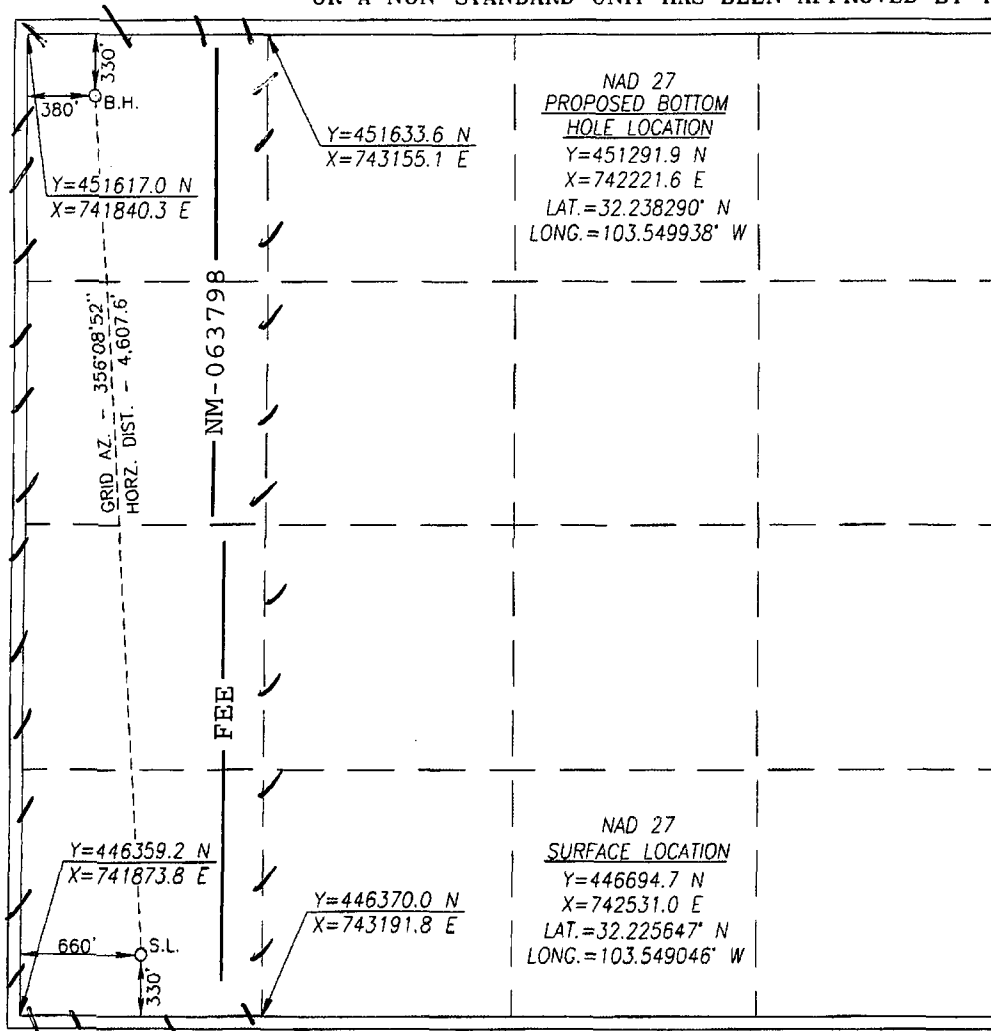
UL or lot No.	Section	Township	Range	Lot Idn	Feet from the	North/South line	Feet from the	East/West line	County
M	11	24-S	33-E		330	SOUTH	660	WEST	LEA

## Bottom Hole Location If Different From Surface

UL or lot No.	Section	Township	Range	Lot Idn	Feet from the	North/South line	Feet from the	East/West line	County
D	11	24-S	33-E		330	NORTH	380	WEST	LEA

Dedicated Acres	Joint or Infill	Consolidation Code	Order No.
160			

NO ALLOWABLE WILL BE ASSIGNED TO THIS COMPLETION UNTIL ALL INTERESTS HAVE BEEN CONSOLIDATED  
OR A NON-STANDARD UNIT HAS BEEN APPROVED BY THE DIVISION



## OPERATOR CERTIFICATION

I hereby certify that the information herein is true and complete to the best of my knowledge and belief, and that this organization either owns a working interest or unleased mineral interest in the land including the proposed bottom hole location or has a right to drill this well at this location pursuant to a contract with an owner of such mineral or working interest, or to a voluntary pooling agreement or a compulsory pooling order heretofore entered by the division.

*Melanie J. Parker* 2/5/13  
Signature Date

*Melanie J. Parker*  
Printed Name

*mparker@concho.com*  
E-mail Address

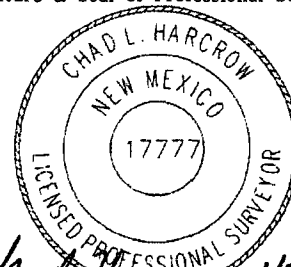
## SURVEYOR CERTIFICATION

I hereby certify that the well location shown on this plat was plotted from field notes of actual surveys made by me or under my supervision, and that the same is true and correct to the best of my belief.

JANUARY 28, 2013

Date of Survey

Signature &amp; Seal of Professional Surveyor



*Chad Harcrow* 1/30/13  
Certificate No. CHAD HARCROW 17777

W.O. # 13-41

DRAWN BY: VD

APR 15 2013