

Submit 1 Copy To Appropriate District
Office
District I - (575) 393-6161
1625 N. French Dr., Hobbs, NM 88240
District II - (575) 748-1283
811 S. First St., Artesia, NM 88210
District III - (505) 334-6178
1000 Rio Brazos Rd., Aztec, NM 87410
District IV - (505) 476-3460
1220 S. St. Francis Dr., Santa Fe, NM
87505

State of New Mexico
Energy, Minerals and Natural Resources

Form C-103
Revised August 1, 2011

HOBS OGD RECEIVED APR 12 2013 OIL CONSERVATION DIVISION 1220 South St. Francis Dr. Santa Fe, NM 87505		WELL API NO. 30-025-41068
		5. Indicate Type of Lease STATE <input checked="" type="checkbox"/> FEE <input type="checkbox"/>
		6. State Oil & Gas Lease No.
SUNDRY NOTICES AND REPORTS ON WELLS (DO NOT USE THIS FORM FOR PROPOSALS TO DRILL OR TO DEEPEN OR PLUG BACK TO A DIFFERENT RESERVOIR. USE "APPLICATION FOR PERMIT" (FORM C-101) FOR SUCH PROPOSALS.)		7. Lease Name or Unit Agreement Name Dead End 15 State
		8. Well Number 1
1. Type of Well: Oil Well <input checked="" type="checkbox"/> Gas Well <input type="checkbox"/> Other <input type="checkbox"/>		9. OGRID Number 6137
2. Name of Operator Devon Energy Production Company, L.P.		10. Pool name or Wildcat Mescalero Escarpe; Bone Spring
3. Address of Operator 333 W. Sheridan Avenue, Oklahoma City, Oklahoma 73102 (405) 552-7970		
4. Well Location Unit Letter <u>G</u> : <u>1650</u> feet from the <u>North</u> line and <u>2285</u> feet from the <u>East</u> line Section <u>15</u> Township <u>18S</u> Range <u>33E</u> NMPM <u>L</u> , County <u>New Mexico</u>		
11. Elevation (Show whether DR, RKB, RT, GR, etc.)		

12. Check Appropriate Box to Indicate Nature of Notice, Report or Other Data

NOTICE OF INTENTION TO:

PERFORM REMEDIAL WORK ☐ PLUG AND ABANDON ☐
TEMPORARILY ABANDON ☐ CHANGE PLANS ☐
PULL OR ALTER CASING ☐ MULTIPLE COMPL ☐
DOWNHOLE COMMINGLE ☐

OTHER: Change to original ☒

SUBSEQUENT REPORT OF:

REMEDIAL WORK ☐ ALTERING CASING ☐
COMMENCE DRILLING OPNS. ☐ P AND A ☐
CASING/CEMENT JOB ☐

OTHER: ☐

13. Describe proposed or completed operations. (Clearly state all pertinent details, and give pertinent dates, including estimated date of starting any proposed work). SEE RULE 19.15.7.14 NMAC. For Multiple Completions: Attach wellbore diagram of proposed completion or recompletion.

Devon Energy Production Company, LP respectfully requests to change the Mescalero Escarpe; Bone Spring to the Corbin; Delaware, West.

See attached: Drilling Plan
Revised C-102

I hereby certify that the information above is true and complete to the best of my knowledge and belief.

SIGNATURE Erin Workman TITLE Regulatory Compliance Associate DATE 04/11/13

Type or print name Erin Workman E-mail address: Erin.Workman@dvn.com PHONE: (405) 552-7970

For State Use Only

APPROVED BY: [Signature] TITLE Petroleum Engineer DATE APR 15 2013
Conditions of Approval (if any):

APR 15 2013

APR 12 2013

District I
1625 N. French Dr., Hobbs, NM 88240
Phone: (575) 393-6161 Fax: (575) 393-0720

District II
811 S. First St., Artesia, NM 88210
Phone: (575) 748-1283 Fax: (575) 748-9720

District III
1000 Rio Brazos Road, Aztec, NM 87410
Phone: (505) 334-6178 Fax: (505) 334-6170

District IV
1220 S. St. Francis Dr., Santa Fe, NM 87505
Phone: (505) 476-3460 Fax: (505) 476-3462

State of New Mexico

Energy, Minerals & Natural Resources Department

RECEIVED

OIL CONSERVATION DIVISION

1220 South St. Francis Dr.

Santa Fe, NM 87505

Form C-102

Revised August 1, 2011

Submit one copy to appropriate

District Office

☒ AMENDED REPORT

WELL LOCATION AND ACREAGE DEDICATION PLAT

¹ API Number 30-025-41068	² Pool Code 13195	³ Pool Name Corbin; Delaware, West
⁴ Property Code 39775	⁵ Property Name DEAD END 15 STATE	
⁷ OGRID No. 6137	⁸ Operator Name DEVON ENERGY PRODUCTION COMPANY, L.P.	
		⁶ Well Number 1
		⁹ Elevation 3925.4

¹⁰ Surface Location

UL or lot no.	Section	Township	Range	Lot Idn	Feet from the	North/South line	Feet from the	East/West line	County
G	15	18 S	33 E		1650	NORTH	2285	EAST	LEA

¹¹ Bottom Hole Location If Different From Surface

UL or lot no.	Section	Township	Range	Lot Idn	Feet from the	North/South line	Feet from the	East/West line	County

¹² Dedicated Acres 40	¹³ Joint or Infill	¹⁴ Consolidation Code	¹⁵ Order No.

No allowable will be assigned to this completion until all interests have been consolidated or a non-standard unit has been approved by the division.

<p>S89°23'24"W 2636.55 FT</p> <p>NW CORNER SEC. 15 LAT. = 32.7548377°N LONG. = 103.6595009°W NMSP EAST (FT) N = 639000.90 E = 748490.15</p>		<p>S89°10'47"W 2616.22 FT</p> <p>N CORNER SEC. 15 LAT. = 32.7548685°N LONG. = 103.6509251°W NMSP EAST (FT) N = 639028.96 E = 751126.55</p>		<p>S89°10'47"W 2616.22 FT</p> <p>NE CORNER SEC. 15 LAT. = 32.7549248°N LONG. = 103.6424156°W NMSP EAST (FT) N = 639066.42 E = 753742.51</p>	
<p>S00°12'58"E 2636.29 FT</p>		<p>1650'</p>		<p>N00°08'49"W 2640.11 FT</p>	
<p>SW CORNER SEC. 15 LAT. = 32.7403459°N LONG. = 103.6595453°W NMSP EAST (FT) N = 633728.37 E = 748510.05</p>		<p>DEAD END "15" STATE #1 ELEV. = 3925.4' LAT. = 32.7503410°N (NAD83) LONG. = 103.6498676°W NMSP EAST (FT) N = 637383.86 E = 751462.28</p>		<p>SE CORNER SEC. 15 LAT. = 32.7404112°N LONG. = 103.6424165°W NMSP EAST (FT) N = 633786.06 E = 753776.67</p>	
<p>S00°12'58"E 2636.29 FT</p>		<p>2285'</p>		<p>N00°35'40"W 2640.39 FT</p>	
<p>NOTE: LATITUDE AND LONGITUDE COORDINATES ARE SHOWN USING THE NORTH AMERICAN DATUM OF 1983 (NAD83) IN DEGREES MINUTES DECIMAL SECONDS FORMAT. BASIS OF BEARING IS NEW MEXICO STATE PLANE EAST (NAD83) COORDINATES MODIFIED TO SURFACE.</p>					
<p>N89°22'20"E 2633.47 FT</p>		<p>2633.47 FT</p>		<p>N89°22'20"E 2633.47 FT</p>	

¹⁷ OPERATOR CERTIFICATION

I hereby certify that the information contained herein is true and complete to the best of my knowledge and belief, and that this organization either owns a working interest or unleased mineral interest in the land including the proposed bottom hole location or has a right to drill this well at this location pursuant to a contract with an owner of such a mineral or working interest, or to a voluntary pooling agreement or a compulsory pooling order heretofore entered by the division.

Erin Workman 04-11-13
Signature Date

Erin Workman, Regulatory Assoc
Printed Name

Erin.workman@dmn.com
E-mail Address

¹⁸ SURVEYOR CERTIFICATION

I hereby certify that the well location shown on this plat was plotted from field notes of actual surveys made by me or under my supervision, and that the same is true and correct to the best of my belief.

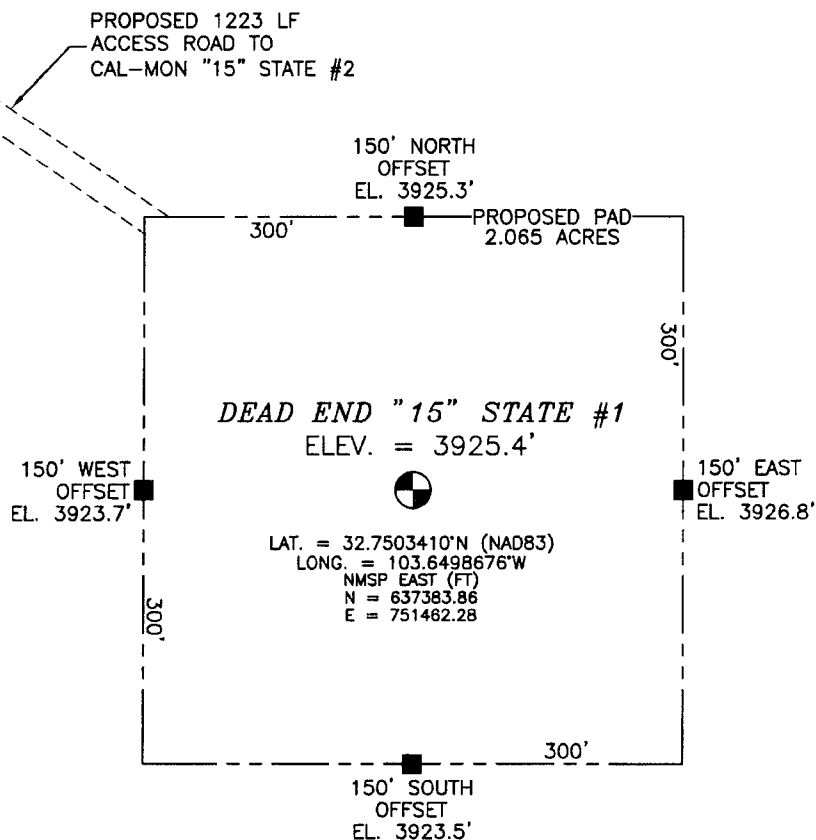
MARCH 6, 2013
Date of Survey

Antonio F. Jaramillo
Signature and Seal of Professional Surveyor

Certificate Number: FIDUCIA F. JARAMILLO, PLS 12797
SURVEY NO. 1668

SECTION 15, TOWNSHIP 18 SOUTH, RANGE 33 EAST, N.M.P.M.
LEA COUNTY, STATE OF NEW MEXICO

NOTE: LATITUDE AND LONGITUDE COORDINATES ARE SHOWN USING THE NORTH AMERICAN DATUM OF 1983 (NAD83) IN DEGREES, MINUTES AND DECIMAL SECONDS FORMAT. BASIS OF BEARING IS NEW MEXICO STATE PLANE EAST (NAD83) COORDINATES MODIFIED TO SURFACE.



010 50 100 200

SCALE 1" = 100'

DIRECTIONS TO LOCATION

FROM THE INTERSECTION OF STATE HIGHWAY 529 AND CR 125 (QUERRECHO) GO NORTHWEST ON STATE HIGHWAY 529 FOR APPROX. 2.4 MILES. GO SOUTHWEST ON CALICHE LEASE ROAD APPROX. 1.15 MILES. CONTINUE SOUTH APPROX. 0.23 OF A MILE. CONTINUE EAST APPROX. 0.11 OF A MILE TO SOUTHWEST CORNER OF PAD (CAL-MON "15" STATE #2). FOLLOW ROAD LATHS SOUTHEAST APPROX. 1400 FT TO LOCATION.

DEVON ENERGY PRODUCTION COMPANY, L.P.
DEAD END "15" STATE #1
LOCATED 1650 FT. FROM THE NORTH LINE
AND 2285 FT. FROM THE EAST LINE OF
SECTION 15, TOWNSHIP 18 SOUTH,
RANGE 33 EAST, N.M.P.M.
LEA COUNTY, STATE OF NEW MEXICO

MARCH 6, 2013

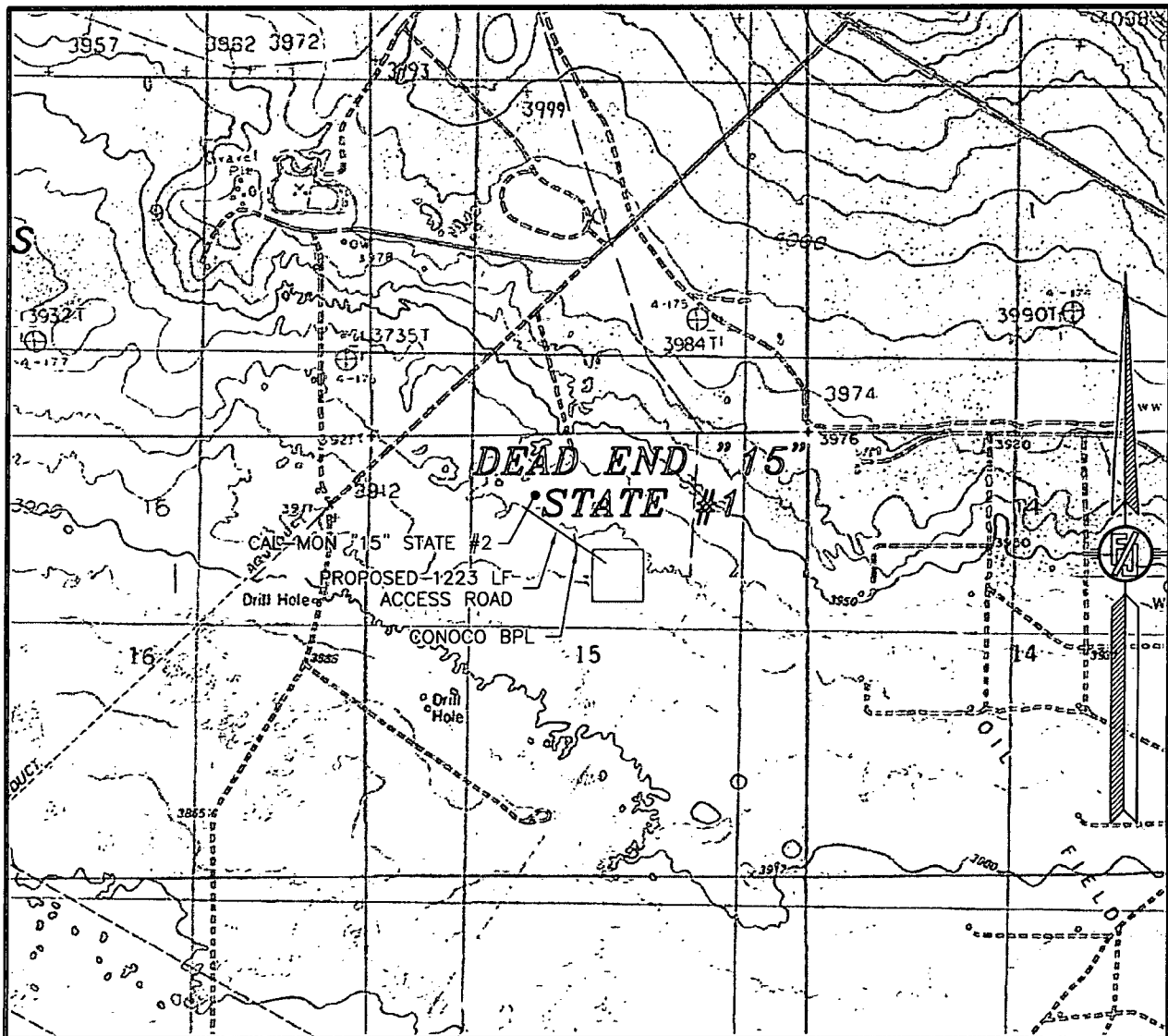
SURVEY NO. 1668

MADRON SURVEYING, INC.

301 SOUTH CANAL
(575) 234-3341

CARLSBAD, NEW MEXICO

SECTION 15, TOWNSHIP 18 SOUTH, RANGE 33 EAST, N.M.P.M.
LEA COUNTY, STATE OF NEW MEXICO
LOCATION VERIFICATION MAP



USGS QUAD MAP:
LAGUNA GATUNA NW

NOT TO SCALE

DEVON ENERGY PRODUCTION COMPANY, L.P.

DEAD END "15" STATE #1

LOCATED 1650 FT. FROM THE NORTH LINE
AND 2285 FT. FROM THE EAST LINE OF
SECTION 15, TOWNSHIP 18 SOUTH,
RANGE 33 EAST, N.M.P.M.
LEA COUNTY, STATE OF NEW MEXICO

MARCH 6, 2013

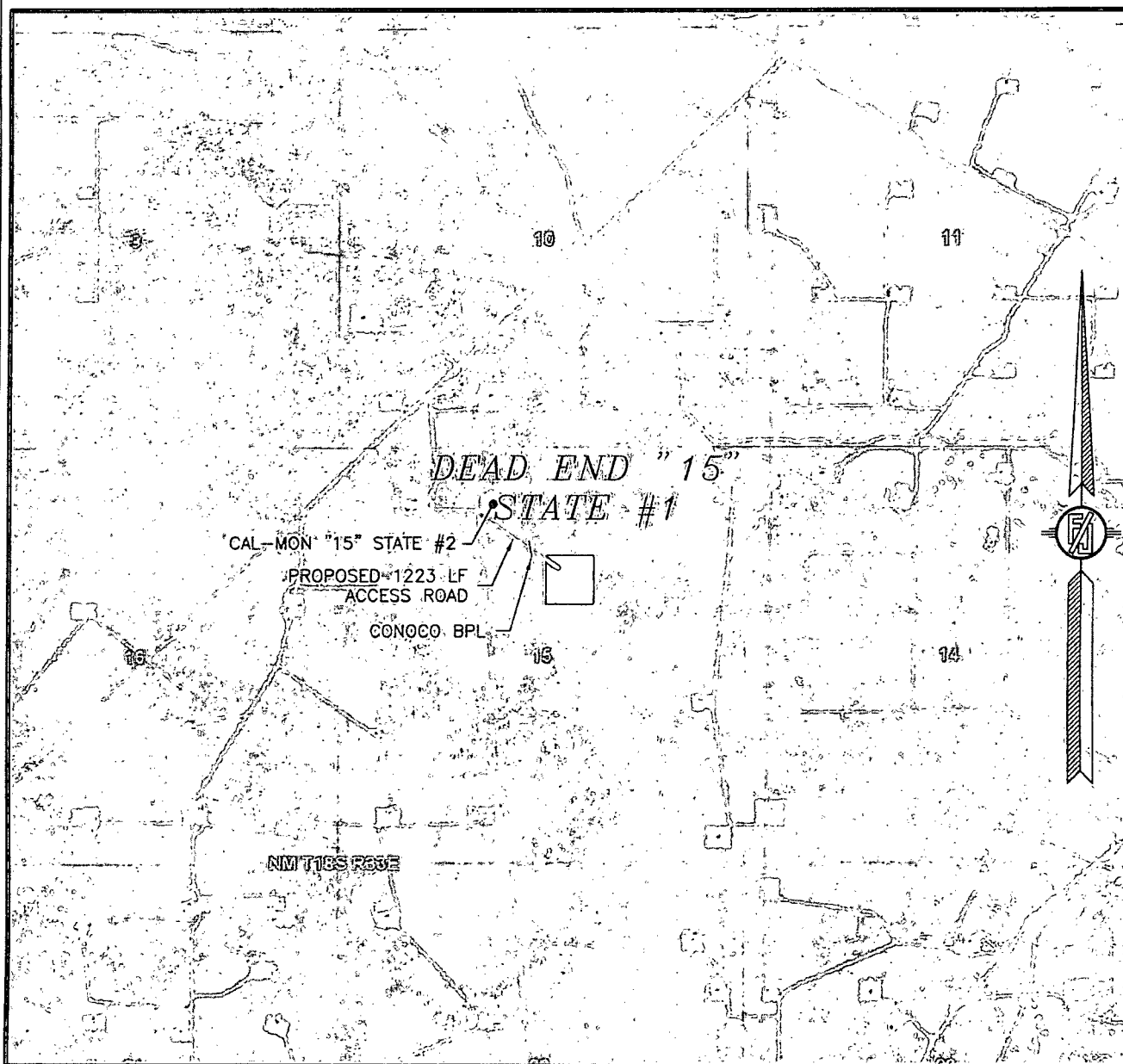
SURVEY NO. 1668

MADRON SURVEYING, INC. 301 SOUTH CANAL (575) 234-3341 CARLSBAD, NEW MEXICO

The map is a technical drawing of a geographical area, likely a coastal region in California. It features a grid of latitude and longitude lines. Key labels include 'MALJAMAR OIL FIELD' in the upper left, 'CORBIN OIL FIELD' in the center, and 'CAPRO OIL FIELD' in the lower right. A prominent diagonal line runs from the upper left towards the lower right, labeled 'DEAD END 13' CALIF. STATE #1'. Other labels include 'PUERTO RECHO' on the left, 'Ridge' on the right, and 'Quarry' at the bottom. The map also shows various roads, including 'Highway 13', and geographical features like 'Ridge' and 'Quarry'. A compass rose is visible in the bottom right corner.

MADRON SURVEYING, INC. 301 SOUTH CANAL CARLSBAD, NEW MEXICO
(575) 234-3341

SECTION 15, TOWNSHIP 18 SOUTH, RANGE 33 EAST, N.M.P.M.
LEA COUNTY, STATE OF NEW MEXICO
AERIAL PHOTO



NOT TO SCALE
AERIAL PHOTO:
GOOGLE EARTH
MARCH 2012

DEVON ENERGY PRODUCTION COMPANY, L.P.

DEAD END "15" STATE #1

LOCATED 1650 FT. FROM THE NORTH LINE
AND 2285 FT. FROM THE EAST LINE OF
SECTION 15, TOWNSHIP 18 SOUTH,
RANGE 33 EAST, N.M.P.M.
LEA COUNTY, STATE OF NEW MEXICO

MARCH 6, 2013

SURVEY NO. 1668

MADRON SURVEYING, INC. 301 SOUTH CANAL (575) 234-3341 CARLSBAD, NEW MEXICO

Dead End 15 State 1 – APD DRILLING PLAN
KKS 04-05-2013

Casing Program

<u>Hole Size</u>	<u>Hole Interval</u>	<u>OD Csg</u>	<u>Casing Interval</u>	<u>Weight</u>	<u>Collar</u>	<u>Grade</u>
12-1/4"	0 – 1,350	9-5/8"	0 – 1,350	48#	STC	H-40
8-3/4"	1,350 - 5,500	5-1/2"	0 – 5,500	17#	LTC	P-110

Note: only new casing will be utilized.

Mud Program:

<u>Depth</u>	<u>Mud Wt.</u>	<u>Visc.</u>	<u>Fluid Loss</u>	<u>Type System</u>
0 – 1,350	8.4 – 9.0	30 – 34	N/C	FW
1,350 – 5,500	9.8 – 10.0	28 – 32	N/C	Brine

Pressure Control Equipment:

The BOP system used to drill the intermediate hole will consist of a 13-5/8" Double Ram and Annular preventer. The BOP system will be tested as per BLM Onshore Oil and Gas Order No. 2, a 3M system will be installed and tested prior to drilling out the surface casing shoe.

The BOP system used to drill the production hole will consist of a 13-5/8" Double Ram and Annular preventer. The BOP system will be tested as per BLM Onshore Oil and Gas Order No. 2 a 3M system will be installed prior to drilling out the intermediate casing shoe.

The pipe rams will be operated and checked each 24 hour period and each time the drill pipe is out of the hole. These tests will be logged in the daily driller's log. A 2" kill line and 3" choke line will be incorporated into the drilling spool below the ram BOP. In addition to the rams and annular preventer, additional BOP accessories include a kelly cock, floor safety valve, choke lines, and choke manifold rated at 3,000 psi WP.

Cementing Program (cement volumes based on Surface 100% excess, Intermediate on 50% excess and at least 25% excess on the Production.)

9-5/8" Intermediate

Lead: 1020 sacks (65:35) Class C Cement:Poz (Fly Ash): + 5% bwow Sodium Chloride + 0.125 lbs/sack Poly-E-Flake + 6% bwoc Bentonite + 70.9% Fresh Water, 12.9 ppg

Yield: 1.85 cf/sk

TOC @ surface

Tail: 360 sacks Class C Cement + 0.125 lbs/sack Poly-E-Flake + 63.5% Water, 14.8 ppg

Yield: 1.33 cf/sk

5-1/2" Production

Lead: 420 sacks (65:35) Class H Cement:Poz (Fly Ash) + 6% bwoc Bentonite + 0.2% bwoc HR-601 + 74.1% Fresh Water, 12.5 ppg

Yield: 1.95 cf/sk

Tail: 780 sacks (50:50) Class H Cement:Poz (Fly Ash) + 1 lb/sk Sodium Chloride + 0.5% bwoc HALAD-344 + 0.4% bwoc CFR-3 + 0.1% bwoc HR-601 + 2% bwoc Bentonite + 58.8% Fresh Water, 14.5 ppg

Yield: 1.22 cf/sk

TOC @ 850 ft

TOC for All Strings:

Surface:	0
Intermediate:	0
Production:	850 ft

ACTUAL CEMENT VOLUMES WILL BE ADJUSTED BASED ON FLUID CALIPER AND CALIPER LOG DATA.