

DISTRICT I  
1625 N. French Dr., Hobbs, NM 88240  
Phone (575) 393-6161 Fax: (575) 393-0720

DISTRICT II  
1301 W. Grand Avenue, Artesia, NM 88210  
Phone (575) 748-1283 Fax: (575) 748-9720

DISTRICT III  
1000 Rio Brazos Rd., Aztec, NM 87410  
Phone (505) 334-6179 Fax: (505) 334-6170

DISTRICT IV  
1220 S. St. Francis Dr., Santa Fe, NM 87505  
Phone (505) 476-3460 Fax: (505) 476-3462

HOBBS OCD

APR 15 2013

RECEIVED

State of New Mexico  
Energy, Minerals and Natural Resources Department

OIL CONSERVATION DIVISION  
1220 South St. Francis Dr.  
Santa Fe, New Mexico 87505

Form C-102  
Revised August 1, 2011

Submit one copy to appropriate  
District Office

WELL LOCATION AND ACREAGE DEDICATION PLAT

☐ AMENDED REPORT

API Number <b>30-025-41116</b>	Pool Code <b>29710 and 29730</b>	Pool Name <b>Hardy; Blinebry and Hardy; Drinkard</b>
Property Code <b>31471</b>	Property Name <b>STATE F-1</b>	Well Number <b>35</b>
GRID No. <b>217817</b>	Operator Name <b>CONOCO PHILLIPS</b>	Elevation <b>3497'</b>

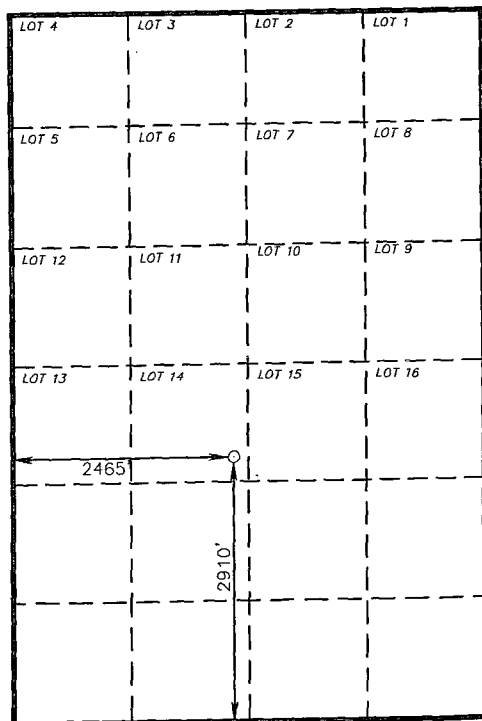
Surface Location

UL or lot No.	Section	Township	Range	Lot Idn	Feet from the	North/South line	Feet from the	East/West line	County
LOT 14	1	21 S	36 E		2910	SOUTH	2465	WEST	LEA

Bottom Hole Location If Different From Surface

UL or lot No.	Section	Township	Range	Lot Idn	Feet from the	North/South line	Feet from the	East/West line	County
Dedicated Acres <b>40</b>	Joint or Infill	Consolidation Code	Order No.						

NO ALLOWABLE WILL BE ASSIGNED TO THIS COMPLETION UNTIL ALL INTERESTS HAVE BEEN CONSOLIDATED  
OR A NON-STANDARD UNIT HAS BEEN APPROVED BY THE DIVISION



SCALE 1" = 2000'

**SURFACE LOCATION**  
Lat - N 32°30'31.28"  
Long - W 103°13'10.26"  
NMSPCE- N 550585.683  
E 884696.413  
(NAD-83)  
Lat - N 32°30'30.84"  
Long - W 103°13'08.56"  
NMSPCE- N 550524.415  
E 843512.410  
(NAD-27)

OPERATOR CERTIFICATION

I hereby certify that the information contained herein is true and complete to the best of my knowledge and belief, and that this organization either owns a working interest or unleased mineral interest in the land including the proposed bottom hole location or has a right to drill this well at this location pursuant to a contract with an owner of such a mineral or working interest, or to a voluntary pooling agreement or a compulsory pooling order heretofore entered by the division.

*Susan B. Maunder* 4/8/13  
Signature Date

*Susan B. Maunder*  
Printed Name  
*Susan.B.maunder@conocophillips.com*  
Email Address

SURVEYOR CERTIFICATION

I hereby certify that the well location shown on this plat was plotted from field notes of actual surveys made by me or under my supervision, and that the same is true and correct to the best of my belief.

*GARY L. JONES*  
Date Surveyed  
Signature & Seal of  
Professional Surveyor

Certificate No. Gary L. Jones 7977

BASIN SURVEYS 25425

APR 17 2013