

DISTRICT I
1625 N. French Dr., Hobbs, NM 88240
Phone (575) 393-5161 Fax: (575) 393-0720

DISTRICT II
1301 W. Grand Avenue, Artesia, NM 88210
Phone (575) 746-1283 Fax: (575) 746-1720

DISTRICT III
1000 Rio Brazos Rd., Aztec, NM 87410
Phone (505) 334-6178 Fax: (505) 334-8170

DISTRICT IV
1220 S. St. Francis Dr., Santa Fe, NM 87505
Phone (505) 476-3460 Fax: (505) 476-3462

HOBBS OCD

APR 15 2013

RECEIVED

State of New Mexico
Energy, Minerals and Natural Resources Department

Form C-102
Revised August 1, 2011

Submit one copy to appropriate
District Office

OIL CONSERVATION DIVISION

1220 South St. Francis Dr.
Santa Fe, New Mexico 87505

WELL LOCATION AND ACREAGE DEDICATION PLAT

☐ AMENDED REPORT

API Number 30-025-41117	Pool Code 29710 and 29730	Pool Name Hardy; Blinebry and Hardy; Drinkard
Property Code 31471	Property Name STATE F-1	Well Number 38
OGRID No. 217817	Operator Name CONOCO PHILLIPS	Elevation 3501'

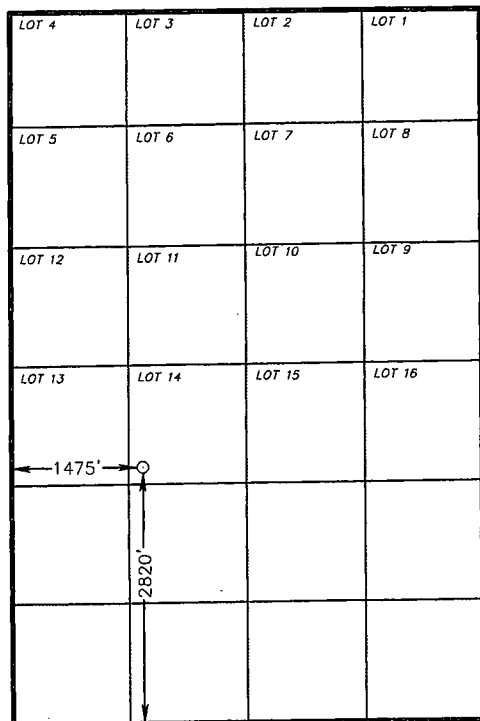
Surface Location

UL or lot No.	Section	Township	Range	Lot Idn	Feet from the	North/South line	Feet from the	East/West line	County
LOT 14	1	21 S	36 E		2820	SOUTH	1475	WEST	LEA

Bottom Hole Location If Different From Surface

UL or lot No.	Section	Township	Range	Lot Idn	Feet from the	North/South line	Feet from the	East/West line	County
Dedicated Acres 40	Joint or Infill	Consolidation Code	Order No.						

NO ALLOWABLE WILL BE ASSIGNED TO THIS COMPLETION UNTIL ALL INTERESTS HAVE BEEN CONSOLIDATED
OR A NON-STANDARD UNIT HAS BEEN APPROVED BY THE DIVISION



SCALE 1" = 2000'

SURFACE LOCATION
Lot - N 32°30'30.35"
Long - W 103°13'21.82"
NMSPCE- N 550480.718
E 883707.601
(NAD-83)

Lot - N 32°30'29.90"
Long - W 103°13'20.12"
NMSPCE- N 550419.388
E 842523.585
(NAD-27)

OPERATOR CERTIFICATION

I hereby certify that the information contained herein is true and complete to the best of my knowledge and belief, and that this organization either owns a working interest or unleased mineral interest in the land including the proposed bottom hole location or has a right to drill this well at this location pursuant to a contract with an owner of such a mineral or working interest, or to a voluntary pooling agreement or a compulsory pooling order heretofore entered by the division.

Susan B. Maunder 4/8/13
Signature Date

Susan B. Maunder
Printed Name

Susan.B.Maunder@conocophillips.com
Email Address

SURVEYOR CERTIFICATION

I hereby certify that the well location shown on this plat was plotted from field notes of actual surveys made by me or under my supervision, and that the same is true and correct to the best of my belief.

NOVEMBER 18 2011
Date Surveyed
Signature & Seal of
Professional Surveyor 7977

W.O. No. 25427

Certificate No. Gary L. Jones 7977

BASIN SURVEYS 25427

APR 17 2013