

Submit 1 Copy To Appropriate District Office
District I - (575) 393-6161
1625 N. French Dr., Hobbs, NM 88240
District II - (575) 748-1283
811 S. First St., Artesia, NM 88210
District III - (505) 334-6178
1000 Rio Brazos Rd., Aztec, NM 87410
District IV - (505) 476-3460
1220 S. St. Francis Dr., Santa Fe, NM 87505

State of New Mexico
Energy, Minerals and Natural Resources
OIL CONSERVATION DIVISION
1220 South St. Francis Dr.
Santa Fe, NM 87505

Form C-103
Revised August 1, 2011

SUNDRY NOTICES AND REPORTS ON WELLS (DO NOT USE THIS FORM FOR PROPOSALS TO DRILL OR TO DEEPEN OR PLUG BACK TO A DIFFERENT RESERVOIR. USE "APPLICATION FOR PERMIT" (FORM C-101) FOR SUCH PROPOSALS.)		WELL API NO. 30-025-38002
1. Type of Well: Oil Well <input type="checkbox"/> Gas Well <input type="checkbox"/> Other <input checked="" type="checkbox"/> INJECTION		5. Indicate Type of Lease STATE <input checked="" type="checkbox"/> FEE <input type="checkbox"/>
2. Name of Operator CHEVRON U.S.A. INC.		6. State Oil & Gas Lease No.
3. Address of Operator 15 SMITH ROAD, MIDLAND, TEXAS 79705		7. Lease Name or Unit Agreement Name CENTRAL VACUUM UNIT
4. Well Location Unit Letter A: 82 feet from the NORTH line and 1186 feet from the EAST line Section 36 Township 17-S Range 34-E NMPM County LEA		8. Well Number 342
11. Elevation (Show whether DR, RKB, RT, GR, etc.)		9. OGRID Number 4323
		10. Pool name or Wildcat VACUUM GRAYBURG SAN ANDRES

12. Check Appropriate Box to Indicate Nature of Notice, Report or Other Data

NOTICE OF INTENTION TO:

PERFORM REMEDIAL WORK ☐ PLUG AND ABANDON ☐
TEMPORARILY ABANDON ☐ CHANGE PLANS ☐
PULL OR ALTER CASING ☐ MULTIPLE COMPL ☐
DOWNHOLE COMMINGLE ☐

SUBSEQUENT REPORT OF:

REMEDIAL WORK ☐ ALTERING CASING ☐
COMMENCE DRILLING OPNS. ☐ P AND A ☐
CASING/CEMENT JOB ☐

OTHER:

OTHER IMPROVE PERFORMANCE & RTI

13. Describe proposed or completed operations. (Clearly state all pertinent details, and give pertinent dates, including estimated date of starting any proposed work). SEE RULE 19.15.7.14 NMAC. For Multiple Completions: Attach wellbore diagram of proposed completion or recompletion.

PLEASE FIND ATTACHED REPORTS FOR WORK DONE FROM 03-07-12 THROUGH 03-23-13.

ALSO FIND ATTACHED, ORIGINAL CHART & COPY OF CHART RUN ON 03-23-2013.

RETURN TO INJECTION

Spud Date:

Rig Release Date:

WFX - 822

I hereby certify that the information above is true and complete to the best of my knowledge and belief.

SIGNATURE

Denise Pinkerton

TITLE: REGULATORY SPECIALIST

DATE 04-05-2013

Type or print name: DENISE PINKERTON

E-mail address: leakejd@chevron.com

PHONE: 432-687-7375

APPROVED BY:

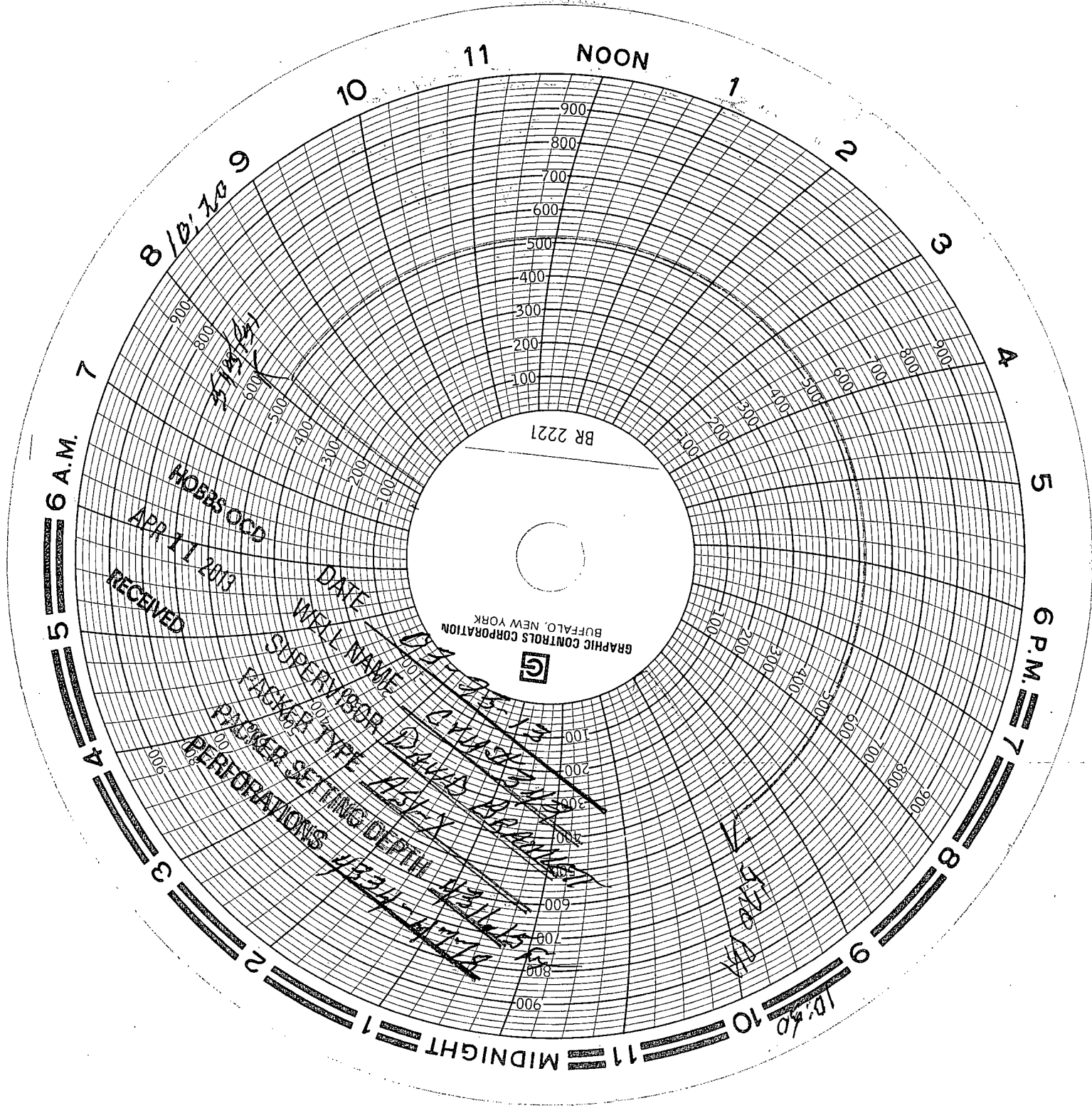
[Signature]

TITLE: DIST. MGR

DATE 4-17-2013

Conditions of Approval (if any):

APR 18 2013



BR 2221

DATE 4/11/13

WELL NAME HOBBS OGD

SUPERVISOR DAVID BRADY

PACKER TYPE AS-EX

PACKER SETTING DEPTH 477.8

PERFORATIONS 477.8-477.8

RECEIVED

APR 11 2013

St Qy 30025 38002
VISA A-36 17534
82 N 1186 E

RT1



Summary Report

Major Rig Work Over (MRWO)

Stimulation

Job Start Date: 3/7/2013

Job End Date: 3/23/2013

Well Name CENTRAL VACUUM UNIT 342		Lease Central Vacuum Unit	Field Name Vacuum	Business Unit Mid-Continent/Alaska	
Ground Elevation (ft) 3,995.00	Original RKB (ft) 4,008.00	Current RKB Elevation		Mud Line Elevation (ft)	Water Depth (ft)

Report Start Date: 3/7/2013

Com

MAKE OUT AND DISCUSS JSA (TENENT # 7-----E-COLORS AND HAZARD WHEEL-----DISCUSS SPOTTING IN AND RIGGING UP PULLING UNIT, SPOTTING IN HYDROWALK, SETTING PIPE RACKS, UNLOADING TUBING, SPOTTING IN AND RIGGING UP REVERSE UNIT

SET MATTING BOARD, SPOT IN PULLING UNIT, SPOT IN PIPE RACKS, AND UNLOAD TUBING

CREW SHUT DOWN AND EAT LUNCH

SPOT IN HYDROWALK, RIG UP PULLING UNIT, SPOT IN REVERSE PIT AND PUMP, BRINE TANK, ACID TANK AND FLOW BACK TANK

RIG UP PRO WIRELINE CHOKE MANIFOLD AND FLOWBACK EQUIPMENT FROM WELL TO FLOW BACK TANK, SECURE LOCATION

TUBING 900 PSI, OPEN WELL TO FLOW BACK TANK THRU CHOKE MANIFOLD, FLOWED DOWN TO 400 PSI, SECURE LOCATION, SHUT DOWN OVERNIGHT

CREW TRAVEL FROM LOCATION TO YARD

Report Start Date: 3/8/2013

Com

CREW TRAVEL FROM YARD TO LOCATION

MAKE OUT AND DISCUSS JSA---(TENENT # 8 ADDRESS ABNORMAL CONDITIONS)-----E-COLORS AND HAZARD WHEEL, FLOWING DOWN WELL, PUMPING BRINE TO KILL, NIPPLING DOWN WELL HEAD, NIPPLING UP BOP, RUNNING PACKER, TESTING BOP, PULLING PACKER, RIGGING UP SCANNERS, TRIPPING OUT OF HOLE, TRIPPING IN HOLE, RELEASING PACKER

TUBING 900 PSI, OPEN WELL TO FLOWBACK TANK THRU CHOKE MANIFOLD, WORK CHOKE FULL OPEN, OPEN THRY 2" VALVES, WELL BLED DOWN TO 300 PSI, SHUT WELL IN, PRESSURE BUILT TO 800 IN 15 MIN

ROUSTABOUT CREW RIGGED DOWN THE FLOW LINE

PUMP TUBING CAPACITY PLUS 10 BBLs, TUBING PRESSURE WAS 000 PSI

SPOT IN AND RIG UP PRO SLICKLINE UNIT

RIH WITH GAUGE RING TO PACKER, PULLING BACK UP IT DRUG EXTREAMLY HARD, HAD A PARIFFINY SUBSTANCE ON THE GAUGE RING, RIH TO SET A 1.50" BLANKING PLUG IN PROFILE NIPPLE AND COULD NOT GET DOWN PAST 2000' DUE TO A ASPHALTEN / PARIFFIN TYPE PRODUCT IN THE TUBING, CALLED LARRY BIRKELBACK AND DISCUSSED PUMPING 500 GALLONS OF XYLEAN TO CLEAN UP RESIDUE, WILL PUMP IN THE AM, SECURE LOCATION, SHUT DOWN OVERNIGHT

CREW TRAVEL FROM LOCATION TO YARD

NPT TIME

Report Start Date: 3/9/2013

Com

CREW TRAVEL FROM YARD TO LOCATION

MAKE OUT AND DISCUSS JSA---(TENENT # 9, FOLLOW WRITTEN PROCEDURES FOR HIGH RISK OR UNUSUAL SITUATIONS)----PUMPING XYLEAN, SETTING BLANKING PLUG, NIPPLING DOWN WELL HEAD, NIPPLING UP BOP AND FLOOR

STANDBY UNTILL LOBO TRUCKING GETS XYLEAN LOADED AND TRAVEL TO LOCATION

RIG UP LOBO KILL TRUCK

PUMP 500 GALLONS (12 BARRELS) XYLEAN AND FOLLOWED WITH 5 BBLs OF WATER

LET XYLEAN SOAK TO DISOLVE ASPHALTINS

RIG UP PRO WORELINE UNIT

RIH WITH GAUGE RING AND TAG PACKER, POOH, RIH WITH BLANKING PLUG AND SET IN PROFILE NIPPLE, POOH

PRESSURE TEST PLUG TO 500 PSI, HELD GOOD, RELEASE PRESSURE

NIPPLE DOWN WELL HEAD

NIPPLE UP BOP

RIG UP FLOOR, STAIRS, HANDRAILS, TONGS AND SLIPS

RELEASE ON AND OFF TOOL OFF OF PACKER, PULL 1 JOINT

MAKE UP RBP ON TUBING

RIH 1 JOINT AND SET RBP, TEST BOP

PULL RBP, SECURE LOCATION, SHUT DOWN FOR THE WEEKEND

CREW TRAVEL FROM LOCATION TO YARD

Report Start Date: 3/11/2013

Com

CREW TRAVEL FROM YARD TO LOCATION

MAKE OUT AND DISCUSS JSA (TENENT # 1---OPERATE WITHIN DESIGN & ENVIROMENTAL LIMITS---E-COLORS AND HAZARD WHEEL), CIRCULATING, TRIPPING OUT OF HOLE, CHANGING RAMS, RUNNING PACKER AND TESTING, PULLING PACKER, TIH WITH WORK STRING

CIRCULATE HOLE WITH BRINE WATER

RIG UP HYDROSTATIC PIPE TESTERS

TOOH AND SCAN AND TALLY 2-3/8" FIBERLINED PRODUCTION TUBING AND STAND IN DERRICK

RIG DOWN HYDROSTATIC PIPE TESTERS

CHANGE OUT RAMS IN BOP TO 2-7/8"

RIH WITH 5-1/2" RBP 1 JOINT AND SET



Summary Report

Major Rig Work Over (MRWO)

Stimulation

Job Start Date: 3/7/2013

Job End Date: 3/23/2013

Well Name CENTRAL VACUUM UNIT 342		Lease Central Vacuum Unit	Field Name Vacuum	Business Unit Mid-Continent/Alaska	
Ground Elevation (ft) 3,995.00	Original RKB (ft) 4,008.00	Current RKB Elevation		Mud Line Elevation (ft)	Water Depth (ft)

Com

PRESSURE TEST BOP RAMS AND BLINDS

PULL RBP

TIH WITH OVERSHOT AND 2-7/8" WORK STRING, LEAVE HANGING 15' ABOVE PACKER, SECURE LOCATION, SHUT DOWN OVERNIGHT

CREW TRAVEL FROM LOCATION TO YARD

Report Start Date: 3/12/2013

Com

CREW TRAVEL FROM YARD TO LOCATION

MAKE OUT AND DISCUSS JSA (TENENT # 2---OPERATE IN A SAFE AND CONTROLLED CONDITION,---E-COLORS AND HAZARD WHEEL) LATCH ONTO PACKER AND ATTEMPT TO RELEASE, TOO, TIH, PULL PLUG, TOO, WITH PACKER TIH WITH DRILL COLLARS AND BIT, CLEAN OUT FILL

LATCH ONTO PACKER AND ATTEMPT TO RELEASE, COULD NOT RELEASE, PRESSURE BACKSIDE TO 500 PSI, STILL COULD NOT RELEASE PACKER

RELEASE OFF OF ON AND OFF TOOL, TOO, REMOVE 4' PERFORATED SUB

TIH WITH OVERSHOT AND LATCH ONTO PACKER

WAIT ON SLICKLINE TRUCK TO FINISH ON THE

HOLD TAILGATE SAFETY / PROCEDURE MEETING WITH SLICKLINE HANDS

SPOT IN AND RIG UP DIAMOND "D" SLICKLINE TRUCK

RIH AND PUCH A HOLE IN THE BLANKING PLUG AND THEN PULL PLUG

RIG DOWN SLICKLINE TRUCK

RELEASE INJECTION PACKER AND LET FLUID EQUILIZE

TOOH WITH 25 STANDS, DRAGGING EXTREMLY HARD, SECURE LOCATION, SHUT DOWN OVERNIGHT

CREW TRAVEL FROM LOCATION TO YARD

Report Start Date: 3/13/2013

Com

CREW TRAVEL FROM YARD TO LOCATION

MAKE OUT AND DISCUSS JSA (TENENT # 3---ENSURE SAFETY DEVICES ARE IN PLACE AND FUNCTIONING---E-COLORS AND HAZARD WHEEL) KILLING WELL, TOO, TIH WITH BIT, CLEANING OUT FILL

TUBING 420 PSI, CASING 320 PSI, PUMP 25 BBLs OF BRINE WATER DOWN TUBING AND 15 BBLs DOWN CASING TO KILL WELL

TOOH WITH WORK STRING AND PACKER

TIH WITH 4 3/4" BIT, 4 3/4" STRING MILL AND 2-7/8" WORK STRING TO 4820'

PULL ABOVE PERFS

CREW SHUT DOWN AND EAT LUNCH, CALLED BAKER HUGHES AND ADVISED WE WOULD BE READY FOR STIMGUNS IN THE AM, THEY ADVISED THAT A PROGRAM HAD TO BE RUN FIRST AND THEY NEEDED TO VISIT WITH THE CHEVRON ENGINEER TO DO THIS PROGRAM, CALLED LARRY BIRKELBACH AND VISITED WITH HIM ABOUT THE PROGRAM, HE WILL CALL THE ENGINEER, BAKER WILL ADVISE WHEN THEY CAN START PERFORATING

WAIT FOR CONFORMATION ABOUT PERFORATING, CARRIED AS NPT

CREW TRAVEL FROM LOCATION TO YARD

Report Start Date: 3/14/2013

Com

CREW ON STANDBY

Report Start Date: 3/15/2013

Com

STAND BY FOR BAKER ATLAS TO GET STIM GUNS READY

Report Start Date: 3/18/2013

Com

CREW TRAVEL FROM YARD TO LOCATION

MAKE OUT AND DISCUSS JSA (TENENT # 8---ADDRESS ABNORMAL CONDITIONS---E-COLORS AND HAZARD WHEEL) KILLING WELL, TOO, RIGGING UP WIRELINE, PERFORATING, RIGGING DOWN WIRELINE, TIH WITH KILL STRING

TUBING 120 PSI, CASING 700 PSI, BLOW WELL DOWN TO FLOWBACK TANK

PUMP 30 BBLs OF BRINE WATER TO KILL WELL

TOOH AND WELL KICKED, STAB TIW VALVE

PUMP 30 BBLs TO KILL WELL

FINISH TOO

HOLD TAILGATE SAFETY MEETING WITH BAKER ATLAS WIRELINE CREW, DISCUSS RIGGING UP AND PERFORATING

SPOT IN AND RIG UP BAKER ATLAS WIRELINE

RIH WITH GAUGE RING, POOH, RIH AND PERFORATE FROM (1) 4583' TO 4593'----- (2) 4571' TO 4575'----- (3) 4436' TO 4440'---- (4) 4429' TO 4433', REHEAD WIRELINE, PERFORATE FROM (5)---4390' TO 4416'

LAY DOWN LUBRICATOR, SECURE WELL, SHUT DOWN OVERNIGHT

CREW TRAVEL FROM LOCATION TO YARD



Summary Report

Major Rig Work Over (MRWO)

Stimulation

Job Start Date: 3/7/2013

Job End Date: 3/23/2013

Well Name CENTRAL VACUUM UNIT 342		Lease Central Vacuum Unit	Field Name Vacuum	Business Unit Mid-Continent/Alaska	
Ground Elevation (ft) 3,995.00	Original RKB (ft) 4,008.00	Current RKB Elevation		Mud Line Elevation (ft)	Water Depth (ft)

Report Start Date: 3/19/2013

Com

Travel Time for Rig Crew

JSA Safety Meeting. Discussed Tenet # 9, Hazard ID Wheel # 9, E Colors #9. Discussed the days job procedure, RU Baker Wireline equipment, suspended loads, explosives on location, hazards of Wireline equipment, TIH & TOH w/ Wireline

RU Lubricator & PU Perforating Gun.

TIH & correlate Collars & perforate from 4378 ft to 4382 ft & TOH w/ Perforating Guns

TIH & correlate collars & shoot Perfs from 4370 ft to 4374 ft & TOH w/ perforating Guns

TIH & correlate collars & shoot Perfs from 4362 ft to 4366 ft. TOH w/ Perforating Gun.

TIH & correlate collars & shoot Perfs from 4349 ft to 4353 ft & TOH w/ perforating gun.

TIH & correlate collars & shoot Perfs from 4334 ft to 4338 ft TOH w/ Perforating Gun.

RD Baker Atlas Lubricator & W/LK equipment

PU Peak 5 1/2" Pkr & RBP

TIH w/ Pkr & RBP to 4610 ft & Set RBP

Test RBP to 500 psi & hold for 5 min

TOH to 4224 ft & Set Peak Crest Pkr & Test Annulus to 500 psi

Debrief Meeting discussed the days operations.

Travel Time for Rig Crew

Report Start Date: 3/20/2013

Com

Travel Time for Rig Crew

JSA Safety Meeting. Discussed Tenet # 10, hazard Id # 10, E Colors # 10. Discussed the days job procedure, Acid Job, Pressure, lifting iron. suspended loads, emergency shower trailer operation, proper PPE for working w/ Acid. Petro Plex did JSA also covering the same items.

RU Petro Plex Acidizing equipment.

Start Inj Rate w/ Fresh Water @ 3064 psi @ 6.7 BPM w/ 5 bbls Fresh Water & switched to 15% HCL Acid. Pumped 100 bbls of 15% HCL Acid w/ Avg Pressure of 3430 PSI. SD & loaded Ball Injector w/ 140 Bio Balls.

Continued w/ Acid Job @ 7 BPM @ 3405 PSI Avg Pressure dropping 10 Bio Balls equally for 200 BBLS of Acid. When balls hit Perfs there was apparent change in pressure or rate.

Total of 374 bbls of 15% HCL Acid pumped & 33.5 bbls Fresh Water, no apparent Ball action during the job. ISIP: 1994 PSI, 5min: 1856 PSI, 10 min: 1773 PSI, 15 min: 1678 PSI. Avg Pressure: 3300PSI, Avg Rate 7 BPM, Max Pressure: 3499 PSI. Total Load 408 bbls.

Open well & found to have no pressure. RU Swab equipment.

Start swabbing back the 408 bbls of Acid & Flush. Swabb back about 25 bbls of load.

Started flowing well w/ 250 psi & started getting about 20 % Oil Cut. 95 bbls of load back still getting 20 % Oil Cut samples.

Debrief meeting, discussed Acid Job & flowing back acid job.

Travel Time for Rig Crew

Report Start Date: 3/21/2013

Com

Travel Time for Rig Crew

JSA Safety Meeting. Discussed Tenet #1, Hazard ID #1, E Colors #1. Discussed the days job procedure, flowing back well, pressure, be aware of fluid volumes flowing back, be aware of possible Acid Fumes & H2S from flow back.

900 psi on well. Open up well & started flowing back Acid Job Volumes of 208 bbls left. Had CO2 for the 1st hr of blowback & then started getting fluid back. 1st sample was mostly oil. Flowed back a total of 65 bbls for the day, fluid appears to be clean w/o Acid contamination.

RD Flow back line & RU Schlumberger Reverse Pump & pump 10# Brine Down Tbg to Kill Well w/ 25 bbls @ 300 psi @ 3BPM.

Release Pkr & TIH to 4314 ft & set Pkr.

Pressure test the Annulus to 500 psi & hold for 30 min.

TIH & latch on to RBP & release RBP.

TOH w/ Peak RBP & Pkr Laying down 2 7/8" W S Tubing.

RU & Pmp down Tbg w/ 10# Brine Water to kill well. 3BPM @ 250 psi.

TOH w/ 2 7/8" W S Tbg laying down. Install TIW Valve w/ Nigfht Cap. Close BOP Pipe Rams & lock. SIFN EOT: 1953 ft.

Debrief Meeting discussed the days activities & all went well today.

Travel Time for Rig Crew

Report Start Date: 3/22/2013

Com

Travel Time for Rig Crew

JSA Safety Meeting. Discussed Tenet #2, Hazard ID #2, E Colors #2. Discussed the days job procedure, TOH laying down Tbg, rotating equipment, pressure, well kill, vehicle idling, laying down tools, PU tools, TIH w/ Tbg & Pkr. Circ Pkr Fluid & testing Casing.

500 psi on Tbg & 200 psi on Casing. Blow down Annulus & Tbg. Circulate well w/ 10# Brine & well killed w/ Hydro Static. Held weekly Safety Drills.

TOH Laying down 2 7/8" W S Tbg & peak Pkr & RBP.



Summary Report

Major Rig Work Over (MRWO)
Stimulation

Job Start Date: 3/7/2013

Job End Date: 3/23/2013

Well Name CENTRAL VACUUM UNIT 342		Lease Central Vacuum Unit	Field Name Vacuum	Business Unit Mid-Continent/Alaska	
Ground Elevation (ft) 3,995.00	Original RKB (ft) 4,008.00	Current RKB Elevation		Mud Line Elevation (ft)	Water Depth (ft)

Com

JSA Safety Meeting. Discussed TIH w/ 2 3/8" Fiber Lined Tbg & Tuboscope Inspection & Stabbing & make up Process. discussed the hazards of TIH w/ Tbg, rotating equipment, crowded Rig Floor, escape routes.

Change Out 2 7/8" Pipe Rams & Elevators for 2 3/8" equipment.

TIH 1 jt 2 3/8" Tbg w/ TS RBP & Test BOP 2 3/8" Pipe Rams to 250 psi Low & 500 psi High & held Ok.

TOH w/ Test RBP

PU 5 1/2" AS-1X Injection Packer w/ 1.43" ID Profile Nipple w/ T-2 On/Off Tool & start in hole w/ 2 3/8" Fiber Lined Tbg installing new seals.

Set & test AS-1X Inj Packer @4311 ft to 500 psi & held for 15 min & OKay. Bleed off pressure & release from Pkr

Circulate wellbore w/113 bbls Packer Fluid @ 2 BPM @ 600 psi down the 2 3/8" TBG. Latch back up to Pkr w/ On & Off Tool. Close TIW Vlive install Night Cap, BOP Pipe Rams closed & locked.

Debrief Meeting discussed the days job activities & performance of Safety Drills

Travel Time for Rig Crew

Report Start Date: 3/23/2013

Com

Travel Time for Rig Crew

Safety Meeting on "Idling Policy" & Acute Angle Rescue Policy & Procedure at FMT Office

JSA Safety Meeting. Discussed Tenet #3, Hazard ID #3, E Colors #3. Discussed the days job procedure, Idling Policy, Acute Angle Rescue, pressure testing, ND BOP & NU Tree, crush points, suspended loads. Hazards when RD Pulling Unit, moving nequipment.

Test Annulus to 500 psi Pre MIT & held for 30 min.

JSA Safety Meeting w/ D & L ND BJOP stack w/ D & L Meters.

NU Tree to wellhea w/ RX Seal Ring.

Pressure up to 500 PSI on Annulus & Chart for 30 min for MIT Test.

Pressure up on Tbg & Pump Out Plug & blow plug @ 0400 psi. & establish Injection rate @ 2 BPM @ 450 psi. & SD

RD Pulling Unit ready to move on Monday. Tree Pressure Tested to 3000 PSI by Vetco Gray.

Debrief Meeting discussed the days events, well completed before high wind could effect RD of Pulling Unit

Travel Time for Rig Crew