

8. Ancillary Facilities:

- A. No camps or airstrips to be constructed.

9. Well Site Layout:

- A. Exhibit "D" shows location and rig layout.
- C. Mud pits in the closed circulating system will be steel pits and the cuttings will be stored in steel containment pits.
- D. Cuttings will be stored in steel pits until they are hauled to a state-approved disposal facility.
- E. If the well is a producer, those areas of the location not essential to production facilities will be reclaimed and seeded per BLM requirements.

10. Plans for Restoration of Surface:

Rehabilitation of the location will start in a timely manner after all drilling operations cease. The type of reclamation will depend on whether the well is a producer or a dry hole.

Drainage systems, if any, will be reshaped to the original configuration with provisions made to alleviate erosion. These may need to be modified in certain circumstances to prevent inundation of the location's pad and surface facilities. After the area has been shaped and contoured, topsoil from the spoil pile will be placed over the disturbed area to the extent possible. Revegetation procedures will comply with BLM standards.

If the well is a dry hole, the pad and road area will be recountoured to match the existing terrain. Topsoil will be spread to the extent possible. Revegetation will comply with BLM standards.

Should the well be a producer, those areas of the location not essential to production facilities and operations will be reclaimed and seeded per BLM requirements. Please see Production Facilities Layout Diagram, exhibit D-1.

11. Other Information

- A. Topography consists of a sloping plane with loose tan sands. Vegetation is mainly yucca, mesquite and shin oak.
- B. The wellsite is on surface owned by Department of the Interior, Bureau of Land Management. The land is used mainly for farming, cattle ranching, recreational use, and oil and gas production.
- C. In lieu of an archaeological survey report, Cimarex will be submitting an MOA application for this well pad and access road since they are within the MOA boundary.
- D. There are no known dwellings within 1½ miles of this location.

Operator Certification Statement

Hallertau 4 Federal 2H
Cimarex Energy Co. of Colorado
Lot 3, Section 4
T26S-R32E, Lea County, NM

Operator's Representative

Cimarex Energy Co. of Colorado
600 N Marienfeld St Ste 600
Midland Tx 79701
Office Phone: (432) 571-7800

CERTIFICATION: I hereby certify that I, or someone under my direct supervision, have inspected the drill site and access route proposed herein; that I am familiar with the conditions which currently exist; that I have full knowledge of state and Federal laws applicable to this operation; that the statements made in this APD package are, to the best of my knowledge, true and correct; and that the work associated with the operations proposed herein will be performed in conformity with this APD package and the terms and conditions under which it is approved. I also certify that I, or the company I represent, am responsible for the operations conducted under this application. These statements are subject to the provisions of 18 U.S.C. 1001 for the filing of false statements.

Executed this 1st day of October, 2012

NAME: 
Paula Brunson

TITLE: Regulatory Analyst

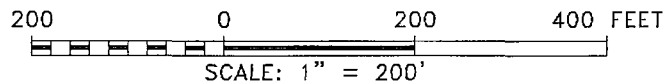
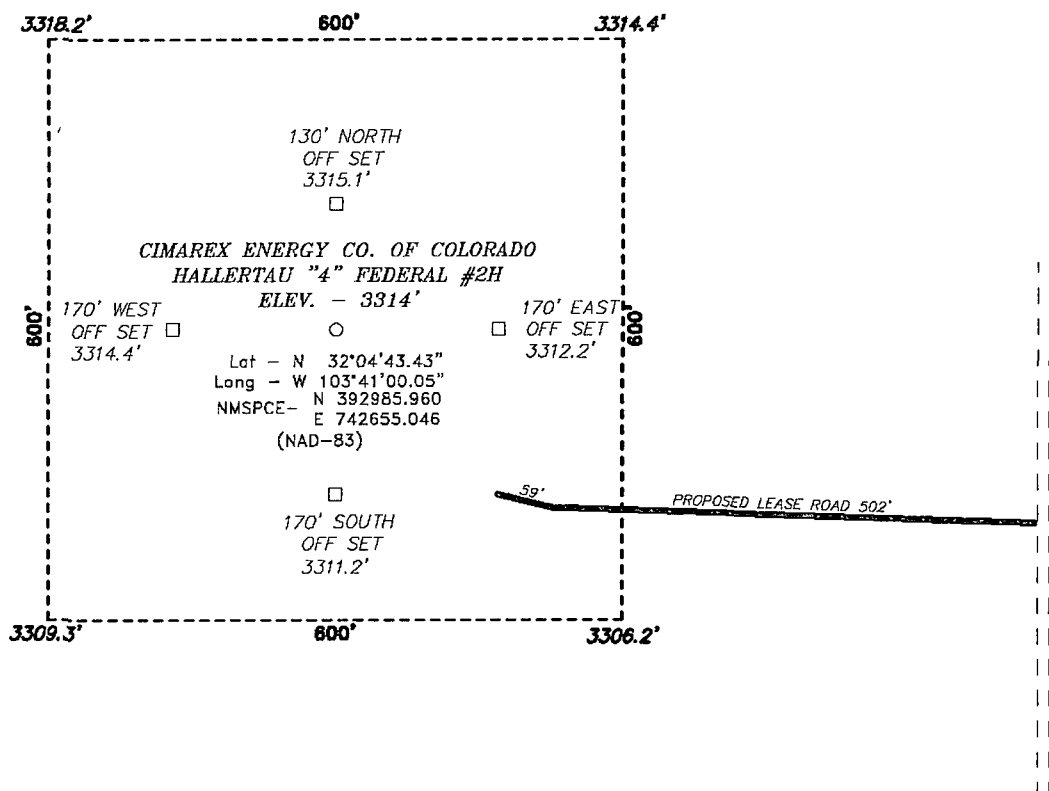
ADDRESS: 600 N Marienfeld St Ste 600
Midland Tx 79701

TELEPHONE: Office Phone: (432) 571-7800

EMAIL: pbrunson@cimarex.com

Field Representative: Same as above

SECTION 4, TOWNSHIP 26 SOUTH, RANGE 32 EAST, N.M.P.M.,
LEA COUNTY, NEW MEXICO.



Directions to Location:

FROM THE JUNCTION OF HWY 128 AND CO. RD. J1,
GO SOUTH ON J1 FOR 10.0 MILES TO LEASE ROAD,
ON LEASE ROAD GO WEST 0.6 MILES TO LEASE
ROAD, ON LEASE ROAD TO SOUTH 0.2 MILES TO
PROPOSED LEASE ROAD.

CIMAREX ENERGY CO. OF COLORADO

REF: HALLERTAU "4" FEDERAL #2H / WELL PAD TOPO

THE HALLERTAU "4" FEDERAL #2H LOCATED 330'

FROM THE SOUTH LINE AND 1650' FROM THE WEST LINE OF

SECTION 4, TOWNSHIP 26 SOUTH, RANGE 32 EAST,

N.M.P.M., LEA COUNTY, NEW MEXICO.

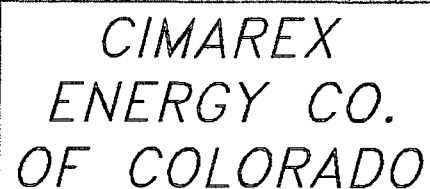
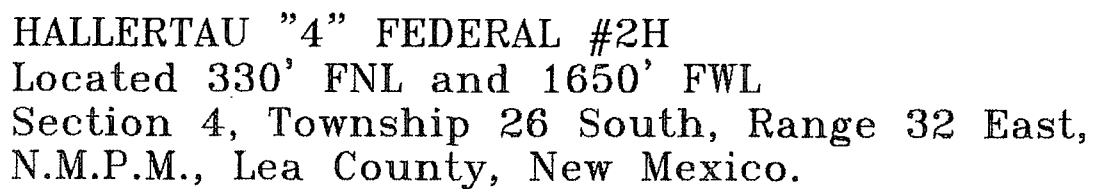
BASIN SURVEYS P.O. BOX 1786-HOBBS, NEW MEXICO

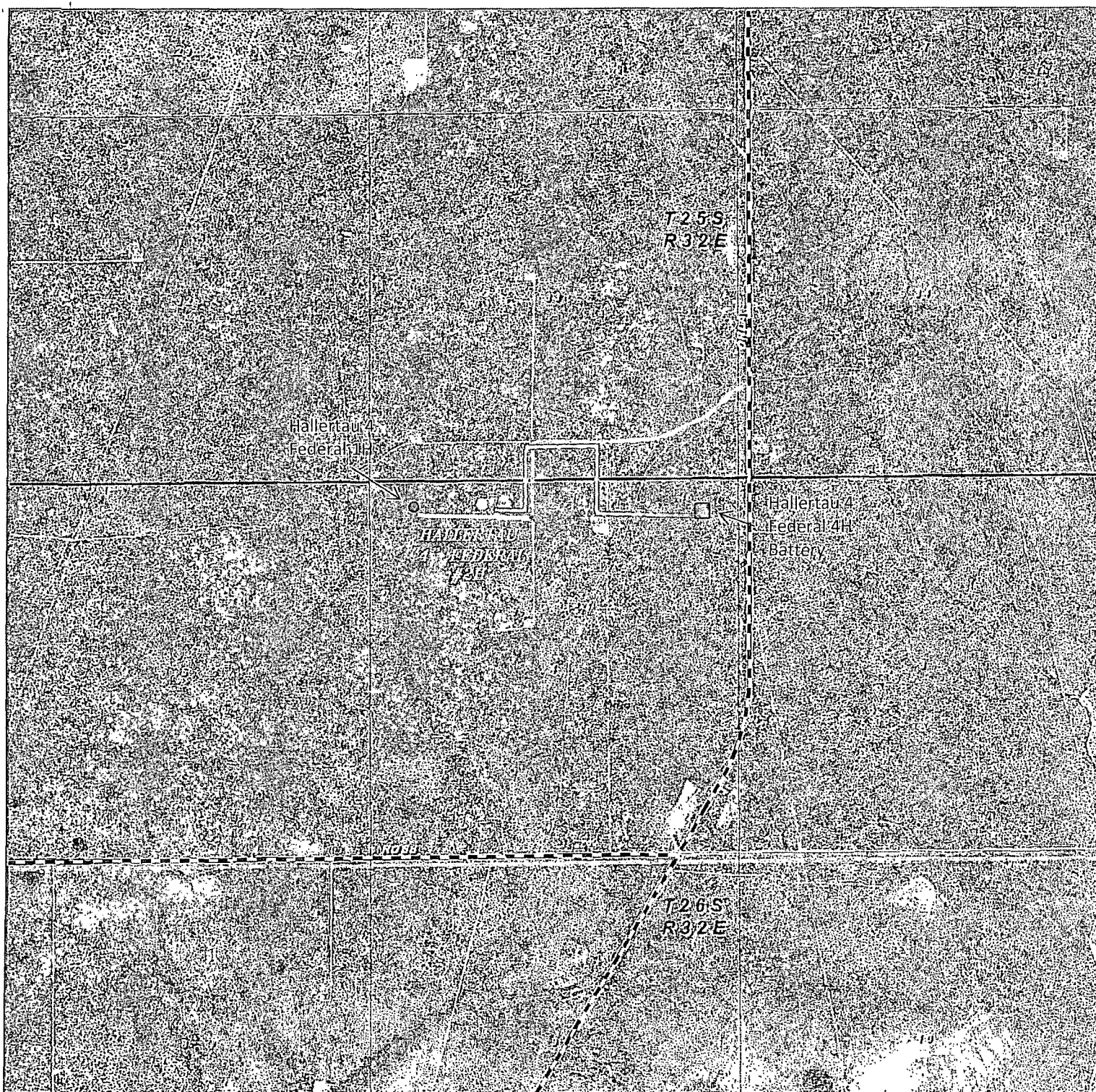
W.O. Number: 24491 Drawn By: J. SMALL

Date: 05-04-2011 Disk: JMS 24491

Survey Date: 05-02-2011 Sheet 1 of 1 Sheets

CIMAREX
ENERGY CO.
OF COLORADO


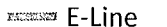




HALLERTAU "4" FEDERAL #2H

Located 330' FNL and 1650' FWL

Section 4, Township 26 South, Range 32 East,
N.M.P.M., Lea County, New Mexico.

- ☐ Battery
-  Flowline
-  E-Line

basin
surveys
focused on excellence
in the oilfield

P.O. Box 1786
1120 N. West County Rd.
Hobbs, New Mexico 88241
(575) 393-7316 - Office
(575) 392-2206 - Fax
basinsurveys.com

W.O. Number: JMS 24491

Scale: 1" = 2000'

YELLOW TINT - USA LAND
BLUE TINT - STATE LAND
NATURAL COLOR - FEE LAND

CIMAREX
ENERGY CO.
OF COLORADO

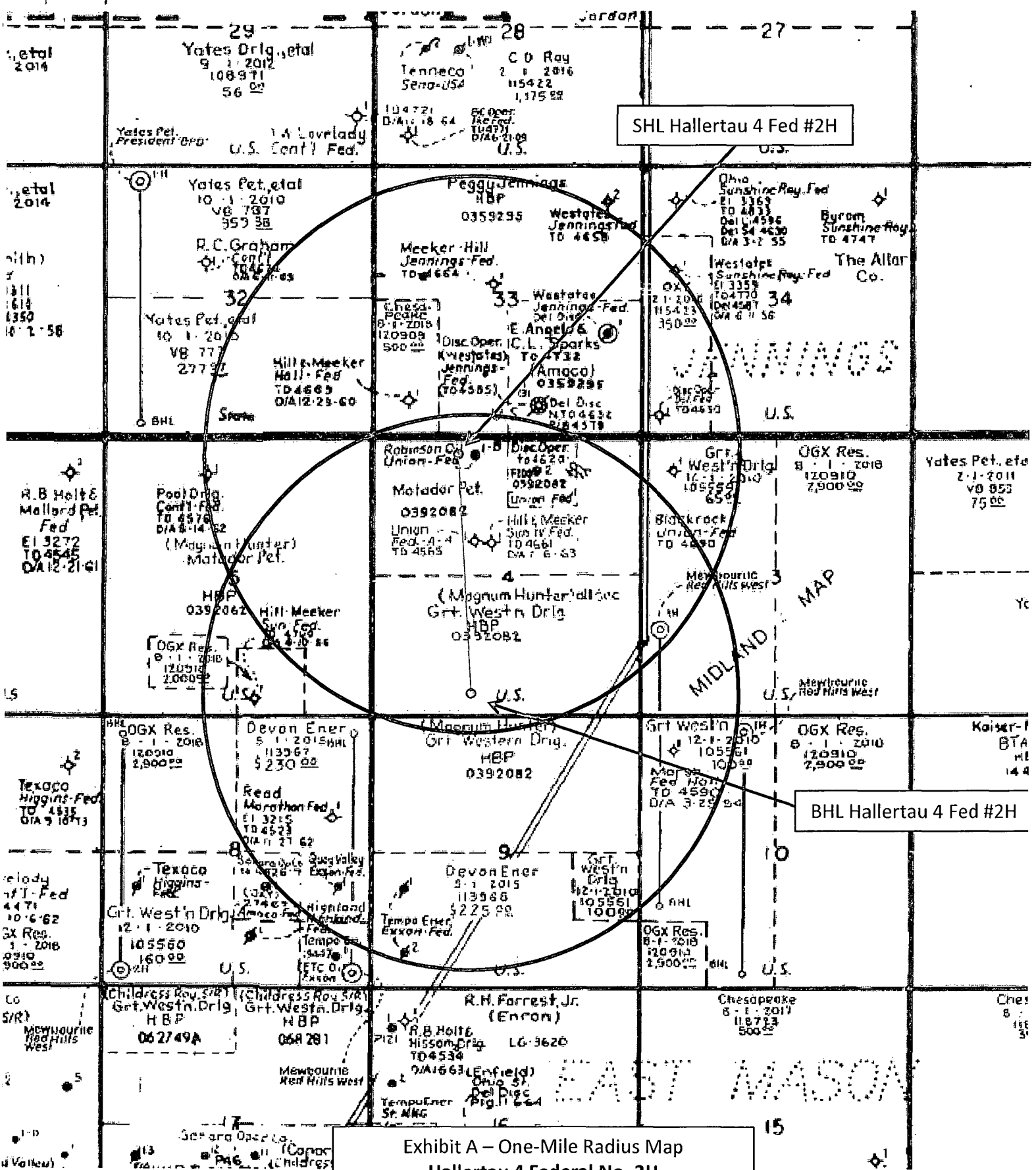


Exhibit A – One-Mile Radius Map
Hallertau 4 Federal No. 2H
Cimarex Energy Co. of Colorado
4-26S-32E
SHL 330 FNL & 1650 FWL
BHL 330 FSL & 1980 FWL
Lea County, NM