

SURFACE USE PLAN

HOBBS OCD

APR 26 2013

RECEIVED

Devon Energy Production Company, L. P.
 CAPROCK 27 STATE FED COM 1H
 Surface Hole: 420 FSL & 1980 FWL
 Bottom Hole: 330 FNL & 1980 FWL
 Section 27, T. 18 S., R. 34 E
 Lea County, New Mexico

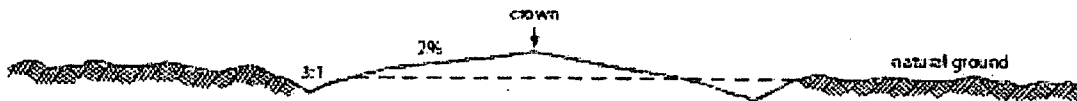
This plan is submitted with form 3160-3, Application for Permit to Drill, covering the above described well. The purpose of this plan is to describe the location of the proposed well, the proposed construction activities and operations plan, the magnitude of the surface disturbance involved and the procedures to be followed in rehabilitating the surface after completion of the operations, so that a complete appraisal can be made of the environmental effect associated with the operations.

1. EXISTING ROADS:

- A. DIRECTIONS: Go west from intersection of Highway 529 and 62/180 10.6 miles. Turn south off Highway 129 on Gemini Road lease road for 0.3 miles. Turn Southeast on old lease road for 0.2 miles. The proposed lease road, of 1899' will begin at this point. All existing roads are either paved or a caliche lease road.
- B. See attached plats and maps provided by WTC Surveys.
- C. The access routes from Highway 529 to the well location is depicted on **Exhibit A**. The route highlighted in red is all on state lands and does not require a ROW permit.
- D. Existing roads on the access route will be improved and maintained to the standard set forth in Section 2 of this Surface Use Plan of Operations.

2. NEW OR RECONSTRUCTED ACCESS ROADS:

- A. The new access road will begin at the southwest corner of the proposed well location and run west for 1899 ft. to the existing lease road.
- B. The maximum width of the driving surface will be 14 feet. The road will be crowned and ditched with a 2% slope from tip of crown to edge of the driving surface. The ditches will be 1 foot deep with 3:1 slopes. The driving surface will be made of 6" rolled and compacted caliche.



Level Ground Section

- C. Surface material will be native caliche. The average grade of the entire road will be approximately 3%.
- D. Fence Cuts: No
- E. Cattle guards: No
- F. Turnouts: No
- G. Culverts: No
- H. Cuts and Fills: Not significant
- I. Approximately 6 inches of topsoil (root zone) will be stripped from the proposed access road prior to any further construction activity. The topsoil that was stripped will be spread along the

APR 29 2013

edge of the road and within the ditch. The topsoil will be seeded with the proper seed mix designated by the BLM.

- J. The access road will be constructed and maintained as necessary to prevent soil erosion and accommodate all-weather traffic. The road will be crowned and ditched with water turnouts installed as necessary to provide for proper drainage along the access road route.
- K. The access road and associated drainage structures will be constructed and maintained in accordance with road guidelines contained in the joint BLM/USFS publication: Surface Operating Standards for Oil and Gas Exploration and Development, The Gold Book, Fourth Edition and/or BLM Manual Section 9113 concerning road construction standards on projects subject to federal jurisdiction.

3. LOCATION OF EXISTING WELLS:

See attached map (**Exhibit B**) showing all wells within a one-mile radius.

4. LOCATION OF EXISTING AND/OR PROPOSED FACILITIES:

- A. In the event the well is found productive, a production facility (Tank Battery) will be placed on the northwest side of this proposed well pad.
- B. All permanent (on site six months or longer) aboveground structures constructed or installed on location and not subject to safety requirements will be painted to BLM specifications.
- C. Containment berms will be constructed completely around production facilities designed to hold fluids. The containment berms will be constructed or compacted subsoil, be sufficiently impervious, hold 1 ½ times the capacity of the largest tank and away from cut or fill areas.

5. LOCATION AND TYPE OF WATER SUPPLY:

The well will be drilled using a combination of water mud systems as outlined in the Drilling Program. The water will be obtained from commercial water stations in the area and hauled to the location by transport truck using the existing and proposed roads shown in the attached survey plats. If a commercial water well is nearby, a temporary, surface poly line, will be laid along existing roads or other ROW easements and the water pumped to the well. No water well will be drilled on the location.

6. SOURCE OF CONSTRUCTION MATERIALS:

Any construction material that may be required for surfacing of the drill pad and access road will be from a contractor having a permitted source of materials within the general area. No construction materials will be removed from Federal lands without prior approval from the appropriate surface management agency. All roads will be constructed of 6" rolled and compacted caliche.

7. METHODS OF HANDLING WASTE DISPOSAL:

- A. The well will be drilled utilizing a closed loop mud system. Drill cuttings will be held in roll-off style mud boxes and taken to an NMOCD approved disposal site.
- B. Drilling fluids will be contained in steel mud pits.
- C. Water produced from the well during completion will be held temporarily in steel tanks and then taken to an NMOCD approved commercial disposal facility.
- D. Oil produced during operations will be stored in tanks until sold.
- E. Portable, self-contained chemical toilets will be provided for human waste disposal. Upon completion of operations, or as required, the toilet holding tanks will be pumped and the contents thereof disposed of in an approved sewage disposal facility. All state

and local laws and regulations pertaining to disposal of human and solid waste will be complied with. This equipment will be properly maintained during the drilling and completion operations and will be removed when all operations are complete.

- F. All trash, junk, and other waste materials will be contained in trash cages or bins to prevent scattering and will be removed and deposited in an approved sanitary landfill. Immediately after drilling all debris and other waste materials on and around the well location, not contained in the trash cage will be cleaned up and removed from the location. No potentially adverse materials or substances will be left on the location.

8. ANCILLARY FACILITIES:

No campsite, airstrip, or other facilities will be built as a result of the operation of this well. No staging areas are needed.

9. WELL SITE LAYOUT:

- A. Exhibit A shows the dimensions of the proposed well pad.
B. The proposed well pad size will be 325' x 420' (**See Exhibit D**). There will be no reserve pit due to the well being drilled utilizing a closed loop mud system. The closed loop system will meet the NMOCD requirements 19.15.17.
C. The WTC Surveyor's plat, Form C-102 and **Exhibit D**, shows how the well will be turned to a V-Door Southeast.
D. A 600' x 600' area has been staked and flagged.
E. All equipment and vehicles will be confined to the approved disturbed areas of this APD (i.e., access road, well pad, and topsoil storage areas)

10. PLANS FOR SURFACE RECLAMATION:

- A. After concluding the drilling and/or completion operations, if the well is found non-commercial, all the equipment will be removed, the surface material, caliche, will be removed from the well pad and road and transported to the original caliche pit or used for other roads. The original stock piled top soil will be returned to the pad and contoured, as close as possible, to the original topography. The access road will have the caliche removed and the road ripped, barricaded and seeded as directed by the BLM.
B. If the well is a producer, the portions of the location not essential to production facilities or space required for workover operations, will be reclaimed and seeded as per BLM requirements.

(SEE EXHIBIT C FOR INTERIM RECLAMATION PLAT FOR THIS WELL)

C. Reclamation Performance Standards

The following reclamation performance standards will be met:

Interim Reclamation – Includes disturbed areas that may be redisturbed during operations and will be redisturbed at final reclamation to achieve restoration of the original landform and a natural vegetative community.

- Disturbed areas not needed for active, long-term production operations or vehicle travel will be recontoured, protected from erosion, and revegetated with a self-sustaining, vigorous, diverse, native (or as otherwise approved) plant community sufficient to minimize visual impacts, provide forage, stabilize soils, and impede the invasion of noxious, invasive, and non-native weeds.

Final Reclamation – Includes disturbed areas where the original landform and a natural vegetative community will be restored and it is anticipated the site will not be redisturbed for future development.

- The original landform will be restored for all disturbed areas including well pads, production facilities, roads, pipelines, and utility corridors.
- A self-sustaining, vigorous, diverse, native (or otherwise approved) plant community will be established on the site, with a density sufficient to control erosion and invasion by non-native plants and to re-establish wildlife habitat or forage production. At a minimum, the established plant community will consist of species included in the seed mix and/or desirable species occurring in the surrounding natural vegetation.
- Erosion features are equal to or less than surrounding area and erosion control is sufficient so that water naturally infiltrates into the soil and gullyng, headcutting, slumping, and deep or excessive rills (greater than 3 inches) are not observed.
- The site will be free of State- or county-listed noxious weeds, oil field debris and equipment, and contaminated soil. Invasive and non-native weeds are controlled.

D. Reclamation Actions

Earthwork for interim and final reclamation will be completed within 6 months of well completion or plugging unless a delay is approved in writing by the BLM authorized officer.

The following minimum reclamation actions will be taken to ensure that the reclamation objectives and standards are met. It may be necessary to take additional reclamation actions beyond the minimum in order to achieve the Reclamation Standards.

Reclamation – General

Notification:

- The BLM will be notified at least 3 days prior to commencement of any reclamation operations.

Housekeeping:

- Within 30 days of well completion, the well location and surrounding areas(s) will be cleared of, and maintained free of, all debris, materials, trash, and equipment not required for production.
- No hazardous substances, trash, or litter will be buried or placed in pits.

Topsoil Management:

- Operations will disturb the minimum amount of surface area necessary to conduct safe and efficient operations.
- Topsoil depth is defined as the top layer of soil that contains 80% of the roots. In areas to be heavily disturbed, the topsoil will be stripped and stockpiled around the perimeter of the well location and along the perimeter of the access road to control run-on and run-off, to keep topsoil viable, and to make redistribution of topsoil more efficient during interim reclamation. Stockpiled topsoil will include vegetative material. Topsoil will be clearly segregated and stored separately from subsoils.
- Salvaging and spreading topsoil will not be performed when the ground or topsoil is frozen or too wet to adequately support construction equipment or so dry that dust clouds greater than 30 feet tall are created. If such equipment creates ruts in excess of four (4) inches deep, the soil will be deemed too wet.

- No major depressions will be left that would trap water and cause ponding unless the intended purpose is to trap runoff and sediment.

Seeding:

- Seedbed Preparation. Initial seedbed preparation will consist of recontouring to the appropriate interim or final reclamation standard. All compacted areas to be seeded will be ripped to a minimum depth of 18 inches with a minimum furrow spacing of 2 feet, followed by recontouring the surface and then evenly spreading the stockpiled topsoil. Prior to seeding, the seedbed will be scarified to a depth of no less than 4 – 6 inches. If the site is to be broadcast seeded, the surface will be left rough enough to trap seed and snow, control erosion, and increase water infiltration.
- If broadcast seeding is to be used and is delayed, final seedbed preparation will consist of contour cultivating to a depth of 4 to 6 inches within 24 hours prior to seeding, dozer tracking, or other imprinting in order to break the soil crust and create seed germination micro-sites.
- Seed Application. Seeding will be conducted no more than two weeks following completion of final seedbed preparation. A certified weed-free seed mix designed by the BLM to meet reclamation standards will be used.
- If the site is harrowed or dragged, seed will be covered by no more than 0.25 inch of soil.

11. SURFACE OWNERSHIP:

- A. The surface is owned by the Bureau of Land Management. The surface is multiple use with the primary uses of the region for the grazing of livestock and the production of oil and gas.

12. OTHER INFORMATION:

- A. The area surrounding the well site is in a very flat, shallow loam type, within a flat grassland type on top of the Caprock area. The vegetation consists of Mesquite, Grama and some dropseed species.
- B. There is no permanent or live water in the immediate area.
- C. There are no dwellings within 2 miles of this location.
- D. The location falls outside of the MOA area and therefore, an archaeological report has been filed with the Carlsbad, Field Office for this application.

13. BOND COVERAGE:

Bond Coverage is Nationwide; Bond Number NMB-000801 and CO-1104.

OPERATORS REPRESENTATIVE:

The Devon Energy Production Company, L.P. representatives responsible for ensuring compliance of the surface use plan are listed below:

Surface:

Barry W. Hunt – Permitting Agent
1403 Springs Farm Place
Carlsbad, NM 88220
(575) 885-1417 (Home)
(575) 361-4078 (Cell)

Drilling & Production:

James Albee – Operations Engineer, Devon Energy Production, L.P.
333 W. Sheridan
Oklahoma City, Ok. 73102
(405) 228-8698 (Office)
(405) 820-8682 (Cell)

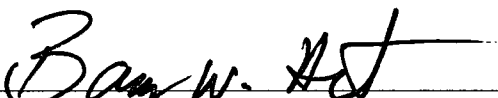
ON-SITE PERFORMED ON 5/11/12 RESULTED IN PROPOSED LOCATION BEING TURNED TO A V-DOOR SOUTHEAST AND RESTRICT PAD SIZE TO THE NORTHEAST TO 150' DUE TO HIGHWAY 529 ROW FENCE AT 180'. IT WAS FURTHER AGREED TO PLACE THE TOPSOIL TO THE SOUTHEAST AND INTERIM RECLAMATION WOULD BE THE SOUTHEAST AND A PORTION OF THE SOUTHWEST PORTIONS OF PAD. ALSO AGREED TO PLACE THE TANK BATTERY ON THE NORTHWEST SIDE OF PAD.

PRESENT AT ON-SITE:

**BARRY HUNT – PERMIT AGENT FOR DEVON ENERGY PRODUCTION COMPANY
TRISH BADBEAR – BLM
WTC SURVEYORS**

CERTIFICATION

I hereby certify that I, or persons under my direct supervision, have inspected the proposed drill site and access road proposed herein; that I am familiar with the conditions that presently exist; that I have full knowledge of State and Federal laws applicable to this operation; that the statements made in this APD package are, to the best of my knowledge, true and correct, and that the work associated with the operations proposed herein will be performed in conformity with this APD package and the terms and conditions under which it is approved. I also certify that I, or Devon Energy Production, L.P. am responsible for the operations conducted under this application. These statements are subject to the provisions of 18 U. S. C. 1001 for the filing of false statements. Executed this 27th day of September 2012.

Signed: 

Printed Name: Barry Hunt

Position: Agent for Devon Energy Production, LLC.

Address: 1403 Springs Farm Place, Carlsbad, NM 88220

Telephone: (575) 361-4078

E-mail: specialtpermitting@gmail.com

Field Representative: Don Mayberry

Address: P. O. Box 250, Artesia, NM 88211-0250

Telephone: Office: (575) 748-0164, Cell: (575) 748-5235



Devon Energy Corporation
20 North Broadway
Oklahoma City, OK 73102-8260

405 235 3611 Phone
www.devonenergy.com

June 5, 2012

To Whom It May Concern:

Mr. Barry Hunt is contracted by Devon Energy, L.P. to sign as their agent for APDs and Right of Ways in the state of New Mexico.

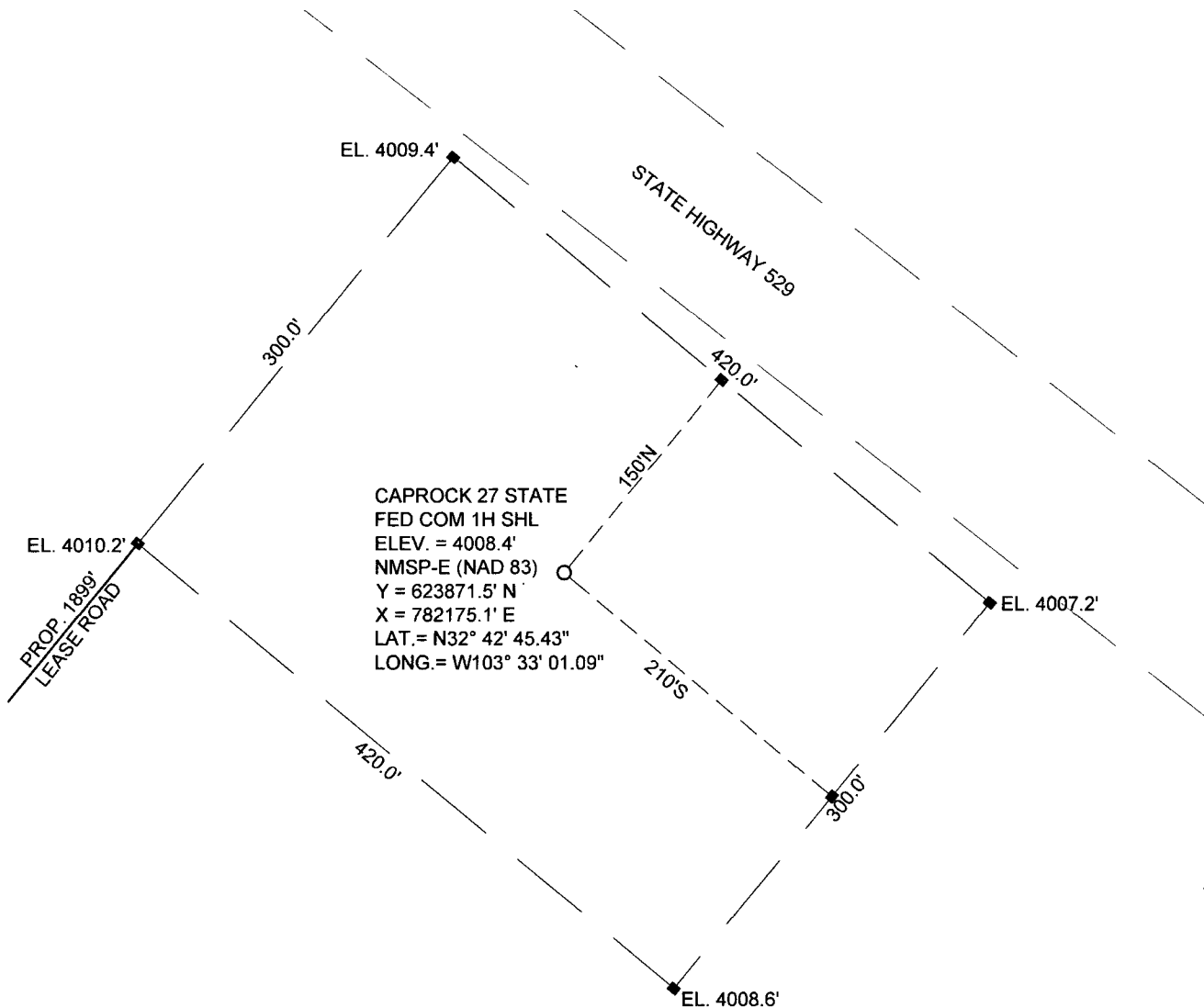
If you have any questions, please contact me at my office at (405) 228-8379.

Sincerely,


Victoria Sanchez

Supervisor, Regulatory Compliance
Mid-Continent Division
Devon Energy, L.P.

SITE LOCATION



SCALE: 1" = 100'

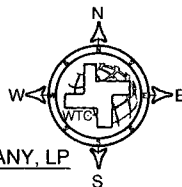
SECTION 27, T 18 S, R 34 E, N.M.P.M.

COUNTY: LEA STATE: NM

DESCRIPTION: 420' FSL & 1980' FWL

OPERATOR: DEVON ENERGY PRODUCTION COMPANY, LP

WELL NAME: CAPROCK 27 STATE FED COM-1H



DRIVING DIRECTIONS:

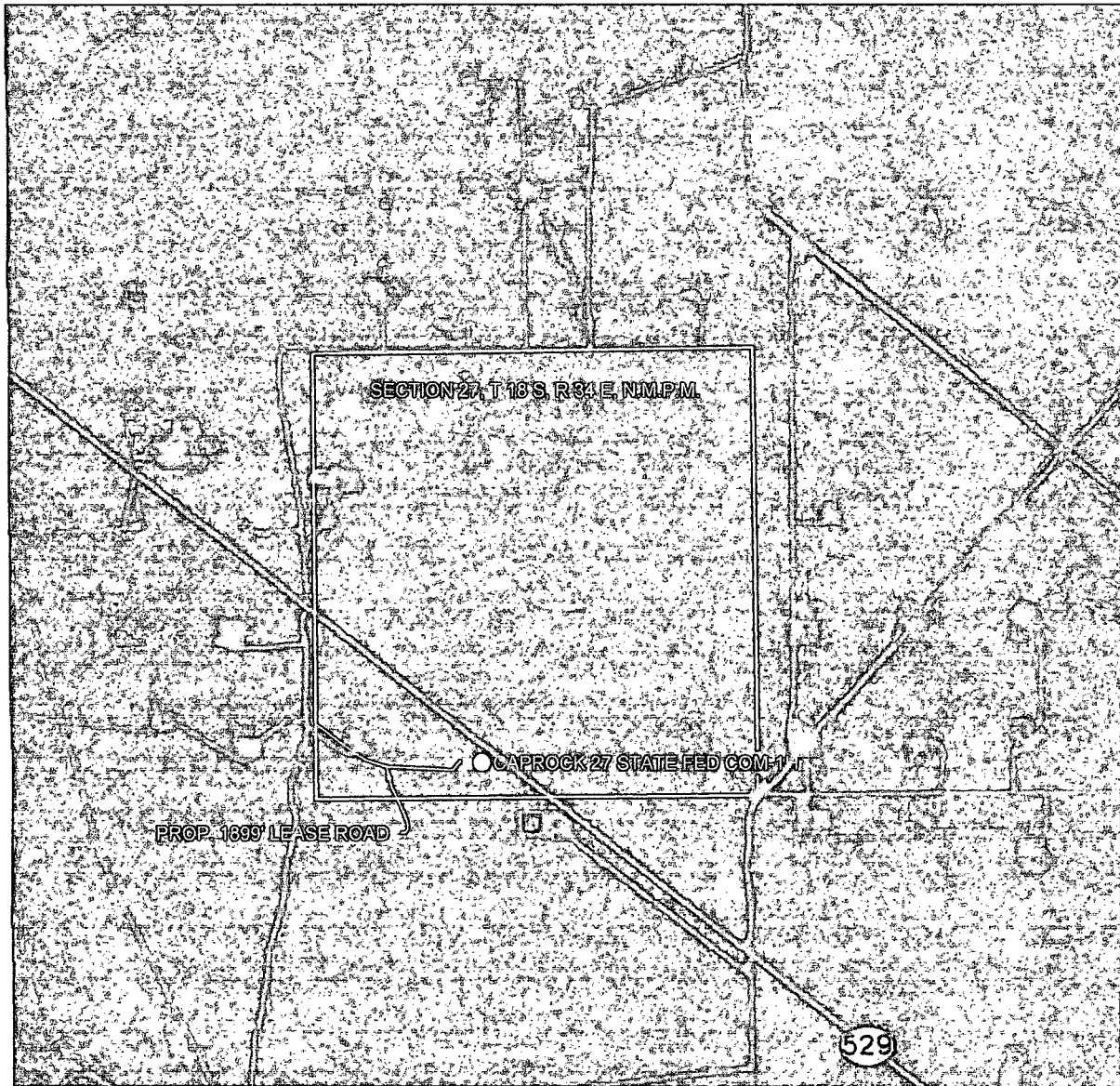
FROM JUNCTION OF STATE HIGHWAY 529 AND HIGHWAY 62/180, ABOUT 12 MILES WEST OF HOBBS, NM., GO WEST ON 529 FOR 10.6 MILES TO GEMINI ROAD ON THE LEFT. GO SOUTH ON GEMINI ROAD 0.3 MILES TO A LEASE ROAD TO THE LEFT. GO SOUTHEAST ON LEASE ROAD 0.2 MILES TO THE PROPOSED LEASE ROAD AND THE LOCATION IS ±2000' AHEAD.



WEST TEXAS CONSULTANTS, INC.
ENGINEERS PLANNERS SURVEYORS
405 S.W. 1st STREET
ANDREWS, TEXAS 79714
(432) 523-2181



AERIAL MAP



SCALE: 1" = 2000'

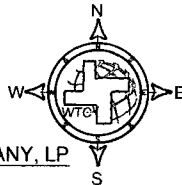
SECTION 27, T 18 S, R 34 E, N.M.P.M.

COUNTY: LEA STATE: NM

DESCRIPTION: 420' FSL & 1980' FWL

OPERATOR: DEVON ENERGY PRODUCTION COMPANY, LP

WELL NAME: CAPROCK 27 STATE FED COM-1H



DRIVING DIRECTIONS:

FROM JUNCTION OF STATE HIGHWAY 529 AND HIGHWAY 62/180, ABOUT 12 MILES WEST OF HOBBS, NM., GO WEST ON 529 FOR 10.6 MILES TO GEMINI ROAD ON THE LEFT. GO SOUTH ON GEMINI ROAD 0.3 MILES TO A LEASE ROAD TO THE LEFT. GO SOUTHEAST ON LEASE ROAD 0.2 MILES TO THE PROPOSED LEASE ROAD AND THE LOCATION IS $\pm 2000'$ AHEAD.

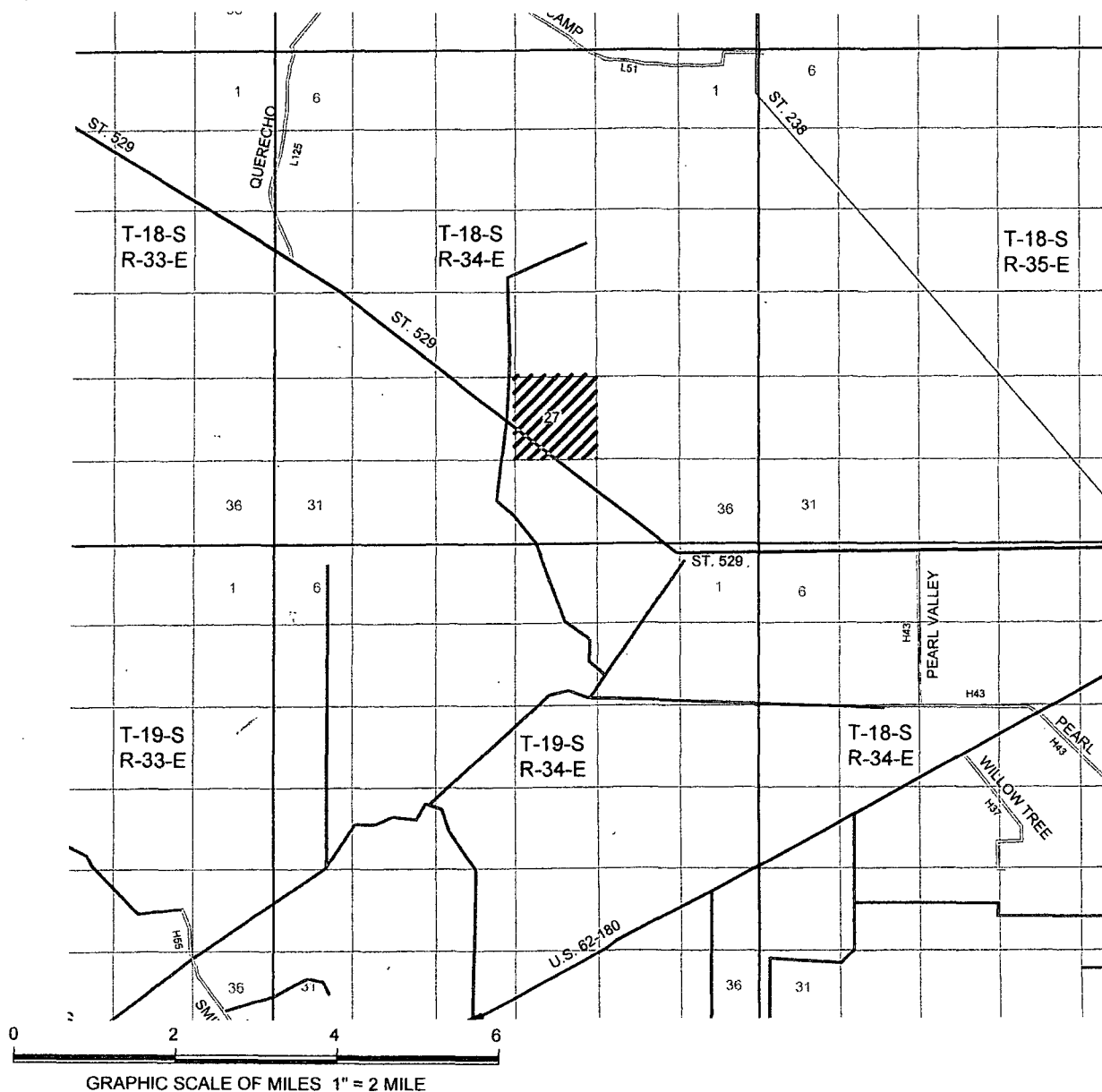


WEST TEXAS CONSULTANTS, INC.
ENGINEERS PLANNERS SURVEYORS
405 S.W. 1st STREET
ANDREWS, TEXAS 79714
(432) 523-2181



JOB No.: WTC48541

VICINITY MAP



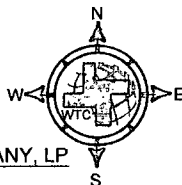
SECTION 27, T 18 S, R 34 E, N.M.P.M.

COUNTY: LEA STATE: NM

DESCRIPTION: 420' FSL & 1980' FWL

OPERATOR: DEVON ENERGY PRODUCTION COMPANY, LP

WELL NAME: CAPROCK 27 STATE FED COM-1H



DRIVING DIRECTIONS:

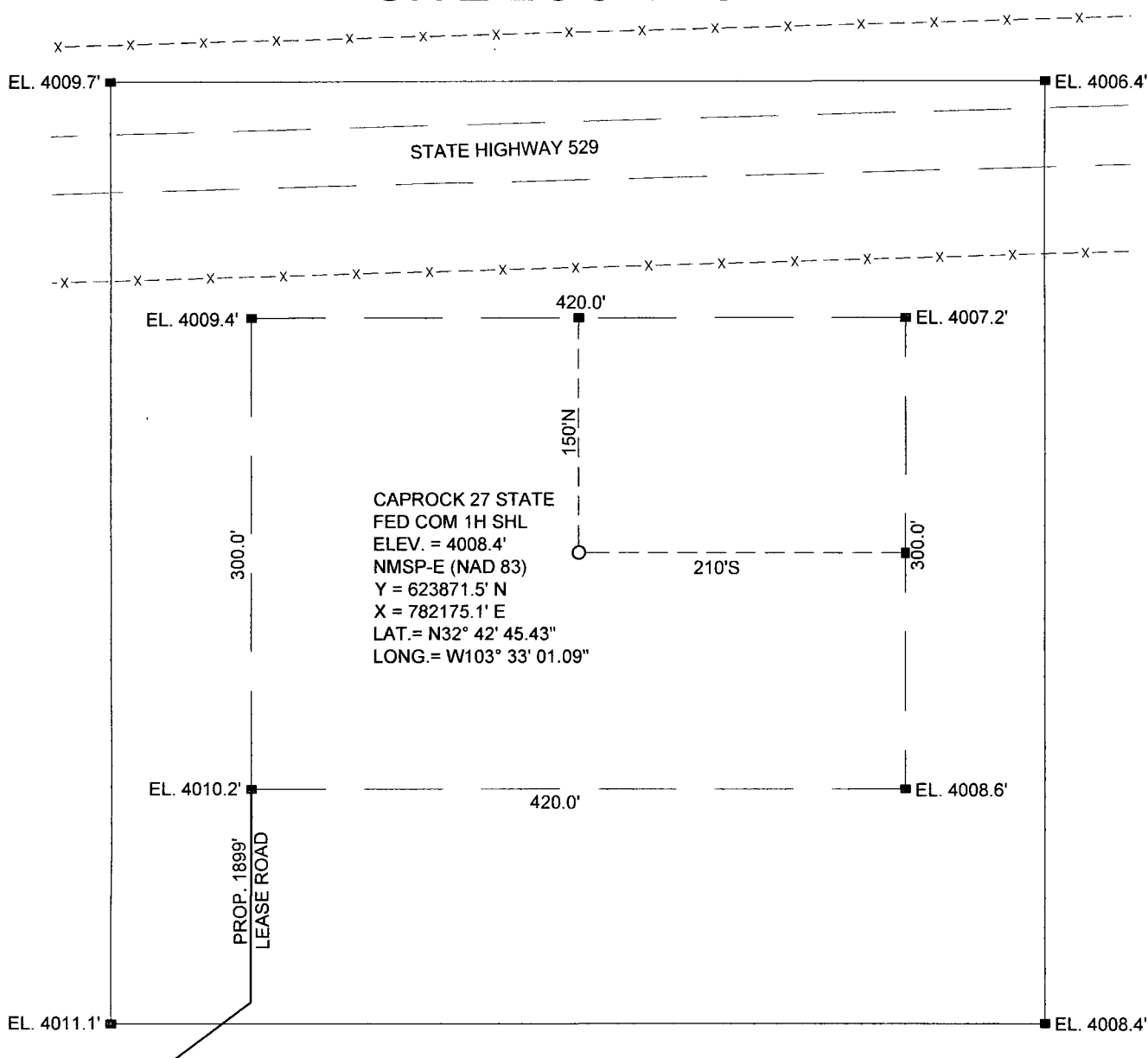
FROM JUNCTION OF STATE HIGHWAY 529 AND HIGHWAY 62/180, ABOUT 12 MILES WEST OF HOBBS, NM., GO WEST ON 529 FOR 10.6 MILES TO GEMINI ROAD ON THE LEFT. GO SOUTH ON GEMINI ROAD 0.3 MILES TO A LEASE ROAD TO THE LEFT. GO SOUTHEAST ON LEASE ROAD 0.2 MILES TO THE PROPOSED LEASE ROAD AND THE LOCATION IS $\pm 2000'$ AHEAD.



WEST TEXAS CONSULTANTS, INC.
ENGINEERS PLANNERS SURVEYORS
405 S.W. 1st. STREET
ANDREWS, TEXAS 79714
(432) 523-2181

devon

SITE LOCATION



SCALE: 1" = 100'

SECTION 27, T 18 S, R 34 E, N.M.P.M.

COUNTY: LEA STATE: NM

DESCRIPTION: 420' FSL & 1980' FWL

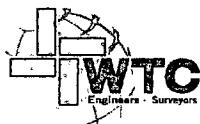
OPERATOR: DEVON ENERGY PRODUCTION COMPANY, LP

WELL NAME: CAPROCK 27 STATE FED COM-1H



DRIVING DIRECTIONS:

FROM JUNCTION OF STATE HIGHWAY 529 AND HIGHWAY 62/180, ABOUT 12 MILES WEST OF HOBBS, NM., GO WEST ON 529 FOR 10.6 MILES TO GEMINI ROAD ON THE LEFT. GO SOUTH ON GEMINI ROAD 0.3 MILES TO A LEASE ROAD TO THE LEFT. GO SOUTHEAST ON LEASE ROAD 0.2 MILES TO THE PROPOSED LEASE ROAD AND THE LOCATION IS ±2000' AHEAD.

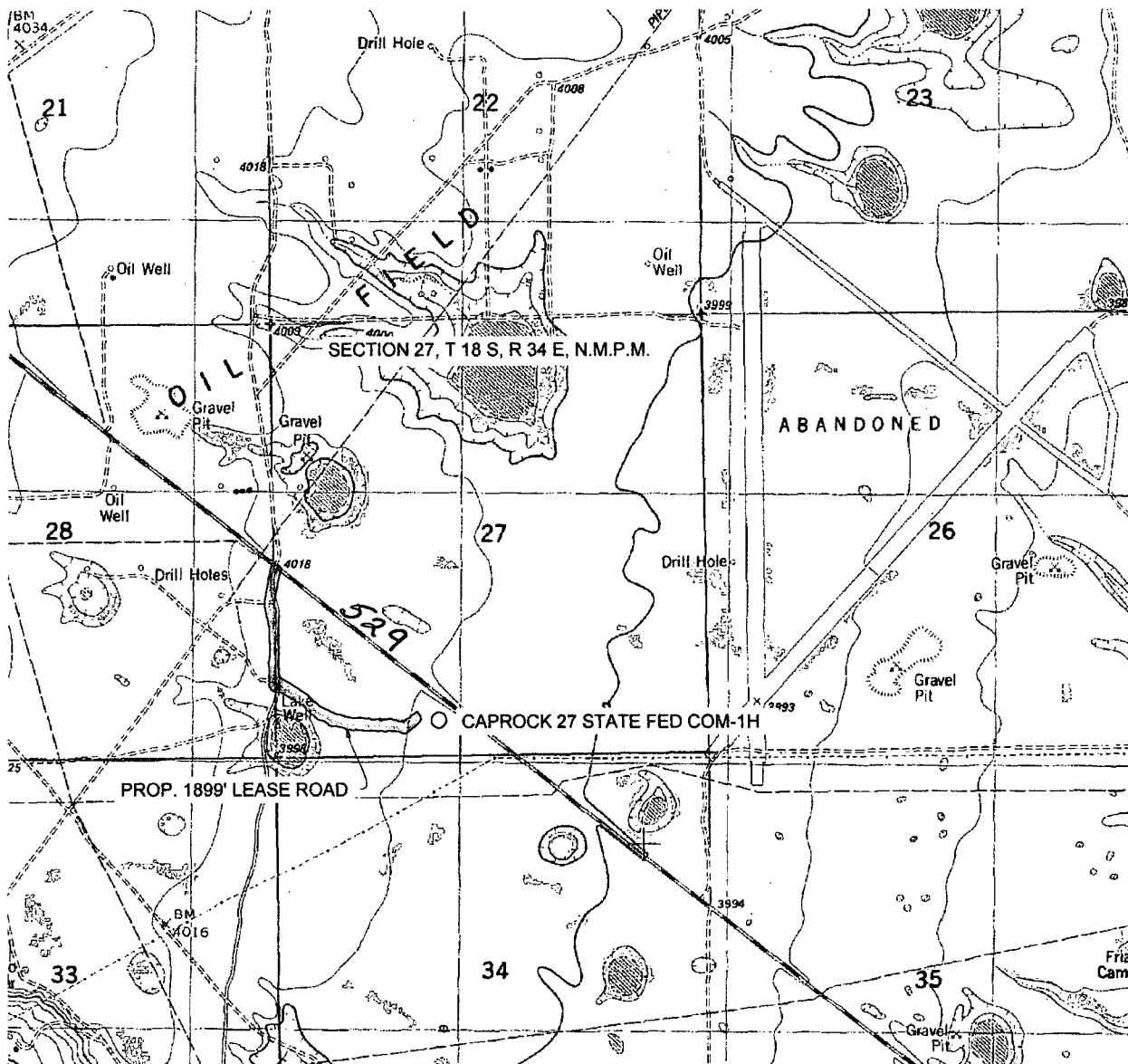


WEST TEXAS CONSULTANTS, INC.
ENGINEERS PLANNERS SURVEYORS
405 S.W. 1st STREET
ANDREWS, TEXAS 79714
(432) 523-2181



Exhibit A Access

LOCATION VERIFICATION MAP



SCALE: 1" = 2000'

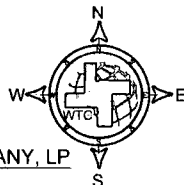
SECTION 27, T 18 S, R 34 E, N.M.P.M.

COUNTY: LEA STATE: NM

DESCRIPTION: 420' FSL & 1980' FWL

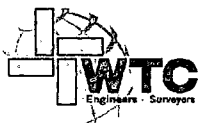
OPERATOR: DEVON ENERGY PRODUCTION COMPANY, LP

WELL NAME: CAPROCK 27 STATE FED COM-1H



DRIVING DIRECTIONS:

FROM JUNCTION OF STATE HIGHWAY 529 AND HIGHWAY 62/180, ABOUT 12 MILES WEST OF HOBBS, NM., GO WEST ON 529 FOR 10.6 MILES TO GEMINI ROAD ON THE LEFT. GO SOUTH ON GEMINI ROAD 0.3 MILES TO A LEASE ROAD TO THE LEFT. GO SOUTHEAST ON LEASE ROAD 0.2 MILES TO THE PROPOSED LEASE ROAD AND THE LOCATION IS $\pm 2000'$ AHEAD.

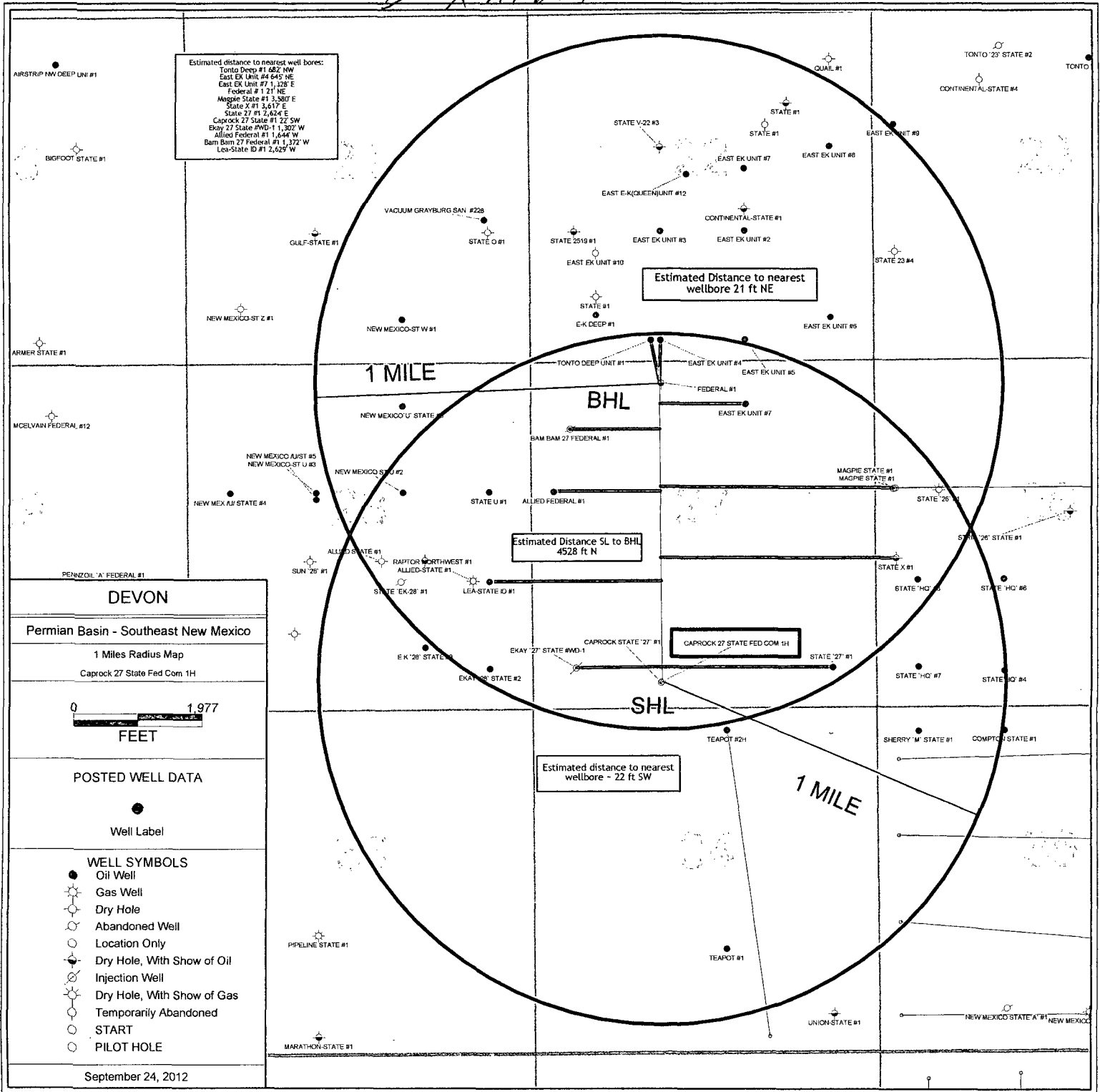


WEST TEXAS CONSULTANTS, INC.
ENGINEERS PLANNERS SURVEYORS
405 S.W. 1st. STREET
ANDREWS, TEXAS 79714
(432) 523-2181



JOB No.: WTC48541

Exhibit B



DISTRICT I
1033 N. French Dr., Hobbs, NM 88240
Phone: (505) 393-6101 Fax: (505) 393-6720

DISTRICT II
3117 S. Tenth St., Alameda, NM 88210
Phone: (505) 348-1283 Fax: (505) 348-4720

DISTRICT III
1000 Ray Briscoe Bld., Alamogordo, NM 87410
Phone: (505) 318-6178 Fax: (505) 318-5170

DISTRICT IV
1220 S. St. Francis Dr., Santa Fe, NM 87505
Phone: (505) 476-3100 Fax: (505) 476-3462

State of New Mexico
Energy, Minerals & Natural Resources Department
OIL CONSERVATION DIVISION
1220 South St. Francis Dr.
Santa Fe, New Mexico 87505

Form C-102
Revised August 1, 2011
Submit one copy to appropriate
District Office
☐ AMENDED REPORT

WELL LOCATION AND ACREAGE DEDICATION PLAT

API Number	Pool Code	Pool Name UNDESIGNATED BONE SPRING
Property Code	Property Name CAPROCK 27 STATE COM	Well Number 1H
OGRID No. 6137	Operator Name DEVON ENERGY PRODUCTION COMPANY, LP	Elevation 4008.4'

Surface Location

UL or lot no.	Section	Township	Range	Lot Idn	Feet from the	North/South line	Feet from the	East/West line	County
N	27	18 S	34 E		420	SOUTH	1980	WEST	LEA

Bottom Hole Location If Different From Surface

UL or lot no.	Section	Township	Range	Lot Idn	Feet from the	North/South line	Feet from the	East/West line	County
C	27	18 S	34 E		330	NORTH	1980	WEST	LEA

Dedicated Acres	Join or Infill	Consolidated Code	Order No.
160			

No allowable will be assigned to this completion until all interests have been consolidated or a non-standard unit has been approved by the division.

	<p>OPERATOR CERTIFICATION</p> <p>I hereby certify that the information contained herein is true and complete to the best of my knowledge and belief, and that this organization either owns a working interest or unleased mineral interest in the land including the proposed bottom hole location or has a right to drill this well at this location pursuant to a contract with an owner of such a mineral or working interest, or to voluntary pooling agreement or a compulsory pooling order heretofore entered by the division.</p> <p>Signature _____ Date _____</p> <p>Print Name _____</p> <p>E-mail Address _____</p>
	<p>SURVEYORS CERTIFICATION</p> <p>I hereby certify that the well location shown on this plat was plotted from field notes of actual surveys made by me or under my supervision, and that the same is true and correct to the best of my belief.</p> <p>MAY 15, 2012</p> <p>Date of Survey</p> <p>Signature and Seal of Professional Surveyor</p> <p></p> <p>Job No. WTC48541</p> <p>JAMES E. TOMPKINS 14729</p> <p>Certificate Number</p>

11 = Project AREA - 160 ACRES

Caprock 27 State Fed Com 1H
E/2 W/2 Section 27-18S-34E
Lea County, New Mexico

NW/4 NW/4	NE/4 NW/4 USA NMNM 117557	NW/4 NE/4	NE/4 NE/4
SW/4 NW/4	SE/4 NW/4 USA NMNM- 117557	SW/4 NE/4	SE/4 NE/4
NW/4 SW/4	NE/4 SW/4 State of NM VB-1464	NW/4 SE/4	NE/4 SE/4
SW/4 SW/4	SE/4 SW/4 State of NM VB-1464	SW/4 SE/4	SE/4 SE/4