

DISTRICT I

1625 N. French Dr., Hobbs, NM 88240
Phone: (575) 393-6161 Fax: (575) 393-0720

DISTRICT II

811 S. First St., Artesia, NM 88210
Phone: (575) 748-1283 Fax: (575) 748-9720

DISTRICT III

1000 Rio Brazos Road, Aztec, NM 87410
Phone: (505) 334-6178 Fax: (505) 334-6170

DISTRICT IV

1220 S. St. Francis Dr., Santa Fe, NM 87505
Phone: (505) 476-3460 Fax: (505) 476-3462

State of New Mexico

Energy, Minerals & Natural Resources Department

OIL CONSERVATION DIVISION

1220 South St. Francis Dr.
Santa Fe, New Mexico 87505

Form C-102

Revised August 1, 2011

Submit one copy to appropriate
District Office

☐ AMENDED REPORT

RECEIVED

WELL LOCATION AND ACREAGE DEDICATION PLAT

API Number 30025-41154	Pool Code 62180	Pool Name VACUUM; GRAYBURG SAN ANTONIO
Property Code 29923	Property Name CVU	Well Number 256
OGRID No. 4323	Operator Name CHEVRON USA INC.	Elevation 4005'

Surface Location

UL or lot No.	Section	Township	Range	Lot Idn	Feet from the	North/South line	Feet from the	East/West line	County
F	36	17-S	34-E		1480	NORTH	1990	WEST	LEA

Bottom Hole Location If Different From Surface

UL or lot No.	Section	Township	Range	Lot Idn	Feet from the	North/South line	Feet from the	East/West line	County

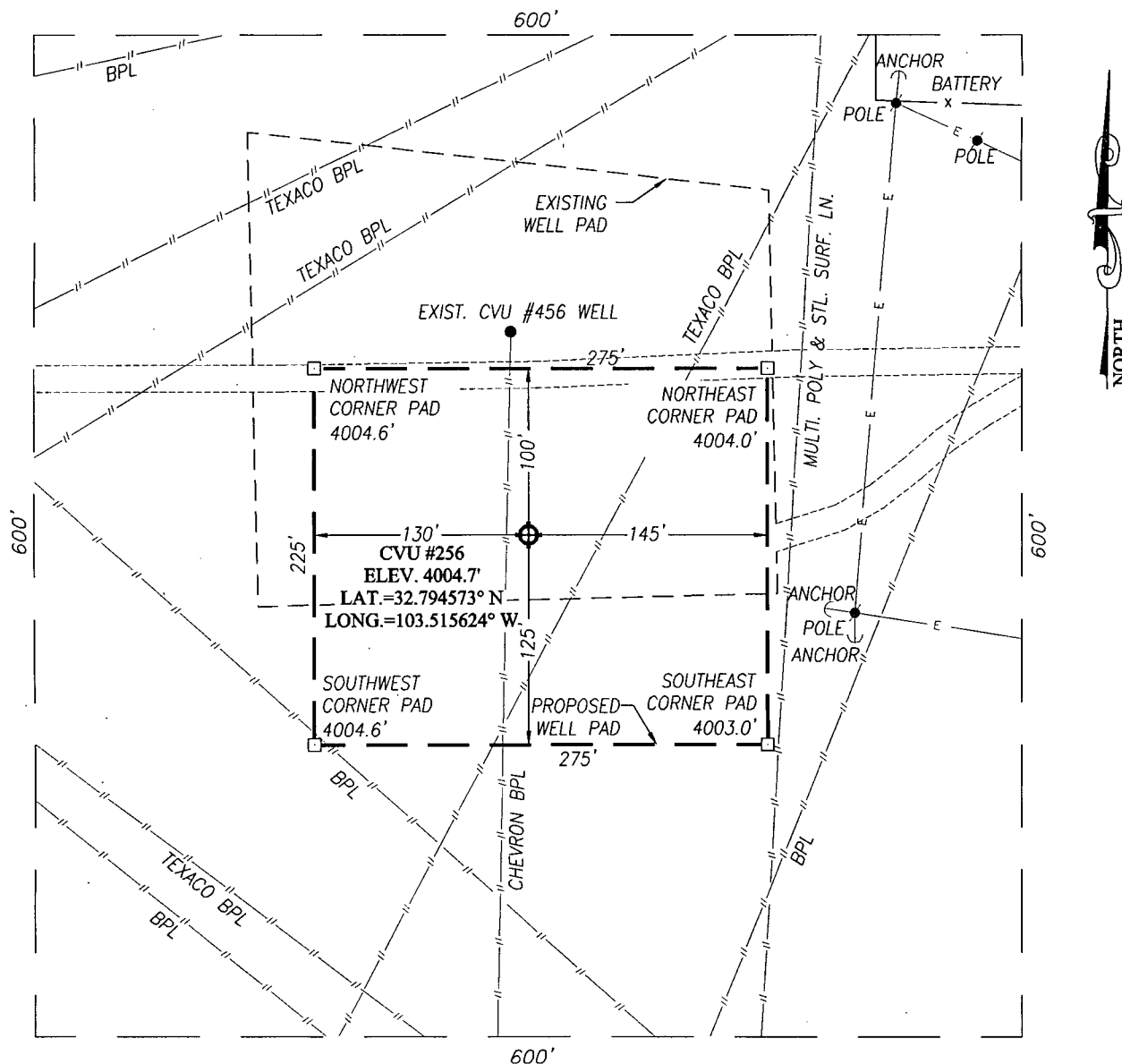
Dedicated Acres	Joint or Infill	Consolidation Code	Order No.
40			

NO ALLOWABLE WILL BE ASSIGNED TO THIS COMPLETION UNTIL ALL INTERESTS HAVE BEEN CONSOLIDATED OR A NON-STANDARD UNIT HAS BEEN APPROVED BY THE DIVISION

<p>GEODETIC COORDINATES NAD 27 NME</p> <p>SURFACE LOCATION Y=653747.8 N X=751278.8 E</p> <p>LAT.=32.794573° N LONG.=103.515624° W</p>	<p>OPERATOR CERTIFICATION</p> <p>I hereby certify that the information herein is true and complete to the best of my knowledge and belief, and that this organization either owns a working interest or unleased mineral interest in the land including the proposed bottom hole location or has a right to drill this well at this location pursuant to a contract with an owner of such mineral or working interest, or to a voluntary pooling agreement or a compulsory pooling order heretofore entered by the division.</p> <p><i>Denise Pinkerton</i> 04/30/2013 Signature Date</p> <p>Denise Pinkerton Printed Name</p> <p>Leakejd@Chevron.com E-mail Address</p>
	<p>SURVEYOR CERTIFICATION</p> <p>I hereby certify that the well location shown on this plat was plotted from field notes of actual surveys made by me or under my supervision, and that the same is true and correct to the best of my belief.</p> <p>APRIL 16, 2013 Date of Survey</p> <p>Signature of Professional Surveyor: <i>Gary G. Eidson</i></p> <p>GARY G. EIDSON NEW MEXICO 12641 PROFESSIONAL SURVEYOR</p> <p>Certificate Number: Gary G. Eidson 12641 Professional Surveyor: 3239</p> <p>ACR Rev. 4/30/11 JWSC W.O.: 13.11.0350</p>

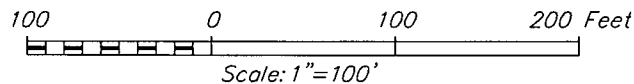
MAY 06 2013

SECTION 36, TOWNSHIP 17 SOUTH, RANGE 34 EAST, N.M.P.M.
LEA COUNTY **NEW MEXICO**



DIRECTIONS TO LOCATION

FROM THE INTERSECTION OF STATE HWY. 238 AND BUCKEYE ROAD, GO SOUTH ON STATE HWY. 238 APPROX. 0.4 MILES. TURN RIGHT AND GO WEST APPROX. 0.4 MILES. TURN LEFT AND GO SOUTH APPROX. 0.1 MILE. TURN RIGHT AND GO WEST APPROX. 0.2 MILES TO THIS LOCATION.



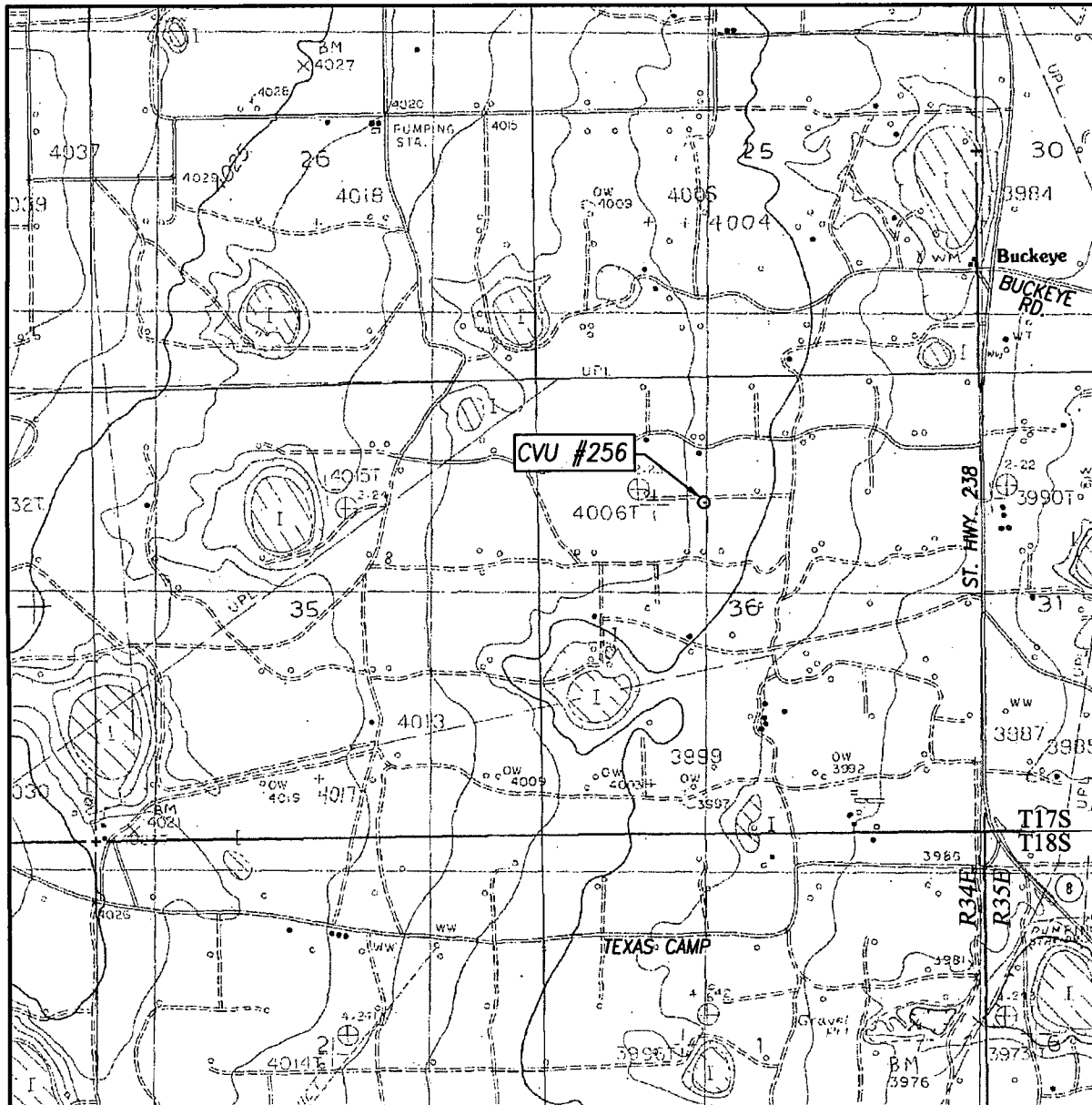
CHEVRON USA INC.

CVU #256 WELL
LOCATED 1480 FEET FROM THE NORTH LINE
AND 1990 FEET FROM THE WEST LINE OF SECTION 36,
TOWNSHIP 17 SOUTH, RANGE 34 EAST, N.M.P.M.,
LEA COUNTY, NEW MEXICO

PROVIDING SURVEYING SERVICES
 SINCE 1946
JOHN WEST SURVEYING COMPANY
 412 N. DAL PASO
 HOBBS, N.M. 88240
 (575) 393-3117 www.jwsc.biz

Survey Date: 4/16/13	CAD Date: 4/26/13	Drawn By: ACR
W.O. No.: 13110350	Rev: .	Rel. W.O.: Sheet 1 of 1

LOCATION VERIFICATION MAP



SCALE: 1" = 2000'

CONTOUR INTERVAL:
BUCKEYE, N.M. - 5'

SEC. 36 TWP. 17-S RGE. 34-E

SURVEY N.M.P.M.

COUNTY LEA STATE NEW MEXICO

DESCRIPTION 1480' FNL & 1990' FWL

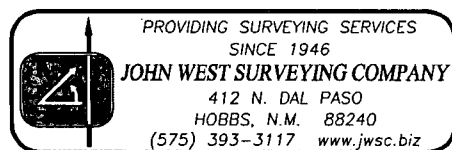
ELEVATION 4005'

OPERATOR CHEVRON USA INC.

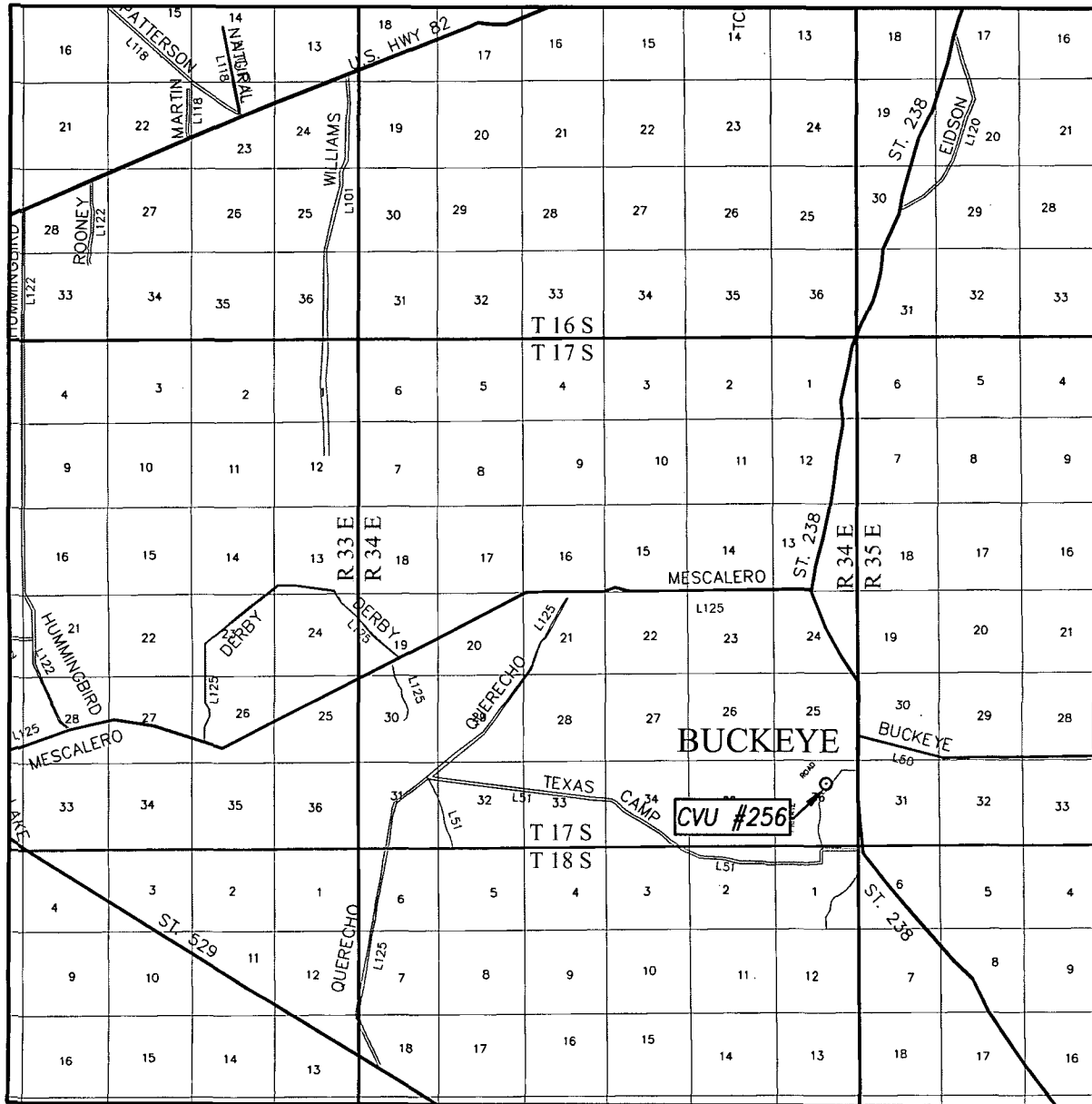
LEASE CVU

U.S.G.S. TOPOGRAPHIC MAP

BUCKEYE, N.M.



VICINITY MAP



SCALE: 1" = 2 MILES

SEC. 36 TWP. 17-S RGE. 34-E

SURVEY N.M.P.M.

COUNTY LEA STATE NEW MEXICO

DESCRIPTION 1480' FNL & 1990' FWL

ELEVATION 4005'

OPERATOR CHEVRON USA INC.

LEASE CVU

