

## HOBBS OCD

## DISTRICT I

1625 N. French Dr., Hobbs, NM 88240  
Phone (575) 393-8161 Fax: (575) 393-0720

## DISTRICT II

811 S. First St., Artesia, NM 88210  
Phone (575) 748-1283 Fax: (575) 748-0720

## DISTRICT III

1000 Rio Brazos Rd., Aztec, NM 87410  
Phone (505) 334-8178 Fax: (505) 334-8170

## DISTRICT IV

1220 S. St. Francis Dr., Santa Fe, NM 87505  
Phone (505) 476-3460 Fax: (505) 476-3462

MAY 08 2013

State of New Mexico  
Energy, Minerals and Natural Resources DepartmentForm C-102  
Revised August 1, 2011Submit one copy to appropriate  
District Office

## OIL CONSERVATION DIVISION

1220 South St. Francis Dr.  
Santa Fe, New Mexico 87505

RECEIVED

## WELL LOCATION AND ACREAGE DEDICATION PLAT

☐ AMENDED REPORT

API Number <b>30-025 41155</b>	Pool Code <b>22900</b>	Pool Name <b>Eunice, BLI-TU-DR, N</b>
Property Code <b>22503</b>	Property Name <b>NORTHEAST DRINKARD UNIT</b>	Well Number <b>564</b>
OGRID No. <b>873</b>	Operator Name <b>APACHE CORPORATION</b>	Elevation <b>3452</b>

## Surface Location

UL or lot No.	Section	Township	Range	Lot Idn	Feet from the	North/South line	Feet from the	East/West line	County
J	10	21 S	37 E		1345	SOUTH	2065	EAST	LEA

## Bottom Hole Location If Different From Surface

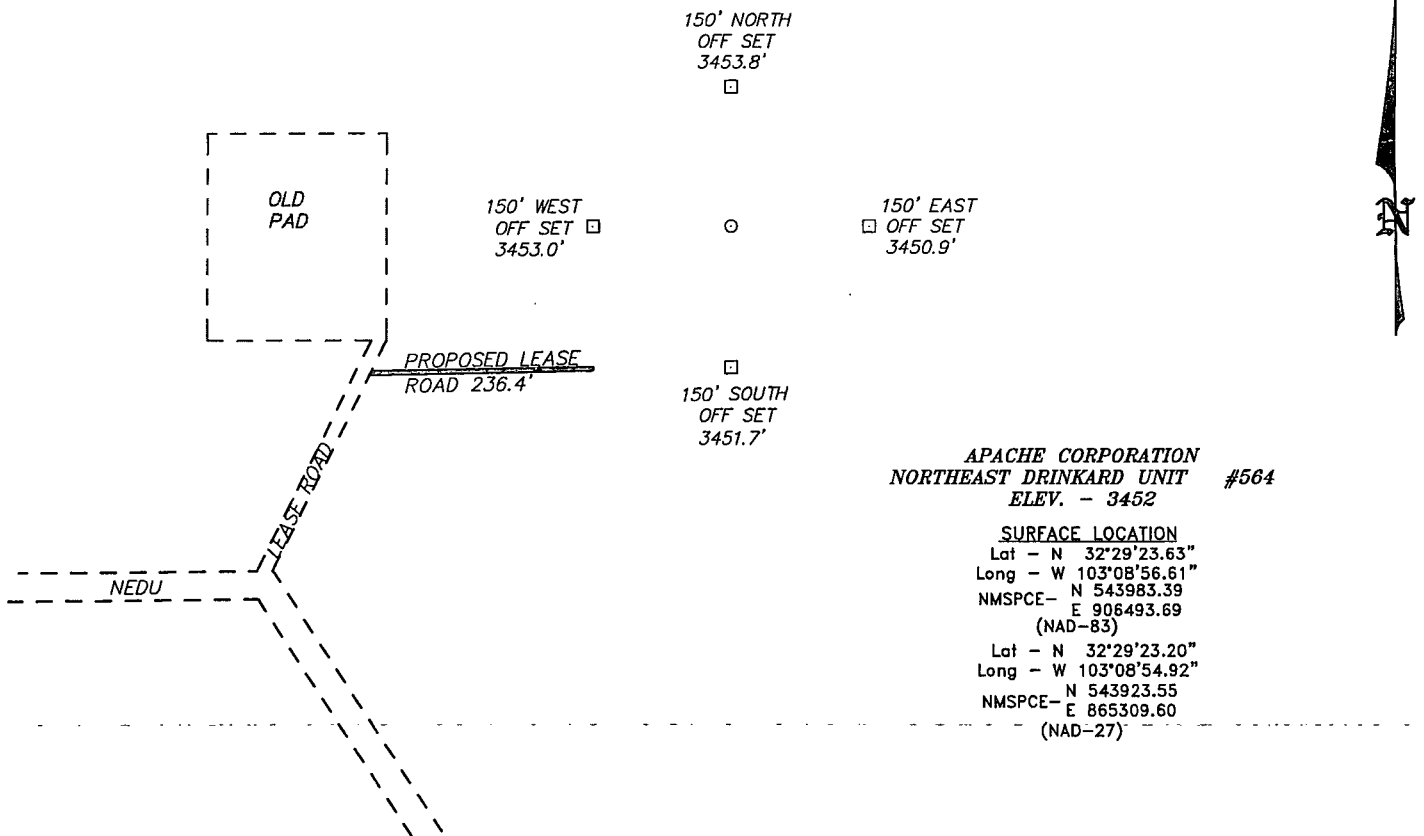
UL or lot No.	Section	Township	Range	Lot Idn	Feet from the	North/South line	Feet from the	East/West line	County
Dedicated Acres		Joint or Infill		Consolidation Code		Order No.			

NO ALLOWABLE WILL BE ASSIGNED TO THIS COMPLETION UNTIL ALL INTERESTS HAVE BEEN CONSOLIDATED  
OR A NON-STANDARD UNIT HAS BEEN APPROVED BY THE DIVISION

N 547879.62 E 903237.75 (NAD-83)			N 547943.84 E 908510.38 (NAD-83)	<b>OPERATOR CERTIFICATION</b> I hereby certify that the information contained herein is true and complete to the best of my knowledge and belief, and that this organization either owns a working interest or unleased mineral interest in the land including the proposed bottom hole location, or has a right to drill this well at this location pursuant to a contract with an owner of such a mineral or working interest, or to a voluntary pooling agreement or a compulsory pooling order heretofore entered by the division. <u>K Agee</u> 5/2/13 Signature Date <u>Kristina Agee</u> Printed Name <u>Kristina.agee@apachecorp.com</u> Email Address
Lat: 32.489778N Long: 103.148589E	<b>SURFACE LOCATION</b> Lat - N 32°29'23.63" Long - W 103°08'56.61" NMSPCE- N 543983.39 E 906493.69 (NAD-83) Lat - N 32°29'23.20" Long - W 103°08'54.92" NMSPCE- N 543923.55 E 865309.60 (NAD-27)		<b>SURVEYOR CERTIFICATION</b> I hereby certify that the well location shown on this plat was plotted from field notes of actual surveys made by me or under my supervision, and that the same is true and correct to the best of my belief. Date Surveyed Signature & Seal of Professional Surveyor 	
N 542593.26 E 903301.00 (NAD-83)			N 542667.81 E 908574.71 (NAD-83)	Certificate No. Gary L. Jones 7977 BASIN SURVEYS 28561

MAY 20 2013

SECTION 10, TOWNSHIP 21 SOUTH, RANGE 37 EAST, N.M.P.M.,  
LEA COUNTY, NEW MEXICO.

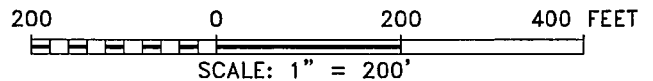


APACHE CORPORATION  
NORTHEAST DRINKARD UNIT #564  
ELEV. - 3452

SURFACE LOCATION

Lat - N 32°29'23.63"  
Long - W 103°08'56.61"  
NMSPCE- N 543983.39  
E 906493.69  
(NAD-83)  
Lat - N 32°29'23.20"  
Long - W 103°08'54.92"  
NMSPCE- N 543923.55  
E 865309.60  
(NAD-27)

WELL IS LOCATED 4 MILES NORTH OF EUNICE, NEW MEXICO.



Directions to Location:

FROM STATE ROAD 207 AND NORTHEAST DRINKARD  
UNIT ROAD GO EAST .5 MILES TURN NORTHEAST GO  
.1 MILE TO PROPOSED LOCATION.

**BASIN SURVEYS** P.O. BOX 1786 - HOBBS, NEW MEXICO

W.O. Number: 28561 Drawn By: D. JONES

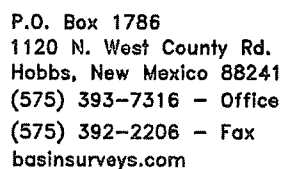
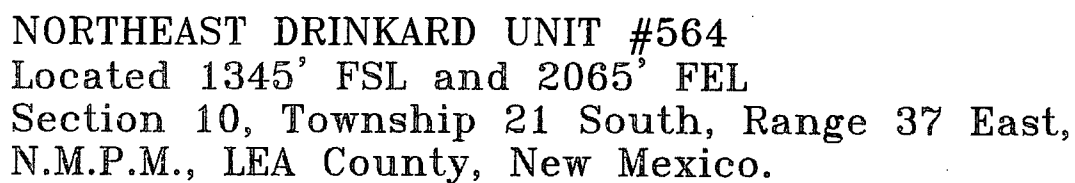
Date: 04-29-2013 Disk: DAJ 28561

**APACHE CORPORATION**

REF: NORTHEAST DRINKARD UNIT #564/ WELL PAD TOPO

THE NORTHEAST DRINKARD UNIT #564 LOCATED 1345'  
FROM THE SOUTH LINE AND 2065' FROM THE EAST LINE OF  
SECTION 10, TOWNSHIP 21 SOUTH, RANGE 37 EAST,  
N.M.P.M., LEA COUNTY, NEW MEXICO.

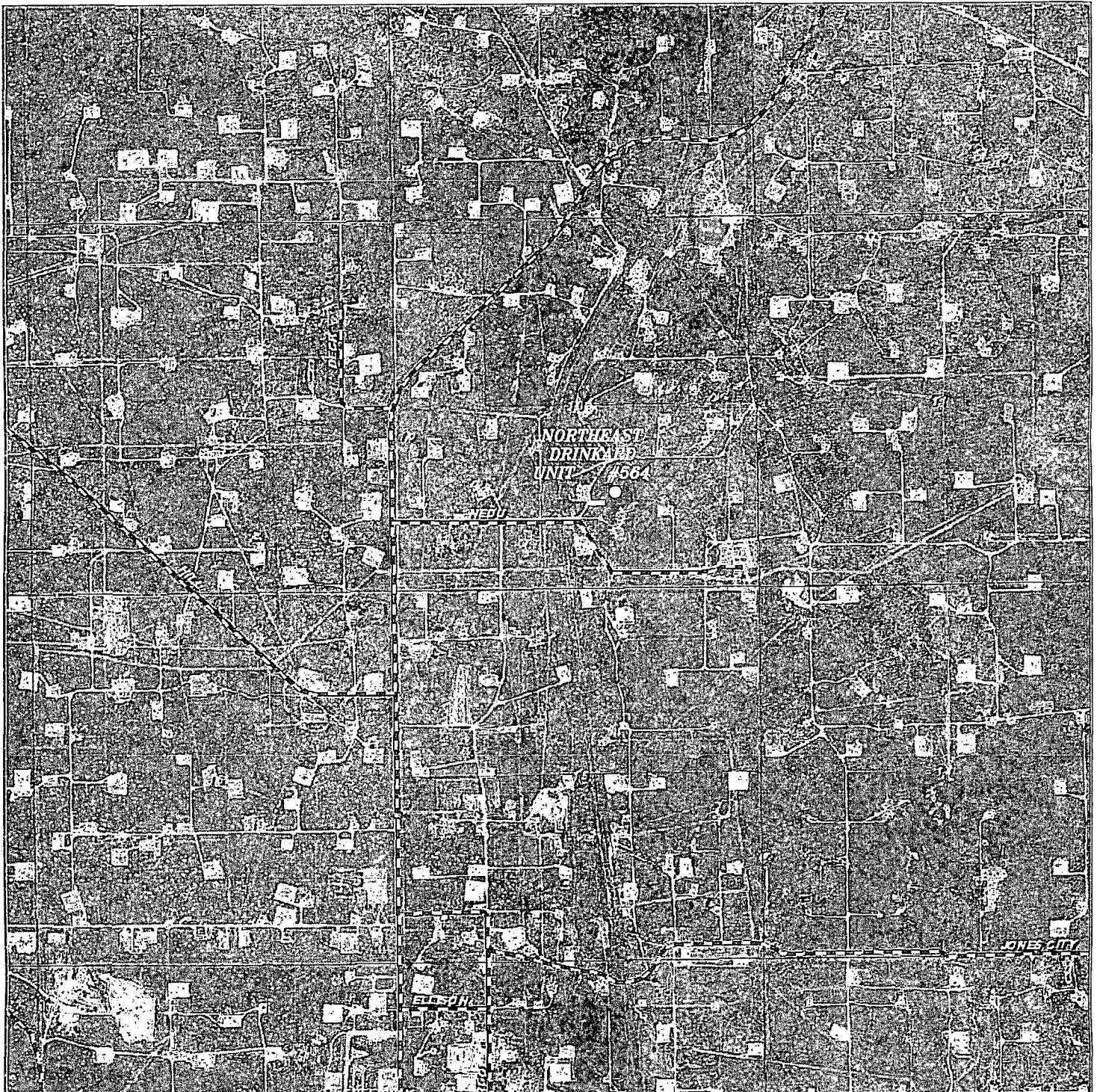
Survey Date: 04-13-2013 Sheet 1 of 1 Sheets



Date: 04-29-2013

APACHE  
CORPORATION





**NORTHEAST DRINKARD UNIT #564**  
 Located 1345' FSL and 2065' FEL  
 Section 10, Township 21 South, Range 37 East,  
 N.M.P.M., LEA County, New Mexico.

**basin**  
**surveys**  
 focused on excellence  
 in the oilfield

P.O. Box 1786  
 1120 N. West County Rd.  
 Hobbs, New Mexico 88241  
 (575) 393-7316 - Office  
 (575) 392-2206 - Fax  
 basinsurveys.com

W.O. Number: DAJ 28561

Scale: 1" = 2000'

YELLOW TINT - USA LAND  
 BLUE TINT - STATE LAND  
 NATURAL COLOR - FEE LAND

**APACHE**  
**CORPORATION**