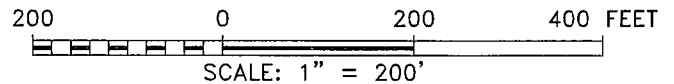
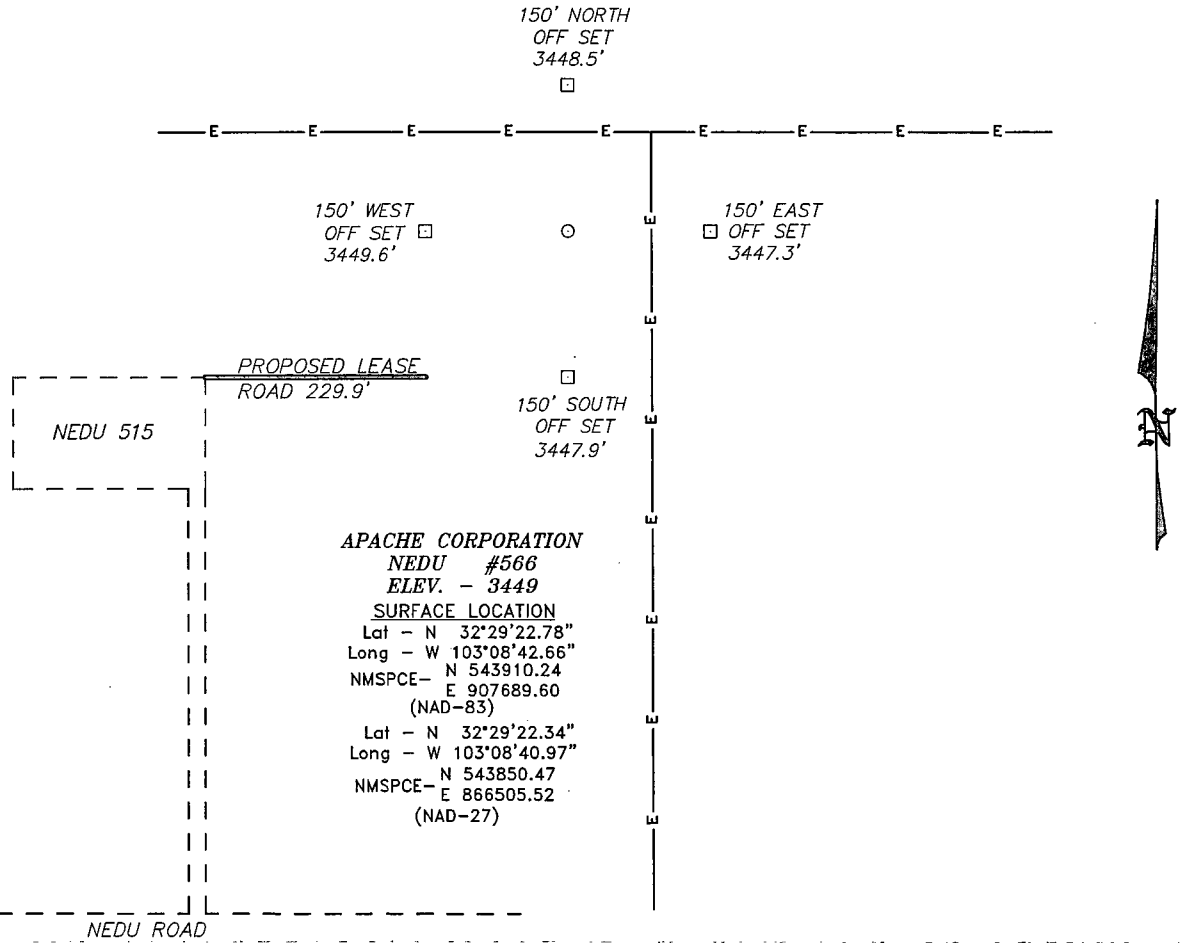


MAY 20 2013

SECTION 10, TOWNSHIP 21 SOUTH, RANGE 37 EAST, N.M.P.M.,
LEA COUNTY, NEW MEXICO.



Directions to Location:

FROM STATE ROAD 207 AND NEDU ROAD GO EAST .7
MILES TURN NORTH TO PROPOSED LOCATION.

BASIN SURVEYS P.O. BOX 1786 - HOBBS, NEW MEXICO

W.O. Number: 28564 Drawn By: D. JONES

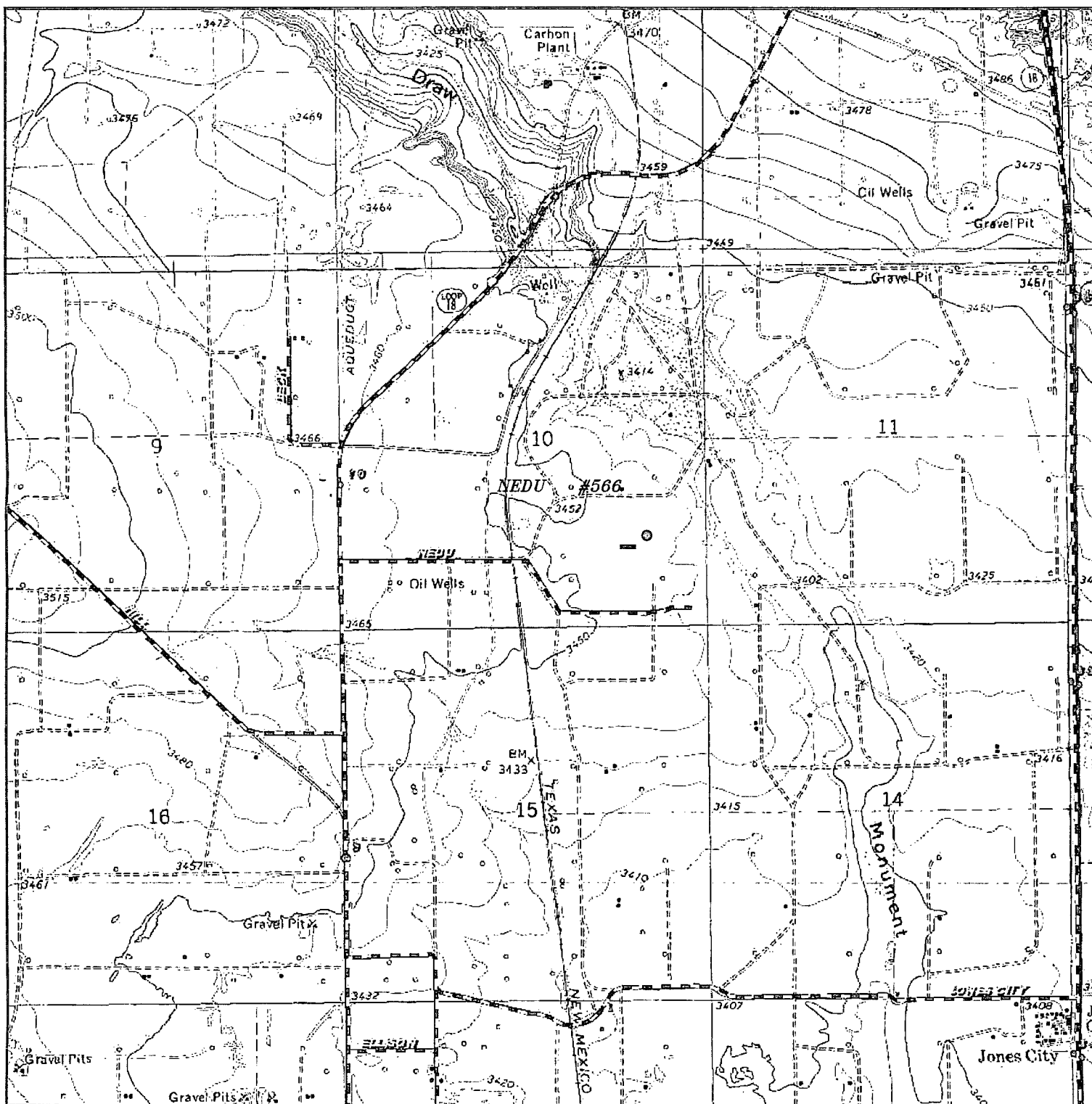
Date: 04-29-2013 Disk: DAJ 28564

APACHE CORPORATION

REF: NEDU #566/ WELL PAD TOPO

THE NEDU #566 LOCATED 1255'
FROM THE SOUTH LINE AND 870' FROM THE EAST LINE OF
SECTION 10, TOWNSHIP 21 SOUTH, RANGE 37 EAST,
N.M.P.M., LEA COUNTY, NEW MEXICO.

Survey Date: 04-13-2013 Sheet 1 of 1 Sheets



NEDU #566

Located 1255' FSL and 870' FEL
 Section 10, Township 21 South, Range 37 East,
 N.M.P.M., LEA County, New Mexico.

basin
surveys
 focused on excellence
 in the oilfield

P.O. Box 1786
 1120 N. West County Rd.
 Hobbs, New Mexico 88241
 (575) 393-7316 - Office
 (575) 392-2206 - Fax
 basinsurveys.com

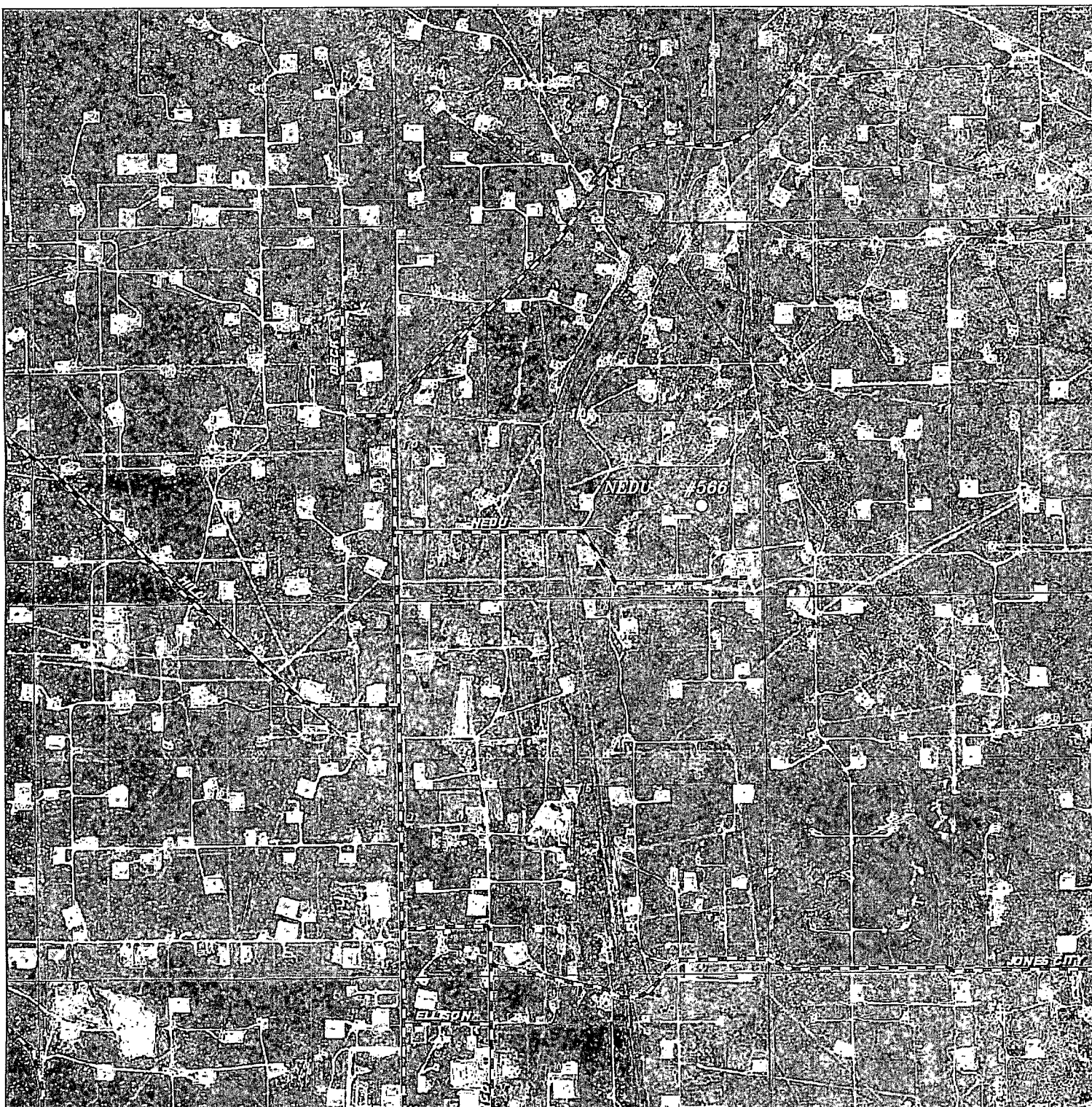
W.O. Number: DAJ 28564

Survey Date: 04-13-2013

Scale: 1" = 2000'

Date: 04-29-2013

APACHE
CORPORATION



NEDU #566

Located 1255' FSL and 870' FEL

Section 10, Township 21 South, Range 37 East,
N.M.P.M., LEA County, New Mexico.

basin
surveys

focused on excellence
in the oilfield

P.O. Box 1786
1120 N. West County Rd.
Hobbs, New Mexico 88241
(575) 393-7316 - Office
(575) 392-2206 - Fax
basinsurveys.com

W.O. Number: DAJ 28564

Scale: 1" = 2000'

YELLOW TINT - USA LAND
BLUE TINT - STATE LAND
NATURAL COLOR - FEE LAND

APACHE
CORPORATION