

DISTRICT I
1825 N. French Dr., Hobbs, NM 88240
Phone (505) 393-8161 Fax: (505) 393-0720

DISTRICT II
811 S. First St., Artesia, NM 88210
Phone (505) 748-1283 Fax: (505) 748-8170

DISTRICT III
1000 Rio Brazos Rd., Aztec, NM 87410
Phone (505) 334-6178 Fax: (505) 334-8170

DISTRICT IV
1220 S. St. Francis Dr., Santa Fe, NM 87505
Phone (505) 476-3400 Fax: (505) 476-3462

HOEBS OCD

MAY 08 2013

RECEIVED

State of New Mexico
Energy, Minerals and Natural Resources Department

Form C-102
Revised August 1, 2011

Submit one copy to appropriate
District Office

OIL CONSERVATION DIVISION

1220 South St. Francis Dr.
Santa Fe, New Mexico 87505

WELL LOCATION AND ACREAGE DEDICATION PLAT

☐ AMENDED REPORT

| | | |
|----------------------------|--|-----------------------------------|
| API Number 30-025-41157 | Pool Code 22900 | Pool Name Eunice, BLI-TU-DR, N |
| Property Code 22503 | Property Name NORTHEAST DRINKARD UNIT | Well Number 567 |
| OGRID No. 873 | Operator Name APACHE CORPORATION | Elevation 3410 |

Surface Location

| | | | | | | | | | |
|--------------------|---------------|------------------|---------------|---------|-----------------------|---------------------------|----------------------|------------------------|---------------|
| UL or lot No. M | Section 11 | Township 21 S | Range 37 E | Lot Idn | Feet from the 1275 | North/South line SOUTH | Feet from the 900 | East/West line WEST | County LEA |
|--------------------|---------------|------------------|---------------|---------|-----------------------|---------------------------|----------------------|------------------------|---------------|

Bottom Hole Location If Different From Surface

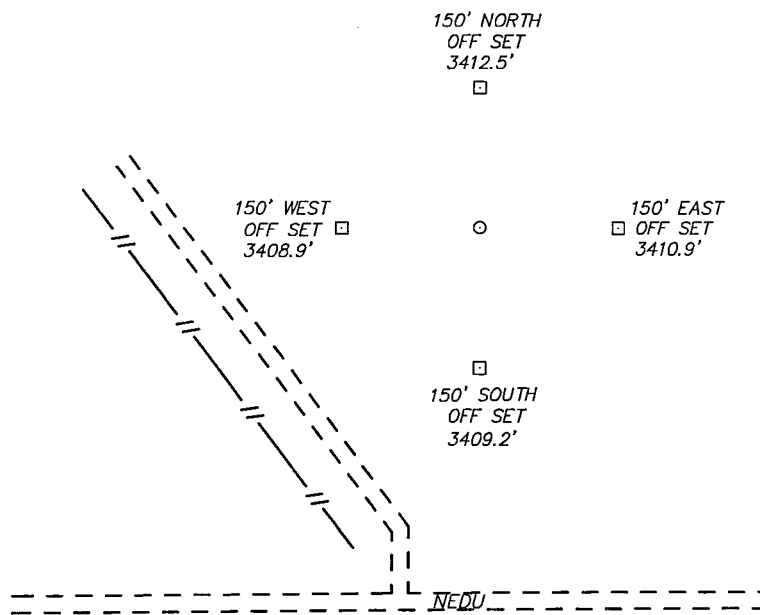
| | | | | | | | | | |
|--|---------|----------|-------|---------|---------------|------------------|---------------|----------------|--------|
| UL or lot No. | Section | Township | Range | Lot Idn | Feet from the | North/South line | Feet from the | East/West line | County |
| Dedicated Acres Joint or Infill Consolidation Code Order No. | | | | | | | | | |

NO ALLOWABLE WILL BE ASSIGNED TO THIS COMPLETION UNTIL ALL INTERESTS HAVE BEEN CONSOLIDATED
OR A NON-STANDARD UNIT HAS BEEN APPROVED BY THE DIVISION

| | | | | |
|--|---|--|--|--|
| N 547943.84 E 908510.38 (NAD-83) | | | N 548013.51 E 913795.18 (NAD-83) | OPERATOR CERTIFICATION I hereby certify that the information contained herein is true and complete to the best of my knowledge and belief, and that this organization either owns a working interest or unleased mineral interest in the land including the proposed bottom hole location or has a right to drill this well at this location pursuant to a contract with an owner of such a mineral or working interest, or to a voluntary pooling agreement or a compulsory pooling order heretofore entered by the division. Signature <u>K Agee</u> Date <u>5/2/13</u> Printed Name <u>Kristina Agee</u> Email Address <u>Kristina.agee@apachecorp.com</u> |
| | | | | SURVEYOR CERTIFICATION I hereby certify that the well location shown on this plat was plotted from field notes of actual surveys made by me or under my supervision, and that the same is true and correct to the best of my belief. Date Surveyed <u>May 1, 2013</u> Signature & Seal of Professional Surveyor <u>Gary L. Jones</u> Certificate No. <u>Gary L. Jones 7977</u> BASIN SURVEYS <u>28551</u> |
| Lat: 32.489608 Long: 103.138975 | SURFACE LOCATION Lat - N 32°29'23.02" Long - W 103°08'22.00" NMSPCE- N 543954.81 E 909458.94 (NAD-83) Lat - N 32°29'22.59" Long - W 103°08'20.31" NMSPCE- N 543895.15 E 868274.87 (NAD-27) | | | |
| 900' 1275' | | | | |
| N 542667.81 E 908574.71 (NAD-83) | | | N 542739.48 E 913850.89 (NAD-83) | |

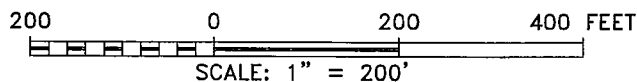
MAY 20 2013

SECTION 11, TOWNSHIP 21 SOUTH, RANGE 37 EAST, N.M.P.M.,
LEA COUNTY, NEW MEXICO.



APACHE CORPORATION
NORTHEAST DRINKARD UNIT #567
ELEV. - 3410
SURFACE LOCATION
Lat - N 32°29'23.02"
Long - W 103°08'22.00"
NMSPCE- N 543954.81
E 909458.94
(NAD-83)
Lat - N 32°29'22.59"
Long - W 103°08'20.31"
NMSPCE- N 543895.15
E 868274.87
(NAD-27)

WELL IS LOCATED 4 MILES NORTH OF EUNICE, NEW MEXICO.



Directions to Location:

FROM STATE ROAD 207 AND NEDU ROAD GO EAST
1.2 MILES TURN NORTH TO PROPOSED LOCATION.

APACHE CORPORATION

REF: NORTHEAST DRINKARD UNIT #567/ WELL PAD TOPO

THE NORTHEAST DRINKARD UNIT #567 LOCATED 1275'
FROM THE SOUTH LINE AND 900' FROM THE WEST LINE OF
SECTION 11, TOWNSHIP 21 SOUTH, RANGE 37 EAST,
N.M.P.M., LEA COUNTY, NEW MEXICO.

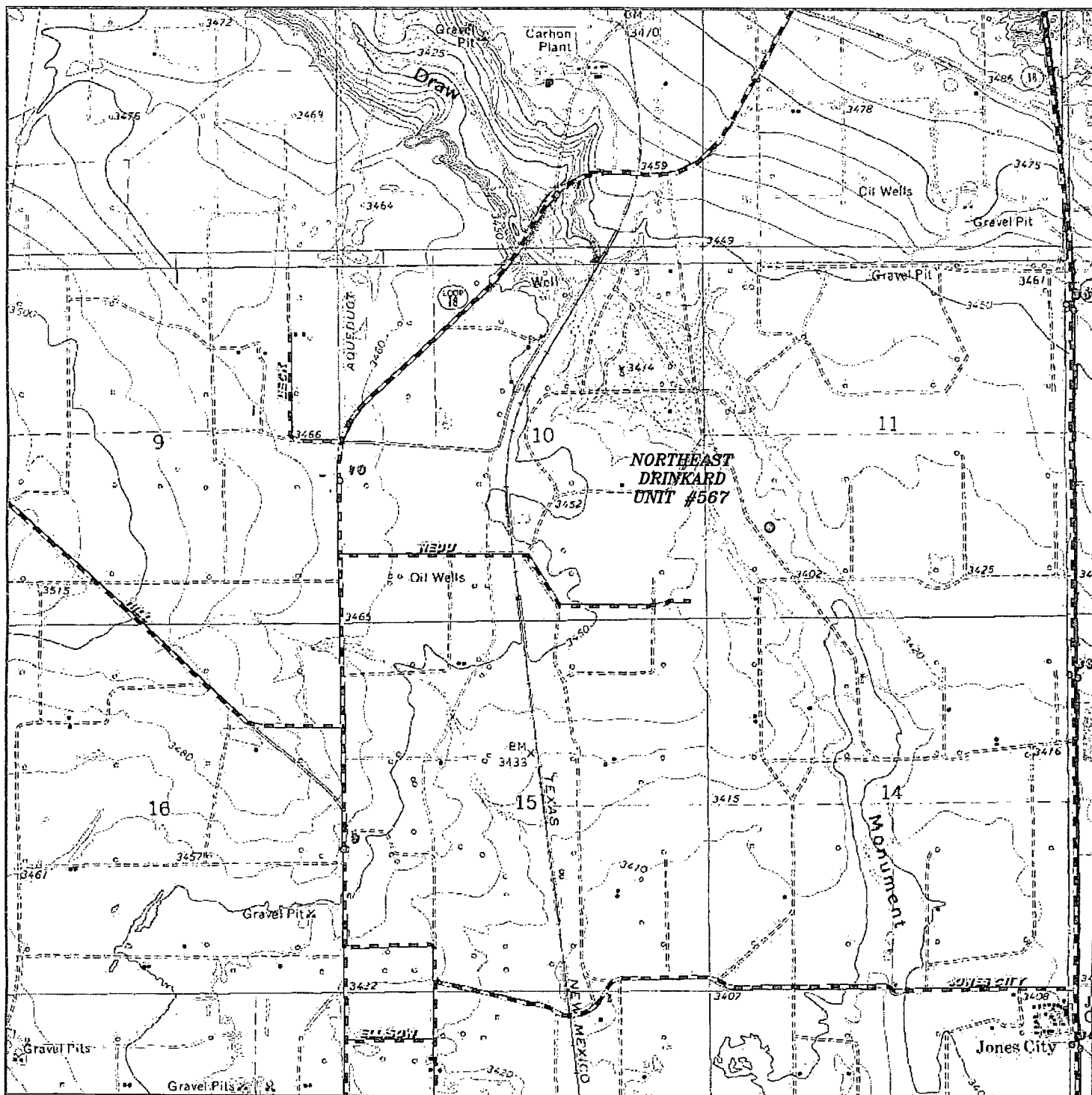
BASIN SURVEYS P.O. BOX 1786 - HOBBS, NEW MEXICO

W.O. Number: 28551 Drawn By: D. JONES

Date: 04-30-2013 Disk: DAJ 28551

Survey Date: 04-13-2013

Sheet 1 of 1 Sheets



NORTHEAST DRINKARD UNIT #567
 Located 1275' FSL and 900' FWL
 Section 11, Township 21 South, Range 37 East,
 N.M.P.M., LEA County, New Mexico.

basin
surveys
 focused on excellence
 in the oilfield

P.O. Box 1786
 1120 N. West County Rd.
 Hobbs, New Mexico 88241
 (575) 393-7316 - Office
 (575) 392-2206 - Fax
 basinsurveys.com

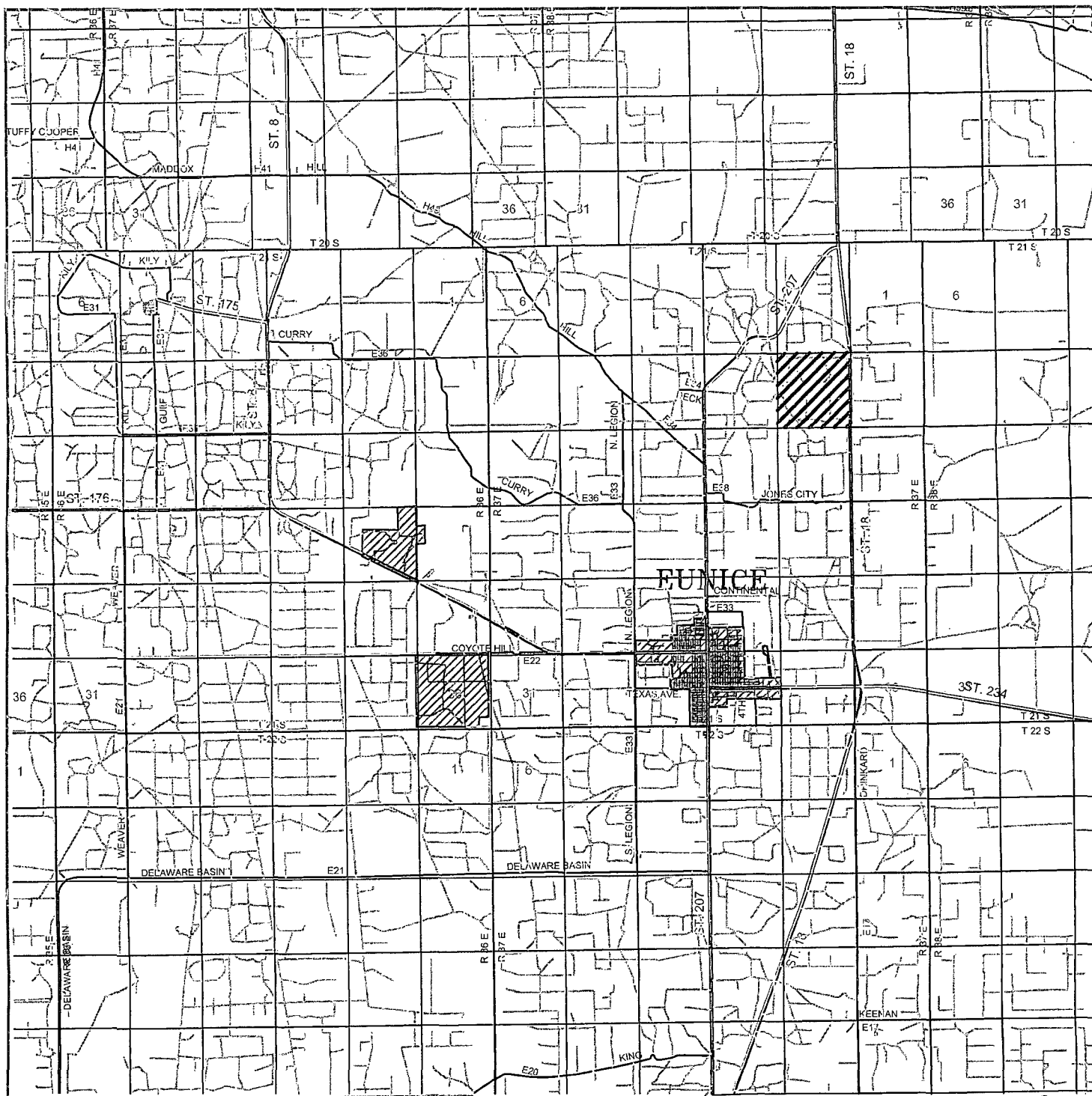
W.O. Number: DAJ 28551

Survey Date: 04-13-2013

Scale: 1" = 2000'

Date: 04-30-2013

APACHE
CORPORATION



NORTHEAST DRINKARD UNIT #567

Located 1275' FSL and 900' FWL

Section 11, Township 21 South, Range 37 East,
N.M.P.M., LEA County, New Mexico.



focused on excellence
in the oilfield

P.O. Box 1786
1120 N. West County Rd.
Hobbs, New Mexico 88241
(575) 393-7316 - Office
(575) 392-2206 - Fax
basinsurveys.com

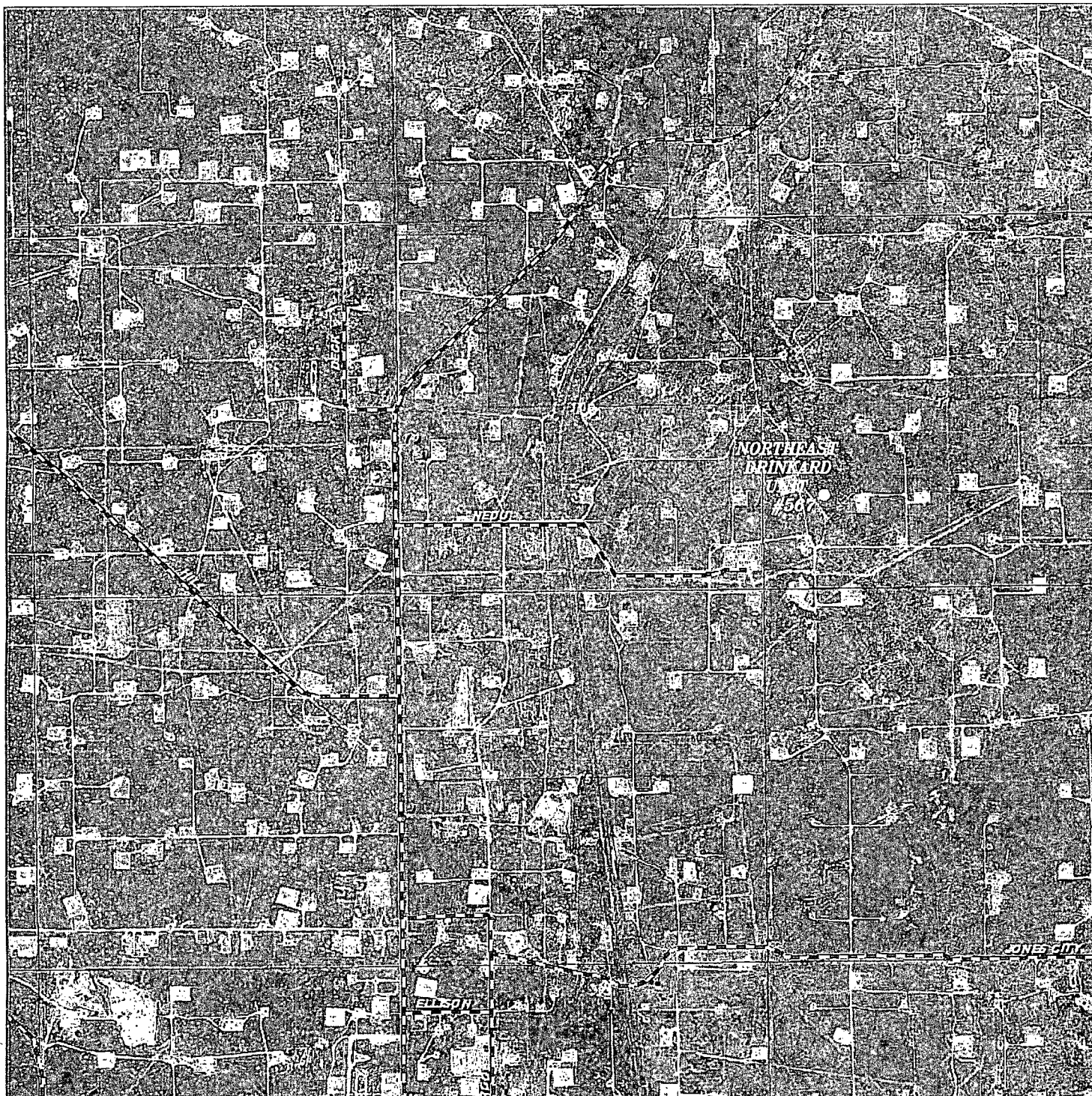
W.O. Number: DAJ 28551

Survey Date: 04-13-2013

Scale: 1" = 2 Miles

Date: 04-30-2013

**APACHE
CORPORATION**



NORTHEAST DRINKARD UNIT #567
 Located 1275' FSL and 900' FWL
 Section 11, Township 21 South, Range 37 East,
 N.M.P.M., LEA County, New Mexico.

basin
surveys
 focused on excellence
 in the oilfield

P.O. Box 1786
 1120 N. West County Rd.
 Hobbs, New Mexico 88241
 (575) 393-7316 - Office
 (575) 392-2206 - Fax
basinsurveys.com

W.O. Number: DAJ 28551

Scale: 1" = 2000'

YELLOW TINT - USA LAND
 BLUE TINT - STATE LAND
 NATURAL COLOR - FEE LAND

APACHE
CORPORATION