

HOBBS OCD

DISTRICT I

1825 N. French Dr., Hobbs, NM 88240
Phone (505) 393-0161 Fax: (505) 398-0770

DISTRICT II

811 S. First St., Artesia, NM 88210
Phone (505) 748-1283 Fax: (505) 748-8728

DISTRICT III

1000 Rio Brazos Rd., Aztec, NM 87410
Phone (505) 334-6178 Fax: (505) 334-6170

DISTRICT IV

1820 S. St. Francis Dr., Santa Fe, NM 87505
Phone (505) 476-8400 Fax: (505) 476-3468

MAY 07 2013

State of New Mexico
Energy, Minerals and Natural Resources Department

Form C-102
Revised August 1, 2011

Submit one copy to appropriate
District Office

RECEIVED

OIL CONSERVATION DIVISION
1220 South St. Francis Dr.
Santa Fe, New Mexico 87505

WELL LOCATION AND ACREAGE DEDICATION PLAT

☐ AMENDED REPORT

API Number 30-025-41160	Pool Code 22900	Pool Name Eunice; BLI-TU-DR, North
Property Code 22503	Property Name NORTHEAST DRINKARD UNIT	Well Number 285
OGRID No. 873	Operator Name APACHE CORPORATION	Elevation 3499

Surface Location

UL or lot No.	Section	Township	Range	Lot Idn	Feet from the	North/South line	Feet from the	East/West line	County
LOT 15	2	21 S	37 E		3600	SOUTH	2350	EAST	LEA

Bottom Hole Location If Different From Surface

UL or lot No.	Section	Township	Range	Lot Idn	Feet from the	North/South line	Feet from the	East/West line	County

Dedicated Acres 40	Joint or Infill	Consolidation Code	Order No.
------------------------------	-----------------	--------------------	-----------

NO ALLOWABLE WILL BE ASSIGNED TO THIS COMPLETION UNTIL ALL INTERESTS HAVE BEEN CONSOLIDATED
OR A NON-STANDARD UNIT HAS BEEN APPROVED BY THE DIVISION

SURFACE LOCATION
 Lat - N 32°30'38.28"
 Long - W 103°07'58.39"
 NMSPCE- N 551581.81
 E 911396.04
 (NAD-83)
 Lat - N 32°30'37.84"
 Long - W 103°07'56.69"
 NMSPCE- N 551522.23
 E 870212.30
 (NAD-27)

32.510511N
103.132414W

OPERATOR CERTIFICATION
 I hereby certify that the information contained herein is true and complete to the best of my knowledge and belief, and that this organization either owns a working interest or unleased mineral interest in the land including the proposed bottom hole location or has a right to drill this well at this location pursuant to a contract with an owner of such a mineral or working interest, or to a voluntary pooling agreement or a compulsory pooling order heretofore entered by the division.
Michelle Cooper 5-6-13
 Signature Date
Michelle Cooper
 Printed Name
michelle.cooper@apachecorp.com
 Email Address

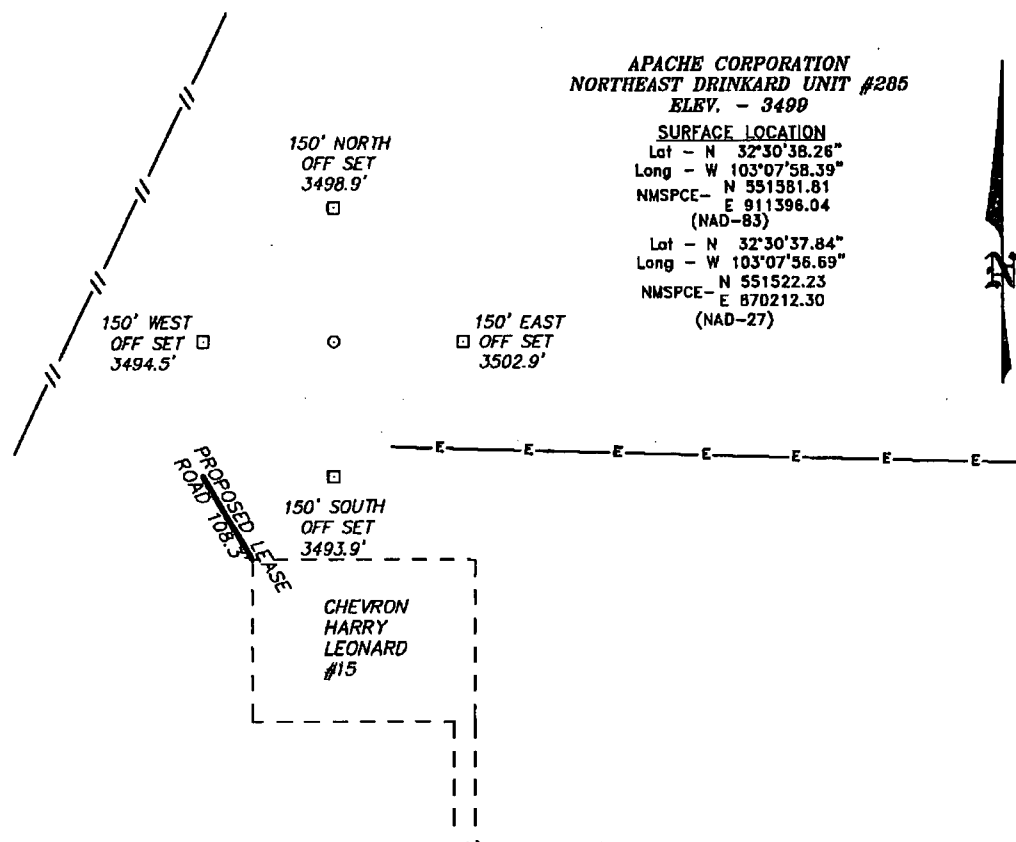
SURVEYOR CERTIFICATION
 I hereby certify that the well location shown on this plat was plotted from field notes of actual surveys made by me or under my supervision and that the same are true and correct to the best of my belief.

 Date Surveyed
 Signature of Surveyor
 Professional Land Surveyor

W.O. No. 28562
 Certificate No. Gary L. Jones 7977
 BASIN SURVEYS 28562

MAY 20 2013

SECTION 2, TOWNSHIP 21 SOUTH, RANGE 37 EAST, N.M.P.M.,
LEA COUNTY, NEW MEXICO.



APACHE CORPORATION
NORTHEAST DRINKARD UNIT #285
ELEV. - 3490

SURFACE LOCATION
Lat - N 32°30'38.26"
Long - W 103°07'58.39"
NMSPCE - N 551581.81
E 911396.04
(NAD-83)
Lat - N 32°30'37.84"
Long - W 103°07'56.69"
NMSPCE - N 551522.23
E 870212.30
(NAD-27)

WELL IS LOCATED 4 MILES NORTH OF EUNICE, NEW MEXICO.

200 0 200 400 FEET
SCALE: 1" = 200'

Directions to Location:

AT CATTLE GUARD #14 ON STATE ROAD 207 GO
EAST .5 MILES TURN NORTH TO PROPOSED
LOCATION.

BASIN SURVEYS P.O. BOX 1786 - HOBBS, NEW MEXICO

W.O. Number: 28562 Drawn By: D. JONES

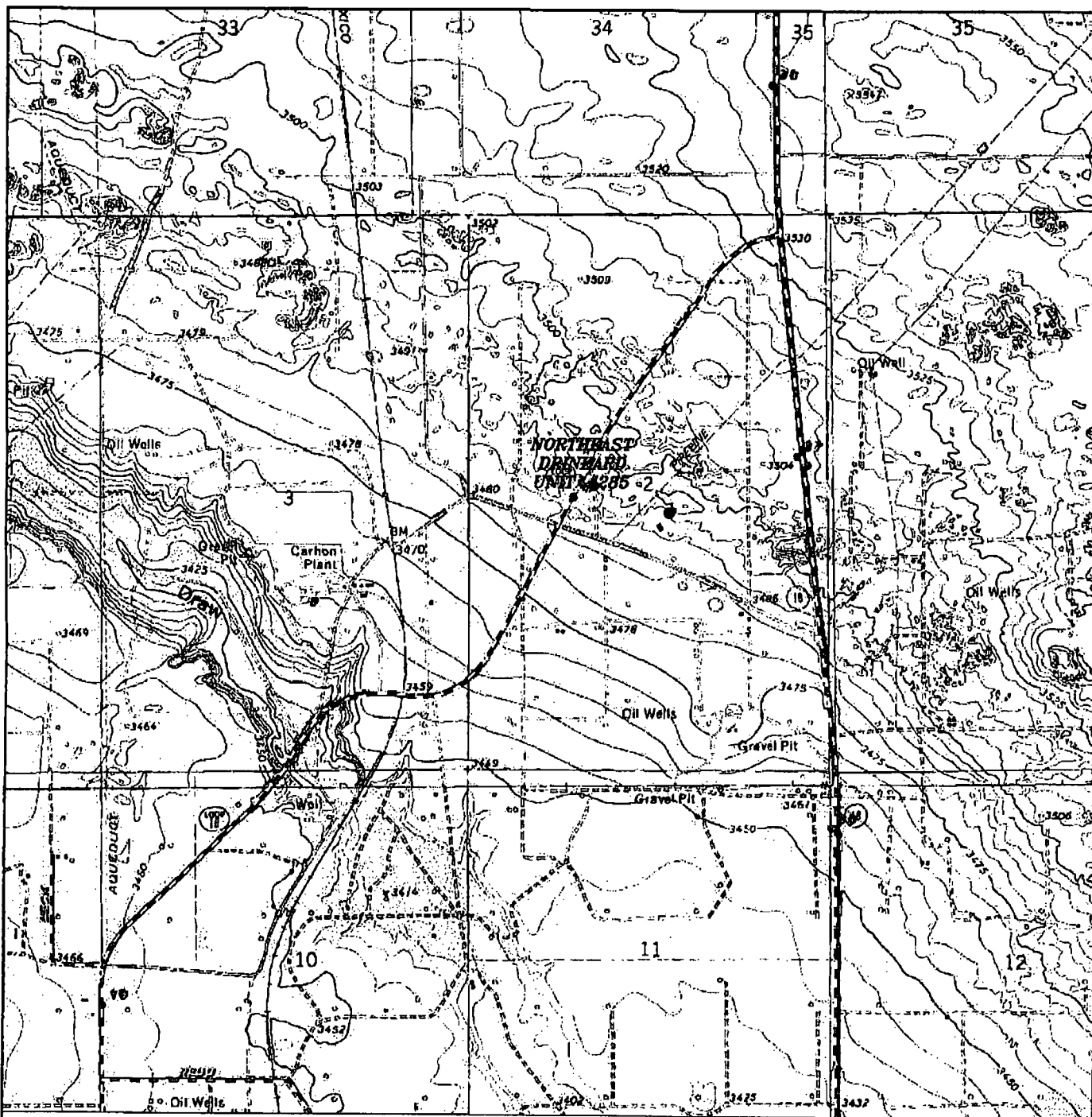
Date: 04-30-2013 Disk: DAJ 28562

APACHE CORPORATION

REF: NORTHEAST DRINKARD UNIT #285/ WELL PAD TOPO

THE NORTHEAST DRINKARD UNIT #285 LOCATED 3600'
FROM THE SOUTH LINE AND 2350' FROM THE EAST LINE OF
SECTION 2, TOWNSHIP 21 SOUTH, RANGE 37 EAST,
N.M.P.M., LEA COUNTY, NEW MEXICO.

Survey Date: 04-13-2013 Sheet 1 of 1 Sheets



NORTHEAST DRINKARD UNIT #285
 Located 3600' FSL and 2350' FEL
 Section 2, Township 21 South, Range 37 East,
 N.M.P.M., LEA County, New Mexico.

basin
surveys
 focused on excellence
 in the oilfield

P.O. Box 1786
 1120 N. West County Rd.
 Hobbs, New Mexico 88241
 (575) 393-7316 - Office
 (575) 392-2206 - Fax
 basin-surveys.com

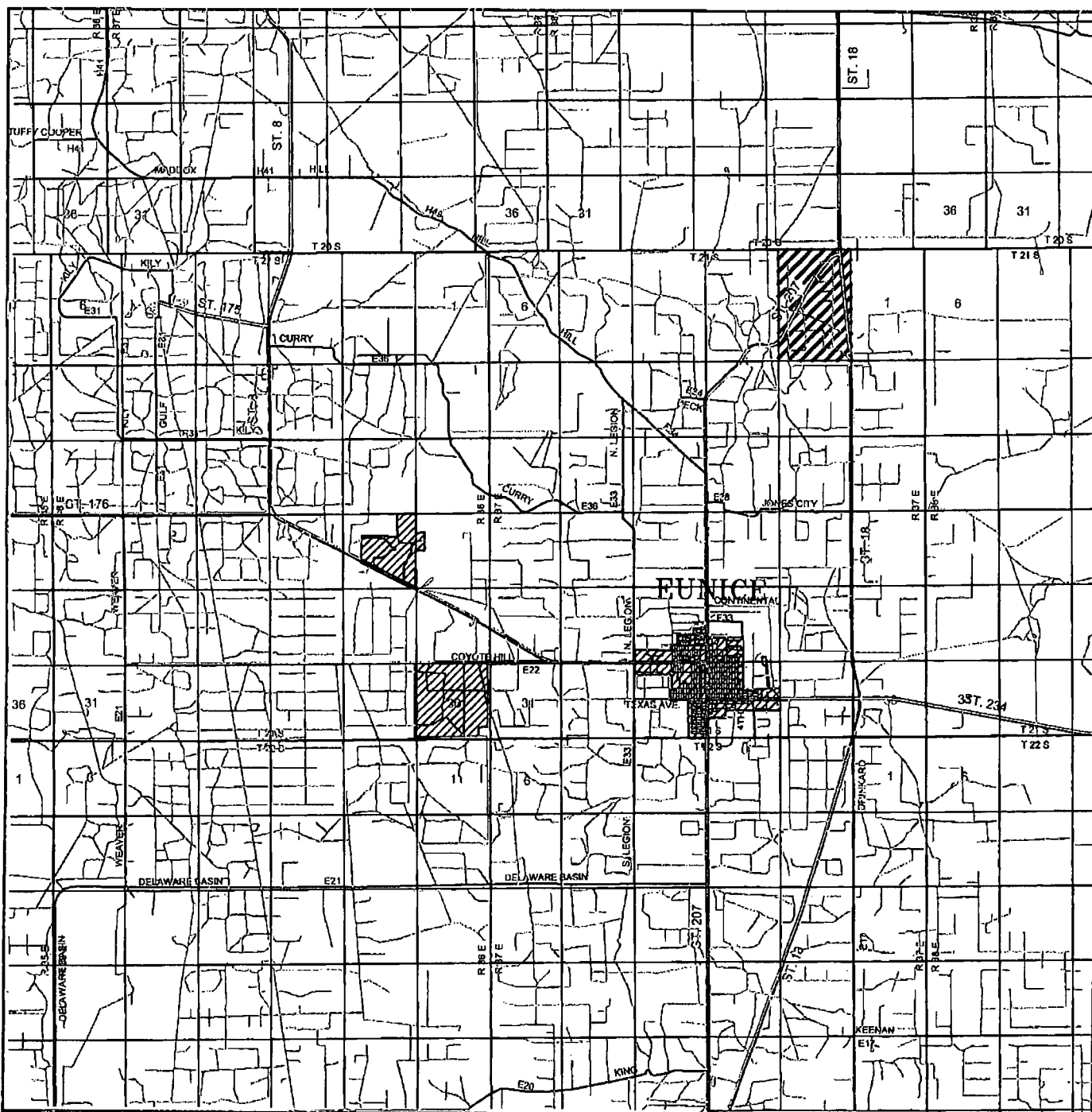
W.O. Number: DAJ 28562

Survey Date: 04-13-2013

Scale: 1" = 2000'

Date: 04-30-2013

APACHE
CORPORATION



NORTHEAST DRINKARD UNIT #285
 Located 3600' FSL and 2350' FEL
 Section 2, Township 21 South, Range 37 East,
 N.M.P.M., LEA County, New Mexico.

basin
surveys
 focused on excellence
 in the oilfield

P.O. Box 1786
 1120 N. West County Rd.
 Hobbs, New Mexico 88241
 (575) 393-7316 - Office
 (575) 392-2206 - Fax
 basin-surveys.com

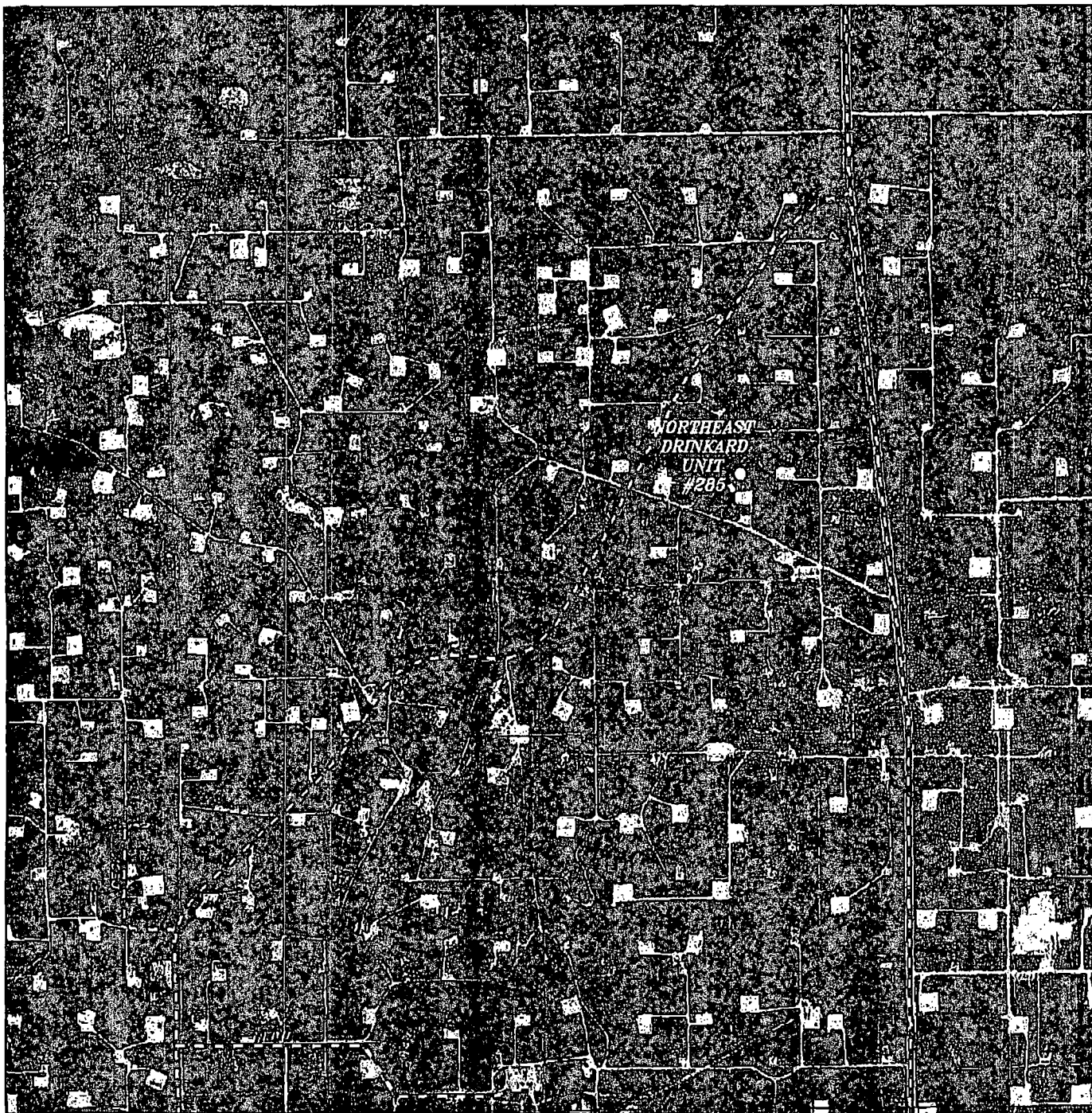
W.O. Number: DAJ 28562

Survey Date: 04-13-2013

Scale: 1" = 2 Miles

Date: 04-30-2013

APACHE
CORPORATION



NORTHEAST DRINKARD UNIT #285
Located 3600' FSL and 2350' FEL
Section 2, Township 21 South, Range 37 East,
N.M.P.M., LEA County, New Mexico.

basin
surveys
focused on excellence
in the oilfield

P.O. Box 1786
1120 N. West County Rd.
Hobbs, New Mexico 88241
(575) 393-7316 - Office
(575) 392-2206 - Fax
basinsurveys.com

W.O. Number: DAJ 28562

Scale: 1" = 2000'

YELLOW TINT - USA LAND
BLUE TINT - STATE LAND
NATURAL COLOR - FEE LAND

APACHE
CORPORATION