

DISTRICT I
1625 N. French Dr., Hobbs, NM 88240
Phone (575) 593-5161 Fax: (575) 593-0720

DISTRICT II
611 S. First St., Artesia, NM 88210
Phone (575) 740-1253 Fax: (575) 740-0720

DISTRICT III
1000 Rio Brazos Rd., Aztec, NM 87410
Phone (505) 334-5178 Fax: (505) 334-0170

DISTRICT IV
1220 S. St. Francis Dr., Santa Fe, NM 87505
Phone (505) 476-5480 Fax: (505) 476-5425

State of New Mexico
Energy, Minerals and Natural Resources Department

OIL CONSERVATION DIVISION
1220 South St. Francis Dr.
Santa Fe, New Mexico 87505

HOBBS OCD

Form C-102
Revised August 1, 2011
Submit one copy to appropriate District Office

MAY 07 2013

RECEIVED

WELL LOCATION AND ACREAGE DEDICATION PLAT

☐ AMENDED REPORT

API Number 30-025-41161	Pool Code 22900	Pool Name Eunice; BLI-TU-DR, North
Property Code 22503	Property Name NORTHEAST DRINKARD UNIT	Well Number 562
OGRID No. 873	Operator Name APACHE CORPORATION	Elevation 3462

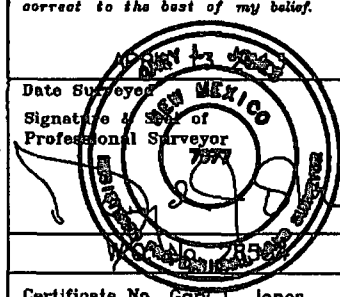
Surface Location

UL or lot No.	Section	Township	Range	Lot Idn	Feet from the	North/South line	Feet from the	East/West line	County
L	10	21 S	37 E		1350	SOUTH	850	WEST	LEA

Bottom Hole Location If Different From Surface

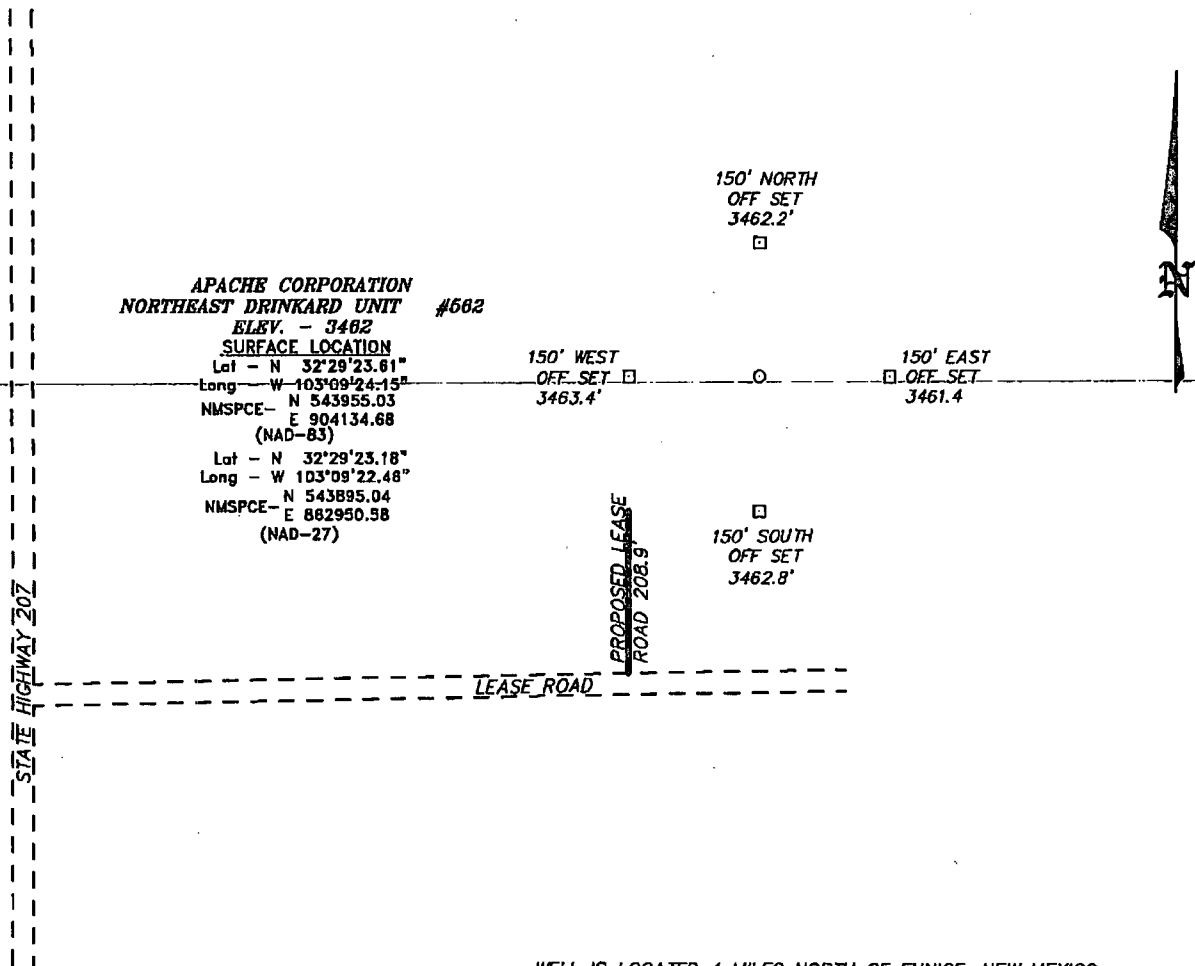
UL or lot No.	Section	Township	Range	Lot Idn	Feet from the	North/South line	Feet from the	East/West line	County
Dedicated Acres 40	Joint or Infill	Consolidation Code	Order No.						

NO ALLOWABLE WILL BE ASSIGNED TO THIS COMPLETION UNTIL ALL INTERESTS HAVE BEEN CONSOLIDATED OR A NON-STANDARD UNIT HAS BEEN APPROVED BY THE DIVISION

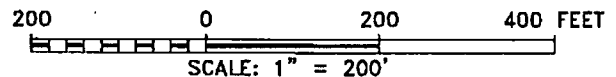
N 547879.62 E 903237.75 (NAD-83)		N 547943.84 E 908510.38 (NAD-83)	OPERATOR CERTIFICATION I hereby certify that the information contained herein is true and complete to the best of my knowledge and belief, and that this organization either owns a working interest or unleased mineral interest in the land including the proposed bottom hole location or has a right to drill this well at this location pursuant to a contract with an owner of such a mineral or working interest, or to a voluntary pooling agreement or a compulsory pooling order heretofore entered by the division. <u>Michelle Cooper</u> 5-6-13 Signature Date <u>Michelle Cooper</u> Printed Name <u>michelle.cooper@apachecorp.com</u> Email Address
32.489772 N 103.156239 W	SURFACE LOCATION Lat - N 32°29'23.61" Long - W 103°09'24.15" NMSPCE- N 543955.03 E 904134.68 (NAD-83) Lat - N 32°29'23.18" Long - W 103°09'22.46" NMSPCE- N 543895.04 E 862950.58 (NAD-27)		SURVEYOR CERTIFICATION I hereby certify that the well location shown on this plat was plotted from field notes of actual surveys made by me or under my supervision, and that the same is true and correct to the best of my belief.  Date Surveyed Signature of Professional Surveyor Certificate No. Gary L. Jones 7977 BASIN SURVEYS 28554
N 542593.26 E 903301.00 (NAD-83)		N 542667.81 E 908574.71 (NAD-83)	

MAY 20 2013

SECTION 10, TOWNSHIP 21 SOUTH, RANGE 37 EAST, N.M.P.M.,
LEA COUNTY, NEW MEXICO.



WELL IS LOCATED 4 MILES NORTH OF EUNICE, NEW MEXICO.



Directions to Location:

FROM STATE ROAD 207 AND NORTHEAST DRINKARD
UNIT ROAD GO EAST .4 MILES TURN NORTH TO
PROPOSED LOCATION.

APACHE CORPORATION

REF: NORTHEAST DRINKARD UNIT #562/ WELL PAD TOPO

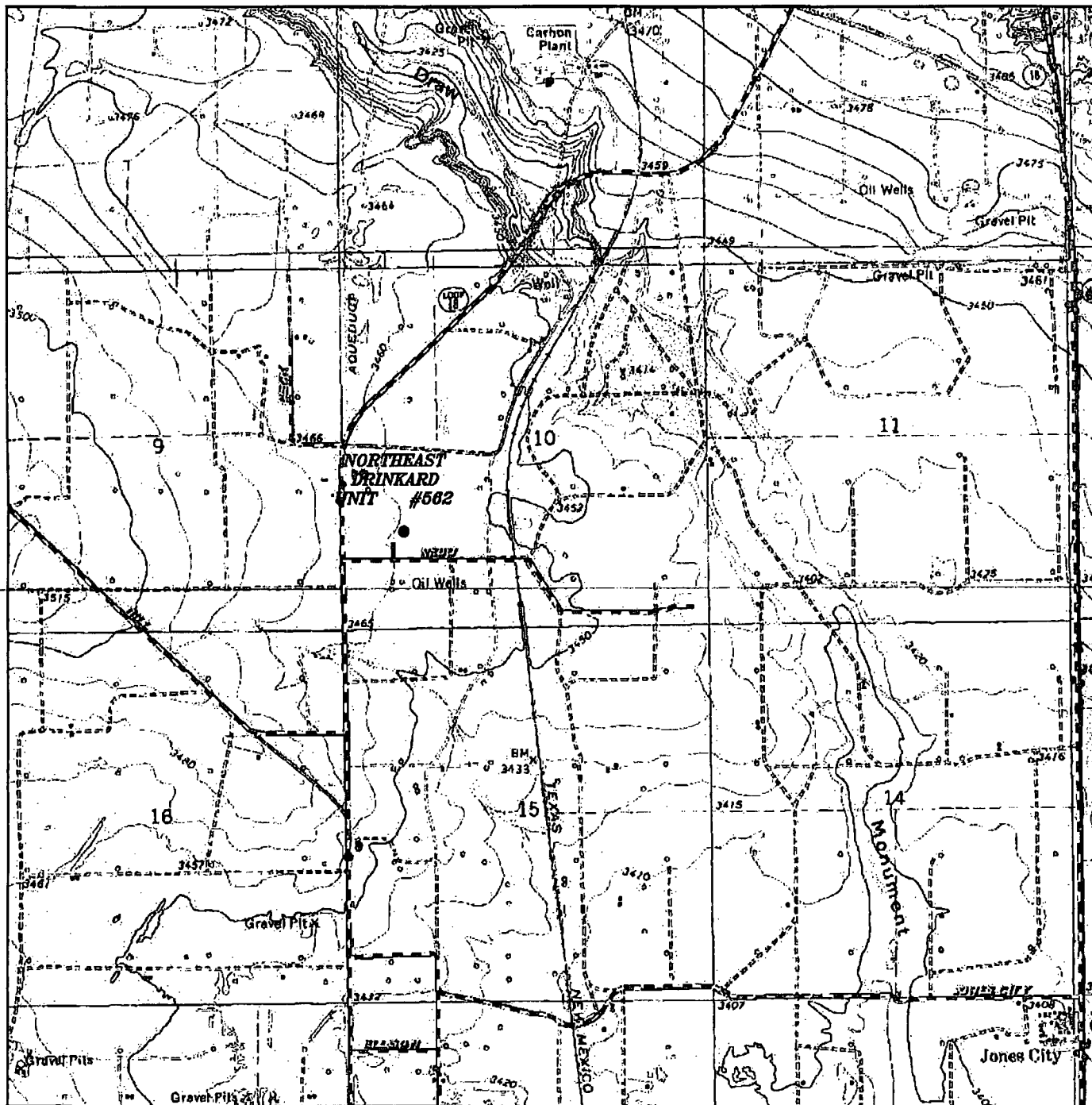
THE NORTHEAST DRINKARD UNIT #562 LOCATED 1350'
FROM THE SOUTH LINE AND 850' FROM THE WEST LINE OF
SECTION 10, TOWNSHIP 21 SOUTH, RANGE 37 EAST,
N.M.P.M., LEA COUNTY, NEW MEXICO.

BASIN SURVEYS P.O. BOX 1786-HOBBS, NEW MEXICO

W.O. Number: 28554 Drawn By: D. JONES

Date: 04-29-2013 Disk: DAJ 28554

Survey Date: 04-13-2013 Sheet 1 of 1 Sheets



NORTHEAST DRINKARD UNIT #562
 Located 1350' FSL and 850' FWL
 Section 10, Township 21 South, Range 37 East,
 N.M.P.M., LEA County, New Mexico.

basin
surveys
 focused on excellence
 in the oilfield

P.O. Box 1786
 1120 N. West County Rd.
 Hobbs, New Mexico 88241
 (575) 393-7316 - Office
 (575) 392-2206 - Fax
 basin-surveys.com

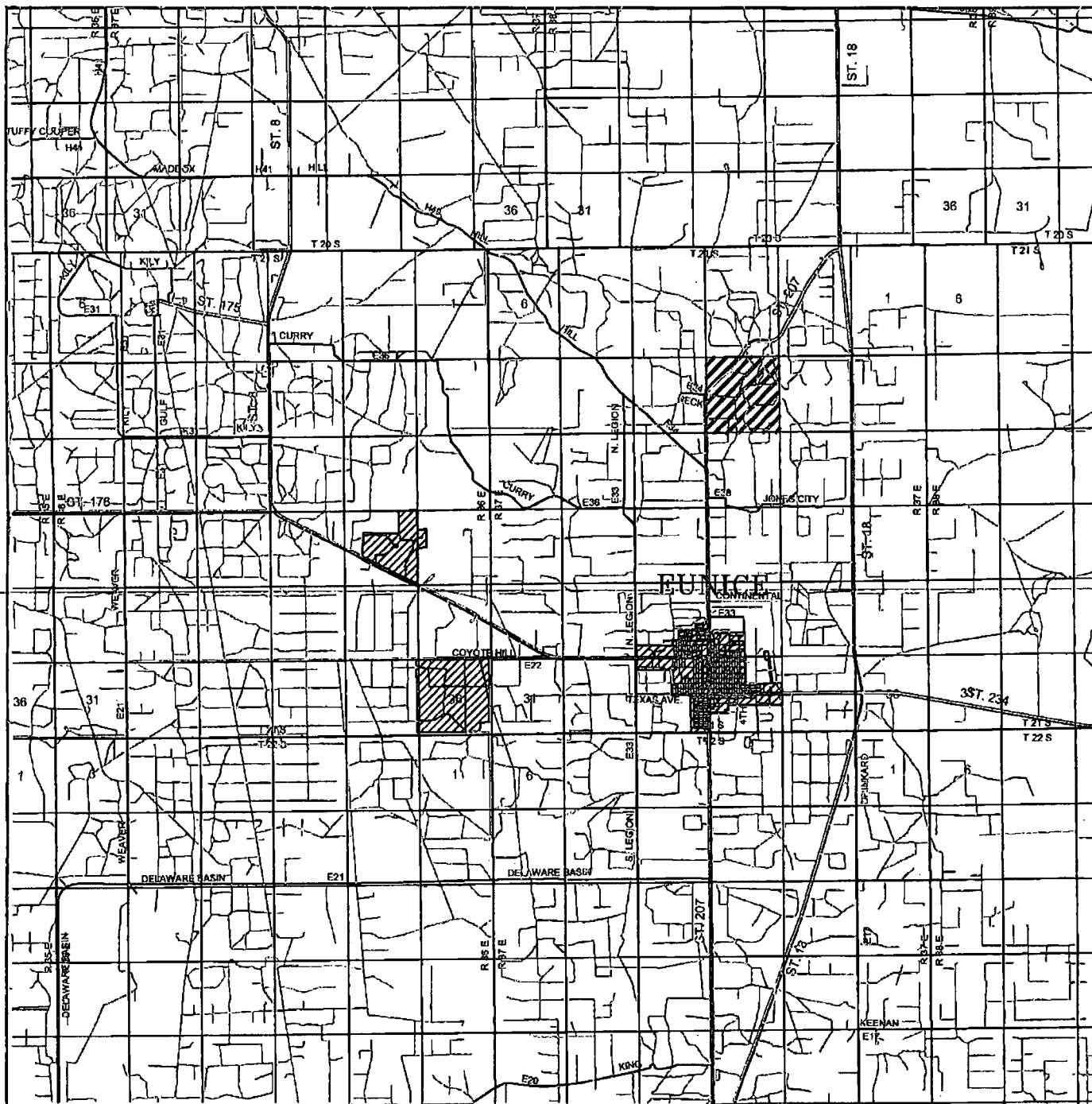
W.O. Number: DAJ 28554

Survey Date: 04-13-2013

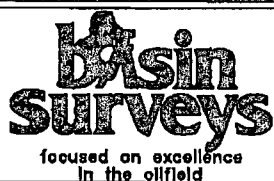
Scale: 1" = 2000'

Date: 04-28-2013

APACHE
CORPORATION



NORTHEAST DRINKARD UNIT #562
 Located 1350' FSL and 850' FWL
 Section 10, Township 21 South, Range 37 East,
 N.M.P.M., LEA County, New Mexico.



P.O. Box 1786
 1120 N. West County Rd.
 Hobbs, New Mexico 88241
 (575) 393-7316 - Office
 (575) 392-2208 - Fax
basinsurveys.com

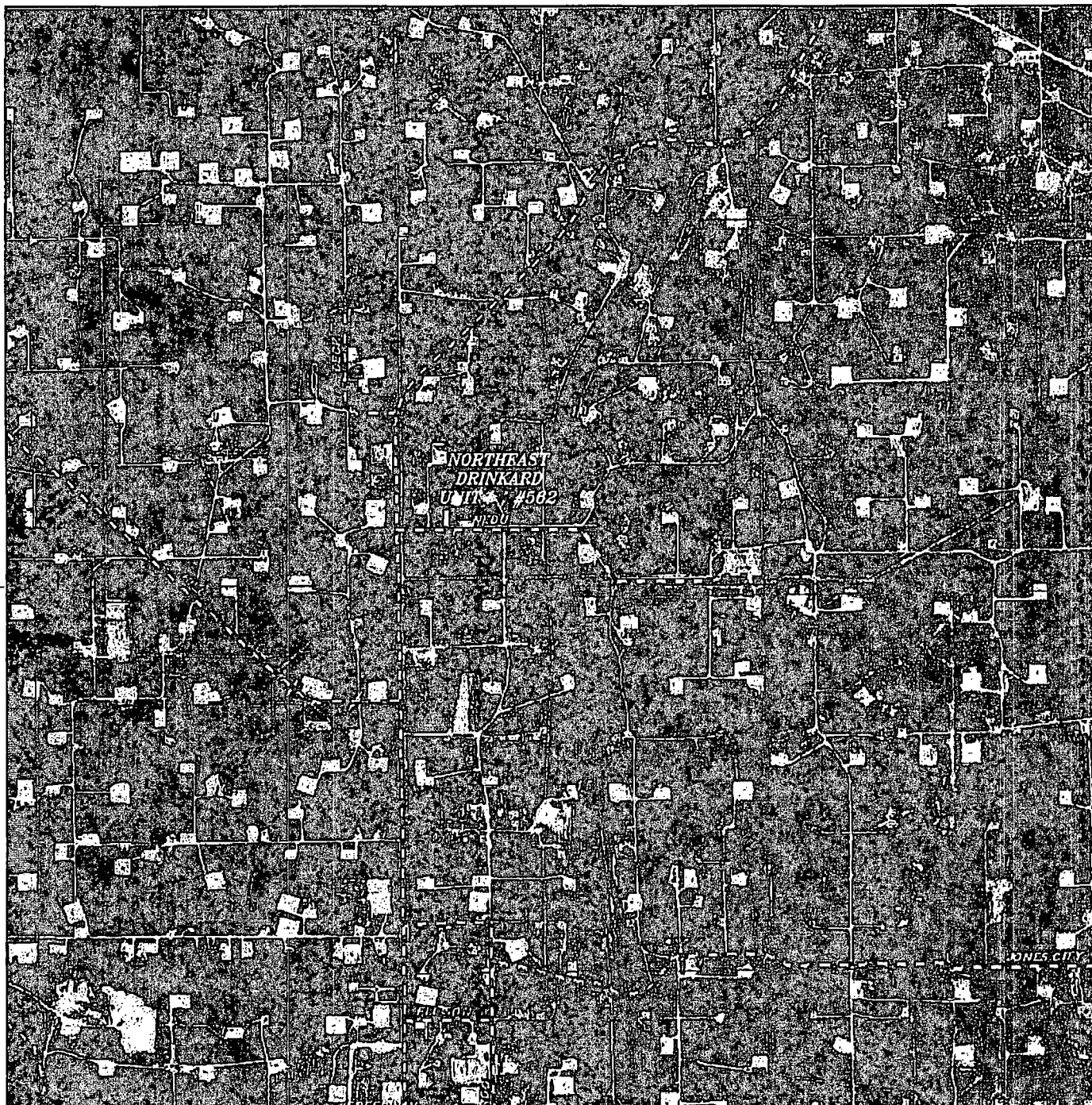
W.O. Number: DAJ 28554

Survey Date: 04-13-2013

Scale: 1" = 2 Miles

Date: 04-29-2013

**APACHE
 CORPORATION**



NORTHEAST DRINKARD UNIT #562
Located 1350' FSL and 850' FWL
Section 10, Township 21 South, Range 37 East,
N.M.P.M., LEA County, New Mexico.

basin
surveys
focused on excellence
in the oilfield

P.O. Box 1786
1120 N. West County Rd.
Hobbs, New Mexico 88241
(575) 393-7316 - Office
(575) 392-2206 - Fax
basinsurveys.com

W.O. Number: DAJ 28554

Scale: 1" = 2000'

YELLOW TINT - USA LAND
BLUE TINT - STATE LAND
NATURAL COLOR - FEE LAND

APACHE
CORPORATION