

DISTRICT I
1825 N. French Dr., Hobbs, NM 88240
Phone (505) 393-6161 Fax: (505) 393-0720

DISTRICT II
811 S. First St., Artesia, NM 88210
Phone (505) 748-1283 Fax: (505) 748-9720

DISTRICT III
1000 Rio Brazos Rd., Aztec, NM 87410
Phone (505) 334-6178 Fax: (505) 334-6170

DISTRICT IV
1220 S. St. Francis Dr., Santa Fe, NM 87505
Phone (505) 478-3460 Fax: (505) 478-3462

HOBBSD
State of New Mexico
Energy, Minerals and Natural Resources Department

MAY 08 2013
OIL CONSERVATION DIVISION
1220 South St. Francis Dr.
Santa Fe, New Mexico 87505

Form C-102
Revised August 1, 2011

Submit one copy to appropriate
District Office

RECEIVED
WELL LOCATION AND ACREAGE DEDICATION PLAT

☐ AMENDED REPORT

API Number 30-025-41168	Pool Code 22900	Pool Name Eunice, BLI-TU-DR, N
Property Code 22503	Property Name NORTHEAST DRINKARD UNIT	Well Number 565
GRID No. 873	Operator Name APACHE CORPORATION	Elevation 3429

Surface Location

UL or lot No. D	Section 14	Township 21 S	Range 37 E	Lot Idn	Feet from the 95	North/South line NORTH	Feet from the 960	East/West line WEST	County LEA
---------------------------	----------------------	-------------------------	----------------------	---------	----------------------------	----------------------------------	-----------------------------	-------------------------------	----------------------

Bottom Hole Location If Different From Surface

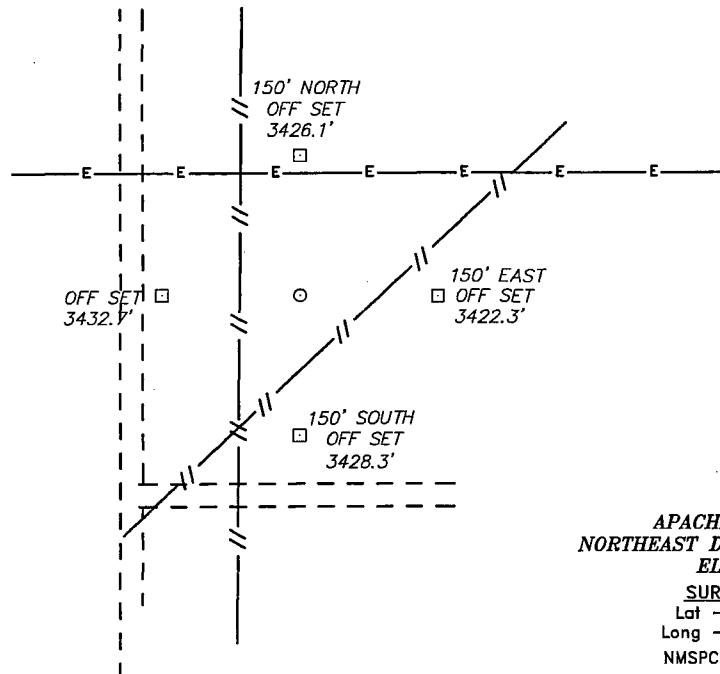
UL or lot No. M	Section 11	Township 21 S	Range 37 E	Lot Idn	Feet from the 10	North/South line SOUTH	Feet from the 650	East/West line WEST	County LEA
Dedicated Acres	Joint or Infill	Consolidation Code	Order No.						

NO ALLOWABLE WILL BE ASSIGNED TO THIS COMPLETION UNTIL ALL INTERESTS HAVE BEEN CONSOLIDATED
OR A NON-STANDARD UNIT HAS BEEN APPROVED BY THE DIVISION

<p>BOTTOM HOLE Lat - N 32°29'10.50" Long - W 103°08'24.90" NMSPC= N 542686.64 E 909224.47 (NAD-83) Lat: 32.486017 Long: 103.139783</p> <p>SURFACE LOCATION Lat - N 32°29'09.77" Long - W 103°08'23.22" NMSPC= N 542596.99 E 868040.36 (NAD-27) Lat: 32.485844 Long: 103.138775</p>	<p>N 547943.84 E 908510.39 (NAD-83)</p> <p>650' 0" 0"</p> <p>960' 0" 0"</p> <p>N 542667.81 E 908574.71 (NAD-83)</p> <p>N 542739.48 E 913850.89 (NAD-83)</p> <p>N 540029.30 E 908604.44 (NAD-83)</p>	<p>OPERATOR CERTIFICATION I hereby certify that the information contained herein is true and complete to the best of my knowledge and belief, and that this organization either owns a working interest or unleased mineral interest in the land including the proposed bottom hole location or has a right to drill this well at this location pursuant to a contract with an owner of such a mineral or working interest, or to a voluntary pooling agreement or a compulsory pooling order heretofore entered by the division.</p> <p>K Agee 5/2/13 Signature Date Kristina Agee Printed Name Kristina.agee@apachecorp.com Email Address</p> <p>SURVEYOR CERTIFICATION I hereby certify that the well location shown on this plat was plotted from field notes of actual surveys made by me or under my supervision, and that the same is true and correct to the best of my belief.</p> <p>Date Surveyed Signature & Seal of Professional Surveyor Certificate No. Gary L. Jones 7977 BASIN SURVEYS 28553</p>
--	---	--

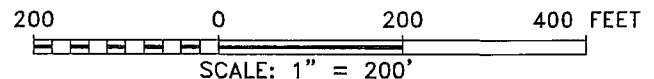
MAY 20 2013

SECTION 14, TOWNSHIP 21 SOUTH, RANGE 37 EAST, N.M.P.M.,
LEA COUNTY, NEW MEXICO.



APACHE CORPORATION
NORTHEAST DRINKARD UNIT #565
ELEV. ~ 3429
SURFACE LOCATION
Lat - N 32°29'09.47"
Long - W 103°08'21.29"
NMSPCE- N 542585.88
 E 909535.54
 (NAD-83)
Lat - N 32°29'09.04"
Long - W 103°08'19.59"
NMSPCE- N 542526.25
 E 868351.43
 (NAD-27)

WELL IS LOCATED 4 MILES NORTH OF EUNICE, NEW MEXICO.



Directions to Location:

FROM STATE ROAD 207 AND NORTHEAST DRINKARD
UNIT ROAD GO EAST 1.2 MILES TURN NORTH TO
PROPOSED LOCATION.

BASIN SURVEYS P.O. BOX 1786 - HOBBS, NEW MEXICO

W.O. Number: 28553 Drawn By: **D. JONES**

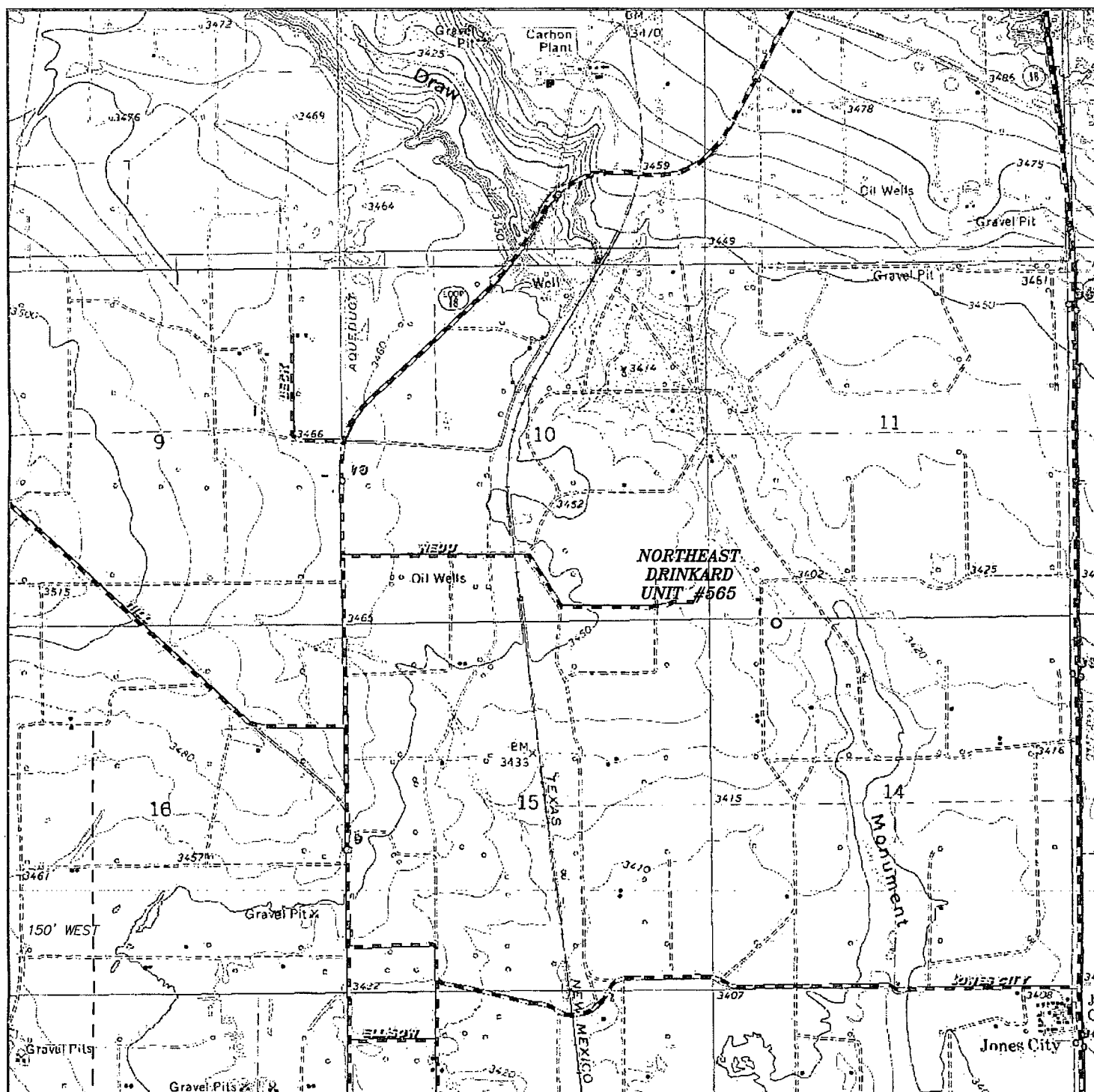
Date: 04-30-2013 Disk: DAJ 28553

APACHE CORPORATION

REF: NORTHEAST DRINKARD UNIT #565/ WELL PAD TOPO

THE NORTHEAST DRINKARD UNIT #565 LOCATED 95'
FROM THE NORTH LINE AND 960' FROM THE WEST LINE OF
SECTION 14, TOWNSHIP 21 SOUTH, RANGE 37 EAST,
N.M.P.M., LEA COUNTY, NEW MEXICO.

Survey Date: 04-13-2013 Sheet 1 of 1 Sheets



NORTHEAST DRINKARD UNIT #565

Located 95' FNL and 960' FWL

Section 14, Township 21 South, Range 37 East,
N.M.P.M., LEA County, New Mexico.



focused on excellence
in the oilfield

P.O. Box 1786
1120 N. West County Rd.
Hobbs, New Mexico 88241
(575) 393-7316 - Office
(575) 392-2206 - Fax
basinsurveys.com

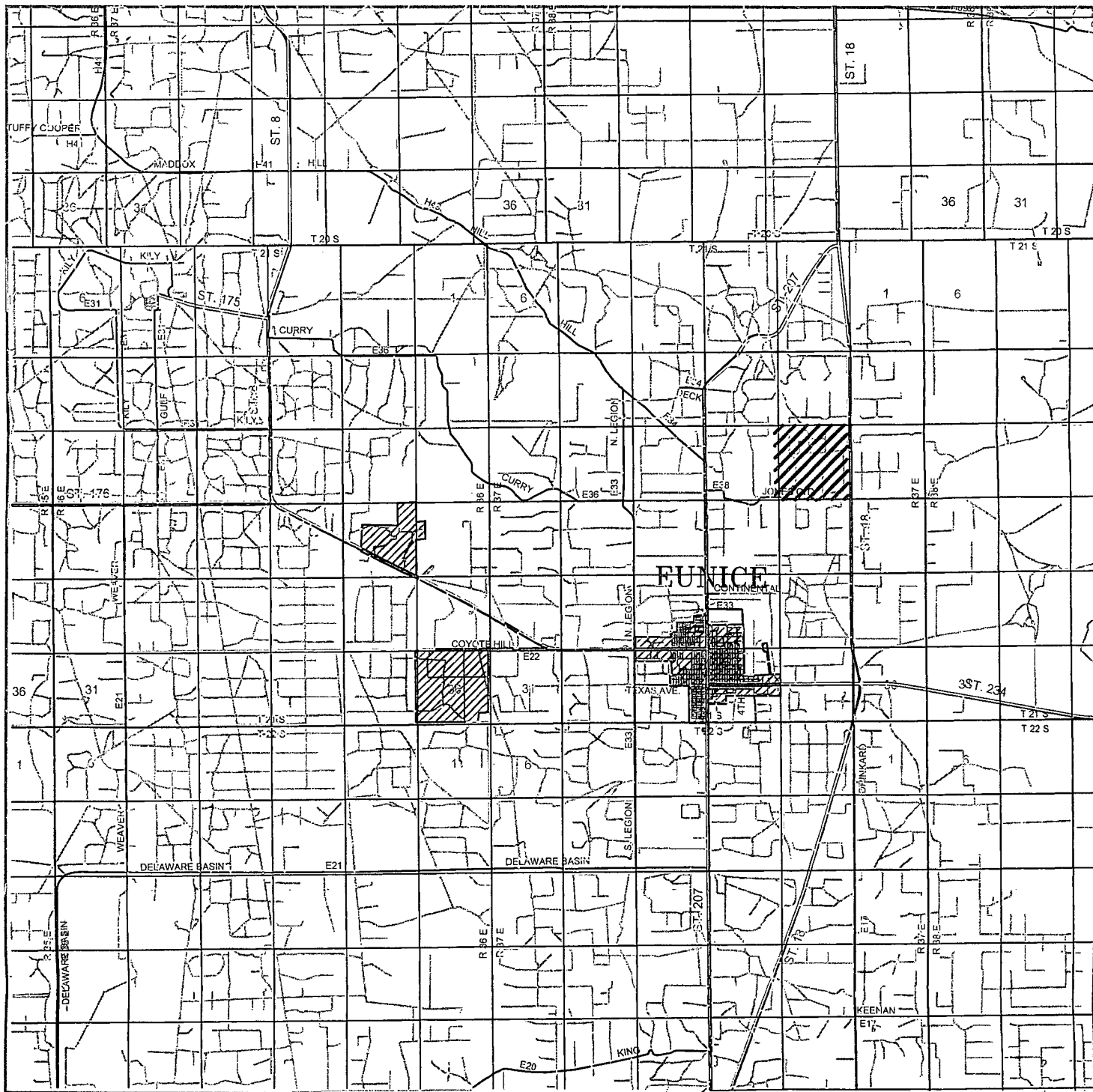
W.O. Number: DAJ 28553

Survey Date: 04-13-2013

Scale: 1" = 2000'

Date: 04-30-2013

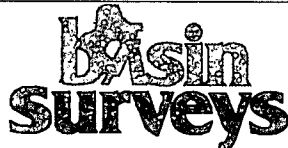
**APACHE
CORPORATION**



NORTHEAST DRINKARD UNIT #565

Located 95' FNL and 960' FWL

Section 14, Township 21 South, Range 37 East,
N.M.P.M., LEA County, New Mexico.



focused on excellence
in the oilfield

P.O. Box 1786
1120 N. West County Rd.
Hobbs, New Mexico 88241
(575) 393-7316 - Office
(575) 392-2206 - Fax
basinsurveys.com

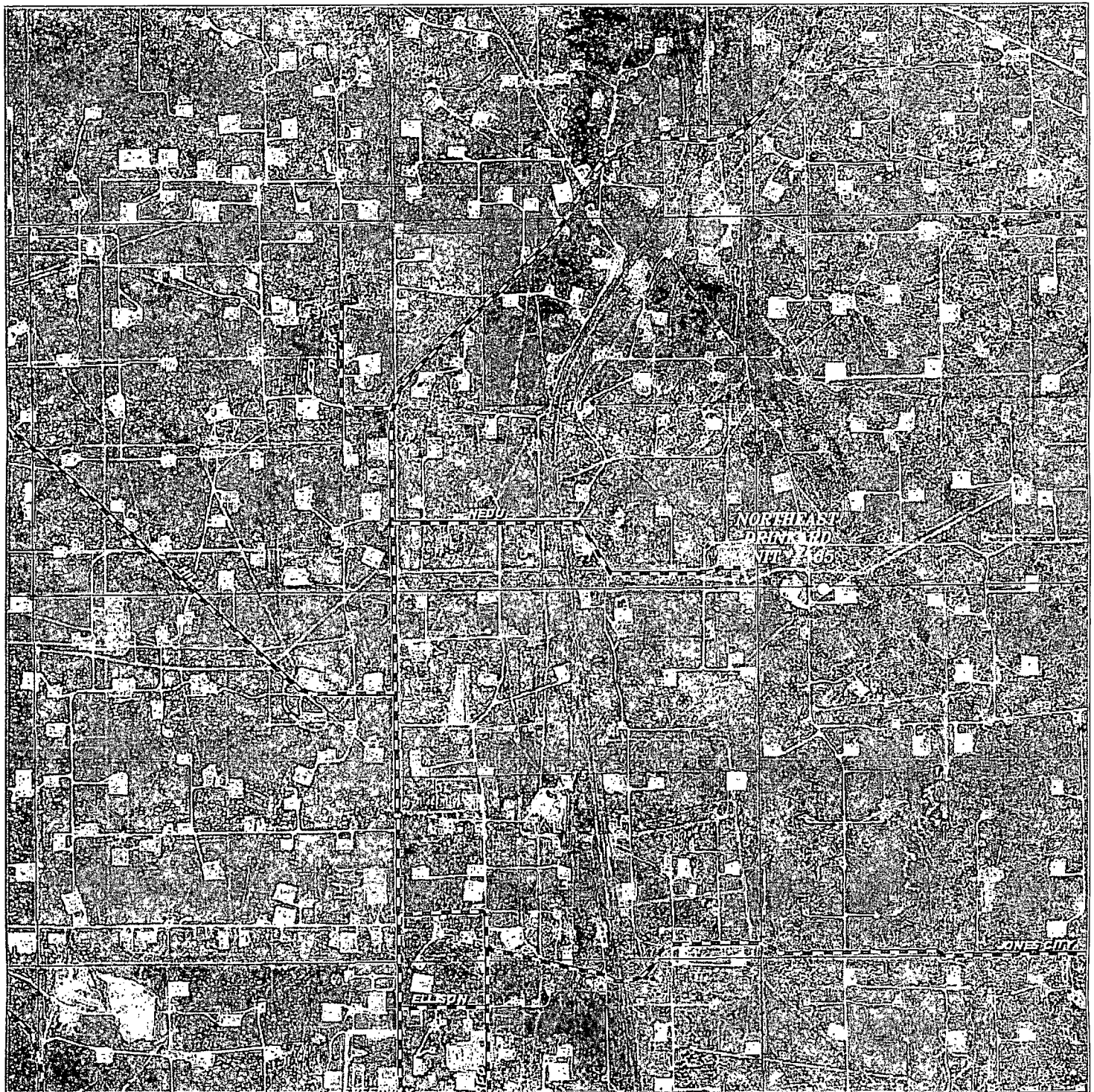
W.O. Number: DAJ 28553

Survey Date: 04-13-2013

Scale: 1" = 2 Miles

Date: 04-30-2013

**APACHE
CORPORATION**



NORTHEAST DRINKARD UNIT #565
 Located 95' FNL and 960' FWL
 Section 14, Township 21 South, Range 37 East,
 N.M.P.M., LEA County, New Mexico.

basin
surveys
 focused on excellence
 in the oilfield

P.O. Box 1786
 1120 N. West County Rd.
 Hobbs, New Mexico 88241
 (575) 393-7316 - Office
 (575) 392-2206 - Fax
 basinsurveys.com

W.O. Number: DAJ 28553

Scale: 1" = 2000'

YELLOW TINT - USA LAND
 BLUE TINT - STATE LAND
 NATURAL COLOR - FEE LAND

APACHE
CORPORATION