

Office

Energy, Minerals and Natural Resources

May 27, 2004

District I

1625 N. French Dr., Hobbs, NM 88240

District II

1301 W. Grand Ave., Artesia, NM 88210

District III

1000 Rio Brazos Rd., Aztec, NM 87410

District IV

1220 S. St. Francis Dr., Santa Fe, NM

87505

HOBBS OCD

OIL CONSERVATION DIVISION

1220 South St. Francis Dr.

Santa Fe, NM 87505

MAY 09 2013

RECEIVED

WELL API NO.

30-025-02875

5. Indicate Type of Lease

STATE ☒ FEE ☐

6. State Oil & Gas Lease No.

B-2360

7. Lease Name or Unit Agreement Name

East Vacuum GB-SA Unit Tr 2658

8. Well number

011

9. OGRID Number

217817

10. Pool name or Wildcat

Vacuum; Grayburg-San Andres

SUNDRY NOTICES AND REPORTS ON WELLS

(DO NOT USE THIS FORM FOR PROPOSALS TO DRILL OR TO DEEPEN OR PLUG BACK TO A DIFFERENT RESERVOIR. USE "APPLICATION FOR PERMIT" (FORM C-101) FOR SUCH PROPOSALS.)

1. Type of Well: Oil Well ☒ Gas Well ☐ Other ☐

2. Name of Operator

ConocoPhillips Company

3. Address of Operator

4001 Penbrook Street Odessa, TX 79762

4. Well Location

Unit Letter K : 1980 feet from the South line and 1980 feet from the West lineSection 26 Township 17-S Range 35-E NMPM Lea County

11. Elevation (Show whether DR, RKB, RT, GR, etc.)

3924' RKB

Pit or Below-grade Tank Application ☒ or Closure ☐Pit type STEEL Depth to Groundwater Distance from nearest fresh water well Distance from nearest surface water N/APit Liner Thickness: STEEL mil Below-Grade Tank: Volume bbls; Construction Material STEEL

12. Check Appropriate Box to Indicate Nature of Notice, Report or Other Data

NOTICE OF INTENTION TO:

PERFORM REMEDIAL WORK ☐ PLUG AND ABANDON ☒TEMPORARILY ABANDON ☐ CHANGE PLANS ☐PULL OR ALTER CASING ☐ MULTIPLE COMPL ☐OTHER: ☐

SUBSEQUENT REPORT OF:

REMEDIAL WORK ☐ ALTERING CASING ☐COMMENCE DRILLING OPNS. ☐ P AND A ☐CASING/CEMENT JOB ☐OTHER: ☐

13. Describe proposed or completed operations. (Clearly state all pertinent details, and give pertinent dates, including estimated date of starting any proposed work). SEE RULE 1103. For Multiple Completions: Attach wellbore diagram of proposed completion or recompletion.

1) MIRU. NDWH, NU BOP. POOH w/ RBP @ 1,985' - If not, must drill out

2) RIH Tbg = Tag RBP @ 4,000'. Circ hole w/ MLF. Spot 80sx cmt @ 4,000' - 3,600' - Tag

3) PUH to 3,300' - Spot 25sx cmt to 3,200'

4) PUH to 2,805' - Spot 30sx cmt to 2,705' - WOC-Tag

5) PUH to 2,156' - Spot 35sx cmt to 2,000' - WOC-Tag

6) PUH to 1,750' - Spot 30sx cmt to 1,600' - WOC-Tag

7) PUH to 300' - Pump 60sx cmt to surface. Fill wellbore. RDMO

ALSO RBP @ 4000'.

SET 4 1/2 CIRBP @ 4400'
CIRC MLF. SPOT CMT 4400' - 4000'.
WOC & TAG. (COVERS CIRBP
7" SHOE
TDP OF LINER.)The Oil Conservation Division Must be notified
24 hours prior to the beginning of plugging operations.I hereby certify that the information above is true and complete to the best of my knowledge and belief. I further certify that any pit or below-grade tank has been/will be constructed or closed according to NMOCD guidelines ☒ a general permit ☐ or an (attached) alternative OCD-approved plan ☐.

SIGNATURE

TITLE P&A TechDATE 5/8/2013Type or print name Greg Bryant

For State Use Only

APPROVED BY: Mary G BrownTITLE Compliance OfficerDATE 5/10/2013

Conditions of Approval (if any):

MAY 20 2013

OM

WELLBORE SKETCH
ConocoPhillips Company -- Lower 48 - Mid-Continent BU / Permian Operations

Date: Apr. 4, 2013

RKB @ 3924'
 DF @ 3923'
 GL @ 3914'

Subarea: Buckeye
 Lease & Well No.: East Vacuum GB/SA Unit, Tract 2658 Well No. 011
 Legal Description: 1980' FSL & 1980' FWL, Sec. 26, T1S, R35E, UL "K"
 County: Lea State: New Mexico
 Field: Vacuum (Grayburg-San Andres)
 Date Spudded: 9/9/38 Rig Released: 10/16/38
 API Number: 30-025-02875
 Status: _____
 Drilled as Santa Fe # 11 State Lease: B-2360
 Lease Type: State
 OGRID Number 217817

Stimulation History:

Interval	Date	Type	Gals	Lbs. Sand	Max Press	ISIP	Max Rate	Max Down
OH 4207-4611	3/10/70	28% Acid	1,000		0		2.0	Tbg
	7/31/71	Plug back from 4611' to 4532' w/ 300# Calseal & 500# Hydromite						
	3/8/72	Plug back from 4532' to 4504' w/ Hydromite						
	3/29/74	Run 4-1/2" Liner @ 4526'. Top @ 4070' w/ 160 sx cmt						
4488-4492	3/30/74	Perf w/ 2 SPF @ 4488-4492						
		15% HCl	500		2500	1300	0.25	Tbg
	9/12/83	Shut-in						
	1/30/92	Drill out hydromite from 4504' to 4610' w/ 3-7/8" bit						
4449-4610	2/5/92	Perf w/ 2 SPF @ 4449-4455; 4499-4509 and 4516-4526						
	2/6/92	15% NEFE HCl	6,000	3750# RS	2200	1300	6.06	
	2/11/92	Locate leak between 2190' and 2221' in 7" csg						
	2/12/92	Sqz w/ 60 sx Micro Matrix cmt @ 2019-2144						
4449-4610	2/17/92	Csg leaks between 2793' and 3422'						
	2/6/98	15% Ferchek	3,000	1500# RS				
				1500# MS	3000		4.3	
	10/31/00	Csg leaks @ 2801' to 3242'						
	10/31/00	Ret @ 2729'. Sqz w/ 850 sx @ 2729'-3242'						
	11/6/01	Sqz @ 2801-3242 w/ 500 sx "C"						
	2/17/09	Tag obstruction @ 2963'						
	2/19/09	Drill tight spot; tag obstruction @ top of liner @ 4070'						
		Drill out to 4600'; solid						
	4/5/10	Shoot drain holes @ 2825'						
	5/12/10	Isolate csg leak @ 2055-2066; sqz w/ 400 sx Cl C @ 2150-Surf						
	1/4/12	Set 7" RBP @ 4000'; tested to 500# held						
	1/5/12	Stack out @ 3106'						
	1/12/12	Run Radial Bond Log						
		Mechanically impaired casing from 2000'-3250'						
	1/16/12	Run 7" RBP @ 1985'						

12" Hole

9-5/8" 36# @ 1696'

Cmt'd w/ 860 sx; circ
 TOC @ Surface

7" RBP @ 1985'

Csg leak @ 2055-2066
 Sqz 400 sx @ 2150'-Surf
 Csg lk @ 2190-2221
 Sqz w/ 60 sx Micro Matrix cmt @ 2019-2144

Top of Salt @ +/- 2106'

Base Salt @ +/- 2755'

Csg leaks @ 2801' to 3242'
 Sqz @ 2729-3242 w/ 850 sx Cl C
 Sqz @ 2801-3242 w/ 500 sx "C"

TOC 7" Csg @ 3430' (CBL)

7" RBP @ 4000'
 Top of Liner @ 4070'
 8-3/4" Hole
 7" 24# @ 4207'
 Cmt'd w/ 400 sx
 TOC @ 3430' (CBL)

4488-4492
 6-1/4" Hole
 4-1/2" LINER @ 4526'-4070'
 Cmt'd w/ 160 sx; TOC @ 4070'

OPENHOLE 4526-4611

Formation Tops:

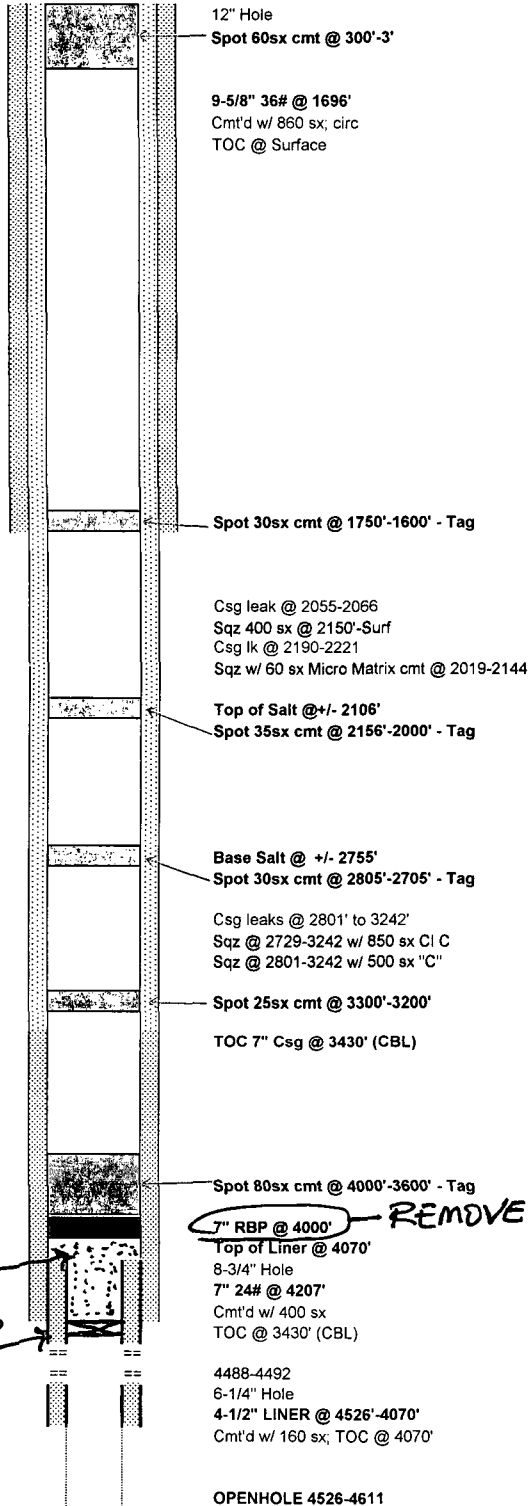
Rustler
 Salado
 Yates
 Queen
 Grayburg
 San Andres

PBTD: 4610'
 TD: 4611'

WELLSKETCH
ConocoPhillips Company -- Lower 48 - Mid-Continent BU / Permian Operations

Date: Apr. 4, 2013

RKB @ 3924'
 DF @ 3923'
 GL @ 3914'



Subarea : Buckeye
 Lease & Well No. : East Vacuum GB/SA Unit, Tract 2658 Well No. 011
 Legal Description : 1980' FSL & 1980' FWL, Sec. 26, T1S, R35E, UL "K"
 County : Lea State : New Mexico
 Field : Vacuum (Grayburg-San Andres)
 Date Spudded : 9/9/38 Rig Released: 10/16/38
 API Number : 30-025-02875
 Status: _____

Drilled as Santa Fe # 11
 State Lease: **B-2360**
 Lease Type: **State**
 OGRID Number **217817**

Stimulation History:

Interval	Date	Type	Gals	Lbs. Sand	Max Press	ISIP	Max Rate	Down
OH 4207-4611	3/10/70	28% Acid	1,000		0		2.0	Tbg
	7/31/71	Plug back from 4611' to 4532' w/ 300# Calseal & 500# Hydromite						
	3/8/72	Plug back from 4532' to 4504' w/ Hydromite						
	3/29/74	Run 4-1/2" Liner @ 4526'. Top @ 4070' w/ 160 sx cmt						
	3/30/74	Perf w/ 2 SPF @ 4488-4492						
4488-4492	9/12/83	15% HCl	500		2500	1300	0.25	Tbg
		Shut-in						
	1/30/92	Drill out hydromite from 4504' to 4610' w/ 3-7/8" bit						
	2/5/92	Perf w/ 2 SPF @ 4449-4455; 4499-4509 and 4516-4526						
4449-4610	2/6/92	15% NEFE HCl	6,000	3750# RS	2200	1300	6.06	
	2/11/92	Locate leak between 2190' and 2221' in 7" csg						
	2/12/92	Sqz w/ 60 sx Micro Matrix cmt @ 2019-2144						
	2/17/92	Csg leaks between 2793' and 3422'						
4449-4610	2/6/98	15% Ferchek	3,000	1500# RS				
				1500# MS	3000		4.3	
	10/31/00	Csg leaks @ 2801' to 3242'						
	10/31/00	Ret @ 2729'. Sqz w/ 850 sx @ 2729'-3242'						
	11/6/01	Sqz @ 2801-3242 w/ 500 sx "C"						
	2/17/09	Tag obstruction @ 2963'						
	2/19/09	Drill tight spot; tag obstruction @ top of liner @ 4070'						
		Drill out to 4600'; solid						
	4/5/10	Shoot drain holes @ 2825'						
	5/12/10	Isolate csg leak @ 2055-2066; sqz w/ 400 sx Cl C @ 2150-Surf						
	1/4/12	Set 7" RBP @ 4000'; tested to 500# held						
	1/5/12	Stack out @ 3106'						
	1/12/12	Run Radial Bond Log						
		Mechanically impaired casing from 2000'-3250'						
	1/16/12	Run 7" RBP @ 1985'						

Formation Tops:

Rustler
 Salado
 Yates
 Queen
 Grayburg
 San Andres

PBTD: 4610'
 TD: 4611'

OPENHOLE 4526-4611