

District I
1625 N. French Dr., Hobbs, NM 88240
District II
1301 W. Grand Avenue, Artesia, NM 88210
District III
1000 Rio Brazos Rd., Aztec, NM 87410
District IV
1220 S. St. Francis Dr., Santa Fe, NM 87505

State of New Mexico
Energy, Minerals & Natural Resources Department
OIL CONSERVATION DIVISION
1220 South St. Francis Dr.
Santa Fe, NM 87505

Form C-102
Revised October 12, 2005
Submit to Appropriate District Office
State Lease- 4 Copies
Fee Lease- 3 Copies

AMENDED REPORT
As Drilled

WELL LOCATION AND ACREAGE DEDICATION PLAT

| | | |
|----------------------------|---|---|
| API Number 30-025-40306 | Pool Code 6925 | Pool Name Bootleg Ridge Delaware, NW |
| Property Code 39664 | Property Name BOOTLEG GIN FEDERAL COM Speak Easy Unit | Well Number 2H #H |
| OGRID No. 16696 | Operator Name OXY USA INC. | Elevation 3643.5' |

Surface Location

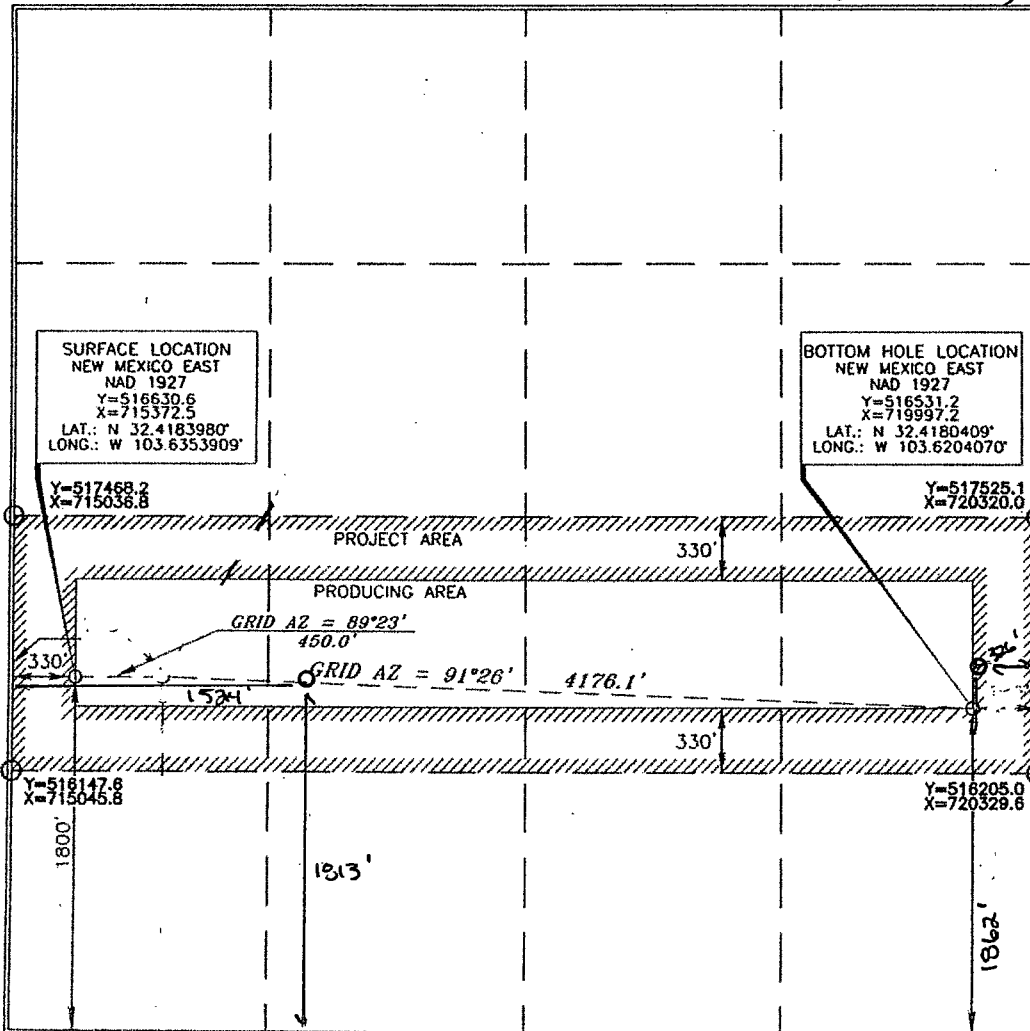
| UL or lot no. | Section | Township | Range | Lot Idn | Feet from the | North/South line | Feet from the | East/West line | County |
|---------------|---------|----------|-------------------|---------|---------------|------------------|---------------|----------------|--------|
| L | 1 | 22 SOUTH | 32 EAST, N.M.P.M. | | 1800' | SOUTH | 330' | WEST | LEA |

Bottom Hole Location If Different From Surface

| UL or lot no. | Section | Township | Range | Lot Idn | Feet from the | North/South line | Feet from the | East/West line | County |
|-------------------------|---------|----------------------|--------------------|-----------|----------------|------------------|---------------|----------------|--------|
| I | 1 | 22 SOUTH | 32 EAST, N.M.P.M. | | 1650' 1800' | SOUTH | 330' 330' | EAST W | LEA |
| Dedicated Acres 1.60 | | Joint or Infill N | Consolidation Code | Order No. | | | | | |

No allowable will be assigned to this completion until all interests have been consolidated or a non-standard unit has been approved by the division.

PBD - 1859 FSL 417 FEL (I)
T.Pent - 1813 FSL 1524 FEL (K)



OPERATOR CERTIFICATION

I hereby certify that the information contained herein is true and complete to the best of my knowledge and belief, and that this organization either owns a working interest or unleased mineral interest in the land including the proposed bottom hole location or has a right to drill this well at this location pursuant to a contract with an owner of such a mineral or working interest, or to a voluntary pooling agreement or a compulsory pooling order heretofore entered by the division.

David Stewart 5/6/13
Signature Date

David Stewart Sr. Res. Adv.
Printed Name
david.stewart@oxy.com

SURVEYOR CERTIFICATION

I hereby certify that the well location shown on this plat was plotted from field notes of actual surveys made by me or under my supervision, and that the same is true and correct to the best of my belief.

15079
MARCH 25, 2011
Date of Survey

Jerry G. Paul 3/28/2011
Signature and Seal of Professional Surveyor
Certificate Number 15079

WO# 110120WL-XY (Rev. A) (XA)

MAY 23 2013