

District I  
1625 N. French Dr., Hobbs, NM 88240  
District II  
1301 W. Grand Avenue, Artesia, NM 88210  
District III  
1000 Rio Brazos Rd., Aztec, NM 87410  
District IV  
1220 S. St. Francis Dr., Santa Fe, NM 87505

State of New Mexico  
**HOBBS OCD** Energy, Minerals & Natural Resources  
**MAY 03 2013** OIL CONSERVATION DIVISION  
1220 South St. Francis Dr.  
Santa Fe, NM 87505

Form C-102  
Revised October 12, 2005

Submit to Appropriate District Office  
State Lease - 4 Copies  
Fee Lease - 3 Copies

☐ AMENDED REPORT

RECEIVED

WELL LOCATION AND ACREAGE DEDICATION PLAT

|  |  |  |  |
|--|--|--|--|
| <sup>1</sup> API Number<br><b>30-025-40590</b> |  | <sup>2</sup> Pool Code<br><b>96674</b> | <sup>3</sup> Pool Name<br><b>Triple X; Bone Spring, West</b> |
| <sup>4</sup> Property Code<br><b>39241</b>     | <sup>5</sup> Property Name<br><b>Mis Amigos</b>      |  | <sup>6</sup> Well Number<br><b>1</b>                         |
| <sup>7</sup> OGRID No.<br><b>005380</b>        | <sup>8</sup> Operator Name<br><b>XTO Energy, Inc</b> |  | <sup>9</sup> Elevation<br><b>3864</b>                        |

<sup>10</sup> Surface Location

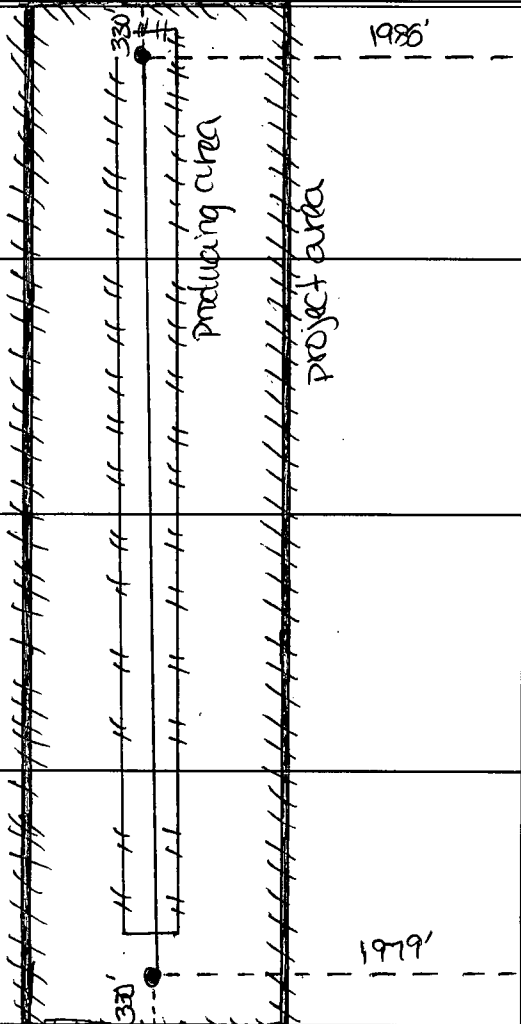
|                           |                      |                        |                     |          |                             |                                  |                              |                               |                      |
|---------------------------|----------------------|------------------------|---------------------|----------|-----------------------------|----------------------------------|------------------------------|-------------------------------|----------------------|
| UL or lot no.<br><b>O</b> | Section<br><b>31</b> | Township<br><b>23S</b> | Range<br><b>33E</b> | Lot. Idn | Feet from the<br><b>330</b> | North/South line<br><b>South</b> | Feet from the<br><b>1979</b> | East/West line<br><b>East</b> | County<br><b>Lea</b> |
|---------------------------|----------------------|------------------------|---------------------|----------|-----------------------------|----------------------------------|------------------------------|-------------------------------|----------------------|

<sup>11</sup> Bottom Hole Location If Different From Surface

|                           |                      |                        |                     |          |  |  |   |                               |                      |
|---------------------------|----------------------|------------------------|---------------------|----------|--|--|---|-------------------------------|----------------------|
| UL or lot no.<br><b>B</b> | Section<br><b>31</b> | Township<br><b>23S</b> | Range<br><b>33E</b> | Lot. Idn | Feet from the<br><b>4952</b><br><b>330</b> | North/South line<br><b>S</b><br><b>North</b> | Feet from the<br><b>2016</b><br><b>1985</b> | East/West line<br><b>East</b> | County<br><b>Lea</b> |
|---------------------------|----------------------|------------------------|---------------------|----------|--|--|---|-------------------------------|----------------------|

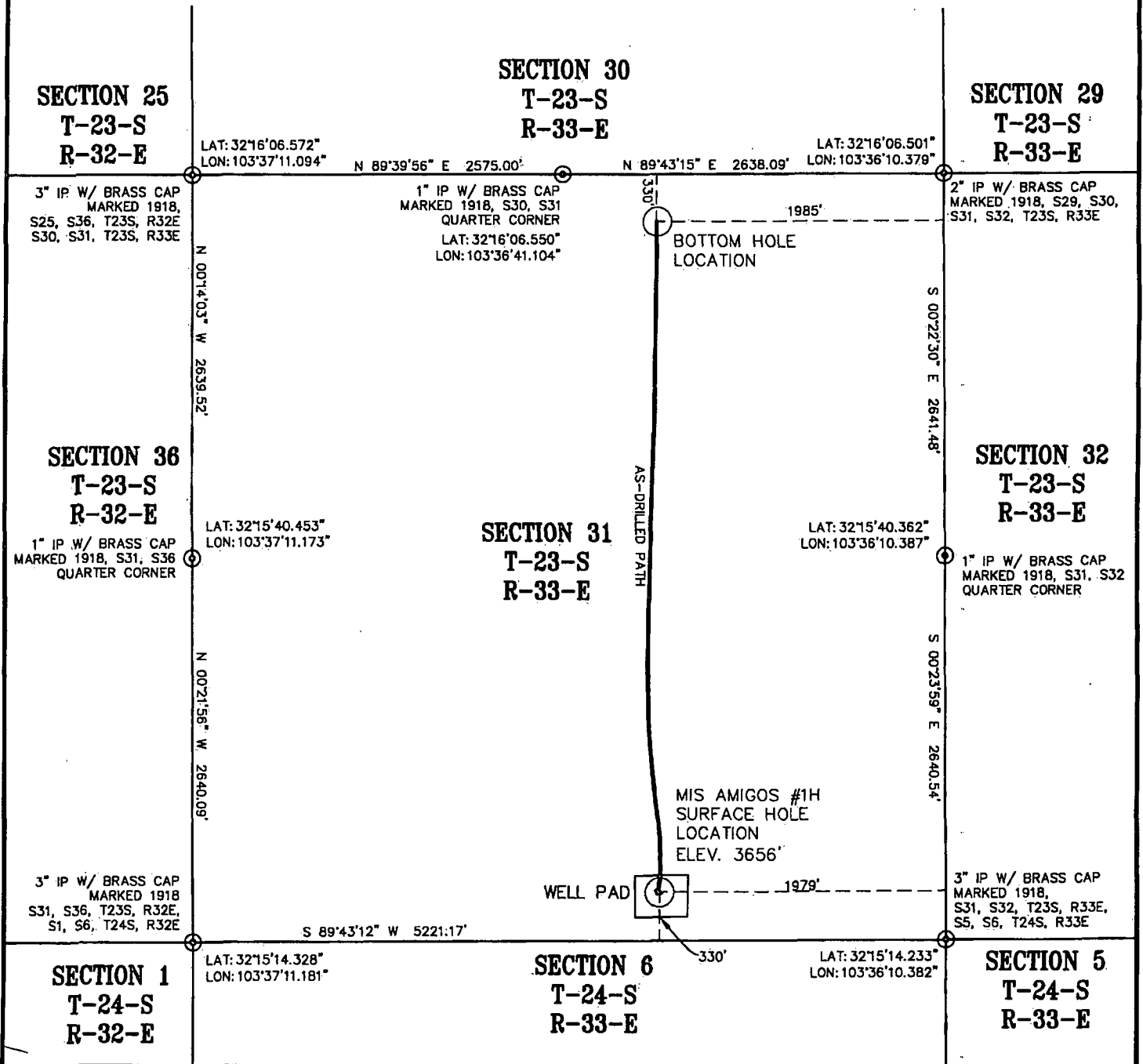
|   |                               |                                  |                         |
|---|-------------------------------|----------------------------------|-------------------------|
| <sup>12</sup> Dedicated Acres<br><b>160</b> | <sup>13</sup> Joint or Infill | <sup>14</sup> Consolidation Code | <sup>15</sup> Order No. |
|---|-------------------------------|----------------------------------|-------------------------|

NO ALLOWABLE WILL BE ASSIGNED TO THIS COMPLETION UNTIL ALL INTERESTS HAVE BEEN CONSOLIDATED OR A NON-STANDARD UNIT HAS BEEN APPROVED BY THE DIVISION

|  |   |
|--|---|
| <sup>16</sup><br> | <sup>17</sup> OPERATOR CERTIFICATION<br>I hereby certify that the information contained herein is true and complete to the best of my knowledge and belief, and that this organization either owns a working interest or unleased mineral interest in the land including the proposed bottom hole location or has a right to drill this well at this location pursuant to a contract with an owner of such a mineral or working interest, or to a voluntary pooling agreement or a compulsory pooling order heretofore entered by the division.<br><br><u>Stephanie Rabadue</u> 1/19/2013<br>Signature Date<br><br>Stephanie Rabadue<br>Printed Name<br>stephanie_rabadue@xtoenergy.com |
|  | <sup>18</sup> SURVEYOR CERTIFICATION<br>I hereby certify that the well location shown on this plat was plotted from field notes of actual surveys made by me or under my supervision, and that the same is true and correct to the best of my belief.<br><br>10/12/2012<br>Date of Survey<br>Signature and Seal of Professional Surveyer:   |
|  | Certificate Number  |

MAY 23 2013

LEA COUNTY, NEW MEXICO  
SECTION 31, TOWNSHIP 23 SOUTH, RANGE 33 EAST  
NEW MEXICO PRINCIPAL MERIDIAN



APPROXIMATELY 26.2 MILES NORTHWEST OF JAL, NEW MEXICO

**SURFACE LOCATION:**

NAD 83, NEW MEXICO EAST ZONE COORD'S  
OF THE MIS AMIGOS #1H: N(Y)= 457210.3', E(X)= 765163.1'.  
NAD 27, NEW MEXICO EAST ZONE COORD'S  
OF THE MIS AMIGOS #1H: N(Y)= 457151.2', E(X)= 723979.3'.  
WGS84, LATITUDE & LONGITUDE OF THE MIS AMIGOS #1H:  
LAT= N 32°15'17.538", W 103°36'33.429".

**BOTTOM HOLE LOCATION:**

NAD 83, NEW MEXICO EAST ZONE COORD'S  
OF THE MIS AMIGOS #1H: N(Y)= 461832.0', E(X)= 765125.7'.  
NAD 27, NEW MEXICO EAST ZONE COORD'S  
OF THE MIS AMIGOS #1H: N(Y)= 461772.8', E(X)= 723942.1'.  
WGS84, LATITUDE & LONGITUDE OF THE MIS AMIGOS #1H:  
LAT= N 32°16'03.273", W 103°36'33.501".

BOTTOM HOLE LOCATION AND  
AS-DRILLED PATH SHOWN  
HEREON FOR THE #1H WAS  
PROVIDED BY XTO ENERGY.

**LEGEND:**

○ WELL

● IRON PIPE FOUND (IP)

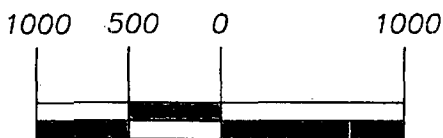


I hereby certify that the foregoing description and plat attached  
hereon is a representation of a survey completed on the ground  
under my supervision and is true and correct to the best of my  
knowledge and belief.

10/12/12  
DATE

W.D. WATSON, JR.

NEW MEXICO P.L.S. No. 3959



SCALE 1" = 1000'  
GRID

**John F. Watson & Company**

LAND & DEVELOPMENT SERVICES  
PROFESSIONAL LAND SURVEYORS

200 N. Lorraine, Suite 220  
Midland, Texas 79701  
jwatson@windearthwater.com

off. (432) 520-2400  
fax. (432) 520-2404  
mob. (432) 528-0074

Your Partner for Responsible Development

**Watson**  
Professional  
Group Inc



P.O. DRAWER 11186  
MIDLAND, TEXAS  
79702  
(432) 520-9200  
FAX (432)  
520-9212  
wdwatson@wpg-usa.com

CONSULTING ENGINEERS, LAND SURVEYORS & PLANNERS

XTO ENERGY, INC.  
MIS AMIGOS #1H  
330' FSL & 1979' FEL  
SECTION 31  
T-23-S,  
R-33-E,  
LEA COUNTY,  
NEW MEXICO

REV: 10/12/12  
JOB No: 12-0107  
FIELD BOOK: JC 118/14  
DRAWN BY: RLW/KP  
CHK BY: JFW/KP  
FILE: S:\2012\T-23-S  
R-33-E, LEA CO, NEW  
MEXICO  
PAGE 1 OF 1