

District I
1625 N. French Dr., Hobbs, NM 88240

District II
811 S. 1st Street, Artesia, NM 88210

District III
1000 Rio Brazos Road, Aztec, NM 87410

District IV
1220 S. St. Francis Dr., Santa Fe, NM 87505

State of New Mexico
Energy Minerals and Natural Resources

Form C-101
June 16, 2008

Oil Conservation Division
1220 South St. Francis Dr.
Santa Fe, NM 87505

Submit to appropriate District Office

☐ AMENDED REPORT

HOBBS OCD

MAY 20 2013

APPLICATION FOR PERMIT TO DRILL, RE-ENTER, DEEPEN, PLUGBACK, OR ADD A ZONE

¹ Operator Name and Address APACHE CORPORATION 303 VETERANS AIRPARK LN, STE. 3000 MIDLAND, TX 79705		² OGRID Number 873
⁴ Property Code 302708	³ Property Name NORTH MONUMENT G/SA UNIT	⁵ API Number 30-025-38312
⁹ Proposed Pool 1 EUNICE MONUMENT; GRAYBURG - SAN ANDRES		¹⁰ Proposed Pool 2 23000

⁷ Surface Location

UL or lot no.	Section	Township	Range	Lot Idn	Feet from the	North/South line	Feet from the	East/West line	County
M	4	20 S	37 E		1140	SOUTH	260	WEST	LEA

⁸ Proposed Bottom Hole Location If Different From Surface

UL or lot no.	Section	Township	Range	Lot Idn	Feet from the	North/South line	Feet from the	East/West line	County
M	33	19 S	37 E		10	SOUTH	10	WEST	LEA

Additional Well Information

¹¹ Work Type Code RE-ENTRY	¹² Well Type Code OIL	¹³ Cable/Rotary	¹⁴ Lease Type Code PRIVATE	¹⁵ Ground Level Elevation 3561'
¹⁶ Multiple Y	¹⁷ Proposed Depth 4000'	¹⁸ Formation GRAYBURG	¹⁹ Contractor	²⁰ Spud Date

²¹ Proposed Casing and Cement Program

Hole Size	Casing Size	Casing weight/foot	Setting Depth	Sacks of Cement	Estimated TOC
11	8.625	24#	395'	350sx	
7.875	5.5	17#	4000'	1100sx	

²² Describe the proposed program. If this application is to DEEPEN or PLUG BACK, give the data on the present productive zone and proposed new productive zone. Describe the blowout prevention program, if any. Use additional sheets if necessary.

BOP: Double Ram WP: 3000 TP: 2000

Apache is proposing:

**Permit Expires 2 Years From Approval
Date Unless Drilling Underway**

1. OPENHOLE COMPLETION, HOLE SIZE - 4.75". NO ADDITIONAL CASING OR CEMENT WILL BE USED.
2. SETTING A WHIPSTOCK AND KICKING OFF AT 3617', LANDING CURVE AT 3871'MD, 3780'TVD; TD AT 7862'MD, 3825'TVD.
3. ORIGINAL API NUMBER FOR THIS WELL WAS 30-025-38312

²³ I hereby certify that the information given above is true and complete to the best of my knowledge and belief.

Signature: *K Agee*

Printed name:
Kristina Agee

Title:
Drilling Tech I

E-mail Address:
kristina.agee@apachecorp.com

Date: 5/15/2013

Phone: 432-818-1940

OIL CONSERVATION DIVISION

Approved by:

Title:

Petroleum Engineer

Approval Date:

05/23/13

Expiration Date:

05/23/15

Conditions of Approval Attached ☐

HOBBS OCD

DISTRICT I

1825 N. French Dr., Hobbs, NM 88240
Phone (575) 393-6161 Fax: (575) 393-0720

DISTRICT II

811 S. First St., Artesia, NM 88210
Phone (575) 748-1283 Fax: (575) 748-0720

DISTRICT III

1000 Rio Brazos Rd., Aztec, NM 87410
Phone (505) 334-6178 Fax: (505) 334-6170

DISTRICT IV

1220 S. St. Francis Dr., Santa Fe, NM 87505
Phone (505) 476-3480 Fax: (505) 476-3482State of New Mexico
Energy, Minerals and Natural Resources Department

Form C-102

Revised August 1, 2011

Submit one copy to appropriate
District Office

OIL CONSERVATION DIVISION

1220 South St. Francis Dr.
Santa Fe, New Mexico 87505

WELL LOCATION AND ACREAGE DEDICATION PLAT

☐ AMENDED REPORT

API Number 30-025-	Pool Code 23000	Pool Name Eunice Monument; Grayburg - San Andres
Property Code 302708	Property Name North Monument G/SA Unit	Well Number 353H
OGRID No. 873	Operator Name APACHE CORPORATION	Elevation 3561

Surface Location

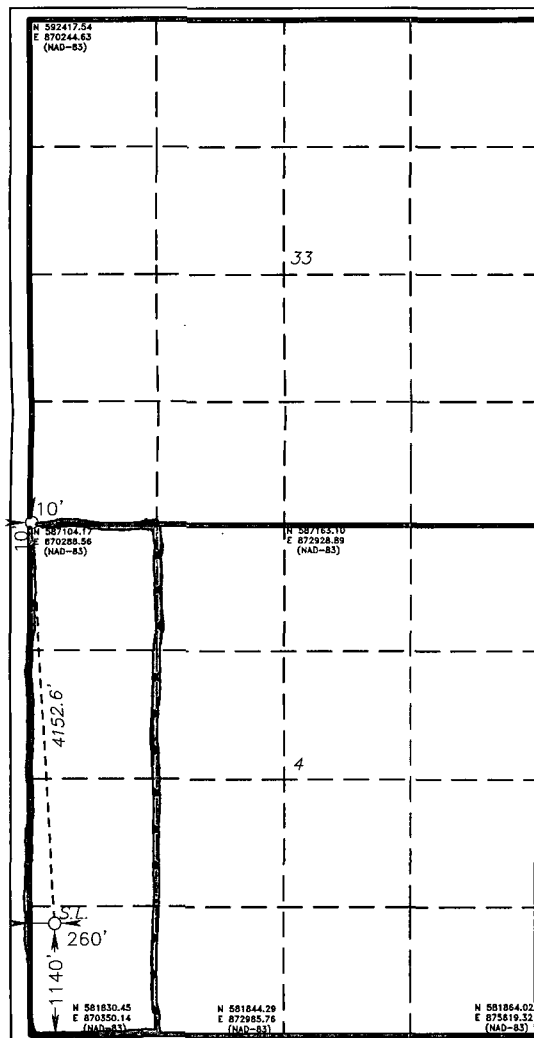
UL or lot No.	Section	Township	Range	Lot Idn	Feet from the	North/South line	Feet from the	East/West line	County
M	4	20 S	37 E		1140	SOUTH	260	WEST	LEA

Bottom Hole Location If Different From Surface

UL or lot No.	Section	Township	Range	Lot Idn	Feet from the	North/South line	Feet from the	East/West line	County
M	33	19 S	37 E		10	SOUTH	10	WEST	LEA

Dedicated Acres 160.55	Joint or Infill	Consolidation Code	Order No.
----------------------------------	-----------------	--------------------	-----------

NO ALLOWABLE WILL BE ASSIGNED TO THIS COMPLETION UNTIL ALL INTERESTS HAVE BEEN CONSOLIDATED
OR A NON-STANDARD UNIT HAS BEEN APPROVED BY THE DIVISION

PROPOSED BOTTOM
HOLE LOCATION

Lat - N 32°36'34.14"
Long - W 103°15'54.09"
NMSPC- N 587114.39
E 870298.47
(NAD-83)

Lat - N 32°36'33.71" **32.609364**
Long - W 103°15'52.37" **103.261547**
NMSPC- N 587052.440
E 829116.238
(NAD-27)

SURFACE LOCATION

Lat - N 32°35'53.14"
Long - W 103°15'51.08"
NMSPC- N 582973.09
E 870597.88
(NAD-83)

Lat - N 32°35'52.71" **32.597915**
Long - W 103°15'49.36" **103.263711**
NMSPC- N 582911.155
E 829415.447
(NAD-27)

OPERATOR CERTIFICATION

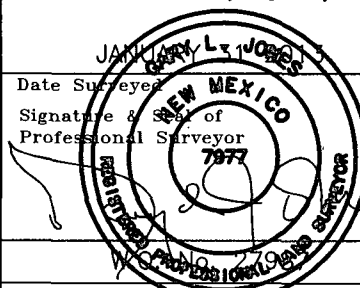
I hereby certify that the information contained herein is true and complete to the best of my knowledge and belief, and that this organization either owns a working interest or unleased mineral interest in the land including the proposed bottom hole location or has a right to drill this well at this location pursuant to a contract with an owner of such a mineral or working interest, or to a voluntary pooling agreement or a compulsory pooling order heretofore entered by the division.

K Agee 5/15/13
Signature Date

Kristina Agee
Printed Name
Kristina.agee@apachecorp.com
Email Address

SURVEYOR CERTIFICATION

I hereby certify that the well location shown on this plat was plotted from field notes of actual surveys made by me or under my supervision, and that the same is true and correct to the best of my belief.



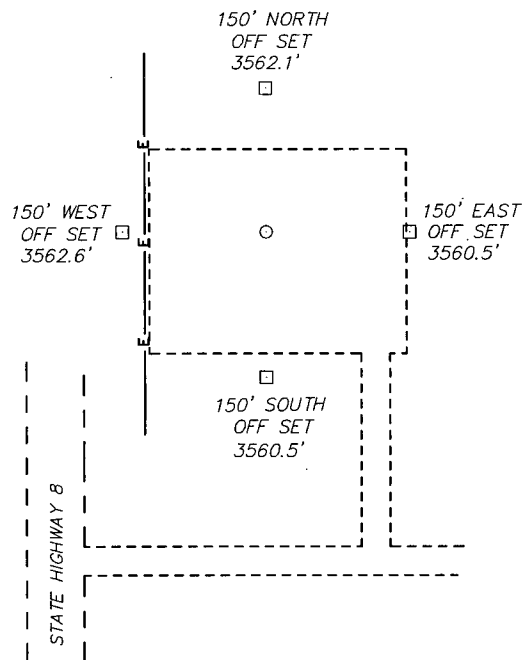
Date Surveyed
Signature & Seal of Professional Surveyor
Certificate No. Gary L. Jones 7977

BASIN SURVEYS 27987

SECTION 4, TOWNSHIP 20 SOUTH, RANGE 37 EAST, N.M.P.M.,
LEA COUNTY, NEW MEXICO.

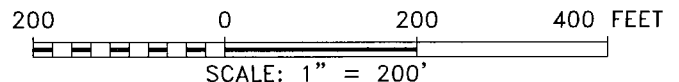
APACHE CORPORATION
NMGSAU #353 H
ELEV. - 3561
SURFACE LOCATION
Lat - N 32°35'53.14"
Long - W 103°15'51.08"
NMSPCE- N 582973.09
E 870597.88
(NAD-83)

Lat - N 32°35'52.71"
Long - W 103°15'49.36"
NMSPCE- N 582911.155
E 829415.447
(NAD-27)



DRIVING DIRECTIONS

FROM HIGHWAY 8 AND BILLY WALKER ROAD GO SOUTH .7 MILES TO
LOCATION.



BASIN SURVEYS P.O. BOX 1786-HOBBS, NEW MEXICO

W.O. Number: 27987 Drawn By: D. JONES

Date: 02-07-2013 Disk: DAJ 27987

APACHE CORPORATION

REF: NMGSAU #353 H / WELL PAD TOPO

THE NMGSAU #353 H LOCATED 1140'

FROM THE SOUTH LINE AND 260' FROM THE WEST LINE OF

SECTION 4, TOWNSHIP 20 SOUTH, RANGE 37 EAST,

N.M.P.M., LEA COUNTY, NEW MEXICO.

Survey Date: 01-31-2013 Sheet 1 of 1 Sheets



NMGSAU #353 H

Located 260' FSL and 1140' FWL

Section 4, Township 20 South, Range 37 East,
N.M.P.M., Lea County, New Mexico.

basin
surveys
focused on excellence
in the oilfield

P.O. Box 1786
1120 N. West County Rd.
Hobbs, New Mexico 88241
(575) 393-7316 - Office
(575) 392-2206 - Fax
basinsurveys.com

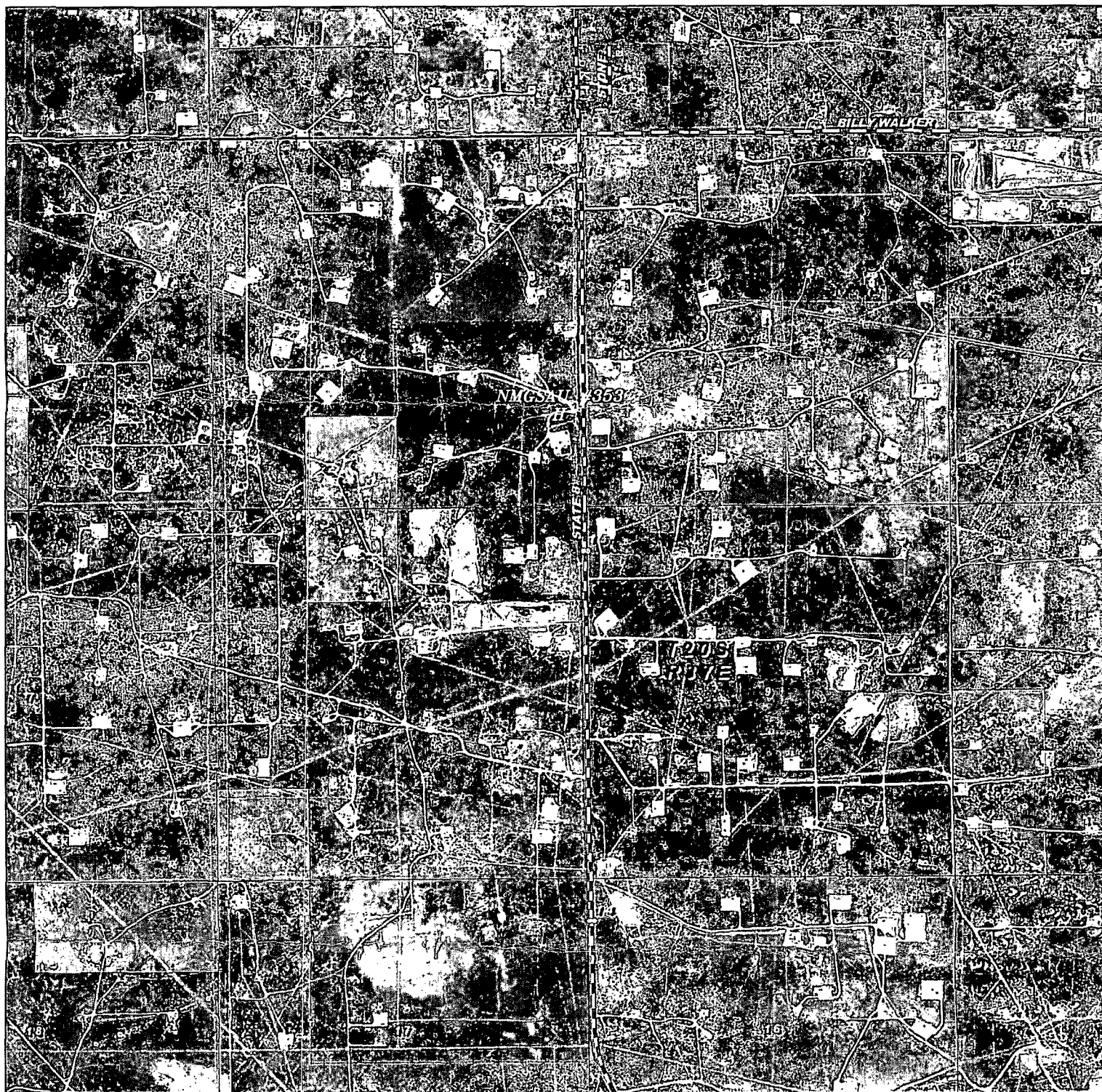
W.O. Number: DAJ 27987

Survey Date: 01-31-2013

Scale: 1" = 2000'

Date: 02-07-2013

APACHE
CORPORATION



NMGSAU #353 H
 Located 260' FSL and 1140' FWL
 Section 4, Township 20 South, Range 37 East,
 N.M.P.M., Lea County, New Mexico.

basin
surveys
 focused on excellence
 in the oilfield

P.O. Box 1786
 1120 N. West County Rd.
 Hobbs, New Mexico 88241
 (575) 393-7316 - Office
 (575) 392-2206 - Fax
 basin-surveys.com

W.O. Number: DAJ 27987

Scale: 1" = 2000'

YELLOW TINT - USA LAND
 BLUE TINT - STATE LAND
 NATURAL COLOR - FEE LAND

APACHE
 CORPORATION