

30025-41197



HOBBS OCD

MAY 28 2013

RECEIVED

H<sub>2</sub>S Contingency Plan

H<sub>2</sub>S Contingency Plan Holders:

Attached is an H<sub>2</sub>S Contingency Plan for COPC Permian Drilling working in the West Texas and Southeastern New Mexico areas operated by ConocoPhillips Company.

If you have any questions regarding this plan, please call Tom Samarripa at ConocoPhillips Company, 432.368.1263.

## **Table of Contents**

### **Section**

#### **I. Purpose**

#### **II. Scope**

#### **III. Procedures**

#### **IV. Emergency Equipment and Maintenance**

Emergency Equipment Suppliers

General Information

H<sub>2</sub>S Safety Equipment and Monitoring Systems

#### **V. Emergency Call List**

#### **VI. Public/Media Relations**

#### **VII. Public Notification/Evacuation**

#### **VIII. Forms/Reports**



# **HYDROGEN SULFIDE (H<sub>2</sub>S) OPERATIONS**

Contingency Plan  
For  
Permian Drilling Operations

ConocoPhillips Company  
Mid-Continent Business Unit  
Permian Asset Area

## **I. PURPOSE**

The purpose of this Contingency Plan is to provide an organized plan of action for alerting and protecting the public following the release of a potentially hazardous volume of hydrogen sulfide. This plan prescribes mandatory safety procedures to be followed in the event of a release of H<sub>2</sub>S into the atmosphere from exploration and production operations included in the scope of this plan. The extent of action taken will be determined by the supervisor and will depend on the severity and extent of H<sub>2</sub>S release. Release of H<sub>2</sub>S must be reported to the Drilling Superintendent and documented on the IADC and in Wellview.

## **II. SCOPE**

This Contingency plan shall cover the West Texas and Southeastern New Mexico areas, which contain H<sub>2</sub>S gas and could result in a release where the R.O.E. is greater than 100 ppm at 50' and less than 3000' and does not include a public area and 500 ppm R.O.E. does not include a public road. Radius of exposure is defined as the maximum distance from the source of release that a specified calculated average concentration of H<sub>2</sub>S could exist under specific weather conditions.

## **Emergency Procedures**

### **Responsibility**

In the event of a release of potentially hazardous amounts of H<sub>2</sub>S, all personnel will immediately proceed upwind/ crosswind to the nearest designated briefing area. The COPC Drilling Rep. will immediately, upon assessing the situation, set this into action by taking the proper procedures to contain the gas and notify appropriate people and agencies.

1. In an emergency situation, the Drilling Rep. on duty will have complete responsibility and will take whatever action is deemed necessary in an emergency situation to insure the personnel's safety, to protect the well and to prevent property damage.
2. The Toolpusher will assume all responsibilities of the Drilling Rep. in an emergency situation in the event the Drilling Rep. becomes incapacitated.
3. Advise each contractor, service company, and all others entering the site that H<sub>2</sub>S may be encountered and the potential hazards that may exist.
4. Authorize the evacuation of local residents if H<sub>2</sub>S threatens their safety.
5. Keep the number of persons on location to a minimum during hazardous operations.
6. Direct corrective actions to control the flow of gas.
7. Has full responsibility for igniting escaping gas to reduce the toxicity hazard.  
This should be used **ONLY AS A LAST RESORT**.

## **H2S Safety Equipment and Monitoring Systems**

An H2S emergency response package will be maintained at locations requiring H2S monitoring. The package will contain at a minimum the following:

3 – Fixed H2S sensors located as follows:

- 1 – on the rig floor
- 1 – at the Bell Nipple
- 1 – at the Shale Shaker or Flowline

1 – Entrance Warning Sign located at the main entrance to the location, with warning signs and colored flags to determine the current status for entry into the location.

2 – Windssocks that are clearly visible.

1 – Audible warning system located on rig floor

2 – Visual warning systems (Beacon Lights)

- 1 – located at the rig floor
- 1 – located in the mud mixing room

**Note: All alarms (audible and visual) should be set to alarm at 10 ppm.**

2 - Briefing areas clearly marked

- 2 - SCBA's at each briefing area
- 1- SCBA located at the Drilling Reps office

**Note:**

- 1. All SCBA's must be positive pressure type only!!!**
- 2. All SCBA's must either be Scott or Drager brand.**
- 3. All SCBA's face pieces should be size large, unless otherwise specified by the Drilling Supervisor.**

5 – Emergency Escape Paks located at Top Doghouse.

Note: Ensure provisions are included for any personnel working above rig floor in derrick.

1 – Tri or Quad gas monitor located at the Drilling Reps office. This will be used to determine if the work area is safe to re-enter prior to returning to work following any alarm.

## **V. EMERGENCY CALL LIST:**

The following is a priority list of personnel to contact in an emergency situation:

<b>Supervisory Personnel</b>	<b>Office No.</b>	<b>Home</b>	<b>Cellular</b>
<b>R.W. "Cottton" Hair</b> Permian Drilling Supt.	432.368.1302	432.563.9467	432.556.9116
<b>Dennis Paschall</b> Permian Drilling Field Supt.	432.368.1517	432.683.9400	432.238.3150
<b>Tom Samarripa</b> WSER	423.368.1263	432.367.4961	432.556.9113
<b>Ty Maxey</b> Permian Asset Operations Manager	432.368.1100		281.217.8492
<b>Leo Gatson</b> Safety and Environmental Coordinator	432.368.1248		432.631.066
<b>Lynn Dooley</b> Drilling Mngr.	832.486.2567	281.225.8063	281.435.3517

### **EMERGENCY CALL LIST: State Officials**

#### **Regulatory Agencies**

##### **New Mexico Oil Conservation Commission**

P. O. Box 1980  
Hobbs, New Mexico 88240-1980

Office: 575.393.6161

##### **Bureau of Land Mngt.**

Carlsbad Field Office  
620 E. Greene St.  
Carlsbad, NM 88220

Office: 575.234.5972

Fax: 575.885.9264

BLM 24 Hr on call # Lea County: 575-393-3612

### **EMERGENCY CALL LIST: Local Officials**

Refer to the Location Information Sheet

**Note: The LIS should include any area residents (i.e. rancher's house, etc)**



## ConocoPhillips Emergency Call List and Location Information Sheet

**ConocoPhillips-** 281-293-3600

Drilling Superintendent	Cotton Hair	Office: 432-368-1302 Cell: 432-556-9116
Safety (WSER)	Tom Samarripa	Office: 432-368-1263 Cell: 432-556-9113
Drilling Engineer	Steve Moore	Office: 832-486-2459 Cell: 281-467-7596
Regulatory Contact	Susan Maunder	Office: 432-688-6913 Cell: 432-556-6501

### **Emergency Numbers**

Hospital: Lea Co. Regional Medical Center (Hobbs) .....575-492-5000  
Ambulance: Hobbs Fire Dept. ....575-397-9308  
Air Ambulance: Care Star .....888-624-3571  
                    Aero Star .....800-627-2376  
Fire Dept. (Hobbs) .....575-397-9308  
                    (Maljamar non-emerg) .....575-676-4100  
State Police (Artesia) .....575-748-9718  
                    (Hobbs) .....575-392-5580  
Sheriff (Lovington)..... 575-396-3611  
Police (Lovington) .....575-396-5166  
NMOCD .....575-393-6161  
                    (Emerg) .....575-370-3186  
BLM Switchboard.....575-393-3612  
BLM 24 Hr on Call, Lea County.....575-393-3612  
New Mexico Emergency Response Comm (Santa Fe) .....505-476-9600  
New Mexico State Emerg Ops Ctr .....505-476-9635  
National Emerg Response Center .....800-424-8802

**Number of Residences within 1 mile of Well:** There are no residences within one mile of the well to be drilled.

## **VI. Public Media Relations**

The **Public Information Officer** becomes the ConocoPhillips on-scene contact (once designated by the Phillips On-Scene Incident Commander).

Confers with Houston Office's Human Relations Representative, who is responsible for assisting in the coordination of local public relations duties.

Answer media questions honestly and **only with facts**, do not speculate about the cause, amount of damage, or the potential impact of the incident on the community, company, employees, or environment. (This information will be formally determined in the incident investigation.)

If you are comfortable answering a question or if you are unsure of the answer, use terms such as the following:

- "I do not know. I will try to find out."
- I am not qualified to answer that question, but I will try to find someone who can."
- "It is under investigation."

**Note:**

**Do Not Say "No Comment."** (This implies a cover-up.)

**Do Not Disclose Names of Injured or Dead!** Confer with the Houston Office's Human Relations Representative, who is responsible for providing that information.

## **VII. Public Notification/Evacuation**

### **Alert and/or Evacuate People within the Exposure Area**

1. **Public Notification** – If the escape of gas could result in a hazard to area residents, the general public, or employees, the person **first** observing the leak should take **immediate** steps to cause notification of any nearby residents. The avoidance of injury or loss of life should be of prime consideration and given top priority in all cases. If the incident is of such magnitude, or at such location as to create a hazardous situation, local authorities will be requested to assist in the evacuation and roadblocks of the designated area until the situation can be returned to normal.

Note: Bilingual employees may be needed to assist in notification of residents.

2. **Evacuation Procedures** – Evacuation will proceed upwind from the source of the release of H<sub>2</sub>S. Extreme caution should be exercised in order to avoid any depressions or low-lying areas in the terrain. The public area within the radius of exposure should be evacuated in a southwesterly and southeasterly direction so as to avoid the prevailing southern wind direction.

Roadblocks and the staging area should be established as necessary for current wind conditions.

**Note:** In all situations, consideration should be given to wind direction and weather conditions. H<sub>2</sub>S is heavier than air and can settle in low spots. Shifts in wind direction can also change the location of possible hazardous areas.

## **VIII. FORMS & REPORTS**

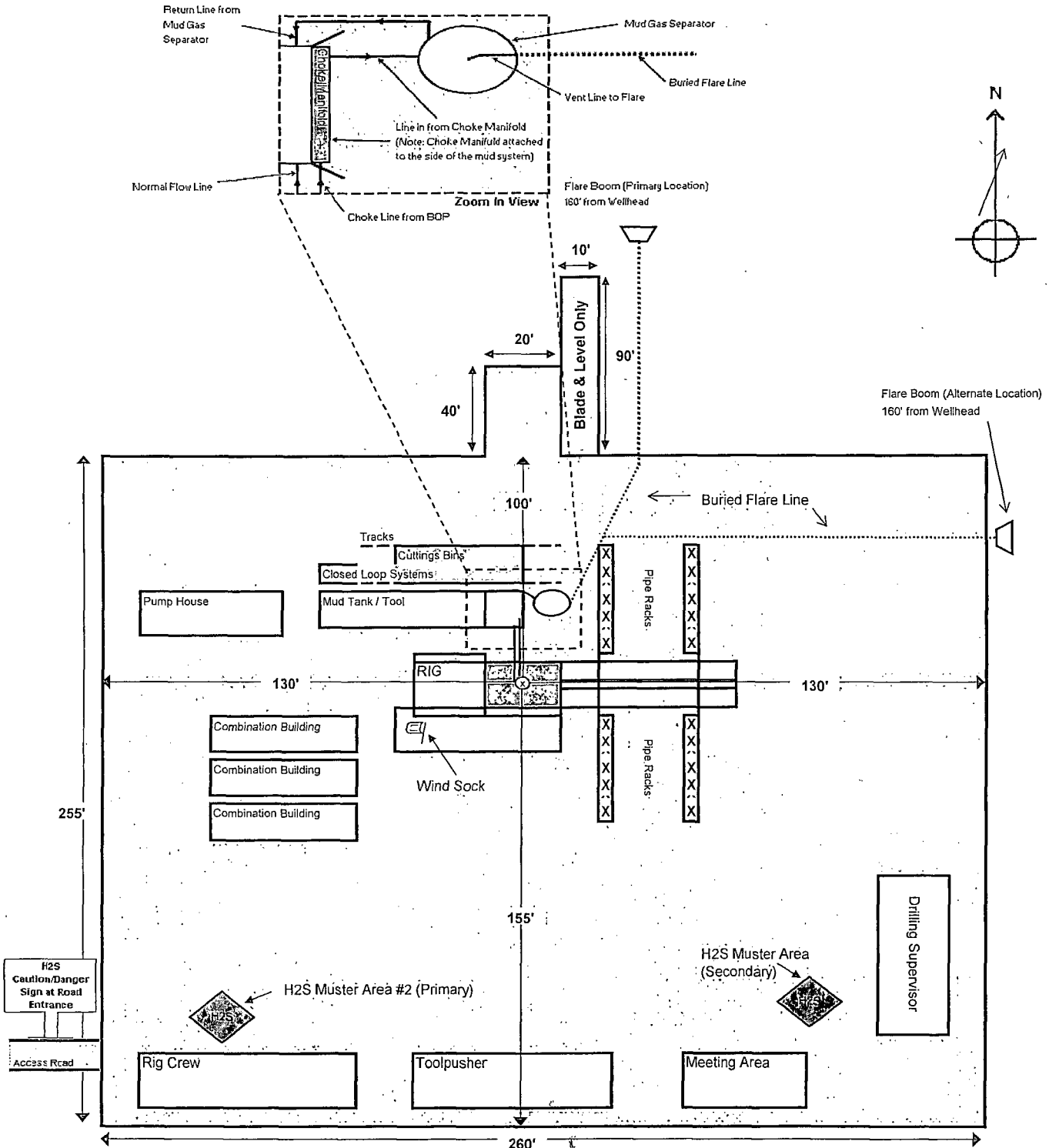
- I. Incident Log
- II. Preliminary Emergency Information Sheet
- III. Emergency Drill Report
- IV. Onshore Hazardous Material Spill/Release Report Form
- V. Immediate Report of Occupational Injury or Illness
  - Report of Accident-Public Contractor
  - Report of Loss or Damage to Company Property
  - Report of Automotive Incident

# ConocoPhillips

Location Schematic and Rig Layout  
for Closed Loop System  
Precision #822  
(PICTURE NOT TO SCALE)

Drawn by:  
James Chen  
Drilling Engineer, ConocoPhillips Company  
Date: 12-November-2012 (updated March 2013)

NOTE: There are two muster areas depending on the prevailing wind direction, generally south in this area. The muster area that is furthest upwind/crosswind will be the designated area for briefing and assessing the situation. In the event a full evacuation is deemed necessary, all personnel will exit the location via the access road. If the main access road is blocked off, they will exit via a secondary road (if available) or walk off route in the upwind/crosswind direction.

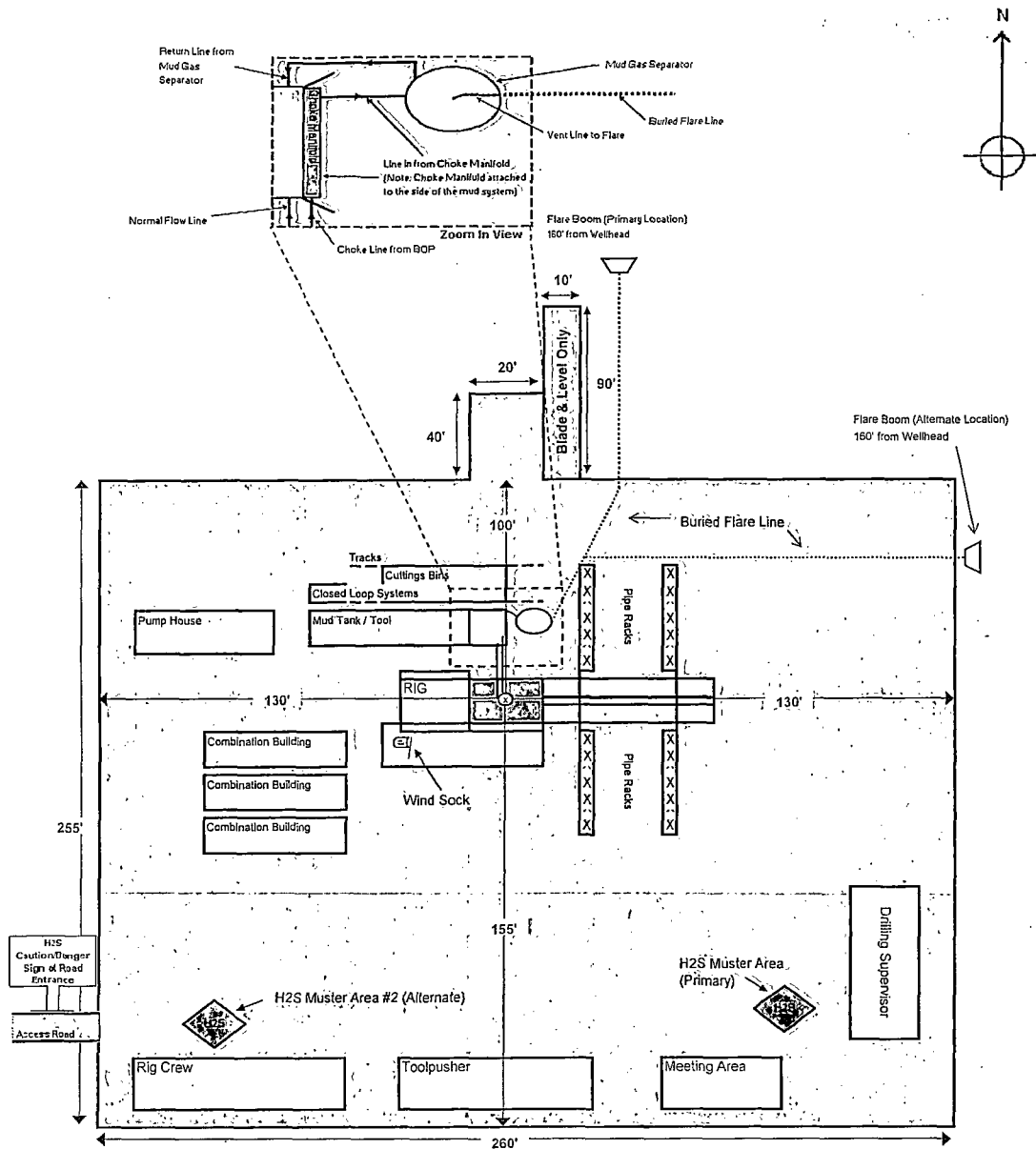


# RIG LAYOUT

## ConocoPhillips Location Schematic and Rig Layout

Precision #822  
(PICTURE NOT TO SCALE)

Drawn by:  
James Chen  
Drilling Engineer, ConocoPhillips Company  
Date: 12-November-2012



**RUBY FEDERAL #35**  
Located 2310' FNL and 2310' FWL  
Section 18, Township 17 South, Range 32 East,  
N.M.P.M., Lea County, New Mexico.

**basin**  
**surveys**  
focused on excellence  
in the oilfield

P.O. Box 1786  
1120 N. West County Rd.  
Hobbs, New Mexico 88241  
(575) 393-7316 - Office  
(575) 392-2206 - Fax  
basinsurveys.com

W.O. Number: JMS 27139

Survey Date: 08-22-2012

Scale: 1" = NONE

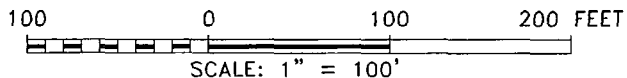
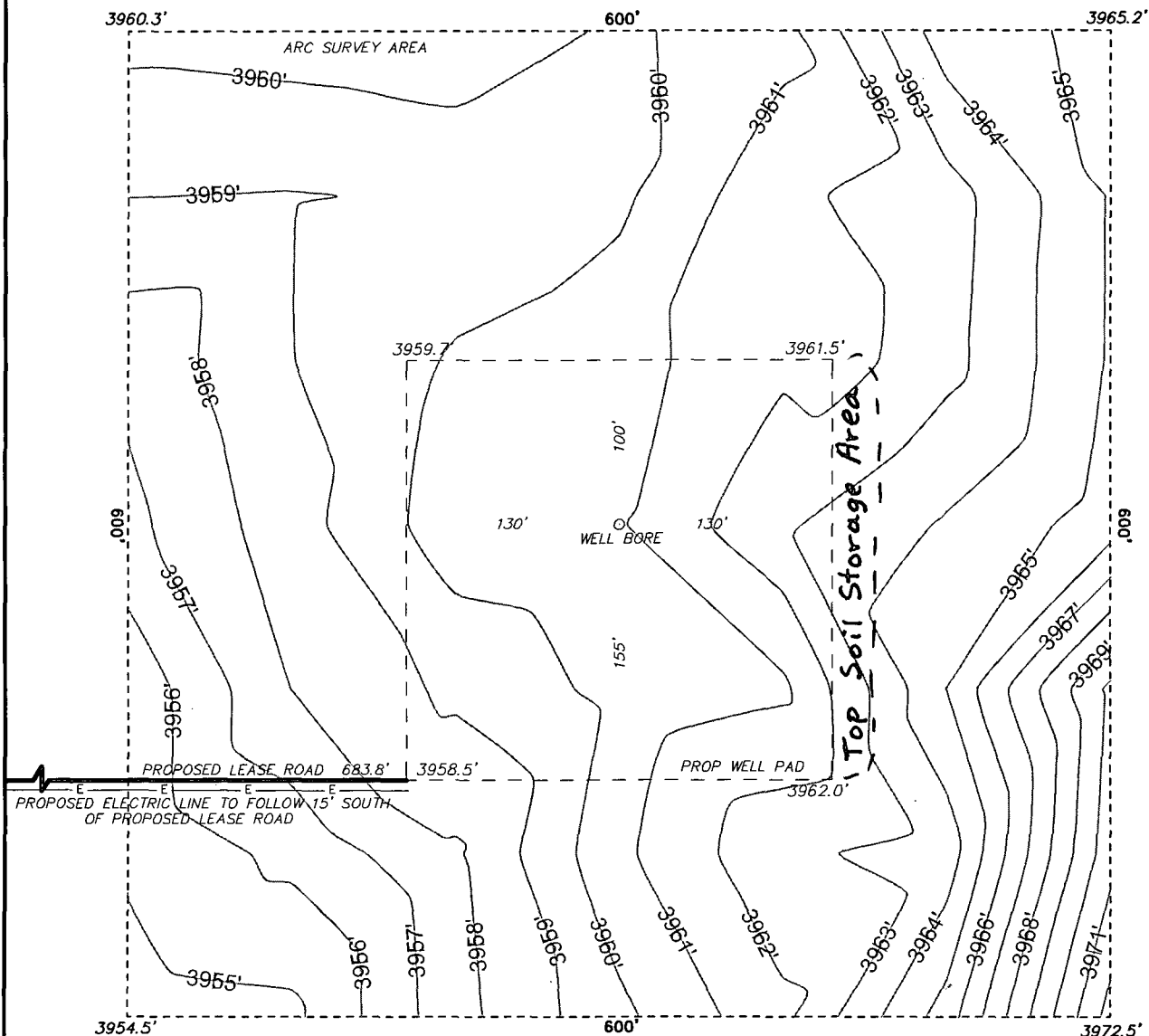
Date: 09-11-2012

**ConocoPhillips**

Sheet 8 of 10 Sheets

SECTION 18, TOWNSHIP 17 SOUTH, RANGE 32 EAST, N.M.P.M.,  
LEA COUNTY, NEW MEXICO.

WELL PAD  
DETAIL



**BASIN SURVEYS** P.O. BOX 1786 - HOBBS, NEW MEXICO

W.O. Number: 27139 Drawn By: J. SMALL

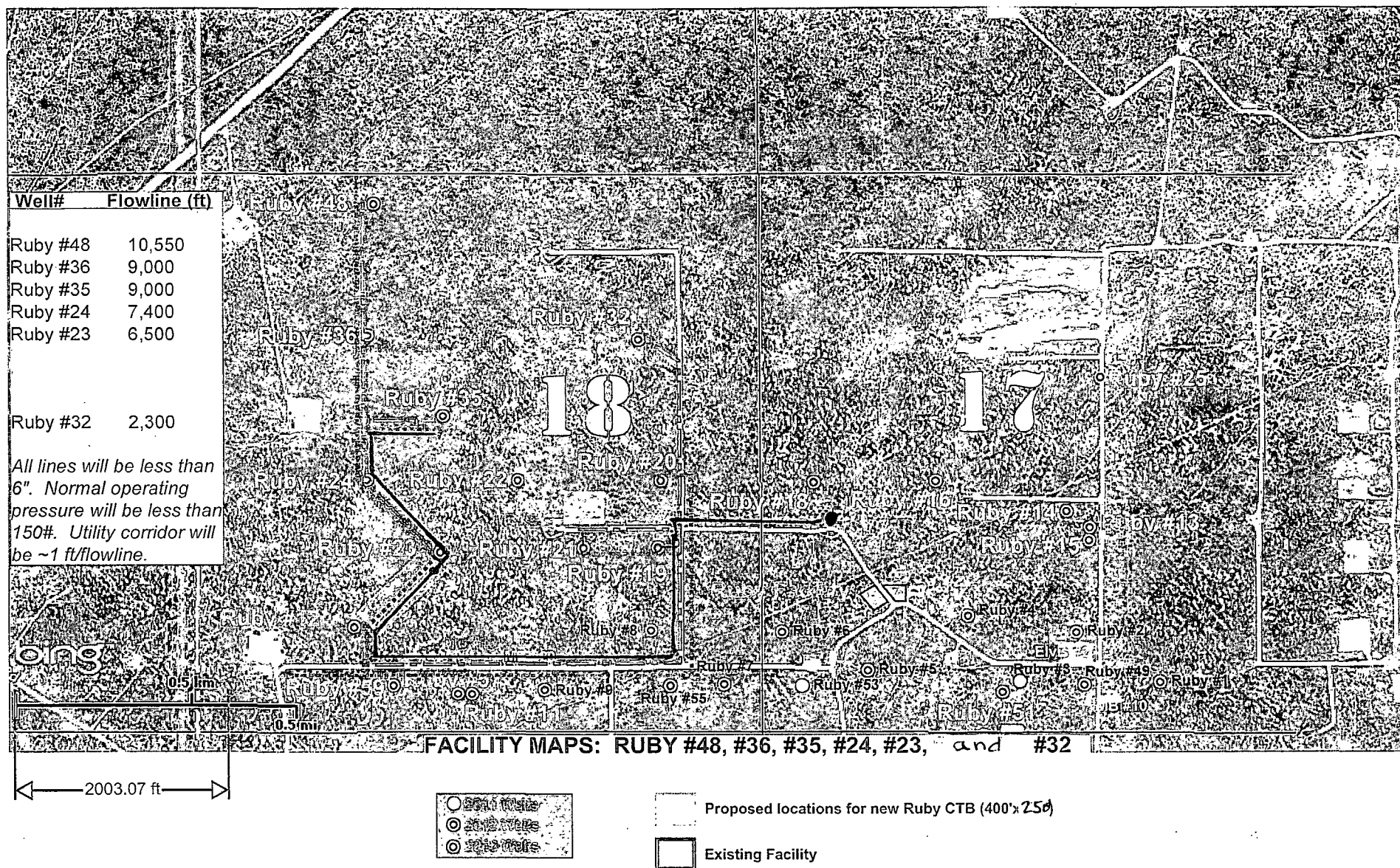
Date: 09-11-2012 Disk: JMS 27139

**ConocoPhillips**

REF: RUBY FEDERAL #35 / WELL PAD DETAIL

THE RUBY FEDERAL #35 LOCATED 2310'  
FROM THE NORTH LINE AND 2310' FROM THE WEST LINE OF  
SECTION 18, TOWNSHIP 17 SOUTH, RANGE 32 EAST,  
N.M.P.M., LEA COUNTY, NEW MEXICO.

Survey Date: 08-22-2012 Sheet 3 of 9 Sheets



## Gemstone Development Map

..... Powerline (follows roads)

Area will be walked

Flowlines (NPS 6 in or less) to new Ruby CTB (follow roads)

Completion flow line (follows road)

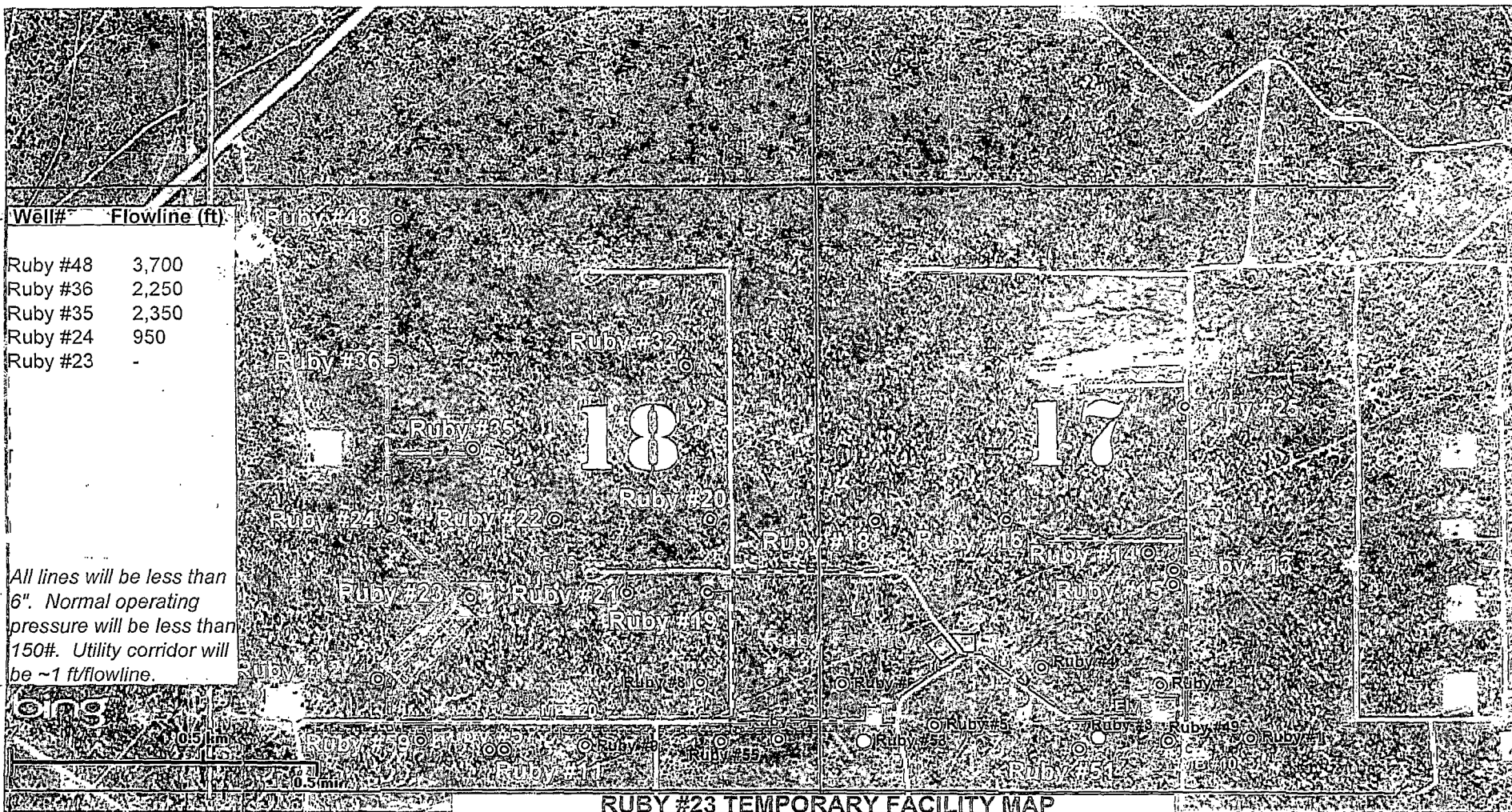


DISCLAIMER: This map is for informational purposes and has not been prepared for, nor is it suitable for legal, surveying, or engineering purposes. Users of this information should review or consult the primary data and information sources to ascertain the usability of the information. ConocoPhillips makes no warranty or guarantee as to the content, accuracy, timeliness, or completeness of any of the data provided and assumes no legal responsibility for the information contained herein.

© Copyright 2010 xxxxxxx. All rights reserved.

ConocoPhillips





Well#	Flowline (ft)
Ruby #48	3,700
Ruby #36	2,250
Ruby #35	2,350
Ruby #24	950
Ruby #23	-

All lines will be less than 6". Normal operating pressure will be less than 150#. Utility corridor will be ~1 ft/flowline.

RUBY #23 TEMPORARY FACILITY MAP

2003.07 ft



- Proposed locations for Temporary Facility (Ruby #23) Well pad
- Existing Facility

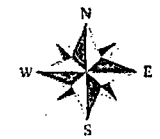


# Gemstone Development Map

Area will be walked

..... Powerline

--- Flowlines (NPS 6 in or less) to Temporary Facility



DISCLAIMER: This map is for informational purposes and has not been prepared for, nor is it suitable for legal, surveying, or engineering purposes. Users of this information should review or consult the primary data and information sources to ascertain the usability of the information. ConocoPhillips makes no warranty or guarantee as to the content, accuracy, timeliness, or completeness of any of the data provided and assumes no legal responsibility for the information contained herein.

© Copyright 2010 xxxxxx. All rights reserved.

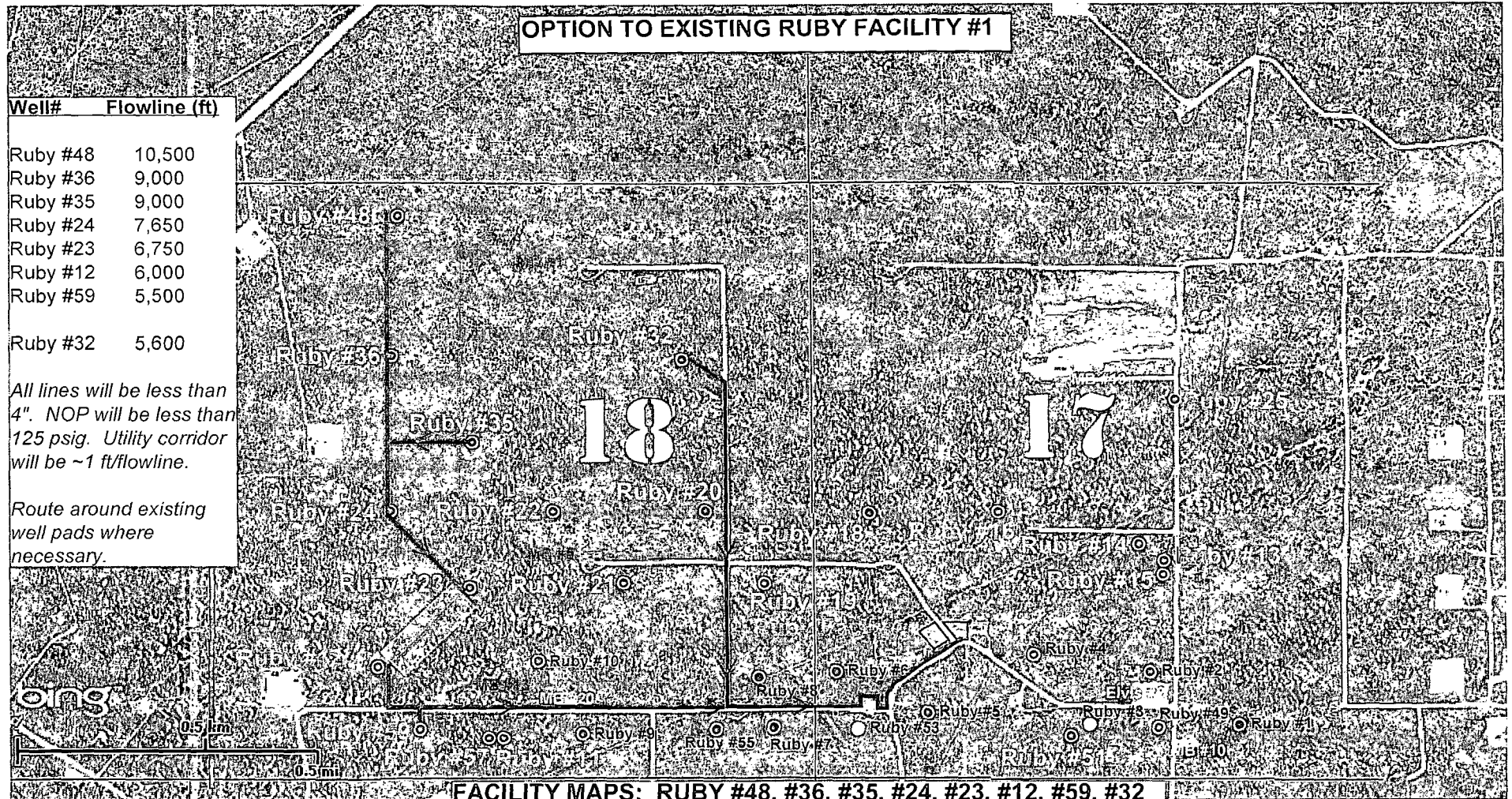
# OPTION TO EXISTING RUBY FACILITY #1

Well# Flowline (ft)

Ruby #48	10,500
Ruby #36	9,000
Ruby #35	9,000
Ruby #24	7,650
Ruby #23	6,750
Ruby #12	6,000
Ruby #59	5,500
Ruby #32	5,600

All lines will be less than 4". NOP will be less than 125 psig. Utility corridor will be ~1 ft/flowline.

Route around existing well pads where necessary.



FACILITY MAPS: RUBY #48, #36, #35, #24, #23, #12, #59, #32



Existing Facility

Flowlines (NPS 4 in or less) to existing Ruby #1 Facility

Area will be walked

MAY 2013

ConocoPhillips

## Gemstone Development Map

DISCLAIMER: This map is for informational purposes and has not been prepared for, nor is it suitable for legal, surveying, or engineering purposes. Users of this information should review or consult the primary data and information sources to ascertain the usability of the information. ConocoPhillips makes no warranty or guarantee as to the content, accuracy, timeliness, or completeness of any of the data provided and assumes no legal responsibility for the information contained hereon.  
© Copyright 2010 xxxxxxx. All rights reserved.



# OPTION TO NEW RUBY CTB

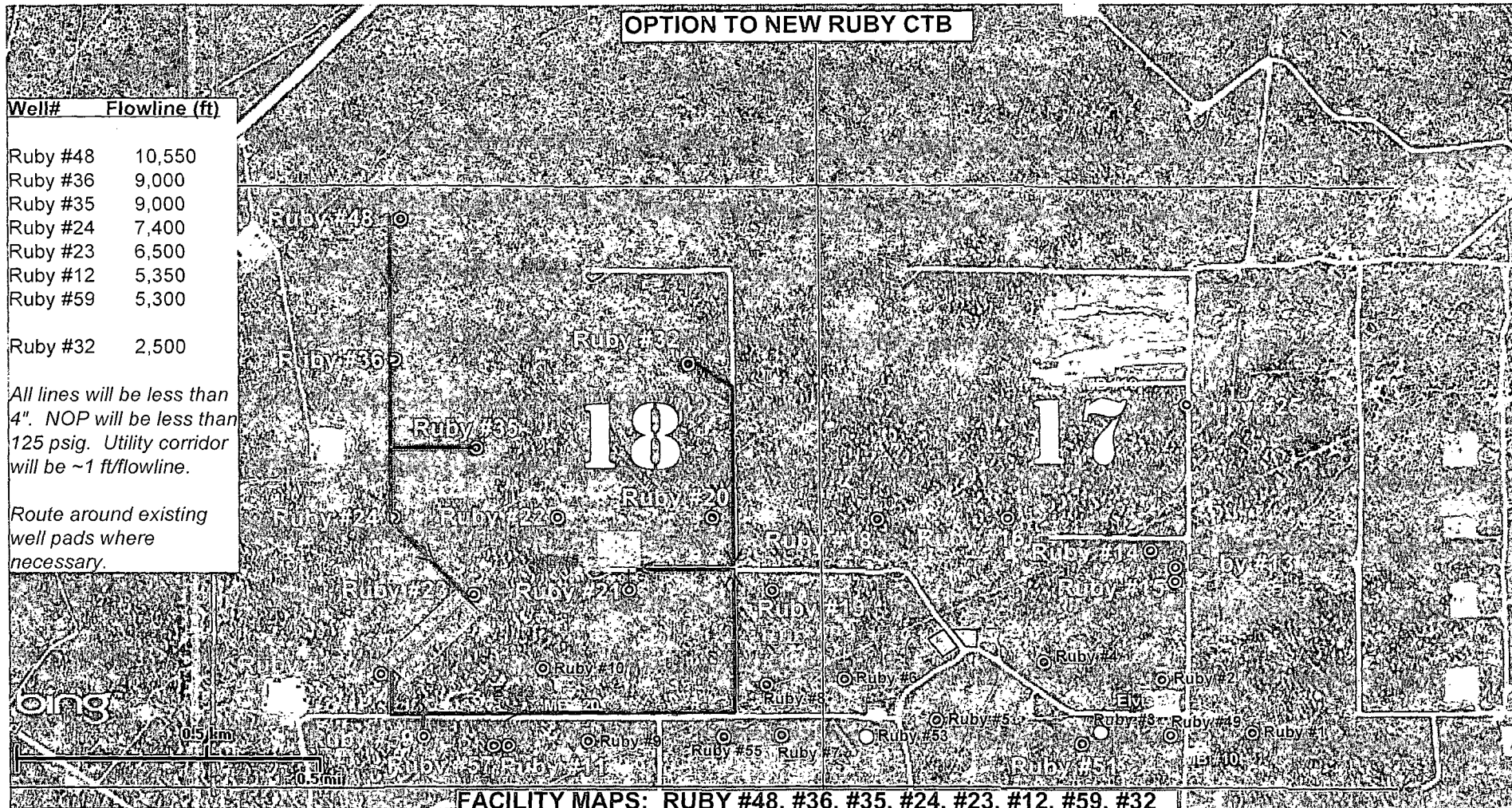
Well# Flowline (ft)

Ruby #48 10,550  
 Ruby #36 9,000  
 Ruby #35 9,000  
 Ruby #24 7,400  
 Ruby #23 6,500  
 Ruby #12 5,350  
 Ruby #59 5,300

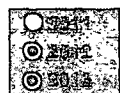
Ruby #32 2,500

All lines will be less than 4". NOP will be less than 125 psig. Utility corridor will be ~1 ft/flowline.

Route around existing well pads where necessary.



FACILITY MAPS: RUBY #48, #36, #35, #24, #23, #12, #59, #32



Proposed locations for new Ruby CTB (400'x300')



Existing Facility

Flowlines (NPS 4 in or less) to new Ruby CTB

Area will be walked

MAY 2013

## Gemstone Development Map



DISCLAIMER: This map is for informational purposes and has not been prepared for, nor is it suitable for legal, surveying, or engineering purposes. Users of this information should review or consult the primary data and information sources to ascertain the usability of the information. ConocoPhillips makes no warranty or guarantee as to the content, accuracy, timeliness, or completeness of any of the data provided and assumes no legal responsibility for the information contained hereon.  
 © Copyright 2010 xxxxxxx. All rights reserved.

