

RECEIVED

AUG 23 2010

DISTRICT I

1625 N. FRENCH DR., HOBBS, NM 88240

HOBBSOCD

State of New Mexico
Energy, Minerals and Natural Resources Department

DISTRICT II

1301 W. GRAND AVENUE, ARTESIA, NM 88210

DISTRICT III

1000 RIO BRAZOS RD., AZTEC, NM 87410

DISTRICT IV

11885 S. ST. FRANCIS DR., SANTA FE, NM 87505

OIL CONSERVATION DIVISION

11885 SOUTH ST. FRANCIS DR.
Santa Fe, New Mexico 87505

Form C-102

Revised October 12, 6605

Submit to Appropriate District Office

State Lease - 4 Copies

For Lease - 3 Copies

WELL LOCATION AND ACREAGE DEDICATION PLAT

☐ AMENDED REPORT

AFT Number 30-005-29153	Pool Code 11700	Permit Name Cedar Point; Permo Upper Penn
Property Code 38291	Property Name CEDAR POINT 14-L FEDERAL	Well Number 1
OGRID No. 164726	Operator Name HUNT CIMARRON LIMITED PARTNERSHIP	Elevation 4136'

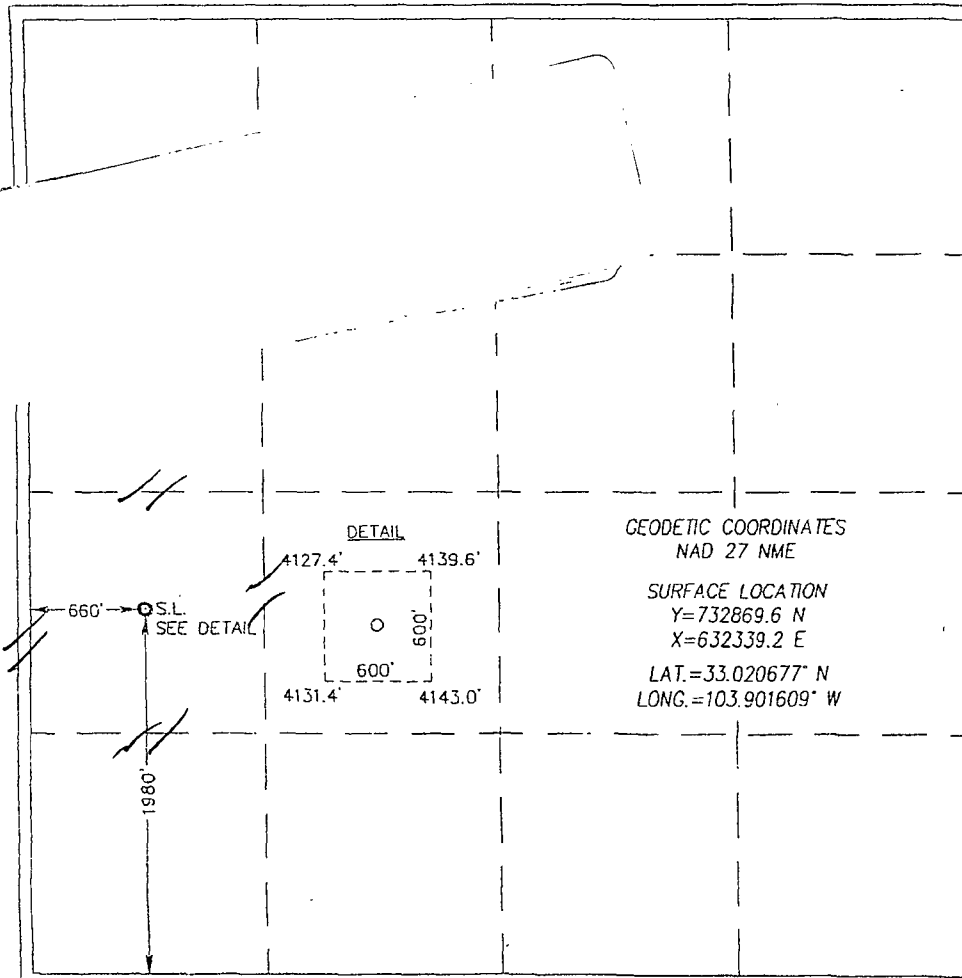
Surface Location

UL or lot No.	Section	Township	Range	Lot Idn	Feet from the	North/South line	Feet from the	East/West line	County
L	14	15-S	30-E		1980	SOUTH	660	WEST	CHAVES

Bottom Hole Location If Different From Surface

UL or lot No.	Section	Township	Range	Lot Idn	Feet from the	North/South line	Feet from the	East/West line	County
Dedicated Acres 4.0	Joint or Infill	Consolidation Code	Order No.						

NO ALLOWABLE WILL BE ASSIGNED TO THIS COMPLETION UNTIL ALL INTERESTS HAVE BEEN CONSOLIDATED
OR A NON-STANDARD UNIT HAS BEEN APPROVED BY THE DIVISION



OPERATOR CERTIFICATION

I hereby certify that the information herein is true and complete to the best of my knowledge and belief, and that this organization either owns a working interest or unleased mineral interest in the land including the proposed bottom hole location or has a right to drill this well at this location pursuant to a contract with an owner of such mineral or working interest, or to a voluntary pooling agreement or a compulsory pooling order heretofore entered by the division.

Richard C. Gilliland 2/19/10
Signature Date

Richard C. Gilliland

Printed Name

SURVEYOR CERTIFICATION

I hereby certify that the well location shown on this plat was plotted from field notes of actual surveys made by me or under my supervision, and that the same is true and correct to the best of my belief.

Gary G. Eidson 2/19/10
Date Surveyed Signature & Seal of Professional Surveyor
DSS
FEBRUARY 11 2010
GARY G. EIDSON
RONALD J. EIDSON
12641
3239

Certificate No. GARY EIDSON 12641
RONALD J. EIDSON 3239

JUN 11 2013