

District I
1625 N. French Dr., Hobbs, NM 88240
Phone: (575) 393-6161 Fax: (575) 393-0720

District II
811 S. First St., Artesia, NM 88210
Phone: (575) 748-1283 Fax: (575) 748-9720

District III
1000 Rio Brazos Road, Aztec, NM 87410
Phone: (505) 334-6178 Fax: (505) 334-6170

District IV
1220 S. St. Francis Dr., Santa Fe, NM 87505
Phone: (505) 476-3460 Fax: (505) 476-3462

State of New Mexico

Form C-101
Revised November 14, 2012

Energy Minerals and Natural Resources

Oil Conservation Division

☐ AMENDED REPORT

1220 South St. Francis Dr.

Santa Fe, NM 87505

HOEBS OCD

JUN 17 2013

APPLICATION FOR PERMIT TO DRILL, RE-ENTER, DEEPEN, PLUGBACK, OR ADD A ZONE

1. Operator Name and Address LINN Operating, Inc. 600 Travis, Suite 5100 Houston, Texas 77002		2. OGRID Number 269324
3. Property Code 309534		4. Property Name Caprock Maljamar Unit
5. ABL Number 30025-41216		6. Well No. 600

7. Surface Location

UL - Lot	Section	Township	Range	Lot Idn	Feet from	N/S Line	Feet From	E/W Line	County
0	13	17 S	32 E		89	South	1335	East	Lea

8. Proposed Bottom Hole Location

UL - Lot	Section	Township	Range	Lot Idn	Feet from	N/S Line	Feet From	E/W Line	County
0	13	17 S	32 E		89	South	1335	East	Lea

9. Pool Information

Pool Name Maljamar; Grayburg-San Andres	Pool Code 43329
--	--------------------

Additional Well Information

11. Work Type N	12. Well Type O	13. Cable/Rotary R	14. Lease Type S	15. Ground Level Elevation 4098
16. Multiple N	17. Proposed Depth 5500	18. Formation San Andres	19. Contractor TBD	20. Spud Date 9/1/2013
Depth to Ground water 1127'		Distance from nearest fresh water well 4222'		Distance to nearest surface water 5636'

21. Proposed Casing and Cement Program

Type	Hole Size	Casing Size	Casing Weight/ft	Setting Depth	Sacks of Cement	Estimated TOC
Surface	12 1/4	8 5/8	24.00# J55-STC	1180'	618	Surface
Production	7 7/8	5 1/2	15.50# J55-LTD	5500'	765	Surface

Casing/Cement Program: Additional Comments

22. Proposed Blowout Prevention Program

Type	Working Pressure	Test Pressure	Manufacturer
Double	2000 PSI	3000 PSI	Cameron

Permit Expires 2 Years From Approval
Date Unless Drilling Underway

23. I hereby certify that the information given above is true and complete to the best of my knowledge and belief.
I further certify that I have complied with 19.15.14.9 (A) NMAC ☐ and/or 19.15.14.9 (B) NMAC ☐, if applicable.
Signature: *Terry Callahan*

Printed name: Terry Callahan

Title: Regulatory Compliance Specialist III

E-mail Address: tcallahan@linnenergy.com

Date: 6/12/2013

Phone: 281-840-4272

OIL CONSERVATION DIVISION

Approved By:

Title:

Approved Date:

Conditions of Approval Attached

[Signature]
Petroleum Engineer

Expiration Date:

06/18/13

06/18/15

HOBBS OCD

DISTRICT I

1025 N. French Dr., Hobbs, NM 88240
Phone (505) 303-0101 Fax: (505) 303-0720

DISTRICT II

1301 W. Grand Avenue, Artesia, NM 88210
Phone (505) 334-8176 Fax: (505) 334-8170

DISTRICT III

1000 Rio Brazos Rd., Aztec, NM 87412
Phone (505) 334-8176 Fax: (505) 334-8170

DISTRICT IV

1220 S. St. Francis Dr., Santa Fe, NM 87505
Phone (505) 476-3400 Fax: (505) 476-3402State of New Mexico
Energy, Minerals and Natural Resources DepartmentForm C-102
Revised August 1, 2011Submit one copy to appropriate
District Office

OIL CONSERVATION DIVISION

1220 South St. Francis Dr.
Santa Fe, New Mexico 87505

WELL LOCATION AND ACREAGE DEDICATION PLAT

☐ AMENDED REPORT

API Number 30025 41216	Pool Code 43329	Pool Name MALJAMAR; Grayburg-San Andres
Property Code 309534	Property Name CAPROCK MALJAMAR UNIT	Well Number 600
OGRID No. 269324	Operator Name LINN OPERATING, INC.	Elevation 4098'

Surface Location

UL or lot No.	Section	Township	Range	Lot Idn	Feet from the	North/South line	Feet from the	East/West line	County
0	13	17 S	32 E		89	SOUTH	1335	EAST	LEA

Bottom Hole Location If Different From Surface

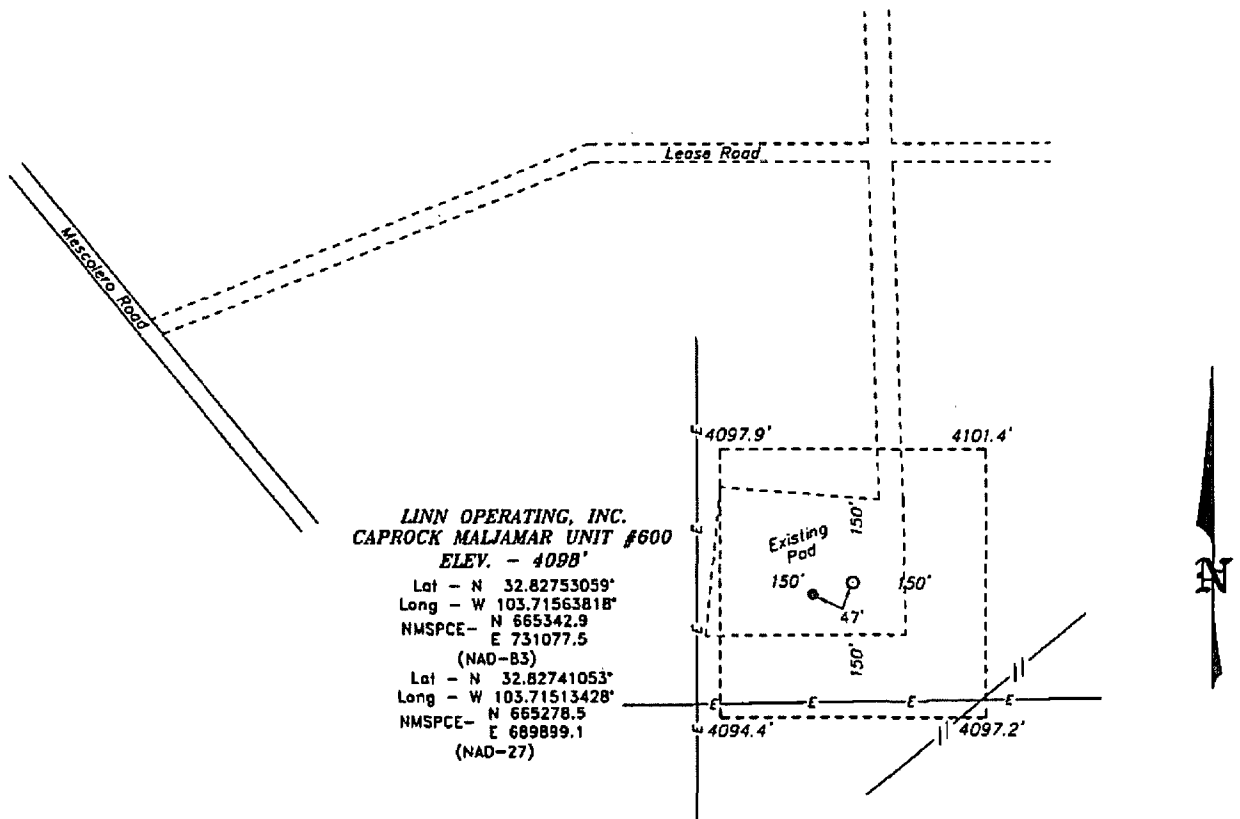
UL or lot No.	Section	Township	Range	Lot Idn	Feet from the	North/South line	Feet from the	East/West line	County

Dedicated Acres 40	Joint or Infill	Consolidation Code	Order No.
------------------------------	-----------------	--------------------	-----------

NO ALLOWABLE WILL BE ASSIGNED TO THIS COMPLETION UNTIL ALL INTERESTS HAVE BEEN CONSOLIDATED
OR A NON-STANDARD UNIT HAS BEEN APPROVED BY THE DIVISION

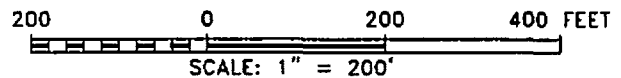
N 560078.297 E 743071.383 (NAD-83)	N 660103.490 E 745706.465 (NAD-83)	N 660128.293 E 748342.884 (NAD-83)	OPERATOR CERTIFICATION I hereby certify that the information contained herein is true and complete to the best of my knowledge and belief, and that this organization either owns a working interest or unleased mineral interest in the land including the proposed bottom hole location or has a right to drill this well at this location pursuant to a contract with an owner of such a mineral or working interest, or to a voluntary pooling agreement or a compulsory pooling order heretofore entered by the division. <i>Callahan</i> 6/13/2013 Signature _____ Date _____ Printed Name Terry Callahan Email Address tcallahan@linenergy.com Email Address _____	
N 657439.058 E 743089.189 (NAD-83)	SURFACE LOCATION Lat - N 32.82753059° Long - W 103.71563818° NMSPC - E 731077.5 (NAD-83) Lat - N 32.82741053° Long - W 103.71513428° NMSPC - N 665278.5 E 689899.1 (NAD-27)			N 657489.148 E 748363.014 (NAD-83)
N 654803.971 E 743107.393 (NAD-83)	N 654826.737 E 745749.788 (NAD-83)	N 654849.544 E 748392.030 (NAD-83)		SURVEYOR CERTIFICATION I hereby certify that the well location shown on this plat was plotted from field notes of actual surveys made by me or under my supervision and that the same is true and correct to the best of my belief. Date Surveyed MAY 20 2013 Signature _____ Professional Surveyor Certificate No. 7977 BASIN SURVEYS 28295
1335'				

**SECTION 13, TOWNSHIP 17 SOUTH, RANGE 32 EAST, N.M.P.M.,
LEA COUNTY, NEW MEXICO.**



DIRECTIONS TO LOCATION:

FROM THE JUNCTION OF Mescalero Road AND HUMINGBIRD ROAD, GO NORTHWEST ON Mescalero ROAD FOR 1.7 MILE, THEN NORTHEAST ON LEASE ROAD FOR 0.2 MILE, THEN SOUTH ON LEASE ROAD TO THE CAPROCK MALJAMAR UNIT #159 WELL PAD.



LINN OPERATING, INC.

REF: CAPROCK MALJAMAR UNIT #600 / WELL PAD TOPO

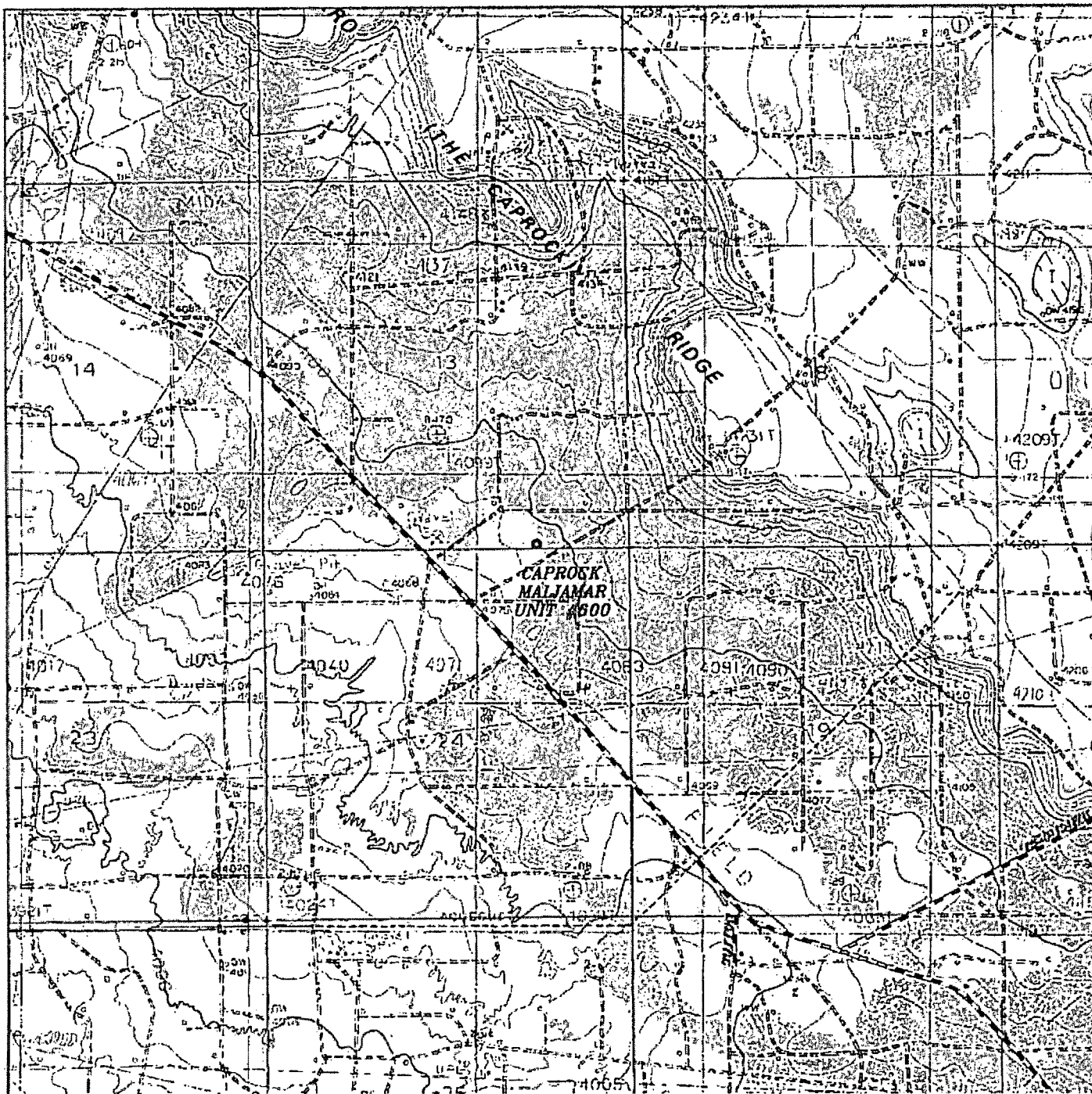
THE CAPROCK MALJAMAR UNIT #600 LOCATED 89' FROM
 THE SOUTH LINE AND 1335' FROM THE EAST LINE OF
 SECTION 13, TOWNSHIP 17 SOUTH, RANGE 32 EAST,
 N.M.P.M., LEA COUNTY, NEW MEXICO.

BASIN SURVEYS P.O. BOX 1786 - HOBBS, NEW MEXICO

W.O. Number: 28295 Drawn By: K. GOAD

Date: 04-01-2013 Disk: KJG - 28295WELL

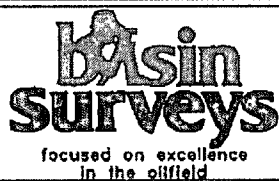
Survey Date: 03-20-2013 Sheet 1 of 1 Sheets



CAPROCK MALJAMAR UNIT #600

Located 89' FSL and 1335' FEL

*Section 13, Township 17 South, Range 32 East,
N.M.P.M., Lea County, New Mexico.*



P.O. Box 1786
1120 N. West County Rd.
Hobbs, New Mexico 88241
(575) 393-7316 - Office
(575) 392-2206 - Fax
basinsurveys.com

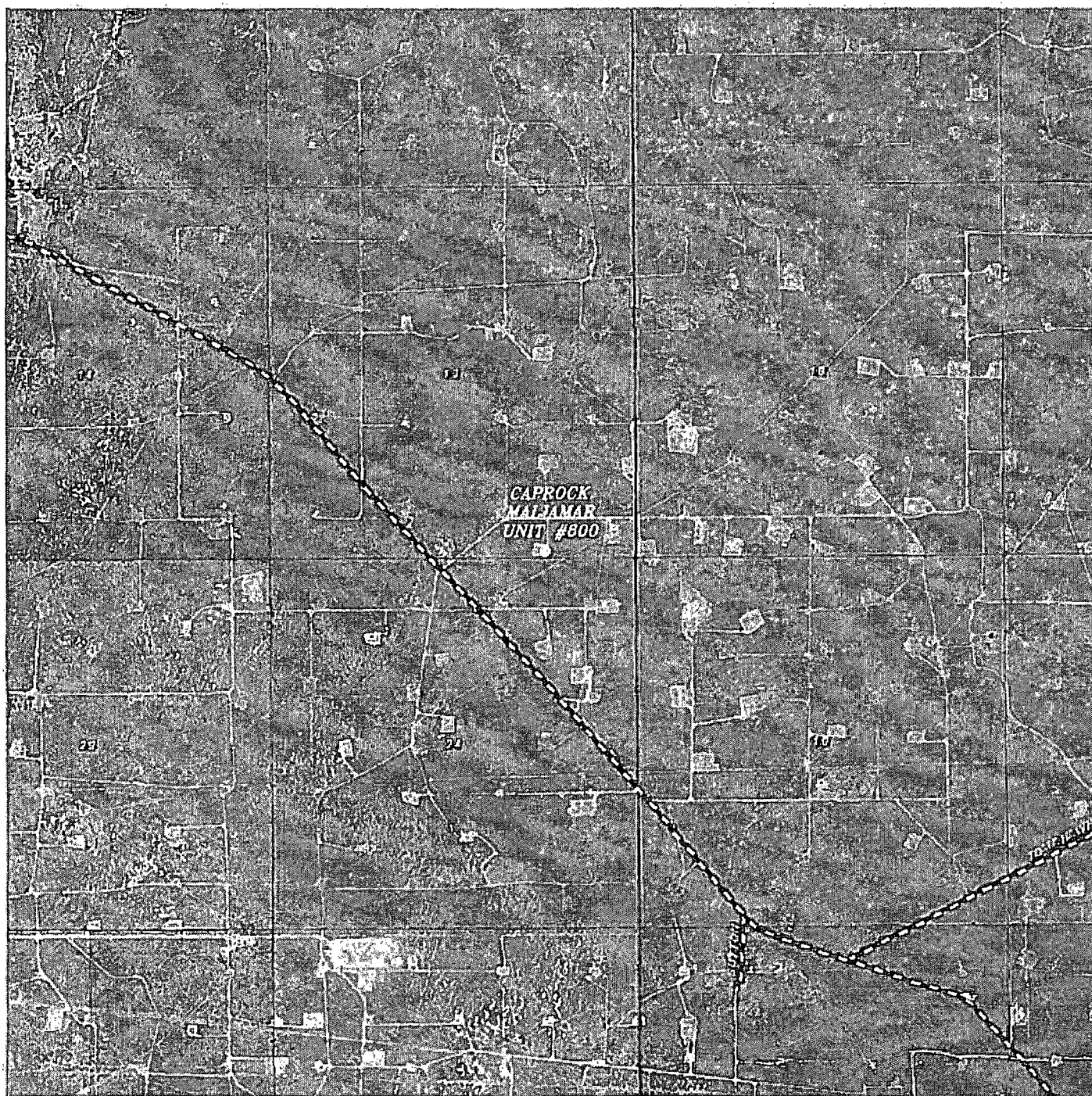
W.O. Number: KJG - 28295

Survey Date: 03-20-2013

Scale: 1" = 2000'

Date: 04-01-2013

**LINN
OPERATING, INC.**



CAPROCK MALJAMAR UNIT #600
 Located 89' FSL and 1335' FEL
 Section 13, Township 17 South, Range 32 East,
 N.M.P.M., Lea County, New Mexico.

basin
surveys
 focused on excellence
 in the oilfield

P.O. Box 1786
 1120 N. West County Rd.
 Hobbs, New Mexico 88241
 (575) 393-7316 - Office
 (575) 392-2206 - Fax
 basinsurveys.com

W.O. Number: KJG - 28295

Scale: 1" = 2000'

YELLOW TINT - USA LAND
 BLUE TINT - STATE LAND
 NATURAL COLOR - FEE LAND

LINN
OPERATING, INC.