

**District I**  
1625 N. French Dr., Hobbs, NM 88240  
Phone: (575) 393-6161 Fax: (575) 393-0720

**District II**  
811 S. First St., Artesia, NM 88210  
Phone: (575) 748-1283 Fax: (575) 748-9720

**District III**  
1000 Rio Brazos Road, Aztec, NM 87410  
Phone: (505) 334-6178 Fax: (505) 334-6170

**District IV**  
1220 S. St. Francis Dr., Santa Fe, NM 87505  
Phone: (505) 476-3460 Fax: (505) 476-3462

**State of New Mexico**  
**Energy Minerals and Natural Resources**  
**Oil Conservation Division**  
**1220 South St. Francis Dr.**  
**Santa Fe, NM 87505**

Form C-101  
Revised November 14, 2012

**HOBBS OCD**

☐ AMENDED REPORT

**JUN 17 2013**

**RECEIVED**

**APPLICATION FOR PERMIT TO DRILL, RE-ENTER, DEEPEN, PLUGBACK, OR ADD A ZONE**

<sup>1</sup> Operator Name and Address <b>LINN Operating, Inc.</b> <b>600 Travis, Suite 5100</b> <b>Houston, Texas 77002</b>		<sup>2</sup> OGRID Number <b>269324</b>
		<sup>3</sup> API Number <b>30025-41223</b>
<sup>4</sup> Property Code <b>309534</b>	<sup>5</sup> Property Name <b>CAPROCK MALJAMAR UNIT</b>	
		<sup>6</sup> Well No. <b>607</b>

**7. Surface Location**

UL - Lot	Section	Township	Range	Lot Idn	Feet from	N/S Line	Feet From	E/W Line	County
H	20	17 S	33 E		2422	North	105	East	Lea

**8. Proposed Bottom Hole Location**

UL - Lot	Section	Township	Range	Lot Idn	Feet from	N/S Line	Feet From	E/W Line	County
H	20	17 S	33 E		2422	North	105	East	Lea

**9. Pool Information**

<sup>10</sup> Pool Name <b>Maljamar; Grayburg-San Andres</b>	<sup>11</sup> Pool Code <b>43329</b>
---	---

**Additional Well Information**

<sup>12</sup> Work Type <b>N</b>	<sup>13</sup> Well Type <b>O</b>	<sup>14</sup> Cable/Rotary <b>R</b>	<sup>15</sup> Lease Type <b>S</b>	<sup>16</sup> Ground Level Elevation <b>4192</b>
<sup>17</sup> Multiple <b>N</b>	<sup>18</sup> Proposed Depth <b>5500</b>	<sup>19</sup> Formation <b>San Andres</b>	<sup>20</sup> Contractor <b>TBD</b>	<sup>21</sup> Spud Date <b>9/1/2013</b>
<sup>22</sup> Depth to Ground water <b>1425'</b>		<sup>23</sup> Distance from nearest fresh water well <b>2073'</b>		<sup>24</sup> Distance to nearest surface water <b>1293'</b>

**21. Proposed Casing and Cement Program**

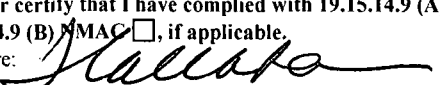

Type	Hole Size	Casing Size	Casing Weight/ft	Setting Depth	Sacks of Cement	Estimated TOC
Surface	12 1/4	8 5/8	24.00# J55-STC	1450'	744	Surface
Production	7 7/8	5 1/2	15.50# J55-LTD	5500'	755	Surface

**Casing/Cement Program: Additional Comments**

<del>Permit Expires 2 Years From Approval</del> <del>Date Unless Drilling Under</del>
--

**22. Proposed Blowout Prevention Program**

Type	Working Pressure	Test Pressure	Manufacturer
Double	2000 PSI	3000 PSI	Cameron

<sup>23</sup> I hereby certify that the information given above is true and complete to the best of my knowledge and belief. I further certify that I have complied with 19.15.14.9 (A) NMAC <input type="checkbox"/> and/or 19.15.14.9 (B) NMAC <input type="checkbox"/> if applicable. Signature: 		<b>OIL CONSERVATION DIVISION</b>	
Printed name: <b>Terry Callahan</b>		Approved By: 	
Title: <b>Regulatory Compliance Specialist III</b>		Title: <b>Petroleum Engineer</b>	
E-mail Address: <b>tcallahan@linnenergy.com</b>		Approved Date: <b>06/18/13</b> Expiration Date: <b>06/18/15</b>	
Date: <b>6/12/2013</b>	Phone: <b>281-840-4272</b>	Conditions of Approval Attached	

HOBBS OCD

## DISTRICT I

1625 N. French Dr., Hobbs, NM 88240  
Phone (575) 393-8161 Fax: (575) 393-8720

## DISTRICT II

1301 W. Grand Avenue, Artesia, NM 88210  
Phone (505) 748-1283 Fax: (505) 748-0780

## DISTRICT III

1000 Rio Brazos Rd., Aztec, NM 87410  
Phone (505) 334-8178 Fax: (505) 334-8170

## DISTRICT IV

1220 S. St. Francis Dr., Santa Fe, NM 87505  
Phone (505) 470-3400 Fax: (505) 470-3482

JUN 17 2013

State of New Mexico  
Energy, Minerals and Natural Resources DepartmentForm C-102  
Revised August 1, 2011Submit one copy to appropriate  
District OfficeOIL CONSERVATION DIVISION  
1220 South St. Francis Dr.  
Santa Fe, New Mexico 87505

## WELL LOCATION AND ACREAGE DEDICATION PLAT

☐ AMENDED REPORT

API Number <b>30025-41223</b>	Pool Code <b>43329</b>	Pool Name <b>maljamar; Grayburg-San Andres</b>
Property Code <b>309534</b>	Property Name <b>CAPROCK MALJAMAR UNIT</b>	Well Number <b>607</b>
OCRID No. <b>269324</b>	Operator Name <b>LINN OPERATING, INC.</b>	Elevation <b>4192'</b>

## Surface Location

UL or lot No.	Section	Township	Range	Lot Idn	Feet from the	North/South line	Feet from the	East/West line	County
H	20	17 S	33 E		2422	NORTH	105	EAST	LEA

## Bottom Hole Location If Different From Surface

UL or lot No.	Section	Township	Range	Lot Idn	Feet from the	North/South line	Feet from the	East/West line	County
Dedicated Acres <b>40</b>	Joint or Infill	Consolidation Code	Order No.						

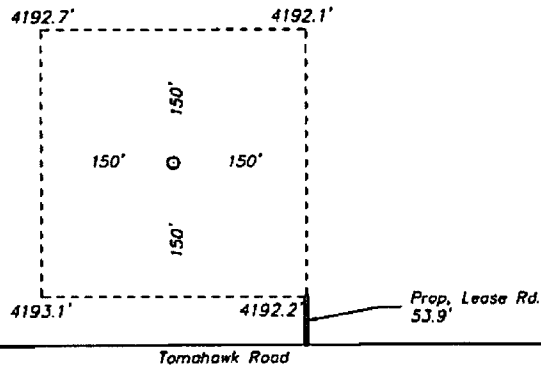
NO ALLOWABLE WILL BE ASSIGNED TO THIS COMPLETION UNTIL ALL INTERESTS HAVE BEEN CONSOLIDATED  
OR A NON-STANDARD UNIT HAS BEEN APPROVED BY THE DIVISION

N 665309.245 E 737757.530 (NAD-83)		N 685358.025 E 743034.713 (NAD-83)	<b>OPERATOR CERTIFICATION</b> I hereby certify that the information contained herein is true and complete to the best of my knowledge and belief, and that this organization either owns a working interest or unleased mineral interest in the land including the proposed bottom hole location or has a right to drill this well at this location pursuant to a contract with an owner of such a mineral or working interest, or to a voluntary pooling agreement or a compulsory pooling order heretofore entered by the division. Signature <u>Terry Callahan</u> Date <u>6/12/2013</u> Printed Name <u>Terry Callahan</u> Email Address <u>tcallahan@linnenergy.com</u>
	<b>SURFACE LOCATION</b> Lat - N 32.82071784° Long - W 103.67705007° NMSPCE - N 562935.7 E 742946.3 (NAD-83) Lat - N 32.82059692° Long - W 103.67654740° NMSPCE - N 562871.1 E 701767.9 (NAD-27)		
N 660026.284 E 737781.127 (NAD-83)		N 660078.297 E 743071.383 (NAD-83)	<b>SURVEYOR CERTIFICATION</b> I hereby certify that the well location shown on this plat was plotted from field notes of actual surveys made by me or under my supervision and that the same is true and correct to the best of my belief. Date <u>June 12, 2013</u> Signature <u>[Signature]</u> Professional Surveyor Certificate No. <u>28301</u> Jones 7977 BASIN SURVEYS 28301

**SECTION 20, TOWNSHIP 17 SOUTH, RANGE 33 EAST, N.M.P.M.,  
LEA COUNTY, NEW MEXICO.**

**LINN ENERGY, LLC  
CAPROCK MALJAMAR UNIT #607  
ELEV. - 4192'**

Lat - N 32.82071764°  
Long - W 103.67705007°  
NMSPCE - N 662935.7  
E 742946.3  
(NAD-83)  
Lat - N 32.82059692°  
Long - W 103.67654740°  
NMSPCE - N 662871.1  
E 701767.9  
(NAD-27)



200 0 200 400 FEET  
SCALE: 1" = 200'

**DIRECTIONS TO LOCATION:**

FROM MESCALERO AND TOMAHAWK ROAD, GO WEST  
ON TOMAHAWK FOR 0.1 MILE TO PROPOSED LEASE  
ROAD.

**BASIN SURVEYS** P.O. BOX 1786 - HOBBS, NEW MEXICO

W.O. Number: 28301 Drawn By: K. GOAD

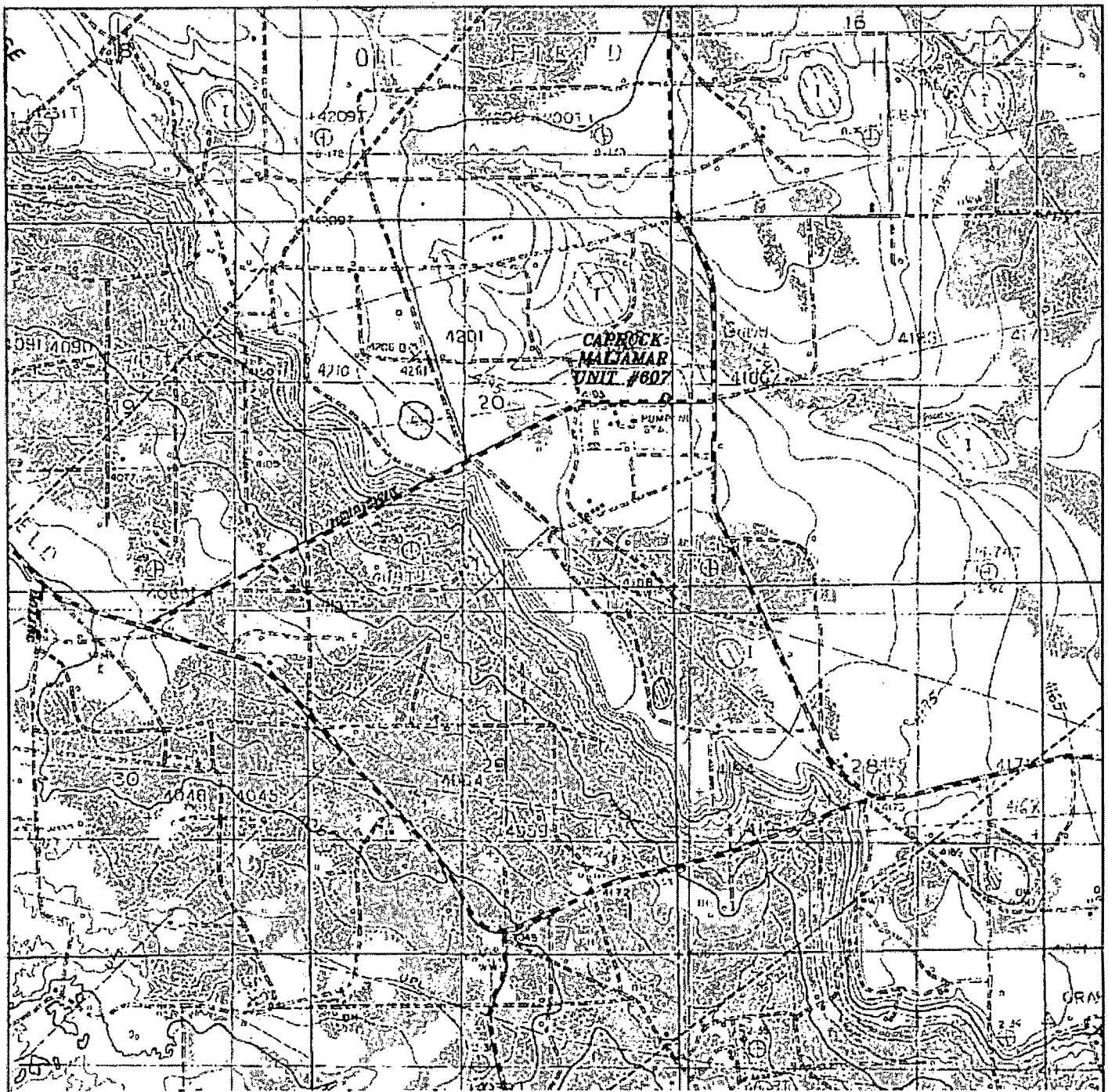
Date: 03-28-2013 Disk: KJG - 28301WELL

**LINN OPERATING, INC.**

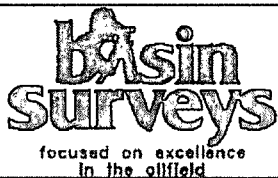
REF: CAPROCK MALJAMAR UNIT #607 / WELL PAD TOPO

THE CAPROCK MALJAMAR UNIT #607 LOCATED 2422' FROM  
THE NORTH LINE AND 105' FROM THE EAST LINE OF  
SECTION 20, TOWNSHIP 17 SOUTH, RANGE 33 EAST,  
N.M.P.M., LEA COUNTY, NEW MEXICO.

Survey Date: 03-22-2013 Sheet 1 of 1 Sheets



**CAPROCK MALJAMAR UNIT #607**  
*Located 2422' FNL and 105' FEL*  
*Section 20, Township 17 South, Range 33 East,*  
*N.M.P.M., Lea County, New Mexico.*



P.O. Box 1786  
 1120 N. West County Rd.  
 Hobbs, New Mexico 88241  
 (575) 393-7316 - Office  
 (575) 392-2206 - Fax  
 basinsurveys.com

W.O. Number: KJG - 28301

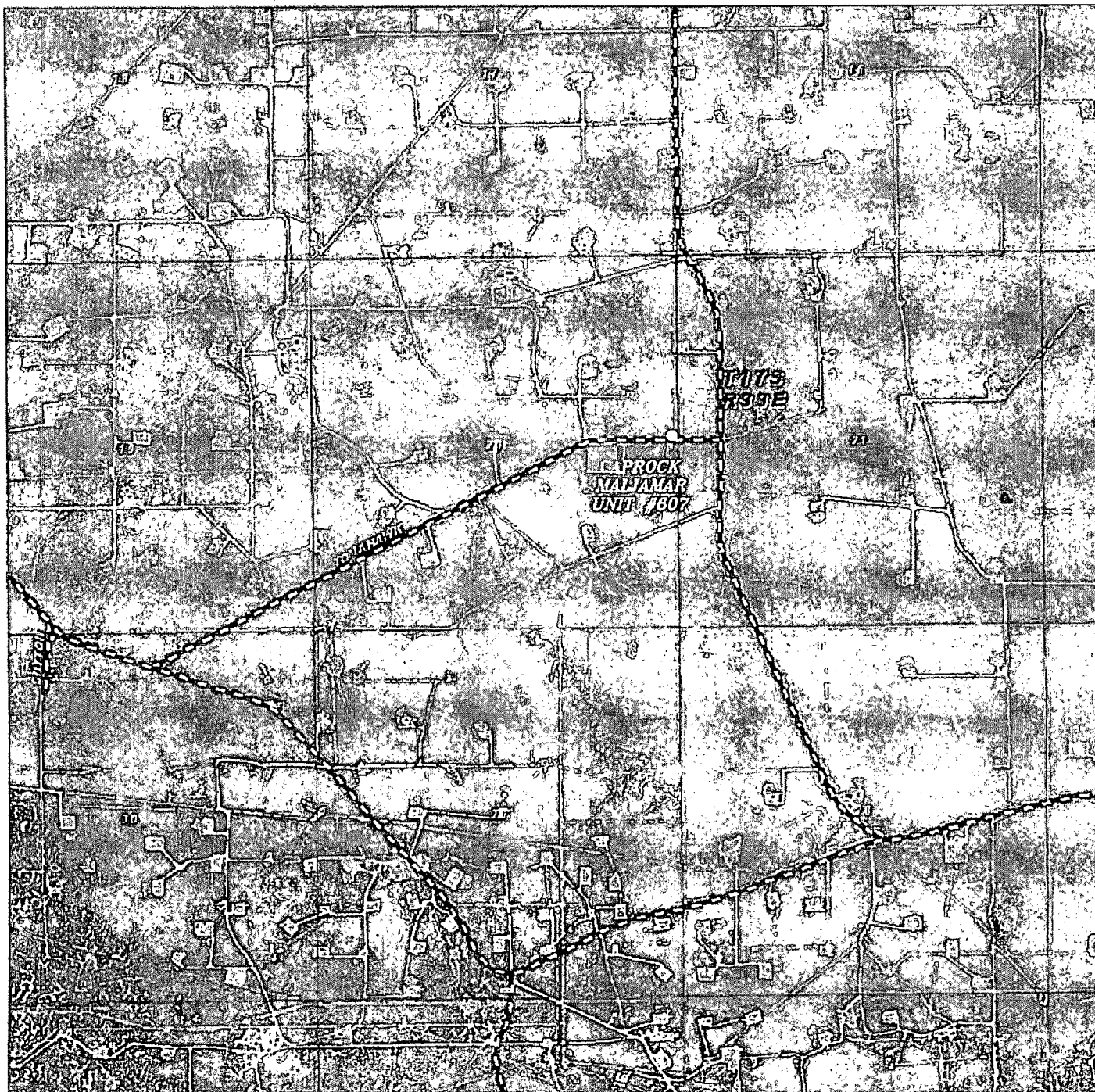
Survey Date: 03-22-2013

Scale: 1" = 2000'

Date: 03-28-2013

**LINN**  
**OPERATING, INC.**





**CAPROCK MALJAMAR UNIT #607**  
 Located 2422' FNL and 105' FEL  
 Section 20, Township 17 South, Range 33 East,  
 N.M.P.M., Lea County, New Mexico.

**basin**  
**surveys**  
 focused on excellence  
 in the oilfield

P.O. Box 1786  
 1120 N. West County Rd.  
 Hobbs, New Mexico 88241  
 (575) 393-7316 - Office  
 (575) 392-2206 - Fax  
 basin-surveys.com

W.O. Number: KJG - 28301

Scale: 1" = 2000'

YELLOW TINT - USA LAND  
 BLUE TINT - STATE LAND  
 NATURAL COLOR - FEE LAND

**LINN**  
**OPERATING, INC.**