

District I - (575) 393-6161

1625 N. French Dr., Hobbs, NM 88240

District II - (575) 748-1283

811 S. First St., Artesia, NM 88210

District III - (505) 334-6178

1000 Rio Brazos Rd., Aztec, NM 87410

District IV - (505) 476-3460

1220 S. St. Francis Dr., Santa Fe, NM
87505

Energy, Minerals and Natural Resources

OIL CONSERVATION DIVISION

1220 South St. Francis Dr.

Santa Fe, NM 87505

Revised August 1, 2011

WELL API NO.

30-005-29162

5. Indicate Type of Lease

STATE ☒ FEE ☐

6. State Oil & Gas Lease No.

SUNDRY NOTICES AND REPORTS ON WELLS

(DO NOT USE THIS FORM FOR PROPOSALS TO DRILL OR TO DEEPEN OR PLUG BACK TO A
DIFFERENT RESERVOIR. USE "APPLICATION FOR PERMIT" (FORM C-101) FOR SUCH
PROPOSALS.)

1. Type of Well: Oil Well ☐ Gas Well ☐ Other Injection ☒

2. Name of Operator
Celero Energy II, LP

3. Address of Operator
400 W. Illinois, Ste. 1601
Midland, TX 79701

4. Well Location

Unit Letter C : 1309 feet from the North line and 2629 feet from the West line
Section 36 Township 13S Range 31E NMPM County Chaves

11. Elevation (Show whether DR, RKB, RT, GR, etc.)

12. Check Appropriate Box to Indicate Nature of Notice, Report or Other Data

NOTICE OF INTENTION TO:

PERFORM REMEDIAL WORK ☐ PLUG AND ABANDON ☐
TEMPORARILY ABANDON ☐ CHANGE PLANS ☐
PULL OR ALTER CASING ☐ MULTIPLE COMPL ☐
DOWNHOLE COMMINGLE ☐

OTHER: ☐

SUBSEQUENT REPORT OF:

REMEDIAL WORK ☒ ALTERING CASING ☐
COMMENCE DRILLING OPNS. ☐ P AND A ☐
CASING/CEMENT JOB ☐

OTHER: ☐

13. Describe proposed or completed operations. (Clearly state all pertinent details, and give pertinent dates, including estimated date
of starting any proposed work). SEE RULE 19.15.7.14 NMAC. For Multiple Completions: Attach wellbore diagram of
proposed completion or recompletion.

5/21/13 - Pumped 40 BFW down tbg into perfs at 1.5 BPM at 1600 psi. ISIP = 1350 psi. RIH with 1.50 blanking plug & attempt to
set and pressure up on. Plug would not set. POH. RIH with 1.49 GR. Set down at 2990'. POH. Ran in a 1 3/8" GR, set down at 2990',
beat down but did not make any hole.

5/24/13 - Release on-off tool from pkr. Circulate hole with 10 ppg PW. Latched back onto pkr, release same. TOH, LD 93 jts of 2
3/8" O.D. 4.7# 8rd EUE J-55 regular IPC tbg with 5 1/2" AS1-X nickel plated pkr with 1.50 "F" profile nipple. Found part of a check
valve in pkr profile nipple. PU new 5 1/2" nickel plated AS1-X pkr with 1.50 "F" profile nipple. Ran on 92 jts (2992.57') of 2 3/8"
O.D. 4.7# 8rd EUE J-55 seal lube IPC tbg. Ran and set pkr from 3002' to 3010'. Pre-test tbg-csg annulus to 500# and held 15 mins.
NDBOP & NUWH (7 1/16", 3K, slip type flange with 2 1/16", 5K, tbg valve with stainless steel injection connections). Left 18 pts of
tension on pkr. Ran MIT. Tested 31 mins with starting pressure of 580# & ending pressure of 580#. Copy of chart is attached.
Connect to injection.

Spud Date:

Rig Release Date:

I hereby certify that the information above is true and complete to the best of my knowledge and belief.

SIGNATURE

Lisa Hunt

TITLE Regulatory Analyst

DATE 05/31/2013

Type or print name Lisa Hunt

E-mail address: lhunt@celeroenergy.com

PHONE: (432)686-1883

For State Use Only

APPROVED BY:

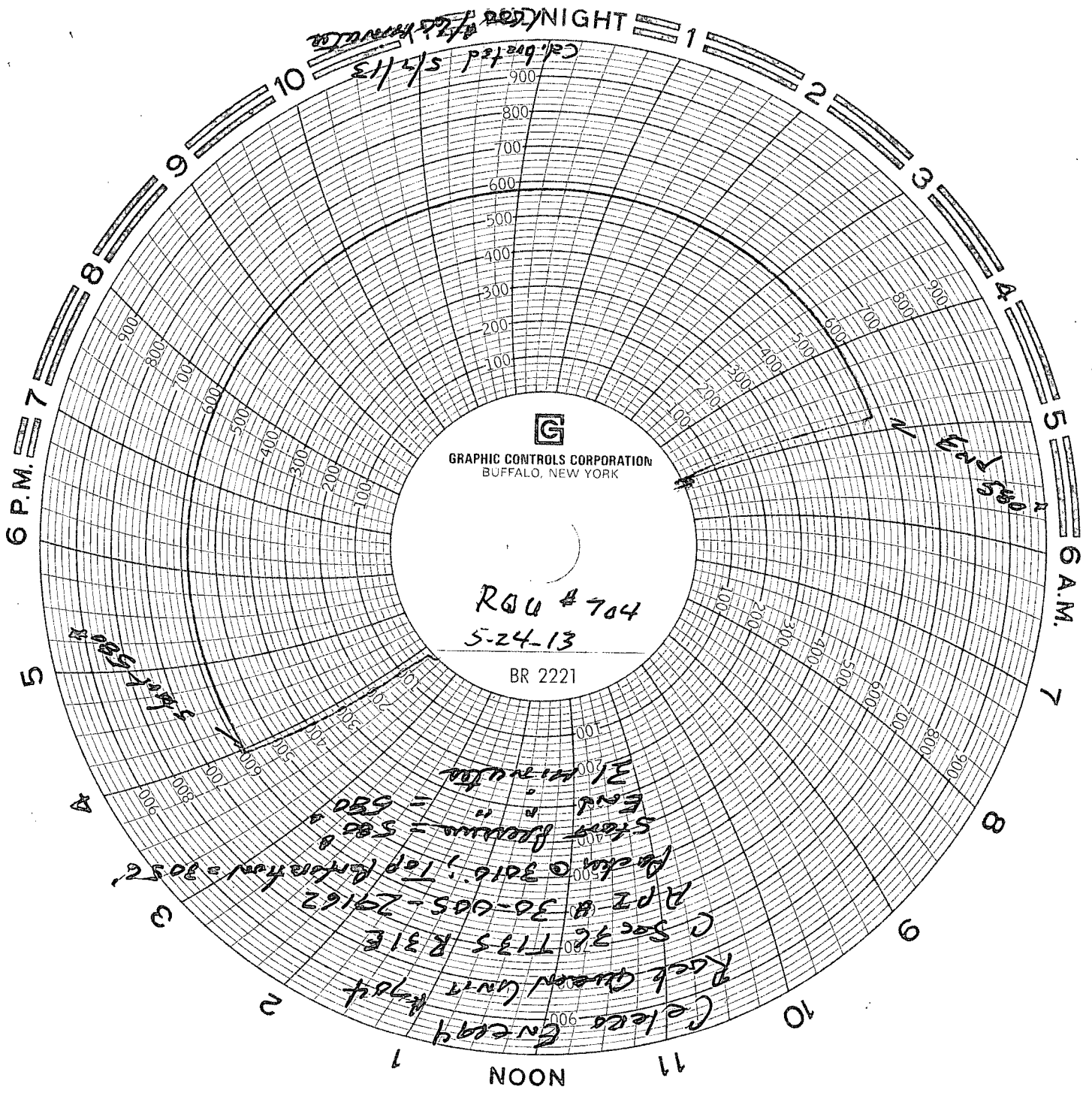
[Signature]

TITLE

Dist. MGR

DATE 6-10-2013

Conditions of Approval (if any):



GRAPHIC CONTROLS CORPORATION
BUFFALO, NEW YORK

RQU # 704
5-24-13

BR 2221

CELECO ENERGY
Rock Queen Unit #704
C Sec 32 T135 R31E
APZ # 30-005-29162
Rock # 3016; Top Containment = 3056
Start Pressure = 580
End Pressure = 580
El. Minimum