

District I  
1625 N. French Dr., Hobbs, NM 88240  
Phone: (575) 393-6161 Fax: (575) 393-0720  
District II  
811 S. First St., Artesia, NM 88210  
Phone: (575) 748-1283 Fax: (575) 748-9720  
District III  
1000 Rio Brazos Road, Aztec, NM 87410  
Phone: (505) 334-6178 Fax: (505) 334-6170  
District IV  
1220 S. St. Francis Dr., Santa Fe, NM 87505  
Phone: (505) 476-3460 Fax: (505) 476-3462

State of New Mexico  
Energy, Minerals & Natural Resources Department  
**HOBBS OIL CONSERVATION DIVISION**  
1220 South St. Francis Dr.  
Santa Fe, NM 87505

Form C-102  
Revised August 1, 2011  
Submit one copy to appropriate  
District Office  
☐ AMENDED REPORT

JUN 13 2013

**RECEIVED**  
**WELL LOCATION AND ACREAGE DEDICATION PLAT**

<sup>1</sup> API Number <b>30-025-37295</b>	<sup>2</sup> Pool Code <b>513D</b>	<sup>3</sup> Pool Name <b>Bell Lake Bone Spring</b>
<sup>4</sup> Property Code <b>39925</b>	<sup>5</sup> Property Name <b>STRATOCASTER 20 FED</b>	
<sup>7</sup> OGRID No. <b>270329</b>	<sup>8</sup> Operator Name <b>ENDURANCE RESOURCES, LLC</b>	
		<sup>6</sup> Well Number <b>1H</b>
		<sup>9</sup> Elevation <b>3562.5</b>

<sup>10</sup> Surface Location

UL or lot no.	Section	Township	Range	Lot Idn	Feet from the	North/South line	Feet from the	East/West line	County
<b>M</b>	<b>20</b>	<b>23 S</b>	<b>34 E</b>		<b>660</b>	<b>SOUTH</b>	<b>660</b>	<b>WEST</b>	<b>LEA</b>

<sup>11</sup> Bottom Hole Location If Different From Surface

UL or lot no.	Section	Township	Range	Lot Idn	Feet from the	North/South line	Feet from the	East/West line	County
<b>D</b>	<b>20</b>	<b>23 S</b>	<b>34 E</b>		<b>330</b>	<b>NORTH</b>	<b>660</b>	<b>WEST</b>	<b>LEA</b>

<sup>12</sup> Dedicated Acres <b>160</b>	<sup>13</sup> Joint or Infill	<sup>14</sup> Consolidation Code	<sup>15</sup> Order No.
---	-------------------------------	----------------------------------	-------------------------

No allowable will be assigned to this completion until all interests have been consolidated or a non-standard unit has been approved by the division.

<p>N89°31'24"E 2641.41 FT</p> <p>NW CORNER SEC. 20 LAT. = 32.2973633°N LONG. = 103.5006501°W NMSP EAST (FT) N = 472912.33 E = 798626.73</p> <p>660'</p> <p>330'</p> <p>BOTTOM OF HOLE</p> <p>BOTTOM OF HOLE LAT. = 32.2964594°N LONG. = 103.4985105°W NMSP EAST (FT) N = 472588.64 E = 799290.42</p> <p>W Q CORNER SEC. 20 LAT. = 32.2901082°N LONG. = 103.5006368°W NMSP EAST (FT) N = 470272.94 E = 798651.36</p> <p>500°30'48"E 2640.77 FT</p>		<p>N89°31'12"E 2640.97 FT</p> <p>N Q CORNER SEC. 20 LAT. = 32.2973670°N LONG. = 103.4921037°W NMSP EAST (FT) N = 472934.30 E = 801267.56</p> <p>NOTE: LATITUDE AND LONGITUDE COORDINATES ARE SHOWN USING THE NORTH AMERICAN DATUM OF 1983 (NAD83). LISTED NEW MEXICO STATE PLANE EAST COORDINATES ARE GRID (NAD83), BASIS OF BEARING AND DISTANCES USED ARE NEW MEXICO STATE PLANE, EAST COORDINATES MODIFIED TO THE SURFACE.</p> <p>NE CORNER SEC. 20 LAT. = 32.2973706°N LONG. = 103.4835587°W NMSP EAST (FT) N = 472956.42 E = 803907.94</p> <p>500°30'48"E 2640.77 FT</p>	
<p>500°32'04"W 2639.99 FT</p> <p>STRATOCASTER "20" FED #1H ELEV. = 3562.5' LAT. = 32.2844692°N (NAD83) LONG. = 103.4984889°W NMSP EAST (FT) N = 468299.39 E = 799330.50</p> <p>500°30'48"E 2640.77 FT</p>		<p>E Q CORNER SEC. 20 LAT. = 32.2901133°N LONG. = 103.4835498°W NMSP EAST (FT) N = 470316.25 E = 803931.60</p> <p>500°30'45"E 2640.27 FT</p>	
<p>500°32'11"W 2638.87 FT</p> <p>SURFACE LOCATION</p> <p>SW CORNER SEC. 20 LAT. = 32.2828561°N LONG. = 103.5006231°W NMSP EAST (FT) N = 467634.68 E = 798676.05</p> <p>660'</p> <p>109'</p> <p>589°34'25"W 2641.13 FT</p>		<p>S Q CORNER SEC. 20 LAT. = 32.2828535°N LONG. = 103.4920789°W NMSP EAST (FT) N = 467654.33 E = 801316.62</p> <p>SE CORNER SEC. 20 LAT. = 32.2828575°N LONG. = 103.4835411°W NMSP EAST (FT) N = 467676.57 E = 803955.21</p> <p>589°31'02"W 2639.18 FT</p>	

**<sup>17</sup> OPERATOR CERTIFICATION**

I hereby certify that the information contained herein is true and complete to the best of my knowledge and belief, and that this organization either owns a working interest or unleased mineral interest in the land including the proposed bottom hole location or has a right to drill this well at this location pursuant to a contract with an owner of such a mineral or working interest, or to a voluntary pooling agreement or a compulsory pooling order heretofore entered by the division.

Signature: Kale Jackson Date: 4/18/13

Printed Name: Kale Jackson

E-mail Address: Kale@enduranceresourcesllc.com

**<sup>18</sup> SURVEYOR CERTIFICATION**

I hereby certify that the well location shown on this plat was plotted from field notes of actual surveys made by me or under my supervision, and that the same is true and correct to the best of my belief.

APRIL 16, 2013

Date of Survey: APRIL 16, 2013

Signature and Seal of Professional Surveyor: [Signature]

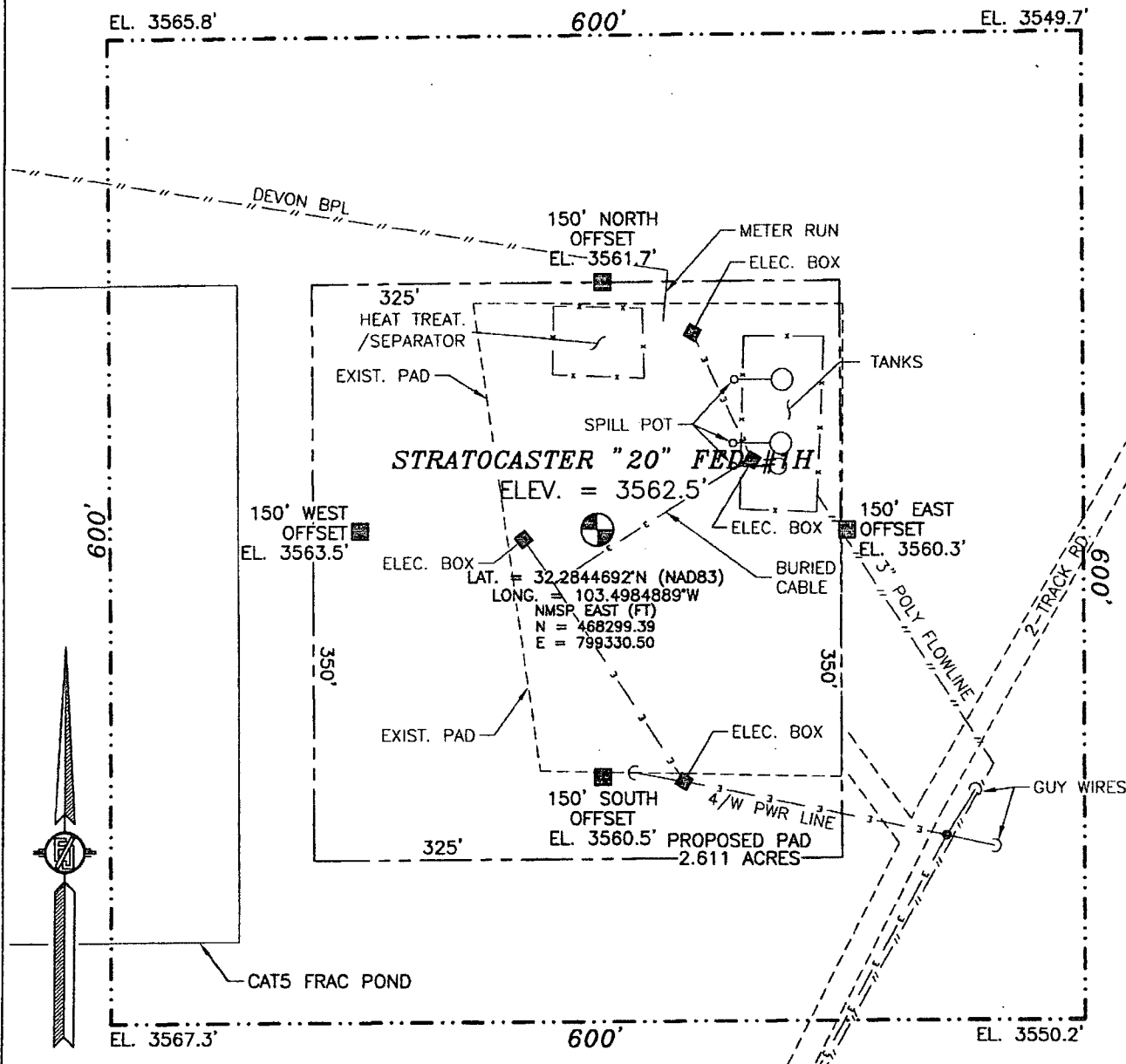
Certificate Number: ST. FILIPINO F. JARAMILLO, PLS 12797

SURVEY NO. 1757A

JUN 26 2013

SECTION 20, TOWNSHIP 23 SOUTH, RANGE 34 EAST, N.M.P.M.  
LEA COUNTY, STATE OF NEW MEXICO

NOTE: LATITUDE AND LONGITUDE COORDINATES ARE SHOWN USING THE NORTH AMERICAN DATUM OF 1983 (NAD83). LISTED NEW MEXICO STATE PLANE EAST COORDINATES ARE GRID (NAD83). BASIS OF BEARING AND DISTANCES USED ARE NEW MEXICO STATE PLANE EAST COORDINATES MODIFIED TO THE SURFACE



010 50 100 200

SCALE 1" = 100'

DIRECTIONS TO LOCATION

FROM THE INTERSECTION OF STATE HIGHWAY 128 AND CR 21 (DELAWARE BASIN) GO NORTH ON CR 21 FOR APPROX. 5.1 MILES. TURN RIGHT (EAST) ON CALICHE LEASE ROAD (SOUTH OF RADIO TOWER) GO SOUTHEAST APPROX. 0.75 OF A MILE. CONTINUE NORTHEAST APPROX. 0.1 OF A MILE TO LOCATION.

ENDURANCE RESOURCES, LLC  
**STRATOCASTER "20" FED #1H**  
LOCATED 660 FT. FROM THE SOUTH LINE  
AND 660 FT. FROM THE WEST LINE OF  
SECTION 20, TOWNSHIP 23 SOUTH,  
RANGE 34 EAST, N.M.P.M.  
LEA COUNTY, STATE OF NEW MEXICO

APRIL 16, 2013

SURVEY NO. 1757A

MADRON SURVEYING, INC. 301 SOUTH CANAL (575) 234-3341

CARLSBAD, NEW MEXICO

Drill Hole

Oil Well

Gravel Pit

Well

STRATOCASTER "20"

FED #1H

3515

3483

3487

3539

3550

3564

3576

3517

3513

3612

3610

3627

3548

3500

3450

3400

3350

3300

3250

3200

3150

3100

3050

3000

2950

2900

2850

2800

2750

2700

2650

2600

2550

2500

2450

2400

2350

2300

2250

2200

2150

2100

2050

2000

1950

1900

1850

1800

1750

1700

1650

1600

1550

1500

1450

1400

1350

1300

1250

1200

1150

1100

1050

1000

950

900

850

800

750

700

650

600

550

500

450

400

350

300

250

200

150

100

50

0

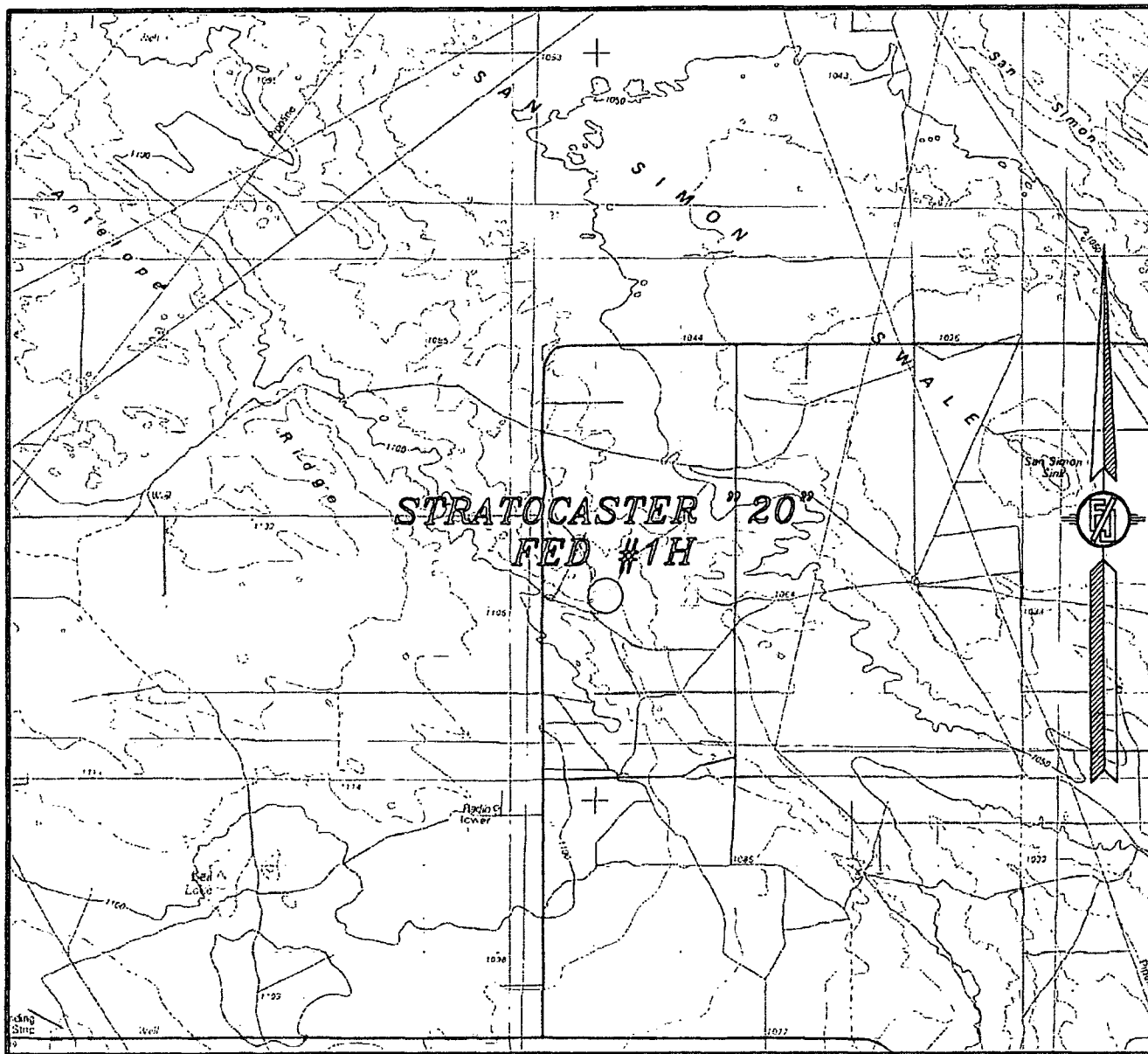
North Arrow

**NOT TO SCALE**

*APRIL 16, 2013*

MADRON SURVEYING, INC. 301 SOUTH CANAL CARLSBAD, NEW MEXICO  
(575) 234-3341

SECTION 20, TOWNSHIP 23 SOUTH, RANGE 34 EAST, N.M.P.M.  
LEA COUNTY, STATE OF NEW MEXICO  
VICINITY MAP



NOT TO SCALE

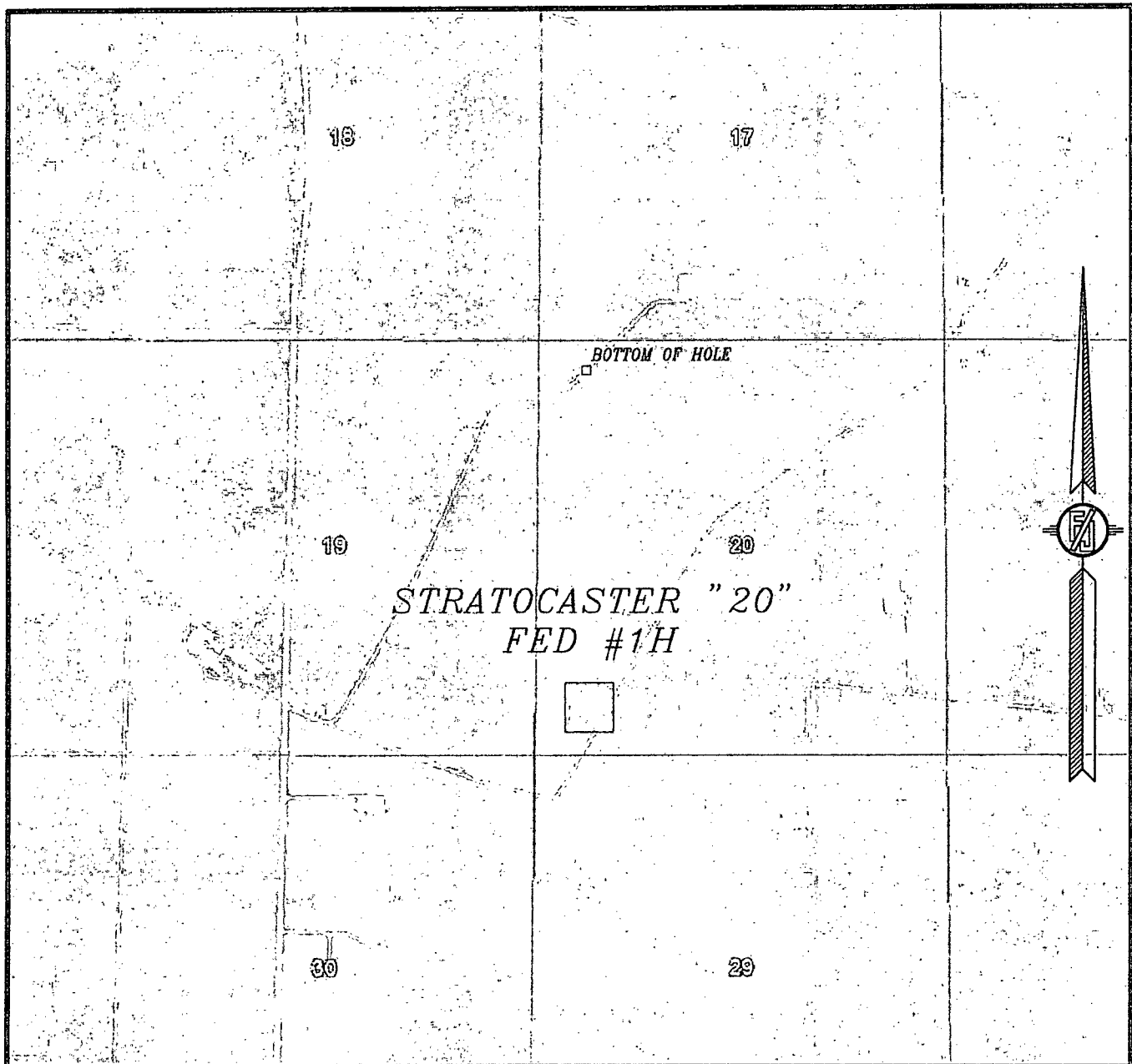
**ENDURANCE RESOURCES, LLC**  
**STRATOCASTER "20" FED #1H**  
**LOCATED 660 FT. FROM THE SOUTH LINE**  
**AND 660 FT. FROM THE WEST LINE OF**  
**SECTION 20, TOWNSHIP 23 SOUTH,**  
**RANGE 34 EAST, N.M.P.M.**  
**LEA COUNTY, STATE OF NEW MEXICO**

APRIL 16, 2013

*SURVEY NO. 1757A*

**MADRON SURVEYING, INC.** 301 SOUTH CANAL CARLSBAD, NEW MEXICO  
(575) 234-3341

SECTION 20, TOWNSHIP 23 SOUTH, RANGE 34 EAST, N.M.P.M.  
LEA COUNTY, STATE OF NEW MEXICO  
**AERIAL PHOTO**



NOT TO SCALE  
AERIAL PHOTO:  
GOOGLE EARTH  
MARCH 2012

**ENDURANCE RESOURCES, LLC**  
**STRATOCASTER "20" FED #1H**  
LOCATED 660 FT. FROM THE SOUTH LINE  
AND 660 FT. FROM THE WEST LINE OF  
SECTION 20, TOWNSHIP 23 SOUTH,  
RANGE 34 EAST, N.M.P.M.  
LEA COUNTY, STATE OF NEW MEXICO

APRIL 16, 2013

SURVEY NO. 1757A

MADRON SURVEYING, INC. 301 SOUTH CANAL (575) 234-3341 CARLSBAD, NEW MEXICO