

District I  
1625 N. French Dr., Hobbs, NM 88240  
District II  
1301 W. Grand Avenue, Artesia, NM 88210  
District III  
1000 Rio Brazos Rd., Aztec, NM 87410  
District IV  
1220 S. St. Francis Dr., Santa Fe, NM 87505

State of New Mexico  
Energy, Minerals & Natural Resources Department  
OIL CONSERVATION DIVISION  
1220 South St. Francis Dr.  
Santa Fe, NM 87505

Form C-102  
Revised October 12, 2005  
Submit to Appropriate District Office  
State Lease- 4 Copies  
Fee Lease- 3 Copies

☐ AMENDED REPORT

JUN 17 2013

WELL LOCATION AND ACREAGE DEDICATION PLAT

API Number 30-025-40484	Pool Code 97900	Pool Name Red Hills; Bone Spring Upper Shale
Property Code 4050	Property Name DIAMOND "31" FED. COM	Well Number 2H
OGRID No. 7377	Operator Name EOG RESOURCES, INC.	Elevation 3500.6'

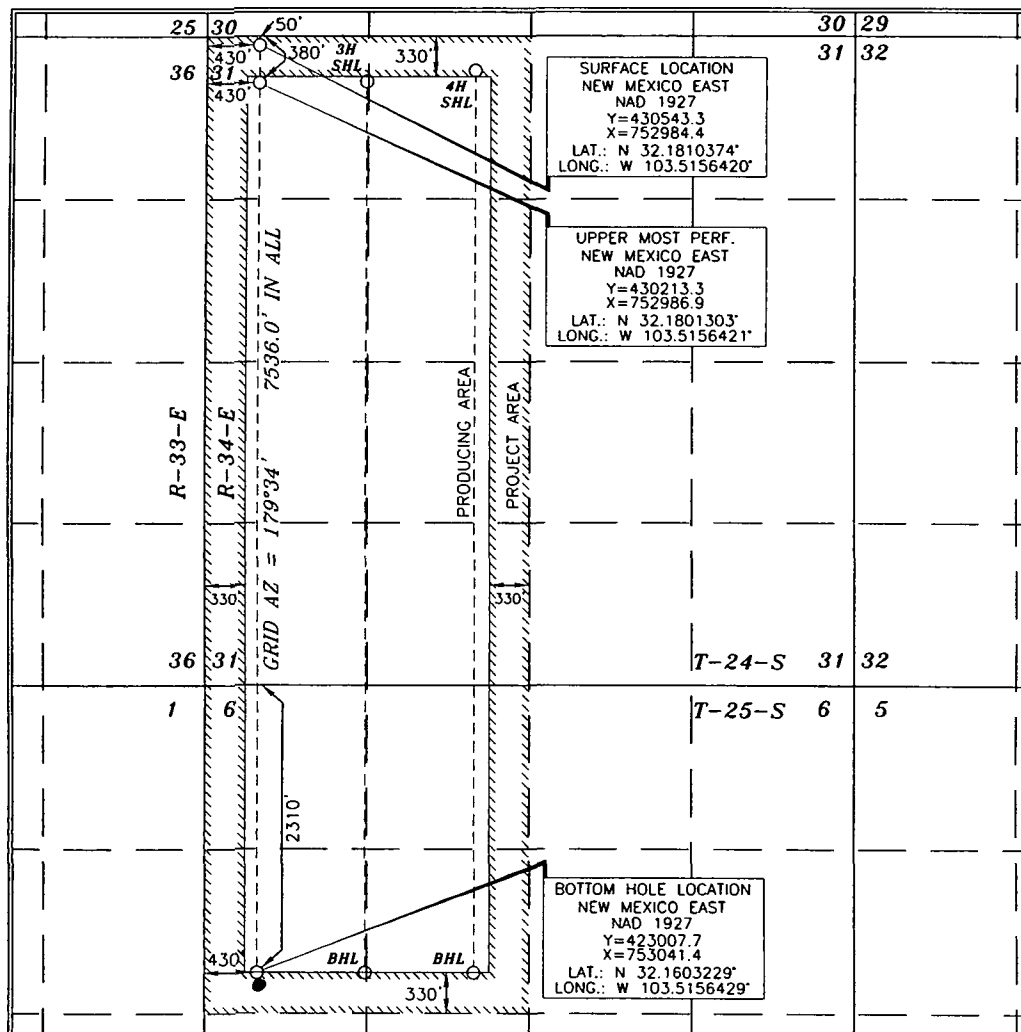
Surface Location

UL or lot no. D	Section 31	Township 24 SOUTH	Range 34 EAST, N.M.P.M.	Lot Idn	Feet from the 50'	North/South line NORTH	Feet from the 430'	East/West line WEST	County LEA
--------------------	---------------	----------------------	----------------------------	---------	----------------------	---------------------------	-----------------------	------------------------	---------------

Bottom Hole Location If Different From Surface

UL or lot no. E	Section 6	Township 25 SOUTH	Range 34 EAST, N.M.P.M.	Lot Idn	Feet from the 2391'	North/South line NORTH	Feet from the 496'	East/West line WEST	County LEA
Dedicated Acres 240	Joint or Infill	Consolidation Code	Order No. 7666						

No allowable will be assigned to this completion until all interests have been consolidated or a non-standard unit has been approved by the division.



OPERATOR CERTIFICATION

I hereby certify that the information contained herein is true and complete to the best of my knowledge and belief, and that this organization either owns a working interest or unleased mineral interest in the land including the proposed bottom hole location or has a right to drill this well at this location pursuant to a contract with an owner of such a mineral or working interest, or to a voluntary pooling agreement or a compulsory pooling order heretofore entered by the division.

*Roger Motley* 10-31-2011  
Signature Date

*Roger Motley*  
Printed Name

SURVEYOR CERTIFICATION

I hereby certify that the well location shown on this plat was plotted from field notes and actual surveys made by me or under my supervision, and that the same is true and correct to the best of my belief.

*Jerry J. Paul* 9/30/2011  
Date of Survey

Signature and Seal of Professional Surveyor

*Jerry J. Paul* 9/30/2011  
Certificate Number 15079

WO# 110919WL-a (KA)

JUL 02 2013