

Submit 1 Copy To Appropriate District Office
District I - (575) 393-6161
1625 N. French Dr., Hobbs, NM 88240
District II - (575) 748-1283
811 S. First St., Artesia, NM 88210
District III - (505) 334-6178
1000 Rio Brazos Rd., Aztec, NM 87410
District IV - (505) 476-3460
1220 S. St. Francis Dr., Santa Fe, NM 87505

State of New Mexico
Energy, Minerals and Natural Resources

Form C-103

Revised August 1, 2011

HOBBS OCD

OIL CONSERVATION DIVISION

1220 South St. Francis Dr.
Santa Fe, NM 87505

JUL 10 2013

NOT RECEIVED

SUNDRY NOTICES AND REPORTS ON WELLS (DO NOT USE THIS FORM FOR PROPOSALS TO DRILL OR TO DEEPEN OR PLUG BACK TO A DIFFERENT RESERVOIR. USE "APPLICATION FOR PERMIT" (FORM C-101) FOR SUCH PROPOSALS.)		WELL API NO. 30-025-35563
1. Type of Well: Oil Well <input checked="" type="checkbox"/> Gas Well <input type="checkbox"/> Other <u>INJECTION</u>		5. Indicate Type of Lease STATE <input checked="" type="checkbox"/> FEE <input type="checkbox"/>
2. Name of Operator CHEVRON U.S.A. INC.		6. State Oil & Gas Lease No.
3. Address of Operator 15 SMITH ROAD, MIDLAND, TEXAS 79705		7. Lease Name or Unit Agreement Name VACUUM GRAYBURG SAN ANDRES UNIT
4. Well Location Unit Letter F: 1390 feet from the NORTH line and 2530 feet from the WEST line Section 1 Township 18-S Range 34-E NMPM County LEA		8. Well Number 249
11. Elevation (Show whether DR, RKB, RT, GR, etc.)		9. OGRID Number 4323
		10. Pool name or Wildcat VACUUM GRAYBURG SAN ANDRES

12. Check Appropriate Box to Indicate Nature of Notice, Report or Other Data

NOTICE OF INTENTION TO:

PERFORM REMEDIAL WORK ☐ PLUG AND ABANDON ☐
TEMPORARILY ABANDON ☐ CHANGE PLANS ☐
PULL OR ALTER CASING ☐ MULTIPLE COMPL ☐
DOWNHOLE COMMINGLE ☐

SUBSEQUENT REPORT OF:

REMEDIAL WORK ☐ ALTERING CASING ☐
COMMENCE DRILLING OPNS. ☐ P AND A ☐
CASING/CEMENT JOB ☐

OTHER:

OTHER REPAIR MIT FAILURE W/CHART

13. Describe proposed or completed operations. (Clearly state all pertinent details, and give pertinent dates, including estimated date of starting any proposed work). SEE RULE 19.15.7.14 NMAC. For Multiple Completions: Attach wellbore diagram of proposed completion or recompletion.

PLEASE FIND, ATTACHED, REPORTS FOR WORK DONE FROM 05/28/2013 THROUGH 06/03/2013.

06-03-2013: NOTIFIED NMOCD. RAN CHART. PRESS TO 580 PSI FOR 30 MINUTES. (ORIGINAL CHART & COPY OF CHART ATTACHED).

Spud Date:

Rig Release Date:

I hereby certify that the information above is true and complete to the best of my knowledge and belief.

SIGNATURE

Denise Pinkerton

TITLE: REGULATORY SPECIALIST

DATE: 06/26/2013

Type or print name: DENISE PINKERTON

E-mail address: leakejd@chevron.com

PHONE: 432-687-7375

APPROVED BY

[Signature]

TITLE

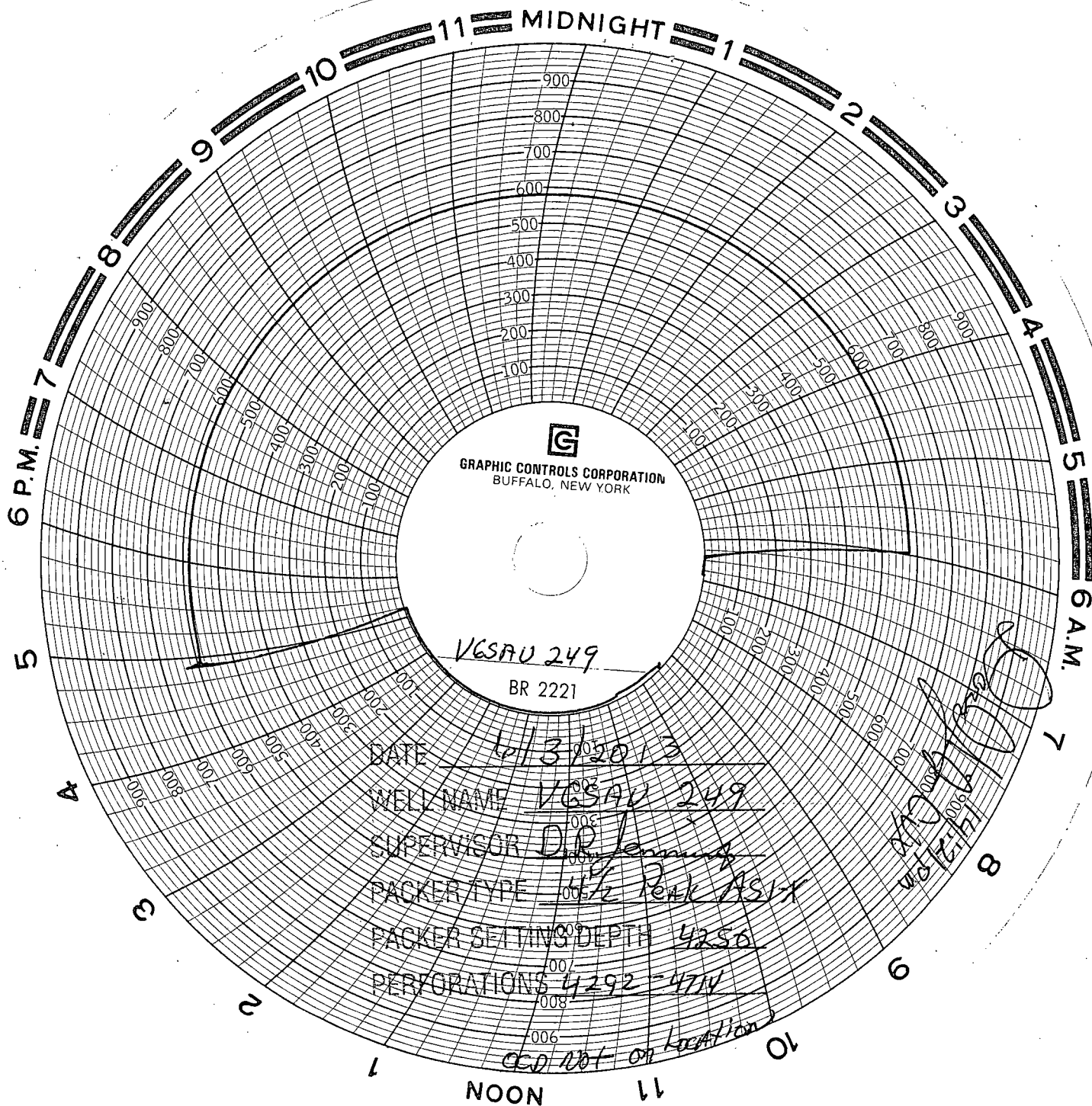
Dist. Mgr

DATE

7-11-2013

Conditions of Approval (if any):

JUL 11 2013





Summary Report

Major Rig Work Over (MRWO)
Mechanical Integrity Test
Job Start Date: 5/28/2013
Job End Date: 6/3/2013

Well Name VACUUM GRAYBURG SA UNIT 249		Lease Vacuum Grayburg San Andres Unit	Field Name Vacuum	Business Unit Mid-Continent	
Ground Elevation (ft) 3,991.00	Original RKB (ft) 4,004.00	Current RKB Elevation		Mud Line Elevation (ft)	Water Depth (ft)

Report Start Date: 5/28/2013

Com

road rig from hobbs to location

review jsa's on rigging up workover unit

move in ru workover rig 331, move in frac tanks, hydro walk, pipe racks, reverse unit,

flow down injection lines to disconnect injection line

tie on to tubing and casing, tubing had 850 psi and casing had 0 psi, open tubing to half frac and blow CO2 head off of well

mi ru gray wire line and set plug in profile @4262, load and test plug and tubing to 1200 psi, load and test backside to 540 psi, held for 15 minutes, changed out trucks and gih with guns, and shoot drain holes above packer at 4191, pooh with guns, rd wire line, circ hole with 60 bbls brine water,

nd wellhead, nu bop, secure well

crew travel

Report Start Date: 5/29/2013

Com

crew travel to location

reviewed jsa's, check tubing elevators for correct size, checked tubing and csg pressure, both read zero psi

move in ru Gray Slickline, prejob safety mtg, load and test lubercator to 1000 psi, held gih with tool punch, while starting to punch plug saw leak below lubercator, pooh with slickline and repair leak and retest lubercator to 1000 psi, gih with punch, couldn't get to plug, pooh with punch and found out he ran 1 7/8 punch and couldn't get into 1.43 nipple, changed out punch and gih and couldn't punch plug, pooh and went in the hole with a spear and finally lost pressure, pumped 5 bbls down tubing, pooh with spear and gih with grapple and pump 15 bbls down tubing and, pooh and fish blanking plug, rd slickline

release packer, move in pipe racks and workstring, ru tubing scanners

start of hole scanning 2 3/8 fiberline tubing, secure well

crew travel

Report Start Date: 5/30/2013

Com

Travel to location

reviewed jsa's, check tubing elevators for correct size, checked tubing and csg pressure, both read 300 psi

pumped 40 bbls 10# brine down casing and 12 bbls brine down tubing, open well, well flowed back .5 bpm, move in 14.5 mud and spot 22 bbl mud plug below packer

finish pooh with 134 jts 2 3/8 fiberline tubing scanning out of hole, scanned 133 jts yellow and one joint red(due to drain holes)

gih with rbp and test blinds to 250 low and 750 high, held

gih with 3 1/4 bit on 8 2 3/8 drill collars and 142 jts 2 3/8 workstring and tag @ 4710'

ru stripper head and power swevel and star tring to break circ, finally got mud out and started circ good

continue to clean out to 4837'

circ hole clean

pooh with 20 jts, leaving bit above top perf, secure well

crew travel

Report Start Date: 5/31/2013

Com

contacted Maxey Brown with OCD and left message on his phone on MIT test on monday I called at 12:30 pm

crew travel to location

reviewed jsa's, check tubing elevators for correct size and logged, checked tubing and csg pressure, 125 psi on casing, 0 on tubing

pump 10 bbls 14.5 mud down casing and flush with 10 bbls water, tied onto tubing and found tubing plugged, attempted to unplug tubing but couldn't

wait on e-line truck to arrive on location, while waiting on truck, talley new injection pipe

mi ru E-Line: prejob safety meeting, test lubercator to 1000 psi, gih with perf gun and tag @ 3943' pull up hole and shoot drain hole 3928', pooh with perf gun, rd wireline

pooh with workstring and laying down on racks, lay down drill collars and bit (found dehydrated mud in bit and bit sub

start in hole with packer and 2 3/8 fiberline tubing,

crew travel

Report Start Date: 6/3/2013

Com

crew travel

review jsa's, check tubing elevators for correct size, check casing psi, 400#

flow well to frac tank, wait on mud to kill well

pump 15 bbls of 14.5 mud, spot mud at 3000'

finish gih with land do-nut, transition sub, 10' 2 3/8 fiberline tubing sub, 6" 2 3/8 fiberline tubing sub, 4' 2 3/8 fiberline tubing sub, 133 jts 2 3/8 fiberline tubing, on/off tool with 1.43 F profile nipple, 4 1/2 AS1-X nickle plated packer with pump out plug, packer landed @4250' 10 points compression

load tubing with packer fluid, set packer, pre test on backside for 30 minutes with 500 psi on casing, get off on/off tool and circ packer fluid and get mud out of hole

rd working floor and nd bop, nu wellhead



Summary Report

Major Rig Work Over (MRWO)
Mechanical Integrity Test
Job Start Date: 5/28/2013
Job End Date: 6/3/2013

Well Name VACUUM GRAYBURG SA UNIT 249		Lease Vacuum Grayburg San Andres Unit	Field Name Vacuum	Business Unit Mid-Continent	
Ground Elevation (ft) 3,991.00	Original RKB (ft) 4,004.00	Current RKB Elevation		Mud Line Elevation (ft)	Water Depth (ft)

Com

test injection tree to 3000 psi hel

conduct MIT, OCD not on location 580 psi, held for 35 minutes, no pressure drop on gain, will turn chart into Buckeye FMT

rd workover rig 331, clean location, FINIAL REPORT

crew travel