

JUN 18 2013

## District I

1625 N. French Dr., Hobbs, NM 88240

## District II

1301 W. Grand Avenue, Artesia, NM 88210

## District III

1000 Rio Brazos Rd., Aztec, NM 87410

## District IV

1220 S. St. Francis Dr., Santa Fe, NM 87505

State of New Mexico  
Energy, Minerals & Natural Resources Department  
**OIL CONSERVATION DIVISION**  
1220 South St. Francis Dr.  
Santa Fe, NM 87505

Form C-102

RECEIVED  
Revised October 15, 2009Submit one copy to appropriate  
District Office☐ AMENDED REPORT

## WELL LOCATION AND ACREAGE DEDICATION PLAT

API Number 30-025-40046		Pool Code 92838 <b>49490</b>	Pool Name <b>PADUCA; Delaware, NORTH</b>
Property Code 38384	Property Name <b>TRIONYX "6" FED.</b>		Well Number 6H
OGRID No. 6137	Operator Name <b>DEVON ENERGY PRODUCTION COMPANY, L.P.</b>		Elevation 3443.6

## 10 Surface Location

UL or lot no.	Section	Township	Range	Lot 1dn	Feet from the	North/South line	Feet from the	East/West line	County
O	6	25 S	32 E		200	SOUTH	2260	EAST	LEA

## 11 Bottom Hole Location If Different From Surface

UL or lot no.	Section	Township	Range	Lot 1dn	Feet from the	North/South line	Feet from the	East/West line	County
B	6	25 S	32 E		330	NORTH	1650	EAST	LEA

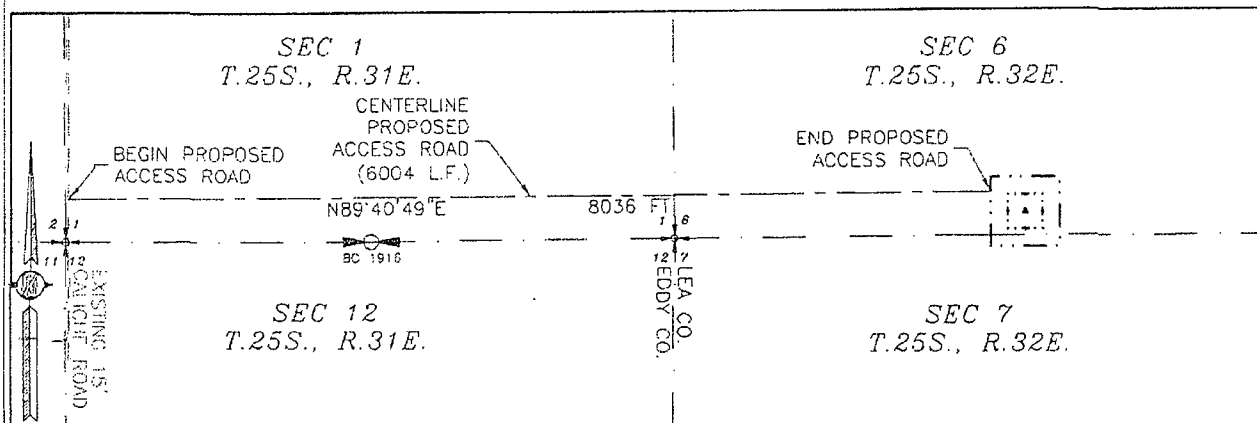
12 Dedicated Acres	13 Joint or Infill	14 Consolidation Code	15 Order No.
640			

No allowable will be assigned to this completion until all interests have been consolidated or a non-standard unit has been approved by the division.

NW CORNER SEC. 6 LAT. = 32°09'59.79"N LONG. = 103°43'22.69"W NMSP EAST (FT) N = 424822.54 E = 730212.74	<div style="text-align: center;"> </div> <div style="text-align: center;"> <b>TRIONYX "6" FED. #6H</b>          ELEV. = 3443.6          LAT. = 32°09'09.561"N (NAD83)          LONG. = 103°42'47.141"W          NMSP EAST (FT)          N = 419763.17          E = 733298.08       </div>	NE CORNER SEC. 6 LAT. = 32°09'59.95"N LONG. = 103°42'21.08"W NMSP EAST (FT) N = 424889.56 E = 735509.64	<b>12 OPERATOR CERTIFICATION</b> I hereby certify that the information contained herein is true and complete to the best of my knowledge and belief, and that this organization either owns a working interest or undivided mineral interest in the land including the proposed bottom hole location or has a right to drill this well at this location pursuant to a contract with an owner of such a mineral or working interest, or to a voluntary pooling agreement or a compulsory pooling order heretofore entered by the division. <div style="text-align: right;">           Date: 5/17/2013       </div>
SW CORNER SEC. 6 LAT. = 32°09'07.59"N LONG. = 103°43'22.75"W NMSP EAST (FT) N = 419546.45 E = 730236.48	HEAL TARGET LAT. = 32°09'15.50"N LONG. = 103°42'40.06"W NMSP EAST (FT) N = 420367.37 E = 733901.85	SE CORNER SEC. 6 LAT. = 32°09'07.61"N LONG. = 103°42'20.85"W NMSP EAST (FT) N = 419578.91 E = 735560.23	<b>13 SURVEYOR CERTIFICATION</b> I hereby certify that the well location shown on this plat was plotted from field notes of a duly qualified surveyor made by me or under my supervision, and that the same is true and correct to the best of my belief. AUGUST 19, 2010 <div style="text-align: right;">           Date of Survey: AUGUST 19, 2010          Signature and Seal of Professional Surveyor          Certificate Number: FLEMING PATRICK M. O. PLS 12797          SURVEY NO. 191       </div>

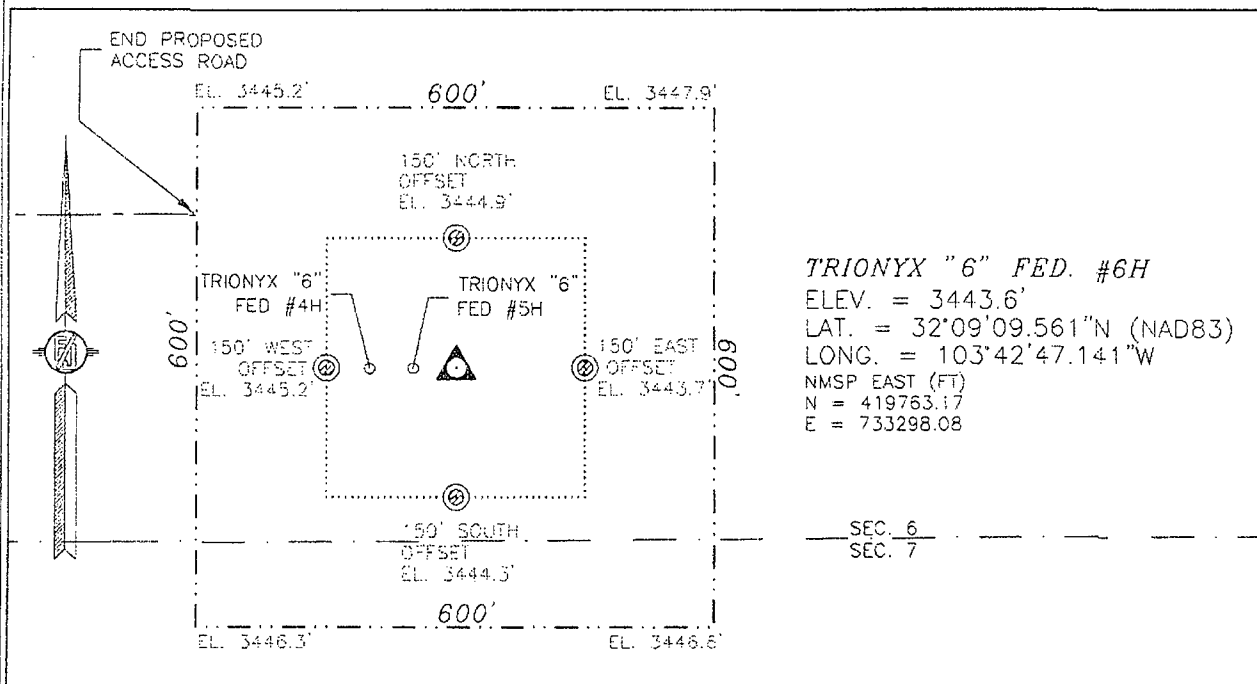
JUL 17 2013

SECTION 6, TOWNSHIP 25 SOUTH, RANGE 32 EAST, N.M.P.M.  
LEA COUNTY, STATE OF NEW MEXICO



0150 750 1500 3000  
SCALE 1" = 1500

SITE ACCESS



TRIONYX "6" FED. #6H  
ELEV. = 3443.6'  
LAT. = 32°09'09.561"N (NAD83)  
LONG. = 103°42'47.141"W  
NMSP EAST (FT)  
N = 419763.17  
E = 733298.08

020 100 200 400  
SCALE 1" = 200

WELL SITE

DIRECTIONS TO LOCATION  
FROM CR.# 786 (BUCK JACKSON) (CALICHE) AND CR.# 791 (BUCK THORN) (CALICHE) GO SOUTH ON CR. 791 3.1 MILES TURN LEFT AND GO EAST 1.9 MILES, TURN LEFT AND GO NORTH 0.25 MILES TO A PROPOSED ROAD SURVEY AND FOLLOW FLAGS EAST 8036' TO THE NORTHWEST CORNER OF THE PROPOSED PAD FOR THIS LOCATION.

DEVON ENERGY PRODUCTION COMPANY, L.P.  
TRIONYX "6" FED. #6H  
LOCATED 200 FT. FROM THE SOUTH LINE  
AND 2260 FT. FROM THE EAST LINE OF  
SECTION 6, TOWNSHIP 25 SOUTH,  
RANGE 32 EAST, N.M.P.M.  
LEA COUNTY, STATE OF NEW MEXICO

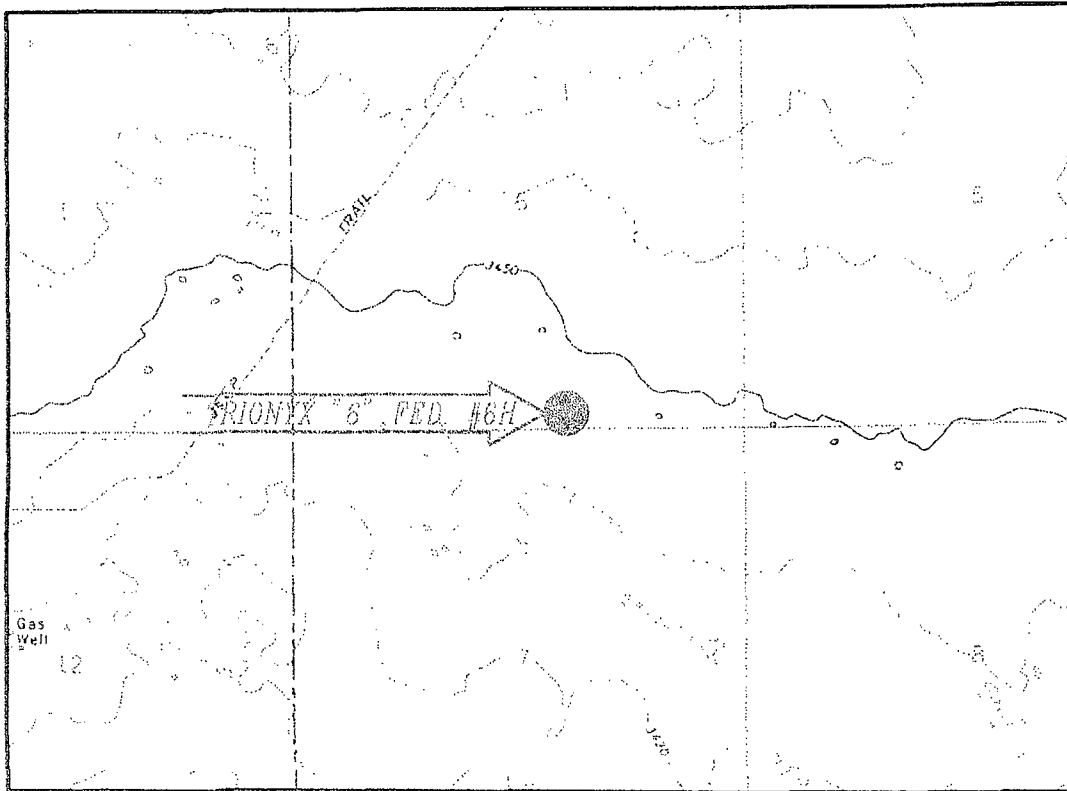
AUGUST 19, 2010

SURVEY NO. 194

MADRON SURVEYING, INC. 301 SOUTH CANAL (575) 857-0830 CARLSBAD, NEW MEXICO

SECTION 6, TOWNSHIP 25 SOUTH, RANGE 32 EAST, N.M.P.M.  
LEA COUNTY, STATE OF NEW MEXICO

## LOCATION VERIFICATION MAP



CONTOUR INTERVAL:  
PADUCA BREAKS NW

NOT TO SCALE

### DIRECTIONS TO LOCATION

FROM CR. # 786 (BUCK JACKSON) (CALICHE) AND CR. # 791 (BUCK THORN) (CALICHE) GO SOUTH ON CR. 791 3.1 MILES TURN LEFT AND GO EAST 1.9 MILES. TURN LEFT AND GO NORTH 0.25 MILES TO A PROPOSED ROAD SURVEY AND FOLLOW FLAGS EAST 8036' TO THE NORTHWEST CORNER OF THE PROPOSED PAD FOR THIS LOCATION.

SEC. 6 TWP. 25-S RGE. 32-E  
SURVEY N.M.P.M.  
COUNTY LEA STATE NEW MEXICO  
DESCRIPTION 200' FSL & 2260' FEL  
ELEVATION 3443.6'  
OPERATOR DEVON ENERGY PRODUCTION COMPANY, LP  
LEASE TRIONYX

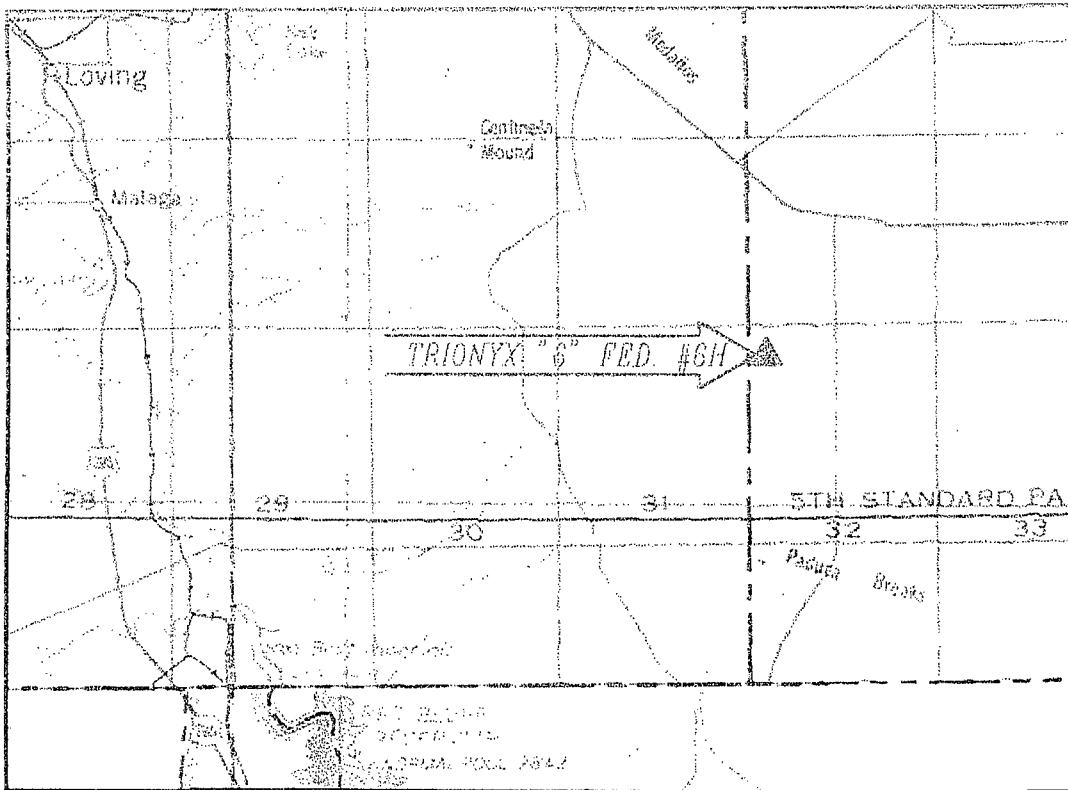
DEVON ENERGY PRODUCTION COMPANY, L.P.  
TRIONYX "6" FED. #6H  
LOCATED 200 FT. FROM THE SOUTH LINE  
AND 2260 FT. FROM THE EAST LINE OF  
SECTION 6, TOWNSHIP 25 SOUTH,  
RANGE 32 EAST, N.M.P.M.  
LEA COUNTY, STATE OF NEW MEXICO

AUGUST 19, 2010

SURVEY NO. 194

MADRON SURVEYING, INC. 301 SOUTH CANAL CARLSBAD, NEW MEXICO  
(505) 927-2835

SECTION 6, TOWNSHIP 25 SOUTH, RANGE 32 EAST, N.M.P.M.  
LEA COUNTY, STATE OF NEW MEXICO  
VICINITY MAP



DIRECTIONS TO LOCATION

FROM CR.# 786 (BUCK JACKSON) (CALICHE) AND CR.# 791 (BUCK THORN) (CALICHE) GO SOUTH ON CR. 791 3.1 MILES TURN LEFT AND GO EAST 1.9 MILES, TURN LEFT AND GO NORTH 0.25 MILES TO A PROPOSED ROAD SURVEY AND FOLLOW FLAGS EAST 8036' TO THE NORTHWEST CORNER OF THE PROPOSED PAD FOR THIS LOCATION.

NOT TO SCALE

SEC. 6 TWP. 25-S RGE. 32-E  
SURVEY N.M.P.M.  
COUNTY LEA STATE NEW MEXICO  
DESCRIPTION 200' FSL & 2260' FSL  
ELEVATION 3443.6'  
OPERATOR DEVON ENERGY PRODUCTION COMPANY, LP  
LEASE TRIONYX

DEVON ENERGY PRODUCTION COMPANY, L.P.  
TRIONYX "6" FED. #6H  
LOCATED 200 FT. FROM THE SOUTH LINE  
AND 2260 FT. FROM THE EAST LINE OF  
SECTION 6, TOWNSHIP 25 SOUTH,  
RANGE 32 EAST, N.M.P.M.  
LEA COUNTY, STATE OF NEW MEXICO

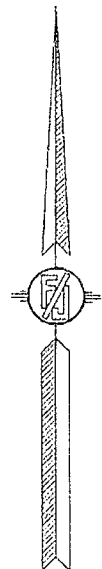
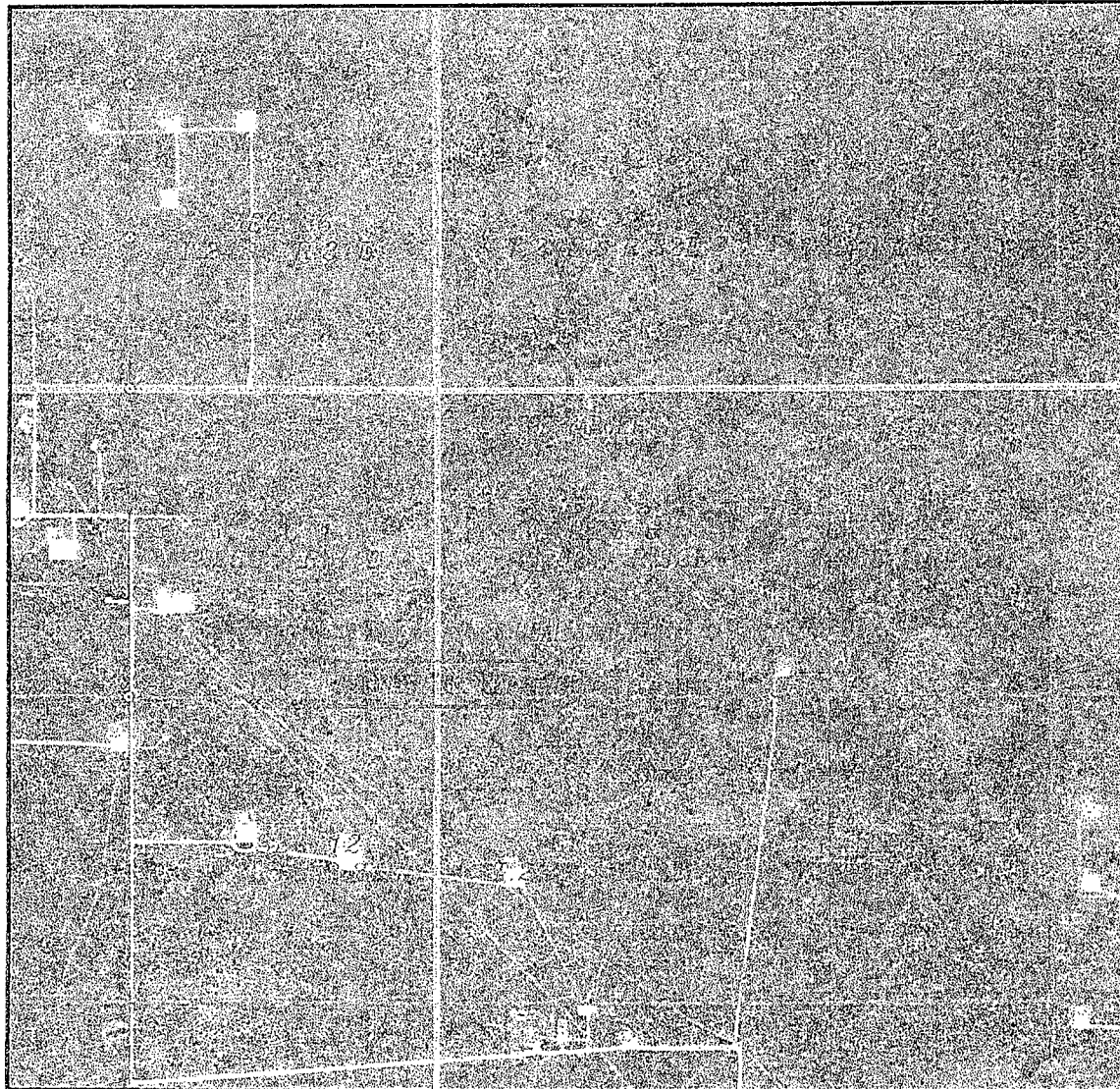
AUGUST 19, 2010

SURVEY NO. 194

MADRON SURVEYING, INC. 445 S. CARLSBAD, NEW MEXICO

SECTION 6, TOWNSHIP 25 SOUTH, RANGE 32 EAST, N.M.P.M.  
LEA COUNTY, STATE OF NEW MEXICO

## AERIAL PHOTO



NOT TO SCALE  
AERIAL PHOTO:  
GOOGLE EARTH  
USDA - AUG, 2009

DEVON ENERGY PRODUCTION COMPANY, L.P.  
TRIONYX "6" FED. #6H  
LOCATED 200 FT. FROM THE SOUTH LINE  
AND 2260 FT. FROM THE EAST LINE OF  
SECTION 6, TOWNSHIP 25 SOUTH,  
RANGE 32 EAST, N.M.P.M.  
LEA COUNTY, STATE OF NEW MEXICO

AUGUST 19, 2010

SURVEY NO. 194

MADRON SURVEYING, INC. 201 SOUTH CARR (1975) 447-2830 CARLSBAD, NEW MEXICO