

HOBBS OCD

JUL 23 2013

Form C-102

Revised August 1, 2011

Submit one copy to appropriate

District Office

RECEIVED

☐ AMENDED REPORT

District I
1625 N. French Dr., Hobbs, NM 88240
Phone: (575) 393-6161 Fax: (575) 393-0720
District II
811 S. First St., Artesia, NM 88210
Phone: (575) 748-1283 Fax: (575) 748-9720
District III
1000 Rio Brazos Road, Aztec, NM 87410
Phone: (505) 334-6178 Fax: (505) 334-6170
District IV
1220 S. St. Francis Dr., Santa Fe, NM 87505
Phone: (505) 476-3460 Fax: (505) 476-2462

State of New Mexico
Energy, Minerals & Natural Resources Department
OIL CONSERVATION DIVISION
1220 South St. Francis Dr.
Santa Fe, NM 87505

WELL LOCATION AND ACREAGE DEDICATION PLAT

1 API Number 30-025-32894		2 Pool Code 96802		3 Pool Name Bell Canyon/Cherry Canyon; Delaware	
4 Property Code 1682 40035		5 Property Name MADERA 12 FED - API 30-025-32894			6 Well Number 1
7 OGRID No. 6137		8 Operator Name DEVON ENERGY PRODUCTION COMPANY, L.P.			9 Elevation 3278.1

10 Surface Location

UL or lot no.	Section	Township	Range	Lot Idn	Feet from the	North/South line	Feet from the	East/West line	County
K	12	26 S	34 E		1980	SOUTH	1980	WEST	LEA

11 Bottom Hole Location If Different From Surface

UL or lot no.	Section	Township	Range	Lot Idn	Feet from the	North/South line	Feet from the	East/West line	County

12 Dedicated Acres	13 Joint or Infill	14 Consolidation Code	15 Order No. SWD-1358
--------------------	--------------------	-----------------------	---------------------------------

No allowable will be assigned to this completion until all interests have been consolidated or a non-standard unit has been approved by the division.

S89°41'14"W 2639.97 FT		S89°41'52"W 2643.01 FT	
NW CORNER SEC. 12 LAT. = 32.0651736°N LONG. = 103.4321776°W NMSP EAST (FT) N = 388613.22 E = 820492.31	N O CORNER SEC. 12 LAT. = 32.0651523°N LONG. = 103.4236573°W HMSP EAST (FT) N = 388627.63 E = 823131.85	NE CORNER SEC. 12 LAT. = 32.0651291°N LONG. = 103.4151272°W HMSP EAST (FT) N = 388641.56 E = 825774.41	
W O CORNER SEC. 12 LAT. = 32.0579118°N LONG. = 103.4321745°W NMSP EAST (FT) N = 385971.44 E = 820515.33	MADERA 12 FED 1 - API 30-025-32894 ELEV. = 3278.1 LAT. = 32.0560904°N (NAD83) LONG. = 103.4257830°W NMSP EAST (FT) N = 385325.46 E = 822501.04		E O CORNER SEC. 12 LAT. = 32.0578695°N LONG. = 103.4151251°W NMSP EAST (FT) N = 386000.57 E = 825797.54
SW CORNER SEC. 12 LAT. = 32.0506494°N LONG. = 103.4321678°W NMSP EAST (FT) N = 383329.50 E = 820539.46	S O CORNER SEC. 12 LAT. = 32.0506483°N LONG. = 103.4236490°W NMSP EAST (FT) N = 383351.22 E = 823178.88	SE CORNER SEC. 12 LAT. = 32.0506145°N LONG. = 103.4151235°W NMSP EAST (FT) N = 383361.28 E = 825820.48	
S00°29'57"E 2642.28 FT		N00°30'06"W 2641.49 FT	
S00°31'24"E 2642.46 FT		N00°29'53"W 2639.73 FT	
SURFACE LOCATION			
N89°31'42"E 2639.90 FT		N89°46'54"E 2642.02 FT	

17 OPERATOR CERTIFICATION
I hereby certify that the information contained herein is true and complete to the best of my knowledge and belief, and that this organization either owns a working interest or unleased mineral interest in the land including the proposed bottom hole location or has a right to drill this well at this location pursuant to a contract with an owner of such a mineral or working interest, or to a voluntary pooling agreement or a compulsory pooling order heretofore entered by the division.

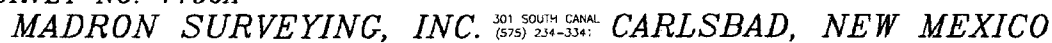
Signature: *D. H. Cook* Date: 10/24/2012
David H. Cook
Printed Name
david.cook@dvn.com
E-mail Address

18 SURVEYOR CERTIFICATION
I hereby certify that the well location shown on this plat was plotted from field notes of actual surveys made by me or under my supervision and that the same is true and correct to the best of my belief.

Date of Survey: AUGUST 22, 2012
Signature and Seal of Professional Surveyor: *[Signature]*
Certificate Number: 1190A
FILIXION A. GARCIA MILLO, PLS 12797
SURVEY NO. 1190A

JUL 24 2013

SECTION 12, TOWNSHIP 26 SOUTH, RANGE 34 EAST, N.M.P.M.
LEA COUNTY, STATE OF NEW MEXICO



301 SOUTH CANAL
(575) 234-334;

CARLSBAD, NEW MEXICO

MADERA 12 FED SWD #1
API 30-025-32894

NOT TO SCALE

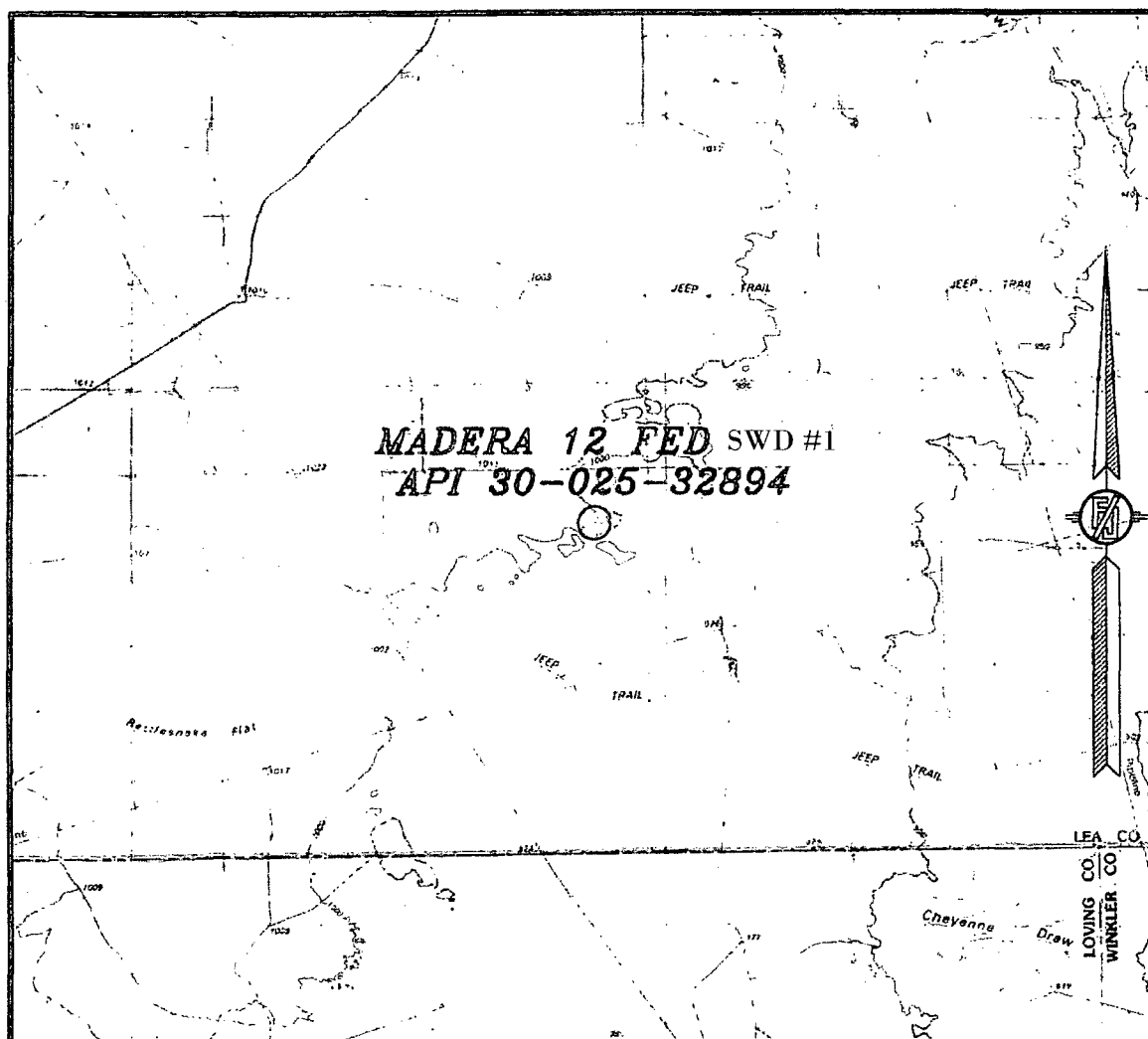
AUGUST 22, 2012

MADRON SURVEYING, INC. 301 SOUTH CANAL (575) 234-3341 **CARLSBAD, NEW MEXICO**

301 SOUTH CANAL
(575) 234-3341

JUL 23 2013

SECTION 12, TOWNSHIP 26 SOUTH, RANGE 34 EAST, N.M.P.M.
LEA COUNTY, STATE OF NEW MEXICO
VICINITY MAP



NOT TO SCALE

DEVON ENERGY PRODUCTION COMPANY, L.P.
MADERA 12 FED SWD #1

LOCATED 1980 FT. FROM THE SOUTH LINE
AND 1980 FT. FROM THE WEST LINE OF
SECTION 12, TOWNSHIP 26 SOUTH,
RANGE 34 EAST, N.M.P.M.
LEA COUNTY, STATE OF NEW MEXICO

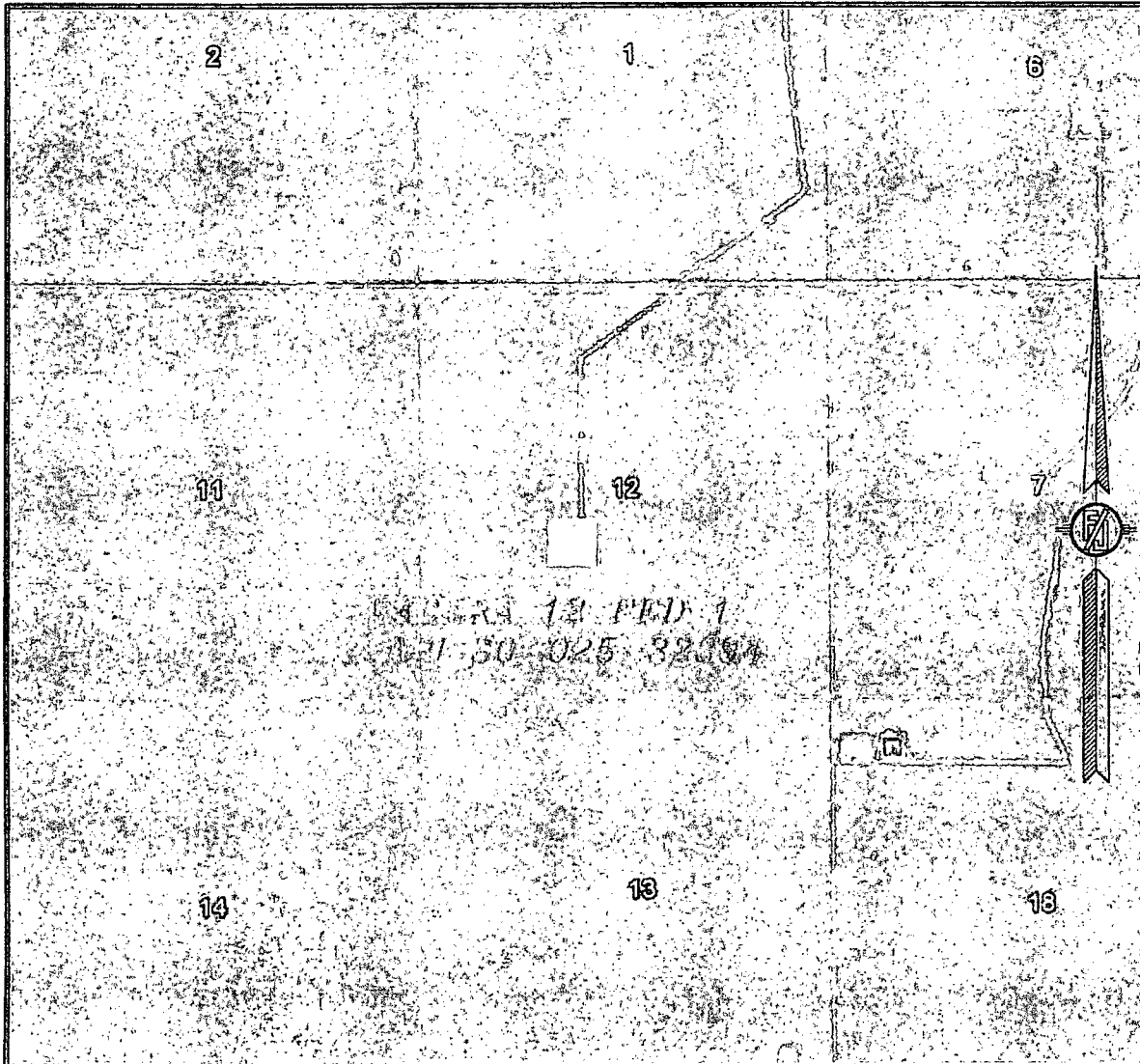
AUGUST 22, 2012

SURVEY NO. 1190A

MADRON SURVEYING, INC. 501 SOUTH CAVAL (575) 234-3341 CARLSBAD, NEW MEXICO

JUL 23 2013

SECTION 12, TOWNSHIP 26 SOUTH, RANGE 34 EAST, N.M.P.M.
LEA COUNTY, STATE OF NEW MEXICO
AERIAL PHOTO



NOT TO SCALE
AERIAL PHOTO:
GOOGLE EARTH
JULY 2011

DEVON ENERGY PRODUCTION COMPANY, L.P.
MADERA 12 FED SWD #1

LOCATED 1980 FT. FROM THE SOUTH LINE
AND 1980 FT. FROM THE WEST LINE OF
SECTION 12, TOWNSHIP 26 SOUTH,
RANGE 34 EAST, N.M.P.M.
LEA COUNTY, STATE OF NEW MEXICO

AUGUST 22, 2012

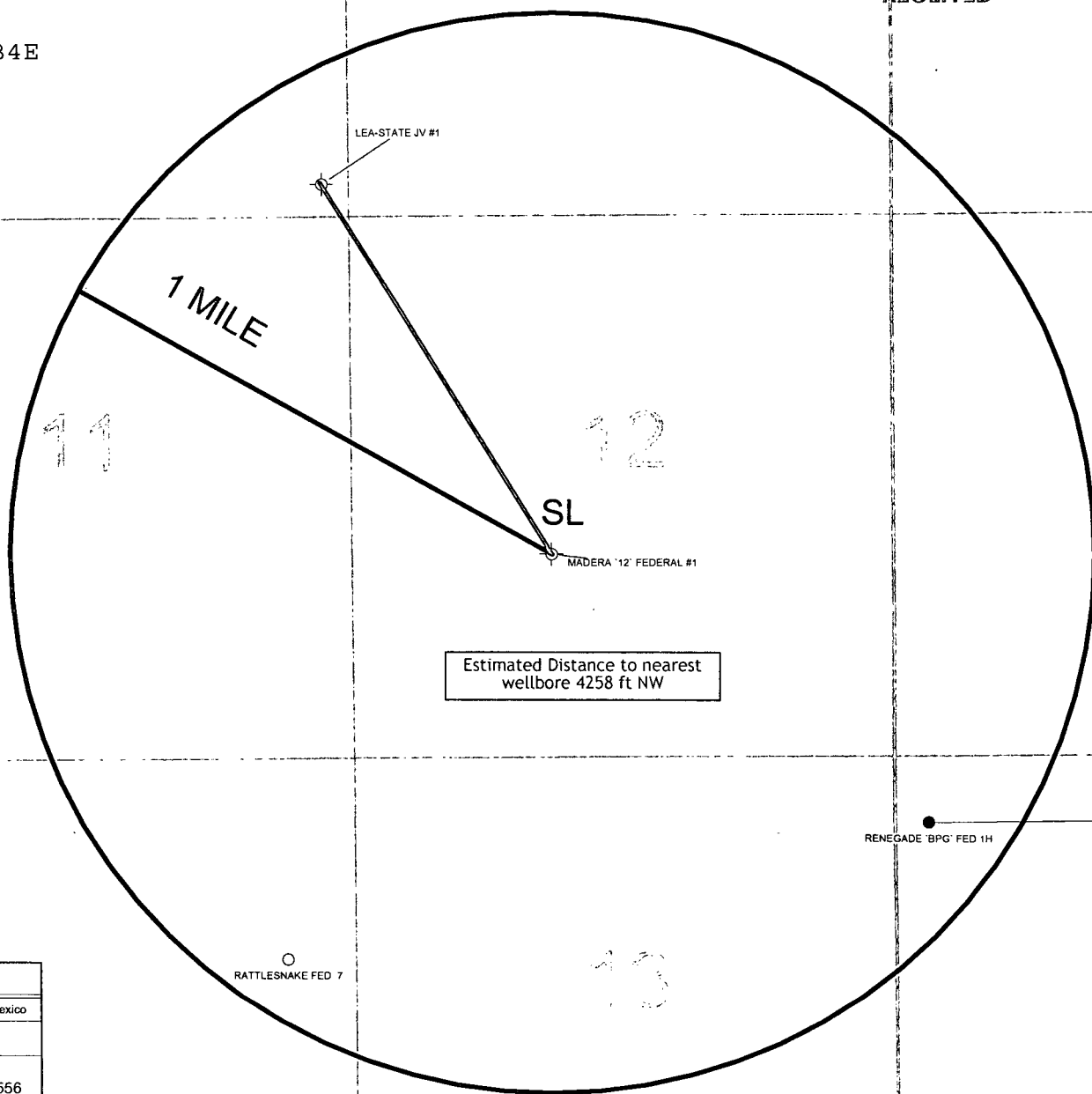
SURVEY NO. 1190A

MADRON SURVEYING, INC. 301 SOUTH CANAL (575) 234-3341 CARLSBAD, NEW MEXICO

JUL 23 2013

RECEIVED

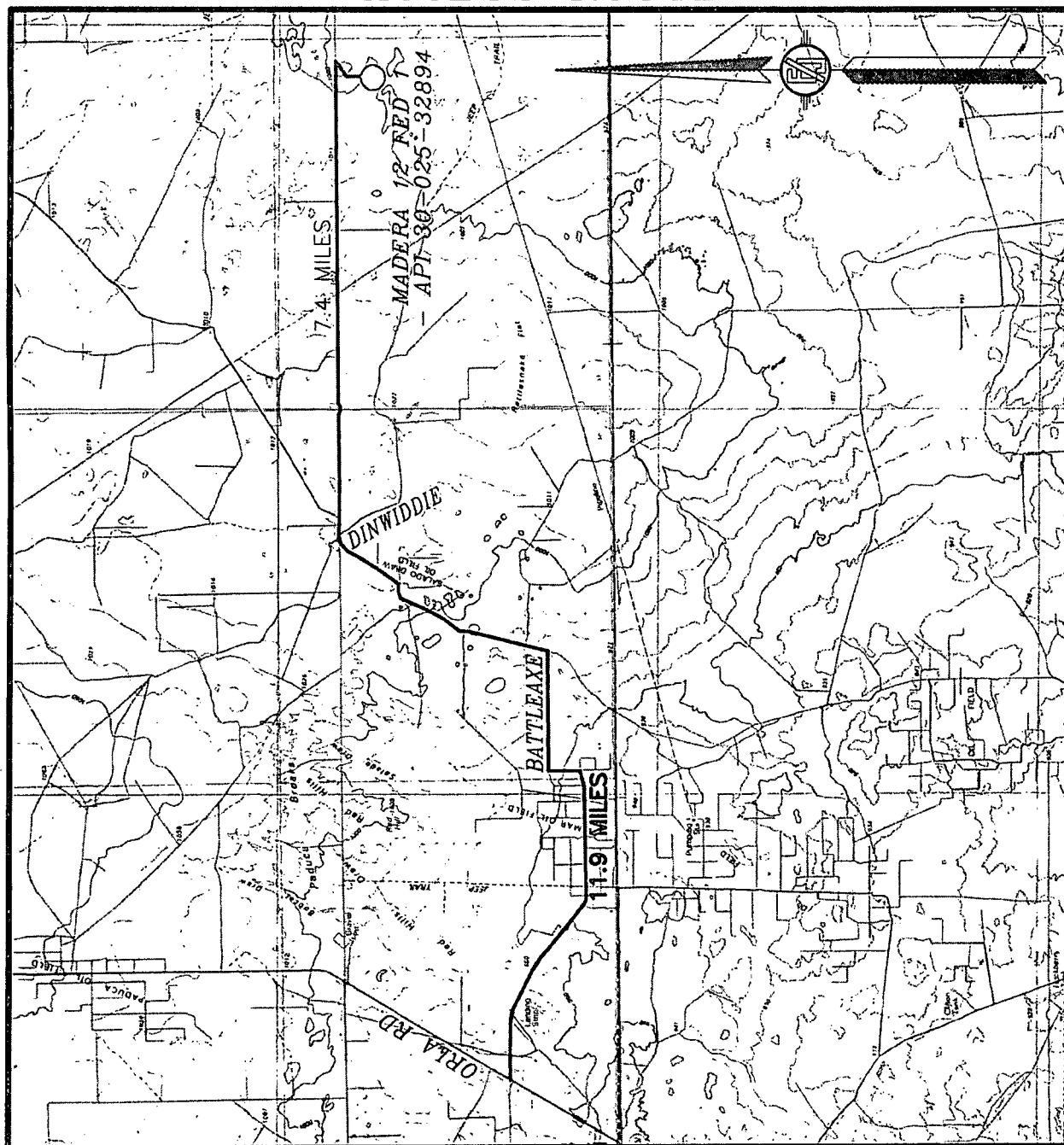
26S - 34E



DEVON
Permian Basin - Southeast New Mexico
1 Mile Radius Map
Madera Federal 12 SWD
0 1,556 FEET
POSTED WELL DATA
Well Label
WELL SYMBOLS
Oil Well
Dry Hole
Abandoned Well
Location Only
June 27, 2012

JUL 23 2013

SECTION 12, TOWNSHIP 26 SOUTH, RANGE 34 EAST, N.M.P.M.
LEA COUNTY, STATE OF NEW MEXICO
ACCESS ROUTE



DEVON ENERGY PRODUCTION COMPANY, L.P.

MADERA 12 FED 1 - API 30-025-32894

LOCATED 1980 FT. FROM THE SOUTH LINE
AND 1980 FT. FROM THE WEST LINE OF

SECTION 12, TOWNSHIP 26 SOUTH,
RANGE 34 EAST, N.M.P.M.

LEA COUNTY, STATE OF NEW MEXICO

NOT TO SCALE

DIRECTIONS TO LOCATION

FROM INTERSECTION OF CR 1 (ORLA ROAD) AND CR 2 (BATTLE AXE ROAD) GO EAST ON CR 2 11.9 MILES WHERE CR 2 BENDS NORTH
GO EAST ON CALICHE ROAD 7.4 MILES JUST PAST CATTLE GUARD
TURN RIGHT ON CALICHE ROAD LEADS TO SITE.

APRIL 19, 2013

SURVEY NO. 1190B

MADRON SURVEYING, INC. 301 SOUTH CANAL (575) 234-3341

CARLSBAD, NEW MEXICO