

DISTRICT I  
1625 N. French Dr., Hobbs, NM 88240  
Phone: (575) 393-6161 Fax: (575) 393-0720

DISTRICT II  
811 S. First St., Artesia, NM 88210  
Phone: (575) 748-1283 Fax: (575) 748-9320

DISTRICT III  
1000 Rio Brazos Road, Aztec, NM 87410  
Phone: (505) 334-6178 Fax: (505) 334-6170

DISTRICT IV  
1220 S. St. Francis Dr., Santa Fe, NM 87505  
Phone: (505) 476-3460 Fax: (505) 476-3462

HOBBS OCD

JUL 29 2013

RECEIVED

State of New Mexico  
Energy, Minerals & Natural Resources Department  
OIL CONSERVATION DIVISION  
1220 South St. Francis Dr.  
Santa Fe, New Mexico 87505

Form C-102  
Revised August 1, 2011  
Submit one copy to appropriate  
District Office

☐ AMENDED REPORT

WELL LOCATION AND ACREAGE DEDICATION PLAT

API Number <b>30-025-41295</b>	Pool Code <b>61850</b>	Pool Name <b>VACUUM; PLINEBRY</b>
Property Code <b>30005</b>	Property Name <b>NEW MEXICO "AN" STATE AN</b>	Well Number <b>14</b>
OGRID No. <b>4323</b>	Operator Name <b>CHEVRON USA INC.</b>	Elevation <b>3949'</b>

Surface Location

UL or lot No.	Section	Township	Range	Lot Idn	Feet from the	North/South line	Feet from the	East/West line	County
A	7	18-S	35-E		540	NORTH	390	EAST	LEA

Bottom Hole Location If Different From Surface

UL or lot No.	Section	Township	Range	Lot Idn	Feet from the	North/South line	Feet from the	East/West line	County

Dedicated Acres <b>40</b>	Joint or Infill	Consolidation Code	Order No.
------------------------------	-----------------	--------------------	-----------

NO ALLOWABLE WILL BE ASSIGNED TO THIS COMPLETION UNTIL ALL INTERESTS HAVE BEEN CONSOLIDATED OR A NON-STANDARD UNIT HAS BEEN APPROVED BY THE DIVISION

1									
37.72 AC. 2									
37.80 AC. 3									
37.88 AC. 4									
37.96 AC.									

540'

390'

GEODETIC COORDINATES  
NAD 27 NME  
SURFACE LOCATION  
Y=644155.6 N  
X=759489.8 E  
LAT.=32.768032° N  
LONG.=103.489155° W

**OPERATOR CERTIFICATION**  
I hereby certify that the information herein is true and complete to the best of my knowledge and belief, and that this organization either owns a working interest or unleased mineral interest in the land including the proposed bottom hole location or has a right to drill this well at this location pursuant to a contract with an owner of such mineral or working interest, or to a voluntary pooling agreement or a compulsory pooling order heretofore entered by the division.

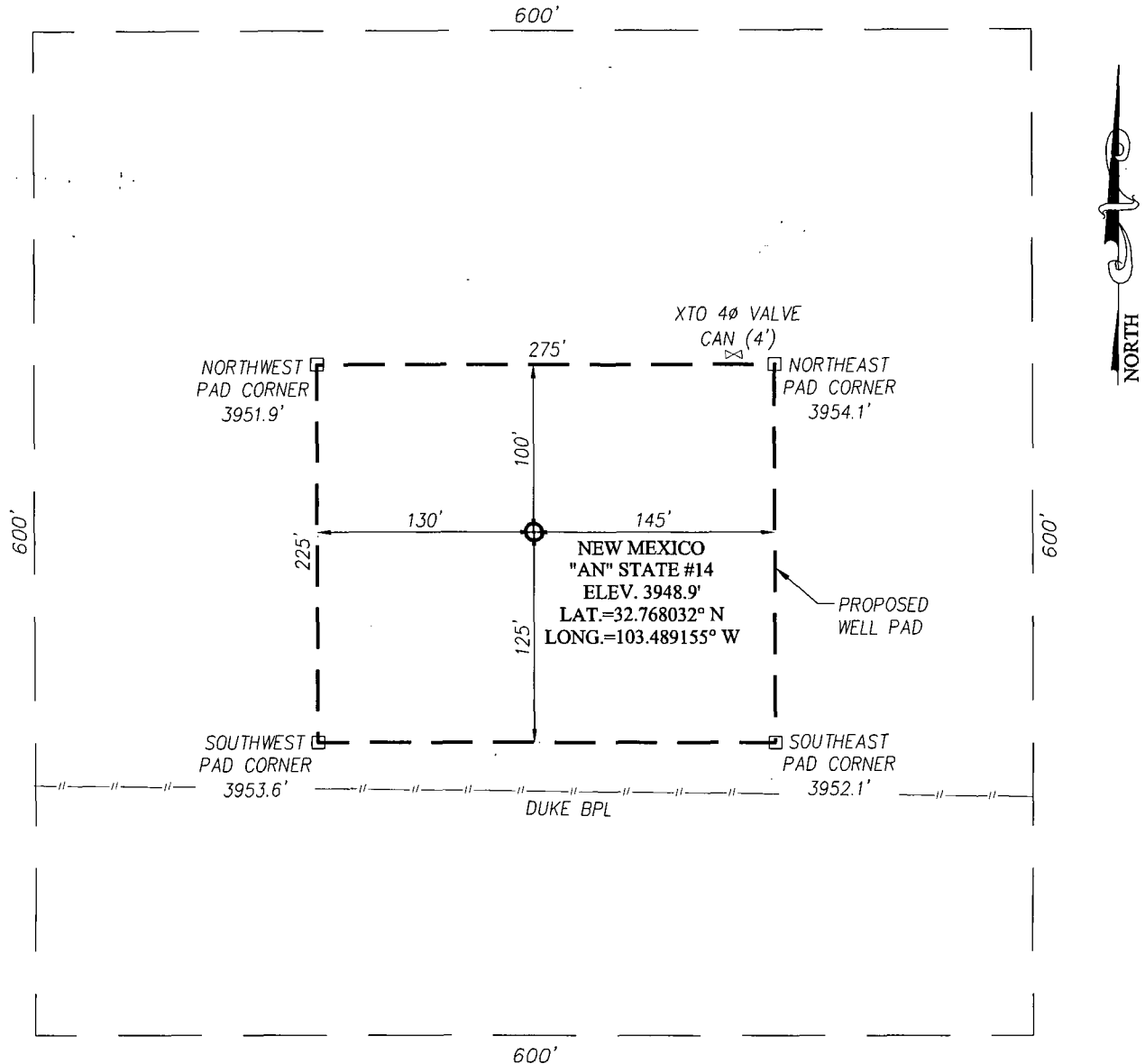
*Denise Pin Kerton* 07/25/2013  
Signature Date  
Denise Pin Kerton  
Printed Name  
Lea.Kejd@chevron.com  
E-mail Address

**SURVEYOR CERTIFICATION**  
I hereby certify that the well location shown on this plat was plotted from field notes of actual surveys made by me or under my supervision, and that the same is true and correct to the best of my belief.

MAY 8, 2012  
Date of Survey  
Signature & Seal of Professional Surveyor:  
*Ronald J. Eidson*  
Certificate Number 3239  
DSS JWSC W.O.: 12.11.0657

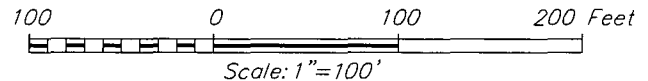
JUL 30 2013

**SECTION 7, TOWNSHIP 18 SOUTH, RANGE 35 EAST, N.M.P.M.**  
**LEA COUNTY** **NEW MEXICO**



**DIRECTIONS TO LOCATION**

FROM THE INTERSECTION OF HWY. 529 AND HWY. 238, GO  
 NORTHWEST ON HWY. 238 APPROX. 6.2 MILES. THIS LOCATION  
 IS APPROX. 700 FEET WEST OF HWY. 238 IN THE BOTTOM OF  
 A CALICHE PIT.



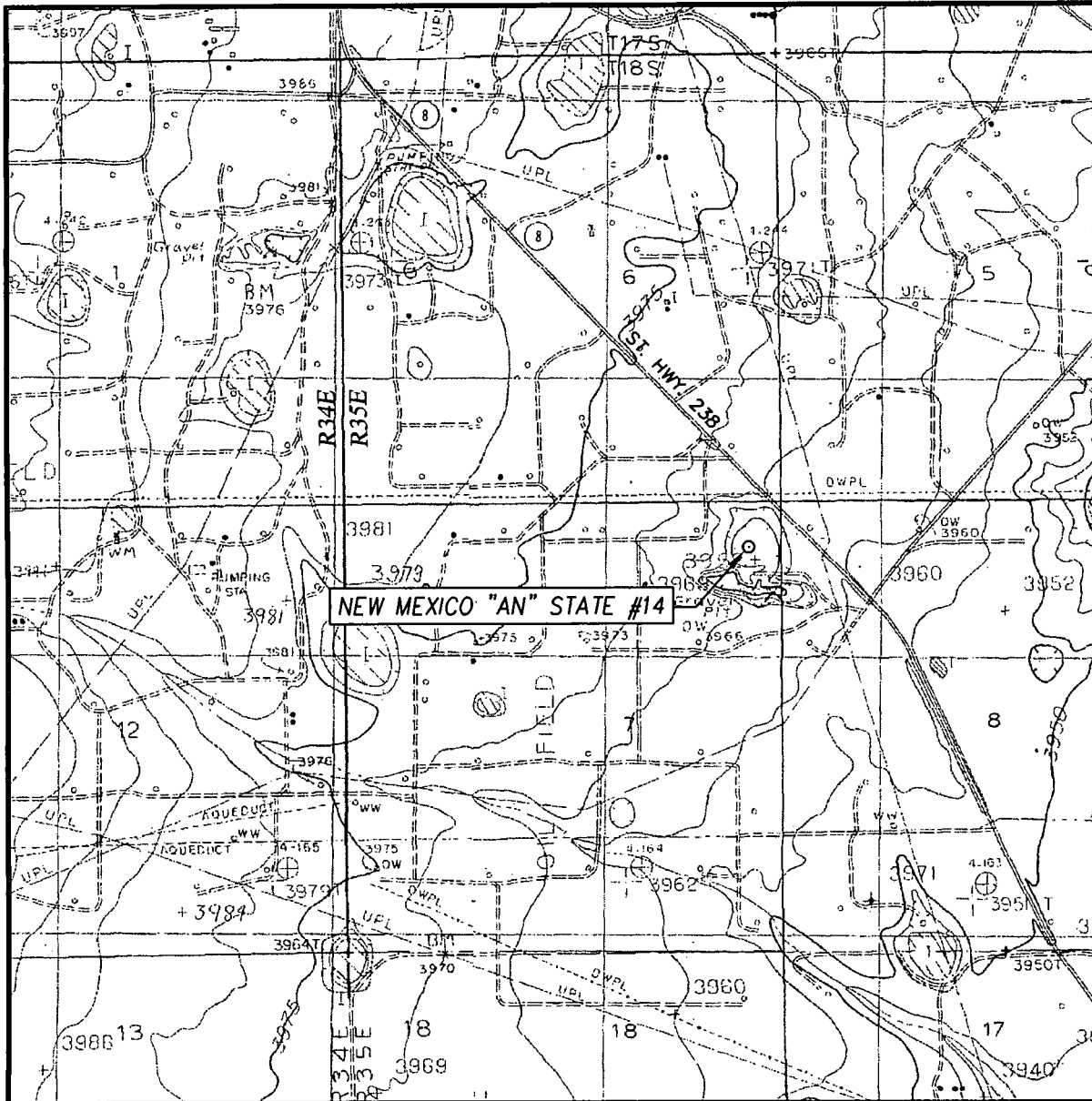
**CHEVRON USA INC.**

**NEW MEXICO "AN" STATE #14 WELL**  
**LOCATED 540 FEET FROM THE NORTH LINE**  
**AND 390 FEET FROM THE EAST LINE OF SECTION 7,**  
**TOWNSHIP 18 SOUTH, RANGE 35 EAST, N.M.P.M.,**  
**LEA COUNTY, NEW MEXICO**

PROVIDING SURVEYING SERVICES  
 SINCE 1946  
**JOHN WEST SURVEYING COMPANY**  
 412 N. DAL PASO  
 HOBBS, N.M. 88240  
 (575) 393-3117 www.jwsc.biz

Survey Date: 5/8/12	CAD Date: 5/28/12	Drawn By: DSS
W.O. No.: 12110657	Rev: .	Rel. W.O.: Sheet 1 of 1

# LOCATION VERIFICATION MAP



SCALE: 1" = 2000'

CONTOUR INTERVAL:  
LOVINGTON SW, N.M. - 5'  
BUCKEYE, N.M. - 5'

SEC. 7 TWP. 18-S RGE. 35-E

SURVEY                      N.M.P.M.

COUNTY LEA STATE NEW MEXICO

DESCRIPTION 540' FNL & 390' FEL

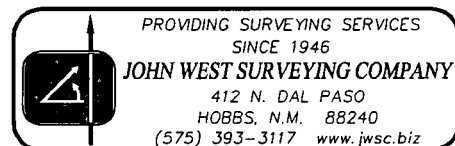
ELEVATION 3949'

OPERATOR CHEVRON USA INC.

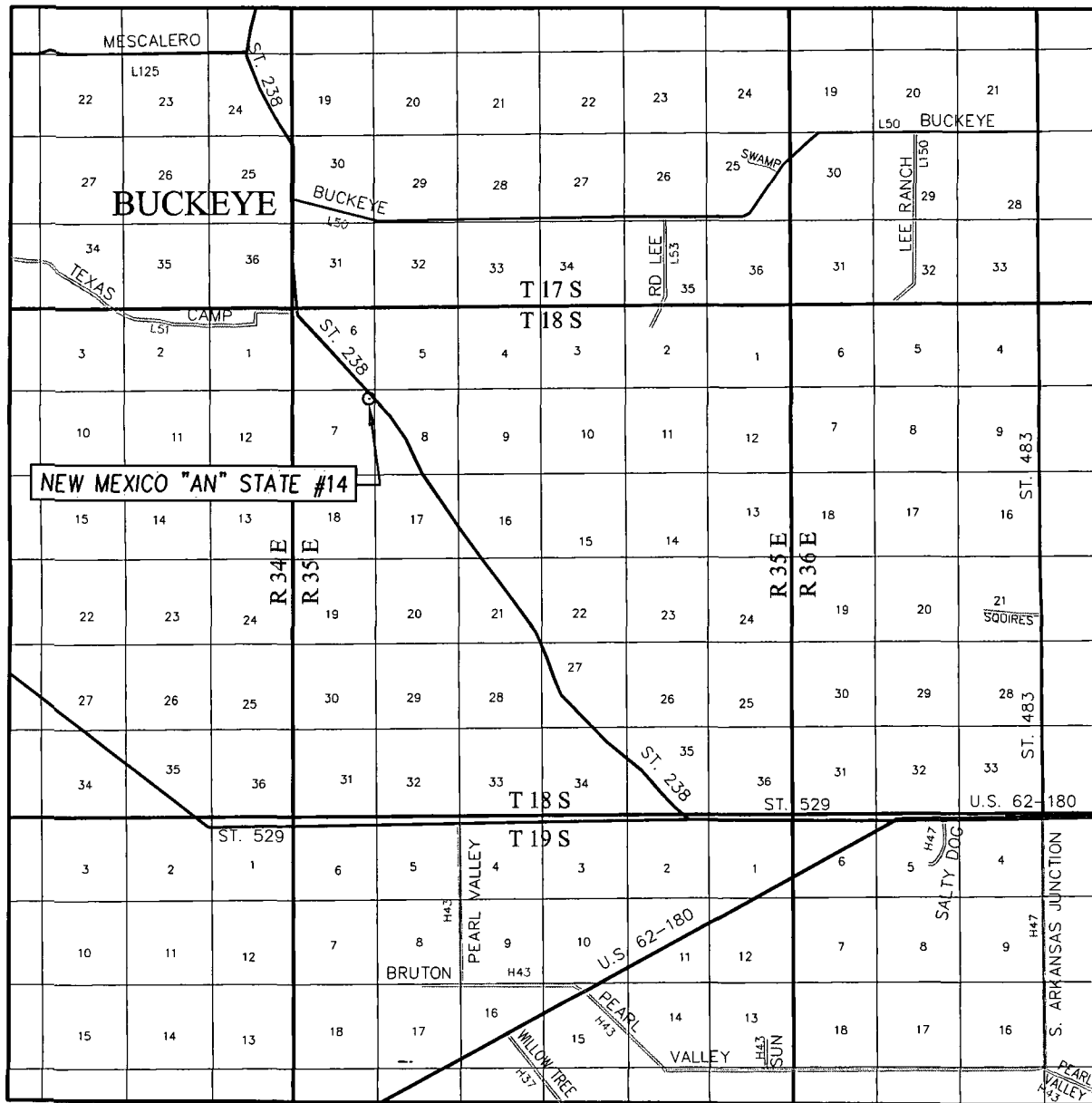
LEASE NEW MEXICO "AN" STATE

U.S.G.S. TOPOGRAPHIC MAP

LOVINGTON SW, N.M.

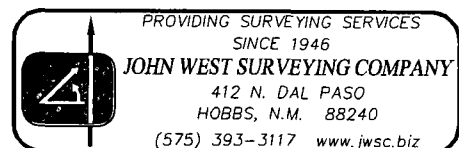


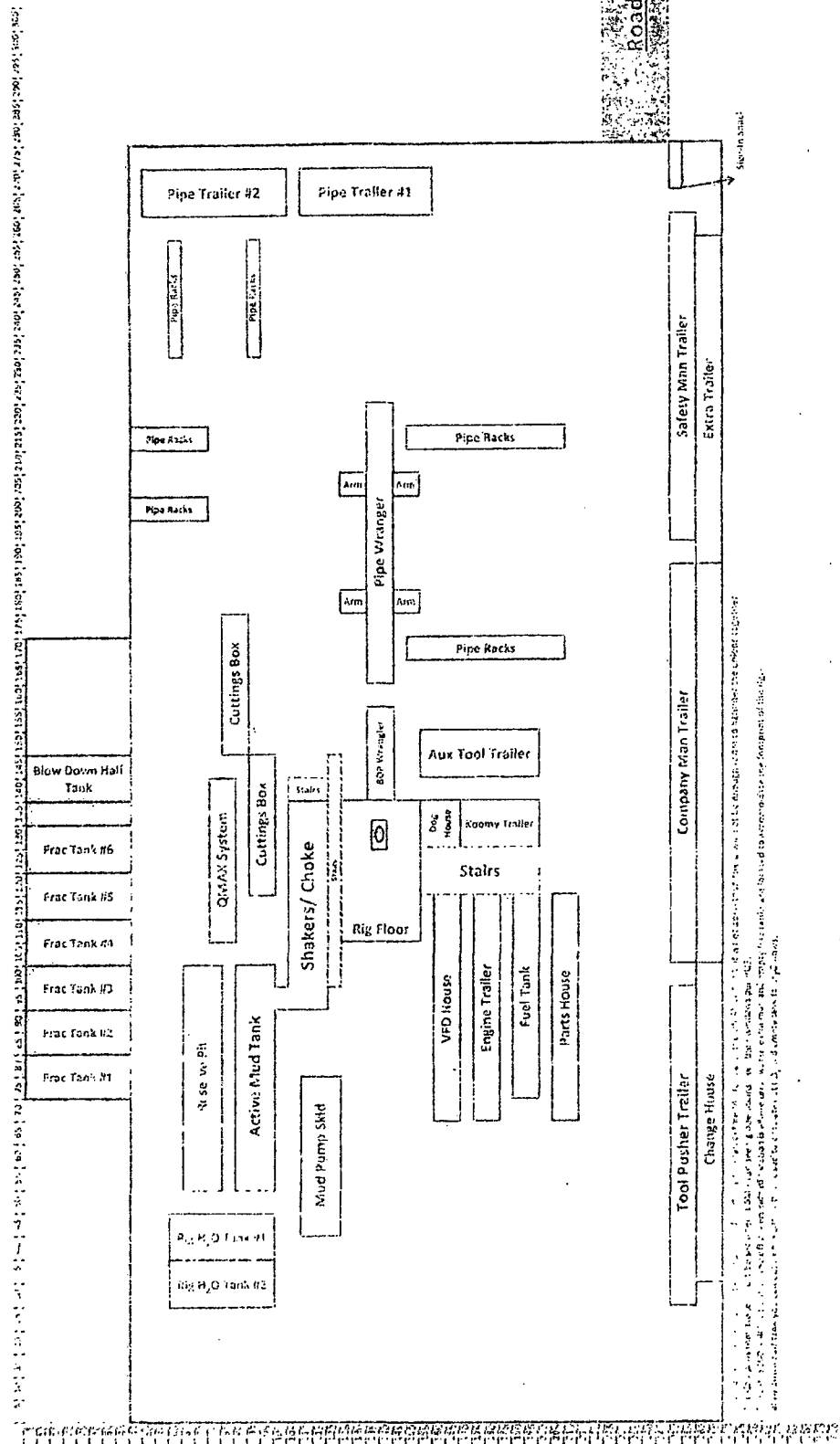
# VICINITY MAP



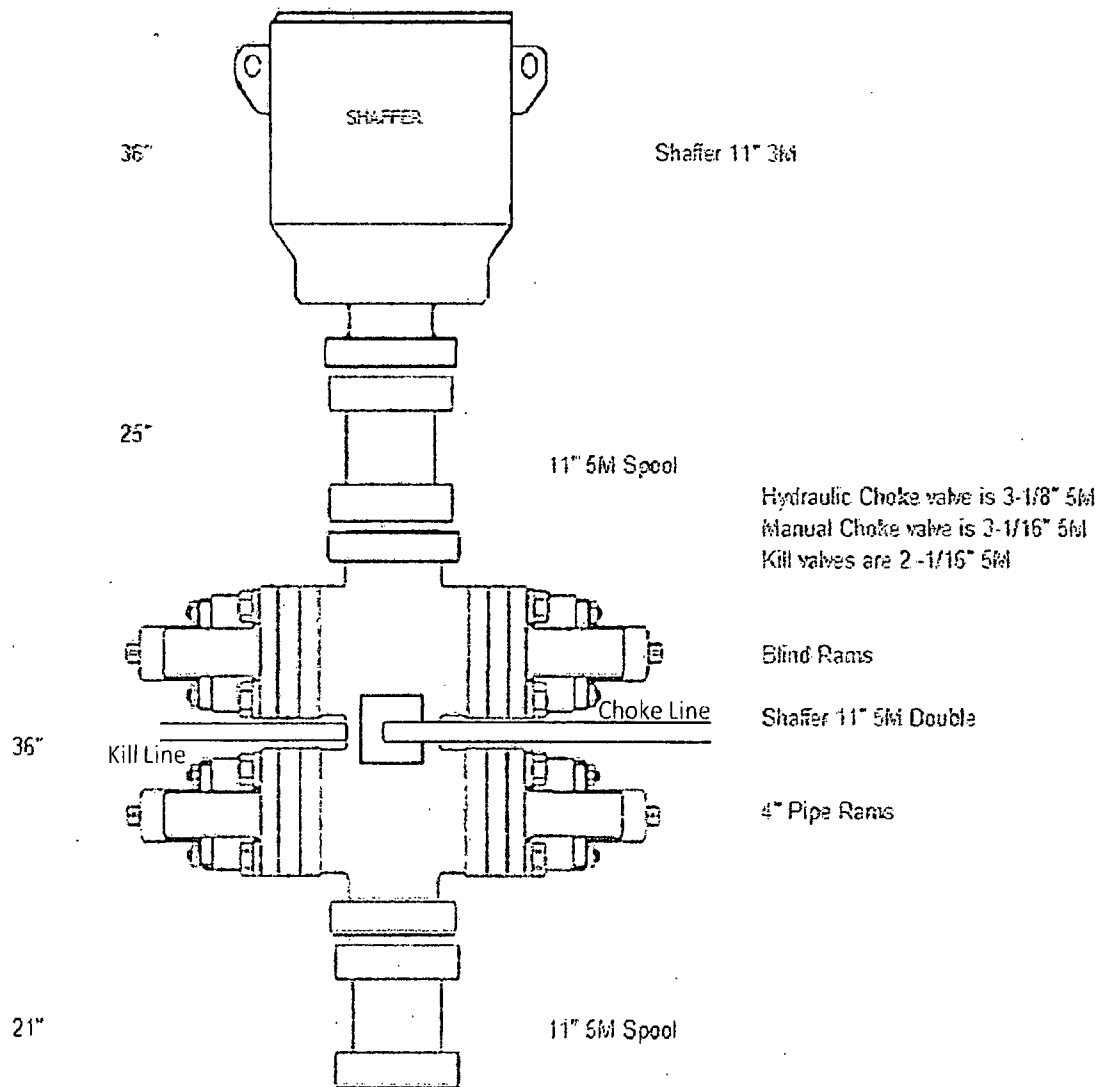
SCALE: 1" = 2 MILES

SEC. 7 TWP. 18-S RGE. 35-E  
 SURVEY N.M.P.M.  
 COUNTY LEA STATE NEW MEXICO  
 DESCRIPTION 540' FNL & 390' FEL  
 ELEVATION 3949'  
 OPERATOR CHEVRON USA INC.  
 LEASE NEW MEXICO "AN" STATE





# H&P 356 Bop Schematic



## Choke Manifold Diagram

