

DISTRICT I
1625 N. French Dr., Hobbs, NM 88240
Phone: (575) 393-6161 Fax: (575) 393-0720

DISTRICT II
811 S. First St., Artesia, NM 88210
Phone: (575) 748-1283 Fax: (575) 748-9720

DISTRICT III
1000 Rio Brazos Road, Aztec, NM 87410
Phone: (505) 334-6178 Fax: (505) 334-6170

DISTRICT IV
1220 S. St. Francis Dr., Santa Fe, NM 87505
Phone: (505) 476-3460 Fax: (505) 476-3462

State of New Mexico
Energy, Minerals & Natural Resources Department
OIL CONSERVATION DIVISION **HOBBS OCD**
1220 South St. Francis Dr.
Santa Fe, New Mexico 87505

Form C-102
Revised August 1, 2011
Submit one copy to appropriate
District Office

AUG 19 2013

☐ AMENDED REPORT

WELL LOCATION AND ACREAGE DEDICATION **RECEIVED**

API Number 30-025 41348	Pool Code 62180	Pool Name VACUUM; GRAYBURG SAN ANDRES
Property Code 29923	Property Name CVU	Well Number 170
OGRID No. 4323	Operator Name CHEVRON USA INC	Elevation 4001'

Surface Location

UL or lot No. L	Section 36	Township 17-S	Range 34-E	Lot Idn	Feet from the 2490	North/South line SOUTH	Feet from the 500	East/West line WEST	County LEA
---------------------------	----------------------	-------------------------	----------------------	---------	------------------------------	----------------------------------	-----------------------------	-------------------------------	----------------------

Bottom Hole Location If Different From Surface

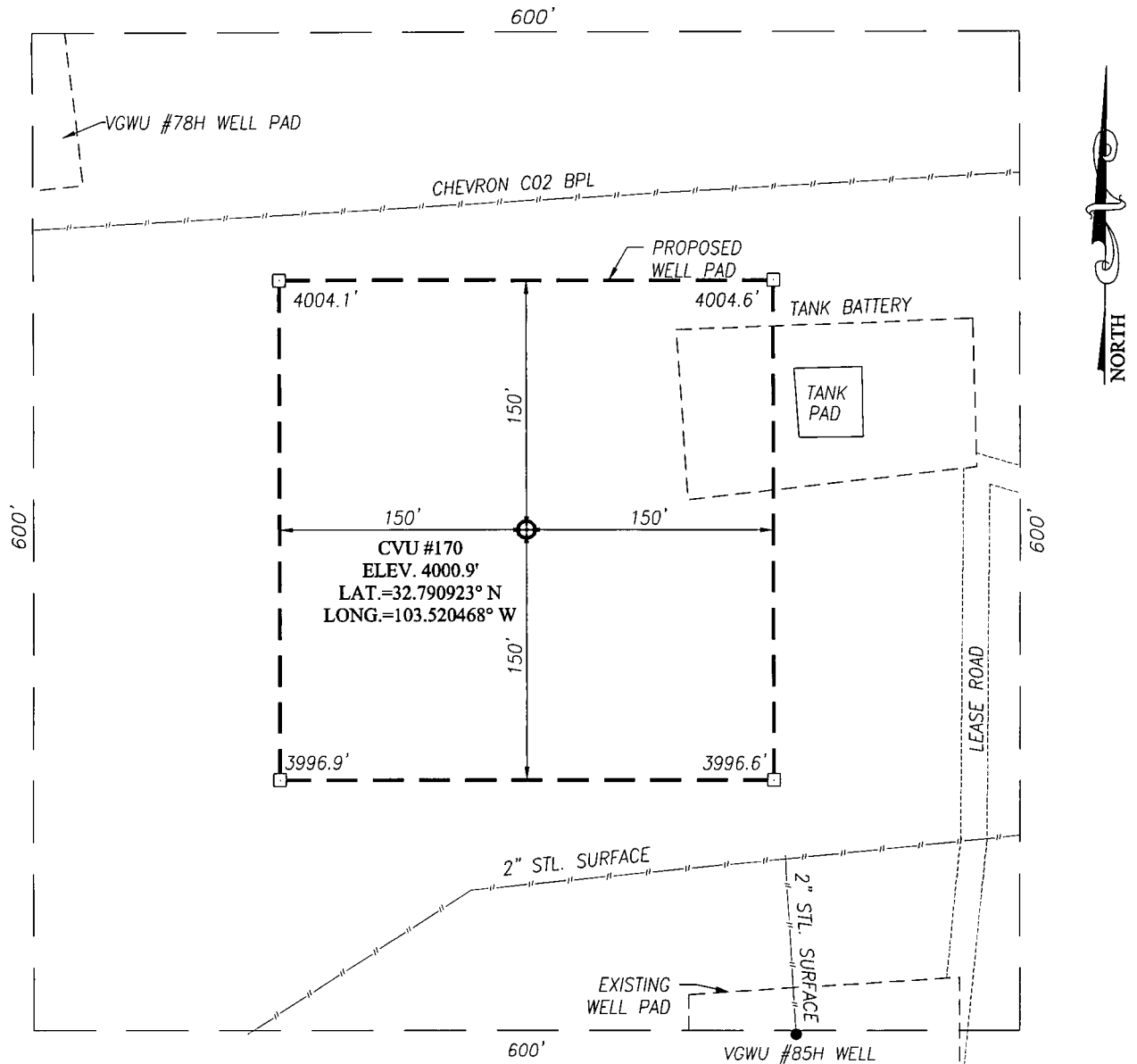
UL or lot No.	Section	Township	Range	Lot Idn	Feet from the	North/South line	Feet from the	East/West line	County
---------------	---------	----------	-------	---------	---------------	------------------	---------------	----------------	--------

Dedicated Acres 40	Joint or Infill	Consolidation Code	Order No.
------------------------------	-----------------	--------------------	-----------

NO ALLOWABLE WILL BE ASSIGNED TO THIS COMPLETION UNTIL ALL INTERESTS HAVE BEEN CONSOLIDATED OR A NON-STANDARD UNIT HAS BEEN APPROVED BY THE DIVISION

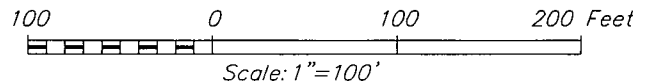
<p>GEODETIC COORDINATES NAD 27 NME</p> <p>SURFACE LOCATION Y=652408.7 N X=749800.3 E</p> <p>LAT.=32.790923° N LONG.=103.520468° W</p>	<p>OPERATOR CERTIFICATION</p> <p>I hereby certify that the information herein is true and complete to the best of my knowledge and belief, and that this organization either owns a working interest or unleased mineral interest in the land including the proposed bottom hole location or has a right to drill this well at this location pursuant to a contract with an owner of such mineral or working interest, or to a voluntary pooling agreement or a compulsory pooling order heretofore entered by the division.</p> <p><i>Denise Pinkerton</i> 8/14/13 Signature Date</p> <p>DENISE PINKERTON Printed Name</p> <p><i>clarkjd@chevron.com</i> E-mail Address</p>
	<p>SURVEYOR CERTIFICATION</p> <p>I hereby certify that the well location shown on this plat was plotted from field notes of actual surveys made by me or under my supervision, and that the same is true and correct to the best of my belief.</p> <p>JULY 26, 2013 Date of Survey</p> <p>Signature of Licensed Professional Surveyor: <i>Ronald J. Eidson</i></p> <p>RONALD J. EIDSON NEW MEXICO REGISTERED SURVEYOR 3239</p> <p>Certification Number: 3239 Surveyor: Ronald J. Eidson ACR: JWSC W.O.: 13.11.0853</p>
	<p>AUG 20 2013</p>
	<p>AUG 20 2013</p>

SECTION 36, TOWNSHIP 17 SOUTH, RANGE 34 EAST, N.M.P.M.
LEA COUNTY **NEW MEXICO**



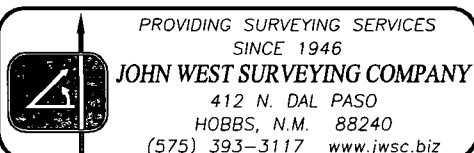
DIRECTIONS TO LOCATION

FROM THE INTERSECTION OF STATE HWY. 238 AND CO. RD. L51 (TEXAS CAMP), GO SOUTH ON STATE HWY. 238 APPROX. 0.4 MILES. TURN RIGHT AND GO WEST APPROX. 0.45 MILES. TURN LEFT AND GO SOUTH APPROX. 0.3 MILES. TURN RIGHT AND GO WEST APPROX. 0.4 MILES. TURN LEFT AND GO SOUTH APPROX. 0.15 MILES. THE LOCATION STAKE IS APPROX. 270 FEET WEST.



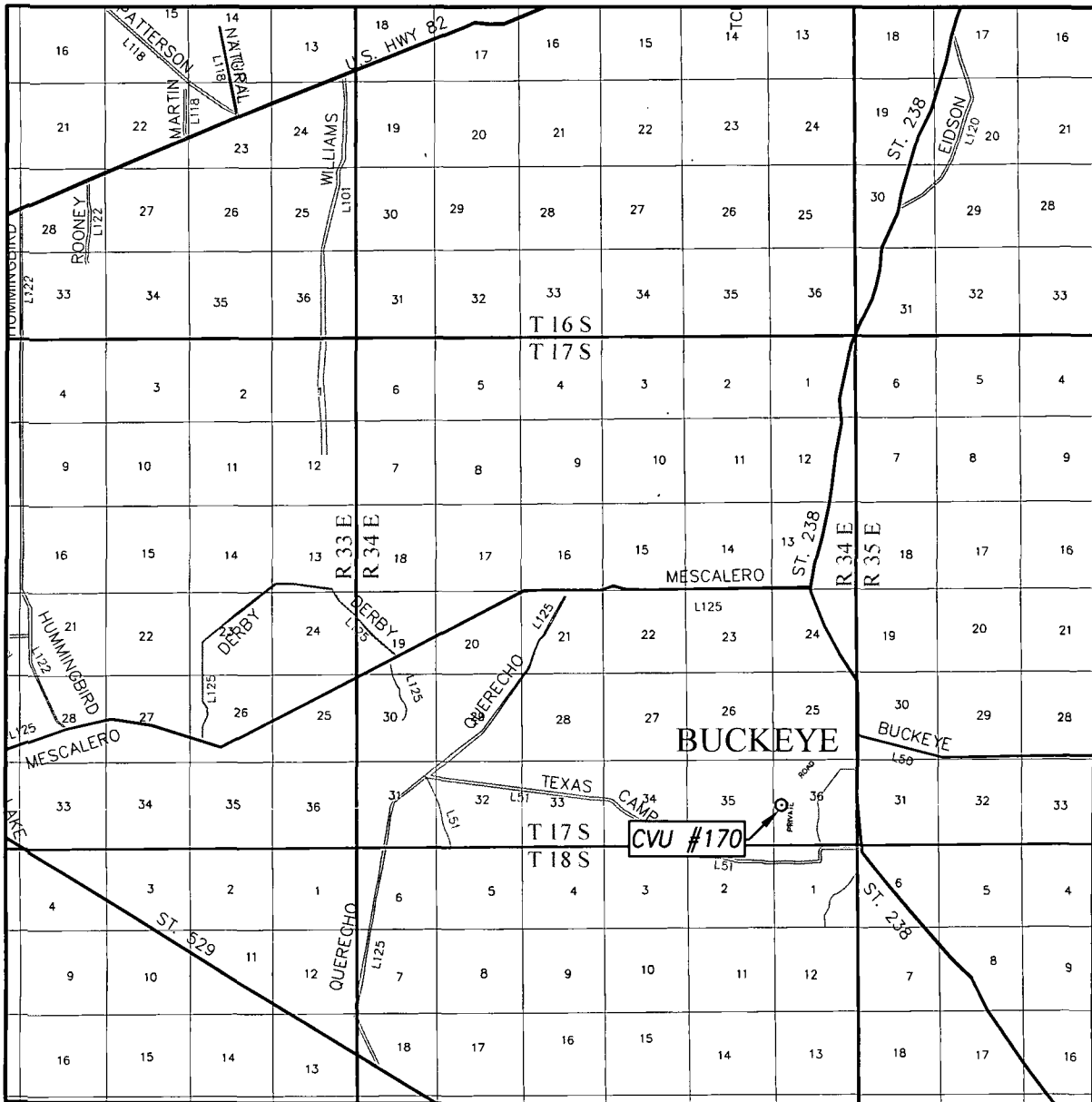
CHEVRON USA INC

CVU #170 WELL
LOCATED 2490 FEET FROM THE SOUTH LINE
AND 500 FEET FROM THE WEST LINE OF SECTION 36,
TOWNSHIP 17 SOUTH, RANGE 34 EAST, N.M.P.M.,
LEA COUNTY, NEW MEXICO



Survey Date: 7/26/13	CAD Date: 7/31/13	Drawn By: ACR
W.O. No.: 13110853	Rev: .	Rel. W.O.: Sheet 1 of 1

VICINITY MAP



SCALE: 1" = 2 MILES

SEC. 36 TWP. 17-S RGE. 34-E

SURVEY N.M.P.M.

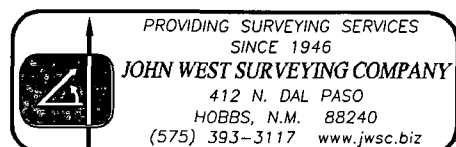
COUNTY LEA STATE NEW MEXICO

DESCRIPTION 2490' FSL & 500' FWL

ELEVATION 4001'

OPERATOR CHEVRON USA INC

LEASE CVU



LOCATION VERIFICATION MAP



SCALE: 1" = 2000'

CONTOUR INTERVAL:
BUCKEYE, N.M. - 5'

SEC. 36 TWP. 17-S RGE. 34-E

SURVEY N.M.P.M.

COUNTY LEA STATE NEW MEXICO

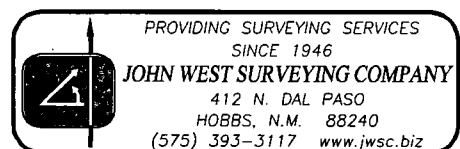
DESCRIPTION 2490' FSL & 500' FWL

ELEVATION 4001'

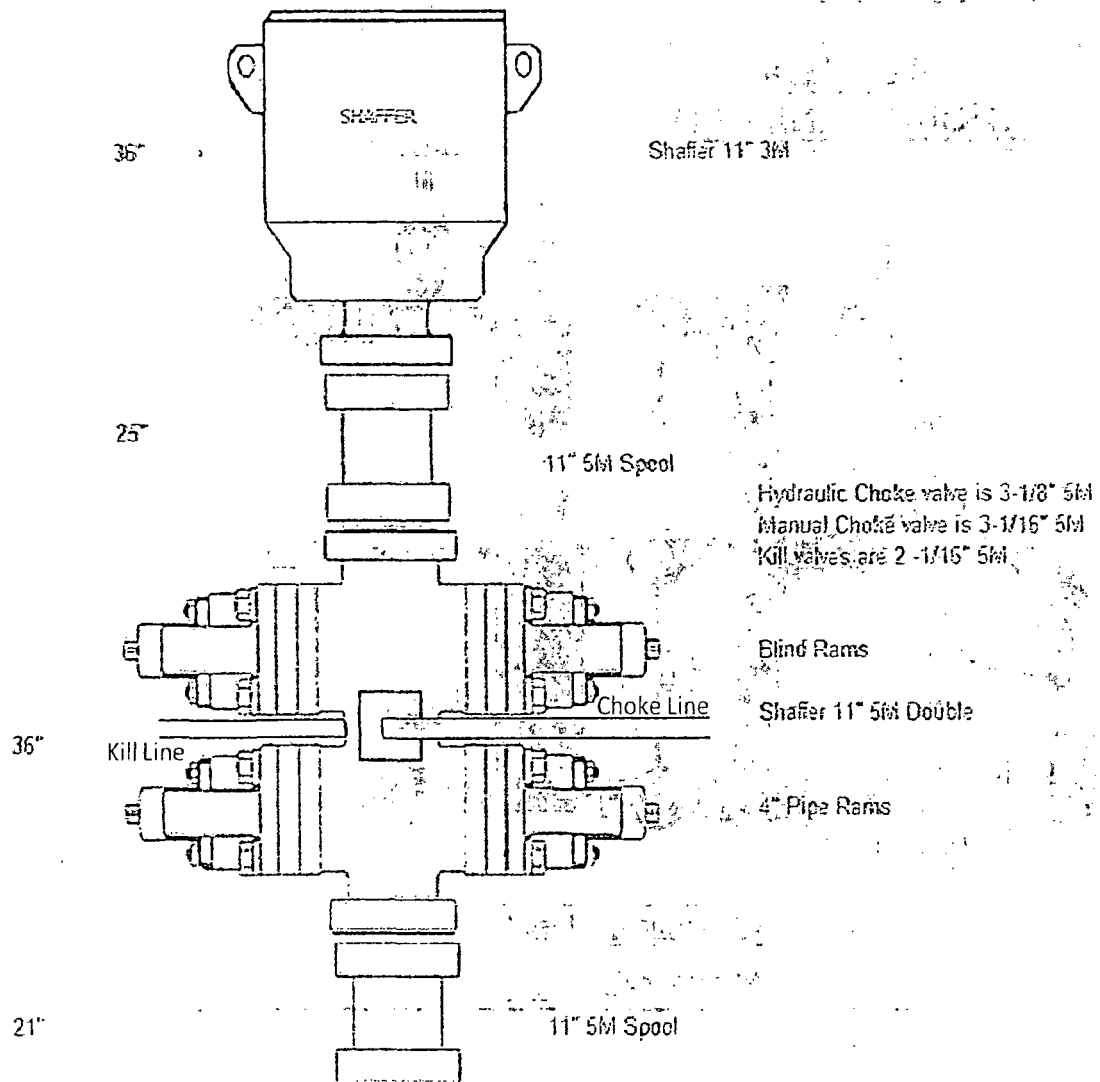
OPERATOR CHEVRON USA INC

LEASE CVU

U.S.G.S. TOPOGRAPHIC MAP
BUCKEYE, N.M.



H&P 356 Bop Schematic



Choke Manifold Diagram

