

Submit 3 Copies To Appropriate District  
Office  
District I  
1625 N. French Dr., Hobbs, NM 87240  
District II  
1301 W. Grand Ave., Artesia, NM 88210  
District III  
1000 Rio Brazos Rd., Aztec, NM 87410  
District IV  
1220 S. St. Francis Dr., Santa Fe, NM  
87505

State of New Mexico  
Energy, Minerals and Natural Resources  
OIL CONSERVATION DIVISION  
1220 South St. Francis Dr.  
Santa Fe, NM 87505

Form C-103  
June 19, 2008

<b>SUNDRY NOTICES AND REPORTS ON WELLS</b> (DO NOT USE THIS FORM FOR PROPOSALS TO DRILL OR TO DEEPEN OR PLUG BACK TO A DIFFERENT RESERVOIR. USE "APPLICATION FOR PERMIT" (FORM C-101) FOR SUCH PROPOSALS.)		WELL API NO. <b>30-025-35585</b>
1. Type of Well: Oil Well <input checked="" type="checkbox"/> Gas Well <input type="checkbox"/> Other <input type="checkbox"/>		5. Indicate Type of Lease STATE <input checked="" type="checkbox"/> FEE <input type="checkbox"/>
2. Name of Operator <b>Energen Resources Corporation</b>		6. State Oil & Gas Lease No.
3. Address of Operator <b>3300 N. A Street, Bldg. 4, Ste. 100, Midland, TX 79705</b>		7. Lease Name or Unit Agreement Name: <b>State "33"</b>
4. Well Location Unit Letter <b>D</b> : <b>330</b> feet from the <b>South</b> line and <b>1000</b> feet from the <b>West</b> line Section <b>33</b> Township <b>15S</b> Range <b>35E</b> NMPM County <b>Lea</b>		8. Well Number <b>19</b>
11. Elevation (Show whether DR, RKB, RT, GR, etc.) <b>3981' GR</b>		9. OGRID Number <b>162928</b>
		10. Pool name or Wildcat <b>Lovington; Strawn West</b>

12. Check Appropriate Box to Indicate Nature of Notice, Report, or Other Data

NOTICE OF INTENTION TO:

PERFORM REMEDIAL WORK ☐ PLUG AND ABANDON ☒  
TEMPORARILY ABANDON ☐ CHANGE PLANS ☐  
PULL OR ALTER CASING ☐ MULTIPLE COMPL ☐  
DOWNHOLE COMMINGLE ☐

OTHER: ☐

SUBSEQUENT REPORT OF:

REMEDIAL WORK ☐ ALTERING CASING ☐  
COMMENCE DRILLING OPNS. ☐ P AND A ☐  
CASING/CEMENT JOB ☐

OTHER: ☐

13. Describe proposed or completed operations. (Clearly state all pertinent details, and give pertinent dates, including estimated date of starting any proposed work). SEE RULE 1103. For Multiple Completions: Attach wellbore diagram of proposed completion or recompletion.

See attached procedure to plug

OIL CONSERVATION DIVISION - Hobbs office Must Be Notified  
24 hours prior to the beginning of Plugging Operations.

Spud Date:

Rig Release Date:

I hereby certify that the information above is true and complete to the best of my knowledge and belief.

SIGNATURE Jenifer Sorley TITLE Regulatory Analyst DATE 8/1/13  
Type or print name Jenifer Sorley E-mail address: jenifer.sorley@energen.com PHONE 432-818-1732

For State Use Only

APPROVED BY [Signature] TITLE DIST MGR DATE 8-20-2013  
Conditions of Approval (if any):

AUG 21 2013

# ENERGEN RESOURCES CORPORATION

## State 33-19 (Wolfcamp)

Formerly West Lovington Strawn Unit #19ST

Lea County, NM

GL Elevation: 3994'

KB Elevation: 4011'

Location: 330' FNL X 1000' FWL,

Sec 33, T-15-S, R-35-E

Spud: 07/20/2001

API: 30-025-35585

### Surface Casing:

13-3/8" 48#, H-40 ST&C

@ 402' in 17-1/2" hole

Cement to surface

w/ 300 sx Class "C" + 4% gel + 2%

CaCl<sub>2</sub> & 1/4# of Cello Flake/sx,

Tailed with 100 Sx Class "C" +  
2% CaCl<sub>2</sub> & 1/4# of Cello Flake/sx,

Circulated 106 sx to pit

402'

Status: Shut-In  
4/25/2006

### Intermediate Casing:

8-5/8" 32#, K-55 & HCK-55 @ 4818'

Cement to surface with

1,200 sx 50/50 Poz "C" + 10% Gel,

5% Salt, 3# Gilsonite, 1/4#/sack

Tailed w/ 200 sx Class "C" + 1% CaCl<sub>2</sub>,

Gilsonite, 1/4#sack Cello Flakes

Circulated 135 sx to pit

4818'

200 sack Kick Plug 7598-7390

50 sack cmt plug set @ 8524

CIBP @ 11,550' w/2 sx cmt

Perf: 11,614-11,624' & 11,582-11,600'

Cmt Retainer @ 11,650'

Strawn Perfs: 11,662'-11,682' Sqz'd w/100 sx

### Production Casing:

5 1/2" HCL-80 & L-80 17.00# set @ 11,908'

w/ 1000 sx 50/50 Poz/ "H" + 1# salt,

2% gel & 1/4# of Cello Flake/sack

TOC: 8462' CBL

Cut & Removed to 8400' (5/23/2002)

### New Production Casing:

5 1/2" HCL-80 & L-80 17.00# LT&C R-3 set @ 12,123'

Cement w/ 500 sx Class H w/additives

Tailed w/1000' sx Batch Mix 50/50 Poz "H" w/additives

TOC: Est. 4500'

### Formation Tops

Yates: 3,055'

7 Rivers: 3,195'

Queen: 3,885'

San Andres: 4,590'

Glorieta: 5,195'

Tubb: 7,405'

Abo: 8,145'

Wolfcamp: 10,062'

Strawn: 11,582'

KOP: 7390'

CIBP set @ 10,732'

CIBP set @ 10,770'

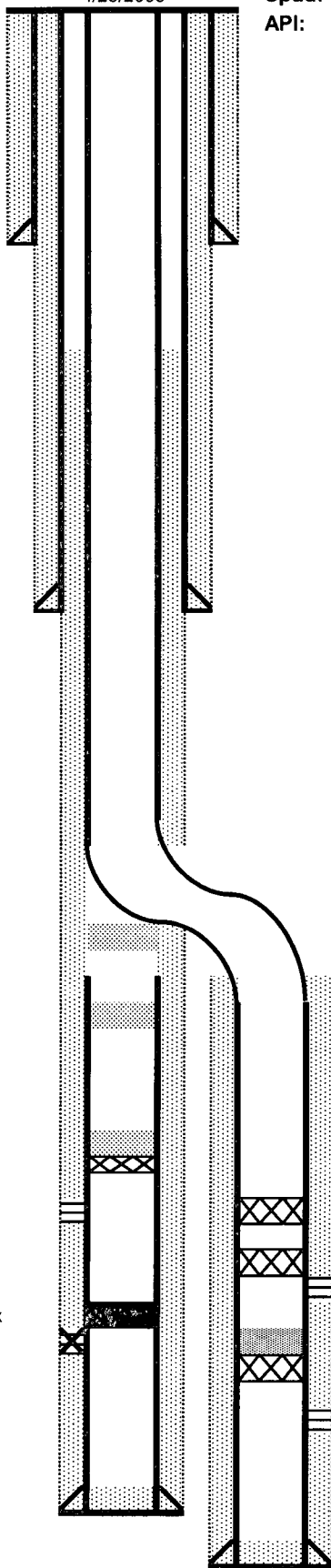
Wolfcamp Perfs: 10,774-10,784 (3 JSPF 120 degree phasing, 12/2003)

CIBP set @ 11,776' w/3 sx cmt

Perf: 11,846-11,868' & 11,877-11,887'

PBD: 12,075'

TD: 12,125' MD



# ENERGEN RESOURCES CORPORATION

State 33-19 (Wolfcamp)  
Formerly West Lovington Strawn Unit #19ST  
Lea County, NM

GL Elevation: 3994'  
KB Elevation: 4011'  
Location: 330' FNL X 1000' FWL,  
Sec 33, T-15-S, R-35-E

## Surface Casing:

13-3/8" 48#, H-40 ST&C  
@ 402' in 17-1/2" hole  
Cement to surface  
w/ 300 sx Class "C" + 4% gel + 2%  
CaCl<sub>2</sub> & 1/4# of Cello Flake/sx,  
Tailed with 100 Sx Class "C" +  
2% CaCl<sub>2</sub> & 1/4# of Cello Flake/sx,  
Circulated 106 sx to pit

## Intermediate Casing:

8-5/8" 32#, K-55 & HCK-55 @ 4818'  
Cement to surface with  
1,200 sx 50/50 Poz "C" + 10% Gel,  
5% Salt, 3# Gilsonite, 1/4#/sack  
Tailed w/ 200 sx Class "C" + 1% CaCl<sub>2</sub>,  
Gilsonite, 1/4#sack Cello Flakes  
Circulated 135 sx to pit

CIBP @ 11,550' w/2 sx cmt  
Perf: 11,614-11,624' & 11,582-11,600'  
Cmt Retainer @ 11,650'  
Strawn Perfs: 11,662'-11,682' Sqz'd w/100 sx

## Production Casing:

5 1/2" HCL-80 & L-80 17.00# set @ 11,908'  
w/ 1000 sx 50/50 Poz/ "H" + 1# salt,  
2% gel & 1/4# of Cello Flake/sack  
TOC: 8462' CBL

Cut & Removed to 8400' (5/23/2002)

## New Production Casing:

5 1/2" HCL-80 & L-80 17.00# LT&C R-3 set @ 12,123'  
Cement w/ 500 sx Class H w/additives  
Tailed w/1000' sx Batch Mix 50/50 Poz "H" w/additives  
TOC: Est. 4500'

Spud: 07/20/2001

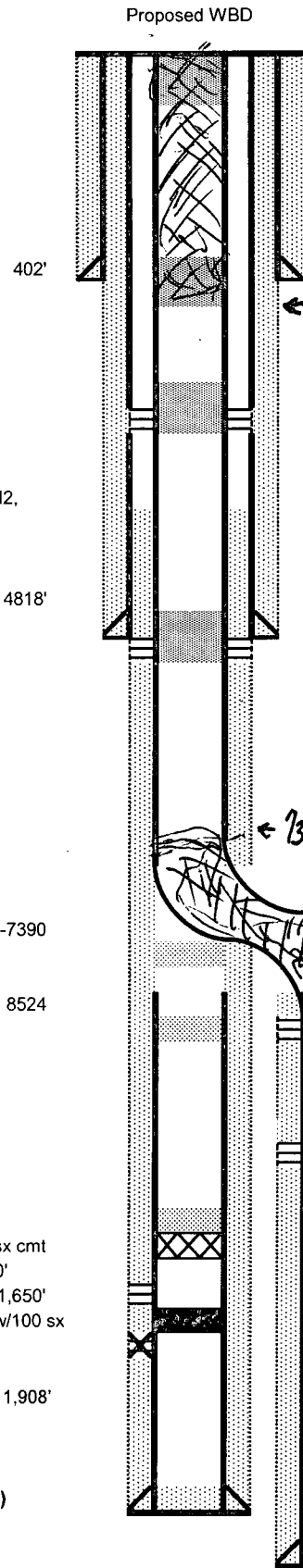
API: 30-025-35585

~~12 Sack cement plug from 100'~~

~~Surface~~

## Formation Tops

Yates: 3,055'  
7 Rivers: 3,195'  
Queen: 3,885'  
San Andres: 4,590'  
Glorieta: 5,195'  
Tubb: 7,405'  
Abo: 8,145'  
Wolfcamp: 10,062'  
Strawn: 11,582'



Perforate squeeze holes @ 1,900'. Squeeze and displace cement plug  
from 1,900'-1,800' with 35 sxs. WOC-TAG

PERF & SQ 25 sx cmt @ 2900 WOC-TAG

4875'  
Perforate squeeze holes @ 4,850'. Squeeze and displace cement plug  
from 4,850'-4,750' with 35 sxs. WOC-TAG

7305  
KOP: 7390'  
Perforate squeeze holes @ 7,405'. Squeeze and displace cement plug  
from 7,405'-7,305' with 35 sxs. WOC-TAG

Perforate squeeze holes @ 10,062'. Squeeze and displace cement plug from  
10,062'-9,962' with 35 sxs. WOC-TAG

35 sack cement plug on CIBP from 10,732'-10,440'.  
CIBP set @ 10,732' ✓ CIRC WELL W/MLF

CIBP set @ 10,770'

Wolfcamp Perfs: 10,774-10,784 (3 JSPF 120 degree phasing, 12/2003)

CIBP set @ 11,776' w/3 sx cmt

Perf: 11,846-11,868' & 11,877-11,887'

PBD: 12,075'

TD: 12,125' MD

**State -33-19**

Lea County, NM

330' FNL and 1000' FWL

Sec 33, T15S, R35E

API — 30-025-35585

Spud Date: 7/20/2001

**Plug & Abandon Procedure**

- 1** MIRU Well Service Unit. NDWH, NU BOP.
- 2** RIH and tag CIBP @ 10,732'. Spot 35 sxs cement on CIBP.
- 3** Perforate at 10,062'. Pump 35 sxs cement plug and displace to 9,962', WOC.
- 4** Perforate at 7,405'. Pump 35 sxs cement plug and displace to 7,305', WOC.
- 5** Perforate at 4,850'. Pump 35 sxs cement plug and displace to 4,750', WOC & Tag.
- 6** Perforate at 1,900'. Pump 35 sxs cement plug and displace to 1,800', WOC.
- 7** Spot 100' cement plug from 450'-350'. WOC & Tag.
- 8** Spot 12 sxs from 100' to surface.
- 9** Cut off all casing strings at base of cellar or 3' below restored ground level.
- 10** Cover wellbore with metal plate welded in place or with cement cap.
- 11** Erect capped abandonment marker inscribed with well information.
- 12** Cut off dead man anchors and fill in cellar.
- 13** Clean and restore location to natural condition and fulfill any and all regulatory

Prepared by: Brian Hillger

8/1/2013