

*Surface Use Plan*  
*COG Operating, LLC*  
*Tusk Federal #4H*  
*SL: 250' FSL & 2080' FEL      UL O*  
*Section 25, T19S, R34E*  
*BHL: 330' FNL & 1980' FEL      UL B*  
*Section 25, T19S, R34E*  
*Lea County, New Mexico*

3D-025-41358

## **SURFACE USE AND OPERATING PLAN**

### **1. Existing & Proposed Access Roads**

- A. The well site survey and elevation plat for the proposed well is attached with this application. It was staked by Harcrow Surveying, Artesia, NM.
- B. All roads to the location are shown on the Access Road Map. The existing lease roads are illustrated and are adequate for travel during drilling and production operations. Upgrading existing roads prior to drilling the well will be done where necessary. The road route to the well site is depicted in the Access Road Map.
- C. Directions to location: See attached 600' x 600' well pad diagram.
- D. Routine grading and maintenance of existing roads will be conducted as necessary to maintain their condition as long as any operations continue on this lease. Roads will be maintained according to specifications in section 2A of this Surface Use and Operating Plan.

### **2. Proposed Access Road:**

The Elevation Plat shows that 943' of new access road will be required for this location. If any road is required it will be constructed as follows:

- A. The maximum width of the running surface will be 14'. The road will be crowned, ditched and constructed of 6" rolled and compacted caliche. Ditches will be at 3:1 slope and 4 feet wide. Water will be diverted where necessary to avoid ponding, prevent erosion, maintain good drainage, and to be consistent with local drainage patterns.
- B. The average grade will be less than 1%.
- C. No turnouts are planned.
- D. A cattleguard is proposed as indicated on the Access Road Map. No culverts, gates, or low water crossings are necessary.
- E. Surfacing material will consist of native caliche. Caliche will be obtained from the actual well site if available. If not available onsite, caliche will be hauled from the nearest BLM approved caliche pit.

**AUG 26 2013**

### **3. Location of Existing Well:**

The One-Mile Radius Map shows existing wells within a one-mile radius of surface hole location and the bottom hole location.

### **4. Location of Existing and/or Proposed Facilities:**

- A. COG Operating LLC does operate a production facility on this lease.
- B. If the well is productive, contemplated facilities will be as follows:
  - 1) Production will be sent to the Tusk Federal #2H facility.
  - 2) All flow lines and piping will be installed according to API specifications.
  - 3) A map showing the proposed route for the flow line from the Tusk Federal #4H to the Tusk Federal #2H facility is attached as Exhibit 4. It is proposed to lay a 2 7/8" J-55 steel surface line approximately 7395' in length that follows the proposed access road (shown in pink) to the existing facility. Anticipated pressure is less than 125 psi. The line will carry produced water, oil and gas to the existing facility.
  - 4) Should production or ownership require a separate production facility for the Tusk Federal #4H, it would be constructed as shown on Exhibit 3.
  - 5) Any additional caliche will be obtained from the actual well site. If caliche does not exist or is not plentiful from the well site, the caliche will be hauled from a BLM approved caliche pit. Any additional construction materials will be purchased from contractors.
  - 6) It will be necessary to run electric power if this well is productive. Power will be provided by Xcel Energy and they will submit a separate plan and ROW for service to the well location.
  - 7) If the well is productive, rehabilitation plans will include the following:
    - The original topsoil from the well site will be returned to the location, and the site will be re-contoured as close as possible to the original site.

*Surface Use Plan*  
*COG Operating, LLC*  
*Tusk Federal #4H*  
*SL: 250' FSL & 2080' FEL      UL O*  
*Section 25, T19S, R34E*  
*BHL: 330' FNL & 1980' FEL      UL B*  
*Section 25, T19S, R34E*  
*Lea County, New Mexico*

**HOBBS OCD**

**AUG 20 2013**

**RECEIVED**

---

**5. Location and Type of Water Supply:**

The well will be drilled with combination brine and fresh water mud system as outlined in the drilling program. The water will be obtained from commercial water stations in the area and hauled to location by transport truck over the existing and proposed access roads shown in the Access Road Map. If a commercial fresh water source is nearby, fast line may be laid along existing road ROW's and fresh water pumped to the well. No water well will be drilled on the location.

**6. Source of Construction Materials and Location "Turn-Over" Procedure:**

Obtaining caliche: One primary way of obtaining caliche to build locations and roads will be by "turning over" the location. This means, caliche will be obtained from the actual well site. A caliche permit will be obtained from BLM prior to obtaining caliche. 2400 cubic yards is the maximum amount of caliche needed for pad and roads. Amount will vary for each pad. The procedure below has been approved by BLM personnel:

- a. The top 6 inches of topsoil is pushed off and stockpiled along the side of the location.
- b. An approximate 160' X 160' area is used within the proposed well site to remove caliche.
- c. Subsoil is removed and stockpiled within the surveyed well pad.
- d. When caliche is found, material will be stock piled within the pad site to build the location and road.
- e. Then subsoil is pushed back in the hole and caliche is spread accordingly across entire location and road.
- f. Once well is drilled, the stock piled top soil will be used for interim reclamation and spread along areas where caliche is picked up and the location size is reduced.
- g. Neither caliche, nor subsoil will be stock piled outside of the well pad. Topsoil will be stockpiled along the edge of the pad as depicted in the Well Site Layout or survey plat.

In the event that no caliche is found onsite, caliche will be hauled in from a BLM approved caliche pit or other established mineral pit. A BLM mineral material permit will be acquired prior to obtaining any mineral material from BLM pits or land.

*Surface Use Plan*  
*COG Operating, LLC*  
*Tusk Federal #4H*  
*SL: 250' FSL & 2080' FEL      UL O*  
*Section 25, T19S, R34E*  
*BHL: 330' FNL & 1980' FEL      UL B*  
*Section 25, T19S, R34E*  
*Lea County, New Mexico*

---

**7. Methods of Handling Water Disposal:**

- A. The well will be drilled utilizing a closed loop mud system. Drill cuttings will be held in roll-off style mud boxes and taken to an NMOCD approved disposal site.
- B. Drilling fluids will be contained in steel mud pits.
- C. Water produced from the well during completion will be held temporarily in steel tanks and then taken to an NMOCD approved commercial disposal facility.
- D. Garbage and trash produced during drilling or completion operations will be collected in a trash bin and hauled to an approved landfill. No toxic waste or hazardous chemicals will be produced by this operation.
- E. Human waste and grey water will need to be properly contained and disposed of. Proper disposal and elimination of waste and grey water may include but are not limited to portable septic systems and/or portable waste gathering systems (i.e. portable toilets).
- F. After the rig is moved out and the well is either completed or abandoned, all waste materials will be cleaned up within 30 days. In the event of a dry hole only a dry hole marker will remain.

**8. Ancillary Facilities:**

No airstrip, campsite or other facilities will be built as a result of the operation on this well.

**9. Well Site Layout:**

- A. The drill pad layout, with elevations staked by Harcrow Surveying, is shown in the Elevation Plat. Dimensions of the pad and pits are shown on the Rig Layout. V door direction is East. Topsoil, if available, will be stockpiled per BLM specifications. Because the pad is almost level no major cuts will be required.
- B. The Rig Layout Closed-Loop exhibit shows the proposed orientation of closed loop system and access road. No permanent living facilities are planned, but a temporary foreman/toolpusher's trailer will be on location during the drilling operations.

*Surface Use Plan*  
*COG Operating, LLC*  
*Tusk Federal #4H*  
*SL: 250' FSL & 2080' FEL      UL O*  
*Section 25, T19S, R34E*  
*BHL: 330' FNL & 1980' FEL      UL B*  
*Section 25, T19S, R34E*  
*Lea County, New Mexico*

---

#### **10. Plans for Restoration of the Surface:**

- A. Interim Reclamation will take place after the well has been completed. The pad will be downsized by reclaiming the areas not needed for production operations. The portions of the pad that are not needed for production operations will be re-contoured to its original state as much as possible. The caliche that is removed will be reused to either build another pad site or for road repairs within the lease. The stockpiled topsoil will then be spread out reclaimed area and reseeded with a BLM approved seed mixture. In the event that the well must be worked over or maintained, it may be necessary to drive, park, and/or operate machinery on reclaimed land. This area will be repaired or reclaimed after work is complete.
- B. Final Reclamation: Upon plugging and abandoning the well all caliche for well pad and lease road will be removed and surface will be recountoured to reflect its surroundings as much as possible. Caliche will be recycled for road repair or reused for another well pad within the lease. If any topsoil remains, it will be spread out and the area will be reseeded with a BLM approved mixture and re-vegetated as per BLM orders.

#### **11.Surface Ownership:**

- A. The surface is owned by the U.S. Government and is administered by the Bureau of Land Management. The surface is multiple uses with the primary uses of the region for grazing of livestock and the production of oil and gas.
- B. The surface tenant is Snyder Ranches, Inc., PO Box 2158, Hobbs, NM 88240.
- C. The proposed road routes and surface location will be restored as directed by the BLM

#### **12.Other Information:**

- A. The area around the well site is grassland and the topsoil is sandy. The vegetation is moderately sparse with native prairie grasses, some mesquite and shinnery oak. No wildlife was observed but it is likely that mule deer, rabbits, coyotes and rodents traverse the area.
- B. There is no permanent or live water in the immediate area.
- C. There are no dwellings within 2 miles of this location.

*Surface Use Plan*  
*COG Operating, LLC*  
*Tusk Federal #4H*  
*SL: 250' FSL & 2080' FEL      UL O*  
*Section 25, T19S, R34E*  
*BHL: 330' FNL & 1980' FEL      UL B*  
*Section 25, T19S, R34E*  
*Lea County, New Mexico*

---

- D.      If needed, a Cultural Resources Examination is being prepared by Southern New Mexico Archaeological Services, Inc. P.O. Box 1, Bent New Mexico, 88314, phone # 505-671-4797 and the results will be forwarded to your office in the near future. Otherwise, **COG will be participating in the Permian Basin MOA Program.**

**13.      Bond Coverage:**

Bond Coverage is Statewide Bonds # NMB000215 and NMB000740.

*Surface Use Plan*  
*COG Operating, LLC*  
*Tusk Federal #4H*  
*SL: 250' FSL & 2080' FEL      UL O*  
*Section 25, T19S, R34E*  
*BHL: 330' FNL & 1980' FEL      UL B*  
*Section 25, T19S, R34E*  
*Lea County, New Mexico*

---

**14. Lessee's and Operator's Representative:**

The COG Operating LLC representative responsible for assuring compliance with the surface use plan is as follows:

Sheryl Baker  
Drilling Superintendent  
COG Operating LLC  
2208 West Main Street  
Artesia, NM 88210  
Phone    575-748-6940 (office)  
            432-934-1873 (cell)

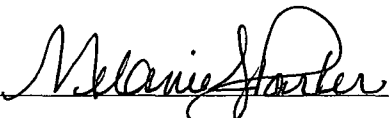
Ray Peterson  
Drilling Manager  
COG Operating LLC  
One Concho Center  
600 West Illinois Ave.  
Midland, TX 79701  
Phone    432-685-4304 (office)  
            432-818-2254 (business)

*Surface Use Plan*  
*COG Operating, LLC*  
*Tusk Federal #4H*  
*SL: 250' FSL & 2080' FEL      UL O*  
*Section 25, T19S, R34E*  
*BHL: 330' FNL & 1980' FEL      UL B*  
*Section 25, T19S, R34E*  
*Lea County, New Mexico*

---

### **OPERATOR CERTIFICATION**

I hereby certify that I, or persons under my direct supervision, have inspected the drill site and access road proposed herein; that I am familiar with the conditions that presently exist; that I have full knowledge of State and Federal laws applicable to this operation; that the statements made in this APD package are, to the best of my knowledge, true and correct; and that the work associated with the operations proposed herein will be performed in conformity with this APD package and the terms and conditions under which it is approved. I also certify that I, or COG Operating, LLC, am responsible for the operations conducted under this application. These statements are subject to the provisions of 18 U.S.C. 1001 for the filing of false statements. Executed this 16<sup>th</sup> day of July, 2013.

Signed: 

Printed Name: Melanie J. Parker

Position: Regulatory Coordinator

Address: 2208 W. Main Street, Artesia, NM 88210

Telephone: (575) 748-6940

Field Representative (if not above signatory): Rand French

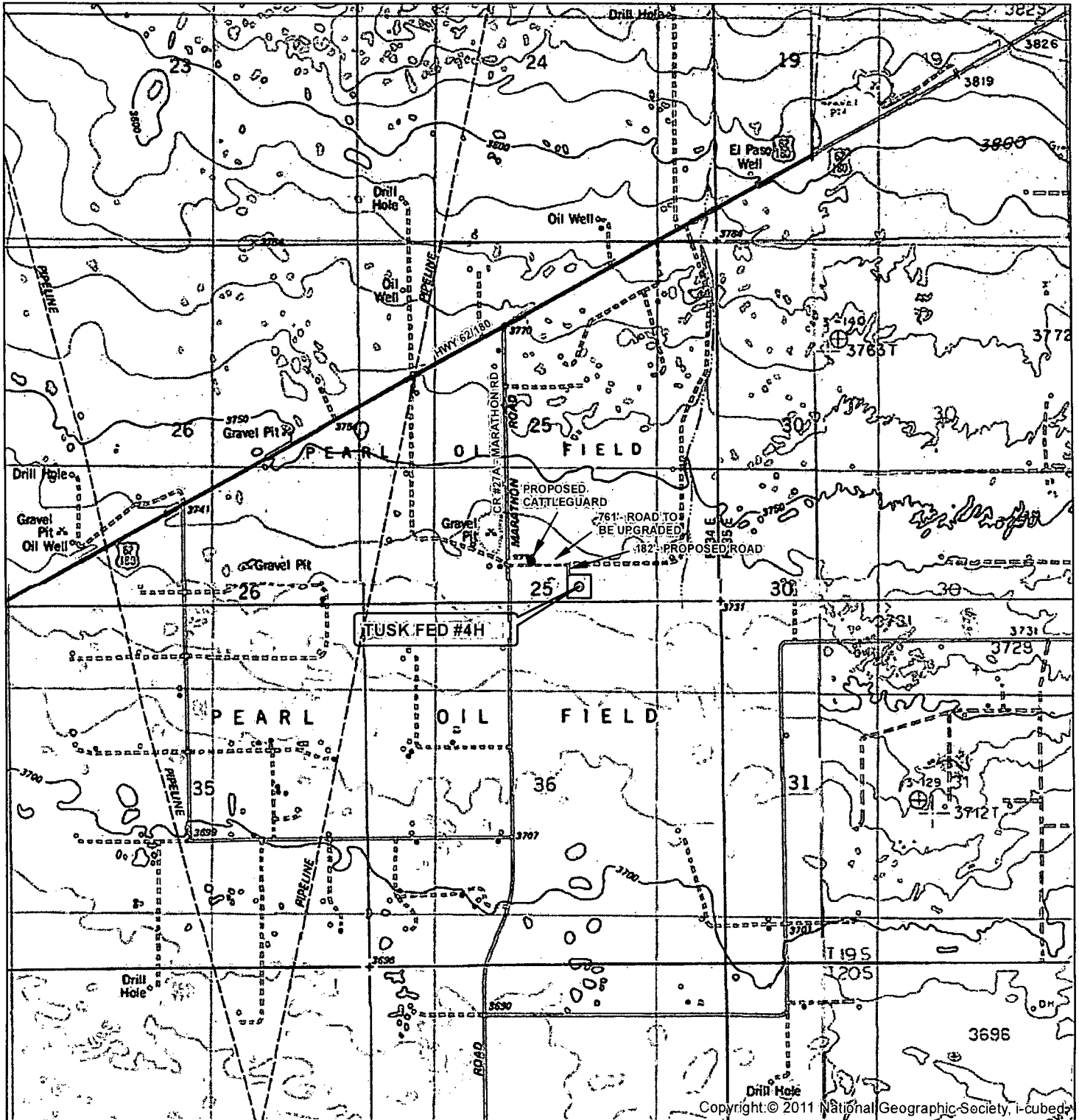
E-mail: [mparker@concho.com](mailto:mparker@concho.com)





# EXHIBIT 2

## LOCATION VERIFICATION MAP



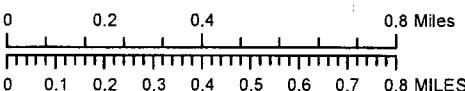
Copyright © 2011 National Geographic Society, I-cubed

SEC. 25, TWP. 19 S, RGE. 34 E  
 SURVEY: N.M.P.M  
 COUNTY: LEA STATE: NEW MEXICO  
 DESCRIPTION: TUSK FED #4H  
 250' FSL & 2080' FEL

ELEVATION: 3736.0'  
 OPERATOR: COG OPERATING, LLC  
 LEASE: TUSK 25 FED

W.O. # 13-175

1 IN = 2,000 FT



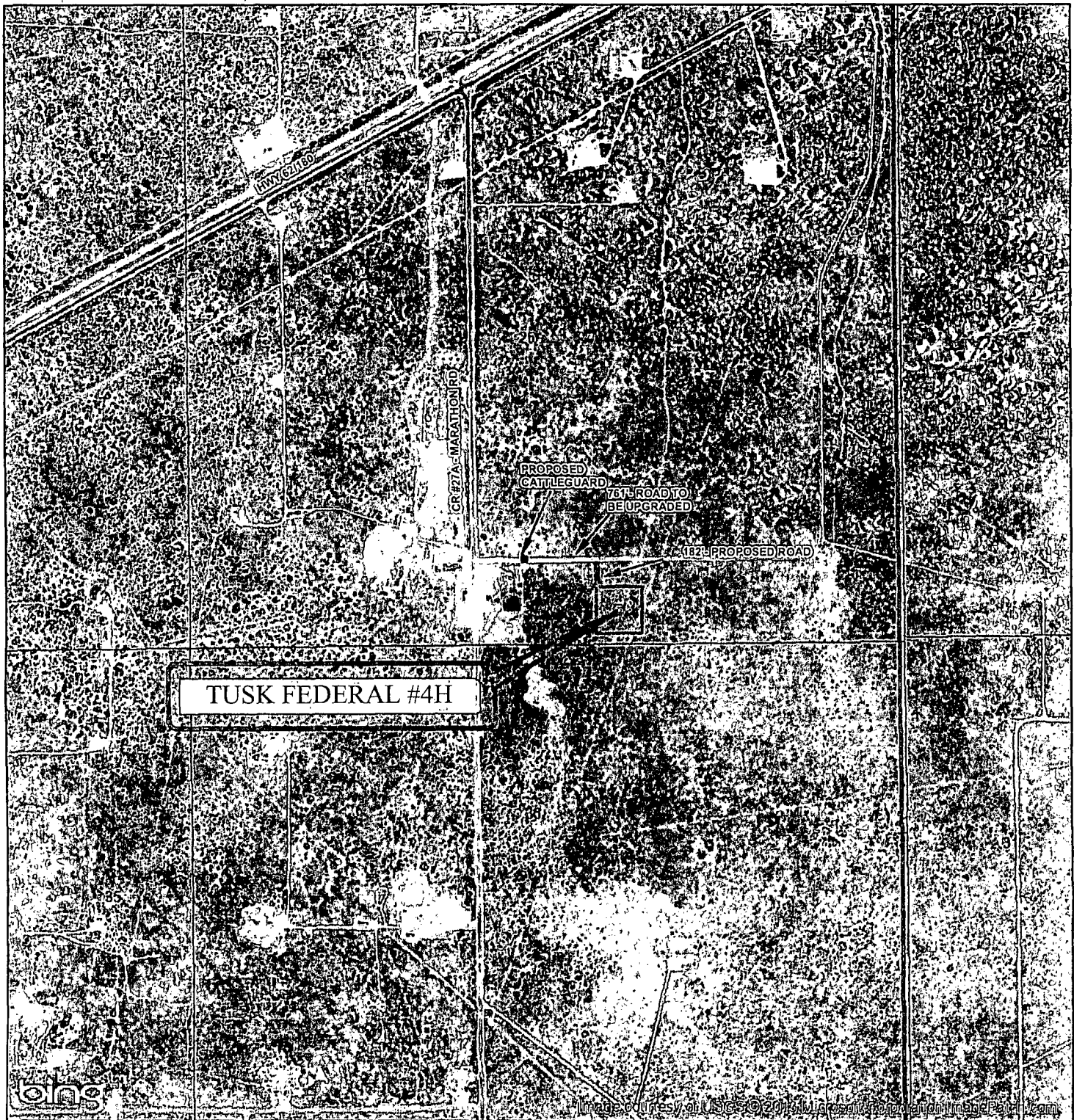
- WELL
- WELL PAD
- PROPOSED ROAD
- TWO TRACK ROAD

HARCROW SURVEYING, LLC  
 1107 WATSON, ARTESIA N.M. 88210  
 PH: (575) 513-2570 FAX: (575) 746-2158  
 chad\_harcrow77@yahoo.com



MAP DATE: 4/24/2013

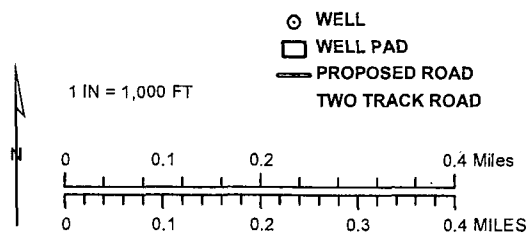
# ACCESS ROAD MAP



SEC. 25, TWP. 19 S, RGE. 34 E  
 SURVEY: N.M.P.M  
 COUNTY: LEA STATE: NEW MEXICO  
 DESCRIPTION: TUSK FED #4H  
 250' FSL & 2080' FEL

ELEVATION: 3736.0'  
 OPERATOR: COG OPERATING, LLC  
 LEASE: TUSK 25 FED

W.O. # 13-175

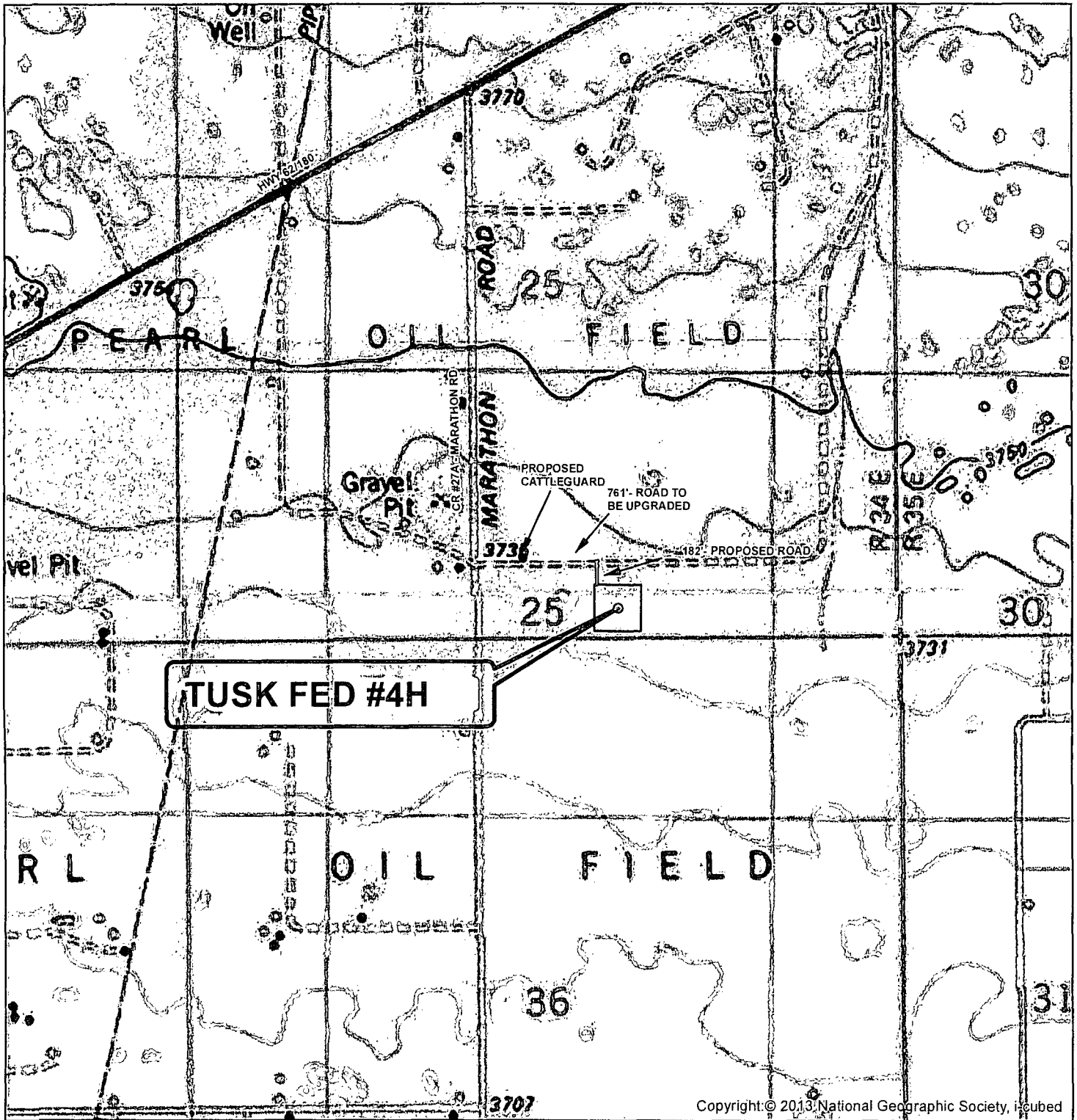


HARCROW SURVEYING, LLC  
 1107 WATSON, ARTESIA N.M. 88210  
 PH: (575) 513-2570 FAX: (575) 746-2158  
 chad\_harcrow77@yahoo.com



MAP DATE: 4/24/2013

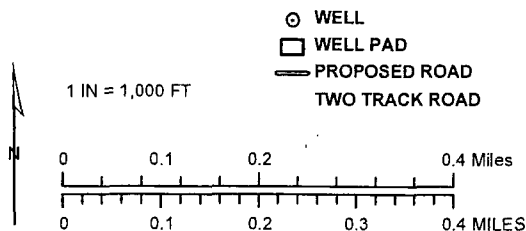
# ACCESS ROAD MAP



SEC. 25, TWP. 19 S, RGE. 34 E  
 SURVEY: N.M.P.M  
 COUNTY: LEA STATE: NEW MEXICO  
 DESCRIPTION: TUSK FED #4H  
 250' FSL & 2080' FEL

ELEVATION: 3736.0'  
 OPERATOR: COG OPERATING, LLC  
 LEASE: TUSK 25 FED

W.O. # 13-175



HARCROW SURVEYING, LLC  
 1107 WATSON, ARTESIA N.M. 88210  
 PH: (575) 513-2570 FAX: (575) 746-2158  
 chad\_harcrow77@yahoo.com



MAP DATE: 4/24/2013

# LOCATION VERIFICATION MAP - EXHIBIT 4



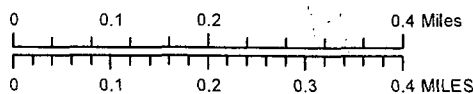
SEC. 25, TWP. 19 S, RGE. 34 E  
 SURVEY: N.M.P.M  
 COUNTY: LEA STATE: NEW MEXICO  
 DESCRIPTION: TUSK FED #4H FLOWLINE TO #2H

FLOWLINE LENGTH: 7,395'  
 OPERATOR: COG OPERATING, LLC  
 LEASE: TUSK 25 FED

W.O. # 13-482

1 IN = 1,000 FT

○ WELL  
 □ WELL PAD  
 — FLOWLINE



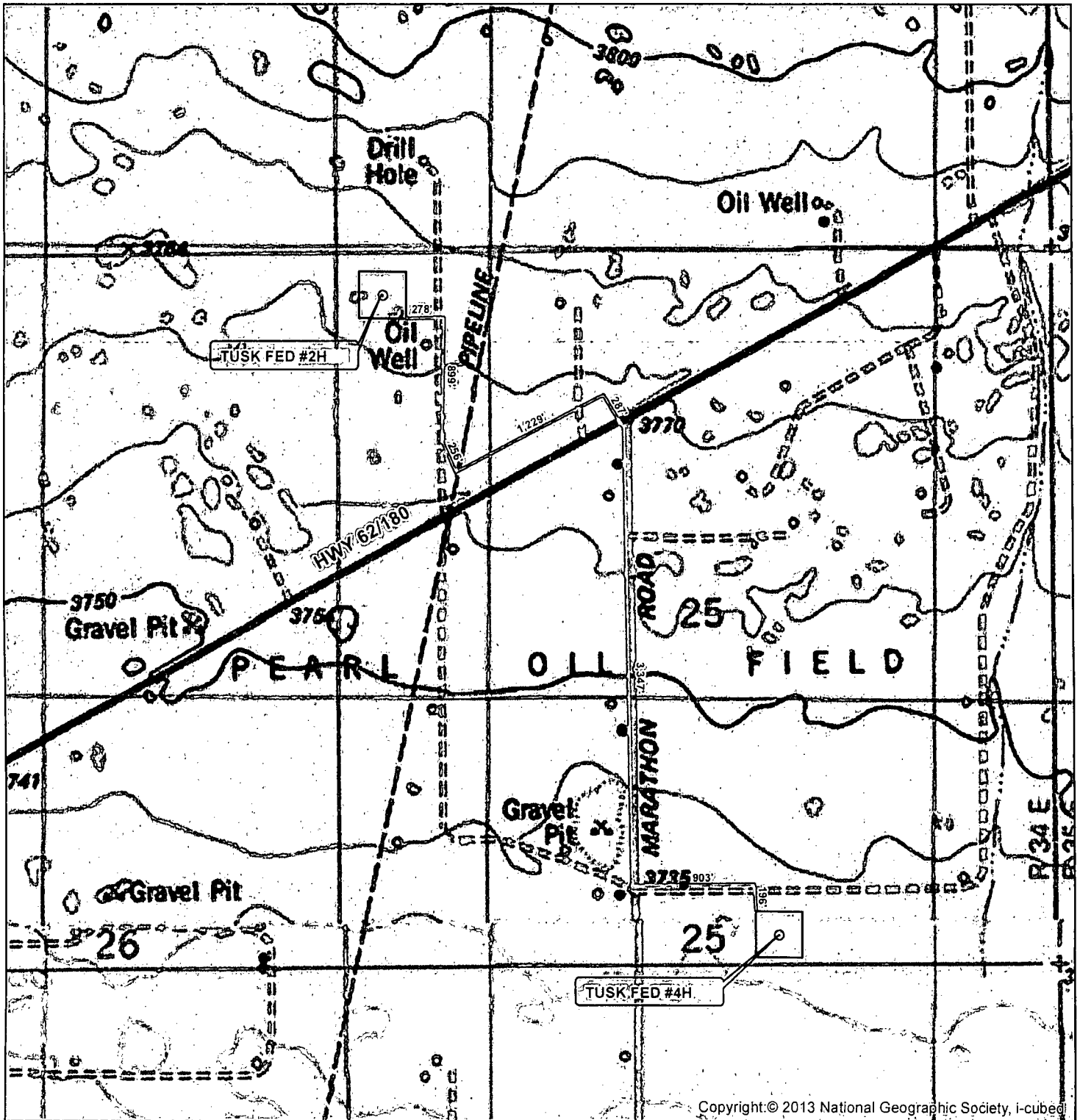
HARCROW SURVEYING, LLC  
 1107 WATSON, ARTESIA N.M. 88210  
 PH: (575) 513-2570 FAX: (575) 746-2158  
 chad\_harcrow77@yahoo.com



MAP DATE: 7/11/2013



# LOCATION VERIFICATION MAP



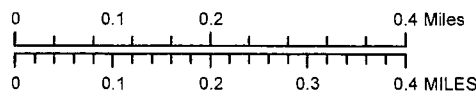
Copyright © 2013 National Geographic Society, i-cubed

SEC. 25, TWP. 19 S, RGE. 34 E  
 SURVEY: N.M.P.M  
 COUNTY: LEA STATE: NEW MEXICO  
 DESCRIPTION: TUSK FED #4H FLOWLINE TO #2H

FLOWLINE LENGTH: 7,395'  
 OPERATOR: COG OPERATING, LLC  
 LEASE: TUSK 25 FED

W.O. # 13-482

1 IN = 1,000 FT



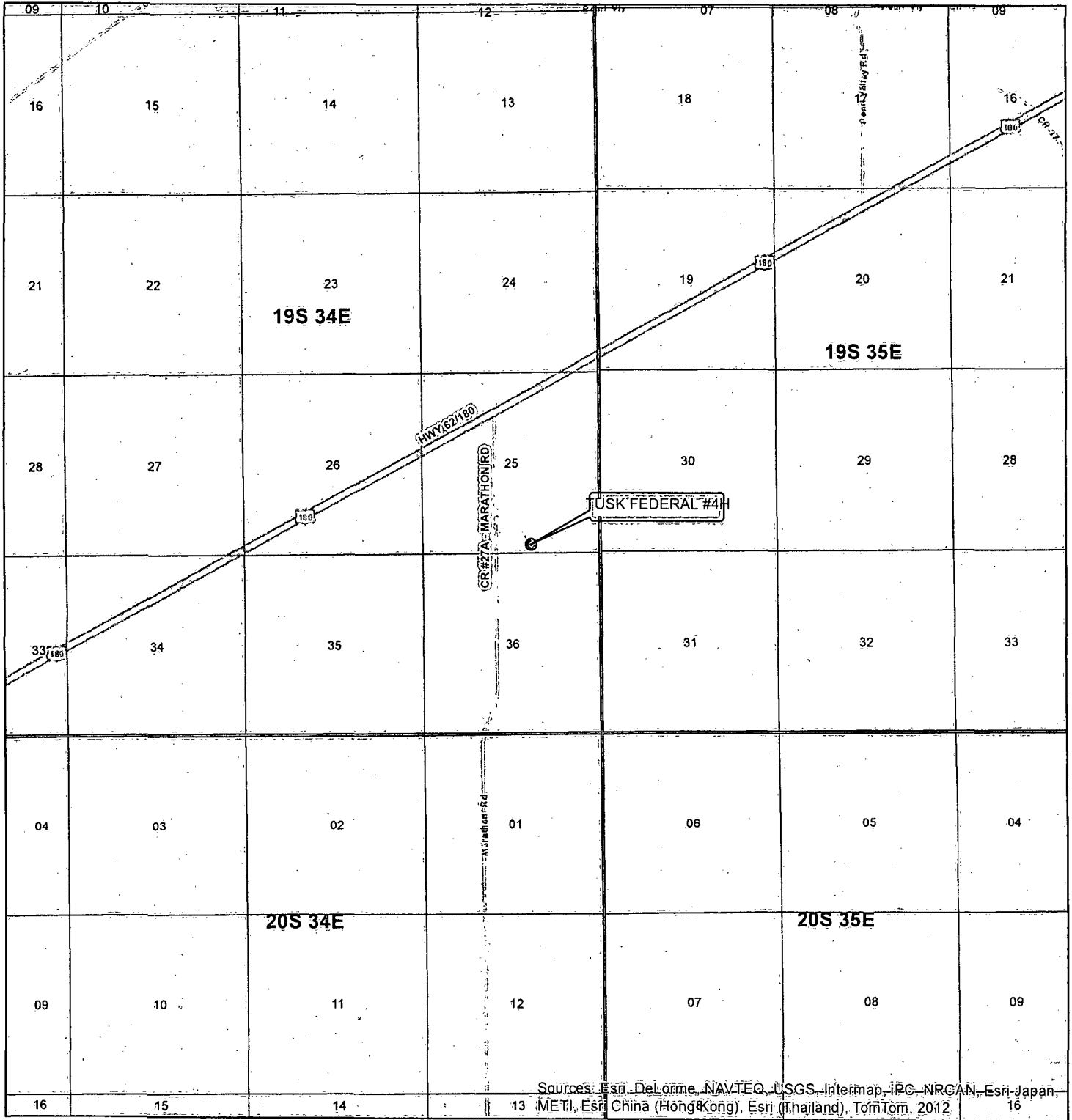
○ WELL  
 □ WELL PAD  
 — FLOWLINE

HARCROW SURVEYING, LLC  
 1107 WATSON, ARTESIA N.M. 88210  
 PH: (575) 513-2570 FAX: (575) 746-2158  
 chad\_harcrow77@yahoo.com



MAP DATE: 7/11/2013

# VICINITY MAP



Sources: Esri, DeLorme, NAVTEQ, USGS, Intermap, iPC, NRCAN, Esri-Japan, METI, Esri China (Hong Kong), Esri (Thailand), TomTom, 2012

SEC. 25, TWP. 19 S, RGE. 34 E  
 SURVEY: N.M.P.M  
 COUNTY: LEA STATE: NEW MEXICO  
 DESCRIPTION: TUSK FED #4H  
 250' FSL & 2080' FEL

ELEVATION: 3736.0'  
 OPERATOR: COG OPERATING, LLC  
 LEASE: TUSK 25 FED

W.O. # 13-175



1 IN = 4,000 FT

0 0.5 1 1.5 MILES

- WELL
- TOWNSHIP
- SECTION

HARCROW SURVEYING, LLC  
 1107 WATSON, ARTESIA N.M. 88210  
 PH: (575) 513-2570 FAX: (575) 746-2158  
 chad\_harcrow77@yahoo.com



(A.R.Co.)  
0463079

0463079

0463079

0463079

0463079

0463079

0463079

0463079

0463079

0463079

0463079

0463079

0463079

0463079

0463079

0463079

0463079

0463079

0463079

0463079

0463079

0463079

0463079

0463079

0463079

0463079

0463079

0463079

0463079

0463079

0463079

0463079

Tusk Federal #4H  
BHL: 330' FNL & 1980' FEL  
Section 25 - T19S - R34E

COG Op.

Amcco  
Fee

(Superior)  
Mescalero  
Ridge  
(To 267)

C.S. Alves, et al  
Snyder Rch. Ltd (s)

erry W Guy  
(Chevron)  
16359

16395

(Superior)  
Gov't  
SA Disc.  
P98  
(P196)  
Superior  
Gov't

Smith E,  
Marrs  
Morr. base  
(Guy's O&G)

Shell  
Mollock-Fed  
TD 6200  
D/A 9-16 59

"Reddy Gulf-St."  
State

H.L. Brown Jr  
Wilbanks-Fed  
TD 10,360  
D/A 5-73

Gulf  
Peoples Security  
(J. Markham)  
Sup. Alves  
TD 9010  
D/A 12-1-54  
ANTD 10367

Cactus  
Alver  
TD 5173  
D/A 7-17 58

Snyder Rch. Ltd (s)

U.T. Mary Peterson, P.T. Baloo et al  
HBP  
57285  
U.S.

H.E. Yates  
Prudential  
Gov't  
TD 5105

Peterson, P.T. Baloo et al  
HBP  
57285

Armstrong Engr  
Superior  
Gov't  
TD 6200

Chevron  
E-1587  
Chevron  
E-5885

Meritt  
(Hanson Oil)  
Pennzoil et al  
055:9

Superior  
Gov't  
TD 6200

Tom Brown  
(Gulf)  
TD 10416  
1-AP  
3-AP (WO)  
SMD  
Tom Brown, Inc  
Lea-St.  
2-AP  
131

Linn Engr.  
TD 5750  
D/A 7-58

"Superior Fed" Cabot  
Cabot-Fed  
Superior  
Gov't

"Lea"  
Cactus  
Gulf St  
TD 5069

Hanson Oil  
Linn Engr.  
TD 5750  
D/A 7-58

Stevens  
Fed  
U.S.

Chevron  
E-1608  
(Pure  
Bellweather)  
153

Hanson Oil  
Linn Engr.  
TD 5750  
D/A 7-58

Cabot  
Corp  
Gulf St  
Lea St  
Saran St  
(Gulf St.)

XERIC O&G  
31  
156 157  
(P/B)

Gruy Pet.  
Morr. Fed.  
TD 1300

Lea St  
(Gulf St.)  
Xeric O&G  
E-6005

XERIC O&G  
31  
156 157  
(P/B)

Mescalero  
Ridge Unit  
TD 1300  
P/B 10016

Matador  
Xeric O&G  
E-6005

XERIC O&G  
31  
156 157  
(P/B)

Driscoll  
Pure Res  
TD 5278  
D/A 2-64

Matador  
Xeric O&G  
E-6005

XERIC O&G  
31  
156 157  
(P/B)

Samson  
Eagle St  
Three Rivers

Matador  
Xeric O&G  
E-6005

XERIC O&G  
31  
156 157  
(P/B)

Tusk Federal #4H  
SHL: 250' FSL & 2080' FEL  
Section 25 - T19S - R34E

XERIC O&G  
31  
156 157  
(P/B)

"Cactus"  
Cactus  
Featherstone  
HBP  
06413  
D/A 7-8 62 U S