

DISTRICT I

1625 N. French Dr., Hobbs, NM 88240
Phone: (575) 393-6161 Fax: (575) 393-0124

DISTRICT II

811 S. First St., Artesia, NM 88210
Phone: (575) 748-1283 Fax: (575) 748-9720

DISTRICT III

1000 Rio Brazos Road, Aztec, NM 87416
Phone: (505) 334-6178 Fax: (505) 334-6170

DISTRICT IV

1220 S. St. Francis Dr., Santa Fe, NM 87505
Phone: (505) 476-3460 Fax: (505) 476-3462

State of New Mexico

HOBBS Energy, Minerals & Natural Resources Department

OIL CONSERVATION DIVISION

1220 South St. Francis Dr.
Santa Fe, New Mexico 87505

Form C-102

Revised August 1, 2011

Submit one copy to appropriate
District Office

AUG 19 2013

□ AMENDED REPORT

RECEIVED

WELL LOCATION AND ACREAGE DEDICATION PLAT

API Number 30.025-41345	Pool Code 62180	Pool Name VACUUM; GRAYBURG IN ANDRES
Property Code 29923	Property Name CVU	Well Number 218
OGRID No. 4323	Operator Name CHEVRON USA INC	Elevation 3983'

Surface Location

UL or lot No.	Section	Township	Range	Lot Idn	Feet from the	North/South line	Feet from the	East/West line	County
M	6	18-S	35-E		942	SOUTH	1015	WEST	LEA

Bottom Hole Location If Different From Surface

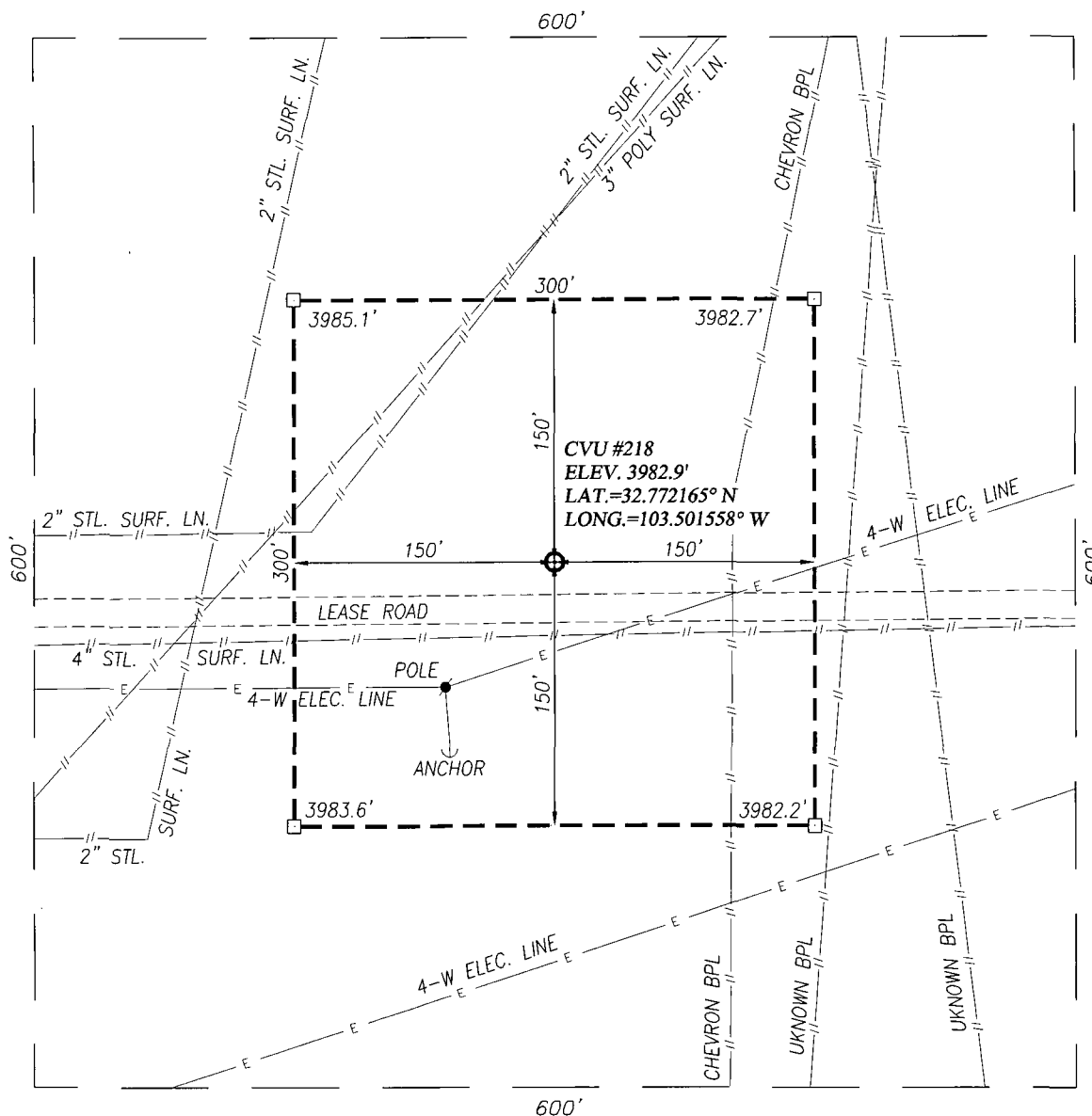
UL or lot No.	Section	Township	Range	Lot Idn	Feet from the	North/South line	Feet from the	East/West line	County
Dedicated Acres 40		Joint or Infill		Consolidation Code		Order No.			

NO ALLOWABLE WILL BE ASSIGNED TO THIS COMPLETION UNTIL ALL INTERESTS HAVE BEEN CONSOLIDATED OR A NON-STANDARD UNIT HAS BEEN APPROVED BY THE DIVISION

<p>GEODETIC COORDINATES NAD 27 NME</p> <p>SURFACE LOCATION Y=645629.1 N X=755665.4 E</p> <p>LAT.=32.772165° N LONG.=103.501558° W</p>	<p>OPERATOR CERTIFICATION</p> <p>I hereby certify that the information herein is true and complete to the best of my knowledge and belief, and that this organization either owns a working interest or unleased mineral interest in the land including the proposed bottom hole location or has a right to drill this well at this location pursuant to a contract with an owner of such mineral or working interest, or to a voluntary pooling agreement or a compulsory pooling order heretofore entered by the division.</p> <p><i>Denise Pinkerton</i> 8/14/13 Signature Date</p> <p><i>Denise Pinkerton</i> Printed Name</p> <p><i>Lea Keida Chavez.com</i> E-mail Address</p>
	<p>SURVEYOR CERTIFICATION</p> <p>I hereby certify that the well location shown on this plat was plotted from field notes of actual surveys made by me or under my supervision, and that the same is true and correct to the best of my belief.</p> <p>JULY 23, 2013</p>
	<p>Date of Survey</p> <p>Signature & Seal of Professional Surveyor:</p> <p><i>Ronald J. Eidson</i> Professional Surveyor</p> <p>3239</p> <p>7/29/2013</p> <p>Certificate Number: <i>Ronald J. Eidson</i> 12641</p> <p>BKL JWSC W.O.: 13.11.0855</p>

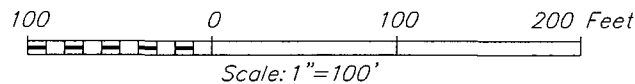
SEP 03 2013

SECTION 6, TOWNSHIP 18 SOUTH, RANGE 35 EAST, N.M.P.M.
LEA COUNTY NEW MEXICO



DIRECTIONS TO LOCATION

FROM THE INTERSECTION OF STATE HIGHWAY 238 AND COUNTY ROAD L-51 (TEXAS CAMP) GO SOUTH ON LEASE ROAD APPROX. 0.7 MILES, TURN LEFT AND GO EAST APPROX. 0.1 MILE. LOCATION STAKE IS 30 FEET NORTH OF ROAD.



CHEVRON USA INC

CVU #218 WELL
LOCATED 942 FEET FROM THE SOUTH LINE
AND 1015 FEET FROM THE WEST LINE OF SECTION 6,
TOWNSHIP 18 SOUTH, RANGE 35 EAST, N.M.P.M.,
LEA COUNTY, NEW MEXICO



PROVIDING SURVEYING SERVICES
SINCE 1946
JOHN WEST SURVEYING COMPANY
412 N. DAL PASO
HOBBS, N.M. 88240
(575) 393-3117 www.jwsc.biz

Survey Date: 7/23/13

CAD Date: 7/26/13

Drawn By: BKL

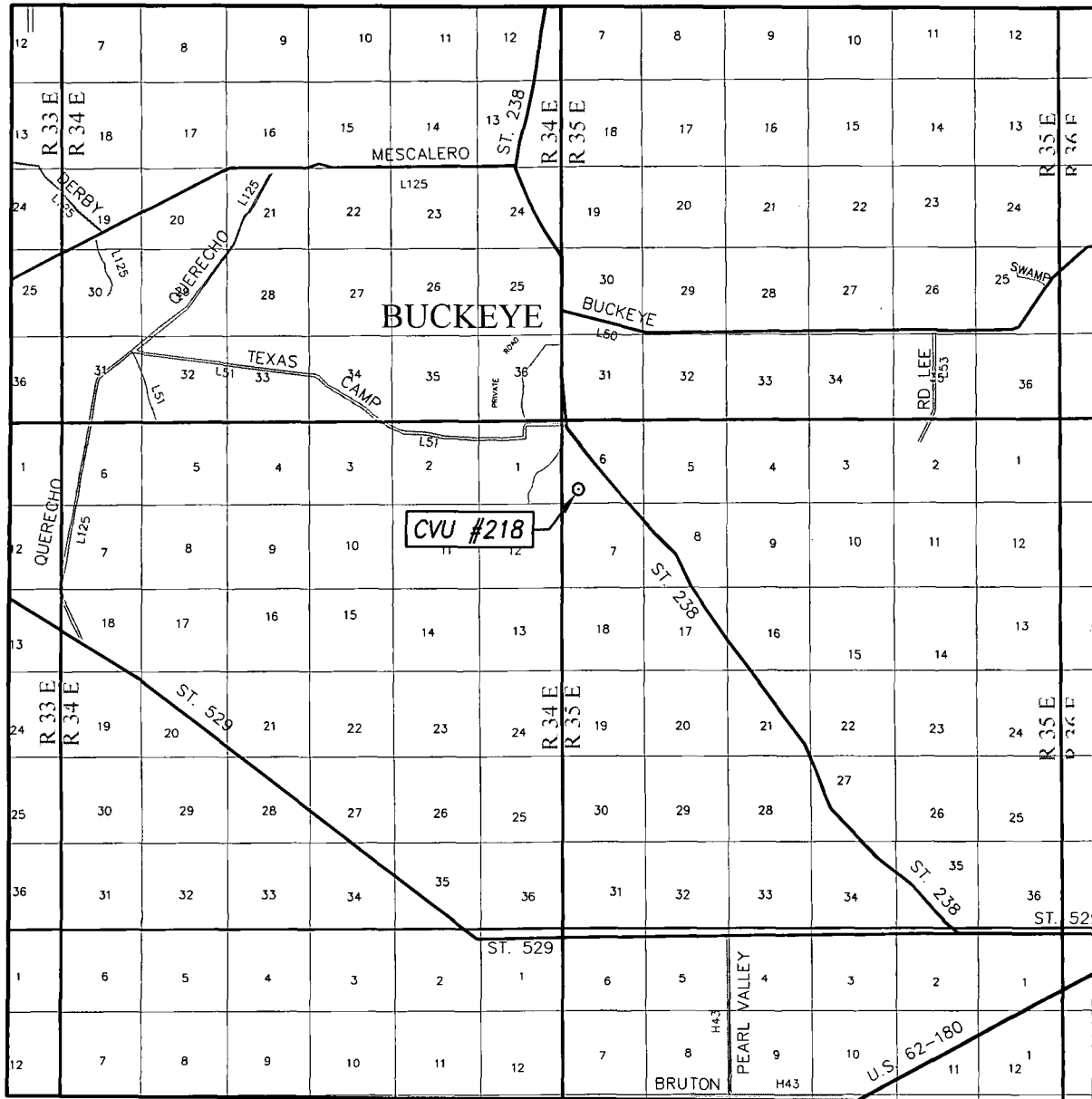
W.O. No.: 13110855

Rev: .

Rel. W.O.:

Sheet 1 of 1

VICINITY MAP



SCALE: 1" = 2 MILES

SEC. 6 TWP. 18-S RGE. 35-E

SURVEY N.M.P.M.

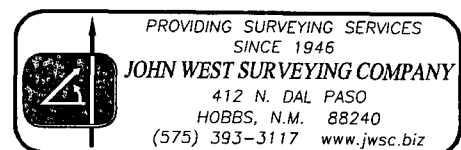
COUNTY LEA STATE NEW MEXICO

DESCRIPTION 942' FSL & 1015' FWL

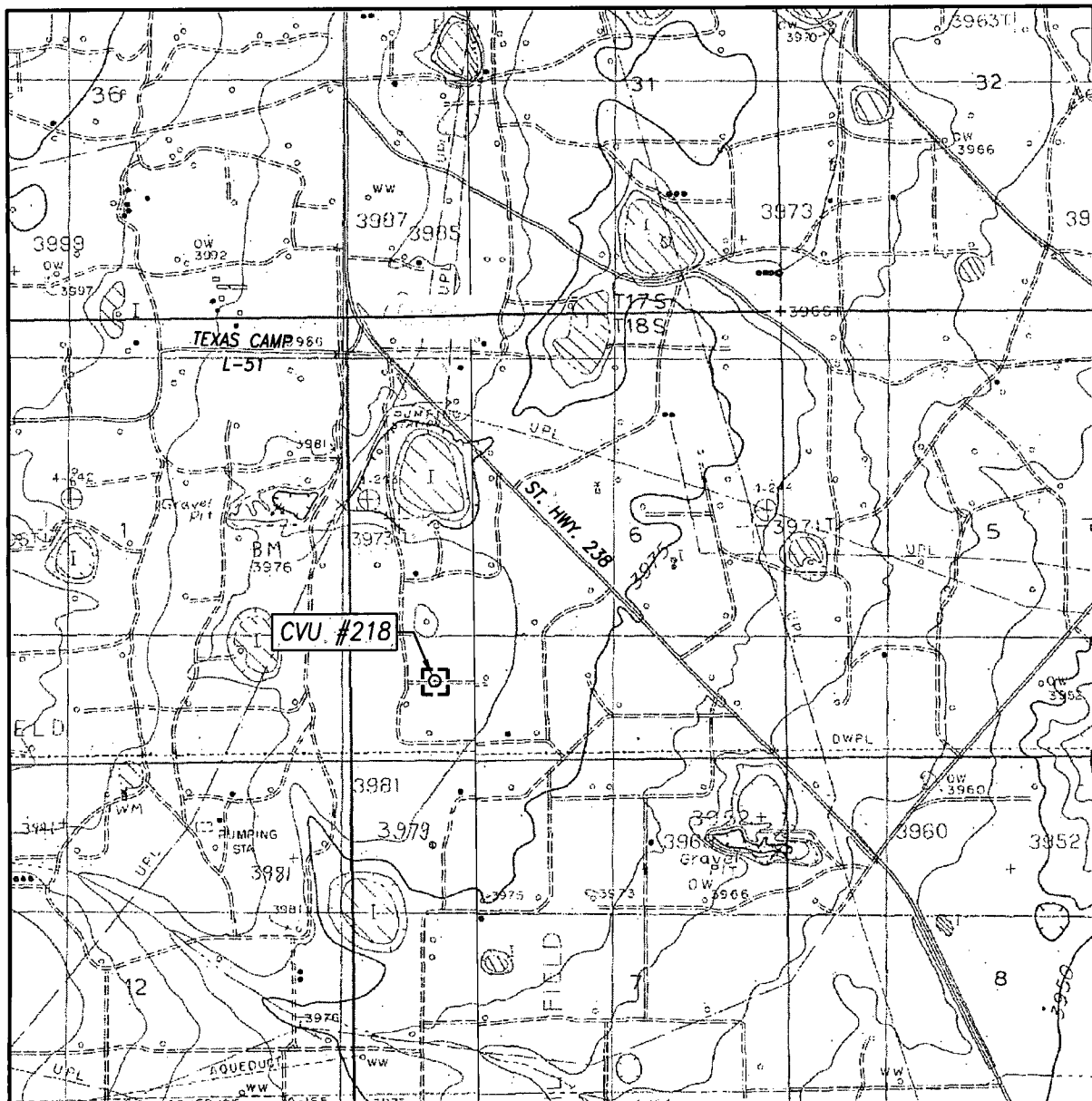
ELEVATION 3983'

OPERATOR CHEVRON USA INC

LEASE C V U



LOCATION VERIFICATION MAP



SCALE: 1" = 2000'

CONTOUR INTERVAL:
BUCKEYE, N.M. - 5'
LOVINGTON SW, N.M. - 10'

SEC. 6 TWP. 18-S RGE. 35-E

SURVEY _____ N.M.P.M.

COUNTY LEA STATE NEW MEXICO

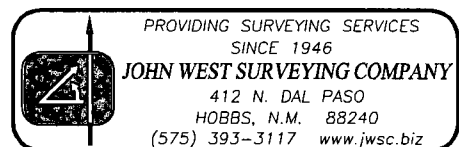
DESCRIPTION 942' FSL & 1015' FWL

ELEVATION 3983'

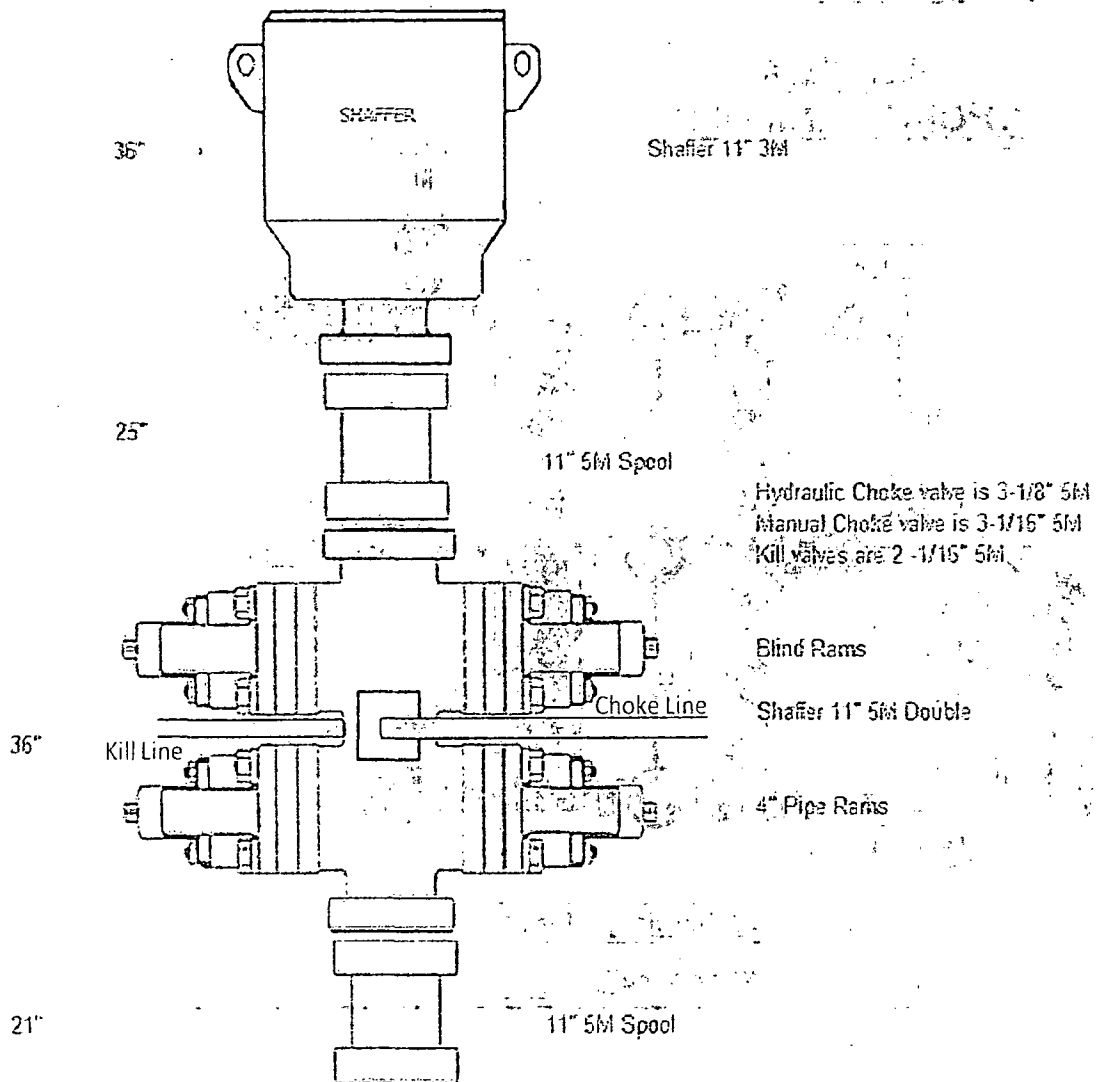
OPERATOR CHEVRON USA INC

LEASE C V U

U.S.G.S. TOPOGRAPHIC MAP
BUCKEYE, N.M.



H&P 356 Bop Schematic



Choke Manifold Diagram

