

Submit 1 Copy To Appropriate District Office
District I - (575) 393-6161
1625 N. French Dr., Hobbs, NM 88240
District II - (575) 748-1283
811 S. First St., Artesia, NM 88210
District III - (505) 334-6178
1000 Rio Brazos Rd., Aztec, NM 87410
District IV - (505) 476-3460
1220 S. St. Francis Dr., Santa Fe, NM 87505

State of New Mexico
Energy, Minerals and Natural Resources

OIL CONSERVATION DIVISION
1220 South St. Francis Dr.
Santa Fe, NM 87505

Form C-103
Revised August 1, 2011

SUNDRY NOTICES AND REPORTS ON WELLS (DO NOT USE THIS FORM FOR PROPOSALS TO DRILL OR TO DEEPEN OR PLUG BACK TO A DIFFERENT RESERVOIR. USE "APPLICATION FOR PERMIT" (FORM C-101) FOR SUCH PROPOSALS.)		WELL API NO. 30-025-31995
1. Type of Well: Oil Well <input type="checkbox"/> Gas Well <input type="checkbox"/> Other <input checked="" type="checkbox"/> INJECTION		5. Indicate Type of Lease STATE <input checked="" type="checkbox"/> FEE <input type="checkbox"/>
2. Name of Operator CHEVRON U.S.A. INC.		6. State Oil & Gas Lease No.
3. Address of Operator 15 SMITH ROAD, MIDLAND, TEXAS 79705		7. Lease Name or Unit Agreement Name WEST DOLLARHIDE DRINKARD UNIT
4. Well Location Unit Letter: H 2150 feet from the NORTH line and 850 feet from the EAST line Section 32 Township 24S Range 38E NMPM County LEA		8. Well Number 131
11. Elevation (Show whether DR, RKB, RT, GR, etc.)		9. OGRID Number 4323
10. Pool name or Wildcat DOLLARHIDE TUBB DRINKARD		

12. Check Appropriate Box to Indicate Nature of Notice, Report or Other Data

NOTICE OF INTENTION TO:

PERFORM REMEDIAL WORK ☐ PLUG AND ABANDON ☐
TEMPORARILY ABANDON ☐ CHANGE PLANS ☐
PULL OR ALTER CASING ☐ MULTIPLE COMPL ☐
DOWNHOLE COMMINGLE ☐

SUBSEQUENT REPORT OF:

REMEDIAL WORK ☐ ALTERING CASING ☐
COMMENCE DRILLING OPNS. ☐ P AND A ☐
CASING/CEMENT JOB ☐

OTHER:

OTHER: CLEAN OUT, RE-PERF, STIMULATE

13. Describe proposed or completed operations. (Clearly state all pertinent details, and give pertinent dates, including estimated date of starting any proposed work). SEE RULE 19.15.7.14 NMAC. For Multiple Completions: Attach wellbore diagram of proposed completion or recompletion.

PLEASE FIND ATTACHED REPORTS FOR WORK DONE FROM 04/16/2013 THROUGH 05/14/2013

08-14-2013 Re-run chart for NMOCD. Press to 500 psi for 30 minutes. (ORIGINAL & COPY ATTACHED)

Spud Date:

Rig Release Date:

I hereby certify that the information above is true and complete to the best of my knowledge and belief.

SIGNATURE

TITLE: REGULATORY SPECIALIST

DATE: 07/30/2013

Type or print name: DENISE PINKERTON

E-mail address: leakejd@chevron.com

PHONE: 432-687-7375

For State Use Only

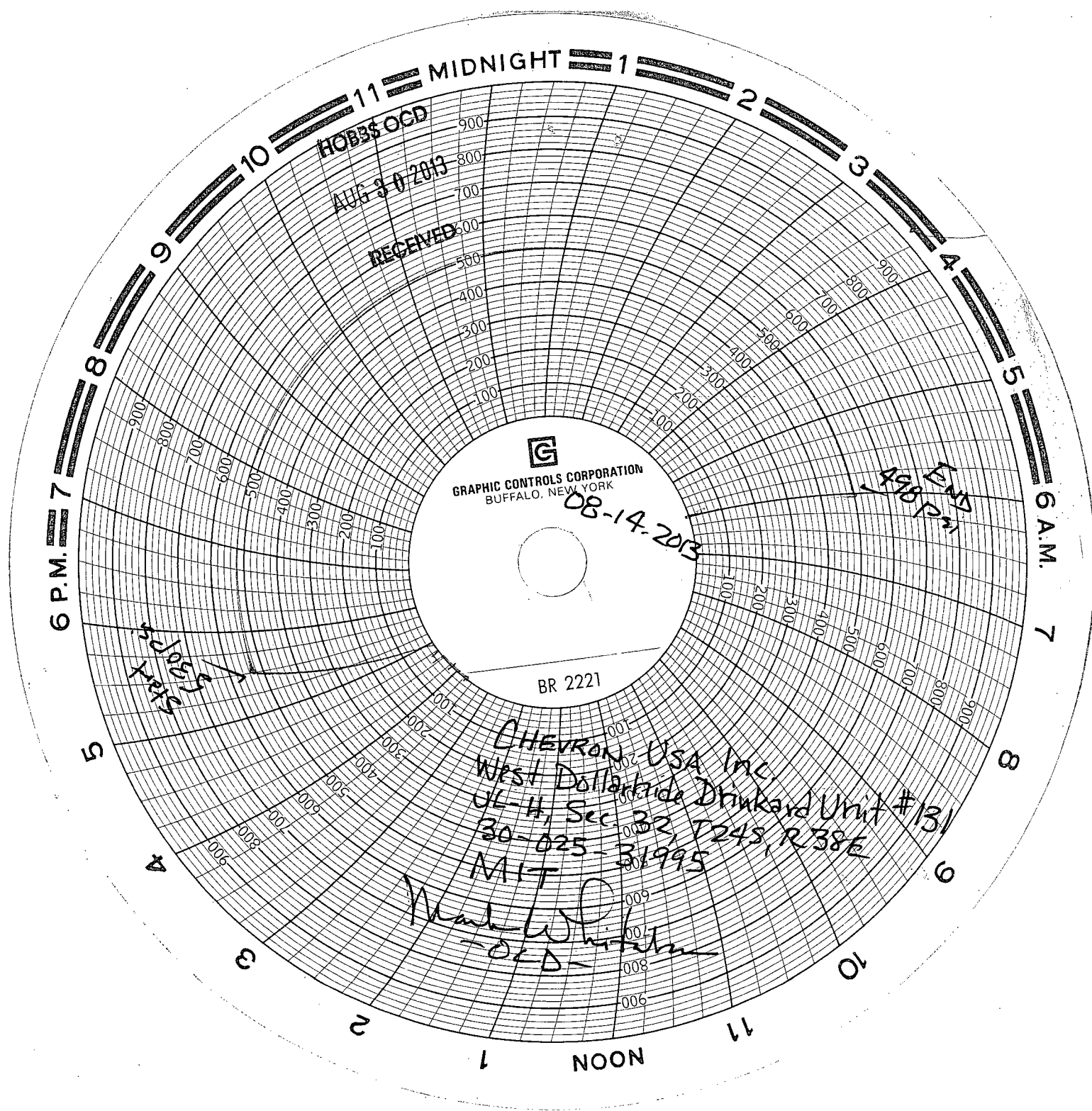
APPROVED BY:

TITLE:

DATE:

Conditions of Approval (if any):

SEP 04 2013



HOBBS OCD
AUG 30 2013

RECEIVED

G
GRAPHIC CONTROLS CORPORATION
BUFFALO, NEW YORK

08-14-2013

498 END
P21

BR 2221

CHEVRON USA Inc.
West Dolaride Drunkard Unit #131
UL-4, Sec. 32, T24S, R38E
30-025-31995
MIT

Mark W. [Signature]
OCD



Wellbore Schematic

Well Name	Lease	Field Name	Business Unit
WEST DOLLARHIDE DRINKARD UNIT 131	West Dollarhide Drinkard Unit	Dollarhide - Primary	Mid-Continent

Land - Original Hole: 7/9/2013 2:01:06 PM

Job Details

Job Category	Start Date	Release Date
Major Rig Work Over (MRWO)	4/16/2013	4/16/2013
Major Rig Work Over (MRWO)	4/18/2013	5/13/2013
Major Rig Work Over (MRWO)	5/14/2013	5/14/2013
Major Rig Work Over (MRWO)	5/15/2013	5/15/2013

Casing Strings

Csg Des	OD (in)	Wt/Len (lb/ft)	Grade	Top Thread	Set Depth (MD) (ftKB)
Surface	8 5/8	24.00			1,160
Production Casing	5 1/2	17.00	L-80		7,000

Tubing Strings

Tubing - 2 set at 6,411.7ftKB on 5/10/2013 14:00

Tubing Description	Run Date	String Length (ft)	Set Depth (MD) (ftKB)
Tubing - 2	5/10/2013	6,412.67	6,411.7

Item Des	Jts	OD (in)	Wt (lb/ft)	Grade	Len (ft)	Btm (ftKB)
Depth Correction	1				11.00	10.0
Dbl pin sub	1				0.34	10.3
Tubing	1	2 3/8	4.70	J-55	32.16	42.5
Tubing subs w/ fiberlining (10,8,6)	3	2 3/8	4.70	J-55	24.30	66.8
Tubing w/ Fiberline	210	2 3/8	4.70	J-55	6,331.50	6,398.3
On/Off tool w/ 1.43 F profile	3	4 1/2			1.71	6,400.0
Packer - Peak AS1-X nickle plated/plastic IPC	1	4 5/8			7.26	6,407.3
Tubing pup - IPC ID/OD	1	2 3/8	4.70	J-55	3.97	6,411.2
Pump out plug w/ 4 pins	1	3 1/16	0.00		0.43	6,411.7

Perforations

Date	Top (ftKB)	Btm (ftKB)	Shot Dens (shots/ft)	Entered Shot Total	Zone & Completion
	6,485.0	6,500.0	4.0		Drinkard, Original Hole
	6,504.0	6,508.0	4.0		Drinkard, Original Hole
	6,512.0	6,544.0	4.0		Drinkard, Original Hole
	6,552.0	6,560.0	4.0		Drinkard, Original Hole
	6,566.0	6,579.0	4.0		Drinkard, Original Hole
	6,584.0	6,606.0	4.0		Drinkard, Original Hole
	6,628.0	6,632.0	4.0		Drinkard, Original Hole
	6,653.0	6,658.0	4.0		Drinkard, Original Hole

Other Strings

Run Date	Pull Date	Set Depth (ftKB)	Com

Other In Hole

Des	Top (ftKB)	Btm (ftKB)	Run Date	Pull Date	Com
Sand	981.0	991.0	4/20/2013	4/26/2013	
Bridge Plug (Retrievable) Peak	991.0	994.0	4/20/2013	4/26/2013	
Blanking Plug	6,413.0	6,414.0	4/16/2013	4/29/2013	
Uni VI Packer	6,413.6	6,420.2		4/30/2013	Original injection packer pulled for clean out
Fill (Sand / Mud / Debris)	6,470.0	7,000.0		5/1/2013	Fill cleaned out

30-025-31995
H-32 245 38E
2150N 850E

SK-~~245~~ 38E
C/O R. P. R. J.
S. J. M.



Summary Report

Major Rig Work Over (MRWO)

Stimulation

Job Start Date: 4/18/2013

Job End Date: 5/15/2013

Well Name WEST DOLLARHIDE DRINKARD UNIT 131	Lease West Dollarhide Drinkard Unit	Field Name Dollarhide - Primary	Business Unit Mid-Continent
Ground Elevation (ft)	Original RKB (ft)	Current RKB Elevation	Mud Line Elevation (ft) Water Depth (ft)

Report Start Date: 4/16/2013

Com

SITP - 1000 psi
(Bled down to 60 psi in 5 mins flowing all water)

RU Diamond D slickline & RIH w/ 1.50 gauge ring.

Pump 25 bbls brine.
SITP after pumping brine was 800 psi.

RIH w/ 1.43 F blanking plug & set in SN @ 6420'.
POOH & RD Diamond D

Test plug & tubing to 1500 psi for 10 mins

Report Start Date: 4/18/2013

Com

RU Nabors 1251

Lunch

ND WH, NU BOP.

Cont RU Nabors 1251

Test BOP Against injection pkr (Failed)

Would not pressure up on backside, and was able to pump 1 bpm @ 120 psi. (3 bbls total pumped)

POOH w/ 1 std, PU pkr, RIH 25', Set pkr, test BOP to 1020 psi (Passed)

Release pkr, & LD same.

RU Basin Tubing Testers

POOH w/ 144 jts of 2 3/8" fiberlined tubing (All Good)
On/Off tool @ ~2000'

RD Scanners, SI & Secure well SDFN.

Crew Travel

Report Start Date: 4/19/2013

Com

Crew Travel

Safety Meeting

TP - 0 psi

CP - 0 psi

RU Basin tubing Scanners

Cont POOH w/ 2 3/8 fiberlined tubing.

All 213 jts scanned yellow

RD Basin

RU floor for 2 7/8 tubing, change pipe rams, & tally work string.

BOP tested good

Final Results:
Surface- 32' (Good)
32'-64' (Leaked 100 psi in 5 mins)
64'-96' (Would not pressure up, pumped 1 bpm @ 120 psi)
96'-6420'(Good)

Lunch

Wait on orders/try to line up wireline

Filled casing with 2 bbls after well was sitting shut in for 3 1/2 hours (appx FL @ 84' from surface)

Waited 20 mins and filled csg with less than 0.25 bbls.(FL less than 10' from surface)

Pumped 15 bbls @ 0.5 bpm @ 100 psi down 5 1/2" csg and tried to circ up 8 5/8" X 5 1/2" annulus with no success.

SI & secure well SDFN

Crew Travel

Report Start Date: 4/20/2013

Com

Crew Travel



Summary Report

Major Rig Work Over (MRWO)

Stimulation

Job Start Date: 4/18/2013

Job End Date: 5/15/2013

Well Name WEST DOLLARHIDE DRINKARD UNIT 131	Lease West Dollarhide Drinkard Unit	Field Name Dollarhide - Primary	Business Unit Mid-Continent
Ground Elevation (ft)	Original RKB (ft)	Current RKB Elevation	Mud Line Elevation (ft) Water Depth (ft)

Com

Safety Meeting

RU apollo wireline

Run 4.60 Gauge ring/Junk Basket & tag pkr @ 6405'

Run RAL log f/ 6405' - Surface

Run Caliper log f/ 250' - surface

TOC @ 15 ft from surface
hole @ 76' w/ good cmt above and below hole.

RD Apollo

PU RBP, TIH w/ 31 jts & set @ 994'

Dumped 10' of sand on top.

POOH w/ 31 jts

ND BOP, NU B-1 flange w/ 6ft sub on bottom

SI & Secure well SDFN

Crew Travel

Report Start Date: 4/22/2013

Com

Crew Travel

Safety Meeting

RU Basic

Squeeze hole @ 65' from service.

Pumped 100 sxs @ 1.5 bpm @ 400 psi.
Shut down pump & pressure fell to 200 psi.
Cont pumping 60 more sxs @ 0.5 bpm @ 200 psi.

Waited 20 mins

Pumped 1 bbl & pressured up from 200 psi to 500 psi, shut down pump & pressure held for a sec and broke back ot 200 psi.

Pump 100 sxs @ 1 bpm @ 425 psi
Shut down and pressure fell to 150 psi

Shut down 40 mins

Pumped 0.5 bbls aand it pressured up to 500 psi, held for 1 min, broke back to 300 psi and held for 10 mins.

SI well & wait 3.5 hours

Lunch

Wait 3 hrs for cmt to cure and pressure up on csg again.

Left well with 300 psi @ 12:00. Opened well @ 15:30 & well still had 300 psi on it. Pressured up to 575 psi and held for 20 mins.

Shut in & secure well with 575 psi overnight.

Crew Travel

Report Start Date: 4/23/2013

Com

Travel Time for Rig Crew

JSA Safety Meeting, discussed the days job procedure & hazards involved in opeations.

ND Well Head

NU BOP Stack

Start dilling Cement @ 30 ft & drilled cement thru to 125 ft. Cement was below initial leak & was hard Cement

Pressure up on Casing & pumped in @ 350 PSI @ 1/4 BPM. Squeeze did not hold. Notified Engineer & advised to test casing again

TOH laying down Drill Collars

Debrief Meeting. Discussed the days events.

Travel Time for Rig Crew

Report Start Date: 4/24/2013

Com

Travel Time for Rig Crew



Summary Report

Major Rig Work Over (MRWO)

Stimulation

Job Start Date: 4/18/2013

Job End Date: 5/15/2013

Well Name WEST DOLLARHIDE DRINKARD UNIT 131	Lease West Dollarhide Drinkard Unit	Field Name Dollarhide - Primary	Business Unit Mid-Continent
Ground Elevation (ft)	Original RKB (ft)	Current RKB Elevation	Mud Line Elevation (ft) Water Depth (ft)

Com

JSA Safety Meeting. Discussed the days job procedure & hazards.

TIH w/ AS-1X & set @ 85 ft

Pressure up on 2 7/8" Tbg to 500 PSI & held for 10 min & Okay.

ND BOP Stack & NU Wellhead Flange to pump Cement.

JSA Safety Meeting Pre Job w/ Basic Cement: Discussed pressure, lifting Iron, Cement Dust in the air, excessive noise around pump equipment.

Start Inj Rate @300 PSI @ 1/4 BPM for 4 bbls. Start Mixing Class C Cement w/ 2% Cal Chl @ 14.8 ppg & mix 180 sks & pump pressure up to 750 psi & SD pressure bled to 0 PSI.

Continue to pump Cement & pressure up to 550 PSI @ 1/4 BPM. SD & Washed up Pumps & lines. Pressure back up o Squeeze to 550 psi & SI. SD & WOC to set up.

Pressure up on Squeeze Job & went to 550 PSI & held for 15 min w/o bleed off. Left 550 psi on well.

RD basic Cement equipment from wellhead. WELLSI.

Debrief Meeting, discussed the days events & what went well & what went wrong.

Travel Time for Rig Crew.

Report Start Date: 4/25/2013

Com

Travel Time for Rig Crew

JSA Safety meeting discussed the days job procedure & hazards.

50 PSI on well ND Well Head, NU BOP, install Stripper Head. Function Test BOP Rams.

TIH & tag Cement @ 38 ft from surface. Started drilling w/ 45 RPM, 2K WOB, 150 PSI pump pressure. Drilled down to 41 ft & got Soft Cement Returns. Notified Tim O'Connell & decision was made to SD for the day.

SI Well & close Hydri on Drill Collars & close al valves.

Debrief Meeting. Discussed the events of the morning & what we need to do to be safer.

Travel Time for Rig Crew.

Report Start Date: 4/26/2013

Com

Travel Time for Rig Crew

JSA Safety Meeting Discussed the days job procedure & Hazards.

RU Power Swivel for drilling operations

Start drilling @ 41 ft @ 45 RPM, 2 K WOB, 150 PSI circulating pressure. Drilled of Cement @ 105 ft. Circ wellbore clear.

Test Casing to 550 PSI for 30 min.

Lay down Power Swivel & TOH laying down drill collars.

TIH w/ Peak Ret Head for RBP.

RU & wash sand off RBP & release.

TOH w/ RBP

TIH w/ O/O Tool PU 2 7/8" W S Tbg

JSA Safety Meeting w/ Diamond Slickline. Discussed job procedures & hazards. Be aware of Slickline, lifting & twisting, suspended loads, pressure, slips trips & falls, crush points.

RU Diamond D Slickline equipment to wellhead

TIH w/ equalizing tool to 6420 ft to equalize Profile Plug. Unable to get Lubricator to hold Pressure & Truck did not have a Retrieving Tool for Profile Plug.

RD Diamond D Slickline & release from location

Travel Time for Rig Crew.

Report Start Date: 4/29/2013

Com

Crew Travel

Safety Meeting

Release on/off tool & circ 40 bbls pkr fluid out of backside & latch back onto pkr.

RU precision slickline unit

Equalize pressure - Pressured up to 1500 psi and punched disk in plug. Had 800 psi on well with tubing full of brine.

Retrieve plug -

Made 3 runs but finally got the plug.

RD Slickline

Flowback well

Flowed ~ 250 bbls in 2.5 hours. Rate dropped significantly in the last 50 bbls.

SI well & monitored pressure for 5 min, & it did not build up any pressure.

SI & Secure well SDFN.



Summary Report

Major Rig Work Over (MRWO)

Stimulation

Job Start Date: 4/18/2013

Job End Date: 5/15/2013

Well Name WEST DOLLARHIDE DRINKARD UNIT 131		Lease West Dollarhide Drinkard Unit	Field Name Dollarhide - Primary	Business Unit Mid-Continent	
Ground Elevation (ft)	Original RKB (ft)	Current RKB Elevation		Mud Line Elevation (ft)	Water Depth (ft)

Com

Crew Travel

Report Start Date: 4/30/2013

Com

Crew travel

SM: tenet, E-colors, HazID, JSA's, operations plan.

SITP = 800 psi SICP = 0. Flow back well to tank to relieve pressures. elevators still attached to tubing. Did not caliper.

Attempt to release packer while tubing still flowing slightly. Unable to get packer to "J" up in pulling position. Attempt to get rubbers to release by flowing up tubing and attempting to pump down annulus. Allow well to flow up tubing.

Pump 10 bbl 14.5 ppg CaCarb mud down tubing. Work to release packer. Packer released. LD swivel.

TOH w/ injection packer. Slight amount of swabbing at beginning of trip. Secure well w/ 66 stands out. Well is flowing up the annulus. Allow well to flow over lunch. Caliper elevators at first break.

Noon meal. Well flowed 10 bbl in 1/2 hour.

Pump 5 bbl mud down tubing and 13 1/2 bbl down annulus. Both sides dead.

TOH

LD packer assembly. PU 4 3/4" bit, BS, and 3 x 3 1/2" DC's, XO.

TIH. Tag at 6470'. Well started flowing up annulus with 1 stand of pipe left in derrick.

Safety meeting - discussed handrails, possible dropped objects from floor. Discussed possible problems with well flowing up annulus, building pressure under TIW valve and contingencies.

RU stripper and swivel.

Break circulation conventionally. Wash and ream f/ 6470' to 6537'. Hard spots: 6522' to 6537'. Hard spots giving up heavy iron scale. At 6532' recovered 15 perf balls. At the end lost torque and began seeing small shiny cuttings of metal while not making any hole in 30 minutes

Circulate clean and LD swivel.

TOH to 6350'. Secure well and change clothes.

Crew travel.

Report Start Date: 5/1/2013

Com

Crew travel

SM: tenet, SWA, HazID wheel, mechanical advantage, weather changes - winds and hydration, operations plan

SITP=SICP = 350 psi. Flow down annulus and kill tubing with 15 bbl BW.

TIH 4 stands.

LD tongs. PU swivel and make connection.

Wash/ream/drill on scale f/ 6537' to 6852'. Took 20 minutes to make any footage and then bit fell thru f/ 6537 to 6540'. Reamed firm scale to 6560' and then washed to 6770'. Drilled firm scale f/6770' to 6785'. C/O to PBTD at 6852'.

Circulate wellbore clean.

LD swivel. PU tongs. TOH. Pulled tight at 6770 - 6755 w/ max overpull of 30 K. Work pipe thru all tight places.

Secure well. Changes clothes

Crew travel

Report Start Date: 5/2/2013

Com

Crew travel

SM: tenet, SWA, HazID, E-Colors, Well control using mud to balance fluid level in wellbore, operations plan, why we are doing this perforating.

SITP=SICP = 350 psi. Open annulus and flow down pressures

First hour flowed 80 bbl

2nd hour flowed 20 bbl

3rd hour flowed 12 bbl

4th hour flowed 15 bbl.

Well continues to flow at 10 - 15 bbl per hour at "0" pressure.

Offline activities includes HES drills and well control competency testing

Bullhead 48 bbl CaCarb mud down annulus. Bullhead 17 bbl mud down tubing. Both sides on small vacuum.

Secure well. Change clothes

Crew travel

Report Start Date: 5/3/2013

Com

Crew travel

SM: tenet, SWA, Leadership, E-Colors, HazID, operations plan, caliper elevators,

Set COM, check pressures, caliper elevators

TIH - tag at 6550'.

LD tongs and PU swivel.



Summary Report

Major Rig Work Over (MRWO)

Stimulation

Job Start Date: 4/18/2013

Job End Date: 5/15/2013

Well Name WEST DOLLARHIDE DRINKARD UNIT 131	Lease West Dollarhide Drinkard Unit	Field Name Dollarhide - Primary	Business Unit Mid-Continent
Ground Elevation (ft)	Original RKB (ft)	Current RKB Elevation	Mud Line Elevation (ft) Water Depth (ft)

Com

Break circulation with 15 bbl fluid. 7 bbl to load tubing and 8 additional bbl to break circulation. Calculated top of fluid = 506'. Wash/ream/drill f/ 6550' to 6712'. Ream each tight spot 1 time. Unable to make any further footage past 6712'. Started making metal shavings.

Circulate clean. Wellbore making large amount of scale and chewed up plastic (frac balls).

Bullhead 48 bbl mud down annulus. Bullhead 17 1/2 bbl mud down tubing. Both sides on vacuum.

LD swivel and PU tongs. TOH. Bit had some shirrtail wear but showed no signs of junk, all cones free. No apparent reason it did not drill.

PU taper mill and TIH.

Secure well. Changes clothes. Debrief good and bad for today.

Crew travel.

Report Start Date: 5/4/2013

Com

Crew travel

SM: tenet, E-Colors, HazID, SWA, leadership, 360 My space, operations plan

SITP=SICP = slight blow. Caliper elevators, check COM

TIH to 6470'.

LD tongs. PU swivel and stripper.

Break circulation w/ 4 bbl to catch tbq pressure and 6 additional bbl to break circulation (calculated top of mud column = 380'). Begin wash and ream to bottom. Tagged up at 6540' and had to ream 3 times to keep the wellbore open f/ 6540' to 6565'. Circulate to balance fluids.

Wash and ream to 6712'. tagged solid.

Mill on tight spot at 6712'. Samples indicate iron scale, formation, steel, and cement. Very little cuttings coming back as we made 2" in 3 hrs. the pipe torqued up and stalled out. We PU and then sat back down and started making some footage. Hole tight f/ 6712' to 6725'. then it smoothed out. Ream 3 times before entire joint ran smooth.

Continue washing/reaming to PBTD @ 6852'

Circulate wellbore clean.

LD swivel. TOH to 6800'. Pulled tight. Unable to rotate with rig tongs. Work pipe to 50K overpull. with no upward movement. Pipe free going down.

PU swivel. Break circulation and rotate up with no problems. Ream thru tight spot twice.

LD swivel, PU tongs, and stand back 9 stands. EOT at 6218'.

Clear location and secure well

Crew travel

Report Start Date: 5/6/2013

Com

Crew travel

SM: tenet, SWA, 360 MySpace, well control, HazID, E-Colors

SITP=SICP=500 psi. Flow down annulus while pumping 10 ppg BW on tubing.

Tubing dead. Well flowing up annulus. TIH. Tag at 6539'.

LD tongs. PU swivel. LD joint.

Ream/mill from 6539' to 6542'. Had to ream through the area 12 times to keep open. Cuttings were chunks of smooth cement about 3/16" thick.

Continue reaming to PBTD. No problems until 6837' - 6852'. Had to work taper mill multiple times to keep open. Cuttings were iron scale.

Circulate bottoms up 2 times. Work pipe every 15 minutes and rotate continually. Wellbore smoothed out. Displace tubing with BW. Tubing dead. well flowing up annulus.

LD swivel. PU tongs.

TOH LD excess tbq. No tight hole or drag.

Wait to monitor wellbore. Annulus flowing at 10-15 BPH. Tubing dead.

TIH. Did not tag anything. No fill on bottom.

TOH 9 stands.

RU and bullhead kill mud. 48 bbl down annulus. 17 1/2 bbl down tubing. Both sides on vacuum. Allow mud to equalize.

TIH and tag PBTD w/ no problems

TOH to 3507

Secure well. Change clothes

Crew travel

Report Start Date: 5/7/2013

Com

Crew travel

SM: tenet, SWA, E-Colors, HazID, pressures, operations plan.

SITP=SICP= slight vacuum. Set COM and caliper elevators.

TOH. LD collars and taper mill. Mill is worn to 4 1/4" OD.

RD stripper head. Remove piece of casing wedged in the annular preventer.

Safety meeting with the perforators. Discussed: muster areas, operations plan, radio silence, and crew placement.



Summary Report

Major Rig Work Over (MRWO)

Stimulation

Job Start Date: 4/18/2013

Job End Date: 5/15/2013

Well Name WEST DOLLARHIDE DRINKARD UNIT 131	Lease West Dollarhide Drinkard Unit	Field Name Dollarhide - Primary	Business Unit Mid-Continent
Ground Elevation (ft)	Original RKB (ft)	Current RKB Elevation	Mud Line Elevation (ft) Water Depth (ft)

Com
RU: sheaves and lubricator. Test same.
1st run = Junk basket and 3.95" gauge ring. Correlated to Union WL GR/CCL log dated 6/13/94. Tag down at 6522'. Attempt to work past tight spot w/ no success.
POH w/ tools. Fluid level showed on WL at 610' from surface.
Wait on smaller junk basket and gauge ring
2nd run = junk basket and 3.50" gauge ring. RIH and found fluid level at 370'. Tag down at 6522' WL. Work tools to 6537' WL and then unable to work any deeper. POH and LD tools.
RD WL equipment
Prepare to TIH. Caliper elevators. Install stripper head.
PU taper mill, 3 x 3 1/2" DC's, and XO. TIH to 6257'
Crew travel
Report Start Date: 5/8/2013
Com
Crew travel
SM: tenet, SWA, E-Colors, HazID, operations plan, change of scope, leadership, well control question.
SITP=SICP= slight blow. Caliper elevators, set COM.
TIH. Tag at 6540'MD. "Bump" on obstruction twice to 3-5K and it fell thru. Tag again at 6562'. Bump again and chase to PBTD.
TOH. LD BHA.
PU injection packer assembly. Unable to run packer. The annular preventer is not opening totally. LD packer assembly.
Close blind rams, RD floor, and ND annular preventer
Noon meal
NU pollution pan. Install floor and RU tongs.
PU packer assembly. TIH.
Break circulation with BW. Circulate mud from wellbore using packer fluid.
RU swivel. Space out and set packer. Top of packer at 6400'.
Test casing, packer, and pump out plug to 600 psi for 28 minutes.
Release pressure. RD swivel and stripper head.
TOH LD WS. Secure well.
Crew travel.
Report Start Date: 5/9/2013
Com
Crew travel
SM: tenet, SWA, E-Colors, HazID, Why well control, operations plan
SITP=SICP= slight vacuum. Caliper elevators and set COM. Check unit, vacuum system, H2S system.
TOH LD WS. TIH w/ excess tbg from derrick.
Noon meal
LD tbg and swivel.
Change 2 7/8" pipe rams to 2 3/8" rams. RIH w/ packer to 25' and test rams to 600 psi. No leaks. LD packer.
RU tbg testers.
TIH testing 2 3/8" 4.7# J55 EUE 8rd fiberlined injection tbg. Test to 3000 psi BS. Began cracking liner at 2000 psi. LD 4 joints out of 16 tested.
Inspect tubulars laid down. Order more tbg. RD testers
TIH inspecting and drifting tbg. Tuboscope inspector on location.
Secure well. Change clothes.
Crew travel
Report Start Date: 5/10/2013
Com
Crew travel
SM: tenet, operations, SWA, E-Colors, HazID. New tubing
SITP=SICP=0 Set COM and caliper elevators
TIH w/ injection tubing inspecting seals and drifting.
Wait on new tubing from yard. Noon meal
Offload new tbg and strap.
TIH PU injection tbg. Tag packer as planned.
Space out. Land tbg. Pressure test annulus, casing seat, tubing, and on/off tool to 550 psi.
ND BOPE
Install B-1 adapter and injection valve.



Summary Report

Major Rig Work Over (MRWO)

Stimulation

Job Start Date: 4/18/2013

Job End Date: 5/15/2013

Well Name WEST DOLLARHIDE DRINKARD UNIT 131	Lease West Dollarhide Drinkard Unit	Field Name Dollarhide - Primary	Business Unit Mid-Continent
Ground Elevation (ft)	Original RKB (ft)	Current RKB Elevation	Mud Line Elevation (ft) Water Depth (ft)

Com

Perform MIT as per NMOCD direction. Test to 500 psi. Pressure fell off slowly to 480 psi and then held steady.

Pressure up on tubing. Pump out plug blew at 2200 psi. Tubing pressure after plug gone = 700 psi.

Secure well. Change clothes

Crew travel

Report Start Date: 5/13/2013

Com

Crew travel.

SM: tenet, SWA, 360, HazID, E-Colors. JSA for RD. Operations plan, rig move checklist.

RD unit. Clear location.

Check unit for travel. Discuss rig move, routes, traffic, and spotting unit.

Wait on acid trucks to become available

SM: JSA on RU and pumping acid.

RU to wellhead.

Offload and roll acid in tanks.

Pump acid job: SITP = 830 psi. SICP = 363 psi. BD w/ 5 bbl BW. Pump 8000 gal 15% HCL and overflush to bottom perf w/35 bbl BW.

Average rate = 1.7 bpm @ 1980 psi

Maximum pressure = 2.3 bpm @ 2045 psi

ISIP = 1245

5 min = 1238

10 min = 1234

15 min = 1231

BLTBR = 271 bbl

Close well in and RD

Report Start Date: 5/14/2013

Com

Went over job scope for RU of flow line

RU flow line to 1/2 Frac tank

Flow back 375 Bbls of fluid

Report Start Date: 5/15/2013

Com

discussed JSA

RD flow back line, RU injection line, clean LOC