

District I
1625 N. French Dr., Hobbs, NM 88240
District II
1301 W. Grand Avenue, Artesia, NM 88210
District III
1000 Rio Brazos Road, Aztec, NM 87410
District IV
1220 S. St. Francis Dr., Santa Fe, NM 87505

State of New Mexico
Energy Minerals and Natural Resources
Department
Oil Conservation Division
1220 South St. Francis Dr.
Santa Fe, NM 87505

Form C-144 CLEZ
July 21, 2008

For closed-loop systems that only use above ground steel tanks or haul-off bins and propose to implement waste removal for closure, submit to the appropriate NMOCD District Office.

Closed-Loop System Permit or Closure Plan Application

(that only use above ground steel tanks or haul-off bins and propose to implement waste removal for closure)

Type of action: ☒ Permit ☐ Closure

Instructions: Please submit one application (Form C-144 CLEZ) per individual closed-loop system request. For closed-loop system that only use above ground steel tanks or haul-off bins and propose to implement waste removal for closure, submit to the appropriate NMOCD District Office.

Please be advised that approval of this request does not relieve the operator of liability for environmental damage. Nor does approval relieve the operator of its responsibility to comply with all applicable laws and regulations.

PER OCD RULE 19.15.17; Form C-144clez is no longer required to be submitted, but the operator still has to use and to report to the OCD that Closed-Loop System is being used. Put this statement on all intents: During this procedure we plan to use the Closed-Loop System and haul contents to the required disposal.

1. Operator: John H. Hendrix Corporation
Address: P. O. Box 3040, Midland, TX 79702-3040
Facility or well name: Amoco State S #3
API Number: 30-025-12191 OCD Permit Number: **FOR RECORD ONLY**
U/L or Qtr/Qtr E Section 32 Township T22S Range R38E County: Lea **ELG 9-9-2013**
Center of Proposed Design: Latitude Longitude NAD: ☐ 1927 ☐ 1983
Surface Owner: ☐ Federal ☒ State ☐ Private ☐ Tribal Trust or Indian Allotment

2. ☒ **Closed-loop System:** Subsection H of 19.15.17.11 NMAC
Operation: ☐ Drilling a new well ☒ Workover or Drilling (Applies to activities which require prior approval of a permit or notice of intent) ☐ P&A
☒ Above Ground Steel Tanks or ☐ Haul-off Bins OR VACUUM TRUCK

3. **Signs:** Subsection C of 19.15.17.11 NMAC
☐ 12"x 24", 2" lettering, providing Operator's name, site location, and emergency telephone numbers
☐ Signed in compliance with 19.15.3.103 NMAC
HOBBS OCD
SEP 06 2013

4. **Closed-loop Systems Permit Application Attachment Checklist:** Subsection B of 19.15.17.9 NMAC
Instructions: Each of the following items must be attached to the application. Please indicate, by a check mark in the box, that the documents are attached.
☒ Design Plan - based upon the appropriate requirements of 19.15.17.11 NMAC
☒ Operating and Maintenance Plan - based upon the appropriate requirements of 19.15.17.12 NMAC
☒ Closure Plan (Please complete Box 5) - based upon the appropriate requirements of Subsection C of 19.15.17.9 NMAC and 19.15.17.13 NMAC
☐ Previously Approved Design (attach copy of design) API Number: _____
☐ Previously Approved Operating and Maintenance Plan API Number: _____
RECEIVED

5. **Waste Removal Closure For Closed-loop Systems That Utilize Above Ground Steel Tanks or Haul-off Bins Only:** (19.15.17.13.D NMAC)
Instructions: Please identify the facility or facilities for the disposal of liquids, drilling fluids and drill cuttings. Use attachment if more than two facilities are required.
Disposal Facility Name: Sundance Services Disposal Facility Permit Number: NM-01-0003
Disposal Facility Name: Disposal Facility Permit Number: _____
Will any of the proposed closed-loop system operations and associated activities occur on or in areas that will not be used for future service and operations?
☐ Yes (If yes, please provide the information below) ☒ No
Required for impacted areas which will not be used for future service and operations:
☐ Soil Backfill and Cover Design Specifications - based upon the appropriate requirements of Subsection H of 19.15.17.13 NMAC
☐ Re-vegetation Plan - based upon the appropriate requirements of Subsection I of 19.15.17.13 NMAC
☐ Site Reclamation Plan - based upon the appropriate requirements of Subsection G of 19.15.17.13 NMAC

6. **Operator Application Certification:**
I hereby certify that the information submitted with this application is true, accurate and complete to the best of my knowledge and belief.
Name (Print): Carolyn Doran Haynes Title: Engineer
Signature: *Carolyn Doran Haynes* Date: 09/05/13
e-mail address: cdoranhaynes@jhhc.org Telephone: 432-684-6631

SEP 09 2013

7.

OCD Approval: ☐ Permit Application (including closure plan) ☐ Closure Plan (only)

OCD Representative Signature: _____

Approval Date: _____

Title: _____

OCD Permit Number _____

FOR RECORD ONLY

10-9-2013

8.

Closure Report (required within 60 days of closure completion): Subsection K of 19.15.17.13 NMAC

Instructions: Operators are required to obtain an approved closure plan prior to implementing any closure activities and submitting the closure report. The closure report is required to be submitted to the division within 60 days of the completion of the closure activities. Please do not complete this section of the form until an approved closure plan has been obtained and the closure activities have been completed.

☐ Closure Completion Date: _____

9.

Closure Report Regarding Waste Removal Closure For Closed-loop Systems That Utilize Above Ground Steel Tanks or Haul-off Bins Only:

Instructions: Please identify the facility or facilities for where the liquids, drilling fluids and drill cuttings were disposed. Use attachment if more than two facilities were utilized.

Disposal Facility Name: _____

Disposal Facility Permit Number: _____

Disposal Facility Name: _____

Disposal Facility Permit Number: _____

Were the closed-loop system operations and associated activities performed on or in areas that *will not* be used for future service and operations?

☐ Yes (If yes, please demonstrate compliance to the items below) ☐ No

Required for impacted areas which will not be used for future service and operations:

☐ Site Reclamation (Photo Documentation)

☐ Soil Backfilling and Cover Installation

☐ Re-vegetation Application Rates and Seeding Technique

10.

Operator Closure Certification:

I hereby certify that the information and attachments submitted with this closure report is true, accurate and complete to the best of my knowledge and belief. I also certify that the closure complies with all applicable closure requirements and conditions specified in the approved closure plan.

Name (Print): _____

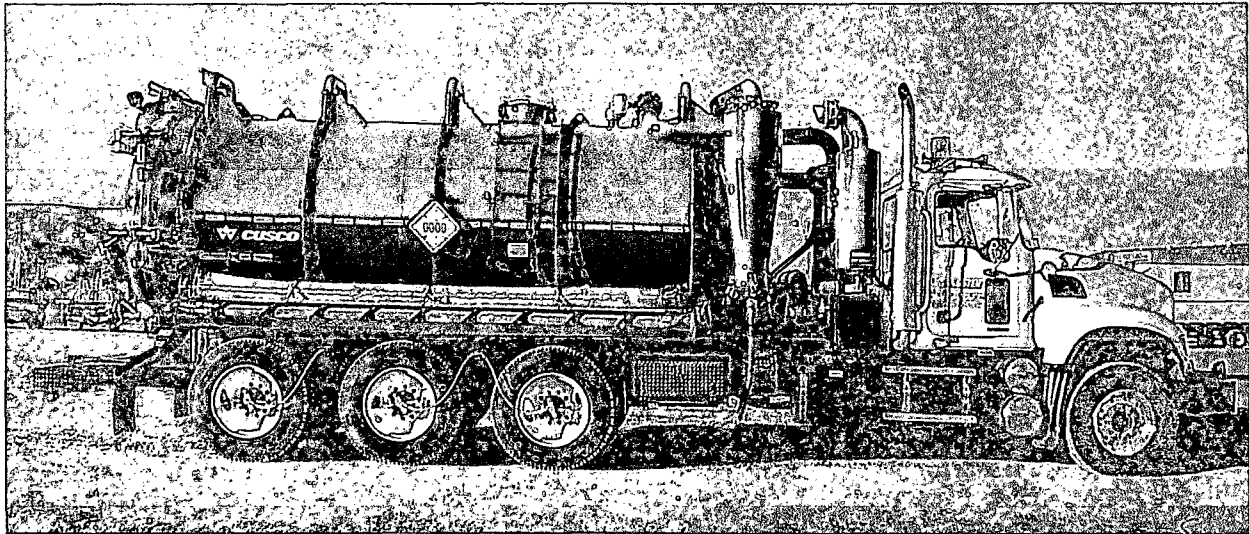
Title: _____

Signature: _____

Date: _____

e-mail address: _____

Telephone: _____

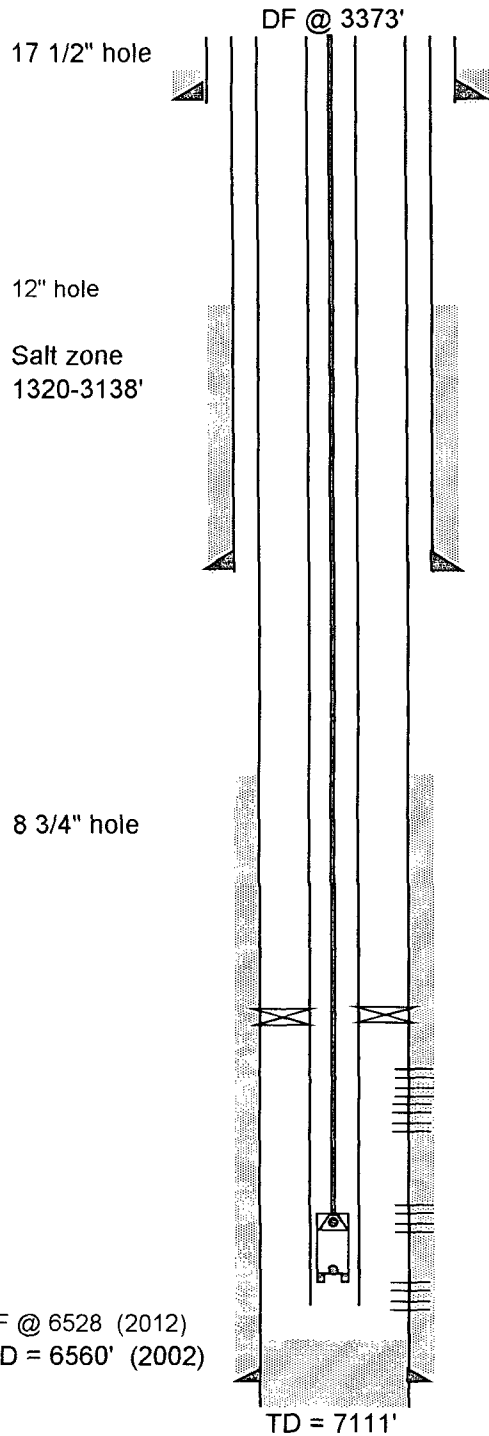


1. The above is a picture of the type of vacuum truck to be used during workover operations instead of a steel tank.
2. A steel flow line will be laid from the wellhead to the steel tank (or vacuum truck).
3. Fluids from the wellbore will be circulated from the wellbore to the steel tank (or vacuum truck) to spot acid.
4. Flow of water, oil or gas by natural flow, swabbing, etc. will be directly to the steel tank (or vacuum truck) for testing purposes.
5. If a reportable spill should occur, it will be reported to the NMOCD and the land owner and remediated as to NMOCD guidelines.
6. Water, spent acid water, and produced water will be hauled by vacuum truck to Sundance Services (Permit No. NM -01-0003) for disposal. No solids are anticipated.
7. Any oil from the steel tank (or vacuum truck) will be skimmed off and transferred to the tank battery by the vacuum truck.

Amoco State S #3

1980' FNL & 660' FWL, Sec 32, T22S, R38E, Lea County, New Mexico

UL E



13 3/8" 36# csg @ 313' cmt w/300 sx circ

API # 30-025-12191

OGRID # 012024

TOC 1975' (TS)

Tbg: 2 3/8" 170, TAC,34, SN, PS, BPMA (2012)

Rods: 77 - 7/8"; 172 - 3/4"; 9 - 7/8" (2012)

9 5/8" 36# csg @ 2981' cmt w/700 sx

DHC Order No HOB - 0475 (2011)

DHC Blinebry, Tubb, Drinkard

Blinebry perfs @ 5496-5730' (2012)

Blinebry perfs @ 5545-5610' (1956) sqzd (2002)

Blinebry Perfs @ 5492-5742' (1984) sqzd (2002)

Tubb perfs @ 6102-6230' (2012)

Tubb perfs @ 6050-6155' and 6205-6270' (1956) sqzd (2002)

Drinkard perfs 6323-6518' (2002)

Completed in Drinkard OH sqzd 350 sx (1956)

7" 20 and 23# csg @ 6866' w/660 sx

OH 6866-7111' - 4 3/4" hole

TFF @ 6528 (2012)
PBTD = 6560' (2002)

TD = 7111'

Drawn	BY	John H. Hendrix Corporation 110 North Marienfeld Suite 400 Midland, TX 79702	Amoco State S #3 1980' FNL & 660' FWL SEC 32, T22S, R38E Lea County New Mexico
2012	JHHC		