

Surface Use Plan
Double X 25 Federal No. 9
Cimarex Energy Co.
Unit D, Section 25
T24S-R32E, Lea County, NM

HOBBS OCD

SEP 19 2013

RECEIVED

30-025-41417

7. Ancillary Facilities:

- A. No camps or airstrips to be constructed.

8. Well Site Layout:

- A. Exhibit "D" shows location and rig layout.
- C. Mud pits in the closed circulating system will be steel pits and the cuttings will be stored in steel containment pits.
- D. Cuttings will be stored in steel pits until they are hauled to a state-approved disposal facility.
- E. If the well is a producer, those areas of the location not essential to production facilities will be reclaimed and seeded per BLM requirements.

9. Plans for Restoration of Surface:

Rehabilitation of the location will start in a timely manner after all drilling operations cease. The type of reclamation will depend on whether the well is a producer or a dry hole.

In areas planned for interim and final reclamation, surfacing materials will be removed and returned to a mineral pit or recycled to repair or build roads and well pads.

Drainage systems, if any, will be reshaped to the original configuration with provisions made to alleviate erosion. These may need to be modified in certain circumstances to prevent inundation of the location's pad and surface facilities. After the area has been shaped and contoured, topsoil from the spoil pile will be placed over the disturbed area to the extent possible. Revegetation procedures will comply with BLM standards.

If the well is a dry hole, the pad and road area will be recountoured to match the existing terrain. Topsoil will be spread to the extent possible. Revegetation will comply with BLM standards.

Should the well be a producer, those areas of the location not essential to production facilities and operations will be reclaimed and seeded per BLM requirements. Please see Production Facilities Layout Diagram, exhibit D-1.

10 Methods of Handling Waste

- A. Drilling fluids, produced oil, and water from the well during drilling and completion operations will be stored safely and disposed of properly in a NMOCD approved disposal facility.
- B. Garbage and trash produced during drilling and completion operations will be collected in a trash container and disposed of properly at a state approved disposal facility. All trash on and around well site will be collected for disposal.
- C. Human waste and grey water will be properly contained and disposed of properly at a state approved disposal site.
- D. After drilling and completion operations, trash, chemicals, salts, frac sand and other waste will be removed and disposed of properly at a state approved disposal site.
- E. The well will be drilled utilizing a closed loop system. Drill cuttings will be properly disposed of into steel tanks and taken to an NMOCD approved disposal facility.

11 Other Information

- A. Topography consists of a sloping plane with loose tan sands. Vegetation is mainly yucca, mesquite and shin oak.
- B. The wellsite is on surface owned by Department of the Interior, Bureau of Land Management. The land is used mainly for farming, cattle ranching, recreational use, and oil and gas production.
- C. In lieu of an archaeological survey report, Cimarex will be submitting an MOA application for this well pad and access road since they are within the MOA boundary.
- D. There are no known dwellings within 1½ miles of this location.

SEP 23 2013

Operator Certification Statement

Double X 25 Federal No. 9

Cimarex Energy Co.

Unit A, Section 25

T24S-R32E, Lea County, NM

Operator's Representative

Cimarex Energy Co.

600 N Marienfeld St Ste 600


Midland TX 79701

Office Phone: (432) 571-7800

Zeno Farris

CERTIFICATION: I hereby certify that I, or someone under my direct supervision, have inspected the drill site and access route proposed herein; that I am familiar with the conditions which currently exist; that I have full knowledge of state and Federal laws applicable to this operation; that the statements made in this APD package are, to the best of my knowledge, true and correct; and that the work associated with the operations proposed herein will be performed in conformity with this APD package and the terms and conditions under which it is approved. I also certify that I, or the company I represent, am responsible for the operations conducted under this application. These statements are subject to the provisions of 18 U.S.C. 1001 for the filing of false statements.

Executed this 1 day of October, 2012

NAME: 
Tracie J Cherr

TITLE: Sr. Regulatory Analyst

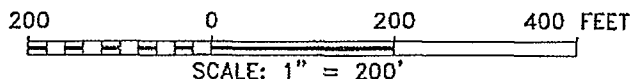
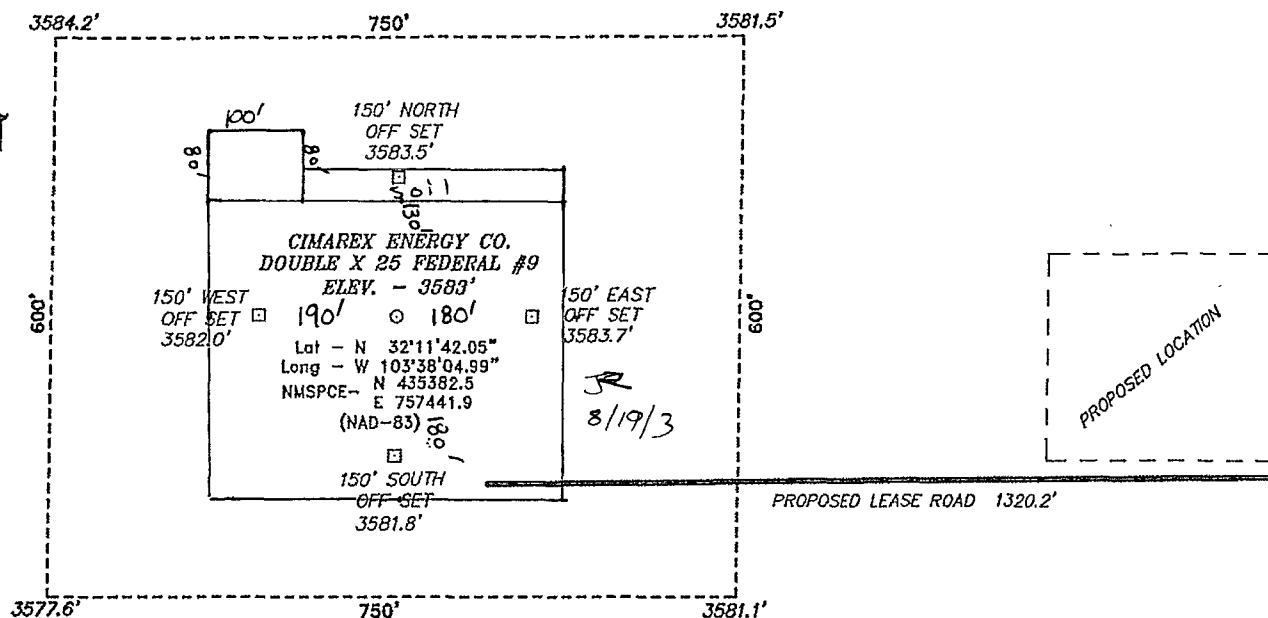
ADDRESS: 600 N Marienfeld St Ste 600
Midland TX 79701

TELEPHONE: Office Phone: (432) 571-7800

EMAIL: tcherr@cimarex.com

Field Representative: Same as above

SECTION 25, TOWNSHIP 24 SOUTH, RANGE 32 EAST, N.M.P.M.,
LEA COUNTY, NEW MEXICO.



Directions to Location:

FROM MILE MARKER 25 OF HWY 128, GO EAST 0.5
MILES TO LEASE ROAD, ON LEASE ROAD GO SOUTH
1.1 MILES TO PROPOSED LEASE ROAD.

CIMAREX ENERGY CO.

REF: DOUBLE X 25 FEDERAL #9 / WELL PAD TOPO

THE DOUBLE X 25 FEDERAL #9 LOCATED 330'

FROM THE NORTH LINE AND 660' FROM THE WEST LINE OF

SECTION 25, TOWNSHIP 24 SOUTH, RANGE 32 EAST,

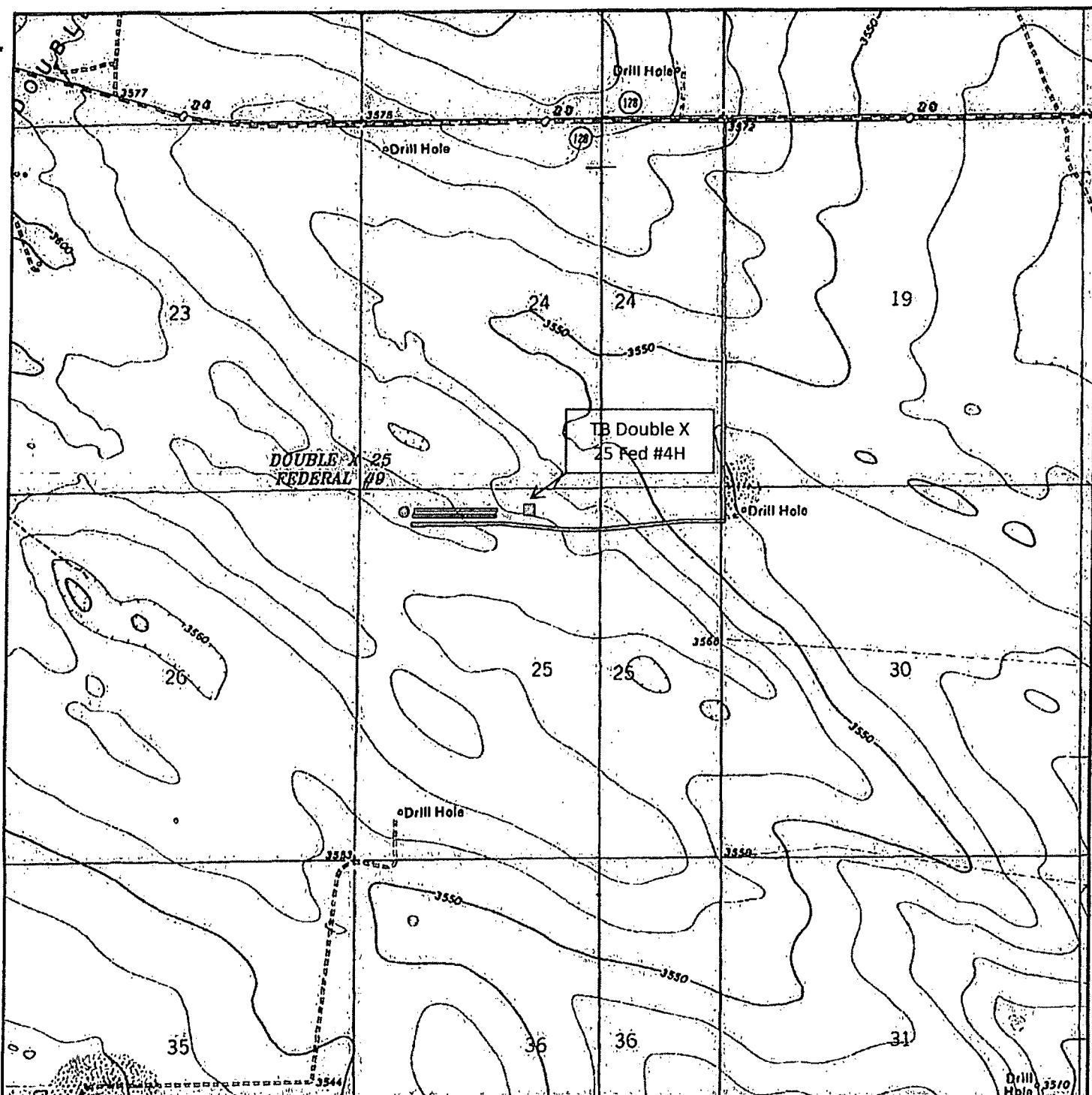
N.M.P.M., LEA COUNTY, NEW MEXICO.

BASIN SURVEYS P.O. BOX 1786-HOBBS, NEW MEXICO

W.O. Number: 26542 Drawn By: J. SMALL

Date: 04-12-2012 Disk: JMS 26542

Survey Date: 04-11-2012 Sheet 1 of 1 Sheets



DOUBLE X 25 FEDERAL #9

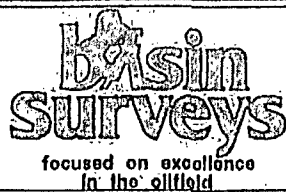
Located 330' FNL and 660' FWL

Section 25, Township 24 South, Range 32 East,
N.M.P.M., Lea County, New Mexico.

□ Tank Battery

— Flow Line

- - - Eline



P.O. Box 1786
1120 N. West County Rd.
Hobbs, New Mexico 88241
(575) 393-7316 - Office
(575) 392-2206 - Fax
basinsurveys.com

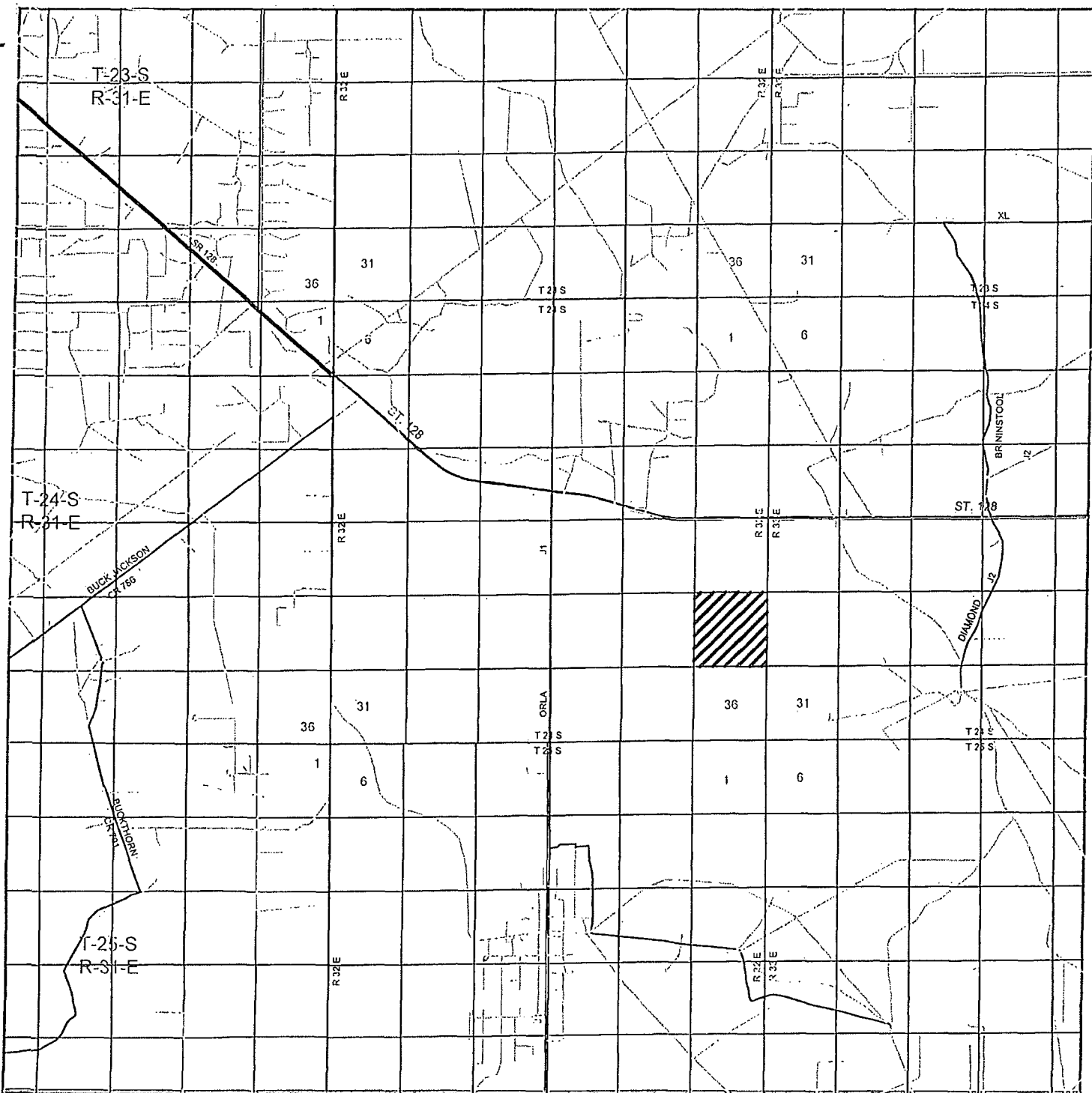
W.O. Number: JMS 26542

Survey Date: 04-11-2012

Scale: 1" = 2000'

Date: 04-12-2012

**CIMAREX
ENERGY CO.**



DOUBLE X 25 FEDERAL #9
 Located 330' FNL and 660' FWL
 Section 25, Township 24 South, Range 32 East,
 N.M.P.M., Lea County, New Mexico.

basin
surveys
 focused on excellence
 in the oilfield

P.O. Box 1786
 1120 N. West County Rd.
 Hobbs, New Mexico 88241
 (575) 393-7316 - Office
 (575) 392-2206 - Fax
 basin-surveys.com

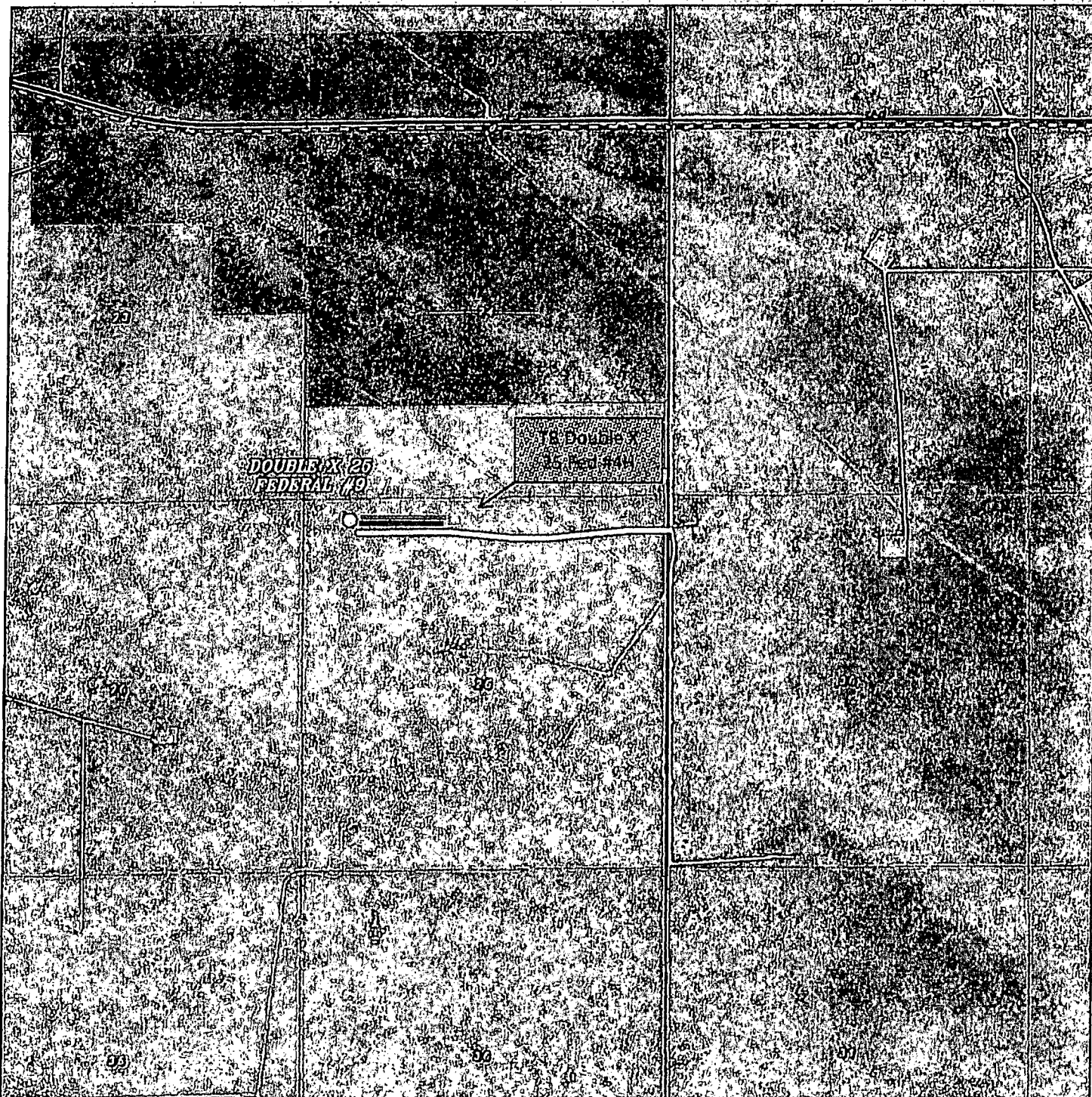
W.O. Number: JMS 26542

Survey Date: 04-11-2012

Scale: 1" = 2 Miles

Date: 04-12-2012

CIMAREX
ENERGY CO.



DOUBLE X 25 FEDERAL #9

Located 330' FNL and 660' FWL

Section 25, Township 24 South, Range 32 East,
N.M.P.M., Lea County, New Mexico.

□ Tank Battery

— Flow Line

— Eline

basin
surveys

focused on excellence
in the oilfield

P.O. Box 1786
1120 N. West County Rd.
Hobbs, New Mexico 88241
(575) 393-7316 - Office
(575) 392-2206 - Fax
basinsurveys.com

W.O. Number: JMS 26542

Scale: 1" = 2000'

YELLOW TINT - USA LAND
BLUE TINT - STATE LAND
NATURAL COLOR - FEE LAND

CIMAREX
ENERGY CO.

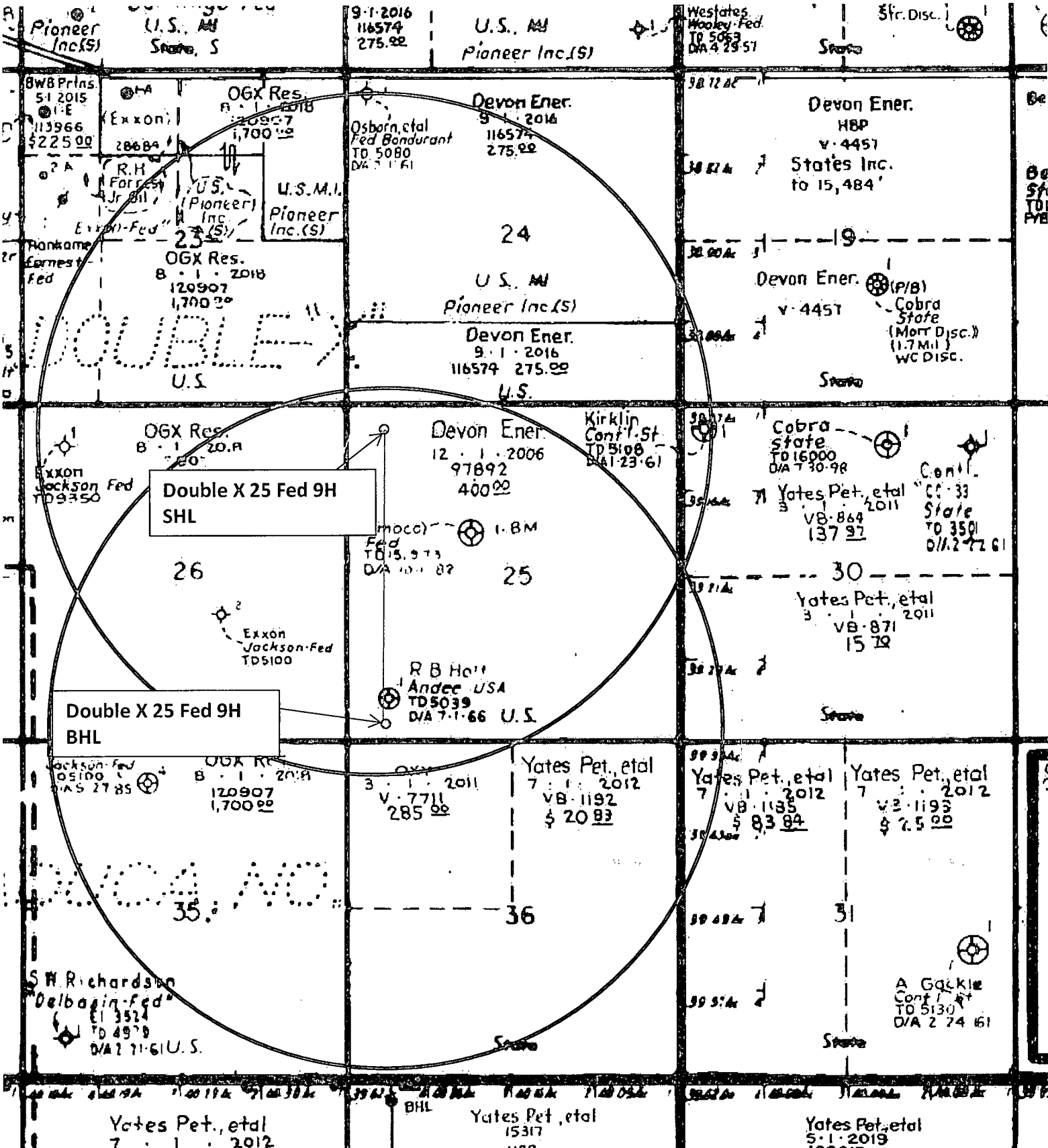


Exhibit "A"
One-Mile Radius Map
Double X 25 Federal 9H
Cimarex Energy Co.
25-24S-32E
SHL 330' FNL & 660' FWL
BHL 330' FSL & 660' FWL
Lea County, NM