

District I
1625 N. French Dr., Hobbs, NM 88240
Phone: (575) 393-6161 Fax: (575) 393-0720
District II
811 S. First St., Artesia, NM 88210
Phone: (575) 748-1283 Fax: (575) 748-9720
District III
1000 Rio Brazos Road, Aztec, NM 87410
Phone: (505) 334-6178 Fax: (505) 334-6170
District IV
1220 S. St. Francis Dr., Santa Fe, NM 87505
Phone: (505) 476-3460 Fax: (505) 476-3462

State of New Mexico
Energy, Minerals & Natural Resources Department
OIL CONSERVATION DIVISION
1220 South St. Francis Dr.
Santa Fe, NM 87505

HOBBS OCD

SEP 20 2013

Form C-102
Revised August 1, 2011
Submit one copy to appropriate
District Office

RECEIVED

AMENDED REPORT

WELL LOCATION AND ACREAGE DEDICATION PLAT

API Number 30-025-41424	Pool Code 13320	Pool Name Corbin; Wolf Camp, South
Property Code 40063	Property Name CORBIN SOUTH FEDERAL COM	Well Number 2
OGRID No. 116696	Operator Name OXY USA INC.	Elevation 3926.9'

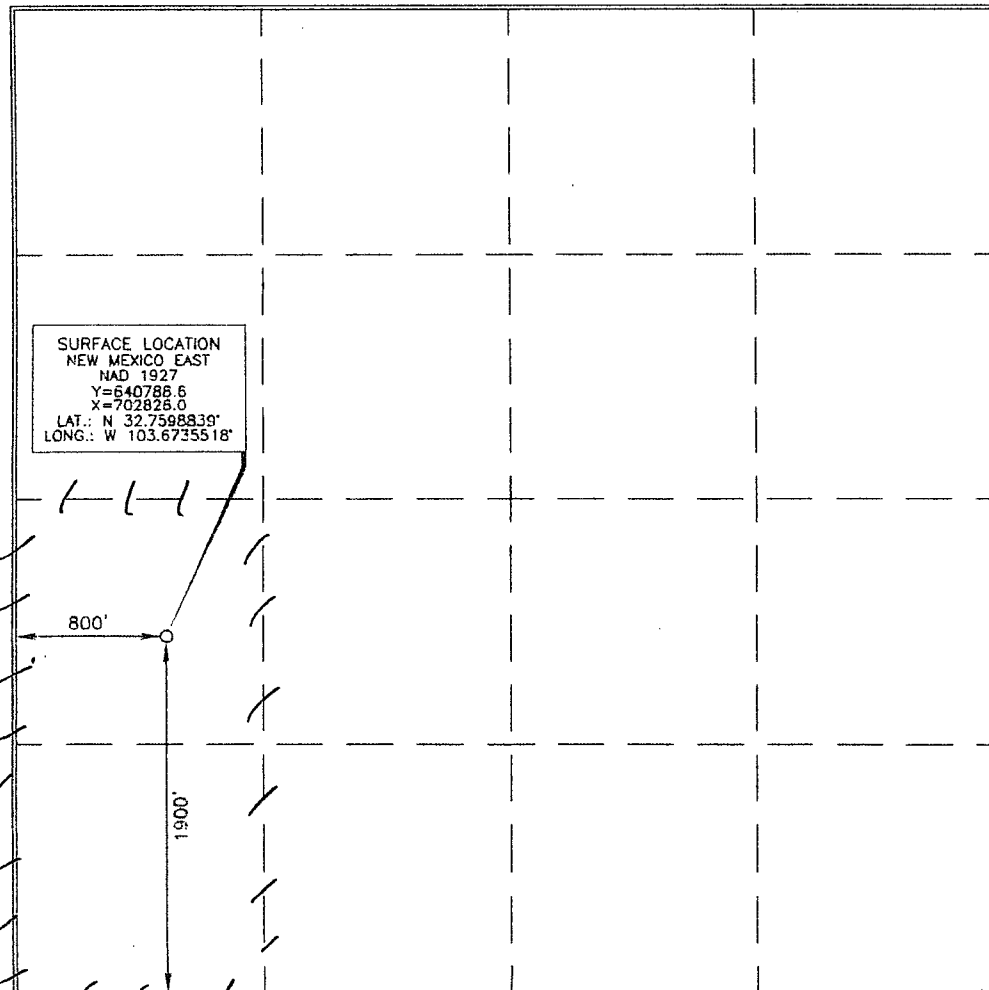
Surface Location

UL or lot no.	Section	Township	Range	Lot Idn	Feet from the	North/South line	Feet from the	East/West line	County
L	9	18 SOUTH	33 EAST, N.M.P.M.		1900'	SOUTH	800'	WEST	LEA

Bottom Hole Location If Different From Surface

UL or lot no.	Section	Township	Range	Lot Idn	Feet from the	North/South line	Feet from the	East/West line	County
Dedicated Acres 80.47		Joint or Infill	Consolidation Code	Order No.					

No allowable will be assigned to this completion until all interests have been consolidated or a non-standard unit has been approved by the division.



OPERATOR CERTIFICATION

I hereby certify that the information contained herein is true and complete to the best of my knowledge and belief, and that this organization either owns a working interest or unleased mineral interest in the land including the proposed bottom hole location or has a right to drill this well at this location pursuant to a contract with an owner of such a mineral or working interest, or to a voluntary pooling agreement or a compulsory pooling order

hereby entered by the division.

Signature: **Jennifer Duarte** Date: **4/18/13**
Printed Name: **Jennifer Duarte**
E-mail Address: **jenniferauarte@oxy.com**

SURVEYOR CERTIFICATION

I hereby certify that the well location shown on this plat was plotted from field notes of actual surveys made by me or under my supervision, and that the same is true and correct to the best of my belief.

Date of Survey: **DECEMBER 18, 2012**

Signature and Seal of Professional Surveyor: **Jerry J. Asch** 15079

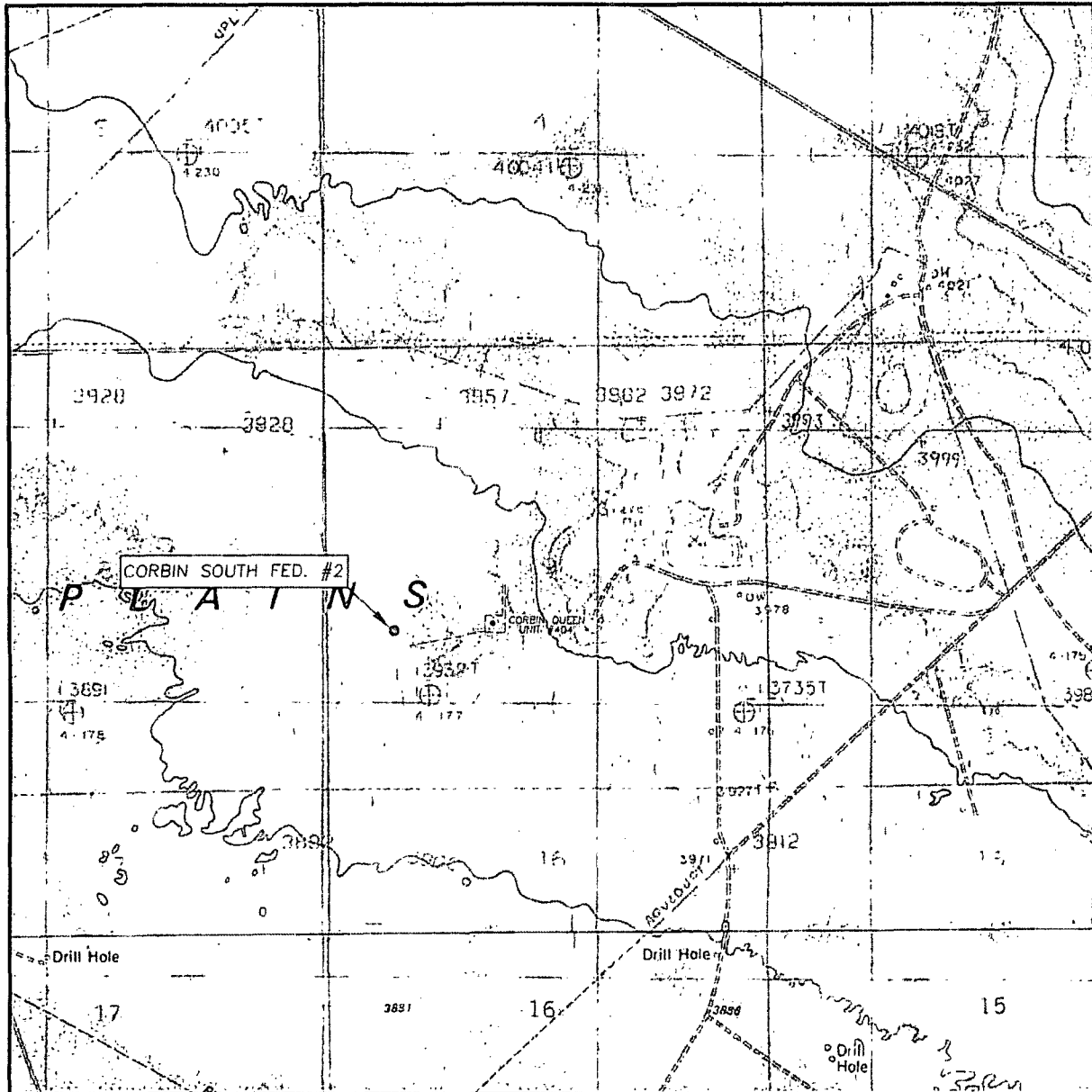
Certificate Number: **15079**

WO# 121218WL-a (KA)

ELG 9-25-2013

SEP 26 2013

LOCATION VERIFICATION MAP



SCALE: 1" = 2000'

CONTOUR INTERVAL: 10'

SEC. 9 TWP. 18-S RGE. 33-E

SURVEY N.M.P.M.

COUNTY LEA

DESCRIPTION 1900' FSL & 800' FWL

ELEVATION 3926.9'

OPERATOR OXY USA INC.

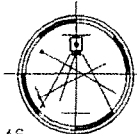
LEASE CORBIN SOUTH FED. #2

U.S.G.S. TOPOGRAPHIC MAP

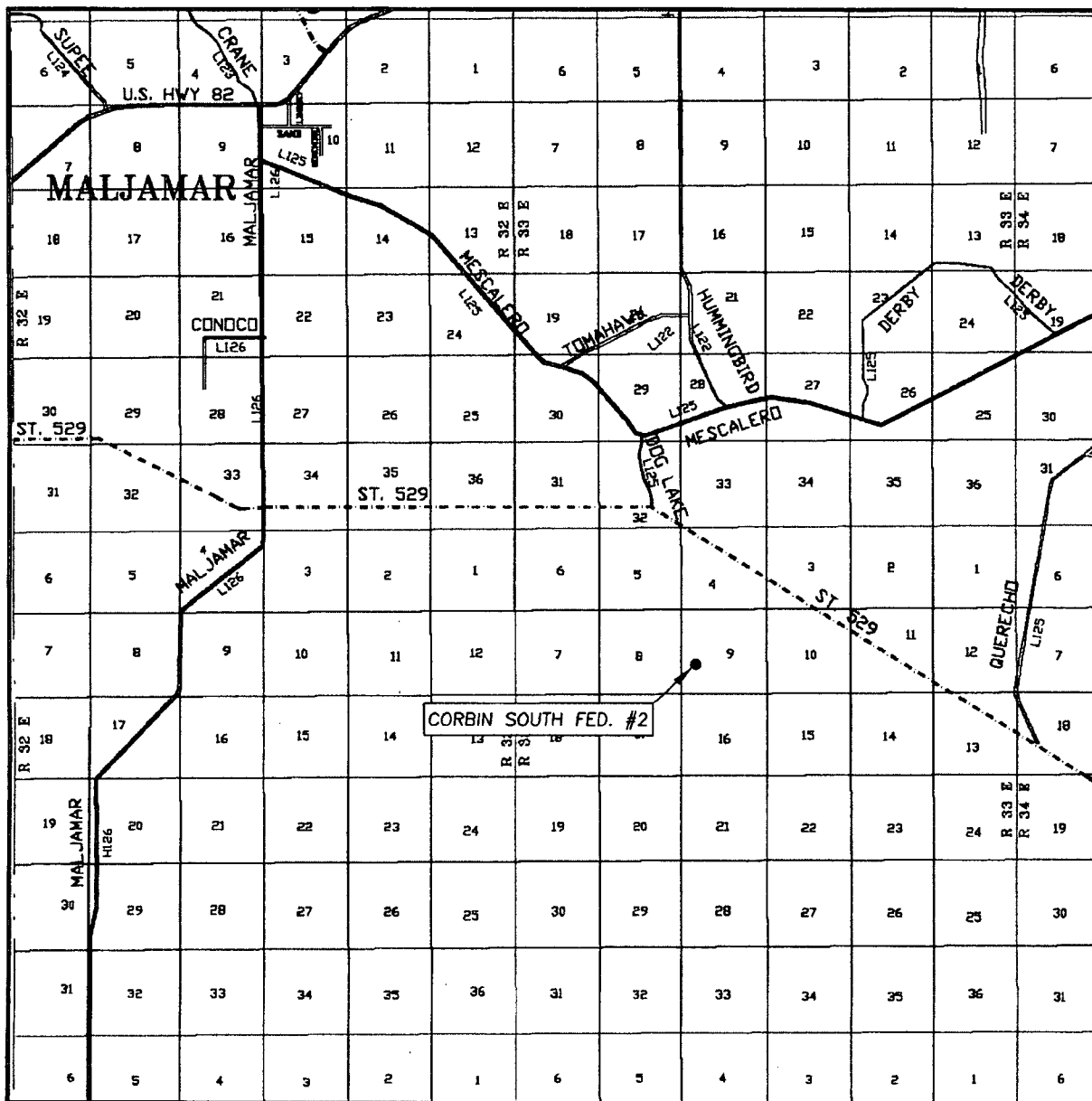
DOG LAKE, N.M.

Asel Surveying

P.O. BOX 393 - 310 W. TAYLOR
HOBBS, NEW MEXICO - 575-393-9146



VICINITY MAP

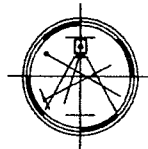


SEC. 9 TWP. 18-S RGE. 33-E
 SURVEY N.M.P.M.
 COUNTY LEA
 DESCRIPTION 1900' FSL & 800' FWL
 ELEVATION 3926.9'
 OPERATOR OXY USA INC.
 LEASE CORBIN SOUTH FED. #2

SCALE: 1" = 2 MILES

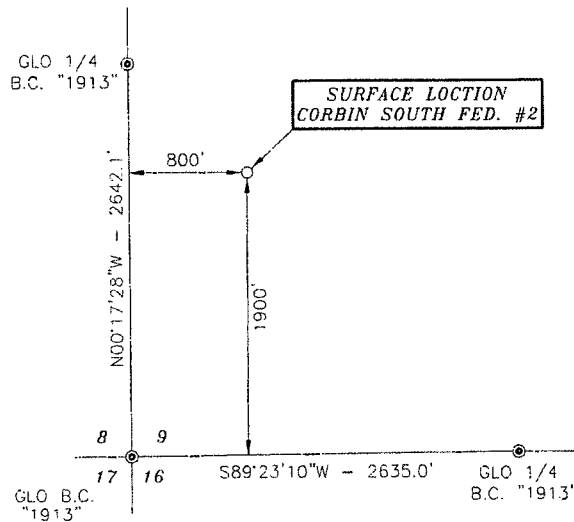
Asel Surveying

P.O. BOX 393 - 310 W. TAYLOR
 HOBBS, NEW MEXICO - 575-393-9146

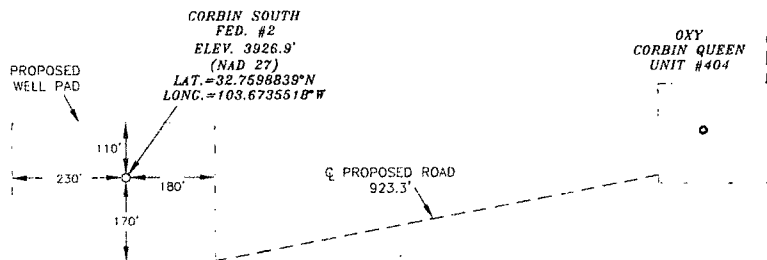


DIRECTIONS BEGINNING AT THE INTERSECTION OF HWY. #529 AND COUNTY ROAD #125 (DOG LAKE ROAD), GO SOUTHWEST ON CALICHE ROAD FOR 0.9 MILES, TURN LEFT AND GO SOUTHEAST FOR 0.8 MILES, TURN RIGHT AND GO SOUTH FOR 0.4 MILES, TURN LEFT AND GO EAST FOR 0.3 MILES, GO SOUTH FOR 0.1 MILES, GO EAST FOR 0.5 MILES, TURN RIGHT AND GO SOUTH FOR 0.4 MILES, TURN RIGHT ON PROPOSED ROAD AND GO WEST FOR 923.3 FEET TO LOCATION.

SECTION 9, TOWNSHIP 18 SOUTH, RANGE 33 EAST, N.M.P.M.,
LEA COUNTY NEW MEXICO



North
Basis of Bearings - GPS Geodetic Measurements
NM East Zone (83) North American Datum of 1983



SCALE=1"=300'

DRIVING DIRECTIONS:
BEGINNING AT THE INTERSECTION OF HWY.
#529 AND COUNTY ROAD #125 (DOG LAKE
ROAD), GO SOUTHWEST ON CALICHE ROAD
FOR 0.9 MILES, TURN LEFT AND GO
SOUTHEAST FOR 0.8 MILES, TURN RIGHT
AND GO SOUTH FOR 0.4 MILES, TURN LEFT
AND GO EAST FOR 0.3 MILES, GO SOUTH
FOR 0.1 MILES, GO EAST FOR 0.5 MILES,
TURN RIGHT AND GO SOUTH FOR 0.4
MILES, TURN RIGHT ON PROPOSED ROAD
AND GO WEST FOR 923.3 FEET TO
LOCATION.



LEGEND

⊙ - DENOTES FOUND MONUMENT AS NOTED

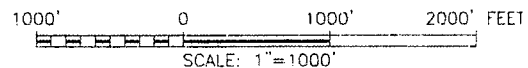
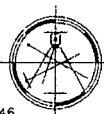
SURVEYORS CERTIFICATE

I, TERRY J. ASEL, NEW MEXICO PROFESSIONAL SURVEYOR
NO. 15079, DO HEREBY CERTIFY THAT I CONDUCTED AND AM
RESPONSIBLE FOR THIS SURVEY, THAT THIS SURVEY IS
TRUE AND CORRECT TO THE BEST OF MY KNOWLEDGE AND
BELIEF, AND MEETS THE "MINIMUM STANDARDS FOR
SURVEYING IN NEW MEXICO" AS ADOPTED BY THE NEW
MEXICO STATE BOARD OF REGISTRATION FOR
PROFESSIONAL ENGINEERS AND SURVEYORS.

Terry J. Asel 1/8/2013
Terry J. Asel, N.M. R.P.L.S. No. 15079

Asel Surveying

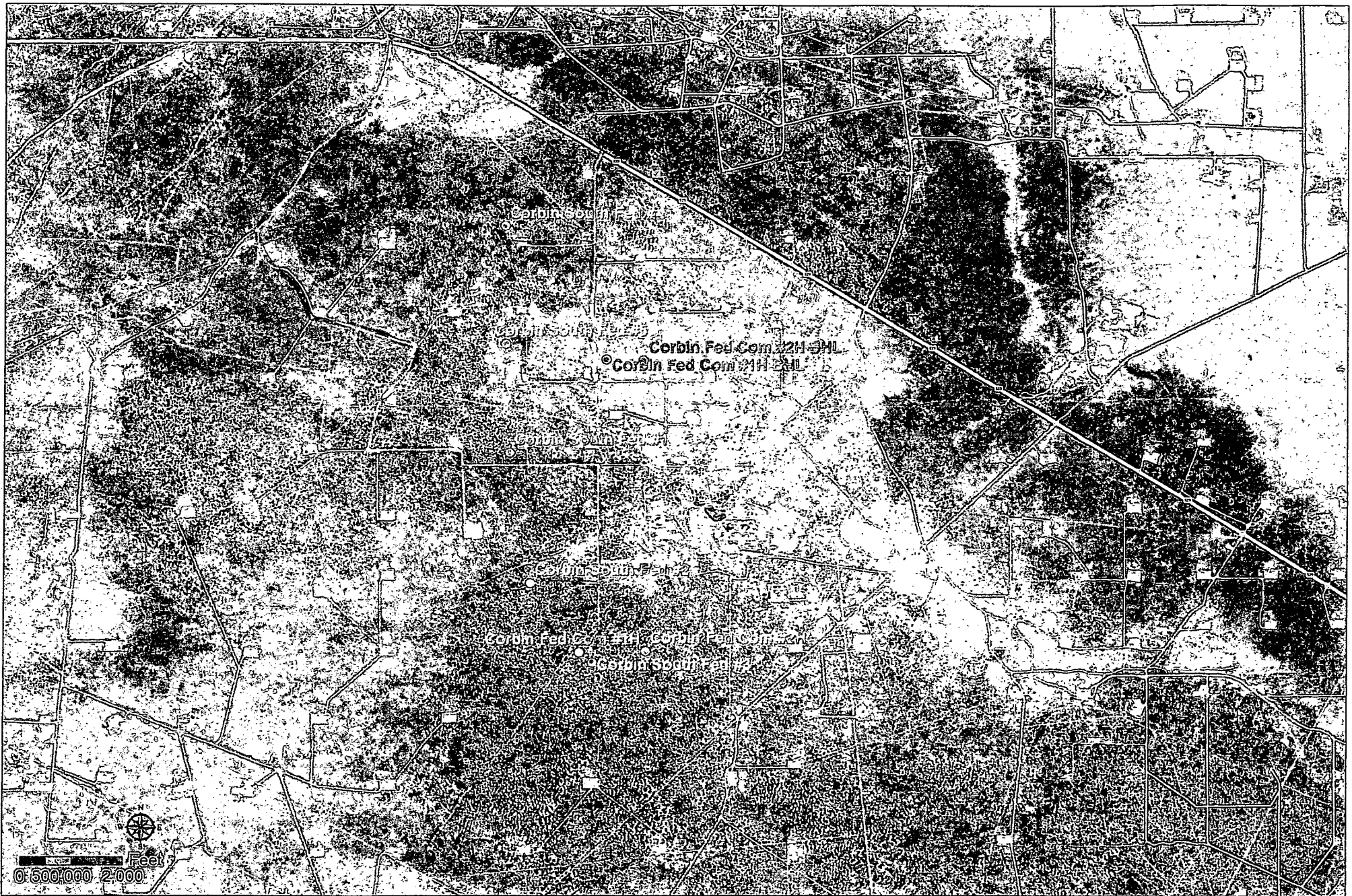
P.O. BOX 393 - 310 W. TAYLOR
HOBBS, NEW MEXICO - 575-393-9146



OXY USA INC.

CORBIN SOUTH FED. #2 LOCATED AT
1900' FSL & 800' FWL IN SECTION 9,
TOWNSHIP 18 SOUTH, RANGE 33 EAST,
N.M.P.M., LEA COUNTY, NEW MEXICO

Survey Date: 12/18/12	Sheet 1 of 1 Sheets
W.O. Number: 121218WL-a	Drawn By: KA Rev:
Date: 01/07/13	121218WL-a Scale: 1"=1000'



Permian Primary

New Mexico
Eddy & Lea Counties
Oxy Wells
Public Access Points

DL - 03/26/2013

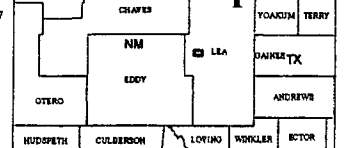
- OXY WELL Bottom Hole
- OXY WELL

PAP Map

Coordinate System Information

Geographic Coordinate System North American 1927
Datum: North American 1927
NAD 1927 State Plane New Mexico East FIPS 3001
Projection: Transverse Mercator
False Easting: 500000.000000
False Northing: 0.000000
Central Meridian: -104.333333
Scale Factor: 0.999909
Latitude Of Origin: 31.000000
Linear Unit: Foot US

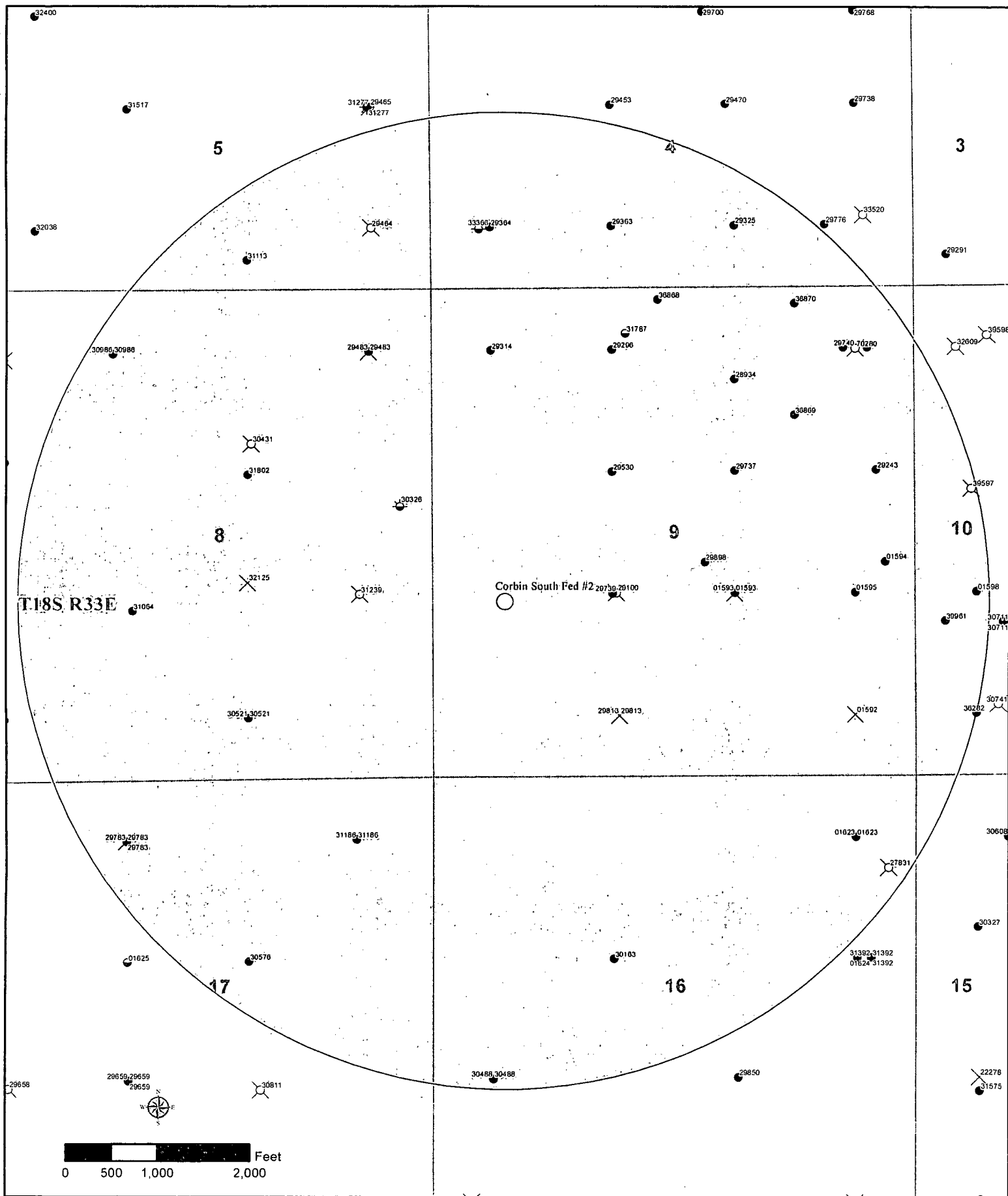
Location Map



Corbin South Fed #1

Approximately 5230' of 4" SDR 7
polyethylene production flowline (oil,
gas, and water) to be laid on surface
to the Corbin South Fed #1.
Operating Pressure <125 psig.

Corbin South Fed #2



Permian Primary

New Mexico
Eddy & Lea Counties
Oxy Wells with
1 Mile Radius

OK - 02/25/13

○ OXY WELL	☼ GAS SHOWS	✕ SUS	○ OTHER
● IHS Well	● OIL SHOWS	✕ ABANDONED LOC	○ 1 MILE RADIUS
☼ GAS	☼ O&G SHOWS	✕ ABANDONED-NO SHOWS	
● OIL	○ LOC	✕ INJ-NO SHOWS	
☼ O&G			

Coordinate System Information

Geographic Coordinate System North American 1927
Datum: North American 1927
NAD 1927 State Plane New Mexico East FIPS 3101
Projection: Transverse Mercator
False Easting: 500000.000000
False Northing: 0.000000
Central Meridian: -104.333333
Scale Factor: 0.999999
Latitude Of Origin: 31.000000
Linear Unit: Feet US

Location Map